

PROPOSAL FOR A SMALL DIGITAL COMPUTER
FOR USE IN MAGNETIC FIELD MEASUREMENTS

Hsi Feng and E. Malamud

March 26, 1968

I. Introduction

It is proposed that the National Accelerator Laboratory obtain (purchase or rent with purchase option) a small digital computer for use in magnetic field measurements. This note describes the data handling methods to be used in the field measurements, the data handling system of which the computer is the central part, and gives specifications for the computer and the various peripheral devices.

What we are proposing to build is a compact, portable, highly flexible and easy to use instrument that can be used initially on modeling work and prototype testing for the main ring and booster magnets. It can then be set up and programmed to rapidly perform a series of standardized tests on magnets during accelerator construction. Data obtained can be used directly in the shuffling program. In the more distant future it will find application in mapping beam transport and experimental magnets.

The general principles followed in designing and specifying the system are (1) use software whenever possible since computer speed is not a limitation (2) make the system portable so it can be brought easily to the vicinity of the magnet being measured and (3) make the system self contained so for most use recourse to an additional larger computer is unnecessary.

In planning our magnetic field measuring system we have followed some of the ideas used at Lawrence Radiation Laboratory⁽¹⁾ and Argonne National Laboratory⁽²⁾.

The system described, exclusive of the mechanical devices for accurate probe positioning would cost \$30-50K or \$1000-1500/month rental. A very preliminary breakdown is shown in Table I.

II. Data Handling Methods

The process of going from a series of probe measurements to a graph in a notebook should be as direct and rapid as possible consistent with the required accuracy. In our system we divide the process into two stages: data collection and data reduction. Each stage is made as flexible as possible and has provisions for future expansion. Both stages are handled by the same computer. Fig. 1 is a block diagram of the proposed system.

A. Data Collection The efficient way to collect data on pulsed magnets is to keep the probe position fixed while gathering data on a series of excitations and then move the probe to a new position or orientation. In a DC powered magnet it will be simpler to move the probe while maintaining constant current, but the mode of operation to be described does not exclude this possibility. The movable probe might initially consist of 1 - 2 integrating coils or Hall plates⁽³⁾ but provision will be made to expand to 10 sensors. An additional signal derived from magnet current (shunt) or B (loop around the back leg) will be used to

decide when to take data.

To start with we will have a long coil for $\int Bdl$ measurements and end plate design of the B2 magnet, and two point measurement coils to study variations in field in the interior of the B2 magnet for various crenollation patterns and various types of steel. The long coil will have 10 turns and measure 40 cm. by 1 cm. giving a maximum 10 volt signal in the interior of the magnet, and the point measurement coil will have 200 turns and ^{bc}0.5 cm. in diameter.⁽⁴⁾

After these initial simple coils, Laslett type coils⁽⁵⁾ will be built and pairs of them can be hooked up so the difference is integrated directly to measure gradients or small variations from a central value.

Current and field values will be sampled simultaneously into separate Hold circuits. A multiplexor would then switch each S-H to an analog to digital converter. 14 bits + sign would give a least count of $1/1.6 \times 10^4$ which we believe is adequate. This fixes the convenient word length of the computer at ≥ 16 bits.

Integrator drift can be measured by the system between pulses and the computer will make the necessary corrections and also apply any other calibration factors needed. If Hall probes are used it may be possible to use a simple uncompensated probe and monitor the Hall voltage and temperature simultaneously and then do the calibration in the computer.

In making a field map it is essential that the same current values be measured at each probe position. The following method will insure this. At the beginning of a run a few current values where field plots are needed are fed in on the computer typewriter or other I/O device. The system will sample current and field values at time intervals set by the total system: S-H, multiplex, A to D, and compute time. For sake of discussion let's assume that a set of data comes in every 500 μ sec. Only the present and previous sets are stored. When the current value passes one of the initially preset values of current the present and previous set of data are saved for later linear interpolation. An example of a program to do this is shown in Fig. 2. The error from linear interpolation using magnet current can be kept smaller than 1 gauss if the system speed is 22.5 msec⁽⁶⁾. (There would be even less error if the back leg, B₀, monitoring is used.)

Thus it can be seen that computer speed is not a critical factor. The A to D, however, cannot be too slow because of drift in the sample and hold circuits. If we assume an expanded system of 10 S-H's, then the 10th S-H circuit must drift less than $1/1.6 \times 10^4$ in the time it takes to multiplex and A to D 10 times. This criterion is sufficient to specify a S-H and A to D system.

Digital stepping motors will move the probe between magnet pulses according to a program initially fed in on the computer typewriter.

Much more relevant for exp. magnets than for synchrotron magnets.

B. Data Storage

Data storage will take place between magnet pulses. Future expansion might have as many as 10 sensors sampled at 10 different times during the pulse. Thus 200 16 bit words every 5 seconds must be written on the tape. To allow for the potentially higher data rate in measuring booster magnets and identification words and calibration data we assume 1500 bits/sec. If the information is written on standard 7 track 200 bpi tape, the tape transport must move tape at about 1-1/2"/second which is quite slow.

A scan system slows work but it is fast enough.

Although the tape speed requirement is minimal we want to write standard 7 or 9 track tapes. The system is designed so that recourse to a large computer will normally not be needed; however, occasions may arise when a more sophisticated treatment of the data is desirable, e. g. data smoothing using high order polynomial fitting. Tapes compatible with a large computer will facilitate such work.

Using a magnetic tape system and the two phase operation described reduces the computer memory requirement. It is true there are alternate and cheaper ways to realize this end. However, the magnetic tape is a key feature in the measurement philosophy. By having a tape, a library of data can be built up and referred to at any later date. It is quite likely that several weeks after a field map was taken one might want to display it in a new way or extract a new graph from it. This will be a trivial matter given the library and the software package in the data reduction phase.

C. Data Reduction

The computer will search the tape for required data, do necessary interpolations, and calibrations, and produce graphs with an on-line X-Y plotter. (Lists of numbers can also be produced using the teletype.) For this operation to be effective we will need to develop an easy to use software package through which the operator of the system can specify his desires on the typewriter and/or through sense switches.

A partial list of options might be

1. Excitation curve
2. Field plot vs. x,y, or z.
3. { Bdl vs. position
4. Field gradient, or field index vs. position
5. Deviations of field from value at some fixed position
6. Harmonic content of field
7. Contour plot
8. Specification of scale including displaced zero
in any of the graphs.

Clearly more than one program will be needed to handle all these possibilities. Each program or group of programs would be on a reel of paper tape (or DECTape if a DEC computer is chosen) to be loaded in by the operator. In a future expansion of the computer including adding memory, it might be possible to link these programs together into a single data reduction program.

The data reduction phase places much more severe demands on the computational ability than the data collection phase. We feel a 4096 word computer is a minimal but adequate size with which to operate. Data collection can be done with a very slow machine but for efficient data reduction we should have a basic cycle time of $\leq 2 \mu\text{sec}$ and hardware multiply/divide.

Table II summarizes the features of some proposed systems obtained in informal discussions with representatives of computer companies. Much more detailed and complete data will be compiled from the written replies to the request for quotation described in IV.

III. Secondary Uses

The primary use and main justification of the computer and its accompanying peripheral equipment have been described above.

A permeameter can easily be attached to the computer to automatize iron sample evaluations.

The multiplexor and A to D system can easily monitor slowly varying analog signals such as can be derived from magnet temperature and water flow in the magnet under test. Such application could lead to preliminary studies on data logging for the main ring control system. Since the system will initially be in the inflatable building where there will also be a model vacuum system ion pump currents can be monitored, and displayed.

Since the computer will have a Fortran compiler it probably will find some limited use for ordinary computations.

IV. Specifications and Request for Quotation.

The National Accelerator Laboratory asks computer manufacturers to make proposals of computer systems which they will have available by the summer of this year and which they consider could meet in whole or in part, the computing needs described. It should be clearly understood that this request is not to be taken as binding upon the Laboratory to order any computer proposed, or upon the manufacturers to supply such systems as may be described at the prices or within the delivery delays quoted. The purpose of this request is solely to allow the Laboratory to make contact with the manufacturers of suitable equipment and to be informed of the available systems.

The National Accelerator Laboratory is a non-profit research organization administered by the Universities Research Association, a group of major U. S. universities. We expect manufacturers to allow appropriate discounts in their quotation.

In this section we repeat many of the points made above but organize them in a manner suitable for quotation.

The manufacturer is requested to make his information available on a comparable basis with respect to the items listed below.

MINIMUM REQUIREMENTS

1. CENTRAL COMPUTER The computer shall be a stored program, general purpose digital computer of modern design, constructed entirely with solid-state electronics, mainly of silicon monolithic, integrated logic circuits.

- 2. MINIMUM HARDWARE REQUIREMENTS A directly addressable fast memory of 4096 words of ≈ 16 bit length, $\leq 2 \mu\text{sec}$ storage cycle time, 1 interrupt, 1 index register, hardware multiply and divide circuitry.

The computer should be equipped with a minimal input output device such as an ASR-33 teletype.

The central computer system must operate fully and properly at a performance level of 90% or more during a minimum period of 50 hours used as a basis for computation of the performance level.

- 3. DATA COLLECTION INTERFACE This consists of 32 digital inputs, 32 digital outputs (16 pulse and 16 register outputs) and one 16-channel A/D conversion system. Digital input/output levels and the time duration of the 16 pulse outputs can be anything compatible with the computer. The A/D system, included 4 S/H amplifier; 16-channel multiplexor and 14-binary bit + sign A to D converter, should be expandable to 10 S/H amplifier and 128-channel multiplexor. Differential ended analog input system is required. This A/D system must be maintained an overall accuracy to a 14-bit resolution after the expansion, e. g. sample and hold ^{10 channels} simultaneously and digitize them in sequence.

- 4. DATA STORAGE 1 magnetic tape unit, including interface to computer, capable of writing and reading 200 bpi standard 7 or 9 IBM compatible tapes at tape speed ≥ 10 inches/sec (556 or 800 bpi density is acceptable with a corresponding decrease in speed required). Rewind speed should be at least as fast as forward speed and a backspace record instruction available. The tape

system shall be capable of operating with less than 1 error in 6×10^7 bits read or written during at least one hour of operation to establish this performance level. This speed requirement will not be a limitation with most available tape units.

5. DATA REDUCTION INTERFACE X-Y plotter with remote pen up-down control capability and with pen speed of at least 3 inch/sec to handle standard K-E 8-1/2 x 11" graph paper including interface to the computer.

ENVIRONMENTAL AND PHYSICAL REQUIREMENTS

1. POWER LINE The system shall operate on 120 V, 1 ϕ AC or 220 V, 3 ϕ AC. The system shall be capable of operating satisfactorily given fluctuations in line voltage of $\pm 10\%$ and frequency of 60 ± 1 cycles. In addition the system shall operate given the distortion of the normal power line sine wave by the magnet pulsed power supply which will be operating simultaneously with the data collection. A sketch of the wave form is shown in Fig. 3. If the computer manufacturer anticipates difficulties from this line voltage distortion he should include remedial measures such as a voltage regulating transformer or small motor-generator set in his proposal.
2. ENVIRONMENT The system will be used initially in an inflatable air building in the village of Weston. It is expected that the temperature in this building might range

from 50° F. to 100° F. and relative humidity 10-95%.

The system must operate satisfactorily over this range.

If the manufacturer anticipates difficulties with these requirements we suggest he include in his proposal remedial measures such as mounting a small air conditioning unit in one of the relay racks.

3. SENSITIVITY TO MAGNETIC FIELDS The magnets under test will produce stray magnetic fields which could cause difficulties if the computer is too close to the magnet. We request the manufacturer to state what is the tolerable magnetic field and if as option he can supply factory installed magnetic shielding around the core memory.
4. PHYSICAL SIZE AND WEIGHT We would like the complete system described above including data collection interface, magnetic tape drive, on-line plotter, and I/O teletype and any special features needed such as power isolation equipment and air conditioning to fit in 2-3 relay racks. These should be bolted together and surrounded by a heavy protective frame with casters and a crane hook. The teletype and plotter can be mounted on a desk type protrusion. The whole system should pass through a 34" by 76" door and a single person should be capable of pushing it around on a concrete floor. (In moving it through a door the desk can be folded up and the plotter and teletype carried separately.)

MINIMUM SOFTWARE REQUIREMENTS

The following software would be expected to be delivered with the system.

1. An assembly program for symbolic machine language.
2. A Fortran compiler

3. Diagnostic Programs

FURTHER DESIRABLE HARDWARE FEATURES

1. Boolean hardware instructions
2. Real time clock
3. Sense switches
4. Provision for a cathode ray oscilloscope display
5. Transverse parity checking in tape reading and writing.

FURTHER DESIRABLE SOFTWARE FEATURES

1. Programs to operate the X-Y plotter and the magnetic tape system.
2. A system for debugging assembly or Fortran programs.
3. Double precision arithmetic subroutines.

FUTURE EXPANSION

In order to provide for future expansion we are interested in learning if the following additions and changes are possible and if they can be done in the field.

1. Expansion of memory to 8K or 16K.
2. Addition of more S-H circuits up to a maximum of 10.

3. Change teletype for Selectric typewriter and photo-electric paper tape reader.
4. Addition of low cost, completely redundant tape system (like DECTape) to replace paper tape.
5. Change teletype for line printer and card reader/punch.

QUOTATION

On each of the items described we would like to know separately prices for purchase, rental with purchase option, yearly cost of maintenance contract, delivery time, transportation and installation charges.

We would like the quotation to list separately the computer itself, the input/output teletype, the sample and hold circuits, the multiplexor, the A to D converter, the magnetic tape transport, the X-Y plotter, the interfaces for the above peripheral equipment, and any special additions such as mentioned under environmental requirements.

ADDITIONAL QUESTIONS

1. On each item quoted we also would like to know if the manufacturer produces the item himself or if it is obtained from another company.
2. Is 1 or 2's complement arithmetic used?
3. Are the same circuit boards used in any proposed interfaces as are used in the computer itself?
4. What training courses will be provided for programming and maintenance?

5. What program testing facilities on a similar computer will be available to the Laboratory before installation of a computer at the Laboratory?
6. What will be the conditions of a proposed maintenance contract (number of hours per day on call service, distance to nearest field office)?
7. What logic levels are used in the computer and the interfaces?
8. What are the details specifications of the data collection interface? Please specify them separately.

REFERENCES

1. P. G. Watson and R. F. DiGregorio, Lawrence Radiation Laboratory, Techniques of Magnetic Field Measurement, Proceedings of the International Symposium on Magnet Technology 1965, p. 393, Stanford Linear Accelerator Center, Stanford University.
2. E. C. Berrill and R. S. Odwazny, Argonne National Laboratory, The Use of a High Speed Data Acquisition System in Measuring Large Volume Magnets at the Zero Gradient Synchrotron, Proceedings of the International Symposium on Magnet Technology 1967, p. 675, Stanford Linear Accelerator Center, Stanford University.
3. J. R. Mulady, William M. Brobeck & Associates, Berkeley, California, Precision Magnetic Field Measurements with Hall-Effect Probes, Proceedings of the International Symposium on Magnet Technology 1965, p. 447, Stanford Linear Accelerator Center, Stanford University. This system uses a temperature compensated probe. We propose to replace the hardware circuit with software correction in the computer.
4. We assume $B_{\max.} = 20,000$ gauss and
 - a) Long coil
RC (Time constant) = 3 msec.
area in the max. B = 15 cm^2
 - b) Point measuring coils
RC = 1 msec.
5. L. J. Laslett, Some Aspects of Search Coil Design, Brookhaven National Laboratory, Associated Universities Inc. June 1954.
6. Assumptions made are

$$\left. \frac{dB}{dI} \right]_{I=0} = 2 \left. \frac{dB}{dI} \right]_{I=I_0}$$

$$\frac{dB}{dt} = \frac{22500}{1500} = 15 \text{ gauss/ms.} = \text{constant}$$

where I, current

B, magnetic field

t, time

$I_0 = 8000 \text{ A}$

$B_0 = 22500 \text{ gauss}$

If we take the case of B going from the ramp to the flat top then $t_{\min.} = 267 \mu\text{sec.}$ However if measurements are needed in this special case, it can be taken care of either by programming or special circuitry.

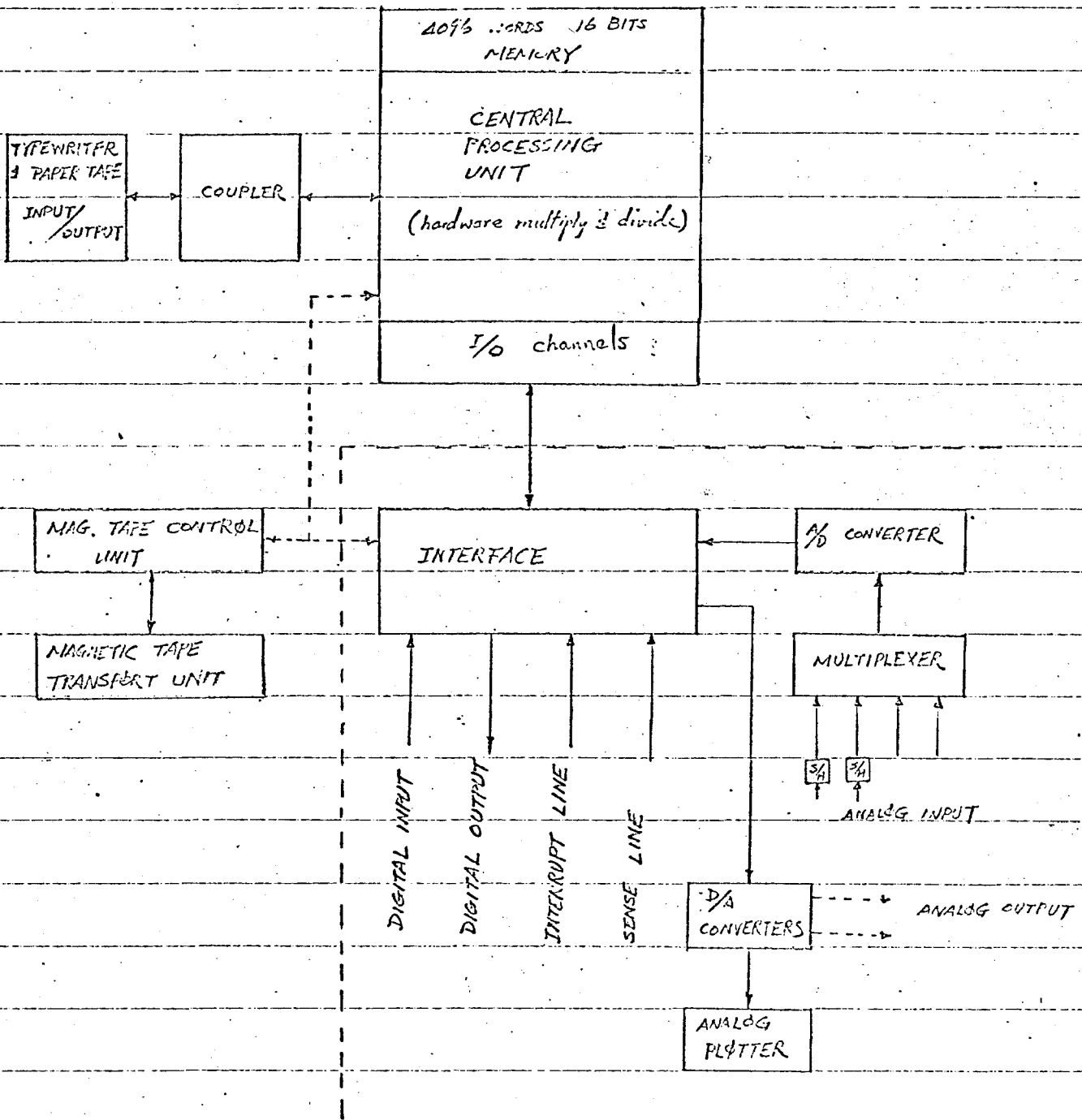
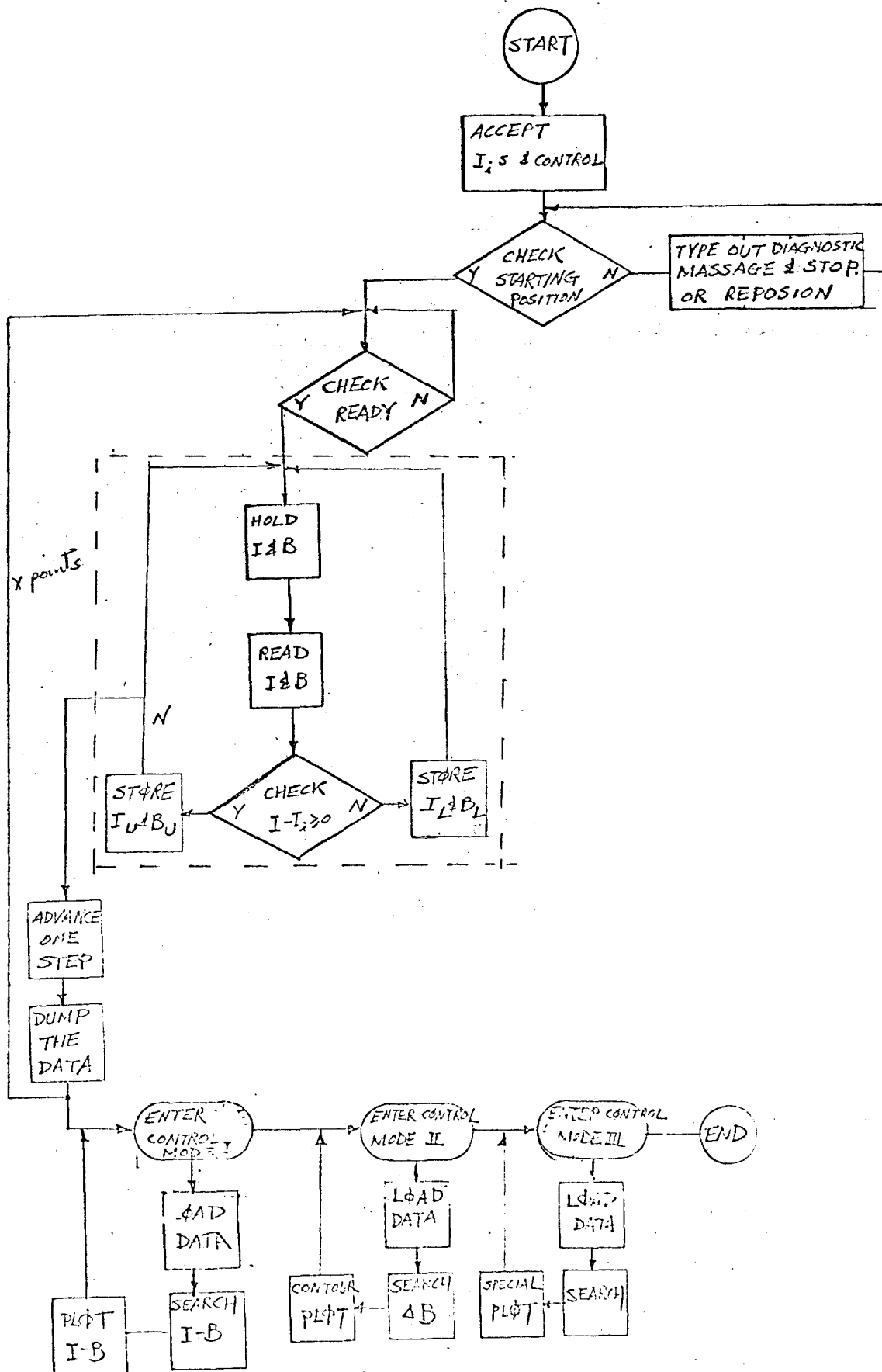


FIG. 1

BLOCK DIAGRAM OF THE MAGNETIC FIELD MEASURING SYSTEM

FIG. 2. EXAMPLE OF THE SOFTWARE BLOCK DIAGRAM



portion of the block diagram.

Assumptions are as following:

- 1) The total number of currents N is stored in "NCUR"
- 2) Desired currents are stored in "CON", ----, "CON + N".
- 3) The shunt calibration has already been done separately.
- 4) The results are stored in location blocks

| | | |
|----------|----------|-----------------------|
| "UI",--- | "UI + N" | I + ΔI values |
| "LI",--- | "LI + N" | I - ΔI values |
| "UB",--- | "UB + N" | B + ΔB values |
| "LB",--- | "LB + N" | B - ΔB values |

| | | | | |
|----------------|------------|----------------|-----------------------|---|
| | LAA | NCUR | | 2 |
| | NEG | | | 1 |
| | TAB | | Set Index to NCUR | 1 |
| L $\Phi\Phi$ P | IBS | | | 1 |
| | BRU | SUB | | 1 |
| | L Φ B | Φ UT | Φ UT | 2 |
| SUB | CEU | 18, W | | 3 |
| | DATA | '2001 | S/H Circuit Triggered | 3 |
| | CEU | 18, W | | |
| | DATA | '2002 | Selected I Channel | 3 |
| | CEU | 18, W | | 3 |
| | DATA | '2003 | Start A/D Converter | 3 |
| | AIP; | 19, W | Current into A Reg. | |
| | CEU | 18, W | | 3 |
| | DATA | '2004 | Selected B Channel | 3 |
| | CEU | 18, W | | |
| | DATA | '2003 | Start A/D Converter | 3 |
| | MIP | 18, W | | |
| | DAC | TEMP | B into Temp | 3 |
| | CMA | C Φ N, 1 | Search for Proper I | |
| | N Φ P | | | 1 |
| | BRU | L Φ C | Lower Limit | 1 |
| | STA | UI, 1 | Upper Limit | 2 |
| | LAA | TEMP | | 2 |
| | STA | UB, 1 | | 2 |
| L Φ C | BRU | L $\Phi\Phi$ P | Return | 1 |
| | STA | LI, 1 | | 2 |
| | LAA | TEMP | | 2 |
| | STA | LB, 1 | | 2 |
| | BRU | SUB | | 1 |

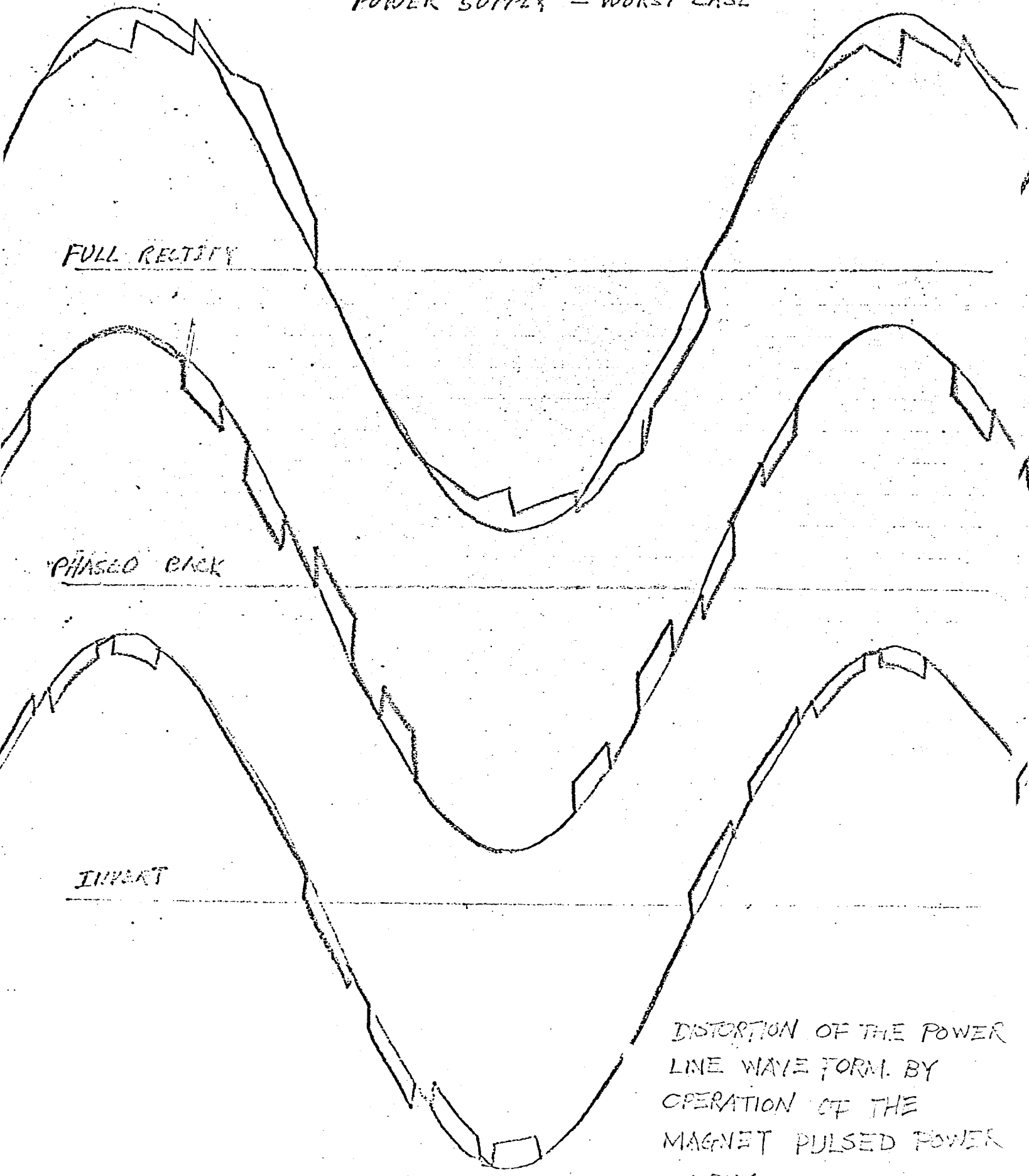
Total 33 cycles

or $66 \mu s + 2$ A/D conversion time per short loop

CHKD. BY _____ DATE _____
R. CASSEL

FROM 1.5 MV TRANSFORMER
TO PULSED MODEL MAGNET
POWER SUPPLY - WORST CASE

JOB NO. FN-122
0062



DISTORTION OF THE POWER
LINE WAVE FORM. BY
OPERATION OF THE
MAGNET PULSED POWER
SUPPLY

FIG. 3

TABLE I; APPROXIMATE COST OF THE SYSTEM

| | |
|------------------------------|------------|
| Computer | \$ 16,000. |
| Teletype with paper tape I/O | 2,000. |
| Magnetic tape unit | 10,000. |
| A/D System - Include: | |
| 16 Channel Multilexer & | |
| 4 S/H Amplifier | 8,000. |
| Analog Plotter | 2,000. |
| Digital inputs and outputs | 2,000. |
| | <hr/> |
| TOTAL | \$ 40,000. |

TABLE II: PRELIMINARY TABULATION OF FEATURES OF COMPUTERS BEING CONSIDERED FOR MAGNETIC FIELD MEASUREMENTS.

| MODELS | SEL 810A | Varian Data 620I | HP 2116A |
|--|-----------------------------------|----------------------------------|-----------------------------|
| Word Size (bits) | 16 | 16 | 16 |
| Direct Addressable Memory Size (words) | | | |
| a. Basic Size | 4096 | 4096 | 4096 |
| b. Maximum Size | 32768 | 32768 | 32768 |
| Memory Parity | no | no | no |
| Memory Protect | no | no | last 64 locations |
| Storage Cycle Time (μ s) | 1.75 | 1.8 | 1.6 |
| Store Time (μ s) | 3.5 | 3.6 | 3.2 |
| Add Time (μ s) | 3.5 | 3.6 | 3.2 |
| *Multiply Time (μ s) | 7 | 18 | 19.2 |
| *Divide Time (μ s) | 10.5 | 18~25 | 21 |
| Number of Instructions in Hardware | 53 | 107 | 70 |
| Number of Accumulators | 1 | 1 | 2 |
| Number of Index Registers | 1 | 1 | 0 |
| Registers Displayed | 5 | 1 * 5 | 5 |
| Peripheral Device Included | ASR 33 | ASR 33 | ASR 33 |
| AC Power Supply | 115V \pm 10% 60 cps \pm 1% | 115V \pm 10% 60 \pm 2 cps | 115V \pm 10% 50~60 cps |
| Power Consumption (w) | 1200 | 340 | 1600 |
| Power Fail Safe & Interrupt | yes | no | no |
| Number of Interrupts | | | |
| a. Basic | 2 | 0 | 0 |
| b. Maximum | 256 | 64 | 55 |
| c. Programmable | yes | yes | yes |
| d. Minimum Service Time (μ s) | | 3.6 | 4.2 |
| Environment | | | |
| a. Temperature | 50~90°F | 0~45°C | 0~55°C |
| b. Humidity | 10~95% | 10~90% | 10~95% |
| Logic Level | 0, +3.5V | 0, +3.5V | 0, +3.5V |
| Physical Size (L" x W" x H") | 26 x 23 1/4 x 62 | 15 x 19 x 10 1/2 | 18 3/8 x 16 3/4 x 31 1/2 |
| Weight (lb.) | 300 | 70 | 230 |
| Cost | 18,000 | 16,400 | 25,000 |

| MODELS | HP 2115A | SDS Sigma 2 | DDP 516 |
|--|--|--------------------------------------|----------------------------------|
| Word Size (bits) | 16 | 16 | 16 |
| Direct Addressable Memory Size (words) | | | |
| a. Basic Size | 4096 | 4096 (8K) | 4096 |
| b. Maximum Size | 8192 | 65536 | 32768 |
| Memory Parity | no | no | yes |
| Memory Protect | no | no | yes |
| Storage Cycle Time (μ s) | 2.0 | 0.9 | 0.96 |
| Store Time (μ s) | 4.0 | 2.25 | 1.92 |
| Add Time (μ s) | 4.0 | 2.25 | 1.92 |
| *Multiply Time (μ s) | 24.0 | 10.35 | 5.28 |
| *Divide Time (μ s) | 26.0 | 10.80 | 10.56 |
| Number of Instructions in Hardware | 70 | 42 | 72 |
| Number of Accumulators | 2 | 2 | 2 |
| Number of Index Registers | 0 | 2 | 1 |
| Registers Displayed | 5 | 1 x 9 | 1 x 4 |
| Peripheral Device Included | ASR-33 | ASR 35 & PAPER TAPE I/O | ASR 33 |
| AC Power Supply | 115V \pm 10% 50~60 cps | 3 ϕ 208V \pm 10% 45~65 cps | 115V \pm 10% 60 \pm 2 cps |
| Power Consumption (w) | 1600 | 1300W | 1000W |
| Power Fail Safe & Interrupt | no | no | yes |
| Number of Interrupts | | | |
| a. Basic | 0 | 0 | 1 |
| b. Maximum | 40 | 144 | 48 |
| c. Programmable | yes | yes | yes |
| d. Minimum Service Time (μ s) | 5.2 | 4 | 2.88 |
| Environment | | | |
| a. Temperature | 10~40°C | 40~125°F | 0~45°C |
| b. Humidity | 10~95% | 10~90% | |
| Logic Level | | 0, +4V | 0, +6V |
| Physical Size (L" x W" x H") | 18 $\frac{3}{8}$ x 16 $\frac{3}{4}$ x 22 $\frac{3}{4}$ | 30 x 30 x 62 | 24 x 24 x 38 |
| Weight (lb.) | 165 | 500 | 250 |
| Cost | 16,500 | 42,000 | 28,500 |

| MODELS | DDP416 | CDC1700 | IBM1800 |
|--|---------|------------------------|--|
| Word Size (bits) | 16 | 16 | 16 |
| Direct Addressable Memory Size (words) | | | |
| a. Basic Size | 4096 | 4096 | 4096 |
| b. Maximum Size | 16384 | | |
| Memory Parity | | yes | yes |
| Memory Protect | | yes | yes |
| Storage Cycle Time (μs) | 0.96 | 1.1 | 2 |
| Store Time (μs) | 1.92 | 2.2 | 4.5 |
| Add Time (μs) | 1.92 | 2.2 | 4.5 |
| *Multiply Time (μs) | 292 (s) | 7 | 15.25 |
| *Divide Time (μs) | 336 (s) | 9 | 42.75 |
| Number of Instructions in Hardware | 40 | | |
| Number of Accumulators | 2 | 1 | 2+ extend |
| Number of Index Registers | 0 | 1 | 3 |
| Registers Displayed | | 1 x 5 | 4 1 x 5 1 x 10 |
| Peripheral Device Included | ASR 33 | KSR 35 with paper I/O | selective T/W paper I/O |
| AC Power Supply | | 3φ 208V ±10% 60 cps | 3φ 208 or 230 710V -8% 60 ± 1/2 cps |
| Power Consumption (w) | | 2000VA | 5200VA |
| Power Fail Safe & Interrupt | | yes | no |
| Number of Interrupts | | | |
| a. Basic | 1 | 2 | 12 |
| b. Maximum | 18 | | |
| c. Programmable | yes | | |
| d. Minimum Service Time (μs) | 2.88 | | |
| Environment | | | |
| a. Temperature | | 40~120°F | 40~120°F |
| b. Humidity | | | 10~95% |
| Logic Level | | | 0, +3V |
| Physical Size (L" x W" x H") | | 73 3/4 x 26 x 41 1/4 | 33 x 62 x 76.5 |
| Weight (lb.) | | 850 | 2000 |
| Cost | 16,900 | 35,300 | 75,600 |

| MODELS | IBM 1130 | EAI 640 | INTERDATA MODEL 4 |
|--|----------|---------|----------------------|
| Word Size (bits) | | 16 | 16 |
| Direct Addressable Memory Size (words) | | | |
| a. Basic Size | | 4096 | 4 K bytes |
| L. Maximum Size | | 32768 | 65K bytes |
| Memory Parity | | no | no |
| Memory Protect | | | |
| Storage Cycle Time (μ s) | | 1.65 | 1.5 |
| Store Time (μ s) | | 3.3 | 3.9 |
| Add Time (μ s) | | 3.3 | 3.9 |
| *Multiply Time (μ s) | | 18.15 | 25 |
| *Divide Time (μ s) | | 18.97 | 32 |
| Number of Instructions in Hardware | | 62 | 70 |
| Number of Accumulators | | | |
| Number of Index Registers | | | 15 |
| Registers Displayed | | | |
| Peripheral Device Included | | | ASR 33 |
| AC Power Supply | | | |
| Power Consumption (w) | | | 300 |
| Power Fail Safe & Interrupt | | | |
| Number of Interrupts | | | |
| a. Basic | | | 1 |
| b. Maximum | | | 256 |
| c. Programmable | | | yes |
| d. Minimum Service Time (μ s) | | | 12 |
| Environment | | | |
| a. Temperature | | | |
| b. Humidity | | | |
| Logic Level | | | |
| Physical Size (L" x W" x H") | | | |
| Weight (lb.) | | | |
| Cost | | | |

| MODELS | INTERDATA MODEL 3 | REDCOR 685 | |
|--|----------------------|------------|--|
| Word Size (bits) | 16 | | |
| Direct Addressable Memory Size (words) | | | |
| a. Basic Size | 4K bytes | | |
| b. Maximum Size | 65K bytes | | |
| Memory Parity | no | | |
| Memory Protect | | | |
| Storage Cycle Time (μs) | 1.8 | | |
| Store Time (μs) | 34 | | |
| Add Time (μs) | 34 | | |
| *Multiply Time (μs) | 150 | | |
| *Divide Time (μs) | 200 | | |
| Number of Instructions in Hardware | 70 | | |
| Number of Accumulators | | | |
| Number of Index Registers | 15 | | |
| Registers Displayed | | | |
| Peripheral Device Included | ASR 33 | | |
| AC Power Supply | | | |
| Power Consumption (w) | 300 | | |
| Power Fail Safe & Interrupt | | | |
| Number of Interrupts | | | |
| a. Basic | 1 | | |
| b. Maximum | 256 | | |
| c. Programmable | yes | | |
| d. Minimum Service Time (μs) | 120 | | |
| Environment | | | |
| a. Temperature | | | |
| b. Humidity | | | |
| Logic Level | | | |
| Physical Size (L" x W" x H") | | | |
| Weight (lb.) | | | |
| Cost | | | |

SEE VARIAN 680 I