

*The New Standard
for DOS Enhancement
with mouse support*

Tree86™



**Log multiple drives
simultaneously for instant
access**

**View files with unparalleled
capability**

**DOS prompt is available at
a keystroke**

**Find all duplicate files or
others you specify**

**Point and shoot (even
across drives)**

**Copy to floppies and be
prompted for next disk**

Alter attributes

Hide/Unhide subdirectories

**Copy directory structures
from one drive to another**

It's not only what Tree86 can do for you, but the way it does it. Tree86 is the DOS enhancement utility that doesn't make you wait. From your first look you'll be impressed... clean, crisp screens with selections across the top that access logical categories for pull down windows. Choices are made with a mouse or the first letter of any item. From a graphic tree of your disk,

manipulate files or subdirectories on single or many drives.

Tree86 is a snap to use, but if you hit a snag at any point in the program, pressing [F1] or clicking HELP with the mouse gives you information about the feature you are using.

A tap of the slash key provides all the advantages of DOS and more with an environment that looks and feels just like DOS. All function keys work as they do with DOS. Plus the command line is easily edited, and all previous commands can be accessed from a buffer. A tap of a key returns immediately to the Tree.

Tree86 provides many technological advancements that take full advantage of the speed and power of modern hardware including built-in mouse support. The Zoom toggle utilizes enhanced graphics to show more information on a screen than EGA and VGA monitors can use the 43-50 row display. And Tree86 uses available expanded memory for data storage thus freeing your computer's memory for running programs under Tree86.

Immediate Directory Access

Tree86 displays the structure of the directories on your disk. As you move the cursor, the number of files and bytes in each highlighted directory displays. List any directory simply by pointing to it.

Listed files show filename, size, date, time and attributes. Once a subdirectory is listed you may leaf through the drive displaying files in the previous or next subdirectory or the root.

Multiple Drive Logging

If your system includes multiple hard or virtual drives, Tree86 provides a powerful tool to manipulate disk data among them. Automatically read them into memory or access when desired. Once they've been read, scroll through them to perform any Tree86 function. There's no wait. And with 3 keystrokes, you can recapture memory, unlog unused drives, or relog drives you've changed (like floppy drives).

Instant Access

Tree86 can display the tree immediately when you run Tree86. All you do is turn on a data file in the configuration program. Drives to be "remembered" can be specified so that even if additional drives are used in a session, only the drives desired are saved. And other drives display instantly when you want them.

Powerful and Flexible Find

Find duplicates displays all files with common filenames. Find All displays all files on a drive to work with them globally. Plus you can find individual files (using up to four simultaneous file specifications), files to be backed up, hidden files, or read-only files.

Point and Shoot

Select the files for sweep operations by tagging them. Tag options allow global tag, switching tags, or tagging a range of files. Point and shoot by selecting the target from a tree of any drive.

Instantaneous Sort

Sometimes the most important order for file listing is the way they are read from disk. Tree86 not only lets you sort by name, extension, size, date, time, path, or attribute, but it preserves the original unsorted order for your use at any time. You can also list files in ascending or descending order.

Changing Attributes

Display hidden, system, backup and archive file attributes and change them individually or in groups. And, even on groups with a variety of set bits, certain attributes can be changed globally.

Backup, Xcopy, Move, Erase, Copy, or Rename

Move files from one drive to another instead of copy and delete and when moving files within a drive, fragmentation of the disk can be avoided. For copy or move Tree86 tells you how much space is free on the target disk and the space required for the transfer. If the target has insufficient free space for the files, Tree86 prompts for new diskettes as needed. Never fear about overwriting files on the target drive unless you specify (globally or individually) to do so. Use Xcopy to duplicate entire subdirectory structures and copy files from one drive to another. This powerful feature is another way to perform backup operations.

Configuration

The configuration program lets you design the way Tree86 presents your drive information. Set up colors instantly on miniature Tree86 screens as you scroll through the color palette.

Set Program Options

You decide the way Tree86 first displays your disk data. Plus you can reduce Tree86's use of memory or save directory

structures for instant access even after your computer is turned off.

Directories-on-Demand

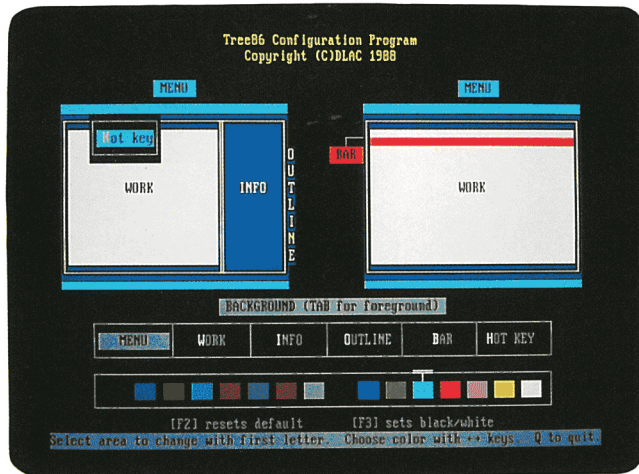
Make, remove, rename hide and unhide subdirectories quickly and easily from the Tree. And, rearranging your subdirectory structure in any order is as easy as pointing and shooting. Tree86 will automatically move directories and all their files.

Background Printing

Print while you continue to use the computer. Add more files to the print queue or cancel printing at any time. You can also print listed filenames or the Tree with the number of files and bytes listed for each subdirectory.

Total Disk and Memory Data

Current data about drives, files, subdirectories and



View and Snoop

View the contents of a file by pointing to it. Full scroll capability is provided as well as a host of other features.

Command Line DOS

For certain operations the speed and power of DOS is hard to beat. So Tree86 has provided an environment that has the look and feel of DOS with added benefits. We call it TreeDOS. Perform any operation. Run any program. Your function keys work as they do in DOS and the up and down arrow keys scroll through a command history. One key toggles between TreeDOS and the Tree or File Window.

Run Programs

From the File Window run any program by pointing to it. If your editor is specified, Tree86 integrates it so you can point and edit a file with the program you are personally accustomed to.

memory displays at all times from the Tree. JOINed, SUBSTITuted, and virtual drives are fully supported.

System Requirements

Tree86 functions with or without a mouse. It includes EGA-VGA color support with 43-50 row display mode option. It uses dynamic memory allocation and expanded memory, if available, for data. Tree86 operates on the IBM Personal System/2, PC AT, PC XT, PC and compatibles with 175k and DOS 2.0 or higher. Not memory resident. Not copy protected.

Tree86 will become your most used utility.

From the people who make PreCursor:

The Aldridge Company
2500 CityWest Blvd., Suite 575
Houston, Texas 77042
(713) 953-1940

See your dealer or call (713) 953-1940 for additional information.

Tree86 is a trademark of DLAC. IBM and Personal Computer AT are registered trademarks and Personal System/2 and Personal Computer XT are trademarks of International Business Machines Corporation.