

The Hard Disk Menu and Management System with mouse support



Multiple Menu Systems

File Management

Computer Usage Tracking

Security System

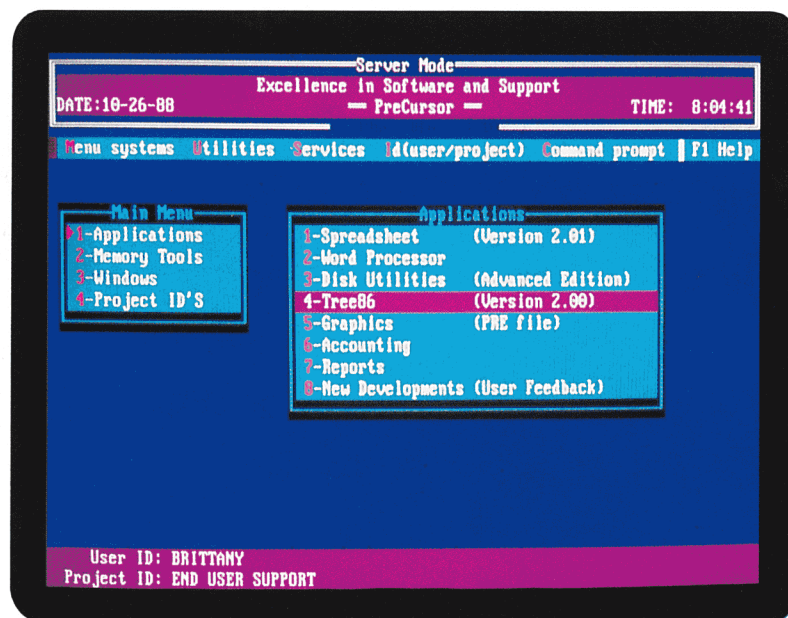
Advanced Programmable Options

PreCursor is the sophisticated menu system that makes access to the hard disk as easy as pressing a key. With unlimited menu selections and built-in utilities, PreCursor is the perfect user interface for all personal computers.

Menu creation is fast and easy with on-line help readily available. PreCursor features a pathfinder that makes setting up menu selections for software programs, BASIC programs, batch files, DOS commands or user created help files virtually automatic. Name your menu selection, type the executable filename, and PreCursor will automatically find and set the path. If you don't know the executable filename, PreCursor can help you find it.

PreCursor's built-in tree allows the inexperienced user to execute utility commands without having to be taught. Finding, renaming and backing up files can be accomplished easily by the novice. And best of all, PreCursor's format option is restricted to drives A and B so you don't have to worry about the hard drive being accidentally formatted.

PreCursor's password security system puts you in control. Restrict program access with verifiable user ID's or by password protecting menus, programs or exit to DOS. For billing and time management, PreCursor's optional computer usage tracking is unsurpassed. Record who is using the computer and exactly what it is being used for. Then select a report to analyze the information. With PreCursor's power and control the well designed computer system is complete.



Automatic Installation

Setting up a system for PreCursor is fully automated taking advantage of your computer's power. And because PreCursor respects the way you've set up your system, no changes will be made without your approval.

Automatic Menu Generation

When designing a menu you type the executable filename one time. PreCursor automatically finds and sets the appropriate path. No manual input of paths or subdirectories is ever required. If you are not sure of the filename, PreCursor can help you find it. And if you wish to use them, programmable features abound.

Rearrange Menu Items or Menu Pages

Needs and preferences change and PreCursor accommodates by letting you rearrange the order of your menus with the touch of a key.

Gateway to DOS It's the logical alternative to the memory resident jumble. When you are in the middle of designing your menu and something else demands your attention, the touch of a key can take you to DOS and back again without missing a beat.

BASIC and Nested Batch Files

When you select a BASIC program from your menu, PreCursor automatically loads BASICA for you. Also, from the menu you can execute batch files, even nested ones, and automatically return to the menu without any batch file alterations.

Parameters If a parameter can be passed to a program from DOS, it can through PreCursor too. Many popular programs use parameters to allow direct access to data files. PreCursor takes advantage of this by allowing

assignment of both fixed and variable parameters or a combination of the two.

Printer Setup A built-in menu with printer options is available for a variety of printers. Or, customize your own printer setup needs. This is a must for today's laser printers.

PreCursor's password security system allows you to restrict the use of programs to authorized users. If you wish to let a user sign on at the beginning of the work day and never have to be bothered by a password again, PreCursor has the way.

Triple Level Password Protection

PreCursor allows you to password protect any program or group of programs. Additionally, DOS access may be password protected, thereby restricting users to preprogrammed menu choices. And since your passwords can be recovered with the PreCursor diskette, you'll never have to worry about forgetting a password.

PreCursor's computer tracking capability keeps a record and can report to you exactly how your computer is being used. This feature is a must for billing, time management, or justifying hardware and software acquisition. A selection of reports can be produced to analyze your computer's use. These reports can be printed, viewed on the screen, or written to disk.

Verifiable User and Project IDs

PreCursor gives you the option of letting users input user and/or project ID's prior to selecting a menu item. And PreCursor can even check for invalid IDs.

Computer Usage Analysis

Individual usage records are maintained in a format easily transferred to a spreadsheet or

mainframe for departmental or company wide analysis.

Delete or Restore Records

Before reports are generated, the individual records may be viewed, deleted, or restored. In this way the computer usage log may be edited to contain only that information pertinent to the analysis.

Reporting Period

With PreCursor a time interval may be set to remind the user that the computer usage reports are due. If no interval is set and the log file grows larger than 50,000 bytes the user will be notified.

PreCursor's built-in utilities provide extensive file management capability. A repertoire of DOS commands and a full set of utilities that DOS doesn't provide are immediately available. And if security or control is important, access to the Utilities Menu can be given to just those users you designate.

Disk Space Warning

PreCursor keeps track of the space remaining on your hard disk and warns you as the space becomes critically low. You no longer have to risk running out of space or be concerned about disastrous system crashes caused by a full disk.

Diskette Format You won't have to worry about accidentally formatting the hard disk either, because PreCursor's diskette format feature is restricted to Drive A and B. You can feel safe in letting even novices format diskettes.

Backup System PreCursor's powerful tag and backup capability, makes backing up your system so easy you won't have an excuse to put it off. PreCursor can also do daily or total backups.

Graphic Tree Based Utilities

From PreCursor's tree you may log any drive and perform any of the following options.

Find Files Find all files, files with up to 4 file specifications, duplicate files and those that have not been backed up to allow you to easily perform operations on them.

Tag and Sort Files Sort options on file lists are extensive and instant. And a variety of tag options facilitate bulk operations on files.

Copy, Rename, Move Files

From the interactive tree, you can point and shoot to copy, rename or move a file or groups of files without having to type paths.

File Browser A full featured view program lets you see the contents of files. It automatically makes word processed files readable or you can display files in HEX and ASCII.

Advanced Options for MIS and Systems Professionals

PreCursor's API hooks can extend the PreCursor interface beyond any structured menu system to satisfy your exact requirements. A user defined menu can create menus on other computers automatically. And, modifying or extending the standard default options adds open-ended flexibility.

System Requirements

PreCursor operates on the IBM Personal System/2, PC AT, PC XT, PC, and compatibles with 128K and DOS 2.0 or higher. Not memory resident. Not copy protected. 100% of system RAM is turned over to applications. Compatible with partitioned, remote, and networking environments.

See your dealer or call (713) 953-1940 for additional information.

THE ALDRIDGE COMPANY
2500 CityWest Boulevard, Suite 575
Houston, Texas 77042
(713) 953-1940

IBM and Personal Computer AT are registered trademarks of International Business Machines Corporation. Personal System/2 and Personal Computer XT are trademarks of International Business Machines.