



PStill™ for Mac OS X

by Frank Siegert and Andrew Stone

PDF Conversion Technology (c) Frank Siegert 1989–2003

PS and EPS to PDF Conversion

PStill is a user friendly PostScript to PDF convertor with many options and features. You can drag .eps and .ps files onto the application icon or the convertor window to immediately convert a file, or you can set the various options and then convert the file.



Features	2
Installation	5
Quick Start	8
Loading	10
Automatic	11
File Types	14
Combining Files	15
Making a Poster	17
Options	23
Preferences	30
Misc	32
Watched Folders	35
PDF	38
Hidden	41
Font Management	43
Job Management	49
View EPS Everywhere	52
Support	53
Developer's API	55

PStill Features:

Conversion Features:

- Drag and drop conversion: files or folders
- Converts EPS (even with Preview) to PDF
- Converts PS to PDF easily
- Converts image files (TIFF, GIF, JPG, PNG, etc.) to PDF
- Converts PDF files to smaller PDF files [save 50-70%!]
- Combines multiple PS, PDF, or image files into one PDF document
- Preserves the layout as best as possible
- Converts graphics color model automatically to CMYK
- Automatically sizes EPS files
- Handles font subsetting - embeds just glyphs used to save space
- Recycles images - same image even if scaled or rotated output only once
- Accepts Type 1 and Type 3 fonts
- Outputs full or subsetted Type 1 in PDF results
- Embeds uncludable fonts automatically as paths or bitmaps
- Skips totally empty pages in PDF output
- Proven and reliable conversion engine
- Tries to guess page size from DSC comments
- Developers can use the PStill engine via interapplication communication
- Adobe Illustrator, Macromedia Freehand, and other files without EPS/PS file extensions can be converted

PStill Features – 2

Output Customization:

- Control dots per inch: 72–600
- Set page size to A2–A5, letter, legal or custom
- Optionally reverse page ordering
- Optionally output pages 2, 4, or 8 to a page
- Optionally add page numbers
- Optionally scale or tile output
- Posterization: Enlarge single–page PDF and tile output to standard–sized pages
- Compress output with patent–free compression
- Control output image quality:
 - JPEG quality
 - Downsampling
- Control overprinting and spot colors
- Map transfer functions from PS
- Arbitrary float precision to 8 digits
- Control minimum linewidth to prevent burnout
- Rotate output 90, 180, and 270 degrees
- Optionally write text as paths
- Optionally add page transition effects

PStill Features – 3

Application Features:

- Watched Folders for automated PDF conversion
- Integrates with standard Print dialog for PDF workflow
- Choose folder where output is produced by default
- Log window with verbose logging of conversion process
- Job Control – stop one or all conversion jobs
- Drag out converted files – all jobs are available for dragging
- Font Management – automatically imports and reads your PS fonts
- Drag on new fonts from non-standard locations
- Choose to automatically convert dragged on EPS/PS files
- Save and reuse preference sets for different types of jobs
- Save preference sets in watched folders to automatically apply preferences to conversions

PStill Installation

1. Installing

If you download PStill from <http://www.stone.com/NewDownload.html>, you will have a disk image (.dmg) file. Double-click the image to mount it, and copy PStill to your Applications folder.

From the Stone Design CD: Drag PStill to your Applications folder.

2. Licensing

When you first launch PStill, a license panel comes up; you can run PStill in Demo mode, get a trial license, or choose to register it at that time. You can always select **PStill->License...** to bring up the license panel. If you don't have a license string, contact Stone Design. For more information on licensing Stone Design applications, see our licensing tutorial.

3. Installing your PostScript Fonts

PStill needs PostScript fonts in order to convert PS and EPS files containing fonts to PDF. Since PostScript fonts are copyrighted programs, no fonts are distributed with PStill. However, PStill will attempt to locate all your PS fonts in standard locations and link them into itself. Then, you are prompted to compute the Widths and Metrics of these fonts so that PStill can convert PS text. Choose OK to both these panels; it takes a few moments, but you only do it once. See Font Management for more information on this subject.

Note: If ROOT installed PStill, then ROOT must run PStill and install the fonts because of restricted write permissions.

PStill Installation – 2



No PS fonts? No problem! Just grab a copy of Stone Design's FREE TrueBlue which will convert your Mac OS TrueType fonts to PS fonts.

PStill Installation – 3

Reinstallation Note: If you are reinstalling or updating PStill version 2.5 or greater, you can easily reinstall your fonts:

- Before you delete or replace your current version of PStill, choose **Tools->Cache Fonts** (Shift-Cmd-F). This will write the font information out to /Library/Application Support/Stone/PStill/PSFonts.
- After you install the new version of PStill, choose **Tools->Restore Fonts** (Option-Cmd-F). This will read in the font information stored in /Library/Application Support/Stone/PStill/PSFonts.

If you want to change the location used to cache your fonts, see Hidden Preferences.

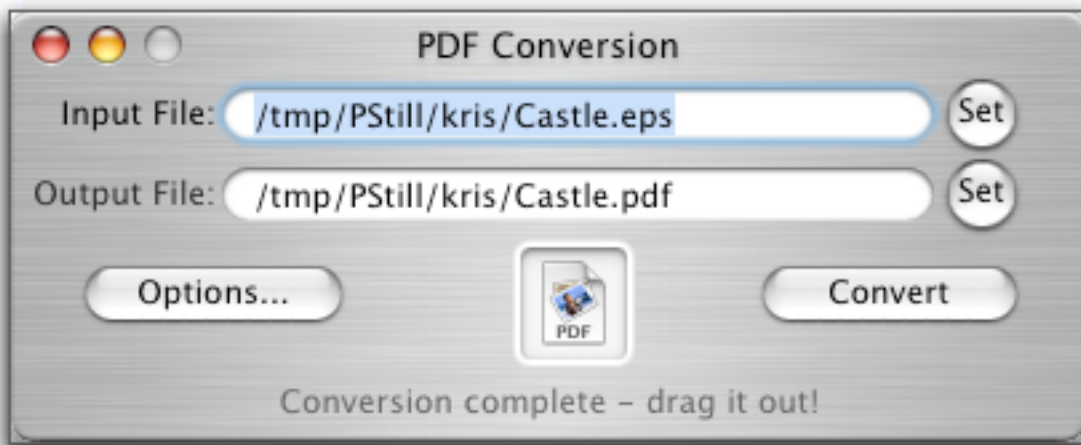
5. Ready for action

Drag on some PS or EPS (or image or PDF) files and go! You can also set your Preferences now if you wish.

Quick Start

Just drag an EPS, PS, image or PDF file onto the Conversion window.

By default, PStill will automatically convert your file using default conversion values set in Preferences. You can change this behavior and all of the conversion options. You can do bulk processing by dropping on a group of EPS/PS files or a folder of files.



You can set the input and output file names by either typing them in, or using the Set buttons to bring up standard open and save dialogs.

Options... lets you set conversion parameters. **Convert** starts the job in a separate process so you can cancel the job by selecting **Conversion->Stop Job** (Cmd-K).

Quick Start – 2

When the file has completed conversion, you can either double-click it to open it in your favorite PDF viewer or web browser, or drag the file icon from the icon well and drop it into a mail message, another application that accepts drag and drop, or into a Finder window.

Loading a Job – Manual

To set the file or files for PStill to convert, you can

- choose **Conversion->Open...** (Cmd-O) and select a single file, multiple files, or a folder to convert
- drag a single file, multiple files, or a folder containing files to the PDF Conversion window
- drag a single file, multiple files, or a folder containing files to the PStill icon in the dock or PStill's icon in the Finder.
- in the PDF Conversion window, click the Input File Set button and use the Open File dialog to find the files or folder you want to convert

When you drag in or open multiple files, PStill will immediately create jobs for all the files using your current Preference settings and begin processing them. To control these jobs, see Job Management.

When you drag in or open a single file, PStill will automatically process the file if you have checked the Automatically convert checkbox in the Misc tab of the Preferences window. Otherwise, PStill will wait for you to click the Convert button before creating the job.

To **clear the PDF Conversion window**, choose **Conversion->New** (Cmd-N).

Loading a Job – Automatic

You can easily make PStill part of your automated workflow.

To **automatically convert files**, set one or more watched folders in the Watched Folders tab of the Preferences window. PStill will periodically check these folders and automatically convert any new files that have been added. If you place a saved Preference Set in the watched folder, PStill will use those saved preferences during the conversion.

Automatic processing from the Print dialog

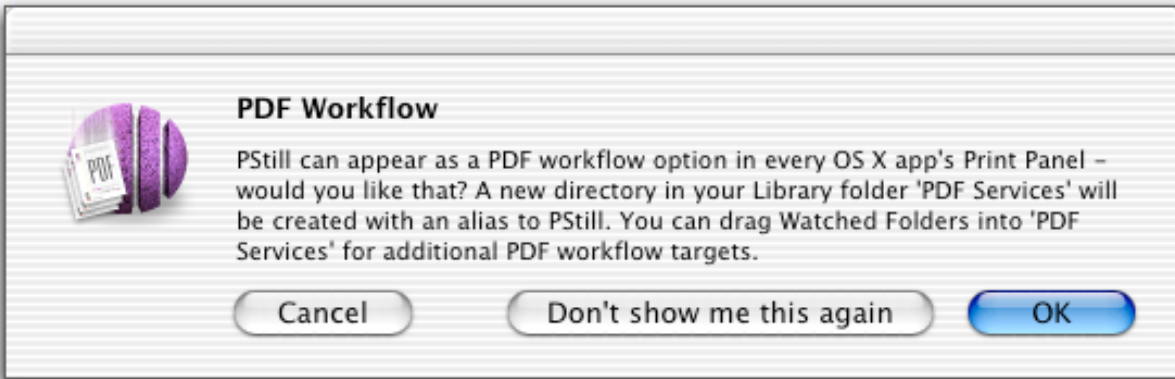
Mac OS X lets you save PDF files from the standard Print dialog of all applications. Under Mac OS X 10.2.4 and greater, you have the option to perform post-processing on the resulting PDF file directly from the Print dialog.

To optionally send PDF files created from the Print dialog directly to PStill, you need to add an alias to the PStill application in /Library/PDF Services or ~/Library/PDF Services.

PStill can add an alias automatically. When you launch PStill and no alias is present in one of the PDF Services folders, PStill will display a dialog asking if you want to create one:

PStill can appear as a PDF workflow option in every OS X app's Print Panel – would you like that? A new directory in your Library folder 'PDF Services' will be created with an alias to PStill. You can drag Watched Folders into 'PDF Services' for additional PDF workflow targets.

Loading a Job – Automatic – 2

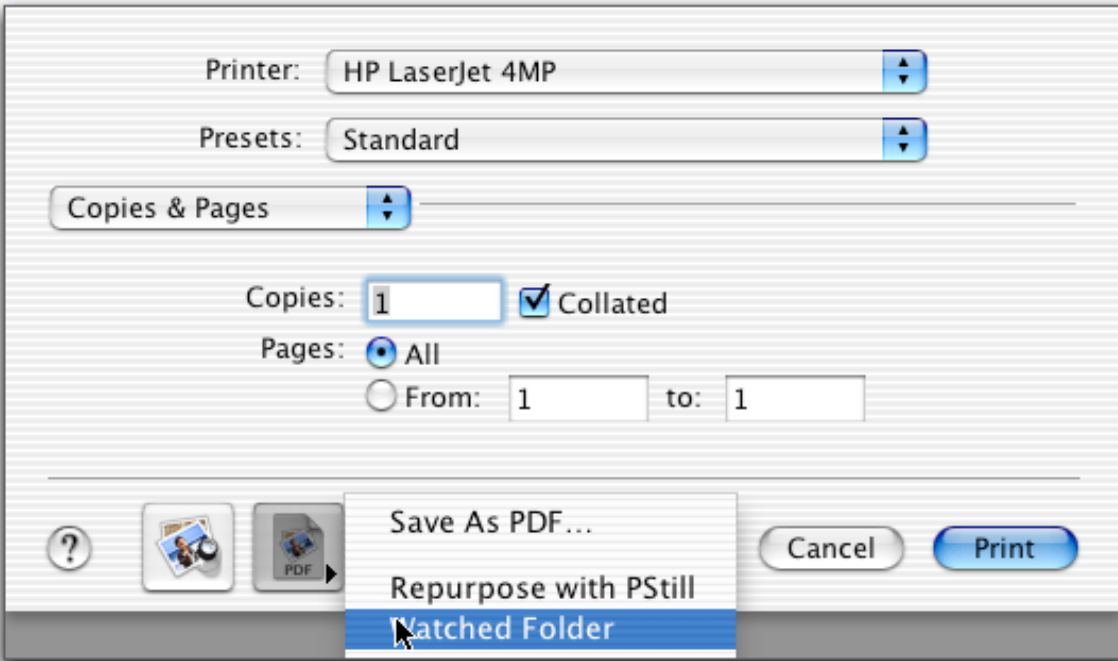


You can choose to add the alias, cancel, or, if you know you'll never want to add an alias, tell PStill never to ask. If you choose OK, PStill will create an alias of itself with the name "Repurpose with PStill".

You can also add folders and aliases to folders to the PDF Services folder. This allows you to save PDF directly from the Print dialog to a watched folder for further automatic processing.

Once you've added items to the PDF Services folder, all Print dialogs will show a PDF button. Clicking on the button will display a menu of options, including Repurpose with PStill.

Loading a Job – Automatic – 3



To reprocess the PDF file created by the Print dialog with PStill, choose Repurpose with PStill. PStill will use the current Preference settings for processing.

To add the PDF file created by the Print dialog to a watched folder, choose the watched folder's name from the menu.

Loading a Job – Types of Files

PStill can convert conforming **PostScript (.ps)** and **Encapsulated PostScript (.eps)** files to PDF.

PStill can also convert most commonly-used **image** files, including .tif, .gif, .png, and .jpg files.

PStill can also redistill **PDF** files. This can be used for:

- Creating much smaller PDF files. This is particularly useful for files produced by the standard Mac OS X print to PDF file.
- Downsampling images, depending on the purpose of the PDF file.
- Subsetting fonts and making sure that only Type 1 fonts are included.
- Creating “fontless” PDFs by converting all the fonts to outlines.

Here’s a complete list of file types that PStill can convert to PDF:

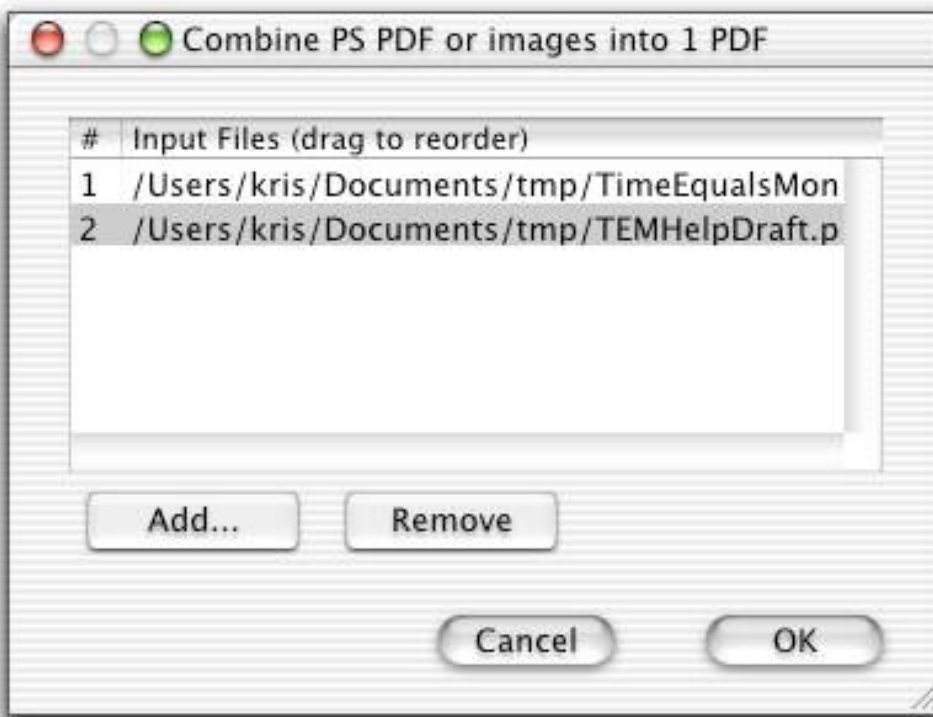
ps PS eps EPS ai pdf PDF tiff tif gif jpeg jpg icns png bmp ico cur fpx fpix pntg pnt
mac psd sgi rgb targa tga qtif qti pict pct TIFF TIF GIF JPEG JPG ICNS PNG BMP
ICO CUR FPX FPIX PNTG PNT MAC PSD SGI RGB TARGA TGA QTIF QTI PICT
PCT

Loading a Job – Combining Multiple Files

Combining multiple files into one PDF file

PStill can combine several files into one multi-page PDF file.

To **combine multiple files**, choose **Conversion->Combine Many...** (Shift-
Cmd-M).



Loading a Job – Combining Multiple Files – 2

To **add files to the Combine Many window**, drag and drop files from the Finder or click the Add... button and use the standard Open dialog to select files.

To **rearrange the order of the files** in the Combine Many window, drag and drop the files within the window.

To **remove a file from the window**, select the file by clicking on it and click the Remove button.

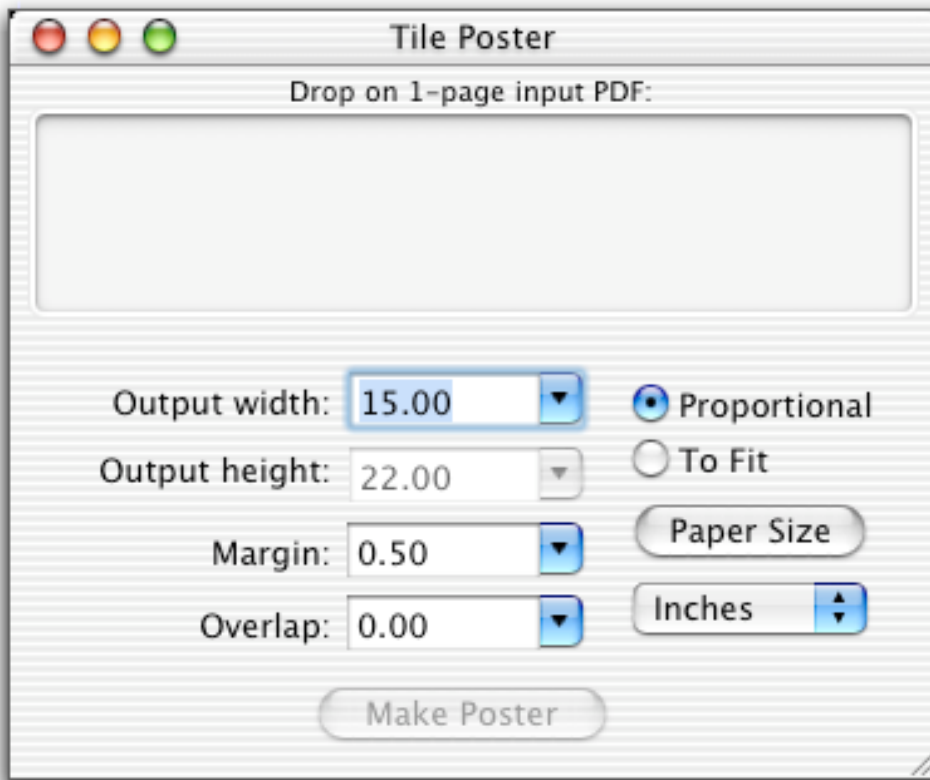
To **remove all the files from the window**, close the window, choose Conversions->New, and reopen the window.

To **create the job to convert the files to PDF and combine them into one PDF file**, click the OK button. If you've checked the Automatically convert checkbox in the Misc tab of the Preferences window, the job will start immediately. Otherwise, you'll have the chance to set the Output Options before clicking the Convert button on the PDF Conversion window.

Loading a Job – Making a Poster

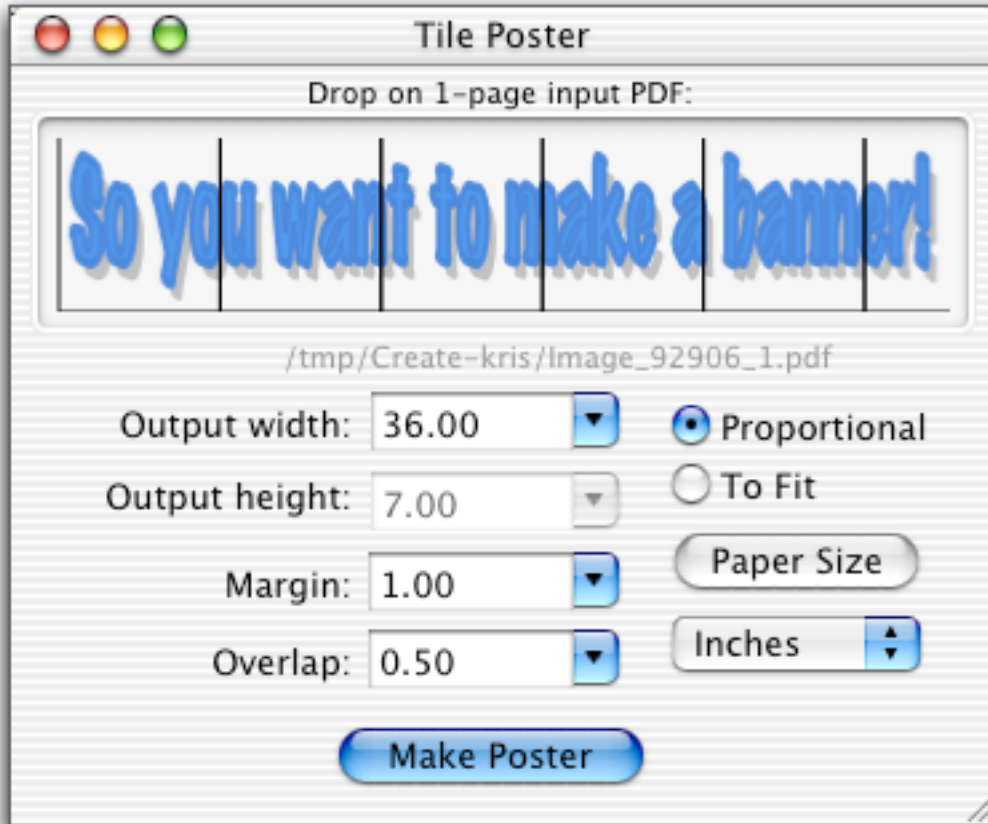
PStill can enlarge a single-page document and then create a multiple-page PDF document that divides the large document into pieces that can be glued or taped together to make a poster.

To **make a poster**, choose **Conversion->Tile Poster...** (Cmd-T). This displays the Tile Poster window:



Loading a Job – Making a Poster – 2

Drag a single-page PDF document into the Tile Poster window. For an example here, we're going to use a single line of text, created in Create®.



Loading a Job – Making a Poster – 3

To **set the output size**, use the Output width and Output height fields.

To **set the width only**, and have the height calculated, select the Proportional radio button.

To **set both the width and height**, and have PStill scale as necessary, select the To Fit radio button.

To **change the units** used in the fields, use the Units dropdown menu. You can specify inches, centimeters, points, or picas.

To **set the margin** (the blank space around the edge of the page, use the Margin text field.

To **set the overlap** (the amount of the image that will be duplicated on adjacent tiles), use the Overlap text field. The overlapping areas will be printed within the area allocated for the margin, so the overlap must be less than the margin. An overlap allows a margin of error when cutting and also allows you to have some control in where you cut.

Example: Your printer requires a .5 inch margin. You want a 1 inch overlap to give you some flexibility when pasting up your tiles. Set the margin to 1.5 inches and the overlap to 1 inch.

Loading a Job – Making a Poster – 4

To **set the paper size** that will be used to print the tiles, click the Paper Size button. This will display a standard page setup dialog.

In our example (a horizontal banner), we are able to save paper by selecting a horizontal paper orientation:

Vertical
letter-
sized
paper



Horizontal
letter-
sized
paper

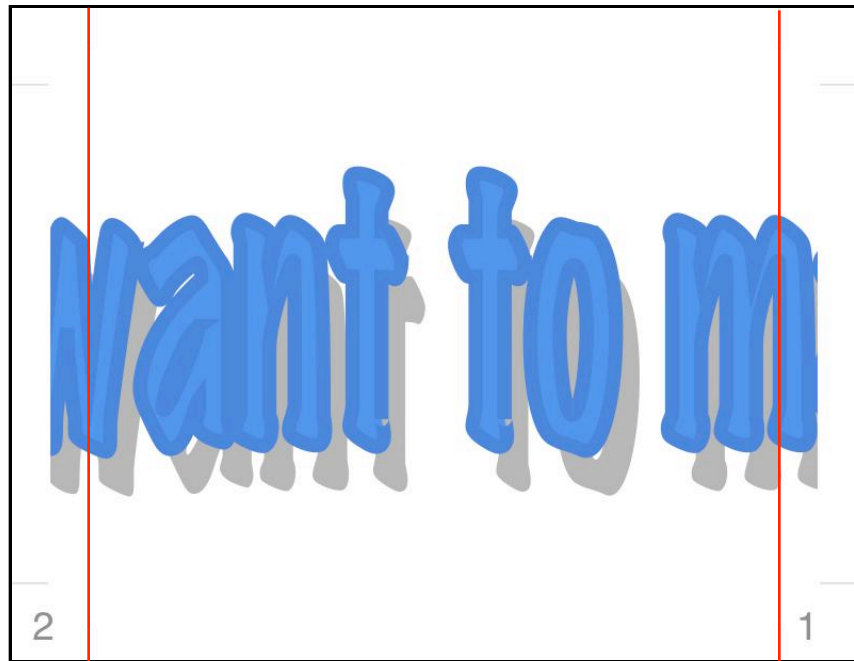


Loading a Job – Making a Poster – 5

When you've set up the tiling options, click Make Poster. PStill will generate a multi-page PDF document that can be printed and then glued or taped together to make the enlarged poster or banner.

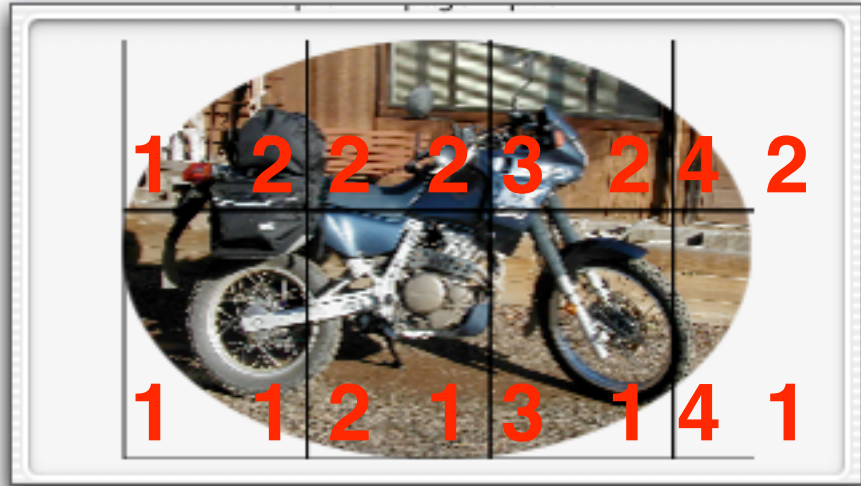
Here is page 2 from our example banner:

The two red lines are not part of the document; they have been added to show the margin (cut lines) and the amount of overlap. The numbers indicate where the page goes in the tiled grid. The number in the lower left corner is the column number; the lower right number is the row number.



Loading a Job – Making a Poster – 6

This shows the numbering for a multi-row, multi-column grid.



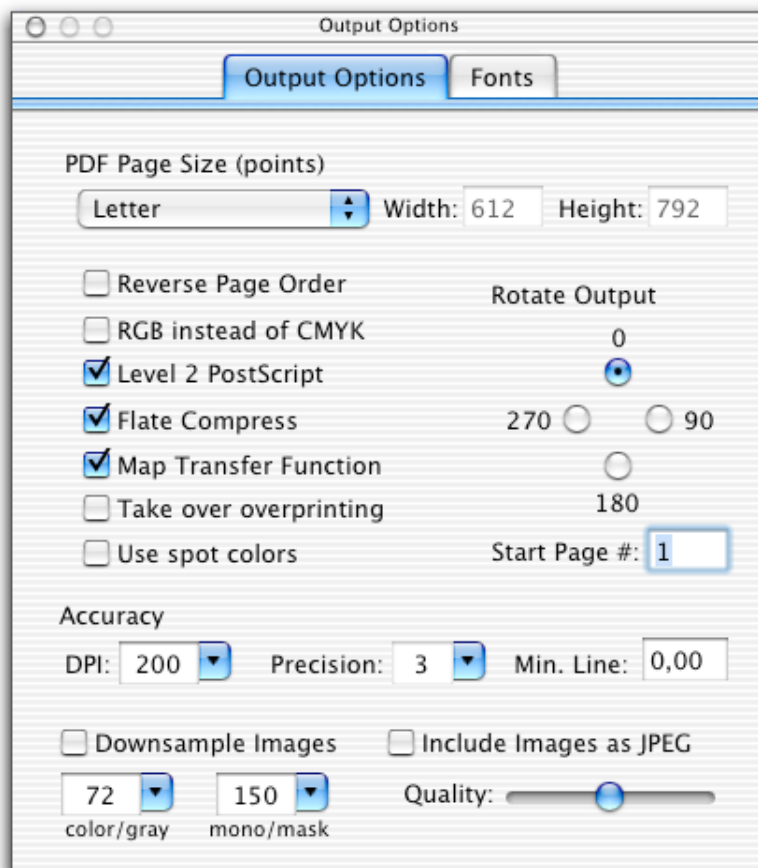
Note: The Tile Poster option both enlarges and tiles a single-page document. To **tile an already-oversized single-page document**, see the output conversion scripts in Preferences. There are two scripts for tiling: one to A4-sized paper, and the other to letter-sized paper.

PStill Conversion Options

PStill gives you many controls over the conversion process. The defaults are set in the Preferences window (Cmd-5), and can be modified for each job.

To **set the options for the current conversion job**, choose **Conversion->Options** (Shift-Cmd-O) or click the Options button in the Conversion window.

To **reset the options back to their default values** set in Preferences, choose **Conversions->New**.



PStill Conversion Options – 2

PDF Page Size

You can choose a standard page size, or "Take From Job", which is ideal for EPS and when the information can be read from the PS. Or you can choose to output to a set size, or a Custom size, which will enable you to type into the Width and Height fields. When "Take From Job" is selected, the values in Width and Height are used as maximums; if you find your output to be clipped, increase these values as needed. Only the amount required will be used.

Reverse Page Order: When checked, PStill will output the pages in reverse order, so if the input PS document goes from pages 1 to 7, this will output the PDF with page 7, Page 6 and so on.

RGB instead of CMYK: When checked, PStill generates output with RGB model; these colors are brighter and less murky than print CMYK.

Level 2 Postscript: When checked, PStill will behave and announce itself as a Level 2 PostScript device. For converting embedded TrueType fonts, this must be on and we recommend that you leave this checked.

Flate Compress: When checked, PStill will compress the PDF document using a non-patented, free compression system. This makes small PDF files, but the files cannot be viewed by PDF viewers prior to PDF Version 1.2. See the Misc tab of the Preferences window for options related to flate compression.

PStill Conversion Options – 3

Map Transfer Function: When checked, PStill will attempt to map native PS transfer functions to PDF. Highly recommended.

Take over overprinting: This option has no effect if you do not plan to color separate the PDF output. You don't see overprinting on screen or when printed on a normal composite printer (gray/color) printer.

- for documents intended for office and internet use, turn this option off
- for prepress work you MAY turn this option on, if
 - a) your workflow needs it later
 - b) you trust the overprinting setup in your PS input

Overprinting can have negative effects. If overprinting is applied wrongly the separation can leave areas that should 'knock-out' untouched and this may cause very colorful but wrong color areas. No overprint will produce correct color results but may cause white edges when output plates are not exactly aligned during printing.

Use spot colors: This option is also for color separations. When unchecked, the whole job will be output using CMYK or RGB colors. When checked, spot colors in the PS input will be preserved.

Rotate Output: When anything other than 0 is selected, PStill will rotate the output PDF page by 90 (on its side), 180 (flipped upside down), or 270 (on its other side) degrees.

PStill Conversion Options – 4

Start Page #: Sets an internal variable within the PDF file that indicates the logical starting page number.

DPI: Choose a standard from the pop-up or enter any value between 72 and 800 to control converter's dot per inch resolution for placement of graphics. 150 is a good default.

The DPI setting does not mean the output is rescaled to this setting. It is the placement accuracy and gives a measure for placement of vector points. If an EPS does a setflat to very small values (requesting a lot of curve points) and the DPI is higher than 300 it is possible for PStill to take a lot time to process and even fail with a limitcheck error (if it runs out of path space). This does not mean the EPS is faulty; just lower the DPI and it converts well. Anything above 300 dpi is only needed for utmost precision (CAD conversions with lots of small details). Acrobat Distiller calculates internally with 144 DPI.

Precision: Choose between 0 and 6 to determine the float precision of elements in the resulting PDF. 0 is to 1/100th of a point, 6 is 1/100,000,000 of a point. The higher the number, the larger the PDF file. Too low of a setting will cause small placement shifts in the output. 2 is a good default value.

Minimum Line Width: 0.0 width lines can cause "burnout" or be so fine that they won't be seen in the output film or paper. This replaces instances of 0 width lines with entered value. .15 might be a good value if you want very fine, but distinct lines.

PStill Conversion Options – 5

Include Images as JPEG: When checked, PStill will compress raster (gray and color) images using the JPEG compression method, resulting in much smaller output files with some loss of image quality. You can set the quality level with the slider: slide to the left for lower quality/higher compression and to the right for higher quality/lower compression.

Downsample Images: If checked, then images are downsampled to the DPI in the fields. One field is for color or grayscale images and the other is for monochrome images.

Typically, if you're creating PDF for the web, you want 72 dpi for color, and 150 dpi for B&W.

If you're creating PDF for standard printers, 300 DPI is usually adequate.

For lossless preservation of image quality, uncheck "Downsample Images".

Images can be included as compressed JPEG's with or without downsampling.

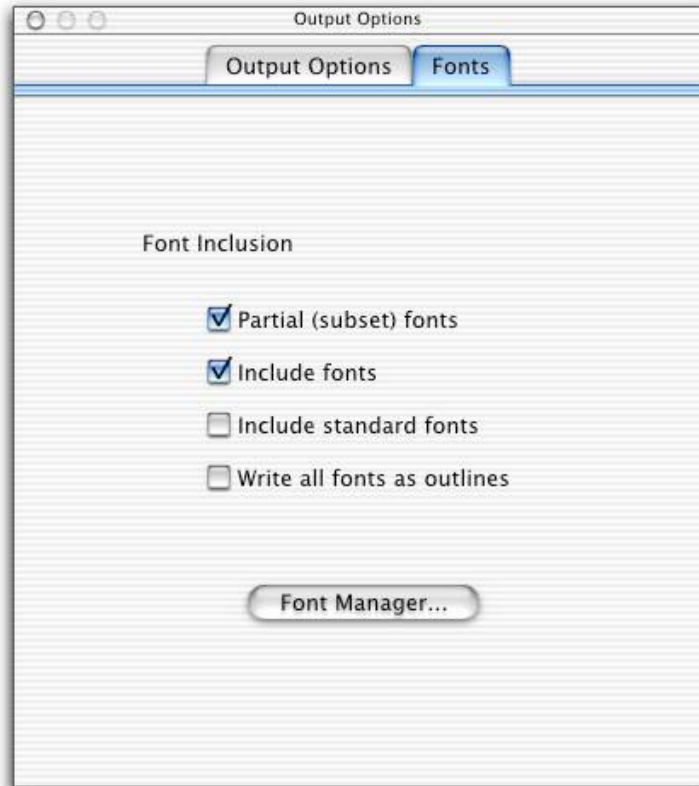
PStill Conversion Options – 6

Font Inclusion

Partial (subset) Fonts:

When checked, PStill will attempt to include only the PS outlines of the actual glyphs used. For example if you had "ABC" in Hobo, instead of including the entire Hobo font, it would include only the glyphs 'A', 'B', and 'C'. Results in smaller PDF results and may help avoiding copyright problems with regards to fonts.

Include Fonts: When checked, PStill will attempt to embed the fonts used by the PS or EPS document in the output PDF file. The [Font Manager...](#) button brings up the [Font Manager](#) window.



PStill Conversion Options – 7

Include Standard Fonts: When checked, PStill will attempt to include all 35 standard PS fonts, which will result in a non-standard PDF! Use this with extreme caution; you are alerted when you check this box.

Write All Fonts As Outlines: When checked, PStill will convert all text operations in the PDF to outlines. This may result in large files but may be desirable in some environments. Be sure to set the precision to a value greater than 2 for best results.

The Font Manager... button brings up the Font Manager window.

PStill Preferences

Preference settings control the initial settings of the Options window. In addition, there are some settings that can only be made in the Preferences window.

To open the Preferences window, choose **PStill->Preferences...**

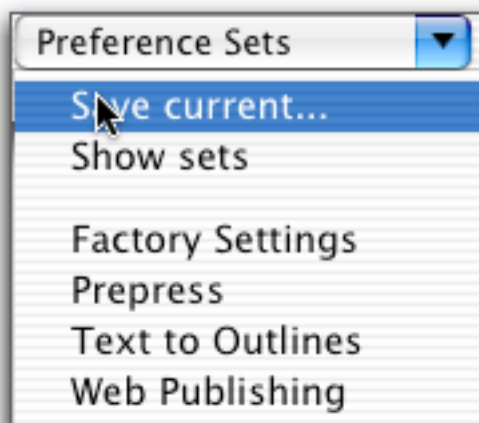
Saved Preferences

The current set of Preference settings is always automatically saved and restored when you restart PStill. However, you can also save additional sets of Preferences for reuse with other jobs.

To **save your current Preference settings in a named file**, choose **Preference Sets->Save current...** in the Preferences window.

Use the resulting Save File sheet to choose a location for your preference set. By default, preference sets are stored in ~/Library/Application Support/Stone/PStill/Preference Sets/.

To return the Preferences settings to their original values, choose **Preference Sets->Factory Settings**.



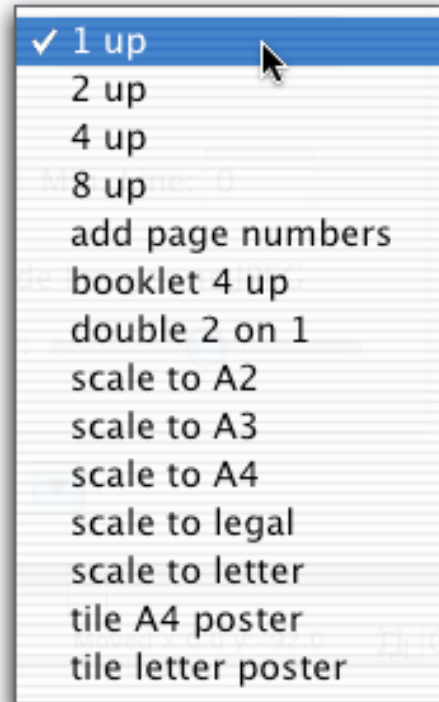
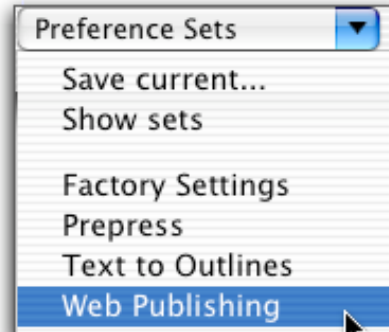
PStill Preferences – 2

PStill provides some Preference Sets that are useful for particular purposes. For example, the Web Publishing set of preferences, downsamples images and lowers the accuracy settings.

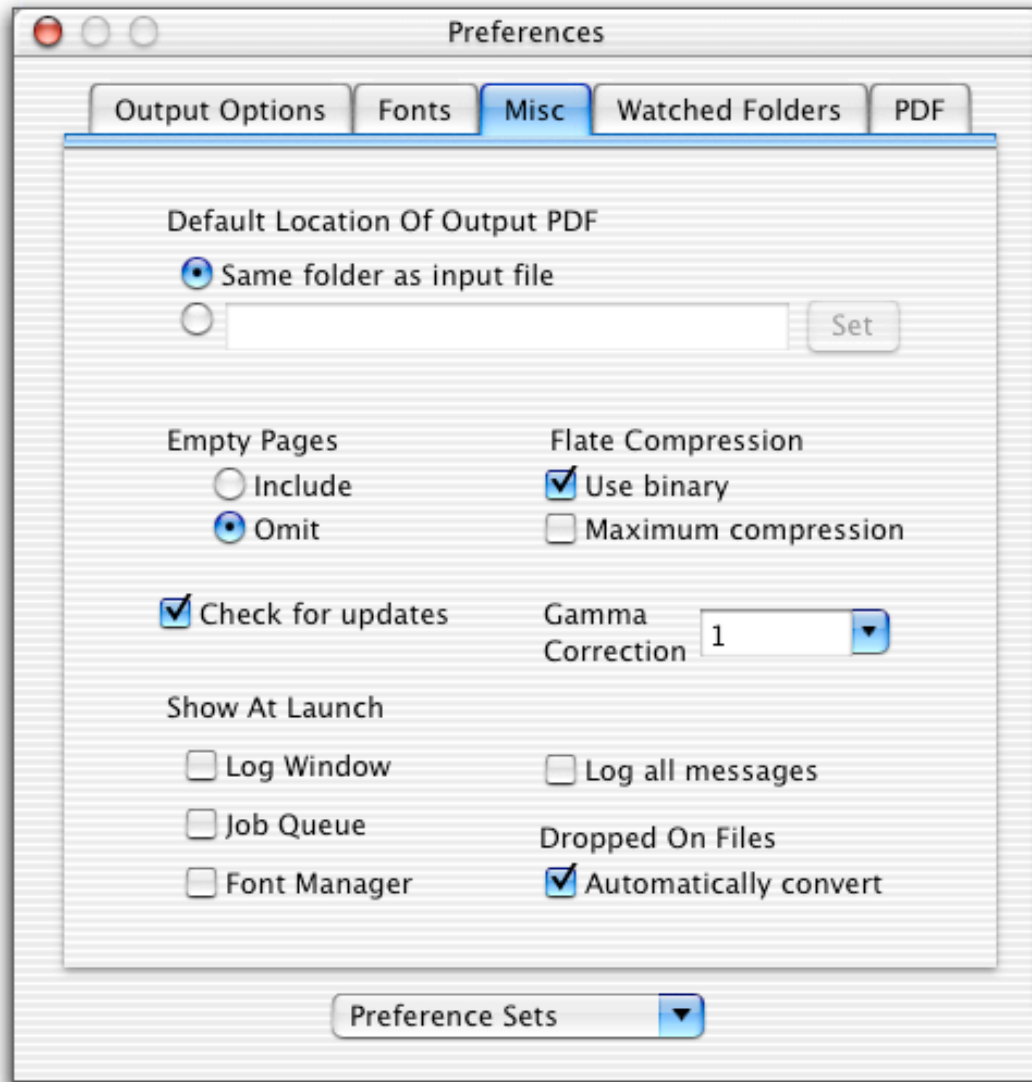
Special Output Conversion

These output options are only available from the Output Options tab of the Preferences window. These options include:

- N-up processing: Place 2, 4, or 8 job pages on 1 output page, allowing you to save paper or make booklets
- Add page numbers
- Scale output to fit on specific paper sizes
- Tile the output of documents with large page sizes to print on smaller paper sizes. **Note:** this only works with single-page documents.



PStill Preferences: Misc



PStill Preferences: Misc – 2

Default Location Of Output PDF

So you can easily drag and drop PS/EPS files, PStill tries to be smart about naming the output file, and where it locates it.

To **place the PDF output files with the input files**, select Same folder as input file.

To **choose another location for your PDF output files**, select the second radio button. Click the Set button to bring up a standard Open dialog, or type a full pathname to an existing, writeable folder on your computer or network.

Empty Pages

To **choose whether or not you want your output to include any empty pages** in the original input, use these radio buttons. The default is to omit empty pages.

Flate Compression

These options control the compression algorithm used when you check Flate Compress in the Output Options tab.

Use binary: Gives you a smaller output stream. We recommend that you leave it on.

Maximum compression: Check this if you're willing to let PStill spend more time processing in exchange for a smaller output file.

PStill Preferences: Misc – 3

Gamma Correction

To **lighten or darken raster images** included in your output file, choose a gamma correction value other than 1.

Show At Launch

To **make a tool window appear when you launch PStill**, check the checkbox for that tool. See Job Management and Font Management for more info on these tools.

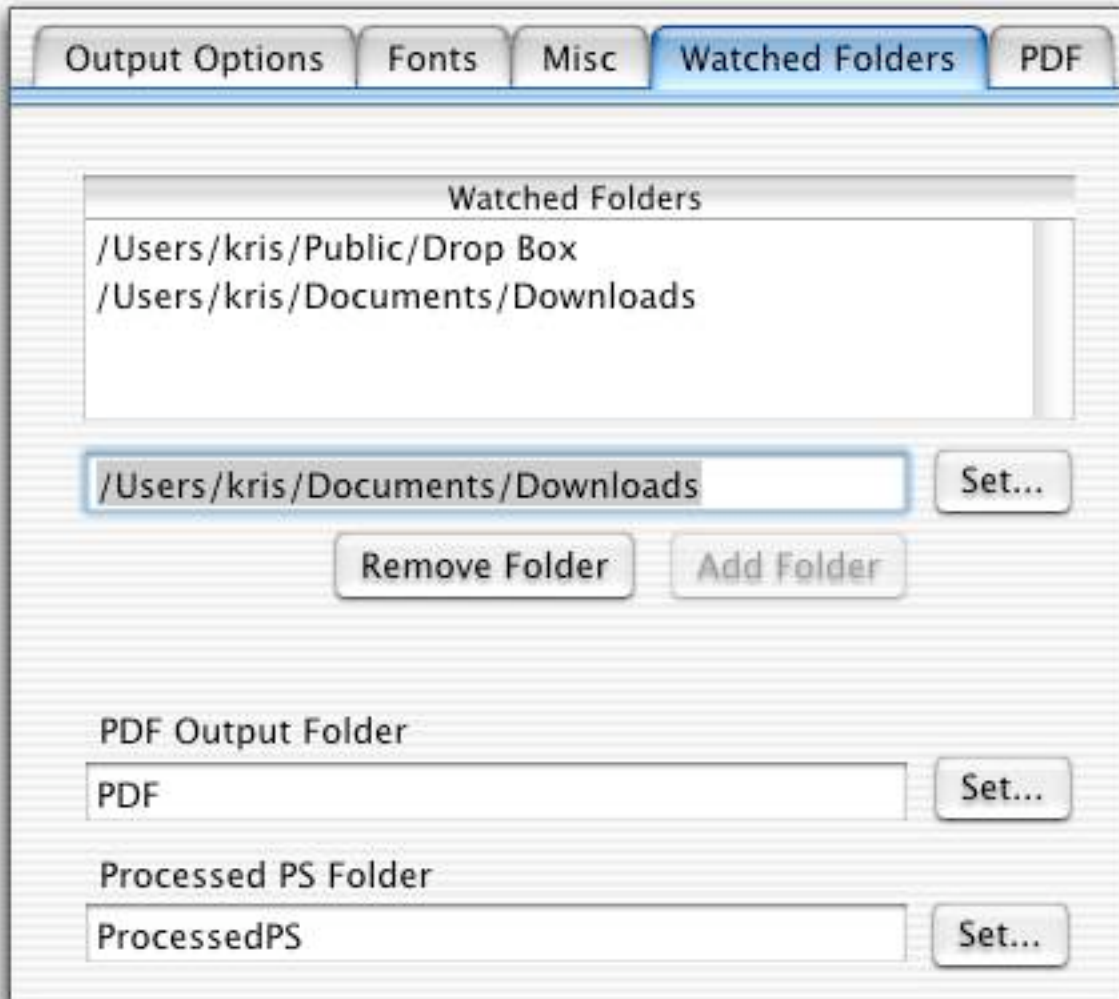
Log All Messages

This will produce verbose output from the conversion engine. Useful to monitor exactly what options were set and what errors or warnings occurred during conversion. Choose **Tools**→**Show Log** to see these messages.

Automatically Convert

When checked, PStill will run the conversion immediately upon dropping EPS/PS files onto the Conversion window or dock icon. Note that you can drop on folders of EPS/PS as well. If you always need to set options, then uncheck this box. However, when you drop on more than one file or a folder of files, PStill will automatically convert all the files, regardless of this setting.

PStill Preferences: Watched Folders



PStill Preferences: Watched Folders – 2

Watched Folders

You can specify a list of various folders that will be periodically checked to see if any files have been added. If a file that PStill can convert is found, it will be automatically converted to PDF, and placed in the Processed PS Folder.

To **add folders**, click the Set... button and use the Open File dialog to select a folder. You can also type in a path in the text field and click Add Folder.

To **remove a folder**, select a folder in the folder list, and click Remove Folder.

PDF Output Folder

By default, PStill will place the newly converted PDF file into a sub folder of your watched folders named "PDF". You can also specify a single path on your network for all watched folder PDF conversions to be placed into. Click Set... and choose a folder.

Processed PS Folder

PStill will move the file to be processed just before conversion to a folder named "ProcessedPS" inside the watched folder. You can also specify a single path on your network for all watched folder input files to be placed into. Click Set... and choose a folder.

PStill Preferences: Watched Folders – 3

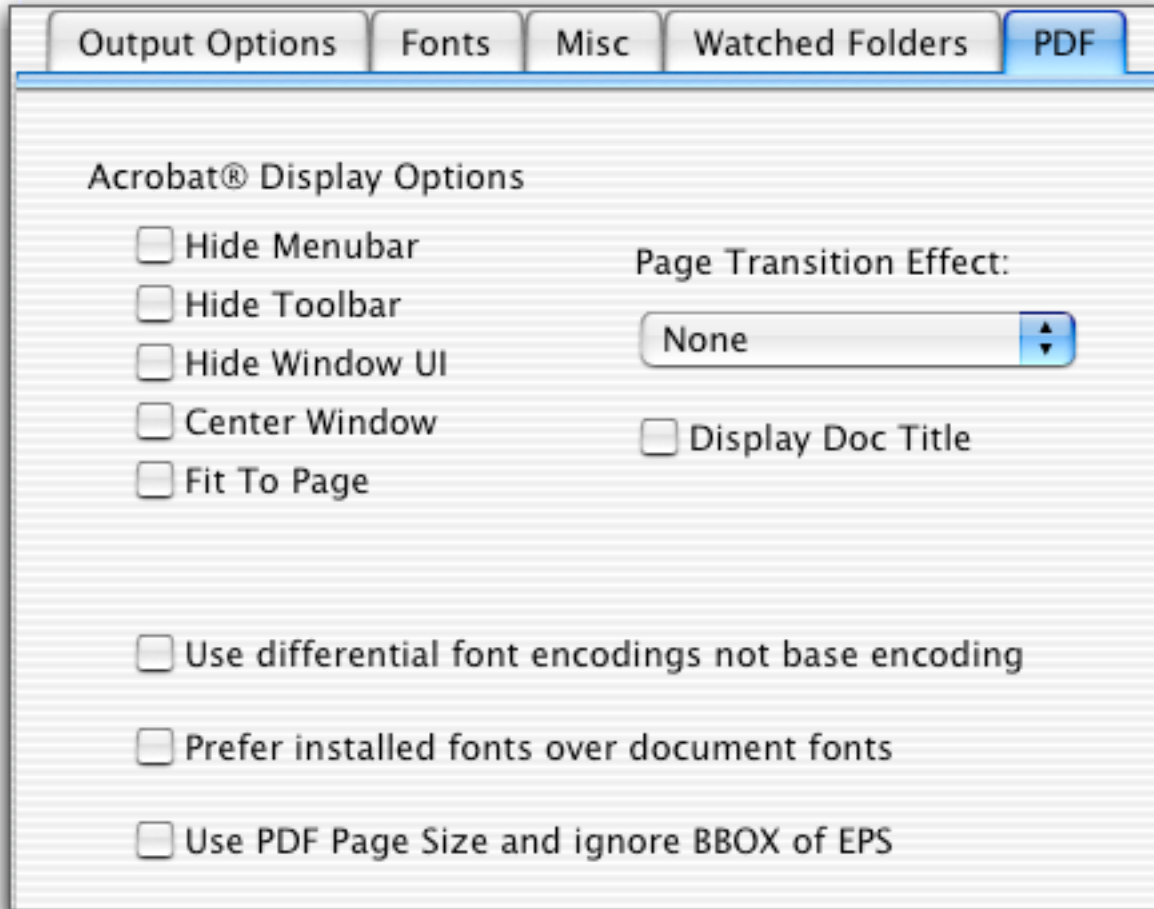
Preferences Sets

To apply a set of Preferences to a particular watched folder:

1. Set up the Preferences as appropriate for the files that will be added to the watched folder.
2. In the Preferences window, choose **Preference Sets**→**Save Current...** and save the set to the watched folder.

PStill will use that saved Preference Set when processing files placed in that watched folder.

PStill Preferences: PDF



PStill Preferences: PDF – 2

The Acrobat® Display Options control settings used by Acrobat Reader when displaying PDF files.

Note: the Page Transition Effect settings currently don't work with Acrobat Reader for Mac OS X. They do work in full-screen mode for Acrobat Reader for Mac OS 9.

Use differential font encodings not base encoding: This causes PStill to emit full font encoding vectors rather than using a reference base encoding vector. This is necessary for some PDF post-processing software, in particular, the software used by the [NSF FastLane](#) site.



PStill Preferences: PDF – 3

Prefer installed fonts over document fonts: PStill’s default is to prefer fonts embedded in the document. However, if you combine several documents that use different fonts with the same name (for example, there are many different versions of Helvetica–Narrow), PStill will embed the version used in the last document processed. To avoid this and make sure that your preferred version is embedded, install the preferred version in PStill (see Font Management), and check this checkbox.

Use PDF Page Size and ignore BBOX of EPS: Check this if you want .eps documents to convert to PDF documents with the page size set in Preferences. You must have a page size selected and not “Take From Job” which overrides this option. Otherwise, by default, PStill will always take the size of the image from the job for EPS files.

PStill Preferences: Hidden

These are preferences that don't have a user interface. To set them, enter the commands in Terminal.app:

By default, PStill automatically detects Landscape orientation. To turn this off:

```
%%defaults write com.stone.PStill NoAutoDetectRotate YES
```

By default, PStill automatically detects size from DSC (comments). To turn this off:

```
%%defaults write com.stone.PStill OmitDSCCheck YES
```

If you want only grayscale images:

```
%%defaults write com.stone.PStill GrayScale YES
```

If you don't want Macintosh Types and Creator information written to your pdf:

```
%%defaults write com.stone.PStill UseMacTypes NO
```

If Acrobat can't concatenate your pdf's:

```
%%defaults write com.stone.PStill AcrobatConcattable YES
```

By default, PStill will cache your fonts in /Library/Application Support/Stone/PStill/PSFonts when you choose Tools->Cache Fonts. To change this location:

```
defaults write com.stone.PStill FontCache <FULLPATH TO FOLDER TO STORE FONTS>
```

PStill Preferences: Hidden – 2

If you do not want to output TTF fonts into the PDF stream:

```
defaults write com.stone.PStill NoTTFInPDF YES
```

If you do not want to automatically convert dvips bitmap fonts to type 1 fonts:

```
defaults write com.stone.PStill  
NoDVIPSAutoConvertBitmapFonts YES
```

If you do not want automatic rewriting of OS X cups fonts

```
defaults write com.stone.PStill DoNotRewriteOSXFonts YES
```

Font Management

When you first install PStill or when you install new fonts on your system, you need to update the information available to PStill for conversion. The Font Manager window shows you the fonts available, and lets you access the updating functionality.

To **bring up the Font Manager window**, choose **Tools->Show Font Manager** (Cmd-F).

If no fonts are installed (which will produce output that has large, ugly dots instead of text), the panel will look like this:



Font Management – 2

Click Install Fonts to have PStill to search /Network/Library/Fonts, /Library/Fonts, and your home folder ~/Library/Fonts for PostScript fonts. Valid PS fonts will be linked into the PSFonts directory inside the PStill.app/Resources folder. No extra disk space is required for this; the links are symbolic links.

Note on reinstalling or updating PStill: Because the fonts are linked to a directory inside of the PStill.app directory, reinstalling or installing a new version of PStill will require installing fonts again.

If you're using PStill version 2.5 or greater, you can avoid reinstalling your fonts by caching the font information from the old version and then restoring the cache in the new version of PStill.

1. Before you delete or replace your current version of PStill, choose **Tools->Cache Fonts**. This will write the font information out to /Library/Application Support/Stone/PStill/PSFonts.

2. After you install the new version of PStill, choose **Tools->Restore Fonts**. This will read in the font information stored in /Library/Application Support/Stone/PStill/PSFonts.

If you want to change the location used to cache your fonts, see Hidden Preferences.

Font Management – 3

Working with TrueType fonts

Modern Macintoshes come with TrueType fonts rather than PostScript fonts, so you may find that you have no valid PostScript fonts. Stone Design has created TrueBlue, a free tool to convert TrueType fonts to PostScript fonts for use with PStill.

TrueBlue installs the converted fonts directly into the PStill application. After TrueBlue has converted the fonts, you'll need to click the Install Fonts (or Update Fonts if you've already installed some fonts into PStill) button in the Font Manager window in PStill to make the fonts appear in the Font Manager window.

Font Management – 4

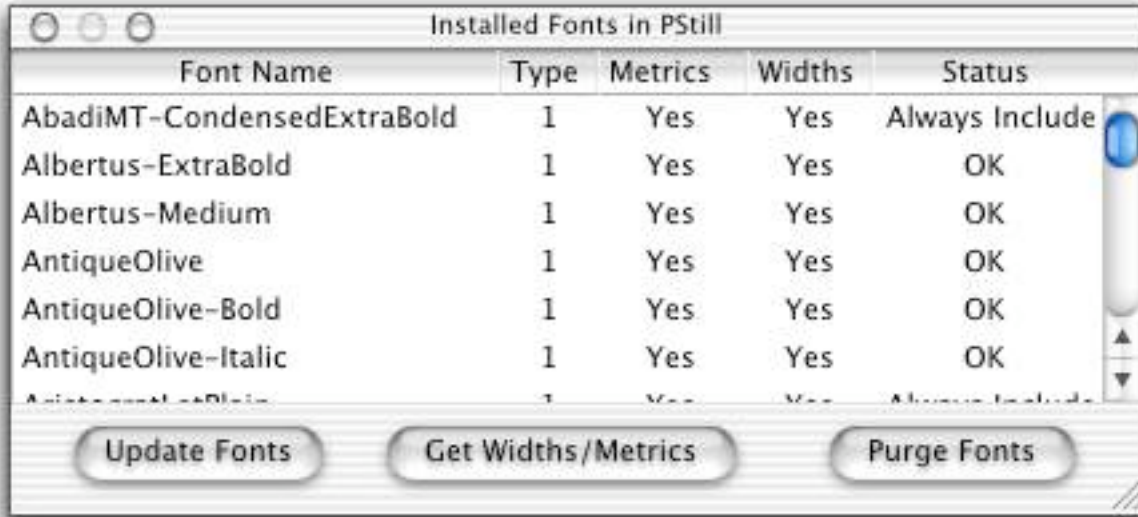
Widths and Metrics

After you install or update fonts, PStill will ask if you want to precalculate font metrics and widths.



Click OK for PStill to compile important information into `<FONTNAME>.metrics` and `<FONTNAME>.widths` files that also reside in the `PStill.app/Resources/PSFonts/` directory. This may take a few moments, but only needs to be done when you install or update fonts.

Font Management – 5



Note that now you can see if a font is Type 1 or Type 3, whether it has valid metrics and widths, and whether it will be automatically included or whether it must be converted to paths/bitmaps because it's a Type 3 font.

Font Management – 6

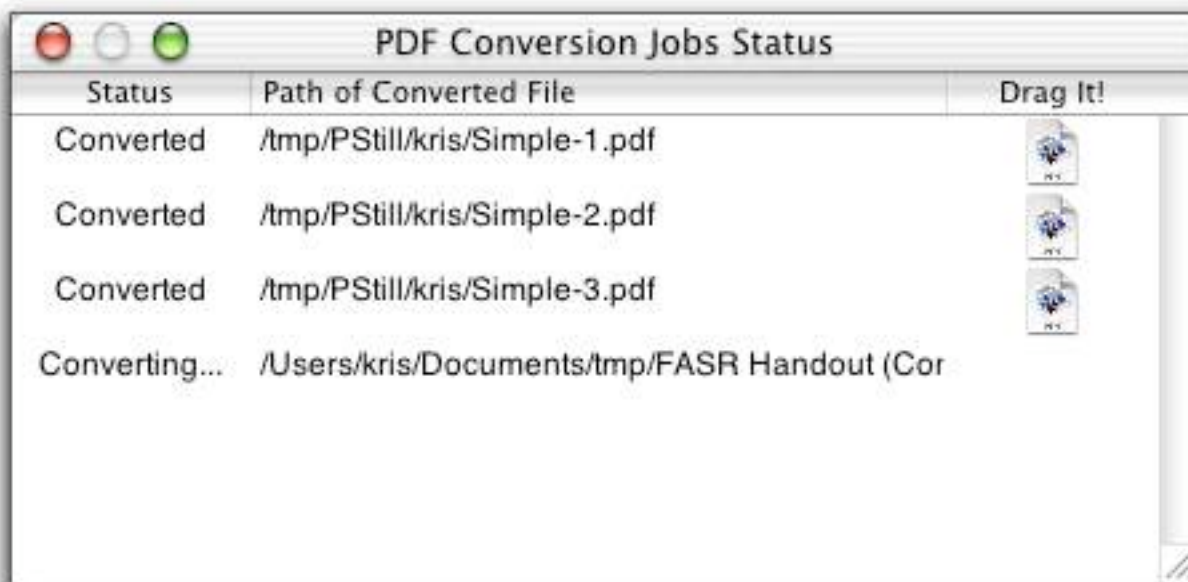
Adding Additional Fonts

To add a new font, drop the font into the table view of the Font Manager window. PStill will link the font and calculate its widths and metrics. This is useful when you have custom fonts that are not in the standard font folder locations.

To **reinstall your fonts**, click Purge Fonts in the Font Manager window. This will delete all the files in the PStill.app/Resources/PSFonts folder, so you can start fresh.

Job Management

To **see the jobs performed by PStill** since it was launched, open the Jobs Status window (**Tools->Show Jobs** (Cmd-J)). Every successful job is recorded as an entry in the Jobs Status window, and every converted file is accessible via the icon on the right side.



To **copy a converted PDF file** to another location, drag the icon to a folder in the Finder.

Job Management: Halting Jobs

Halting

To **halt a job**, select **Conversion->Stop Job** (Cmd-K). If you want to stop all the jobs in the Job Queue (for example when you drop on a handful of files), choose **Conversion->Stop All Jobs** (Shift-Cmd-K). You are prompted to make sure you want to stop the job, and then the job will exit gracefully, and be removed from the Jobs Status window. Use the Command Key Equivalent for faster job halting.

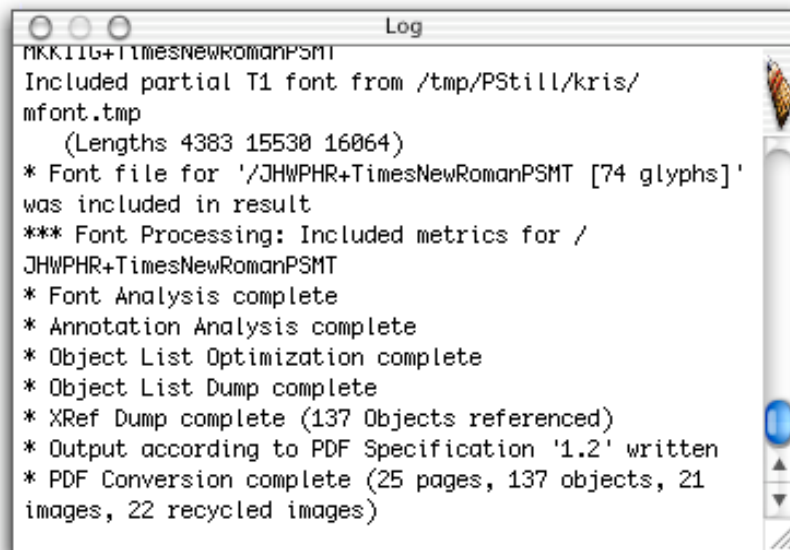
Job Management: Logs

The Log window displays what PStill is doing in the PDF conversion. To get more information, check the **Log all messages** switch in Preferences (**PStill->Preferences->Misc tab**). The log information can help in troubleshooting conversion problems.

To **bring up the Log window**, choose **Tools->Show Log (Cmd-L)**.

Due to a bug in multi-threading in the Application Kit, you won't see the Progress indicator when the Log window is up, and it won't scroll down to the bottom. Hopefully that will get fixed in a future release!

Click on the Broom icon at the top of the vertical scroller to clear out the contents of the Log window.

A screenshot of a window titled "Log" with a standard Mac OS X title bar (red, yellow, green buttons). The window contains a list of log messages in a monospaced font. On the right side of the window, there is a vertical scrollbar with a broom icon at the top, indicating a clear function. The log text includes file paths, font file names, and completion status for various processing steps.

```
MKK11G+TimesNewRomanPSMT
Included partial T1 font from /tmp/PStill/kris/
mfont.tmp
  (Lengths 4383 15530 16064)
* Font file for '/JHWPHR+TimesNewRomanPSMT [74 glyphs]'
was included in result
*** Font Processing: Included metrics for /
JHWPHR+TimesNewRomanPSMT
* Font Analysis complete
* Annotation Analysis complete
* Object List Optimization complete
* Object List Dump complete
* XRef Dump complete (137 Objects referenced)
* Output according to PDF Specification '1.2' written
* PDF Conversion complete (25 pages, 137 objects, 21
images, 22 recycled images)
```

View EPS in any Application

To use and view EPS files in other Cocoa-based Mac OS X applications, install PStill's EPS to PDF Filter.

When you install this filter, other applications can call PStill to translate EPS and other conforming PostScript files into viewable PDF when you drop the files into the application.

PStill's EPS to PDF Filter

Installation Instructions:

1. If you don't have a Stone Design CD, download and unpack software from <http://www.stone.com/NewDownload.html>
2. In the Extras Folder, you'll see a "Services" folder. Copy this folder to your Library folder. If you want all users on your computer to have access to this, then place it into /Library, the Library that all users can have access to.
3. Log out and then log in to register the service the first time.

How to Use Instructions:

In any Cocoa-based application running on Mac OS X that accepts drag and drop graphics files, drop in an EPS file. This will launch the filter service which launches PStill to do the file translation. A PDF image will be placed in your document.

Technical Support

1. Ordering Licenses

You can order PStill licenses directly from inside PStill by choosing **PStill->Purchase...** This will point your browser at our secure web server at the Stone Design Store.

You can fax us PO's at: **(USA) 505 - 345 - 3424**

You can send us cheques and money orders to:
Stone Design Corp
PO Box 6799
Albuquerque, NM 87107-6799
USA

You can just give us a call at **(USA) 505 - 345 - 4800**
You can send email to us at [**orders@stone.com**](mailto:orders@stone.com)

2. Support

Contact Stone Design via [**bugs@stone.com**](mailto:bugs@stone.com) for fast email support. The easiest way to do this is simply choose Help->Suggestion... and enter your problem or suggestion and send it to us via EMAIL - this panel will accept dragged files so feel free to document your support request.

Alternatively, use one of the other forms of contact above including our feedback page on our web site.

Please do not bother Frank Siegert; he supports the entire WINTEL/LINUX world and will only refer you to Stone Design!

Technical Support – 2

3. Legal

PDF Conversion Engine:

Copyright 1997–2003 Frank M. Siegert

Macintosh OS X User Interface:

Copyright 1999–2003 Andrew C. Stone

Bits and Pieces:

Stone Design acknowledges the copyrights of other parties, in particular 'Adrian Aylward' for the base of the PostScript interpreter, 'Hans-J. Boehm, Alan J. Demers, Xerox Corporation and Silicon Graphics' for the Garbage Collector, 'I. Lee Hetherington' for the t1utils, 'Jean-Loup Gailly and Mark Adler' for the zlib compression library and 'Adobe Systems, Inc.' for the PDF operators in parts of the source code of PStill.

Disclaimer: Stone Design disclaims all warranties with regard to this software and technology to the extent possible by federal law, including all implied warranties of merchantability and fitness, in no event shall Stone Design be liable for any special, indirect or consequential damages or any damages whatsoever resulting from loss of use, data or profits, whether in an action of contract, negligence or other tortious action, arising out of or in connection with the use or performance of this software.

Developer's API

Developers can write simple code to convert EPS and PS files to PDF using the PStill engine. Here's how:

1. Include the following Protocol as a .h file:

```
#import <Foundation/Foundation.h>

#define PStillFilterServer ([NSString
 stringWithFormat:@"PStillFilterServer-%@", [[NSProcessInfo
 processInfo] hostname]])

@protocol PStillVended

// 0 = success anything else = failure
// caller's responsibility to make sure outputFile is
writeable and not existing!
- (int)convertFile:(NSString *)inputFile toPDFFile:(NSString
 *)outputFile deleteInput:(BOOL)deleteInput;

// you can also convert many files to one single PDF with this
one:
- (int)convertFiles:(NSArray *)fullPathsToFiles
toPDFFile:(NSString *)outputFile
deleteInput:(BOOL)deleteInput;
```

Developer's API – 2

Protocol, cont.

```
// when licensing is done, this will return YES, otherwise
NO
- (BOOL)applicationReadyForInput;

// for jobs to show a preview from a thread
- (void) showImageFile:(NSString *)file width:(int)width
height:(int)height isEPS:(BOOL)isEPS
rotation:(int)rotation pageNumber:(int)pageNumber;

@end
```

2. Call the Engine

This is sample calling code which checks to be sure PStill is launched, the licensing is finished and it's ready to go. If the conversion is successful, "0" is returned:

```
#import <AppKit/AppKit.h>
#import <Foundation/Foundation.h>
#import <stdio.h>
#import <mach/mach.h>
#import <servers/bootstrap.h>
#include <unistd.h>

#import "PStillVendedProtocol.h"
```

Developer's API – 3

Call the Engine, cont.

```
#define USAGE NSLog(@"This Print Filter requires PStill for
Mac OS X by Stone Design and Frank Siegert. Visit
www.stone.com to download and full information.")

#define WAKE_UP_WAIT 5

static id<PStillVended> lookupPStillDOServer(void) {
    port_t sendMachPort;
    NSDistantObject *rootProxy = nil;
    id<PStillVended> result;

    // First, try look up PStill's DO object in the bootstrap server.
    // This is where the app registers it by default.
    if ((BOOTSTRAP_SUCCESS ==
bootstrap_look_up(bootstrap_port, (char
*)([PStillFilterServer cString]), &sendMachPort)) &&
(PORT_NULL != sendMachPort)) {
        NSConnection *conn = [NSConnection
connectionWithReceivePort:[NSPort port] sendPort:[NSMachPort
portWithMachPort:sendMachPort]];
        rootProxy = [conn rootProxy];
    }

    // If the previous call failed, the following might succeed if the user
    // logged in is running Terminal with the PublicDOServices user default
    // set.
```

Developer's API – 4

Call the Engine, cont.

```
    if (!rootProxy) {
        rootProxy = [NSConnection
rootProxyForConnectionWithRegisteredName:PStillFilterServer
host:@""];
    }

    // We could also try to launch PStill at this point, using
    // the NSWorkspace protocol.
    if (!rootProxy) {
        if (![NSWorkspace sharedWorkspace]
launchApplication:@"PStill"]) {
            USAGE;
            return nil;
        }
        sleep(WAKE_UP_WAIT);
        rootProxy = [NSConnection
rootProxyForConnectionWithRegisteredName:PStillFilterServer
host:@""];
    }

    if (!rootProxy) {
        fprintf(stderr, "Can't connect to PStill\n");
        return nil;
    }

    [rootProxy setProtocolForProxy:@protocol(PStillVended)];
    result = (id<PStillVended>)rootProxy;
    return result;
}
```

Developer's API – 5

Call the Engine, cont.

```
(BOOL)convertFile(NSString *inputFile) {
    NSString *outputFile;

    id<PStillVended> theProxy = lookupPStillDOServer();
    // if we can't find it, bail:
    if (theProxy != nil) {
        // if she's not launched, we'll wait until she's licensed
        or they give up on licensing:
        while(![theProxy applicationReadyForInput])
            [NSThread sleepUntilDate:[NSDate
            dateWithTimeIntervalSinceNow:0.1]];

        outputFile = nextTempUnique([[inputFile
        lastPathComponent]stringByDeletingPathExtension]);

        if ([theProxy convertFile:inputFile toPDFFile:outputFile
        deleteInput:NO] == 0) {
            return YES;
        } else NSLog(@"Couldn't convert %@",inputFile);
        } else NSLog(@"Couldn't connect to PStill");
        return NO;
    }
}
```

NOTE: Obviously, you must have a licensed version of PStill for this to work! If you just want to test PStill in demo mode, remove the "while (![theProxy applicationReadyForInput]) statement.