

NeXTeZine

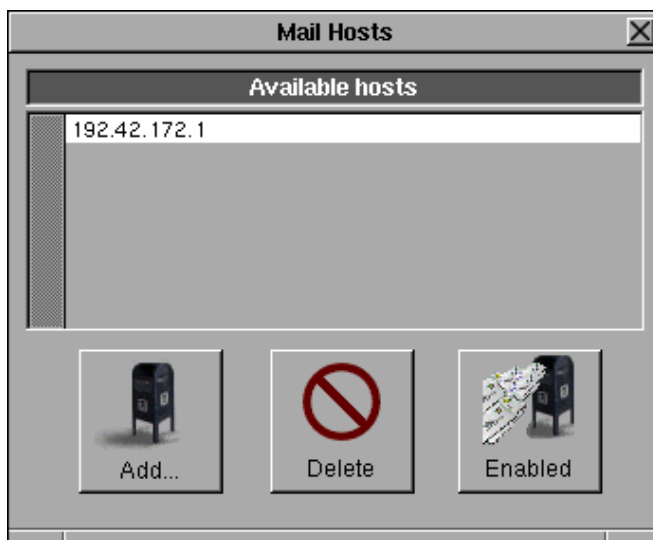
<http://nextezine.z80.org>

December 2002

PopOver and Microsoft Exchange

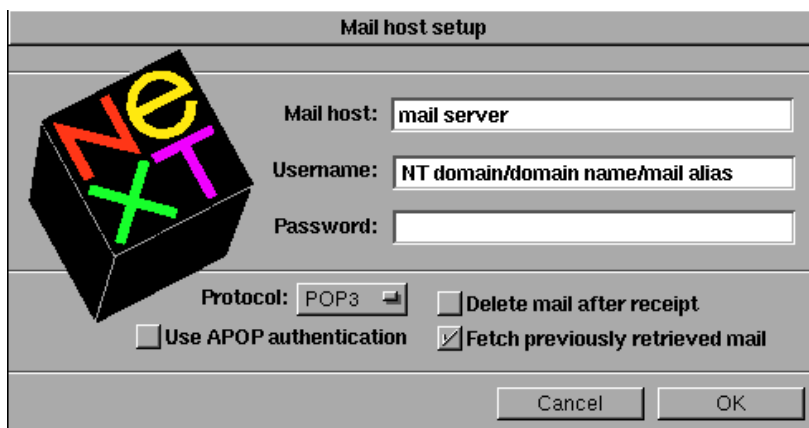
The following paper describes how to configure PopOver on your NEXTSTEP/OPENSTEP machine to retrieve mails from a Microsoft Exchange Server on your local network using pop3.

I assume you already downloaded and installed the latest version of PopOver¹ on your computer, right? Now start PopOver and add your Exchange Server as a new host (Mail hosts..).



You could either use the IP address of your mail server or the name, which requires a DNS entry using the Host Manager.

Of course, you also have to enter your login name and your password. The login entry is a bit tricky in a NT domain, but after several tries I figured out how it works.



As username enter the following:

¹The latest build for NEXTSTEP is 1.6 and 2.0 for OPENSTEP.

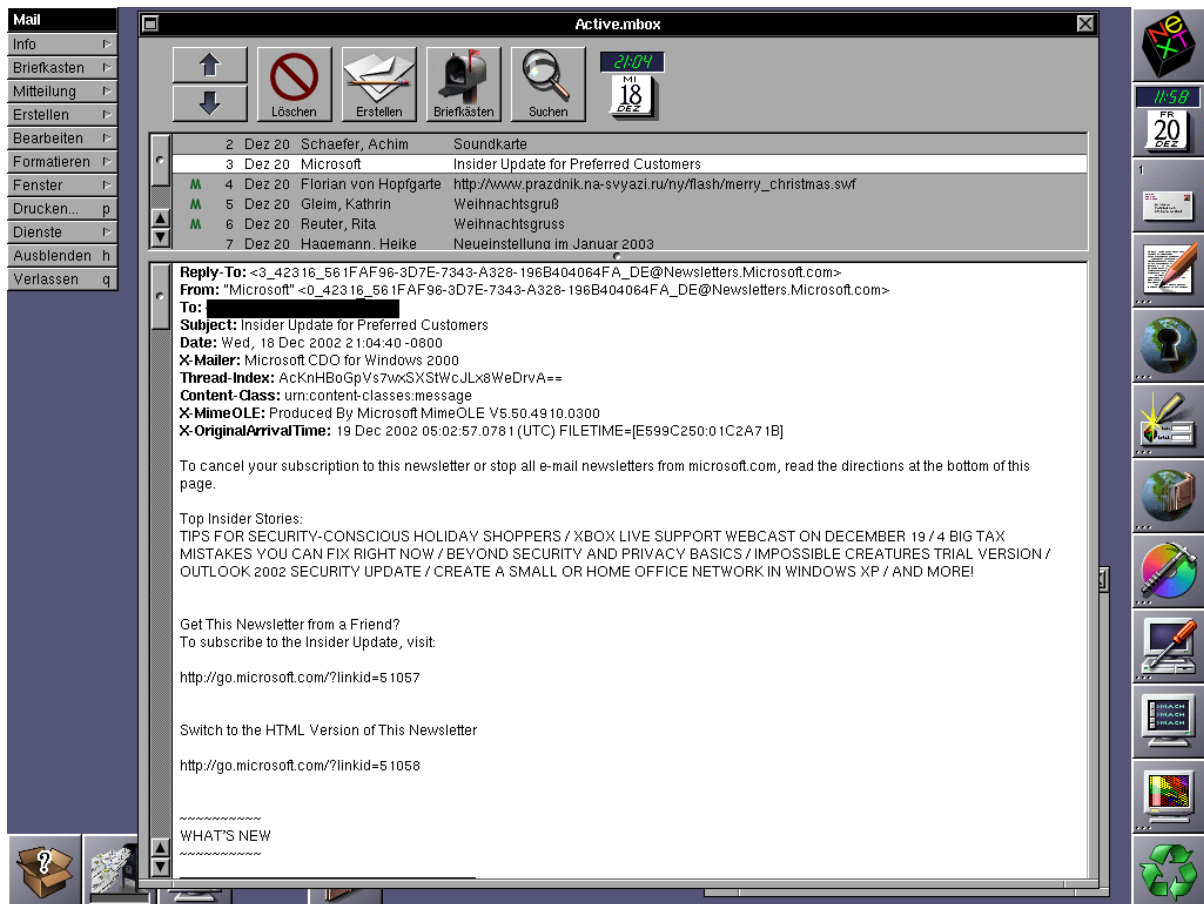
NeXTeZine

<http://nextezine.z80.org>

December 2002

NT domain name\NT user name\mail alias
(e.g. NETWORK\Schmidt.M\Markus Schmidt).
The password is your domain password.

After that you should be able to retrieve mails from your Exchange server on your NEXSTEP /OPENSTEP machine.



One restriction is, that PopOver is not able to detect any folders of your exchange account except of your inbox folder.