
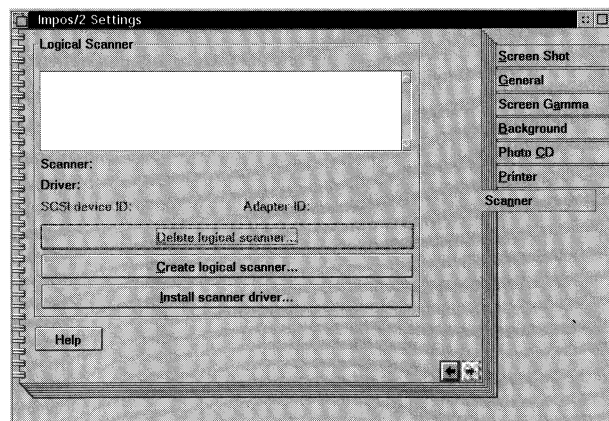
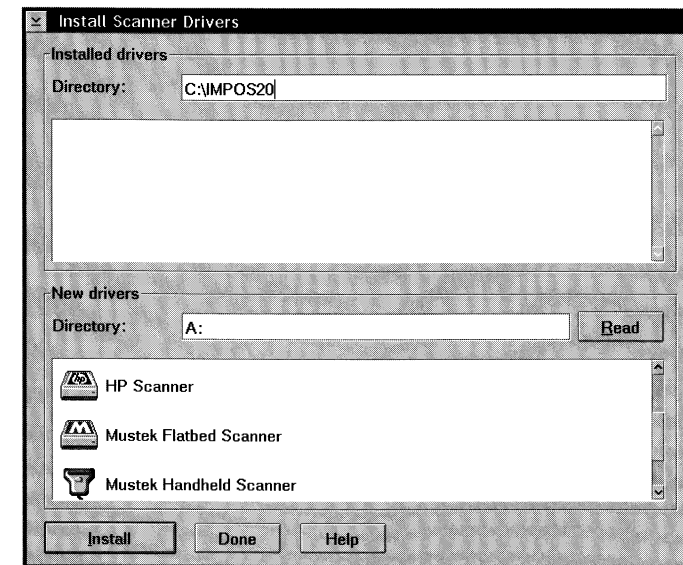


The Scanner Installation Step by Step

1. Start Impos/2.
2. Open the notebook (in the “Settings” dialog of the frame context menu) and select chapter “Scanners”, or click on the  icon in the main menu.

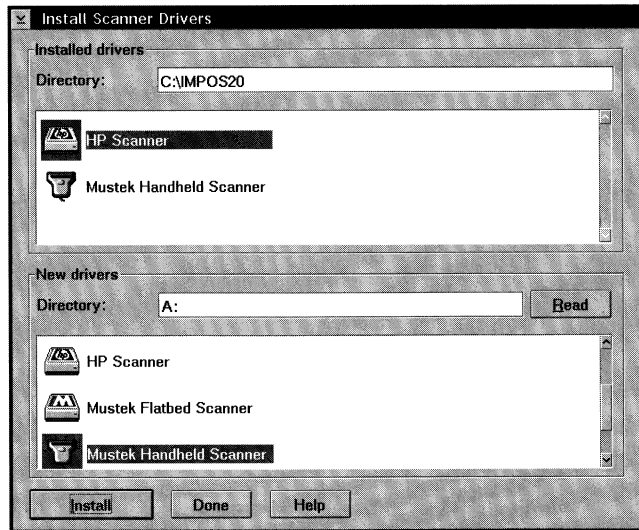


3. Click on the “Install scanner driver...” pushbutton.
4. The first group of the “Install scanner Drivers” shows which drivers are already installed in which directories. If no driver has been installed yet, this group is empty. Specify the target directory for the new driver in the entry field of the first group (e.g. C:\IMPOS20).

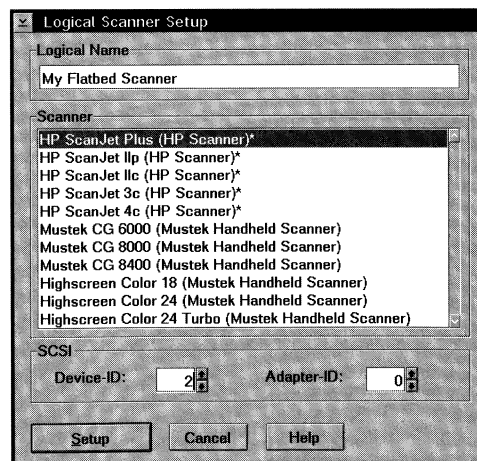


In the input field of the second group you can specify the drive and the directory where the scanner drivers are stored which you want to install (e.g. A:\). Insert the Impos/2 scanner driver diskette in drive A: and click on “Read”. After a short interval, the second group lists all drivers available for installation.

5. Select the family for the scanner to be installed. Click on the “Install” button. The selected scanner driver is copied into the target directory you specified earlier. Your CONFIG.SYS is modified accordingly. To install support for several scanner families you follow the same steps. When you have installed the required scanner families, click on the “Done” pushbutton.



6. The last step is to set up the attached scanners. To do this, click on the "Create logical scanner" pushbutton.



In the "Logical Scanner Setup" dialog, enter a unique logical name for the attached scanner and select the appropriate scanner model from the list.

SCSI Scanners

For SCSI devices you set the device ID in the "SCSI" group according the actual scanner ID. Then you specify the ID of the adapter where the scanner is attached (in most cases, this will be 0). Note: Before you can use SCSI scanners you must load the base device drivers (e.g. AHA154X.ADD for ADAPTEC) plus the general ASPI driver OS2ASPI.DMD with the CONFIG.SYS. These drivers are shipped with OS/2. If SCSI support has not yet been loaded you must customize your system. Open the "Selective install" dialog in the OS/2 folder "System configuration" to install the drivers.

Non-SCSI Scanners

The shipped OS/2 drivers for non-SCSI devices are parametrized like their DOS equivalents. The Impos/2 installation program uses the default values for DMA channel, IRQ and I/O address as recommended by the manufacturers. If conflicting address values occur, simply change the default values according to the specifications for the appropriate DOS driver. Clicking on the "Setup" pushbutton completes the scanner installation and setup. Repeat these steps if you use more than one attached scanner.

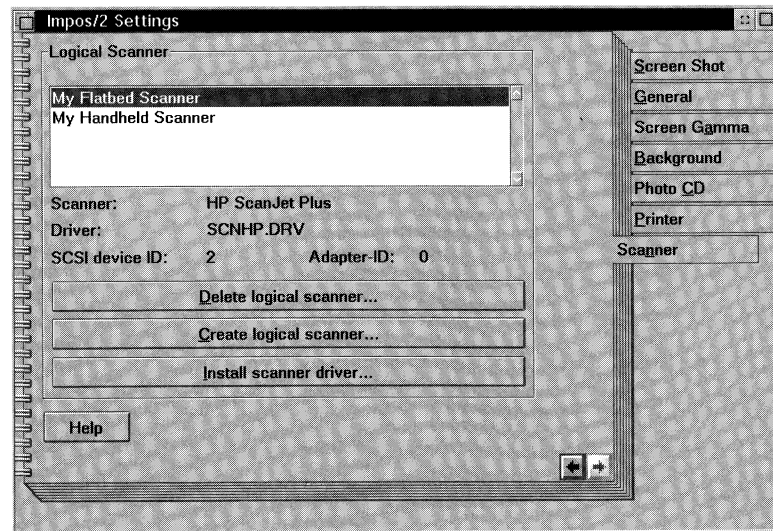
Scanning with Impos/2

When the scanner is installed and set up, you start the scanning process by clicking on the appropriate scanner icon in the Impos/2 main menu.

A “Scan window” is displayed where you control the process. (See user manual page 41 “The Frame Context Menu in Detail, Open - Scan window”).

With several scanners attached to the system you must decide which scanner is to be used when the scan window is opened with the scanner symbol in the Impos/2 main menu.

Select “Settings - Scanner” in the frame context menu.



The “Logical Scanner” list contains all installed and set up scanners. By selecting one of these scanners you determine which one will be addressed when you “Open - Scan window”.

It is possible to have several “Open - Scan window” icons in the Impos/2 menu (see chapter “Configuring the Menu Bar - Adding icons” in the manual).

To define which scanner is addressed by which icon, click with the right mouse button on the appropriate icon and select “Settings” from the menu.

This selection opens a dialog window in which you connect icons and scanners. The “command” field shows the REXX function call “ImgShowScanWindow()”. You can modify this command by adding the name of a previously specified logical scanner as a parameter ; e.g.

ImgShowScanWindow(“My flatbed-scanner”).

Now, when you click on this icon the scanner with the logical name “My flatbed-scanner” will be addressed even though several scanners may be attached.

Before you begin...

Use the provided INSTALL.EXE to install Impos/2 on your PC's fixed disk.

It asks you to specify the directory in which you want to install the product and which components you want. Then the INSTALL.EXE decompresses and copies the Impos/2 program files from the installation diskettes to the fixed disk.

If you want to install scanner support, you will also need hardware-specific drivers. All required drivers are shipped with Impos/2. The scanners supported are integrated via OS/2 drivers. You *no longer* need the DOS drivers supplied by scanner manufacturers that were used in previous Impos/2 versions.

If you have an old Impos/2 version installed or if you are an experienced PC user omit the following sections and continue with "Fast Facts".

System requirements

Impos/2 is a 32-bit program. It requires IBM OS/2 version 2.x or higher. Otherwise, there are no special hardware or software requirements. However, please bear in mind that the processing speed for OS/2 programs depends largely on the available memory

(RAM). Also note that a gray scale image of 1,024 x 768 dots needs approx. 0.8 MB.

We recommend a memory of at least 8 MB.

Impos/2 processes black and white, gray scale and color images with up to 16 million colors (true color) in any resolution. The display quality with regard to color depth and resolution as well the image building speeds also depend on the graphics adapter used. High quality (true color) images can be displayed in normal VGA mode with 16 colors but they look different and unnatural. Read the chapter on configuration possibilities in your graphics adapter manual and use the OS/2 utility DSPINSTL.EXE to check whether the graphics adapter configuration is set to optimum values.

More recent VGA adapters can be installed with default OS/2 drivers in the so-called SVGA mode with 256 colors and a resolution of up to 1,024 x 768 dots. If you want higher speeds for image building you need a graphics adapter with its own graphics processor (e.g. with S3 chip set). Before you buy such an adapter make sure that the required OS/2 drivers are available also.

Depending on the components installed, Impos/2 needs approx.

1 - 2 MB disk space, plus the storage space occupied by the stored images. Check the capacity of the fixed disk before you install the product.

Impos/2 Components

With a view to easy maintenance, upgradability and configuration flexibility, Impos/2 consists of modules. It is made up of so-called dynamic link libraries, that is one main and two optional components. Using the installation program you select which product you wish to install. This means you choose only the components you really want to work with, thus avoiding filling up disk space unnecessarily. Each component has its own task:

- The **base component** (main component) contains only those program objects that are absolutely necessary for the program flow. This component allows image import by acquisition or capturing from screen or clipboard only.
- The **image format component** contains special modules for importing or exporting image files in various formats (e.g. TIF, PCX, bitmap etc.).
- The **scanner component** contains drivers and supporting program objects needed when hand-held or flatbed scanners are used under Impos/2. In previous Impos/2 versions, scanner support was set up with the installation procedure. Now scanner support is established from within Impos/2. This modification lets you add or remove scanner components at any time.

You can also install the sample images shipped on the Impos/2 diskettes. Using them, you can start working with Impos/2 immediately after installing the program even though you may not yet have your own images to process.

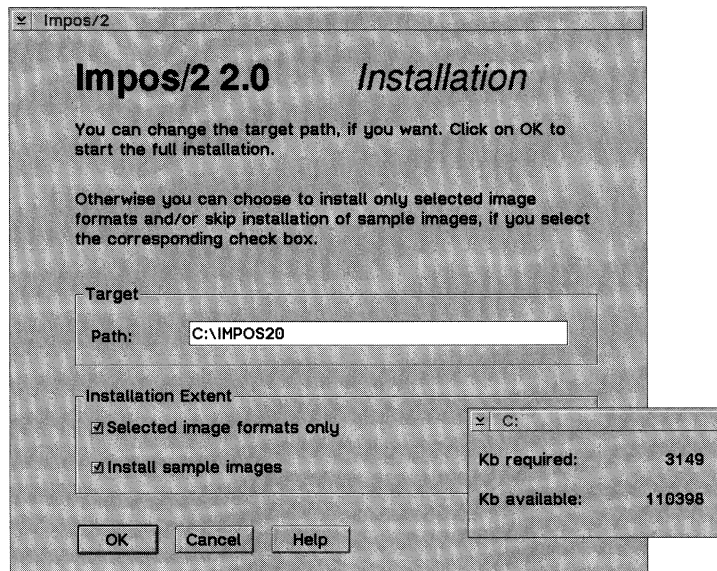
The default installation process installs the base component as well as the image format components and its modules plus the sample images.

The Steps of the Installation

1. Insert the installation diskette in drive A: and open an OS/2 window. To start the installation program enter
A:\INSTALL <Enter>
at the OS/2 prompt. After a short loading time the main window of the installation program is displayed (see next page). The recommended target directory, C:\IMPOS20, is already displayed, but you can specify another directory.

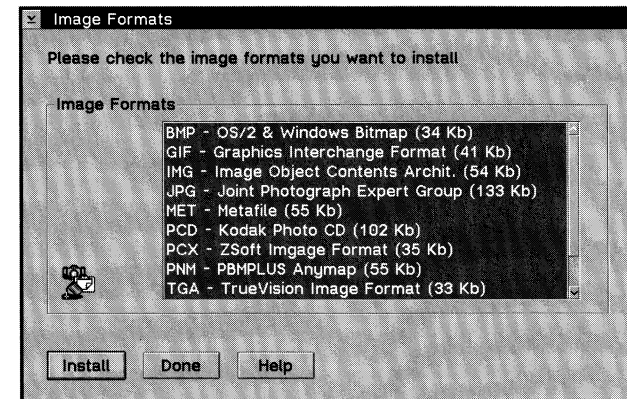
If there is an Impos/2 version installed in the default directory and you do not change the installation target, already existing program objects with *the same name* may be overwritten.

Note: The installation program does not delete other existing files in this directory!



2. The “Installation Extent” group is pre-set to include all image formats and sample images. This means that the base and image format components including all image format modules and sample images will be installed. If you do not want to install the sample images, deselect the checkbox “Install sample images” and click on the “OK” pushbutton.

- a) If you want to install a limited selection of the image formats mark the checkbox “Selected image formats only” and click on the “OK” pushbutton.
- b) The “Image Formats” window shows optionally installable image formats. By default, all formats are selected and therefore part of



the pre-defined installation extent. If you want to exclude a format from the installation, simply select it, thus removing the selection.

Click on the “Install” pushbutton to start the installation. If you click on the “Done” pushbutton you return to the main installation window.

3. The installation progress is indicated by a progress bar. The folder “Impos/2” is created on the workplace shell when all file objects are copied. It contains three additional objects.
 - Program-object “Impos/2” starts Impos/2.
 - Object “Impos REXX Reference” opens the online REXX reference with a description of the Impos/2 REXX interface.
 - Folder “Images” contains the sample images (provided they were loaded during the installation).

Any existing image file objects that can be processed with Impos/2 are linked to Impos/2. When an error occurs during installation, a message is displayed. Click on the “Help” pushbutton to see an explanation and information on how to solve the problem.

4. A message is displayed if the installation was successful. Confirm it and then end the installation program by clicking the “End” pushbutton. Impos/2 is now installed.

Fast Facts

1. Start the INSTALL.EXE on the installation diskette.
2. Change the default target directory, if necessary. If there is an Impos/2 version already installed in the target directory and you do not change the installation target, already existing program objects with *the same name* may be overwritten. Note: The installation program does not delete other files existing in this directory!
3. If you want to install the default selection of Impos/2 including image formats and sample images, start the installation process by clicking on “OK”. If not, open the “Image Formats” dialog by marking the “Selected image formats only” checkbox.

Then click on “OK” and choose from the listed image formats.

4. The installation was successful if the appropriate message is displayed. Now exit the installation program.

The Scanner Installation

In previous Impos/2 versions, the scanner support was installed with the installation program. This is no longer the case. Now you use the Impos/2 main menu. This means that you can add or delete scanner support outside the Impos/2 installation process.

For scanner support you will need hardware specific drivers. They are used for the communication between Impos/2 and the attached devices. The device drivers are part of the Impos/2 shipment and will be set up during the installation process.

You need to reboot your system after installing a new scanner driver.

Impos/2

Installation Instructions