



**From
any
angle,
the
best
on
the
market...**

NAME: HARVEY P. RASTER TITLE: MR. PRG.
 COMPANY: FINANCIAL INFO. CORP. *****
 ADDRESS: 85-35 FOURTEENTH STREET
 CITY: SEATTLE STATE: WASHINGTON ZIP CODE: 98109
 PHONE: 345-234-5678

ACCOUNT NUMBER: 123-45-6789
 BILLING HISTORY-----
 LAST PAYMENT: AMOUNT: \$100.00 DATE: 09/23/79
 PAYMENT DUE: AMOUNT: \$100.00 DATE: 11/24/79
 CREDIT RATING: NEAR PERFECT

THE FORM ABOVE IS REPRESENTATIVE OF ANOTHER OF MANY FEATURES INCORPORATED IN THE HAZELTINE 2000.
 SPLIT SCREEN . . . THE HAZELTINE 2000 UTILIZES TWO-TONE LIGHT INTENSITY IN A UNIQUE AND POWERFUL MANNER. THE BRIGHTER TONE IS ASSIGNED TO FOREGROUND; THE OTHER IS ASSIGNED TO BACKGROUND. BACKGROUND DATA IS COMPUTER DERIVED AND PROTECTED; IF DESIRED, I.E., CANNOT BE MODIFIED BY THE KEYBOARD OPERATOR, OR TRANSMISSION FROM THE DISPLAY. ONLY FOREGROUND DATA IS SENT, RESULTING IN MORE EFFECTIVE USE OF COMMUNICATION LINES, COMPUTERS AND STORAGE DEVICES.

Hazeltine
2000

1,998 character display (27 lines of 74 characters each) on a 12-inch screen.
A true stand-alone unit—includes communications interface and modular power supply,

Inside Story of the Video Display Terminal that leaves all the others behind.



Switch-selectable full- or half-duplex operating modes.
Selectable transmission rates—110, 150, 300, 600 or 1200 baud. Adjustable up to 9600 bps.

Powerful editing capability—12 distinct keyboard operations, including line and character insert/delete. 10 functions under computer control, including cursor positioning by X-Y coordinates.



NAME: HARVEY P. RASTER
 COMPANY: FINANCIAL INFO. CORP.
 ADDRESS: 22-35 FOURTEENTH STREET
 CITY: SEATTLE STATE: WASHINGTON ZIP CODE: 99999
 PHONE: 345-234-5678

ACCOUNT NUMBER: 120-30-3069

BILLING HISTORY-----

LAST PAYMENT: AMOUNT: \$120.32 DATE: 09/23/70

PAYMENT DUE: AMOUNT: \$160.27 DATE: 11/24/70

CREDIT RATING: NEAR PERFECT

THE FORM ABOVE IS REPRESENTATIVE OF ANOTHER OF THE MANY FEATURES INCORPORATED IN THE HAZELTINE 2000.

SPLIT SCREEN . . . THE HAZELTINE 2000 UTILIZES TWO-TONE LIGHT INTENSITY IN A UNIQUE AND POWERFUL MANNER. THE BRIGHTER TONE IS ASSIGNED TO FOREGROUND; THE OTHER IS ASSIGNED TO BACKGROUND. BACKGROUND DATA IS COMPUTER DERIVED AND PROTECTED, IF DESIRED, I.E., CANNOT BE MODIFIED BY THE KEYBOARD OPERATOR. ON TRANSMISSION FROM THE DISPLAY, ONLY FOREGROUND DATA IS SENT, RESULTING IN MORE EFFECTIVE USE OF COMMUNICATION LINES, COMPUTERS AND STORAGE DEVICES.

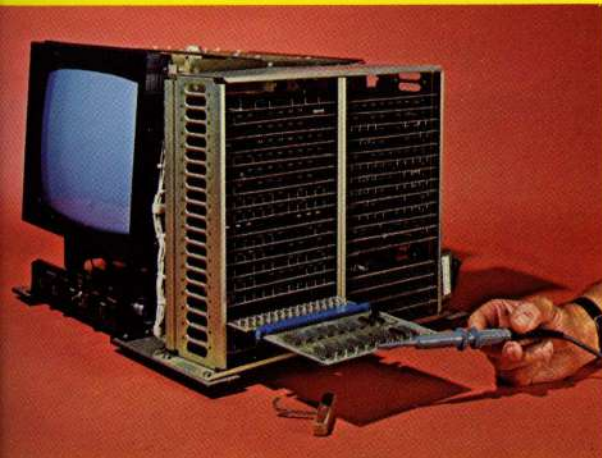
Two-level video intensity. Useful for form fillout. Computer-derived protected data is lower intensity; operator-entered data is brighter.
Selective scrolling at any line when under program control; automatically at line 1, unless otherwise directed.
Automatic tabulation in form fillout directs cursor to next entry point.



3 remote monitors may be connected without amplifiers. With amplifiers added, the number is unlimited.



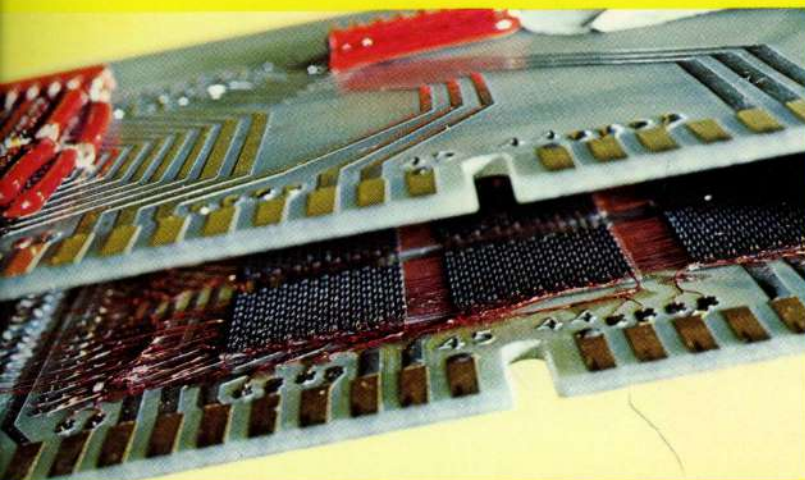
Individual TV adjustments conveniently located up front for optimum operator comfort.



Reliable solid-state circuitry assures virtual trouble-free operation. Maintenance is as easy as opening a drawer.



Quiet, solid-state keyboard in Teletype terminal format may be operated remotely.



High-speed, random-access core memory (2048 x 8) provides flexibility and efficiency consistent with all the unique design features of the Hazeltine 2000.

Plus: Low Cost!

**\$88 per month (12-month rental)
 plus \$20 maintenance.**

We'll be happy to demonstrate the Hazeltine 2000 in your offices.

Hazeltine 2000

Hazeltine Corporation

Little Neck, N.Y. 11362 Phone (212) 423-4800

Now double-check everything just to be sure...

Technical Data

Memory Type	2048 x 8 magnetic core.
Operating Modes	Half or full duplex (by switch).
Character Structure	5 X 7 dot matrix, using standard 525 line TV raster.
Character Repertoire	64 alpha-numerics and symbols. 32 ASCII control codes.
Screen Character Capacity	1998 characters. 74 characters per line. 27 lines per display.
Editing Features	Thirteen distinct editing operations from the keyboard, including character and line insert/delete. Eight distinct editing operations under computer control.
Split Screen	Two level video intensity is utilized to distinguish computer derived and protected data from unprotected data, which can be modified by the keyboard operator.
Cursor Addressability	Program may direct the cursor to any character position on the screen.
Status Lights	Five status lights are provided to indicate the operational state of the system.
Refresh Rate	60 fields per second.
Keyboard	Solid state, no mechanical contacts. Teletype design, + 10 key numerics.
Standard Interface (EIA RS-232B)	Acoustic coupler or TTY33-ASR.
Transmission Rates	110, 150, 300, 600, 1200 baud, switchable. (Note: Also adjustable below 110 baud and easily set for rates to and beyond 9600 bps.)
Power	350 Watts. 117 VAC, 60 hz. single phase. Supply fully fused.
Circuit Protected	Integral overvoltage protection and short circuit current limiting with automatic shutdown.
Screen Size	12" diagonal.
Accessories	Magnetic Tape Cassette. Hard Copy. Remote Monitors.
Weight	73 lbs.
Dimensions	Depth—22". (with keyboard removed—16"). Width—18½". Height—12½".

Then call us for a demonstration.

Hazeltine 2000

Little Neck, N.Y. 11362
(212) 423-4800