

SPRINT MICRO 3 REMOVAL AND REPLACEMENT PROCEDURES

The following procedures are to be used as a guide by the field or depot service technician when removing printer sub-assemblies for service or replacement. These procedures are written for Qume's standard Sprint Micro 3 printers and will vary slightly for the WideTrack and TwinTrack models and also for those printers with the Dual Paper Drive option installed. All adjustments referred to can be found in the earlier portions of this section. Read all pertinent procedures thoroughly before beginning.

COVER REMOVAL

1. Refer to Illustration A. Remove the Top Cover (1) by grasping the forward corners and lifting up and toward you.
2. Pull the feed roll release lever and paper bail forward.
3. Remove the platen by releasing the latch at each end.
4. If the Cover Extension (2) is installed (e.g. covering Qume Switching Power Supply) remove the two screws (3). Complete removal of the Cover Extension requires powering down the printer and system and disconnecting both the 50 conductor data interface cable and the power cable from the printer.
5. To remove the Intermediate Cover (6), remove screws (4). There are five on the Receive Only Intermediate Cover and seven on the Keyboard Intermediate Cover. Screws (4) are located on the inside periphery of the cover.
6. Remove three screws (5) at the rear of the printer. Two of these will have already been removed if the Cover Extension was previously removed.
7. Disconnect any cables between the Intermediate Cover and the printer mechanism. Disconnection will be made at J4 on the motherboard or at J20 on the printer side frame depending upon which cable is in use.
8. Lift off the Intermediate Cover.
9. Remove the Bottom Cover (7) by removing the four screws (8) and the two nuts (8) inside the printer. Do not lose the two washers (10).

PRINTED CIRCUIT BOARD REMOVAL

1. Remove the Top Cover, Intermediate Cover, and Cover Extension (if installed).
2. PCB #1 is at the rear of the printer; PCB #3 is nearest the operator.
3. Remove all power to the printer and system.
4. Remove the clamp that holds down the printed circuit boards.
5. Lift out the printed circuit board(s).

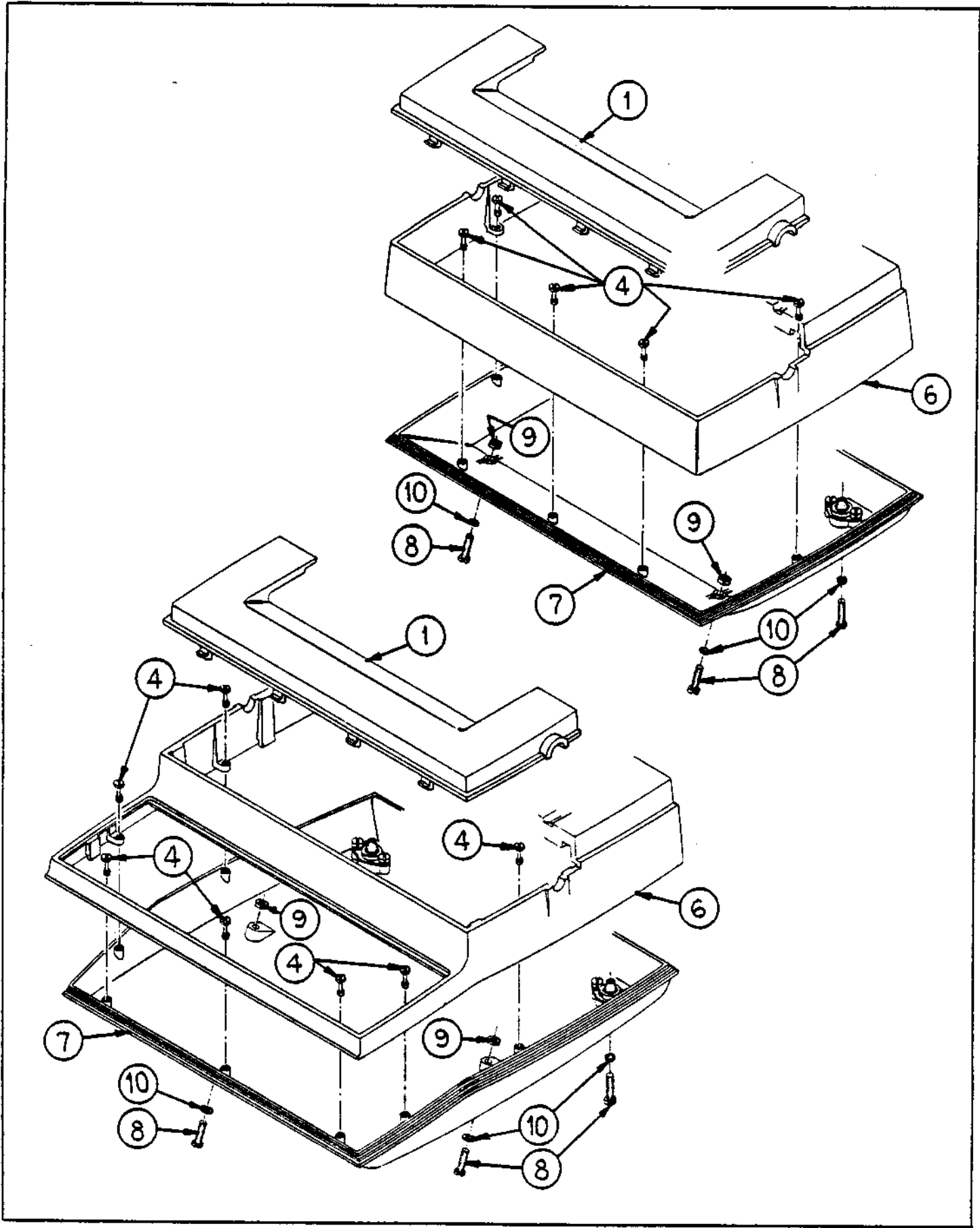


ILLUSTRATION A

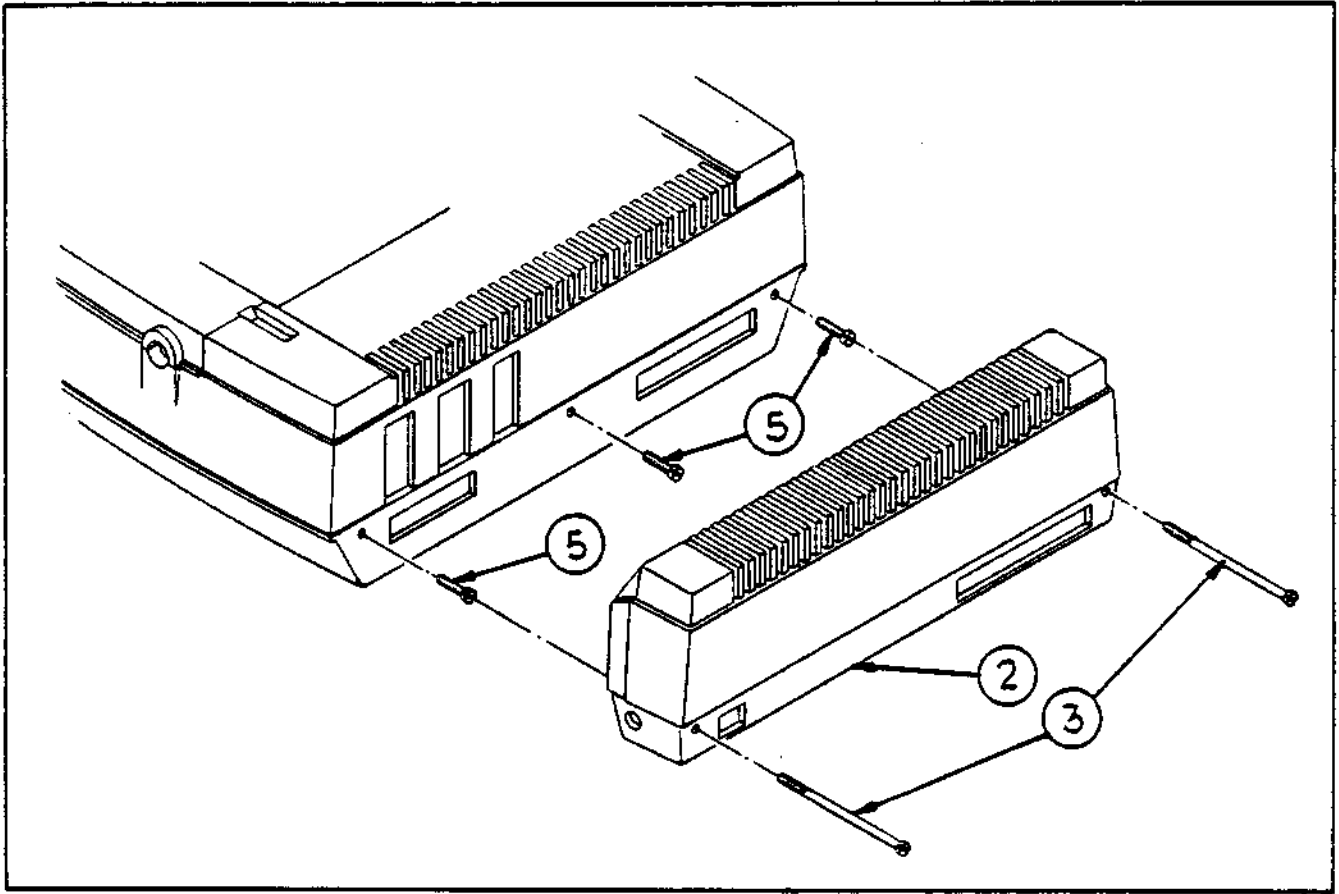


ILLUSTRATION A (Continued)

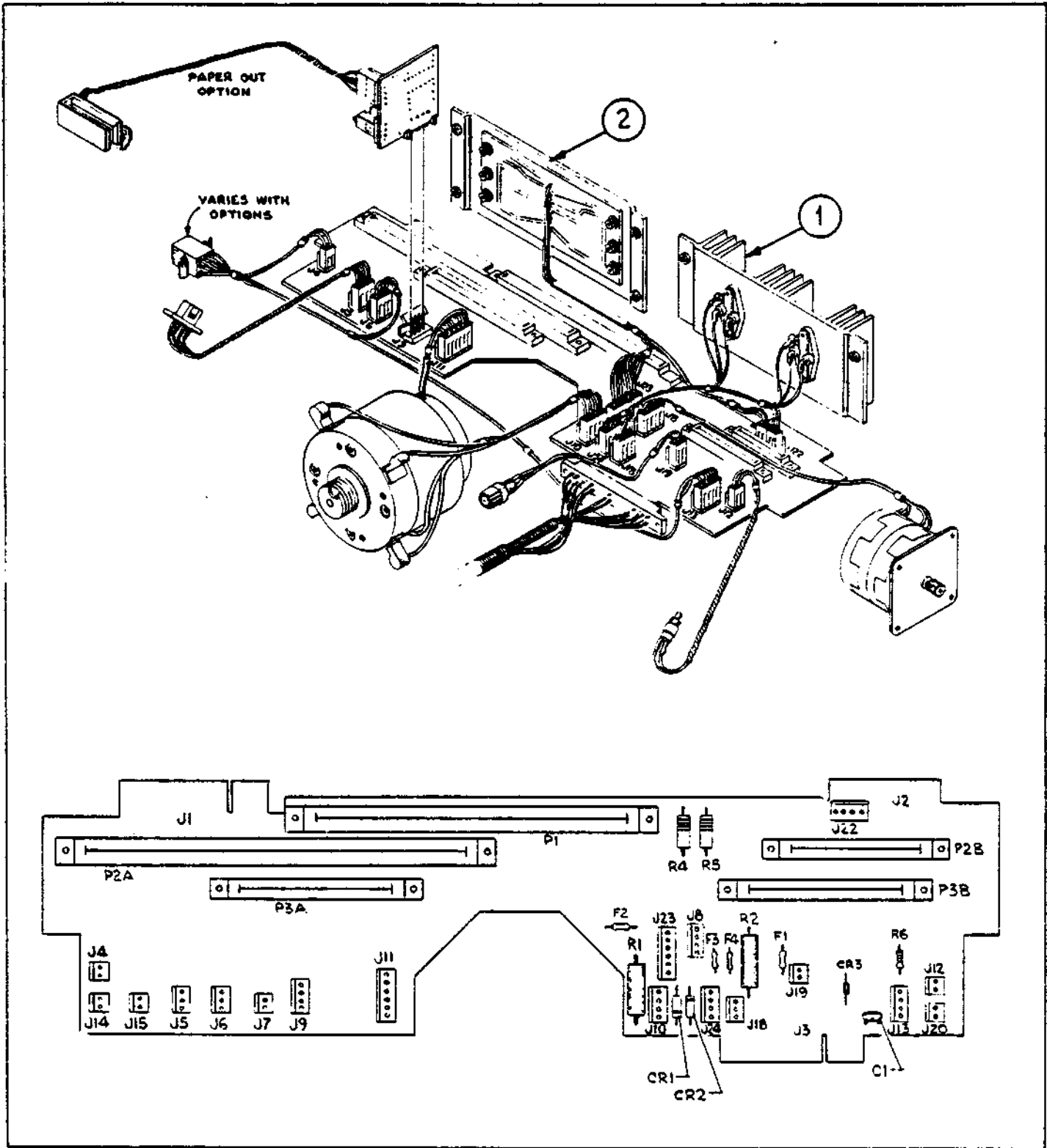


ILLUSTRATION B

MOTHERBOARD CONNECTIONS

Most connectors are mechanically "keyed" to ensure correct assembly. If you have any questions, refer to the Motherboard Schematic (90600) for cable color coding and pin number assignments.

P1	Printed Circuit Board #1
P2A, P2B	Printed Circuit Board #2
P3A, P3B	Printed Circuit Board #3

J1	Data Interface Cable
J2	Power Cable
J3	Carriage Harness Assembly
J4	Cover Interlock Switch (may be directly connected to switch on intermediate cover or may be connected to J20 on printer left side frame)
J14	Unused
J15	Unused
J5	Carriage Left Limit Detector
J6	Form Advance (TOF) Pushbutton Switch (connected to J20 on printer left side frame)
J7	Unused
J9	Paper Out Printed Circuit Board
J11	Carriage Motor Encoder Assembly
J10	Carriage Drive Motor
J23	Paper Feed Drive Transistors (mounted on left rear heat sink assembly)
J24	Carriage Drive Transistors (mounted on right rear heat sink assembly)
J18	Printwheel Drive Transistors (mounted on left rear heat sink assembly)
J19	Hammer Fire Resistor
J13	Panel Lights (connected to J20 on printer left side frame)
J12	Move Ribbon Pushbutton
J20	Unused
J8	Paper Feed Motor
J22	+15V and -15V Power to both heat sink assemblies

F1	Fuse, Printwheel Motor
F2	Fuse, Carriage Motor
F3	Fuse, Paper Feed Motor
F4	Fuse, Paper Feed Motor

HEAT SINK ASSEMBLY REMOVAL

1. Remove the Top and Intermediate Covers.
2. Remove all three printed circuit boards.
3. Refer to Illustration B. Looking from the front of the printer, the heat sink assembly on the right (1) contains the carriage drive transistors. The transistors themselves are socketed and can be replaced individually without removing the heat sink assembly.
4. Remove the carriage drive heat sink assembly by removing two screws and disconnecting the cables going to J24 and J22 on the motherboard.
5. The heat sink assembly (2) on the left (looking from the front) contains the paper feed and printwheel drive transistors. Remove it by removing four screws and disconnecting the cables going to J22, J23, and J18 on the motherboard.
6. When reinstalling either heat sink assembly, refer to Illustration B for cable placement.

MOTHERBOARD REMOVAL

1. Remove the Top and Intermediate Covers.
2. Remove all three printed circuit boards.
3. Remove both heat sink assemblies.
4. Disconnect all cables from motherboard.
5. Remove the eight screws mounting the motherboard to the printer bottom pan.
6. When reinstalling the motherboard, perform the motherboard alignment adjustment given on page 6-33.
7. Refer to Illustration B and the Motherboard Connection list when reinstalling cables on the motherboard.

PAPER FEED MOTOR REMOVAL

1. Remove the Top and Intermediate Covers.
2. Remove all three printed circuit boards.
3. Refer to Illustration C. Remove the paper feed idler gear (1) and the retaining clip (2).
4. Remove the three 8-32 hex headed screws (3), the associated washers (4), and the three spacers (5).
5. Disconnect the paper feed motor cable from the motherboard at J8. This cable may run underneath the motherboard but need not be reinstalled in the same manner as long as the routing does not interfere with any printer mechanism or removing and replacing the printed circuit boards.
6. Remove the paper feed motor (6) from the printer.
7. After reinstalling the paper feed motor, adjust the paper feed idler gear for proper gear mesh with the paper feed motor pinion gear and the platen drive gear (see Platen Drive Gear Adjustment, page 6-25).

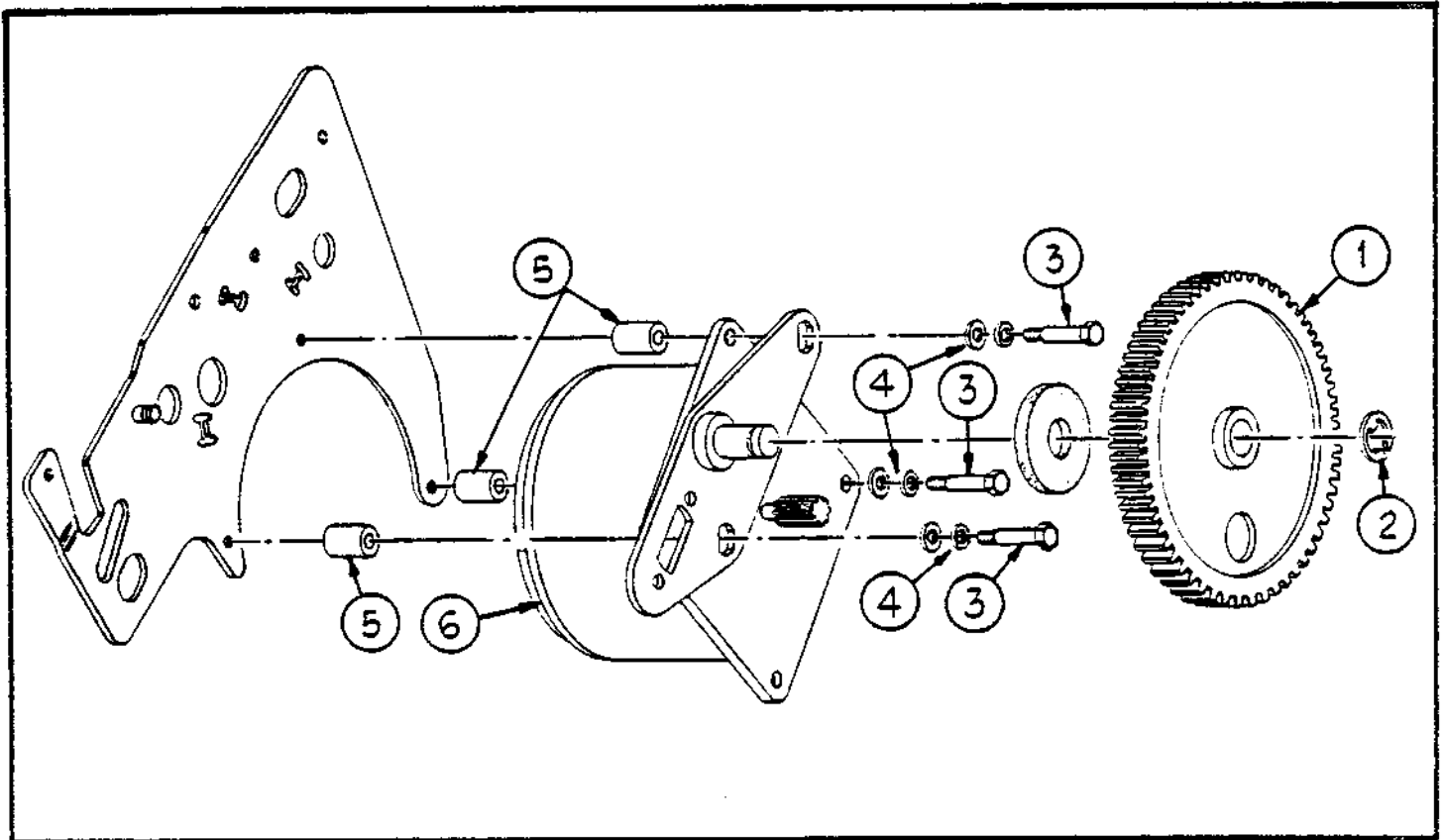


ILLUSTRATION C

CARRIAGE DRIVE CABLE REMOVAL

1. Remove the Top and Intermediate Covers.
2. Remove the ribbon cartridge.
3. Remove the printwheel.
4. Refer to Illustration D. With the top carriage assembly tilted back, grasp the square swaged end (1) of one of the carriage drive cables with long nose pliers. Use a 3/16" wrench or nut driver and, while holding cable from twisting, back off the 3/16" self locking nut (2) until it is holding onto the last three or four threads of the cable end.
5. While holding the square end of the other carriage drive cable (1), remove the 3/16" self locking nut (2). Remove the 3/16" self locking nut loosened in step 4.
6. Both carriage drive cables are connected to the carriage drive motor pulley. Balls on the ends of the cables are retained by mating holes in the pulley.
7. Remove the drive cables from around the idler pulleys on each printer side frame and unhook the cables from the motor pulley.
8. When reinstalling the cables, note that they leave the pulley from the top side. See Illustration E. It is easiest to install the left drive cable first since it connects to the drive pulley at the end nearest the motor brace.
9. Remember to hold the square cable ends with long nose pliers to keep the cables from twisting when reinstalling the 3/16" self locking nuts.
10. Adjust carriage drive cable tension (page 6-28).

CARRIAGE MOTOR ASSEMBLY REMOVAL

1. Remove Top, Intermediate, and Bottom Covers.
2. Remove all printed circuit boards.
3. Remove both heat sink assemblies.
4. Remove motherboard.
5. Remove carriage drive cables.
6. Refer to Illustration E. Using a 5/16" wrench, socket and ratchet, or nut driver, remove the four 1/2" long hex headed screws (1) and the associated washers.
7. Being careful not to disturb the plastic dust cap covering the carriage motor encoder assembly, remove the carriage motor through the square opening in the printer rear frame.
8. With some carriage motors, it will be necessary to remove the four conductor cable attached to the motor before it will fit through the rear frame. One of the motor terminals is marked with a red dot and the cable is color coded. A red cable is connected to the terminal marked with a red dot; the second red cable is connected to the terminal 180° on the opposite side of the motor. Individual cable length will help obtain correct orientation and electrical connection during reinstallation.

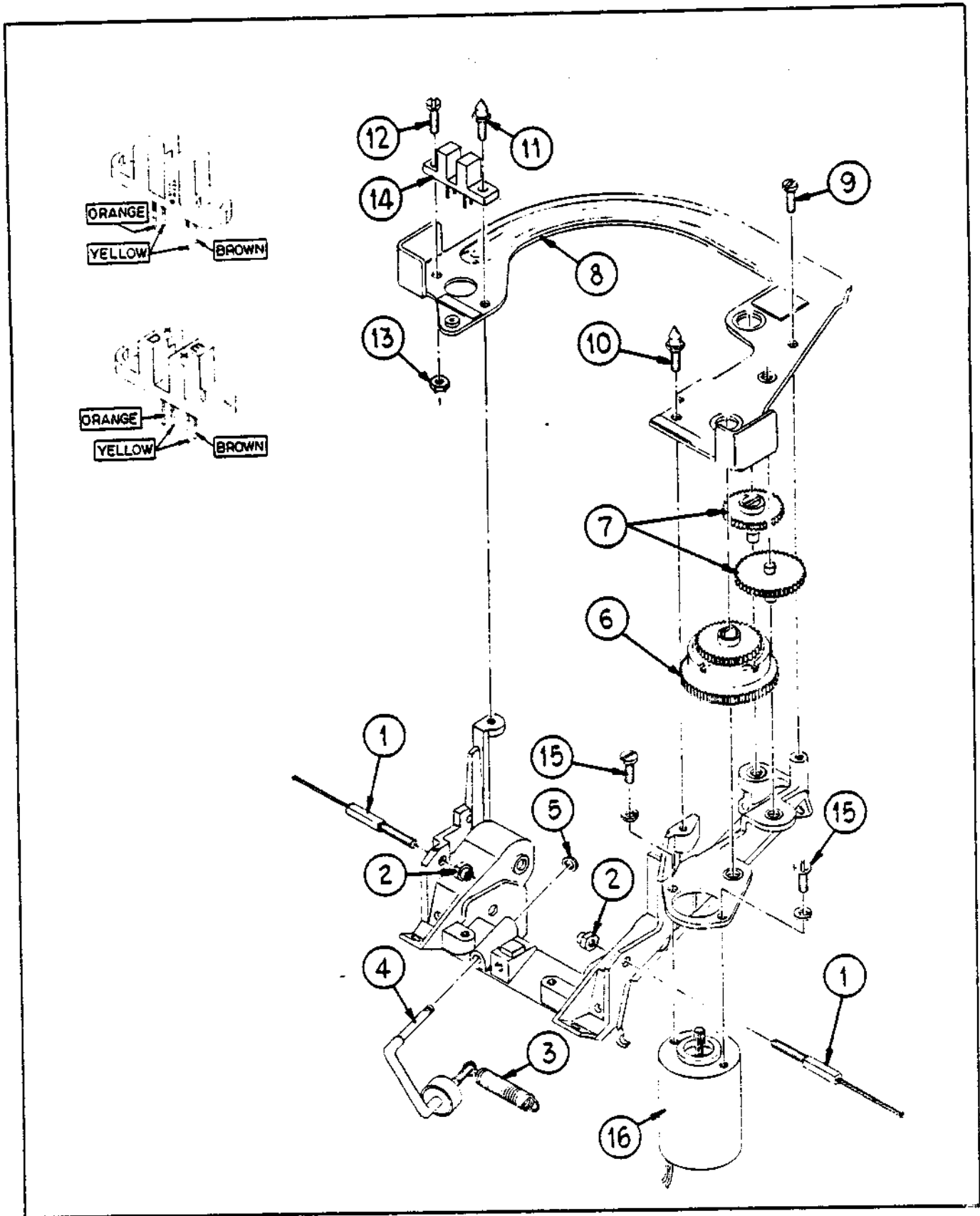


ILLUSTRATION D

CARRIAGE ASSEMBLY REMOVAL

1. Remove the Top and Intermediate Covers.
2. Remove the carriage drive cables.
3. Disconnect the carriage harness cable from the motherboard at J3.
4. Remove the cable clamp holding the carriage harness cable to the printer bottom pan.
5. Remove any other fastener holding the carriage harness cable to the printer mechanism (e.g. nylon cable tie).
6. You can remove the carriage assembly from the carriage rails by either of two methods.
 - a. Method 1 -- The carriage rails are retained in the printer side frames by grip rings and screws. Remove the grip rings and screws on the right side only and slide both rails to the left until the carriage assembly can be reached from the printer.
 - b. Method 2 -- Refer to Illustration D. Remove the two springs (3) (only one shown in Illustration D) from the carriage assembly that load the two ball bearing assemblies (4) (only one shown in Illustration D) into contact with the bottom of the carriage rails. Remove the C-clip (5) that retains the bottom rear ball bearing assembly in the carriage. Remove the bottom rear ball bearing assembly. Remove the carriage assembly from the printer.
7. After reinstalling the carriage assembly and drive cables, adjust the carriage drive cable tension and check all print quality related adjustments (page 6-28).

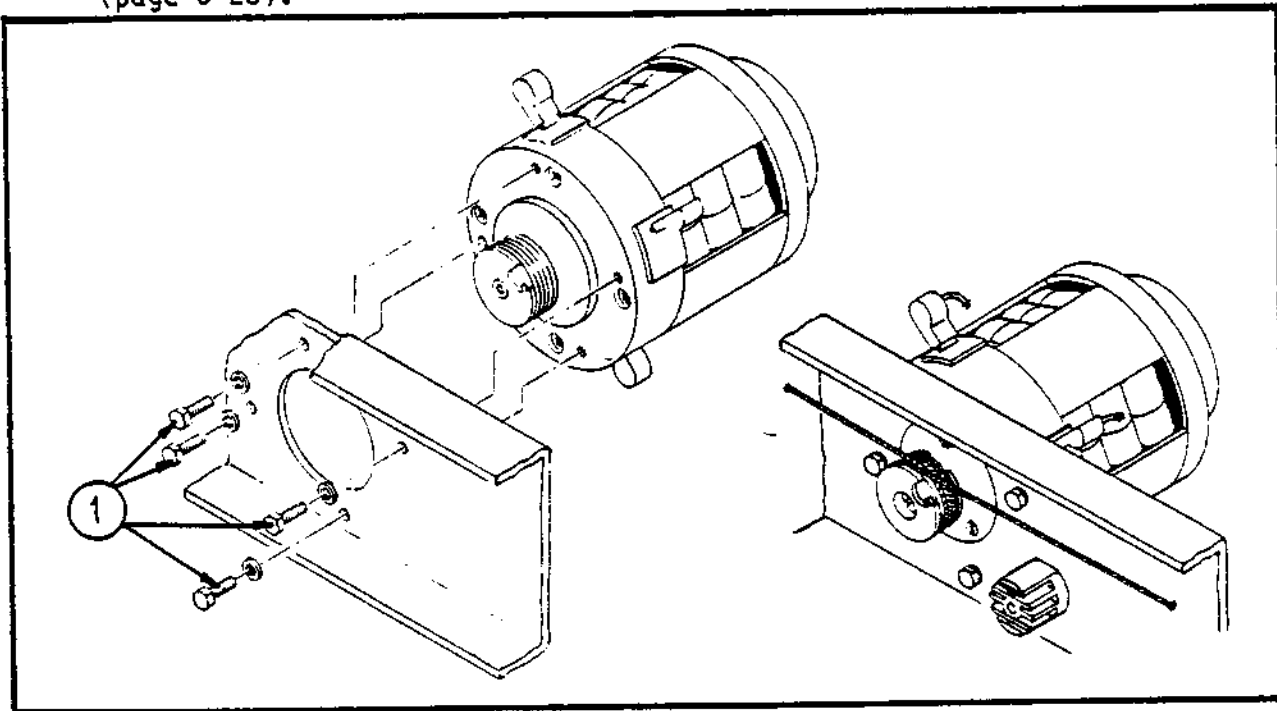


ILLUSTRATION E

RIBBON DRIVE CLUTCH AND GEAR REMOVAL

1. Remove Top Cover.
2. Remove ribbon cartridge.
3. Refer to Illustration D.
4. To remove the ribbon drive clutch (6) or the ribbon drive idler gears (7), the ribbon drive plate (8) must be removed.
5. Remove screw (9) and the two studs (10) and (11). The ribbon drive plate, ribbon drive clutch, and idler gears can now be removed.
6. After reinstalling the clutch, idler gears, and drive plate, adjust the gear mesh between the ribbon drive motor and the ribbon drive clutch.

END OF RIBBON SENSOR REMOVAL

1. Remove Top and Intermediate Covers.
2. In most cases it is advisable to remove the carriage assembly from the printer so that you will be able to perform the following steps easily and with little chance of accidentally causing additional damage.
3. Refer to Illustration D. Remove nut (13), screw (12), and stud (11).
4. The End of Ribbon Sensor (14) can be lifted up and the four wires cut as near to the sensor module pins as possible.
5. Remove any old heat shrink tubing from these four leads. Strip the insulation off the ends of these four leads for 1/4" to 1/2".
6. Slip a 1" long piece of 1/16" i.d. heat shrink tubing over each of the four leads.
7. Carefully solder the leads onto the correct pins of the new sensor module. See Illustration (D). Depending upon the vendor of the replacement sensor module, the module will either be marked with +, E, and D, or one of the pins will be marked with the white dot. Use Illustration (D) and the cable color coding to correctly install the new sensor module.
8. Slip the heat shrink tubing up to insulate the soldered connections and pins. Apply only enough heat to correctly shrink the tubing.

RIBBON LIFT COIL REMOVAL

1. Remove the Top and Intermediate Cover.
2. In most cases it is advisable to remove the carriage assembly from the printer so that you will be able to perform the following steps easily and with little chance of accidentally causing additional damage.
3. Remove the two 1/4" long pan head screws that mount the ribbon lift coil assembly to the printer upper carriage assembly.
4. Cut the two wires going to the ribbon lift coil as close to the coil as possible.
5. Strip the insulation from these two leads for 1/4".
6. Slip a 1" long piece of 1/16" i.d. heat shrink tubing onto each lead.
7. Solder these leads to the new ribbon lift coil assembly.
8. Slip the heat shrink tubing up to insulate the soldered connections. Apply only enough heat to correctly shrink the tubing.
9. After complete reinstallation, adjust the ribbon lift coil assembly for correct ribbon lift height.

PRINT HAMMER ARMATURE ASSEMBLY REMOVAL

1. Remove Top and Intermediate Covers.
2. In most cases it is advisable to remove the carriage assembly from the printer so that you will be able to perform the following steps easily and with little chance of accidentally causing additional damage.
3. Remove the three 1/4" long pan head screws that mount the hammer armature assembly to the printer upper carriage assembly.
4. To obtain enough slack in the hammer armature coil leads, it is usually necessary to cut and remove the two nylon wire ties that secure various leads exiting the carriage harness assembly to the upper carriage casting.
5. Cut the two hammer armature coil wires as close to the coil as possible.
6. Strip 1/4" of insulation from the end of each wire.
7. Slip a 1" long piece of 3/32" i.d. heat shrink tubing over each wire.
8. Solder these leads to the new hammer armature assembly.
9. Slip the heat shrink tubing up to insulate the soldered connection. Apply only enough heat to correctly shrink the tubing.

PRINT HAMMER ARMATURE ASSEMBLY REMOVAL (Continued)

10. Reinstall the hammer armature assembly onto the upper carriage assembly.
11. Install two new nylon wire ties where they were previously removed.
12. Adjust the print hammer armature assembly and the rear and front eccentric hammer armature stops.
13. Print several lines of text. If necessary, further refine print quality associated adjustments.

RIBBON DRIVE MOTOR REMOVAL

1. Remove Top and Intermediate Covers.
2. Remove carriage assembly from printer.
3. Refer to Illustration D. The four ribbon drive motor wires are protected for about 3" with plastic sleeving where they pass through the lower carriage casting. If your printer does not have the optional End of Ribbon sensor installed, the four EOR sensor wires may also be routed through this sleeving with the four unconnected ends near the ribbon drive motor.
4. Cut the four ribbon drive motor wires as close as possible to the motor.
5. Remove the two pan head screws (15) and washers that mount the ribbon drive motor to the lower carriage casting. Remove the defective ribbon drive motor (16).
6. Cut the wires on the replacement ribbon drive motor to a length of 1" to 1 1/2".
7. Strip 1/4" of insulation from the end of each of these wires and from the end of each of the ribbon drive motor wires exiting the protective sleeving.
8. Install the new ribbon drive motor on the lower carriage casting.
9. Slip a 1/4" to 1/2" long piece of 1/16" i.d. heat shrink tubing onto each ribbon drive motor wire.
10. Using the wire color coding as a guide, solder the replacement ribbon drive motor wires to the correct carriage harness cable wires.
11. Slip the heat shrink tubing over each of the soldered connections and apply only enough heat to correctly shrink the tubing.
12. Adjust ribbon drive motor to clutch gear mesh.

FRONT AND REAR FEED ROLL REMOVAL

1. Remove Top Cover.
2. Remove platen by releasing the latch at each end.
3. The paper cradle is connected to the platen brace with two small springs. Remove the springs and the paper cradle.
4. See Illustration (F). Either front feed roll can be removed by gently spreading the feed roll arms.
5. To remove the rear feed roll, you must first remove the associated front feed roll. Then pivot the rear feed roll up and forward ninety degrees.
6. Gently spread the feed roll arms and remove the rear feed roll. See Illustration (F).

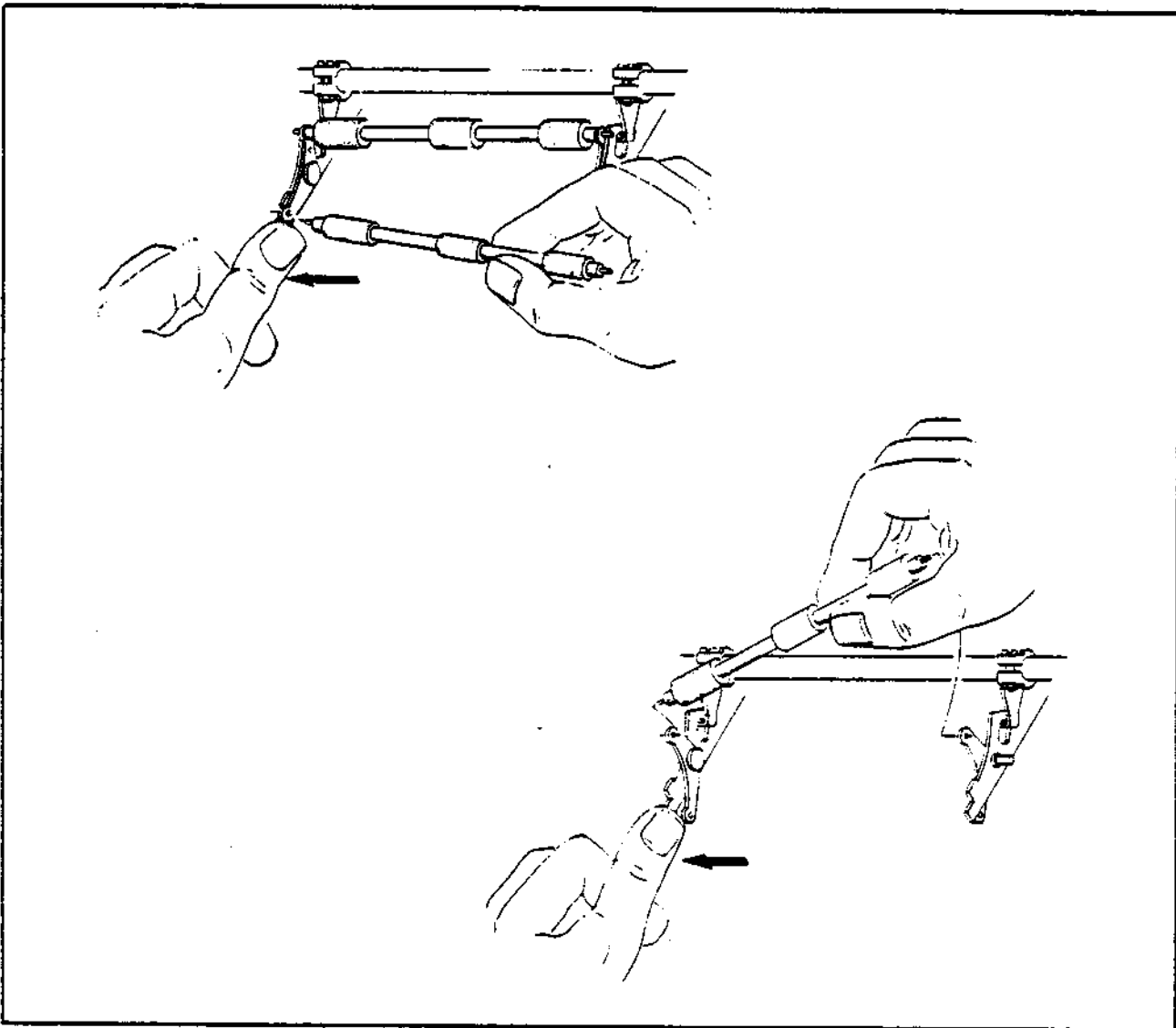


ILLUSTRATION F

CHAPTER VII

ILLUSTRATED PARTS LIST

The following pages contain illustrated parts lists for the various Sprint Micro 3 printer models. Each group is identified by the shaded portion in the overall printer drawing that is on the leading page. Where specific models require different parts, those parts are shown in separate illustrations, and sometimes identified in a separate list. These illustrated parts lists can be used as an assembly guide and to identify missing or broken parts when repairing a printer.

To order parts, visually locate the part on the drawing, then use the index number to locate the part number from the list on the accompanying page. For parts pricing, refer to Qume Catalog, Service and Spares (Qume P.N. 30030).

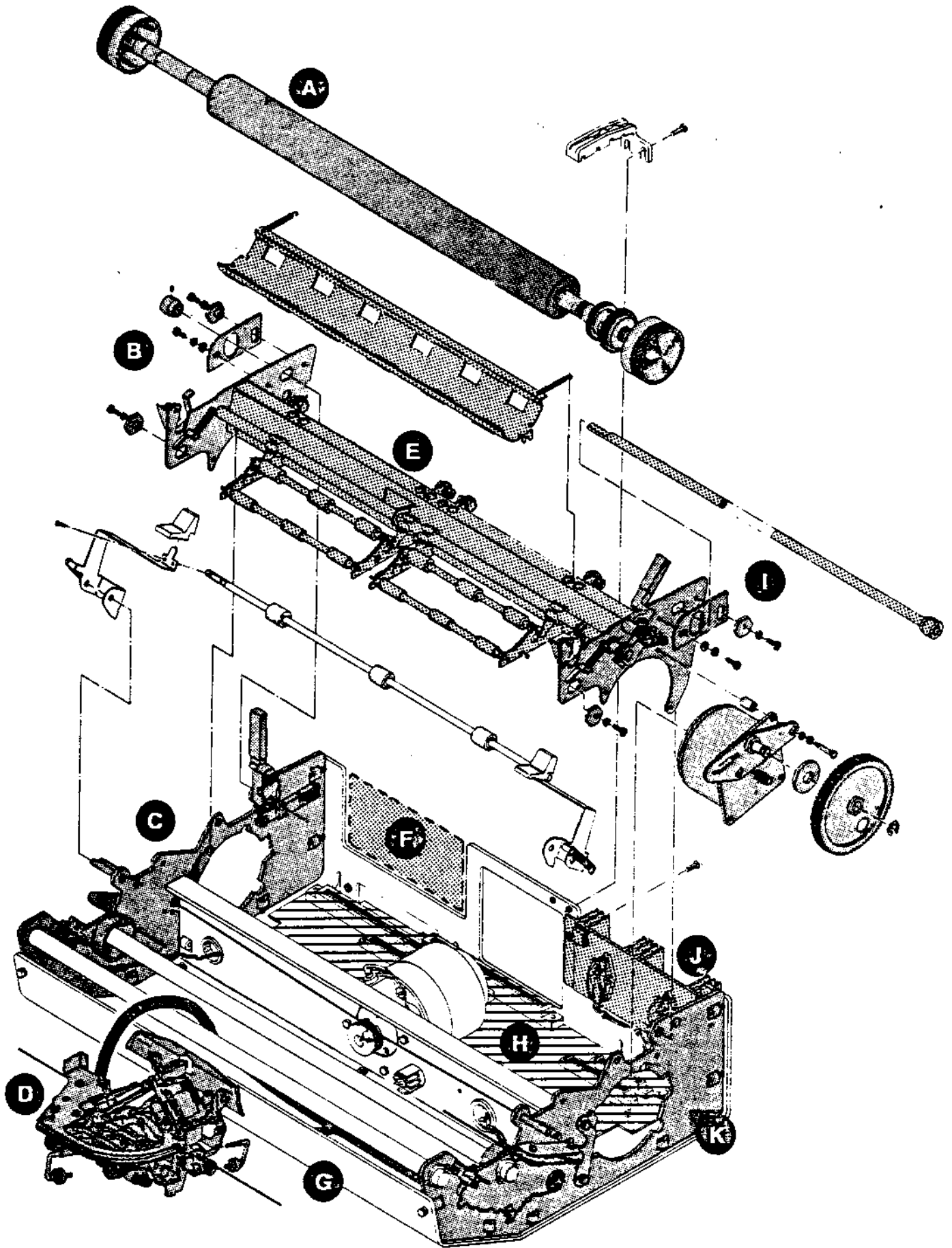
When replacing parts, refer to Section VI of this manual for alignment and adjustment procedures.

The following pages contain illustrated parts lists for the various Sprint Micro 3 printer models. Each group is identified by the shaded portion in the overall printer drawing that is on the leading page. Where specific models require different parts, those parts are shown in separate illustrations, and sometimes identified in a separate list. These illustrated parts lists can be used as an assembly guide and to identify missing or broken parts when repairing a printer.

To order parts, visually locate the part on the drawing, then use the index number to locate the part number from the list on the accompanying page. For parts pricing, refer to Qume Catalog, Service and Spares (Qume P.N. 30030).

When replacing parts, refer to Section VI of this manual for alignment and adjustment procedures.

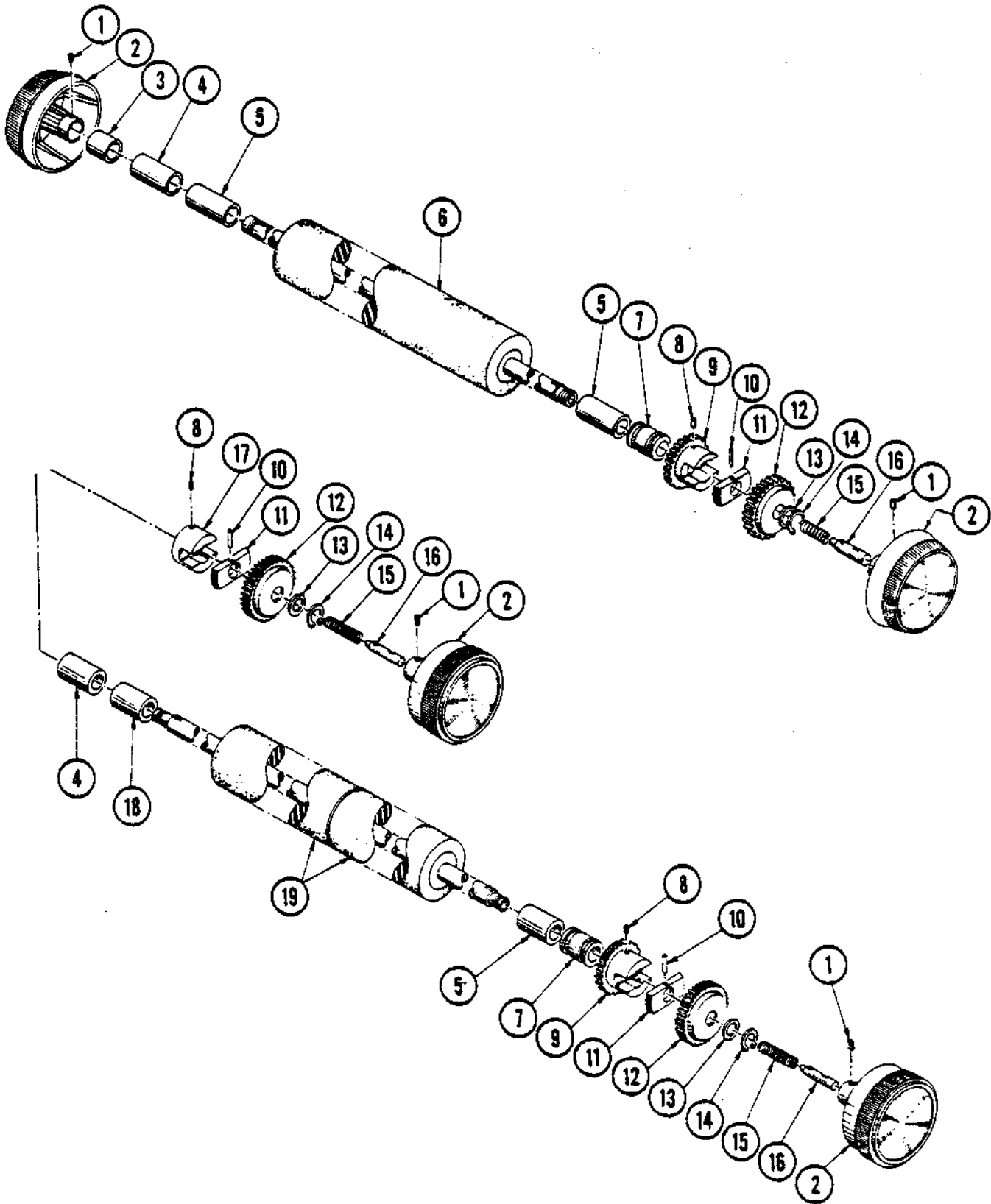
GENERAL STRUCTURE



GENERAL STRUCTURE

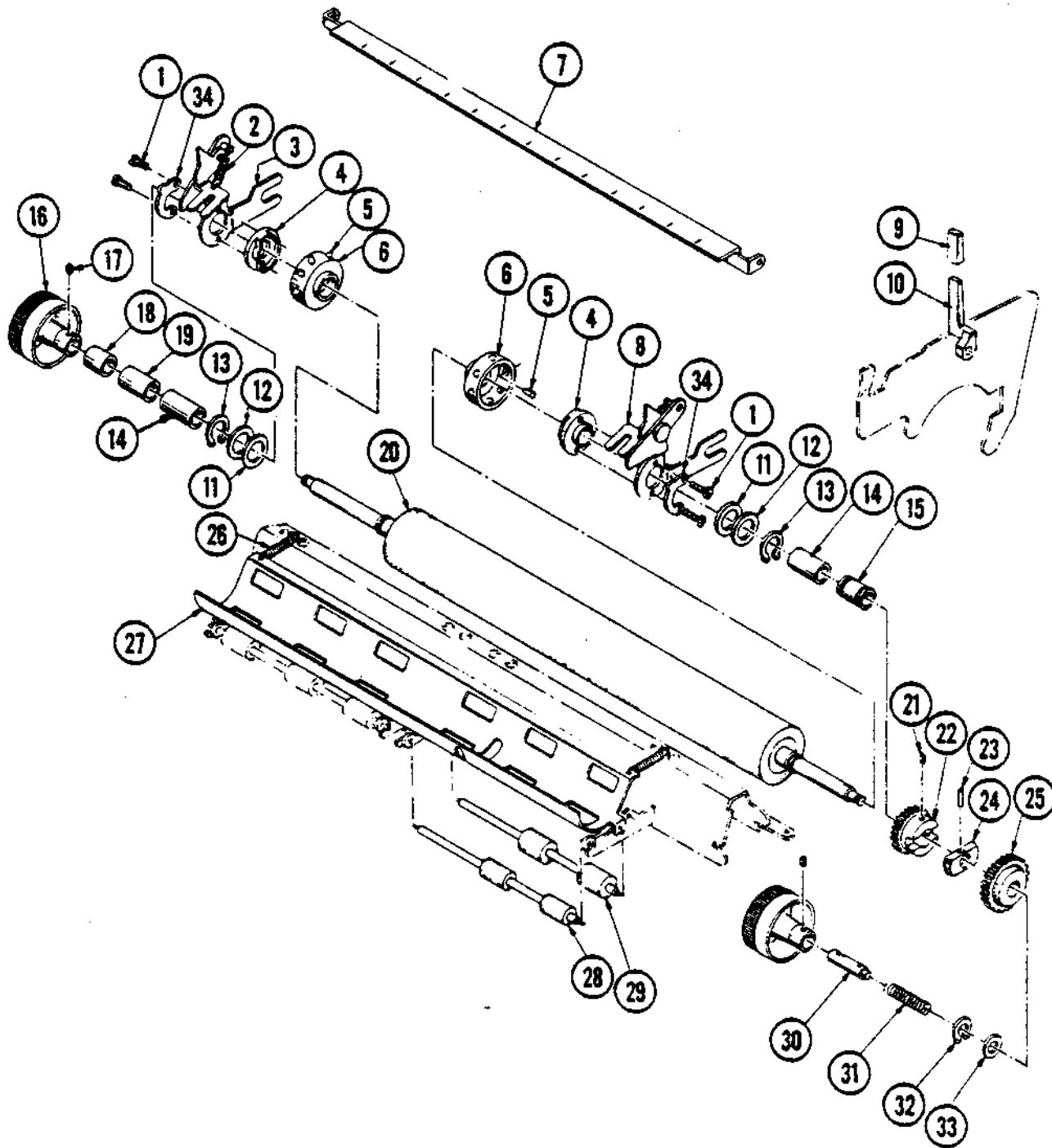
<u>DESCRIPTION</u>	<u>SEE PAGE</u>
A Platen Assembly, Friction (standard)	7-5
Platen Assembly, Friction (WideTrack/TwinTrack)	7-5
Platen Assembly, Pinfeed	7-7
B Platen Carrier, Left Side	7-11
C Structure Assembly, Left Side	7-9
D Carriage	
Upper	7-23
Lower	7-25
TwinTrack	7-27
E Platen Carrier, Center	7-21
F Paper and Printwheel Heatsink	7-29
G Structure, Common Parts	7-35
264 Col. Differences	7-15
TwinTrack Differences	7-17
H Motherboard (standard or WideTrack)	7-31
Motherboard (TwinTrack)	7-33
I Platen Carrier Assembly, Right Side	7-19
J Carriage Drive, Heatsink	7-29
K Structure, Right Side	7-13

FRICTION PLATENS



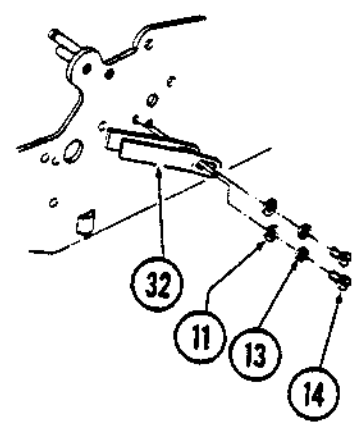
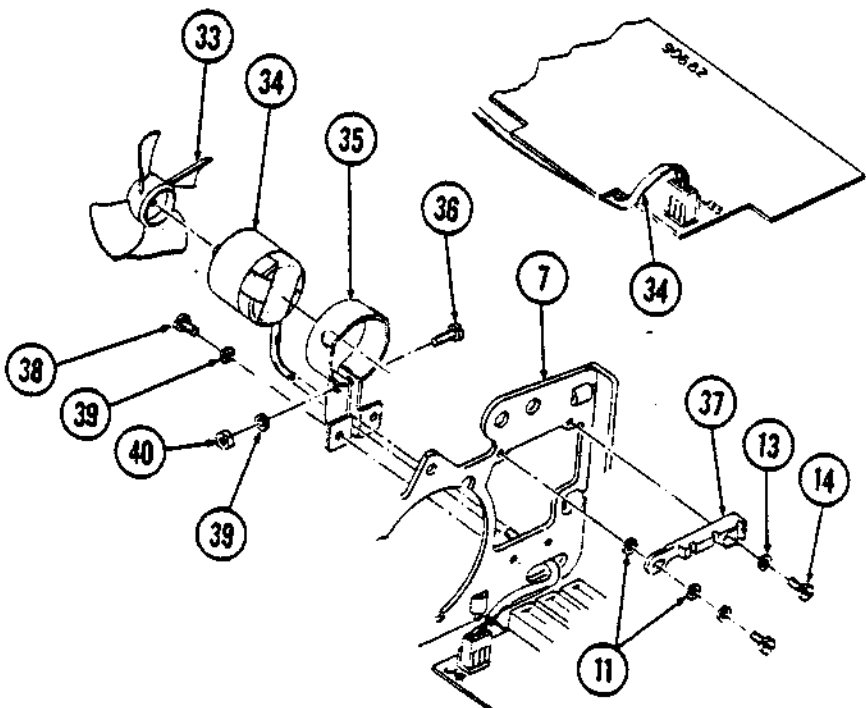
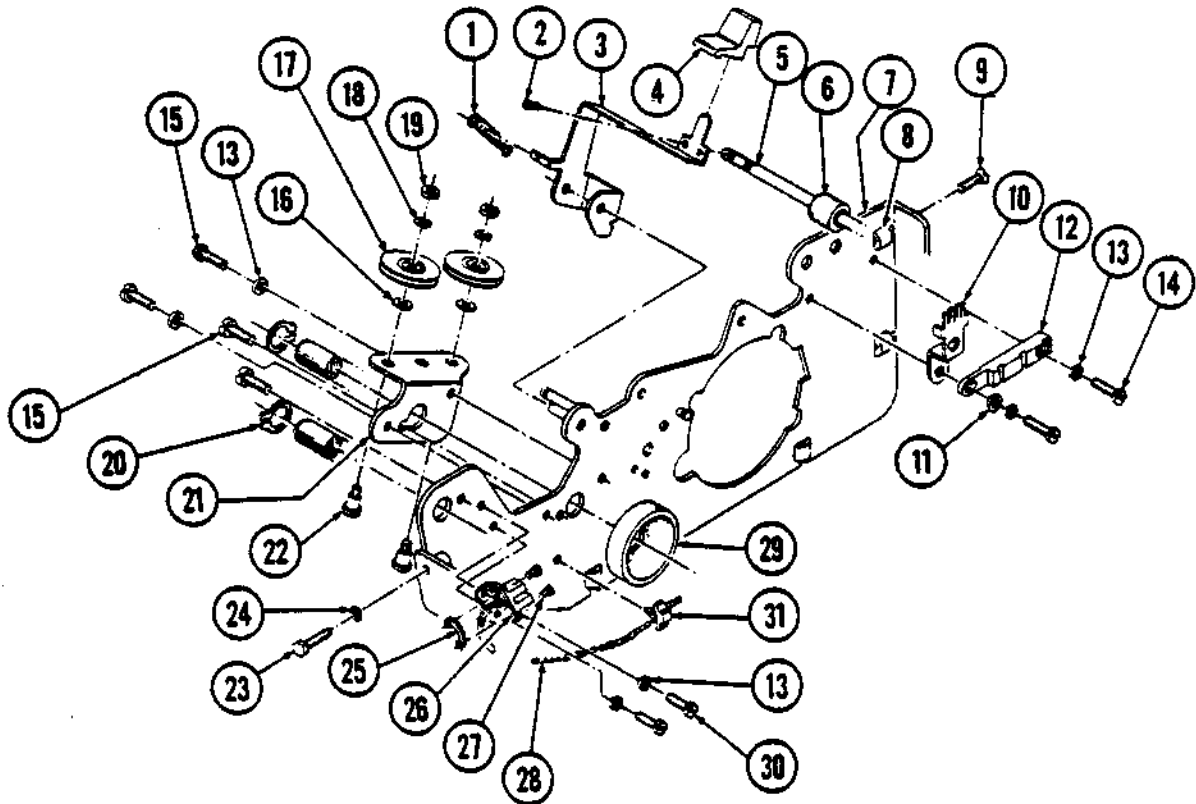
FRICTION PLATENS

Platen Assembly Complete (Standard)	80022-01
Platen Assembly Complete (WideTrack/TwinTrack)	80022-03
Split Platen Assembly Complete (Requires dual paper feed option on printer)	80907-XX
(1) 85207-02	Set Screw 8-32X.125, Splined Socket
(2) 80045-01	Knob Asy, Platen, Charcoal Grey
80045-02	Knob Asy, Platen, Cordovan Brown
(3) 80513-02	Spacer, Platen (.620)
(4) 80515	Sleeve, Bearing
(5) 80513-01	Spacer, Platen (1.061)
(6) 80205-01	Platen Asy, 132 Col.
80205-03	Platen Asy, 264 Col.
(7) 80514	Sleeve, Right Platen
(8) 80206-04	Set Screw 6-32X.250, Splined Socket
(9) 80175	Gear, Tractor Drive
(10) 85000-03	Needle Roll, .062X.53
(11) 80176	Platen Driver
(12) 80177	Platen Gear
(13) 80857	Shim, Platen Asy
(14) 85145-31	Retaining Ring, 5100-31
(15) 80198	Spring, Compression
(16) 80594	Shaft, Push Platen
(17) 80720	Guide, Split Platen
(18) 80513-03	Spacer, Split Platen
(19) 80505-01	Platen Asy, Crt. Split, 132 Col.
88057-01	Platen Asy, Ctr. Split, 264 Col.



PIN FEED PLATENS

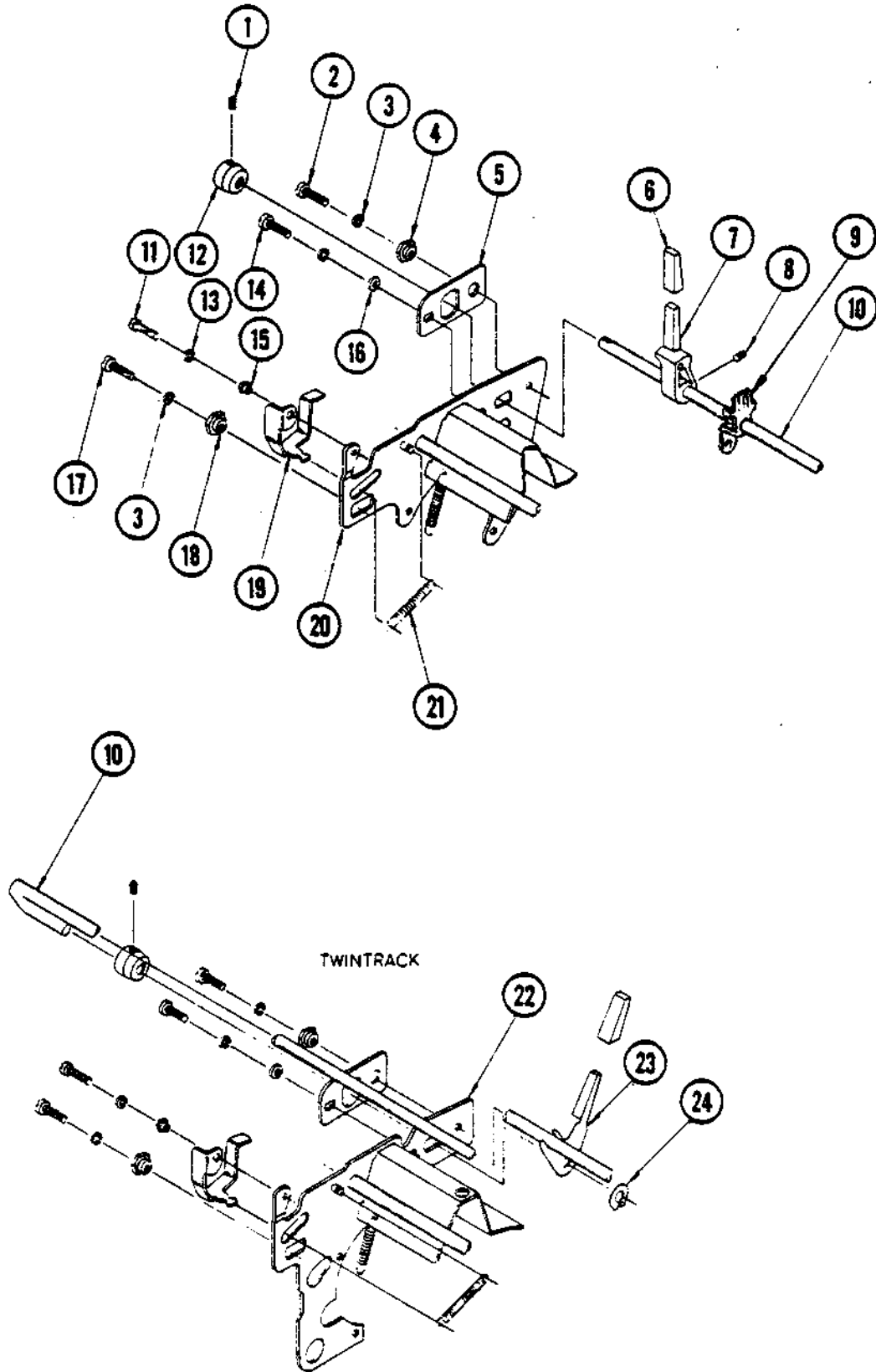
	80012-01	14.375 Pin to Pin	(14)	80513-01	Spacer, Platen (1.061) Fill Hd.
	80012-02	13.125 Pin to Pin	(15)	80514	Sleeve, Right Pltn
	80012-03	8.000 Pin to Pin	(16)	80045-01	Knob Asy, Pltn, Char Grey
	80012-04	9.000 Pin to Pin	(17)	85207-02	Set Screw 8032X.125, Splined Socket
	80012-05	14.44 Pin to Pin	(18)	80513-02	Spacer, Pltn. (.620)
	80012-06	9.375 Pin to Pin	(19)	80515	Sleeve, Bearing
(1)	85014-03	Screw 4-40X.187, Slot, Fill Hd.	(20)	80497-01	P F Pltn Asy, 14.375
(2)	80516	Spring, Ext Paper Guide		80497-02	P F Pltn Asy, 13.125
(3)	80490-01	Bracket Asy, Left Side		80497-03	P F Pltn Asy, 8.000
(4)	80486	Cam, P F Pltn		80497-04	P F Pltn Asy, 9.000
(5)	80527	Pin, P F Pltn		80497-05	P F Pltn Asy, 14.449
(6)	80487	Pin Guide, P F Pltn		80497-06	P F Pltn Asy, 9.375
(7)	80443-03	Scale Asy For 13.125 (80012-02)	(21)	80497-07	P F Pltn Asy, 11.500
	88028-01	Scale Asy For 8.000 (80012-03)	(22)	85206-04	Set Screw 6-32X.250, Splined Socket
	88028-02	Scale Asy For 9.000 (80012-04)	(23)	80175	Gear, Tractor Drive
	88028-03	Scale Asy For 9.375 (80012-06)	(24)	85000-03	Needle Roll .062X.53
	88028-04	Scale Asy For 11.500 (80017-07)	(25)	80176	Pltn Driver
(8)	80490-02	Bracket Asy, R.S. For 14.375; 13.125; 14.44 (80012-01, -02, -05)	(26)	80177	Pltn Gear
	88030-01	Bracket Asy, R.S. For 8.000 (80012-03)	(27)	80334	Spring, Ext Cradle
	88030-02	Bracket Asy, R.S. For 9.000 (80012-04)		88027-01	Special Cradle Asy For 8.000 (80012-03)
	88030-03	Bracket Asy, R.S. For 9.375 (80012-06)		88027-02	Special Cradle Asy For 9.000 (80012-04)
	88030-04	Bracket Asy, R.S. For 11.500 (80012-07)	(28)	88027-03	Special Cradle Asy For 9.375 (80012-06)
(9)	80701-01	Cap, Lever, Char Grey	(29)	88027-04	Special Cradle Asy For 11.500 (80012-07), 80012-01, -02, -05, Use Std Cradle, 80032-03)
(10)	88026	Lever, Feed Roll Disable For 80012-03, -04, -06, -07,	(30)	88038	Shaft Asy, Front For 80012-03
(11)	85293-01	Washer, Nylon .015 Thick	(31)	88037	Shaft Asy, Rear For 80012-03
(12)	85293-02	Washer, Nylon .005 Thick	(32)	80594	Shaft, Push, Pltn
(13)	85145-56	External Retainer, 5100-56	(33)	80198	Spring, Compression
			(34)	85145-31	Retaining Ring 5100-31
				80857	Shim, Pltn Asy
				81949	Paper Guide Stop



STRUCTURE - LEFT SIDE

(1)	80237	Spring, Ext	(19)	85122-05	Nut 5-40, Hex
(2)	85074-04	Screw 4-40X.250, Slot Undercut Flat Hd	(20)	85129-50	Retaining Ring (5555-50)
(3)	80257-02	Arm, Bail Roller, Left Side	(21)	80106-02	Bracket, Pulley Mount Left
	80257-02	Arm, Bail Roller, Right Side	(22)	80523	Screw, Cable Pulley
(4)	80320-01	Lever, Pltn Bail, Chrome	(23)	85058-10	Screw, 10-32X.625, Hex Hd
	80320-02	Lever, Pltn Bail, Charcoal Grey	(24)	85124-10	Washer #10, Helical Lock
	80320-03	Lever, Pltn Bail, Cordovan Brown	(25)	80405	Bar Nut, Photo Sensor
(5)	80259-01	Shaft, Bail Rollers, 132 Col	(26)	80404	Bracket, Photo Sensor
	80259-02	Shaft, Bail Rollers, 264 Col	(27)	85004-04	Screw 4-40X.250, Pan Hd
(6)	80329	Roller Asy, Pltn Bail	(28)	99120	Photo Sensor Asy
(7)	80048	Frame Asy, Left Side, Excluding TwinTrack	(29)	80368-00	Photo Module (Part of 99120)
	81848	Frame Asy, Left Side, Excluding TwinTrack	(30)	80719	Bumper, Carriage Deceleration
(8)	80220	Nut, Frame Mounting	(31)	85006-04	Screw 6-32X.250, Pan Hd
(9)	85068-10	Screw 10-32X.625, Flat Hd	(32)	85159	Snap Grip, Wire Fastening
(10)	80187	Detent, Impression Control	(33)	80319	Spring, Carriage Deceleration For 264 Col
(11)	85125-06	Washer #6, Narrow	(34)	85414	Fan, C.W. Std. Mounting
(12)	80306	Guide, PCB Mounting	(35)	81815-01	Motor/Fan Cable Asy (Excluding TwinTrack)
(13)	85124-06	Washer #6, Helical Lock		81815-02	Motor/Fan Cable Asy (TwinTrack Only)
(14)	85006-05	Screw 6-32X.312, Pan Hd	(36)	81830	Bracket, Fan Motor
(15)	85056-04	Screw 6-32X.250, Hex Hd	(37)	85007-08	Screw 8-32X.500, Slot Pan Hd
(16)	80109	Washer, Pulley	(38)	81846	Guide, PCB Mounting S5 & TT
(17)	80037	Pulley Asy, Idler	(39)	85007-05	Screw 8-32X.312, Slot Pan Hd
(18)	85124-05	Washer #5, Helical Lock	(40)	85124-08	Washer #8, Helical Lock
				85122-08	Nut 8-32, Hex

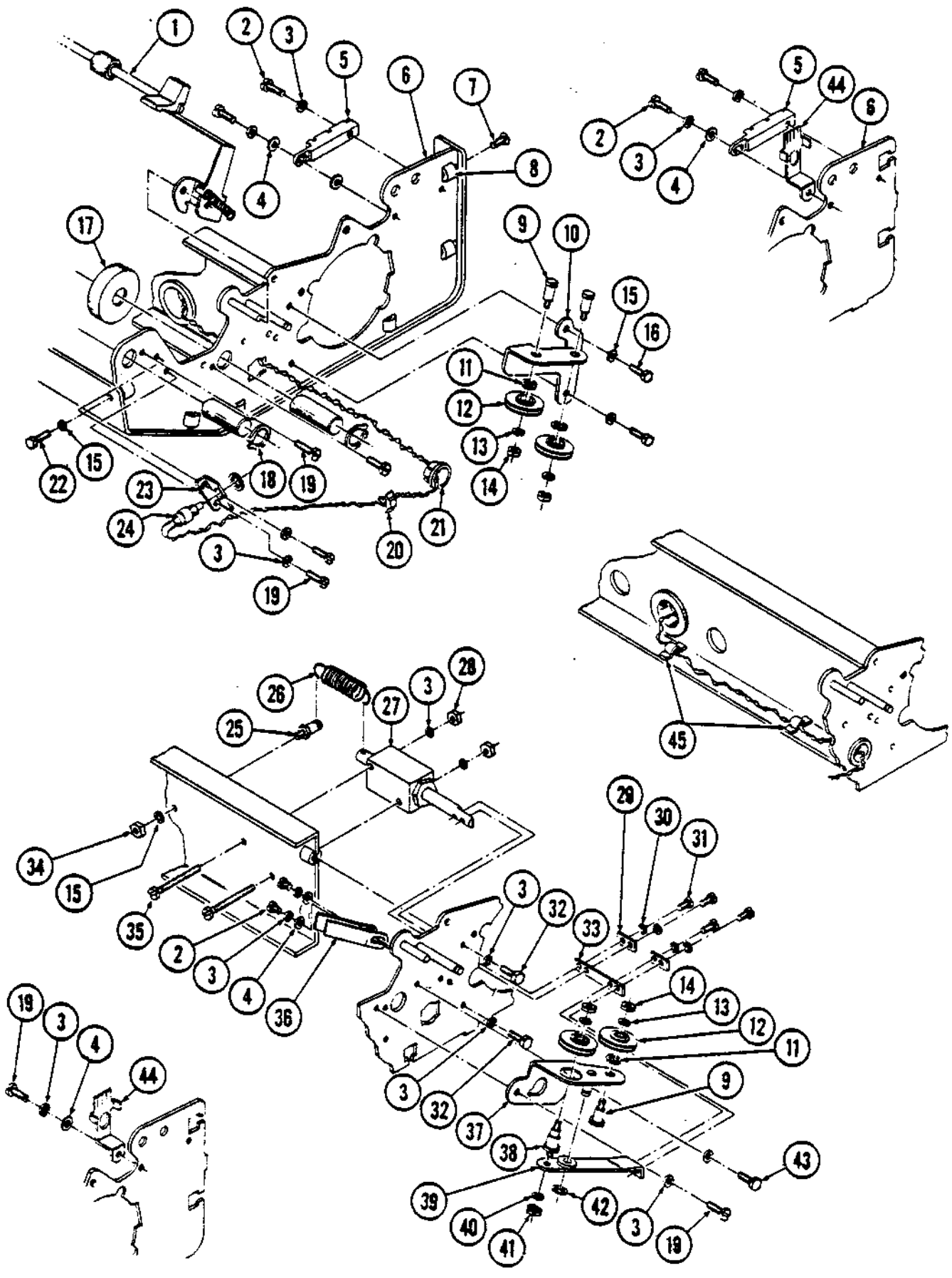
PLATEN CARRIER - LEFT SIDE



PLATEN CARRIER - LEFT SIDE

- (1) 85207-03 Set Screw 8-32X.187, Splined Socket
- (2) 85007-06 Screw 8-32X.375, Slot Pan Hd
- (3) 85124-08 Washer #8, Helical Lock
- (4) 81081 Eccentric, Platen Rear
- (5) 80183 Plate, Impression Control Adjustment
- (6) 80707-01 Cap, Lever Char Grey
- 80707-02 Cap, Lever Cordovan Brown
- 80707-03 Cap, Lever Chrome Plated
- (7) 80186 Lever, Impression Cntl (Excluding TwinTrack)
- (8) 85207-04 Set Screw 8-32X.250, Splined Socket
- (9) Detent, Impression Cntl (Excluding TwinTrack)
- (10) 80185-01 Shaft, Impression Cntl, 132 Col
- 80185-02 Shaft, Impression Cntl, WideTrack
- 81828-02 Shaft, Impression Cntl, TwinTrack
- (11) 85006-05 Screw 6-32X.312, Slot Pan Hd
- (12) 80184 Eccentric, Impression Control
- (13) 85124-06 Washer #6, Helical Lock
- (14) 85007-05 Screw 8-32X.500, Slot Pan Hd
- (15) 80156 Eccentric, Pltn Latch
- (16) 85125-08 Washer #8, Narrow
- (17) 85007-08 Screw 8-32X.500, Slot Pan Hd
- (18) 80781 Eccentric, Pltn Front
- 80182 Replaced by 80781
- (19) 80141 Latch, Pltn
- (20) 80040 Frame Asy, Pltn (Excluding TwinTrack)
- (21) 80234 Spring, Ext, Pltn Latch
- (22) 81849 Frame Asy, Pltn Left (TwinTrack)
- (23) 81829 Impression Lever, (TwinTrack)
- (24) 85129-31 Gripping Ring (5555-31)

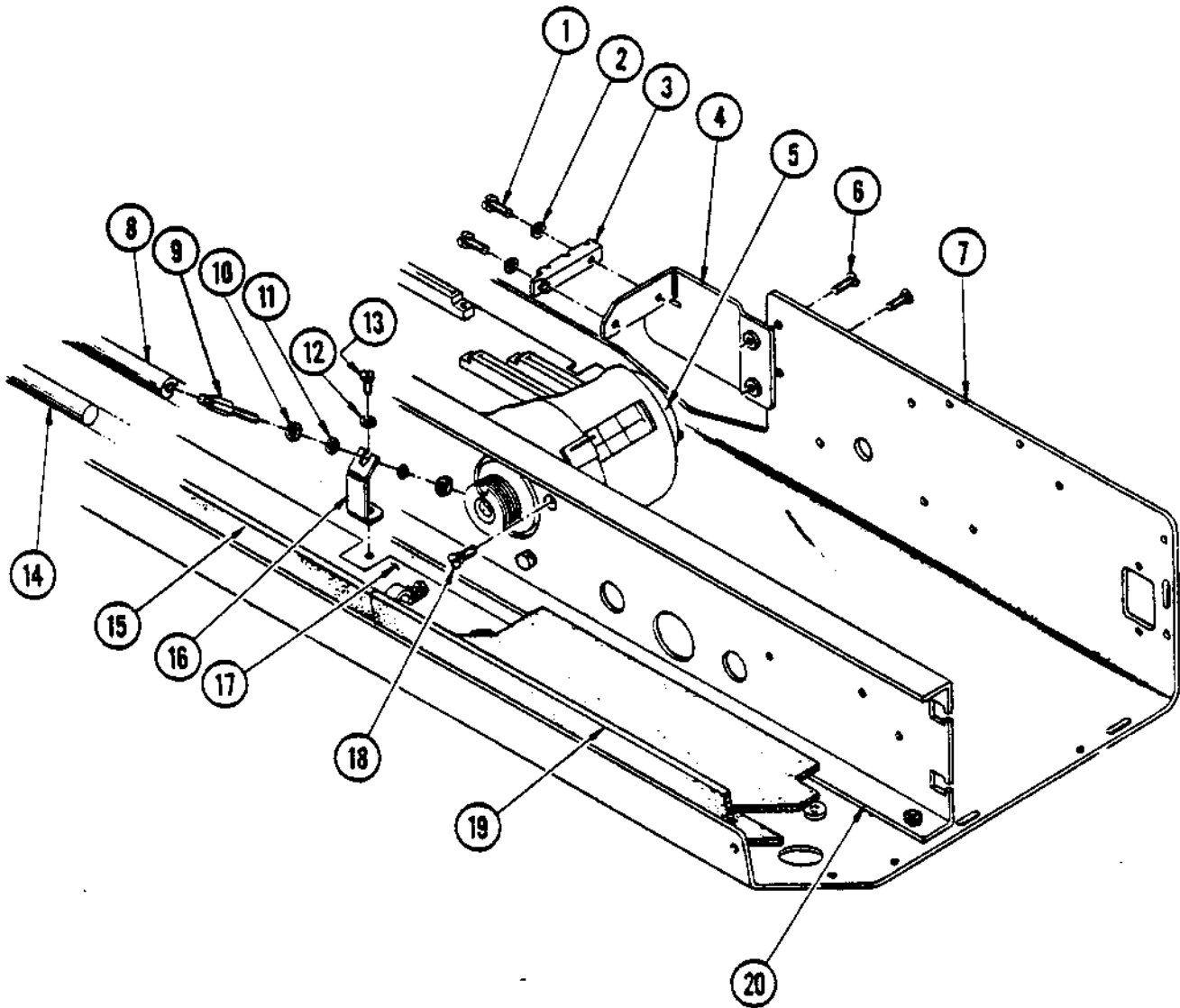
STRUCTURE - RIGHT SIDE



STRUCTURE - RIGHT SIDE

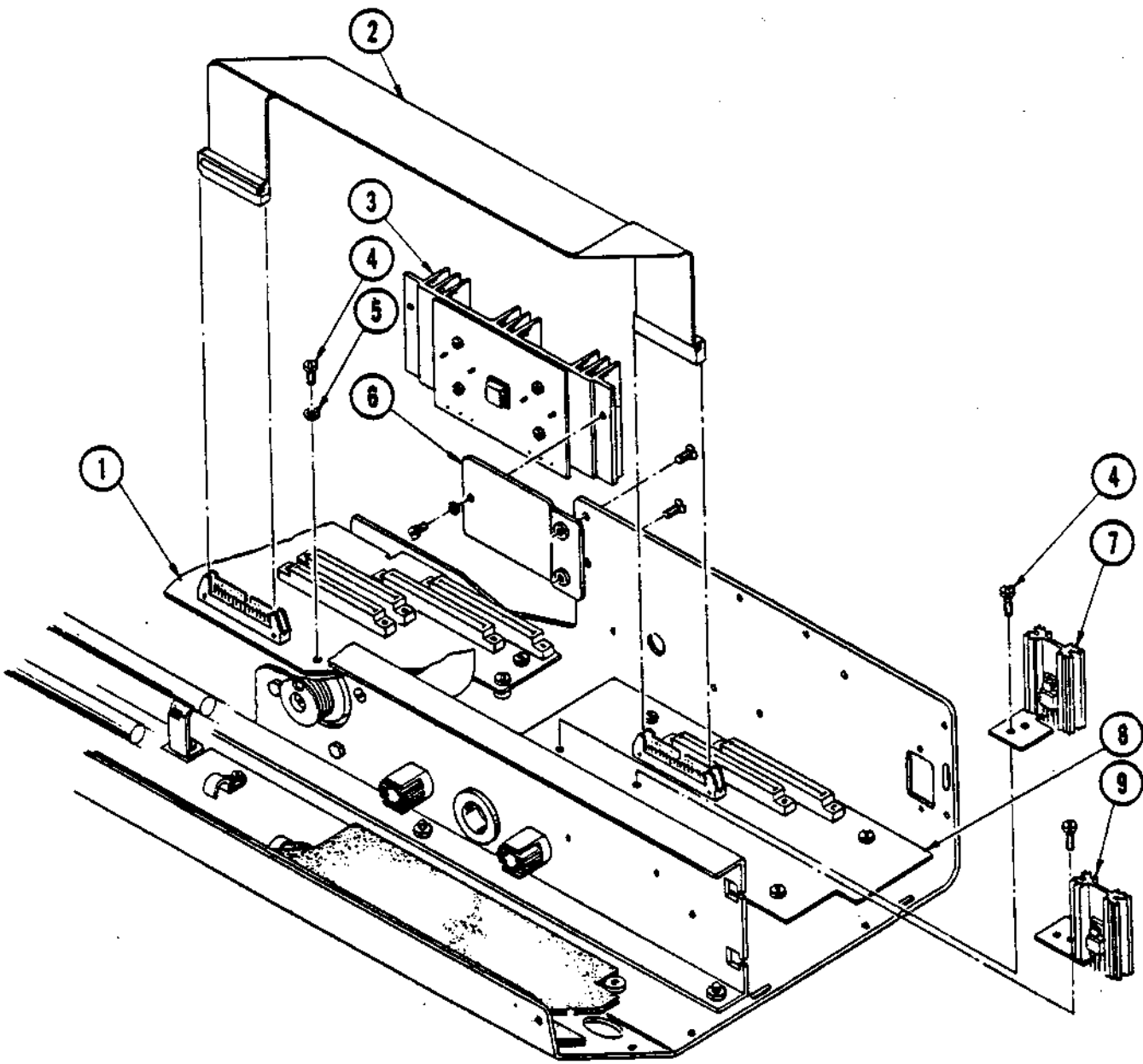
(1)	80025-01	Bail Roller Asy, 132 Col	(25)	80666	Stud, Spring Dashpot
	80025-02	Bail Roller Asy, 264 Col (See Left Side Structure Asy for Bail Asy Parts)	(26)	81929	Spring, Dashpot
(2)	85006-05	Screw 6-32X.312, Pan Hd	(27)	80674	Dashpot, Cylinder Asy
(3)	85124-06	Washer #6, Helical Lock	(28)	85122-06	Nut 6-32, 1/4 Hex
(4)	85125-06	Washer #6, Narrow	(29)	80671	Plate, Flexure
(5)	80306	Guide, PCB Mounting	(30)	85124-04	Washer #4, Helical Lock
(6)	80050	Frame Asy, Right Side	(31)	85004-04	Screw 4-40X.250, Pan Hd
(7)	85068-10	Screw 10-32X.625, Flat Hd	(32)	85058-10	Screw 10-32X.625, Hex Hd
(8)	80220	Nut, Frame Mounting	(33)	80665	Flexure, Dashpot
(9)	80523	Screw, Cable Pulley	(34)	85122-10	Nut 10-32, Hex
(10)	80685	Bracket, Flexure Pulley	(35)	85006-20	Screw 6-32X1.250, Pan Hd
(11)	80109	Washer, Pulley	(36)	80319	Spring, Carriage Decel for 264 Col
(12)	80037	Pulley Asy, Idler	(37)	80684	Bracket and Stud Asy
(13)	85124-05	Washer #5, Helical Lock	(38)	80107	Stud, Pulley
(14)	85122-05	Nut 5-40, Hex	(39)	80673	Lever Asy, Dashpot
(15)	85124-10	Washer #10, Helical Lock	(40)	85124-08	Washer #8, Helical Lock
(16)	85058-12	Screw 10-32X.750, Hex Hd	(41)	85122-08	Nut 8-32, Hex
(17)	80719	Bumper, Carriage Decel	(42)	85128-25	Retaining Ring (5133-25)
(18)	85129-50	Retaining Ring (5555-50)	(43)	85056-04	Screw 6-32X.250, Hex Hd
(19)	85006-04	Screw 6-32X.250, Pan Hd	(44)	80187	Detent, Impression Cntl
(20)	85159	Snap Grip, Wire Fastening	(45)	85188-0	Press Clip
(21)	85157-04	Snap Bushing (SB-625-8)			
(22)	85058-10	Screw 10-32X.625, Hex Hd			
(23)	80404	Bracket, Photo Sensor			
(24)	99119-01	Switch Asy, Ribbon Ad- vance 132 Col			
	99119-02	Switch Asy, Ribbon Ad- vance 264 Col			

264 COL STRUCTURE DIFFERENCES



264 COL STRUCTURE DIFFERENCES

- (1) 85006-05 Screw 6-32X.312 Slot
Pan Hd
- (2) 85124-06 Washer #6, Helical Lock
- (3) 88073 Guide PCB Mounting
- (4) 81852 Bracket Asy WideTrack
- (5) 80023-04 Motor/Encoder Asy 264 Col
- (6) 85068-06 Screw 10-32X.375 Slot
Pan Hd
- (7) 88078-01 Pan Asy Bottom, Unslotted
88078-02 Pan Asy Bottom, Slotted
- (8) 80852 Carriage Shaft Rear,
264 Col
- (9) 80856 Post Rail Support
- (10) 85122-10 Nut 10-32, Hex
- (11) 85125-10 Washer #10, Narrow
- (12) 85124-10 Washer #10, Helical Lock
- (13) 85008-05 Screw 10-32X.312, Slot
Pan Hd
- (14) 80116-02 Shaft Carriage Guide,
264 Col
- (15) 81818 Pad Accoustical, Bottom
Pan, Left
- (16) 80855 Sleeve
- (17) 81819 Shield, Bottom Pan
- (18) 85068-08 Screw 10-32X.500, Slot
Flat Hd
- (19) 81817 Pad Accoustical, Bottom
Pan Right
- (20) 88044 Brace Motor Mount, 264 Col

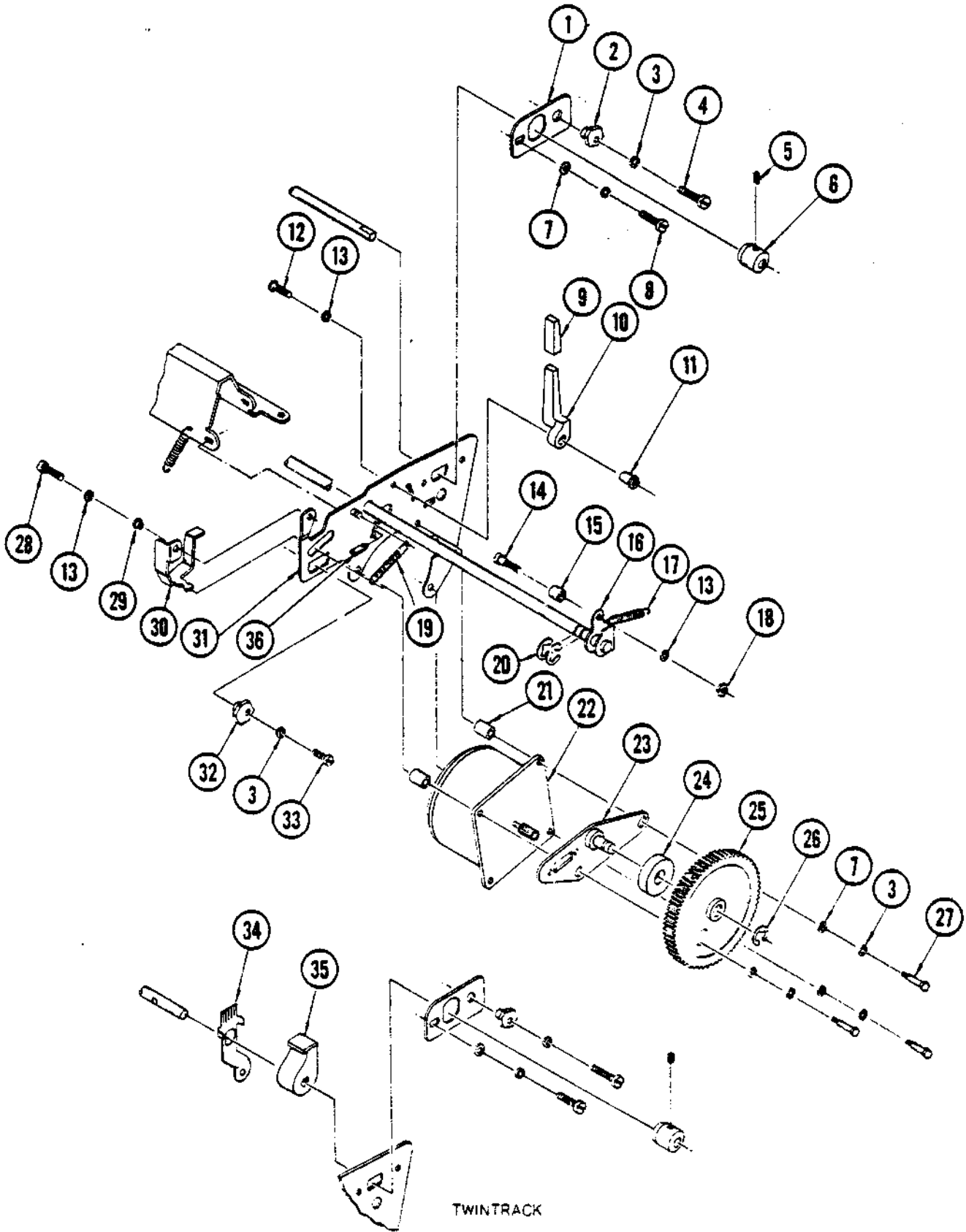


TWINTRACK

TWINTRACK STRUCTURE DIFFERENCES

- (1) 90692 Motherboard Asy, Left, TwinTrack
- (2) 99114 Cable Asy, Motherboard, TwinTrack
- (3) 90752 Carriage Driver PCB Asy
- (4) 85008-09 Screw 10-32X.562 Slot Pan Hd
- (5) 85162-10 Washer #10, Internal Star
- (6) 81854 Bracket Asy, Bottom Pan
- (7) 81803-01 Printwheel Drive Asy, Left, TwinTrack
- (8) 90682 Motherboard Asy, Right, TwinTrack
- (9) 81803-02 Printwheel Drive Asy, Right, TwinTrack

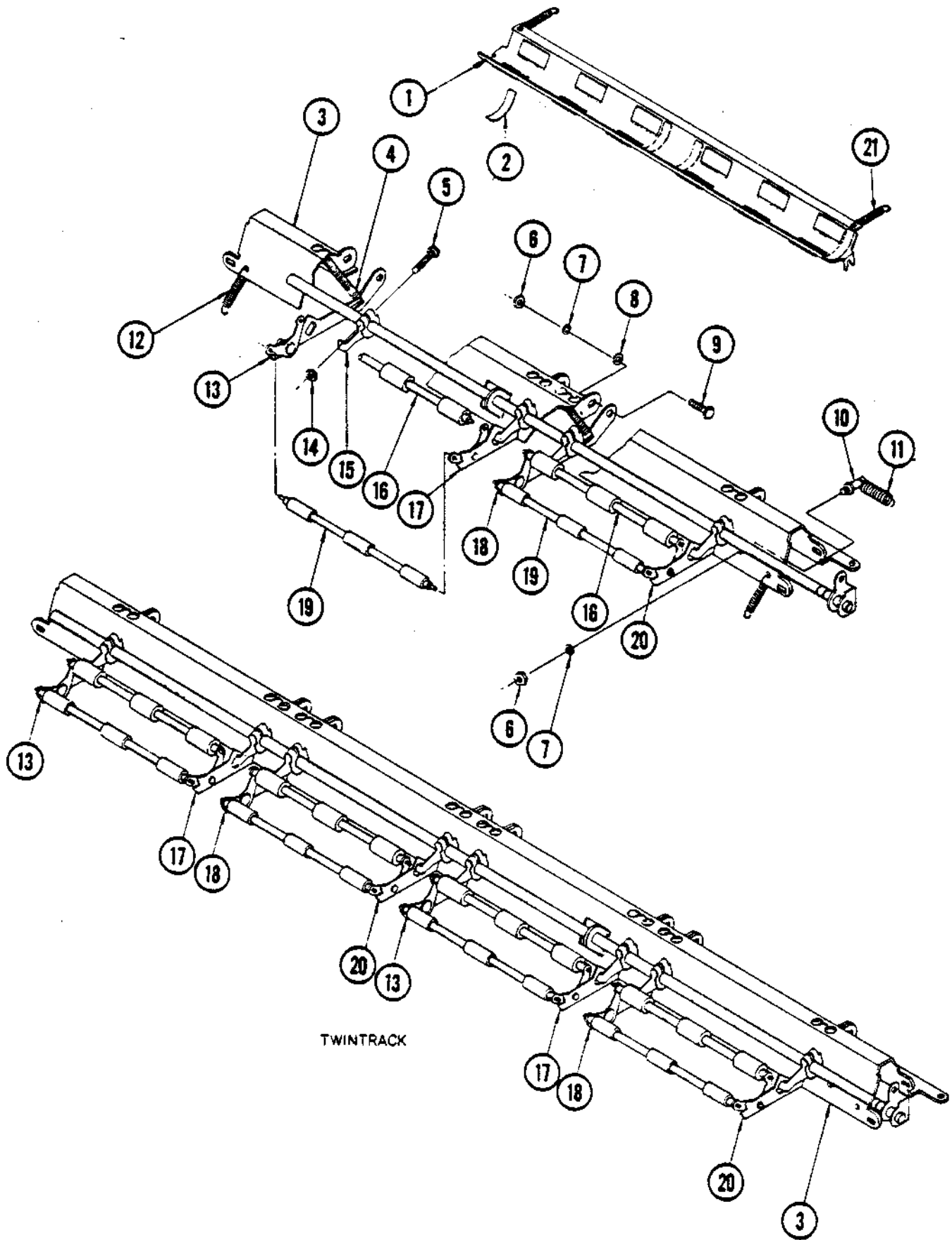
PLATEN CARRIER - RIGHT SIDE



PLATEN CARRIER - RIGHT SIDE

(1)	80183	Plate, Impression Cntl Adjustment	(18)	85122-66	Nut 6-32 Hex (5/16")
(2)	80181	Eccentric Pltn, Rear	(19)	80234	Spring, Extension, Platen Latch
(3)	85124-08	Washer #8, Helical Lock	(20)	85128-37	Retainer, E-Ring (X5133-37)
(4)	85007-06	Screw 8-32X.375, Slot, Pan Hd	(21)	80197-01	Spacer For .15 Thk Mtg Plate
(5)	85207-03	Set Screw 8-32X.187, Splined Socket		80197-02	Spacer For .08 Thk Mtg Plate
(6)	80184	Eccentric, Impression Control	(22)	80046-02	Paperfeed Motor, 132 Col
(7)	85125-08	Washer #8, Narrow		80046-08	Paperfeed Motor, 264 Col
(8)	85007-05	Screw 8-32X.312, Splined Socket	(23)	80339-00	Gear Plate Asy, R.H.
(9)	80707-01	Cap, Lever, Char Grey	(24)	80398	Washer, Lubrication
	80707-02	Cap, Lever, Cordovan Brwn	(25)	80202	Gear, Idler
	80707-03	Cap, Lever, Chrome Plated	(26)	85128-31	E-Ring Retainer (X5133-31)
(10)	80160	Lever, Feed Roller Disable	(27)	85057-14	Screw 8-32X.875, Hex Hd
(11)	80620	Shoulder Nut, Feed Roller Disable Lever	(28)	85006-05	Screw 6-32X.312, Slot Pan Hd
(12)	85056-07	Screw 6-32X.437, Hex Hd	(29)	80156	Eccentric, Pltn Latch
(13)	85124-06	Washer #6, Helical Lock	(30)	80141	Latch, Pltn
(14)	80149	Screw, Shoulder, Cam Follower	(31)	80040	Frame Asy, Pltn (All)
(15)	80150	Roller, Cam Follower	(32)	80781	Eccentric, Pltn Front
(16)	80036-01	Shaft Asy, Feed Roll Disable 132 Col	(33)	85007-08	Screw 8-32X.500, Slot Pan Hd
	80036-02	Shaft Asy, Feed Roll Disable 264 Col	(34)	80187	Detent, Impression Control TwinTrack
(17)	80333	Spring, Extension, Cam Follower	(35)	81839	Impression Control TwinTrack
			(36)	80132	Wedge

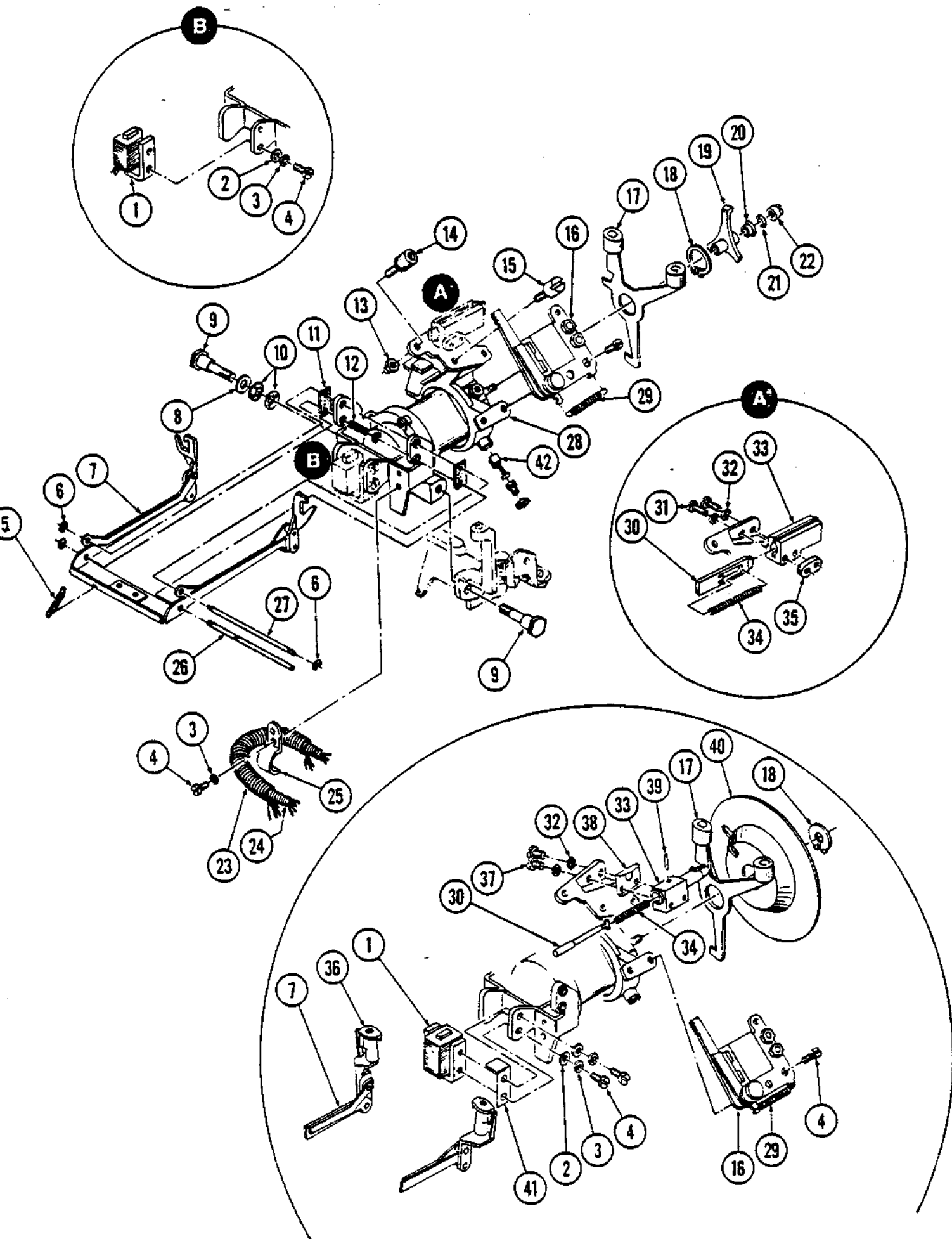
PLATEN CARRIER - CENTER PARTS



TWINTRACK

PLATEN CARRIER - CENTER PARTS

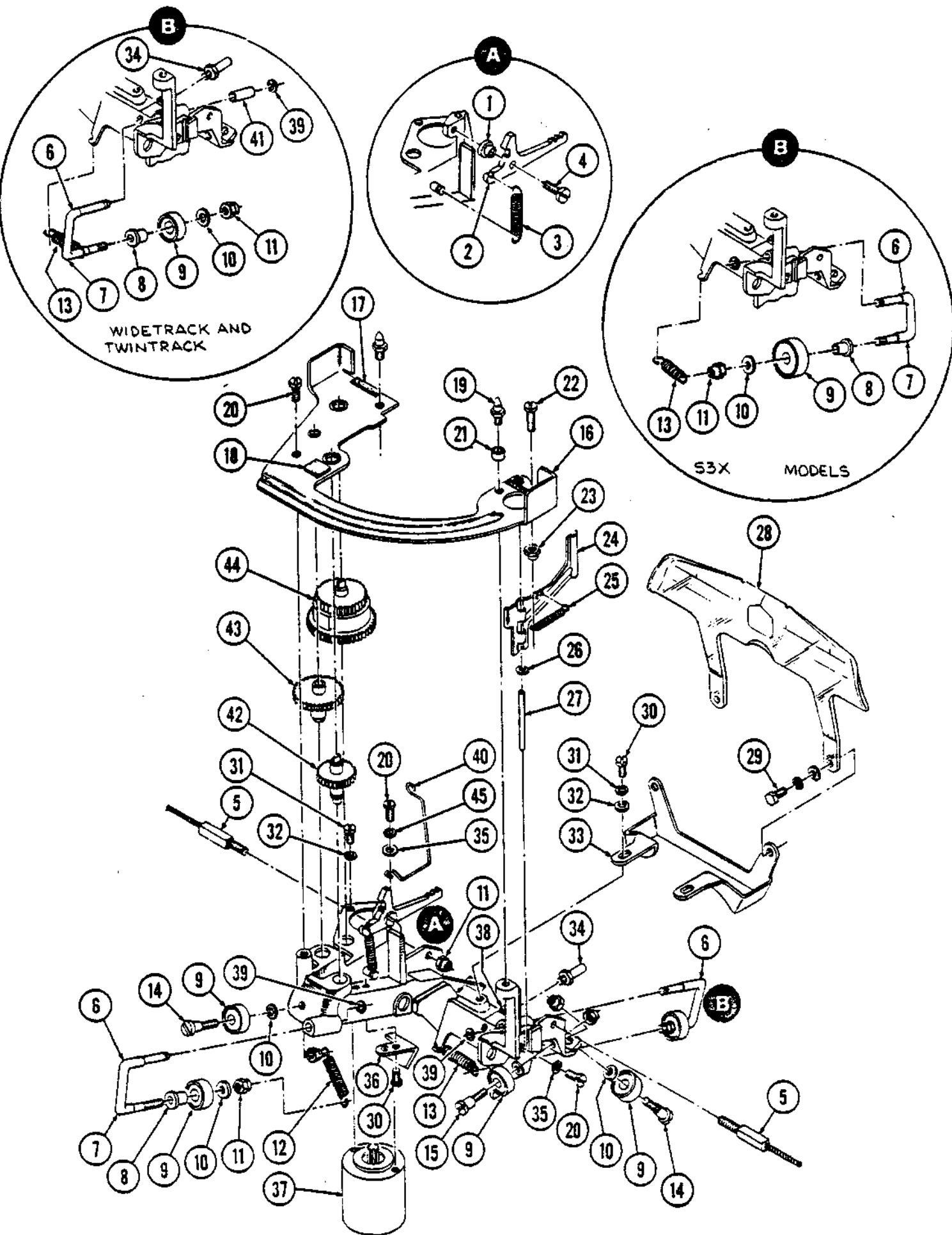
- (1) 80032-03 Cradle Asy with Tape
80012-01 Pinfeed (14.375")
80012-02 Pinfeed (13.125")
80012-03 Pinfeed (8")
80012-04 Pinfeed (9")
80012-05 Pinfeed (14.449")
80012-06 Pinfeed (9.375")
80012-07 Pinfeed (11.5")
- (2) 85185 *Film Tape, Clear*
(1/4" Wide X 1 1/2" Long)
- (3) 80130 Brace, Pltn, 132 Col
88043 Brace, Pltn, 264 Col
- (4) 80598 Spring, Ext, Feed Rollers
- (5) 85056-10 Screw 6-32X.562, Hex Hd
- (6) 85122-08 Nut #8, Hex
- (7) 85124-08 Washer #8, Helical Lock
- (8) 85125-08 Washer #8, Narrow
- (9) 80159 Screw, Shoulder, Feed
Arm Roller
- (10) 80172 Screw Stud, Pltn Asy
Spring
- (11) 80236 Spring, Extension
- (12) 80237 Spring, Extension
- (13) 80041 Arm Asy, Feed Roll,
Left Outer
- (14) 85122-66 Nut #6, Hex (5/16")
- (15) 80142 Bail, Feed Roller
- (16) 80154 Shaft Asy, Rear Feed
Roller
- (17) 80042 Arm Asy, Feed Roller,
Left Inner
- (18) 80044 Arm Asy, Feed Roller,
Right Inner
- (19) 80153 Shaft Asy, Front Feed
Roller
- (20) 80043 Arm Asy, Feed Roller,
Right Outer
- (21) 80334 Spring, Extension, Cradle



UPPER CARRIAGE

(1)	81924	Coil & Core Asy, Single Color Rib.	(23)	80614	Spring, Carriage Conductors
	81943	Coil & Core Asy, Dual Color Rib.	(24)	80613	Spring, Inner, Carriage Conductors
(2)	85125-04	Washer #4, Narrow	(25)	80246	Clamp, Carriage Cable
(3)	85124-04	Washer #4, Helical Lock	(26)	80158	Shaft, Ribbon Bail
(4)	85004-04	Screw 4-40X.250, Slot Pan Hd	(27)	80155	Shaft, Ribbon Links
(5)	80476	Spring, Ribbon Bail	(28)	80336-01	Motor/Encoder Asy, PW S3/55, S5/55
(6)	85128-06	Retainer, E-Ring (Y 5133-6)		80336-02	Motor/Encoder Asy, PW All, Exc S3/55, S5/55, X Mod.
(7)	80380-01	Bail Asy, Ribbon Lift, Exc. Dual Color Ribbon		80336-03	Motor/Encoder Asy, X Models
	80819	Bail Asy, Ribbon Lift, Dual Color Ribbon	(29)	80387	Spring, Ribbon Tension Arm
(8)	85187-01	Shim (.188 I.D.)	(30)	80686-02	Hammer, All Exc X Models
(9)	80248	Pivot, Print Motor Housing		80717	Hammer, X Models
(10)	85140-01	Belleville Washer (.195 I.D.)	(31)	85003-10	Screw 3-48X.625, Slot Pan Hd
(11)	80403	Pad, Ribbon Lift Lubrication	(32)	85124-03	Washer #3, Helical Lock
(12)	80343	Spring, Compression, Ribbon	(33)	80687-02	Hammer Guide, All, Exc X Models
(13)	85137-05	Nut, Self Locking 5-40		80716	Hammer Guide, X Models
(14)	83605	Hammer Arm Stop Asy	(34)	80713	Spring, Hammer, All Exc X Models
(15)	80849	Eccentric, Hammer Arm Stop		80728	Spring, Hammer X Models
(16)	80369-02	Arm Asy, Hammer All, Exc X Models	(35)	80784	Nut Plate, Hammer (Not Required For X Models)
	80368-03	Arm Asy, Hammer, X Models	(36)	80797	Thimble, Ribbon (Dual Color)
(17)	80375-01	Latch Asy, Print Motor, All Exc X Models	(37)	85003-07	Screw 3-48X.437, Slot Pan Hd
	80375-02	Latch Asy, Print Motor, All X Models	(38)	80718	Retainer, Hammer Guide (X Models)
(18)	85145-50	Retainer, External (5100-50) All, Exc X Models	(39)	85000-01	Need Roll (.627 O.D.)
	85243-50	Retainer, External (5101-50) X Models	(40)	80766	Stabilizer, Printwheel (X Models)
(19)	80376	Hub, Print Disk	(41)	80401-00	Shim, Ribbon Magnet, X Models Only
(20)	80407	Collet, Print Disk Hub	(42)	80783-01	Brush Asy, Round Motor
(21)	85140-10	Belleville Washer (.126 I.D.)		80783-02	Brush Asy, Square Motor
(22)	80256	Pilot, Printwheel			

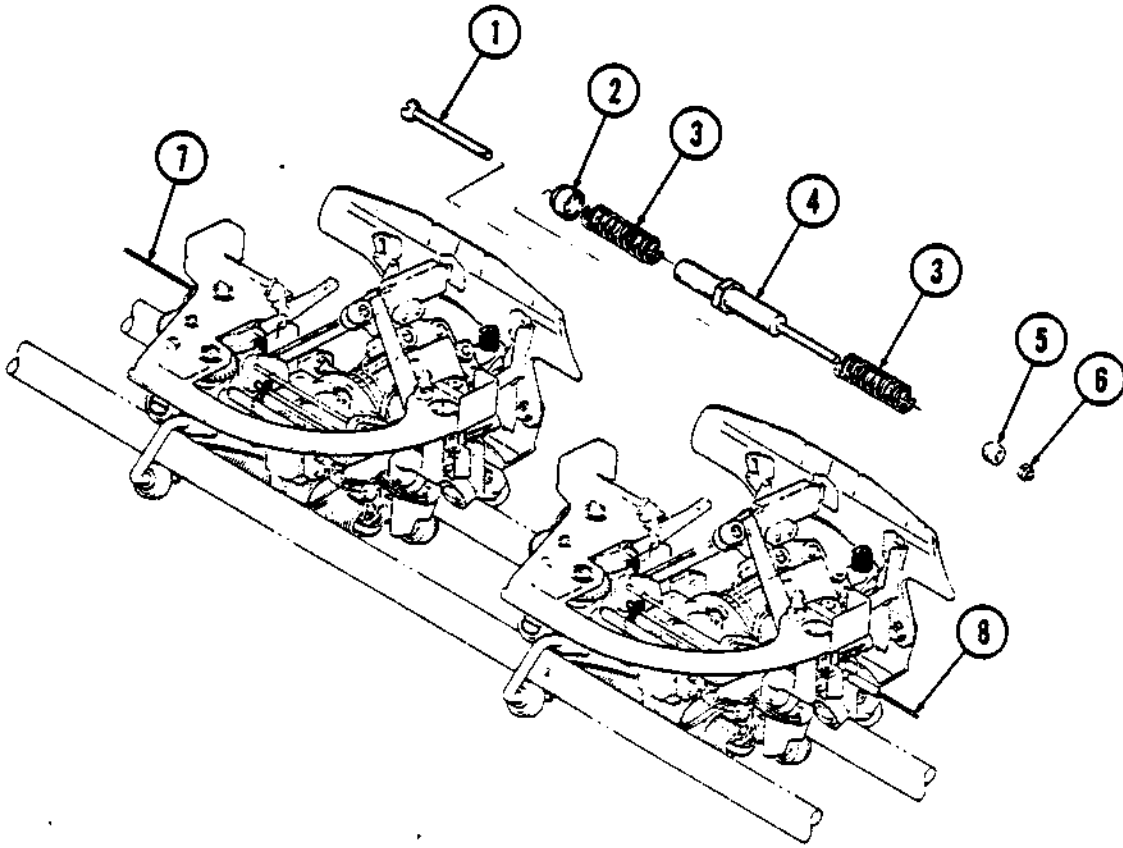
LOWER CARRIAGE



LOWER CARRIAGE

(1)	80217	Bearing, Ribbon Latch	(14)	80104	Screw, Front Guide Bearing
(2)	80219-00	Latch, Ribbon, Exc. Multi-color	(15)	80103	Screw, Guide Bearing
	80219-01	Latch, Ribbon, Multicolor	(16)	80058	Plate Asy, Ribbon Drive
(3)	80304	Spring, Ribbon Box Latch	(17)	80410	Tape (.500X.500)
(4)	85004-05	Screw 4-40X.312, Slot Pan Hd	(18)	80409	Tape (.650X.150)
(5)	85127-01	Cable Carriage Drive R & L 132 Col	(19)	80296	Screw Stud, Ribbon Drive
	85127-02	Cable, Carriage Drive R WT	(20)	85004-04	Screw, 4-40X.250, Slot Pan Hd
	85127-03	Cable, Carriage Drive WT	(21)	80465	Spacer
	85127-04	Cable, Carriage Drive R TT	(22)	85004-06	Screw 4-40X.375, Slot Pan Hd
	85127-05	Cable, Carriage Drive TT	(23)	85137-04	Nut 4-40, Self Locking
(6)	80358	Guide Bearing Link Asy Front All, Rear S3/X30, S3/35, S3/45	(24)	80315	Tension Arm, All W/O Multi-color
	81917	Guide Bearing Link Asy, Rear WT & TT		81914	Tension Arm, All W/Multicolor
	81866	Guide Bearing Link Asy, Rear S/55, S3/55, S3/X40	(25)	80387	Spring, Ribbon Tension Arm, All, Requires 2, Merged, For Multicolor
(7)	80102	Link, Guide Bearing, For 80358 Asy	(26)	80386	Washer
	80853	Link, Guide Bearing, For 81917 Asy	(27)	80316	Shaft Tension Arm Pivot
	81865	Link, Guide Bearing, For 81866 Asy	(28)	80312-01	Line Card Guide
(8)	80330	Bushing, Guide Bearing, All Exc. 81866 Asy	(29)	85053-04	Screw 3-48X.250, Hex Hd
	81902	Busing, Guide Bearing 81866 Asy	(30)	85003-04	Screw 3-45X.250, Slot Pan Hd
(9)	85144-01	Ball Bearing, .500 OD, All Exc 81866 Asy	(31)	85124-03	Washer #3, Narrow Helical Lock
	85144-04	Ball Bearing, .750 OD, 81866 Asy	(32)	85125-03	Washer #3, Line Card Guide
(10)	80105	Washer, Guide Roller, All Exc. 81866 Asy	(33)	80357	Bracket Asy, Line Card Guide
	81901	Washer, Guide Roller, 81866 Asy	(34)	80253	Stud, Print Motor Latch, Exc. TT
(11)	85137-05	Nut, Self Locking 5-40, All		-----	Stud, Print Motor Latch, TT
(12)	80119	Spring, Guide Bearing Link, Front, All	(35)	85125-04	Washer #4, Narrow
(13)	80601	Spring, Guide Bearing Link, Rear, All Ex. S/55, S3/55, S3/X40	(36)	80406	Shutter, Photo Sensor
	81928	Spring, Guide Bearing Link, Rear, S/55, S3/55, S3/X40	(37)	80207	Stepper Motor, 45°
			(38)	80374-01	Pad, Carriage Stop, Square (.063 Thick)
			(39)	85138-12	Retainer, Guide Bearing Link (5103-12)
			(40)	81975	Left Hand Ribbon Tensioner For 80819-B
			(41)	80854	Sleeve For WT & TT
			(42)	80367	Gear Asy, 36T
			(43)	80218	Idler Gear, Ribbon Drive, 44T
			(44)	80057-01	Clutch Asy, Ribbon Drive
			(45)	85124-04	Washer #4, Hexical Lock

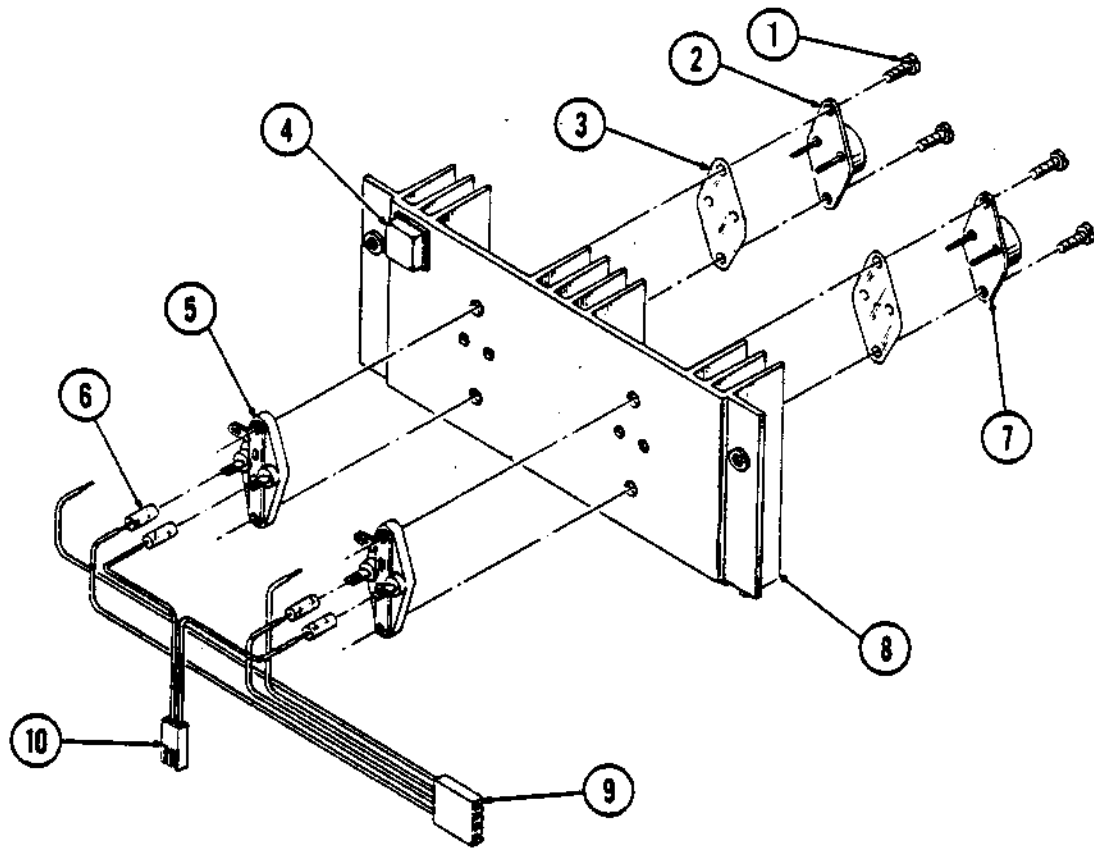
CARRIAGES - TWINTRACK



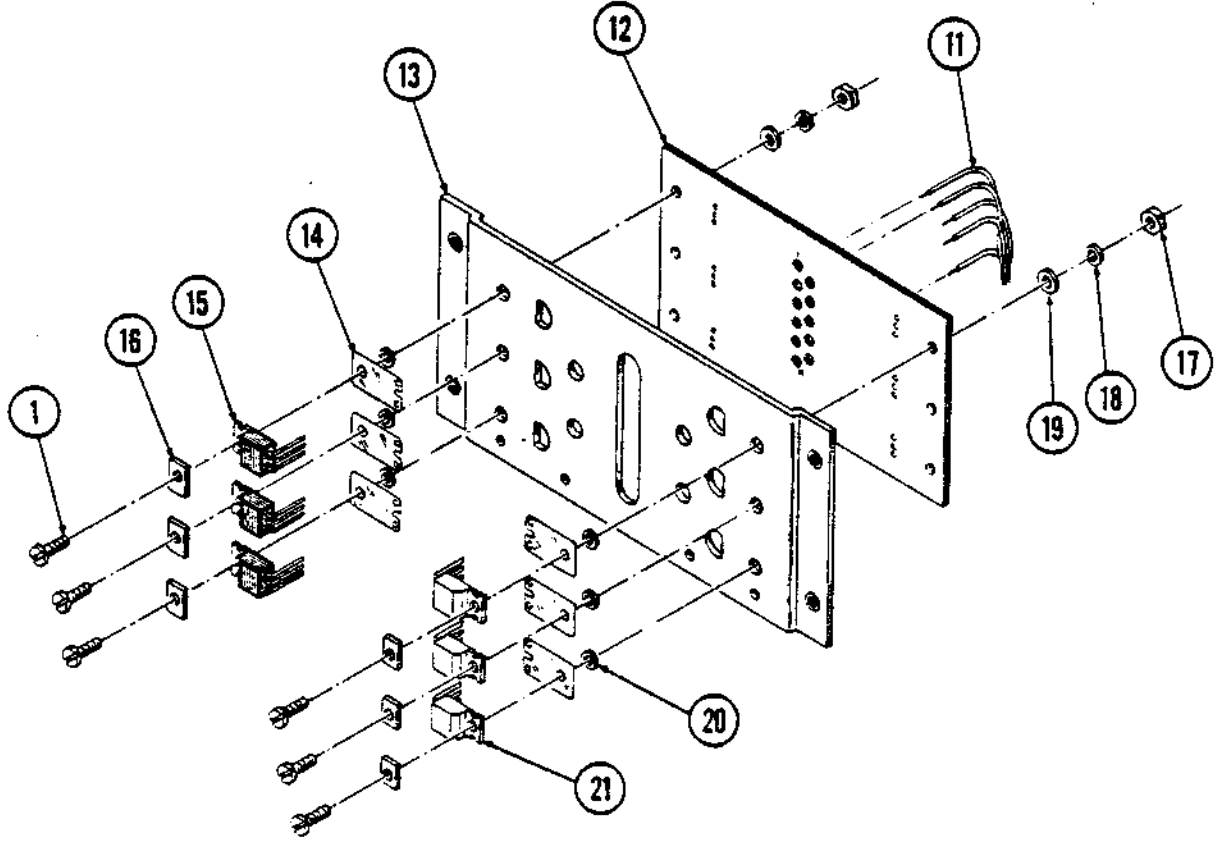
CARRIAGES - TWINTRACK

- (1) 81871 Screw - Carriage
- (2) 81872 Spacer - Carriage
- (3) 81869 Spring - Carriage
- (4) 81870 Standoff - Carriage
- (5) 81859 Spherical Spacer
- (6) 85137-05 Nut - 5-40 Self Locking
- (7) 85127-05 Cable - Carriage Drive (48.25)
- (8) 85127-04 Cable - Carriage Drive (43.45)

CARRIAGE DRIVER HEATSINK



PAPER AND PRINTWHEEL HEATSINK



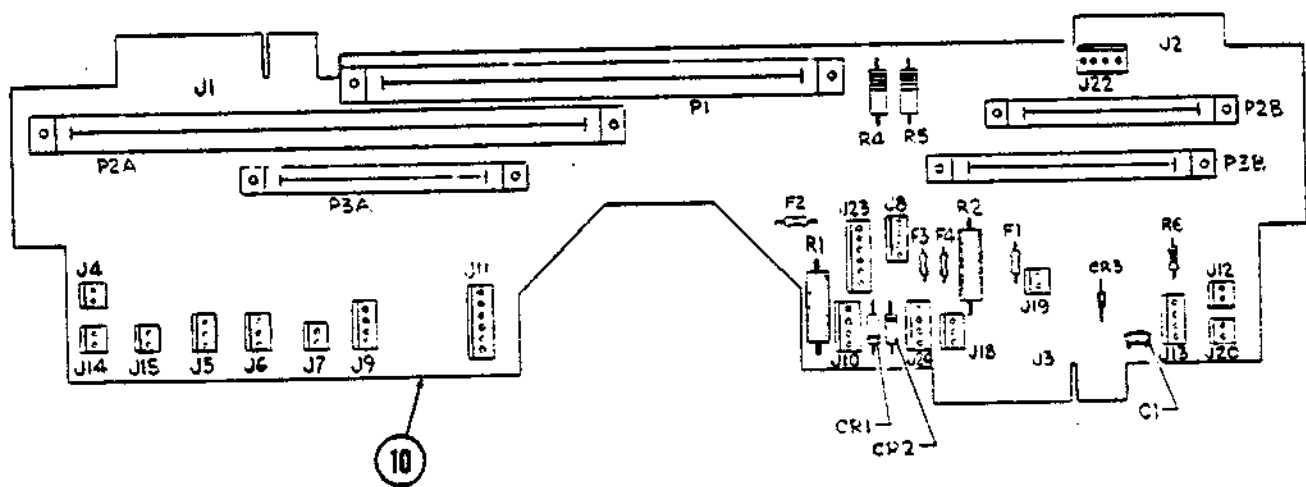
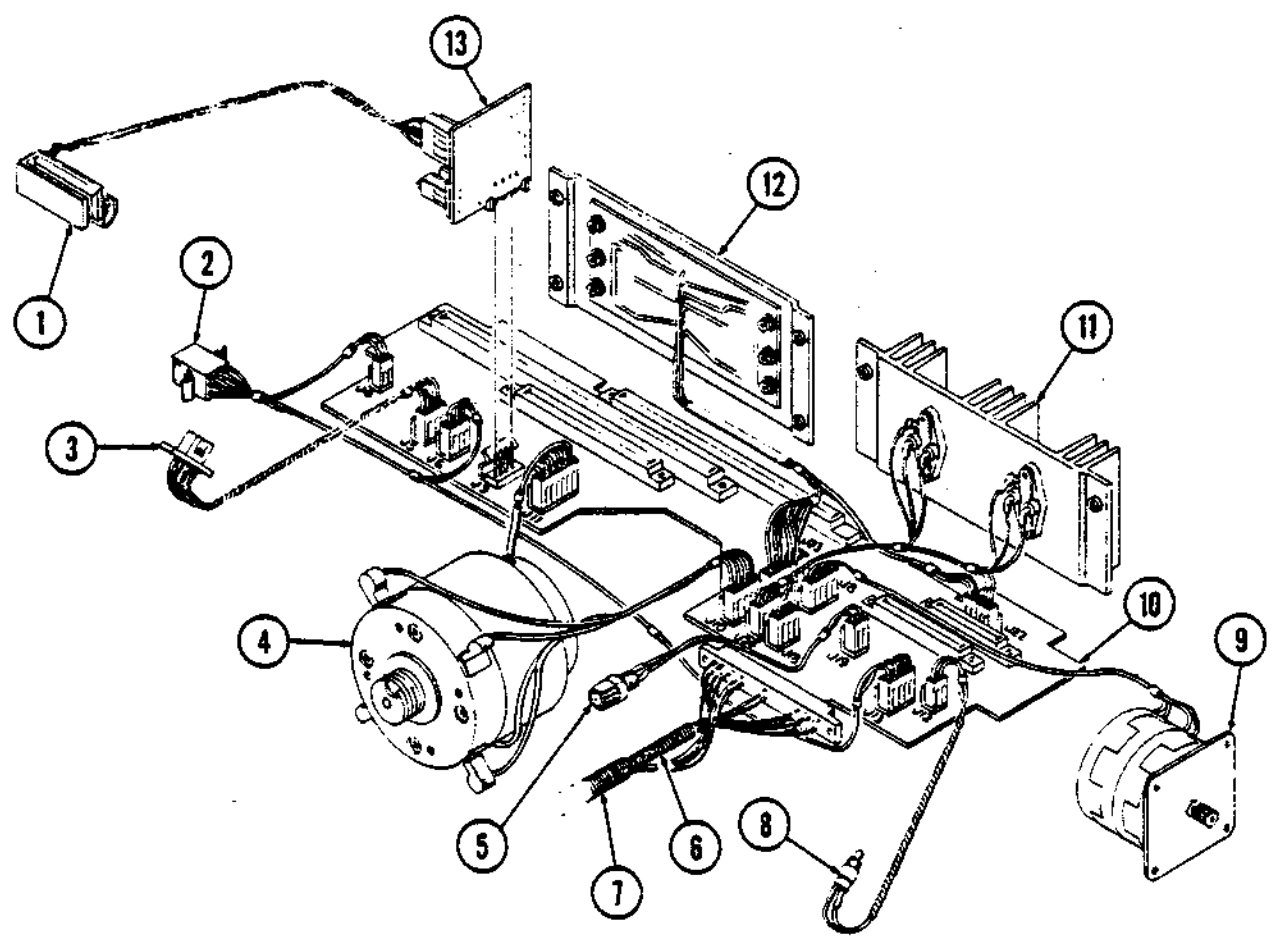
CARRIAGE DRIVER HEATSINK

- (1) 85006-08 Screw #6-32X.500 Pan Hd.
- (2) 97028 Transistor PMD 10K
- (3) Mica Insulator (Part of Transistor 97028)
- (4) 85152-02 Foot
- (5) 94179 Transistor Waffer Socket
- (6) 94140-03 Shrink Tubing 3/16" Dia.
- (7) 97029 Transistor PMD 11K
- (8) 80711 Heatsink S3/S4 Series
- (9) 99073 Cable Asy.
- (10) 99074 Cable Asy. - Power

PAPER AND PRINTWHEEL HEATSINK

- (1) 85006-08 Screw #6-32X.500 Pan Hd.
- (11) 99071 Cable - Paper Feed and Printwheel
- (12) 90091 Printed Circuit Board - Driver
- (13) 80709 Heatsink/Pen Nut Asy.
- (14) 94137 Mica Insulator - Large Rectangle
- (15) 97001 Transistor NPN
- (16) 94134 Rectangular Metal Washer
- (17) 85122-06 Nut #5-40 Full Hex Nut
- (18) 85124-06 Washer #6-32 Helical Lock
- (19) 85126-06 Washer #6-32 Regular Plain
- (20) 94228 Bushing - Nylon #6
- (21) 97013 Transistor PNP

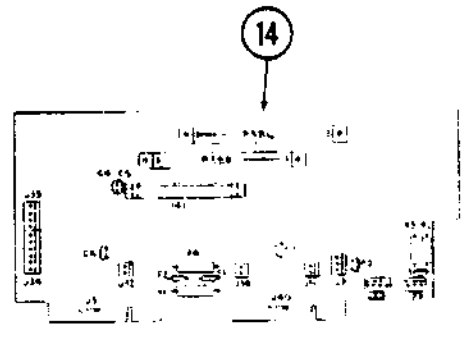
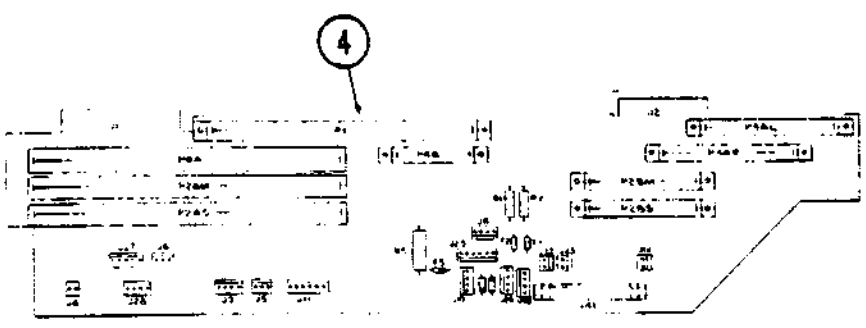
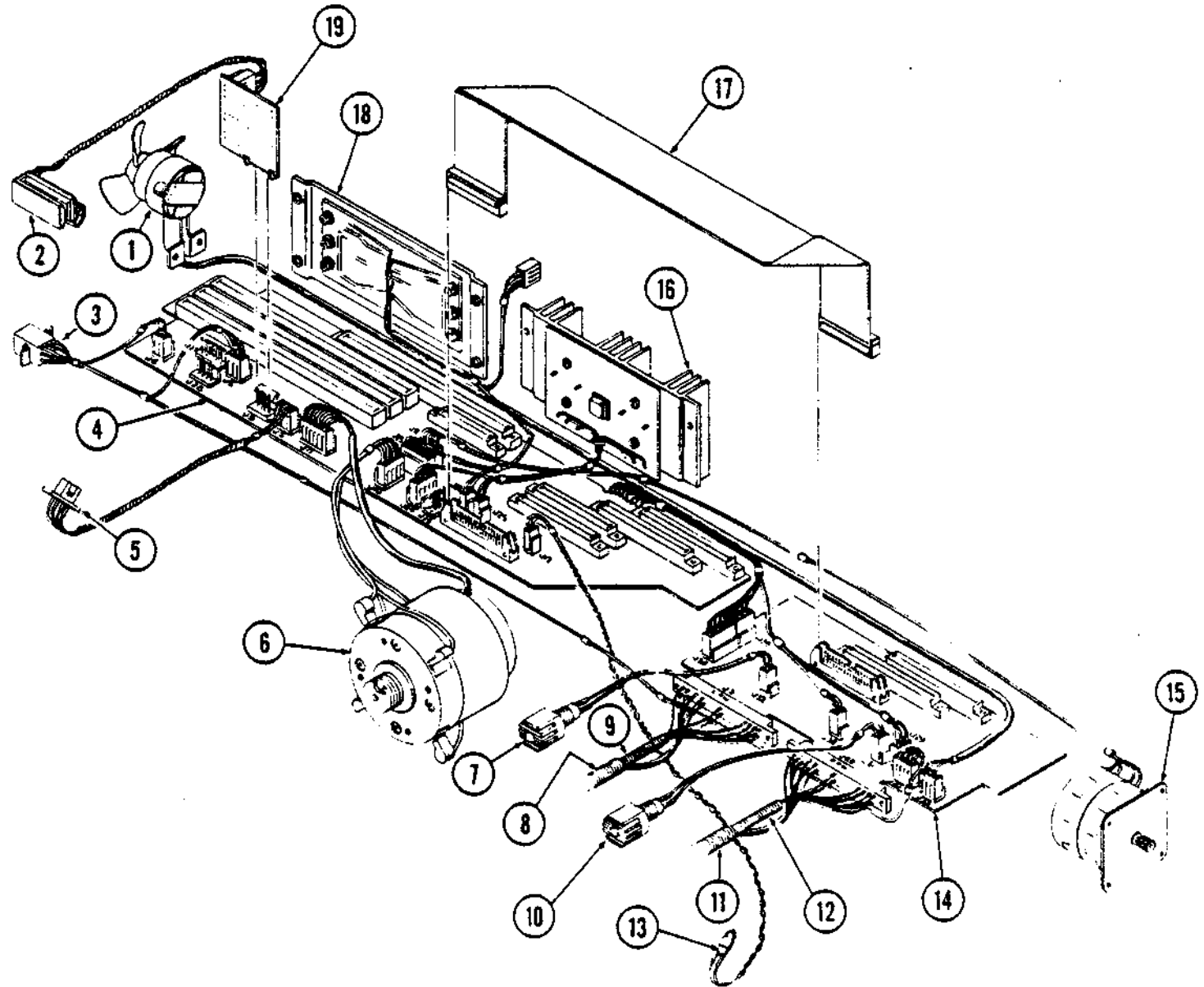
MOTHERBOARD CONNECTIONS (132 Column And WideTrack)



MOTHERBOARD CONNECTIONS
(132 Column And WideTrack)

- (1) 80736 Sensor (Rear Out Of Paper)
- (2) 99007-01 Harness Asy. W/Int. W/Lights, W/T.O.F., 132 Col
99007-03 Harness Asy. W/O Int. W/Lights, W/T.O.F., 132 Col
99007-04 Harness Asy. W/Int. W/O Lights, W/O T.O.F., 132 Col
99007-05 Harness Asy. W/O Int. W/Lights, W/O T.O.F., 132 Col
- (3) 99120 Photo Sensor
- (4) 80023-04 Motor/Encoder Asy. 132 Col
- (5) 80610-00 Resistor Asy.
- (6) 80613 Spring, Inner Carriage Conductors
- (7) 80614 Spring, Carriage Conductors
- (8) 99119-01 Switch Asy. Ribbon Adv. 132 Col
99119-02 Switch Asy. Ribbon Adv.
- (9) 80046-01 Paper Feed Motor Asy. 132 Col (Low Current)
80046-02 Paper Feed Motor Asy. 132 Col
80046-07 Paper Feed Motor Asy. (Low Current)
80046-08 Paper Feed Motor Asy.
- (10) 90602-00 Motherboard Asy. 132 Col
- (11) 80712 Carriage Driver Heatsink Asy. 132 Col
- (12) 90092-01 Paper/Printwheel Heatsink Asy.
- (13) 90592-01 PCB Rear Out Of Paper

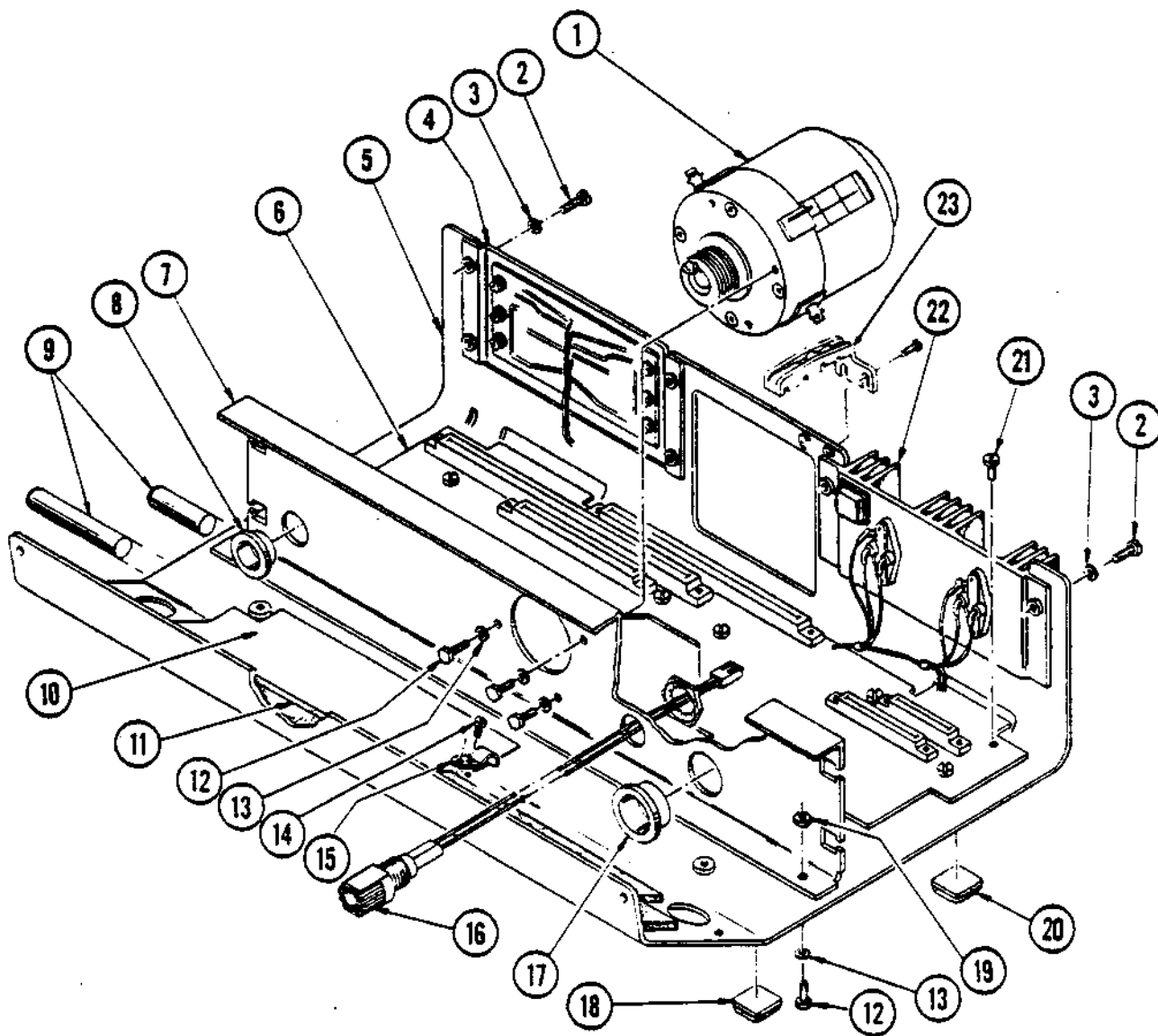
TWINTRACK MOTHER BOARD CONNECTIONS (RIGHT & LEFT)



**TWINTRACK MOTHER BOARD CONNECTIONS
(RIGHT & LEFT)**

- (1) 81815-02 Motor/Fan/Cable Asy.
- (2) 80736 Sensor/Rear Out of Paper
- (3) 99007-11 W/Int., W/Lights, W/T.O.F. Harness
99077-13 W/O Int., W/Lights, W/T.O.F. Harness
99077-14 W/Int., W/Lights, W/O T.O.F. Harness
99077-15 W/O Int., W/Lights, W/O T.O.F. Harness
- (4) 90692 Mother Board Asy., Left Side
- (5) 99120 Photo Sensor
- (6) 80023-04 Motor/Encoder Asy., Carriage 264 Col.
- (7) 80610-99 Resistor Asy.
- (8) 80614 Spring, Carriage Conductors Left Side
- (9) 80613 Spring, Inner Carriage Conductors Left Side
- (10) 80610-00 Resistor Asy.
- (11) 80614 Spring, Carriage Conductors Right Side
- (12) 80613 Spring, Inner Carriage Conductors Right Side
- (13) 99119-02 Switch Asy., Ribbon Adv. 264 Col.
- (14) 90682 Mother Board Asy., Right Side
- (15) 80046-08 Paper Feed Motor Asy.
- (16) 90752 Carriage Heatsink Asy.
- (17) 99114 Flat Cable Asy.
- (18) 90092-02 Paper/Printwheel Heatsink Asy.
- (19) 90592-01 P.C.B. Rear Out of Paper

STRUCTURE ASSEMBLY



STRUCTURE ASSEMBLY

- (1) 80023-01 Mtr./Enc. Asy. Car. S3/45.
- 80023-02 Mtr./Enc. Asy. Car. S3/35
- 80023-03 Mtr./Enc. Asy. Car. S3/55. S3X30, S3X40
- 80023-04 Mtr./Enc. Asy. Car. S3/WT
- 80023-05 Mtr./Enc. Asy. Car. S3/X30. S3/45. (128") Black
- 80023-06 Mtr./Enc. Asy. Car. S3/35 (128) Black
- 80023-07 Mtr./Enc. Asy. Car. S3/X40, S3/55 (128") Black
- 80023-09 Mtr./Enc. Asy. Car. S3/X30, S3/45 (144") Blue
- 80023-10 Mtr./Enc. Asy. Car. S3/35, (144) Blue
- 80023-11 Mtr./Enc. Asy. Car. S3/X40. S3/55 (144) Blue
- (2) 85006-05 Screw 6-32 X .312. Slot Pan Hd.
- (3) 85124-06 Washer #6, Helical Lock
- (4) 90092-02 Paper and Printwheel Heatsink Assembly
- (5) 80049-01 Pan Asy., Bot. 132 Col. Unslotted
- 80049-02 Pan Asy., Bot. 132 Col. Slotted
- (6) 90602-00 Motherboard S3 Including S3 WT
- (7) 80223 Motorbrace 132 Col.
- (8) 85157-02 Snap Bushing (SB-875-11) .687 I.D.
- (9) 80116-01 Shaft, Carriage Guide, 132 Col.
- (10) 80418 Shield, Bottom Pan, 132 Col.
- (11) 80449 Pad, Accoustical, Bottom Pan, 132 Col.
- (12) 85058-08 Screw 10-32 X .500, HEX HD.
- (13) 85124-10 Washer #10, Helical Lock
- (14) 85004-04 Screw 4-40 X .250, Slot Pan Hd.
- (15) 80246 Clamp, Carriage Cable
- (16) 80610-01 Resistor Assembly
- (17) 85157-03 Snap Busing (SB-1093-15) .937 I.D. Exc. S5
- (18) 85152-01 Foot, Rubber Front (SJ-5023) W/Covers
- 85152-02 Foot, Rubber Front (SJ-5025) W/O Covers
- (19) 85122-10 Nut 10-32, Hex
- (20) 85152-01 Foot, Rubber Rear (SJ-5023)
- (21) 85008-08 Screw 10-32 X .500, Slot Pan Hd.
- (22) 80712 Carriage Heatsink Assembly, All, Exc. TT
- 90752 Carriage Heatsink Assembly, TT
- (23) 81837 Clamp, P.C.B.

SECRET

CONFIDENTIAL

CONFIDENTIAL

CHAPTER VIII

SCHEMATICS

SCHEMATIC INDEX

DESCRIPTION	PAGE
Motherboard (90600)	8-2
Printed Circuit Board #1 (90610)	8-4
Printed Circuit Board #2 (90620)	8-8
Printed Circuit Board #3 (90630)	8-14
TwinTrack Motherboard - Right (90680)	8-18
TwinTrack Motherboard - Left (90690)	8-19
TwinTrack Coordinating Logic (90670)	8-21
Auxiliary Paper Drive Option (90700)	8-26
Paper Out Option (90590)	8-27

1111111111111111

1111111111111111
1111111111111111
1111111111111111

1111111111111111

1111111111111111

1111111111111111

1111111111111111

1111111111111111

1111111111111111

1111111111111111

1111111111111111

1111111111111111

1111111111111111



