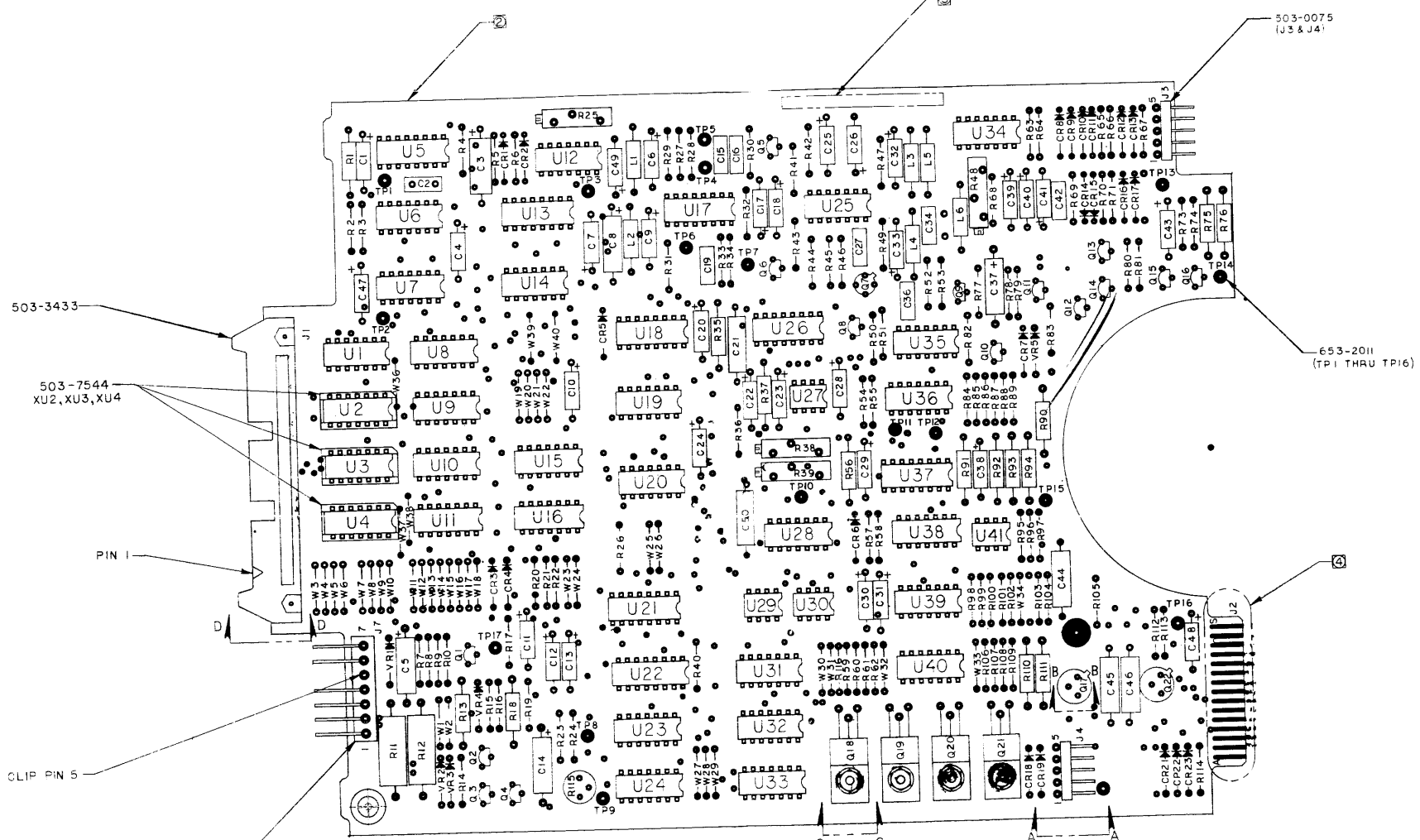


REVISIONS					
REV	DESCRIPTION	DATE	DR	CHK	APPR
A	ECN 300-118 FOR BOARD RELEASE	11/1/64	WJ	WJ	WJ
B	ECN 300-119 FOR BOARD RELEASE	11/1/64	WJ	WJ	WJ
C	ECN 30522	11/1/64	WJ	WJ	WJ
D	ECN 30523	11/1/64	WJ	WJ	WJ
E	ECN 3116	11/1/64	WJ	WJ	WJ
F	ECN 3266	11/1/64	WJ	WJ	WJ

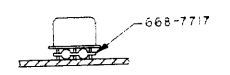


503-3433
503-7544
XU2, XU3, XU4

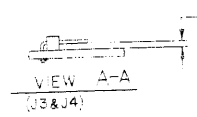
PIN 1
CLIP PIN 5
503-0107

503-0075
(J3 & J4)

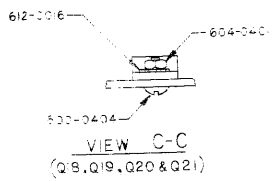
653-2011
(TP1 THRU TP16)



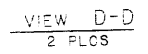
SECTION B-B
(Q17 & Q22)



VIEW A-A
(J3 & J4)



VIEW C-C
(Q8, Q9, Q20 & Q21)



VIEW D-D
(2 PLCS)

- ④ MASK AREAS SHOWN DURING FLOW SOLDER OPERATION.
 - ③ MARK PART NUMBER 600266, VERSION NUMBER AND VERSION ISSUE LETTER IN AREA SHOWN.
 - ② THIS ASSEMBLY SHALL BE MADE FROM PROCESS BOARD 600267-01 REV E AND SUBSEQUENT.
 - 1. ASSEMBLE PER STANDARD MANUFACTURING METHODS.
- NOTES: UNLESS OTHERWISE SPECIFIED

SCHEMATIC 600265
SPECIFICATION 600269
REF DWGS:

PART NO 600266- REV

SIGNATURES		DATE	PERTEC PERIPHERAL EQUIPMENT	
DR	WJ	11/1/64	TITLE	
CHK	WJ	11/1/64	PCBA FD	
DET	WJ	11/1/64	BASIC II A	
MATERIALS			SIZE	CODE IDENT NO
SEE/LM			E	600266
REVISIONS			DO NOT SCALE DWG	SHEET
NEXT ASSY			1	OF
APPLICATION			2	OF

600266