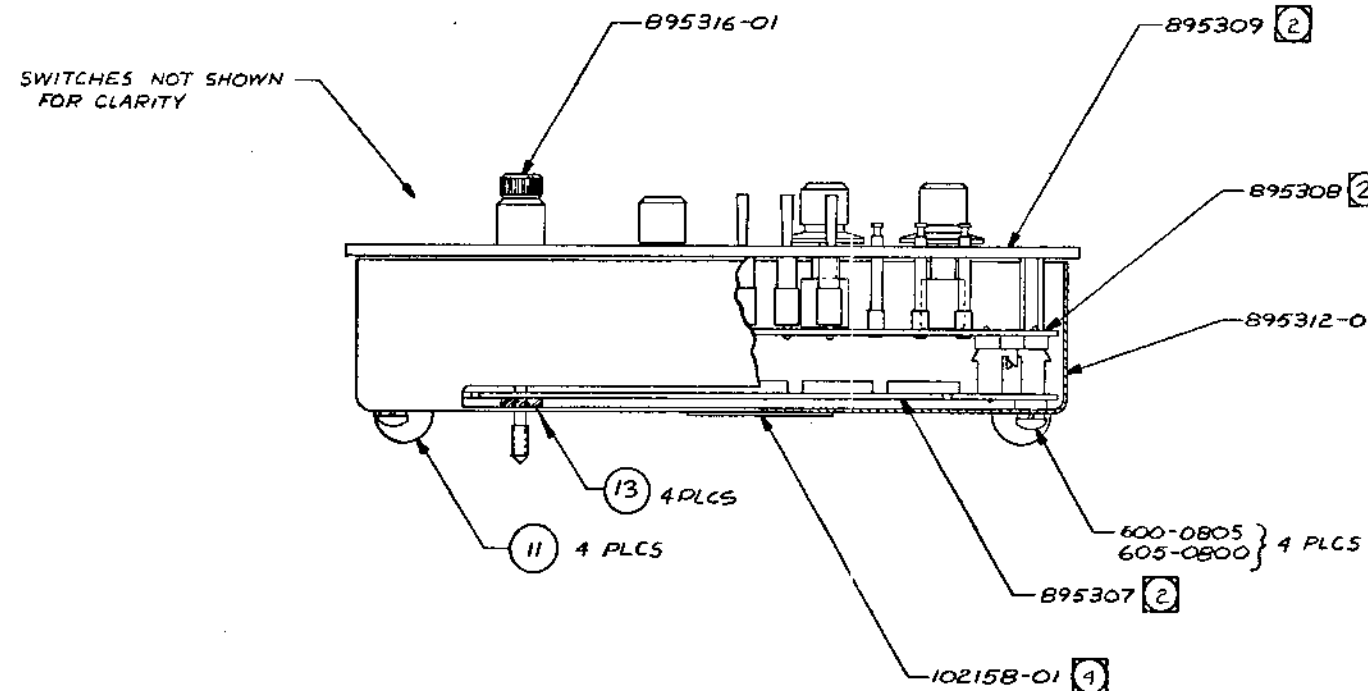
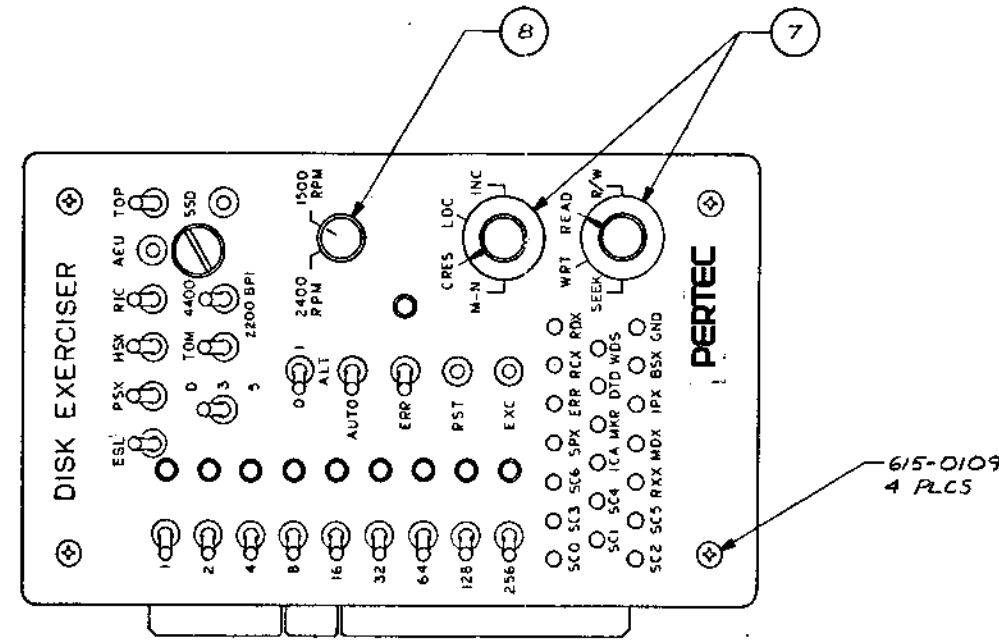


REVISIONS					
REV	DESCRIPTION	DATE	DR	CHK	APPR
A	ERN 10-KN TEST EQUIP RELEASE	1/24/72	JKL	JKL	JKL
B	ECN 11100	1/29/72	JKL	JKL	JKL



VERSION TABLE (2)

VERSION NO.	SWITCH PCBA	FRONT PANEL PART NO.	LOGIC PCBA PART NO.	OPERATING TEST PROCEDURE MANUAL
-01	895545-01	895318-01	895541-01	895321
-02	895545-01	895318-02	895541-02	895321

- (4) INSTALL I.D. LABEL (WITH THE REQUIRED MODEL NO., PART NO., & SERIAL NO.) IN THE APPROXIMATE LOCATION SHOWN.
3. (7) SYMBOL SIGNIFIES LM ITEM NUMBERS.
- (2) SEE VERSION TABLE FOR USAGE AND PART NO.
1. PACKAGE TO AVOID DAMAGE & IDENTIFY WITH P/N 895540 AND APPLICABLE VERSION NO. AND VERSION
- NOTES: UNLESS OTHERWISE SPECIFIED

QTY. REQD.	PART NO.	DESCRIPTION	MATERIAL	REF. DES	ITEM NO.
LIST OF MATERIAL					
The information herein is the property of PERTEC CORPORATION. No portion of this data shall be released, disclosed, used, or duplicated for processes or manufacturing purposes without specific written consent of PERTEC.		SIGNATURES	DATE	PERTEC PERIPHERAL EQUIPMENT	
UNLESS OTHERWISE SPECIFIED DIMENSIONS ARE IN INCHES		DR. J. W. ...	1/24/72	TITLE	
TOLERANCES: .0005 .001 .002 .005 .010 .020 .050 .100 .200 .500 1.000 2.000 5.000 10.000		ENGR. J. W. ...	12/21/71	D02	
BREAK ALL SHARP CORNERS APPROX. .010		PROJ. ENGR. ...	7/1/72	DISK EXERCISER TOP ASSY	
FINISH: SEE L M		MATL:	SEE L M	SIZE D	REV B
NEXT ASSY		APPLICATION		EQS IDENT NO.	DWG NO. 395540
				SCALE 1:1	SHEET 1 OF 1

305540

LIST OF MATERIAL

TITLE DO2 DISK
EXERCISER - TOP ASSY

PERTEC PERIPHERAL EQUIPMENT

LM 895540-01

REV B

CODE IDENT

SHEET 1 OF 1

ITEM NO. QTY RECD PART NUMBER

DESCRIPTION

CODE

REFERENCE

1 1 895312-01
2 1 895318-01
3 1 895316-01

CHASSIS
FRONT PANEL
CAPTIVE SCREW

4 2
5 1
6 1
7 1
8 1
9 4
10 4
11 4
12 4
13 4
14 4
15 1
16 1
17 1
18 1
19 1
20 1

KNOB, SKIATED, ROGAN P/N RB-67-0-SK-7
KNOB, ROGAN P/N RB-67-0-M-L
SCREW, PAN HD, NO. 8-32 X 5/16 LG
LOCK WASHER, SPRING, NO. 8
RUBBER BUMPER, 3M P/N S55027 (BLACK)
SCREW FLAT HD, 6-32 X 3/8 LG, 100° C/SINK (BLK)
WASHER, NYLON
I.D. LABEL

REVISION A B

LOGIC BD, PCBA
SWITCH BD, PCBA

FEB 16 1978

DATE 1/25/78 1/28/78

CODE A - WITH LM

ECN NO. 10-KN 11100

D - WITHOUT LM

CHECKED BY [Signature]

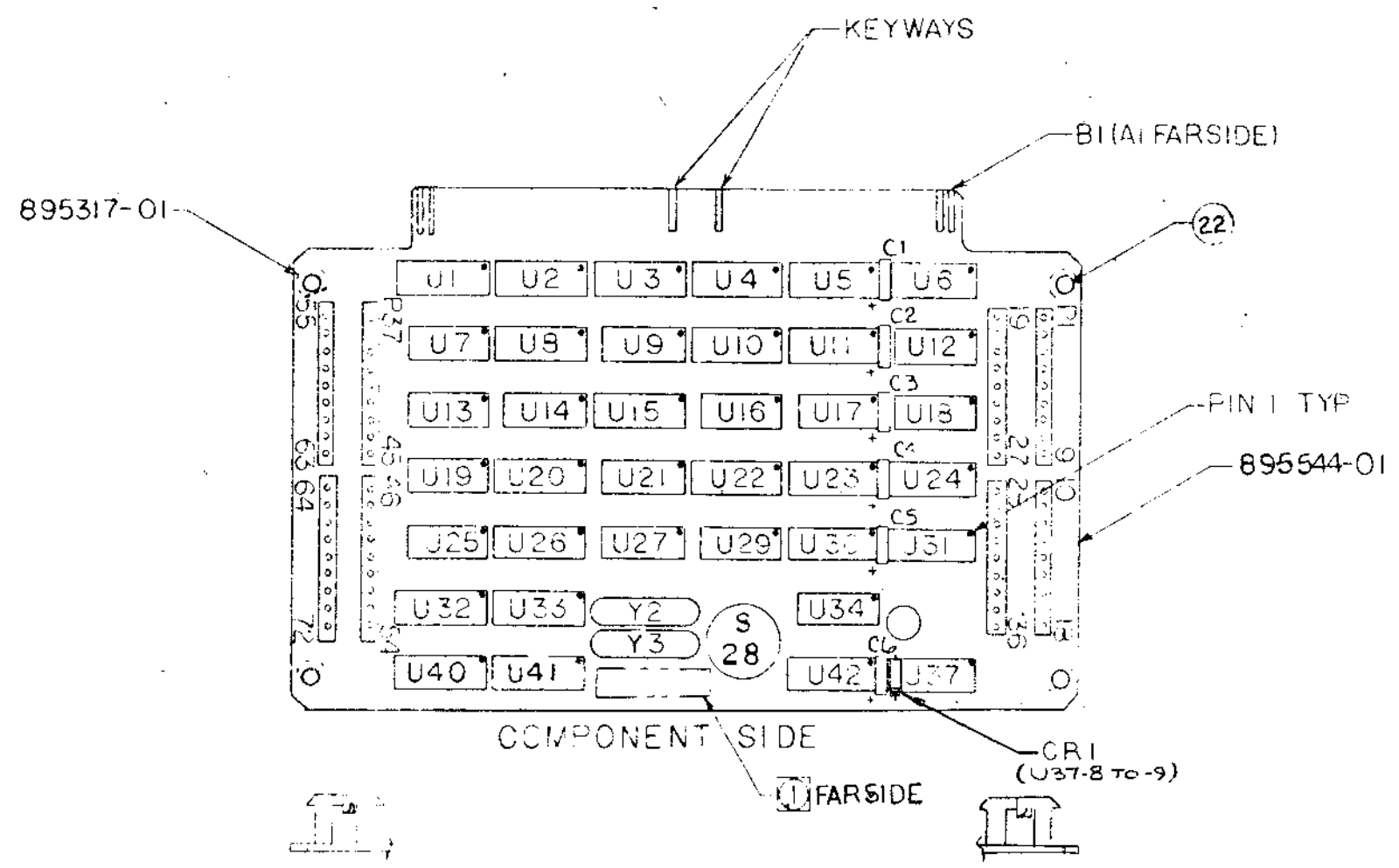
X - PREFERRED PART

APP BY [Signature]

S - SHIPPED SEP.

REVISIONS					
REV	DESCRIPTION	DATE	DR	CHK	APPR
A	ERN 10-KT TEST EQUIP RELEASE	7/1/78	TCM	MCL	RTT
B	ECN 11756	7/12/78	TCM	WJM	RTT

D
C
B
A




WIRELIST: 895542
 SCHEMATIC: 895543
 REFERENCE DOCUMENTS
 PART NO. 895541 - REV


3. ASSEMBLE PER STANDARD MANUFACTURING METHODS.
2. THIS ASSY SHALL BE MADE FROM PROCESS BD 895544-01A AND SUBSEQUENT.
1. MARK WITH PART NO. 895541 AND APPLICABLE VERSION NO. AND DATE OF ISSUE EITHER.
- NOTES: UNLESS OTHERWISE SPECIFIED

895540	D02
NEXT ASSY	LAST USED ON
APPLICATION	

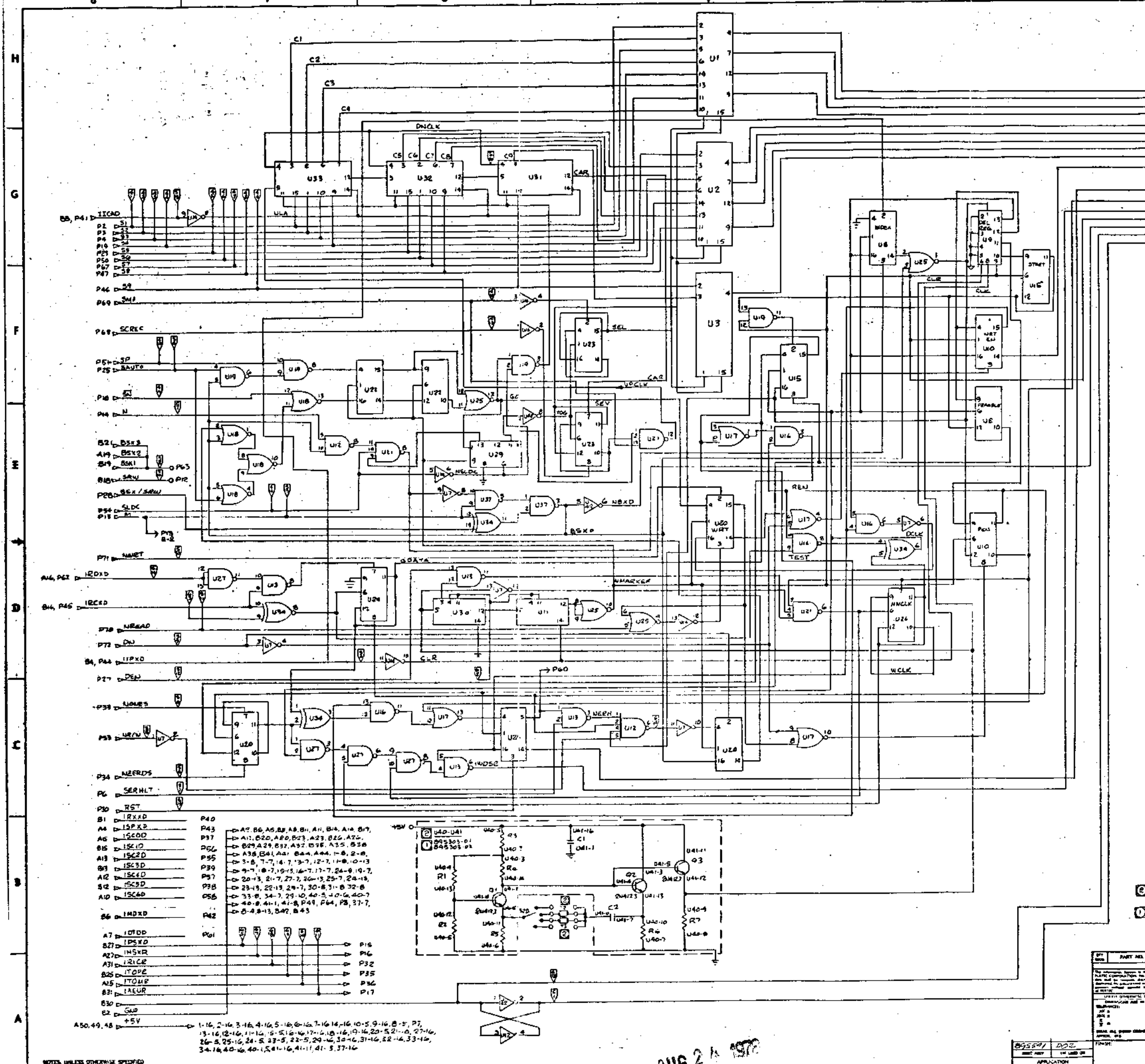
The information contained on this drawing is the property of PERTEC CORPORATION. It is to be used only for the purposes stated hereon. It is not to be released, copied, used, or distributed to any other person without the written consent of PERTEC CORPORATION.	SIGNATURES: <i>[Signature]</i> DATE: 7/1/78 <i>[Signature]</i> DATE: 7/1/78 <i>[Signature]</i> DATE: 7/1/78	PERTEC PERIPHERAL EQUIPMENT DIVISION TITLE: D02 DISK EXERCISER LOGIC PCB A
	MATERIAL: SEE LM	

LIST OF MATERIAL			 <small>a division of Pertec Computer Corporation</small>				LM 895541-01	REV A
TITLE DO2 DISK EXERCISER LOGIC PCBA							CODE IDENT	
ITEM NO.	QTY REQD	PART NUMBER	DESCRIPTION				CODE	REFERENCE
1	1	895303-01	OSCILLATOR, 2200BPI					U40, 41
2	1	895317-01	FASTENER, MOD					
3	RLF	895542	WIRE LIST					
4	REF	895543	SCHEMATIC					MAR 7 1978
5	1	895544-01	PROCESS BOARD					
6								
7	6	132-2752	CAPACITOR, 2.7UF, 35V, 10%					C1-6
8	1	300-4446	DIODE 1N4446					CR1
9								
10	2	700-0004	I.C., FLIP-FLOP, J-K, EDGE TRIGGERED					U20, 26
11	1	-4000	GATE, POS, NAND, QUAD, 2 INPUT					U27
12	3	-4158	SELECTOR, QUAD, TWO INPUT					U1, 2, 3
13	4	-7400	GATE, POS, NAND, QUAD, 2 INPUT					U13, 16, 19, 37
14	3	-7402	GATE, POS, NOR, QUAD, 2 INPUT					U17, 18, 25
15	3	-7404	INVERTER, HEX					U7, 14, 42
16	1	-7410	GATE, POS, NAND, TRIP, 3 INPUT					U21
17	5	-7419	COUNTER, SYNC, BINARY UP/DOWN					U11, 30-33
18	6	-7476	FLIP-FLOP, J-K, MASTER-SLAVE					U8, 10, 15, 22, 23, 24
19	1	-7486	GATE, EXCLUSIVE-OR, QUAD, 2 INPUT					U34
20	2	-7495	REGISTER, RIGHT-SHIFT-LEFT, SHIFT					U9, 29
21	1	700-3440	I.C. GATE, POWER, NAND, 4-INPUT					U12
REVISION		A					CODE	
DATE		2-15-78					A - WITH LM	
ECN NO.		10-KT					D - WITHOUT LM	
CHECKED BY		<i>ML</i>					X - PREFERRED PART	
APP BY		<i>ML</i>					S - SHIPPED SEP.	

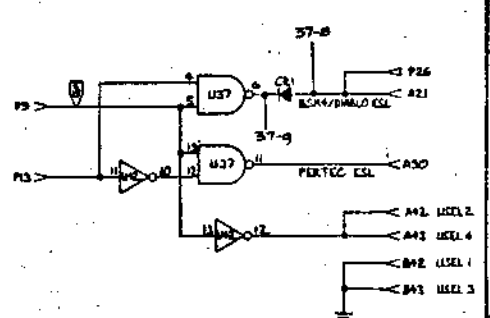
10-10198

LIST OF MATERIAL			 <small>a division of Pertec Computer Corporation</small>				LM 895541-01	REV A
TITLE DO2 DISK EXERCISER LOGIC PCBA							CODE IDENT	
ITEM NO.	QTY REQD	PART NUMBER	DESCRIPTION				CODE	REFERENCE
22	3	—	FASTENER, SWAGE PIN KFS2-832(POM)					U4-U6
23	3	898-1-RIK	RESISTOR, NETWORK (HELI POT)					P1-72
24	8	09-52-3093	CONNECTOR, 9 PIN STRIP MOLEX					Y2
25	1	—	CRYSTAL, 4.998 MHZ (BULEY ELEC.)					Y3
26	1	—	CRYSTAL, 3.124 MHZ (NORTHERN ENG)					
27	1	—	SWITCH, ROTARY, 6 POS. (HGB 6PG RCL2037)					S28

REVISIONS			
REV	DESCRIPTION	DATE	CHK. APPR.
A	DISK EXERCISER TEST EQUIPMENT RELEASE	7/27/72	WJL/ML
B	CONVERTED	7/28/72	WJL/ML



IC	DESCRIPTION	QTY
IC002	P20, A99	
IC001	P21, B99	
IC02R	P22, A97	
IC03R	P24, B97	
IC04R	P5, A96	
IC05R	P57, B96	
IC06R	P1, A94	
IC07R	P45, B94	
IC08R	P46, A93	
IC09R	B22	
IC10R	A22	
NE555	P29	
NOENEL	B04	
IWD5R	P05, A28	
ICASE	P69	
555RND	P18	
555RNC	P1	

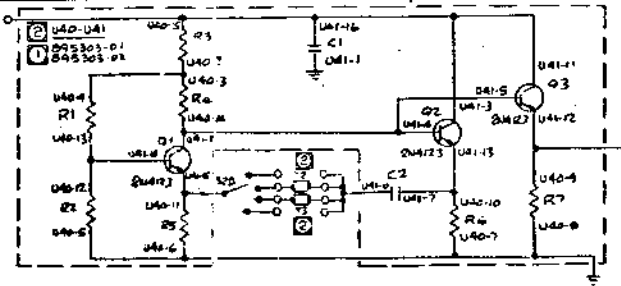


VERSION TABLE		
REV	DESCRIPTION	DATE
01	095503-01	095503-02
C1	2.7UF	2.7UF
C2	22PF	22PF
C3	220R	1K2R
R2,3	470R	560R
R4	1K2R	820R
R5	511R	820R
R6	560R	220R
R7	120R	120R
Q1,2,3	2N4125	2N4125
Y2	4.998 MHz	10 MHz
Y3	3.124 MHz	6.25 MHz

SEE VERSION TABLE FOR COMPONENT VALUES

REF ASSY NO. 095541
 DISK ASSY NO. 095503
 PROCESS 60 NO. 095544
 WIRE LIST NO. 095542

Pin	Signal	Pin	Signal
P40	IRXAD	P43	IRXAD
P41	ISPCD	P44	ISPCD
P42	ISPCD	P45	ISPCD
P43	ISPCD	P46	ISPCD
P44	ISPCD	P47	ISPCD
P45	ISPCD	P48	ISPCD
P46	ISPCD	P49	ISPCD
P47	ISPCD	P50	ISPCD
P48	ISPCD	P51	ISPCD
P49	ISPCD	P52	ISPCD
P50	ISPCD	P53	ISPCD
P51	ISPCD	P54	ISPCD
P52	ISPCD	P55	ISPCD
P53	ISPCD	P56	ISPCD
P54	ISPCD	P57	ISPCD
P55	ISPCD	P58	ISPCD
P56	ISPCD	P59	ISPCD
P57	ISPCD	P60	ISPCD
P58	ISPCD	P61	ISPCD
P59	ISPCD	P62	ISPCD
P60	ISPCD	P63	ISPCD
P61	ISPCD	P64	ISPCD
P62	ISPCD	P65	ISPCD
P63	ISPCD	P66	ISPCD
P64	ISPCD	P67	ISPCD
P65	ISPCD	P68	ISPCD
P66	ISPCD	P69	ISPCD
P67	ISPCD	P70	ISPCD
P68	ISPCD	P71	ISPCD
P69	ISPCD	P72	ISPCD
P70	ISPCD	P73	ISPCD
P71	ISPCD	P74	ISPCD
P72	ISPCD	P75	ISPCD
P73	ISPCD	P76	ISPCD
P74	ISPCD	P77	ISPCD
P75	ISPCD	P78	ISPCD
P76	ISPCD	P79	ISPCD
P77	ISPCD	P80	ISPCD
P78	ISPCD	P81	ISPCD
P79	ISPCD	P82	ISPCD
P80	ISPCD	P83	ISPCD
P81	ISPCD	P84	ISPCD
P82	ISPCD	P85	ISPCD
P83	ISPCD	P86	ISPCD
P84	ISPCD	P87	ISPCD
P85	ISPCD	P88	ISPCD
P86	ISPCD	P89	ISPCD
P87	ISPCD	P90	ISPCD
P88	ISPCD	P91	ISPCD
P89	ISPCD	P92	ISPCD
P90	ISPCD	P93	ISPCD
P91	ISPCD	P94	ISPCD
P92	ISPCD	P95	ISPCD
P93	ISPCD	P96	ISPCD
P94	ISPCD	P97	ISPCD
P95	ISPCD	P98	ISPCD
P96	ISPCD	P99	ISPCD
P97	ISPCD	P100	ISPCD



AUG 2 1972

REV	DATE	DESCRIPTION	APP'D	CHK'D
01	7/27/72	DISK EXERCISER SCHEMATIC LOGIC PCB A	WJL	ML

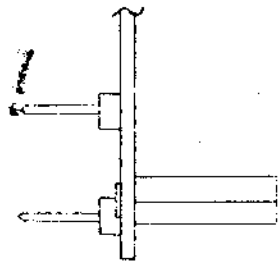
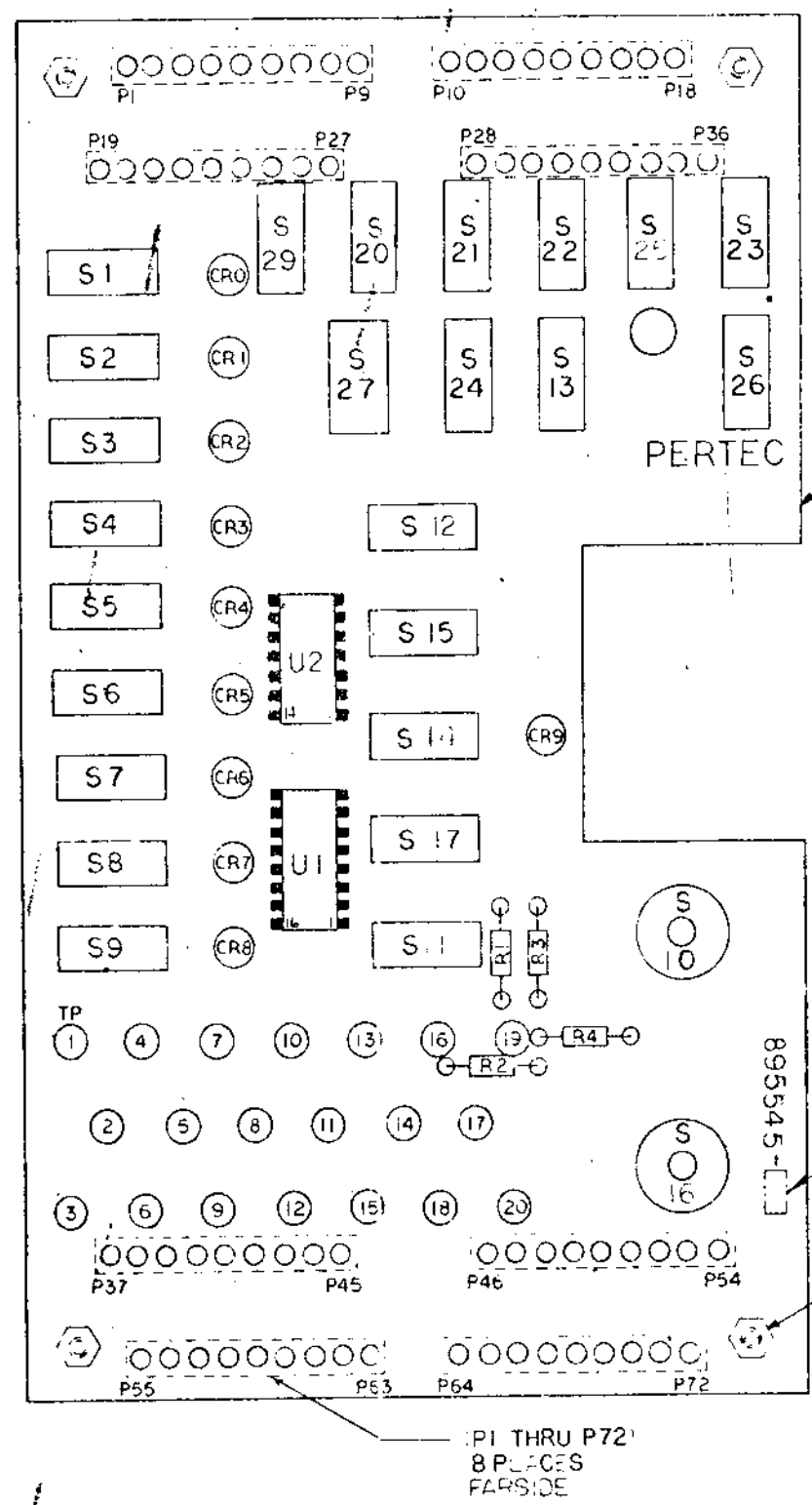
PERTEC
 A Division of Perkin-Elmer Corporation

DISK EXERCISER
 SCHEMATIC
 LOGIC PCB A

095543

NOTES UNLESS OTHERWISE SPECIFIED

REVISIONS					
REV	DESCRIPTION	DATE	DR	CHK	APPR
A	ERNJ10-KT TEST EQUIP RELEASE	3/1/79



SCHEMATIC: 895546
REF DRAWING

MAY 2 1979

- ASSEMBLE PER STANDARD MANUFACTURING METHODS.
- 17 SYMBOL SIGNIFIES 17 ITEM NUMBERS.
- MARK VERSION NO., AND VERSION ISSUE LETTER IN AREA INDICATED.
- THIS PCB TO BE MADE USING PROPOSED BOARD 895547-01 REV A AND SUBSEQUENT.

PART NO 895545 REV		PERTEC PERIPHERAL EQUIPMENT	
SIGNATURES		DATE	
TOLERANCES		ANGLES	
DRAFTING		DATE	
NEXT ASSY		DATE	
APPLICATION		DATE	
895540 002		895545	
REV A		REV A	

LIST OF MATERIAL

TITLE DO2 DISK
EXERCISER SW. PCB/A



a division of Perlec Computer Corporation

LM 895545-01

REV B

CODE IDENT

SHEET / OF /

ITEM NO.	QTY REQD	PART NUMBER	DESCRIPTION	CODE	REFERENCE
1	20	895269-01	TEST POINT		TP1-20
2	REF	895546	SCHEMATIC		
3	1	895547-01	PROCESS BOARD		
4					
5	2	100-2215	RESISTOR, 220 OHMS, 1/4W, 5%		R1,3
6	2	100-3315	RESISTOR, 330 OHMS, 1/4W, 5%		R2,4
7					
8	1	700-7410	I.C. GATE, POSITIVE HANDTEIP, 3INPUT		U2
9	10	5082-4460	LED (HEWLETT-PACKARD)		CR20-CR9
10	1	898-1-R1K	RESISTOR NETWORK (HELIPOD)		U1
11	18	7101	SWITCH, TOGGLE, 2 POS, (CEK)		S1-9,13-15,20-24,29
12	8	09-64-1091	CONNECTOR (MOLEX)		P1-72
13	1	7103	SWITCH, TOGGLE, 3 POS, (CEK)		S12
14	1	7211	SWITCH, TOGGLE, 3 POS, (CEK)		S27
15	4	8121	SWITCH, MOM, SPOT, (CEK)		S11,17,25,26
16	2	---	SWITCH, ROTARY RELIGB-6PC-7513		S10,16
17	4	---	STAUDOFF 9541B=A-0632 (AMATOM)		
REVISION	A	B			CODE
DATE	2-15-78	8-31-8			A -- WITH LM
ECN NO.	10-KT	11996			D -- WITHOUT LM
CHECKED BY	WEL	WUM			X -- PREFERRED PART
APP BY	WEL	WUM			S -- SHIPPED SEP.

MAY 3 1979