

SERVICE LETTER

DATE: November 15, 1974

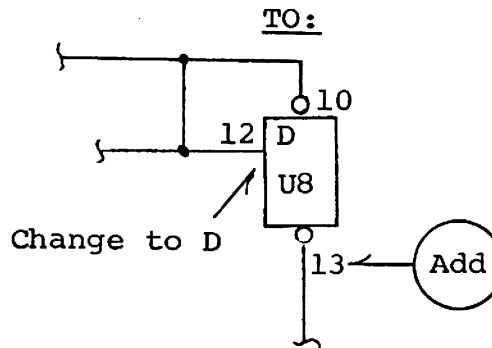
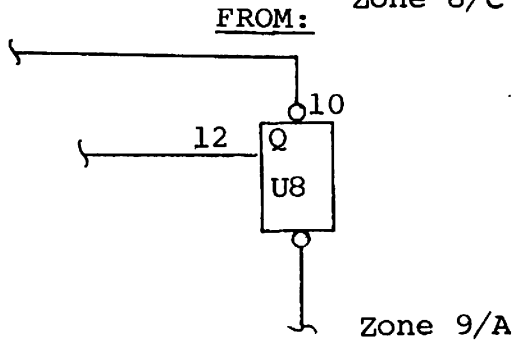
NUMBER: DK-3028
 (Customer Documentation)
 Ref: PIB DK-3020

SUBJECT: D3000 DIABLO COMPATIBLE - DRAWING ERRORS
 ON ONE SHOT SCHEMATIC 103720 REV. C and
 PCBA LAYOUT 103721 REV. C.

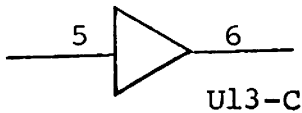
NOTE DOCUMENT CHANGE ONLY!!!!
 NO PHYSICAL CHANGES TO
 EQUIPMENT REQUIRED.

PURPOSE: This Service Letter provides the necessary information to update the latest one-shot documentation. Make schematic and PCBA layout corrections in your manuals in the following manner:

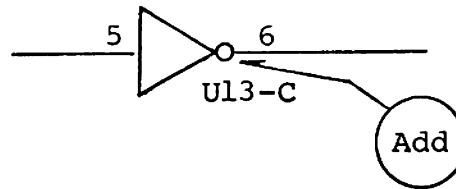
SCHEMATIC (103720)
 Zone 8/C



FROM:

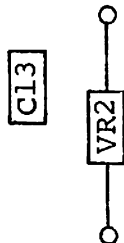


TO:

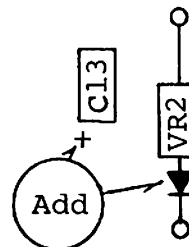


PCBA LAYOUT (103721)
 Zone 7/E

FROM:



TO:



Add polarity signs
 and diodes as shown

PERTEC

CUSTOMER SERVICE

PRODUCT SUPPORT

Page 1 of 2

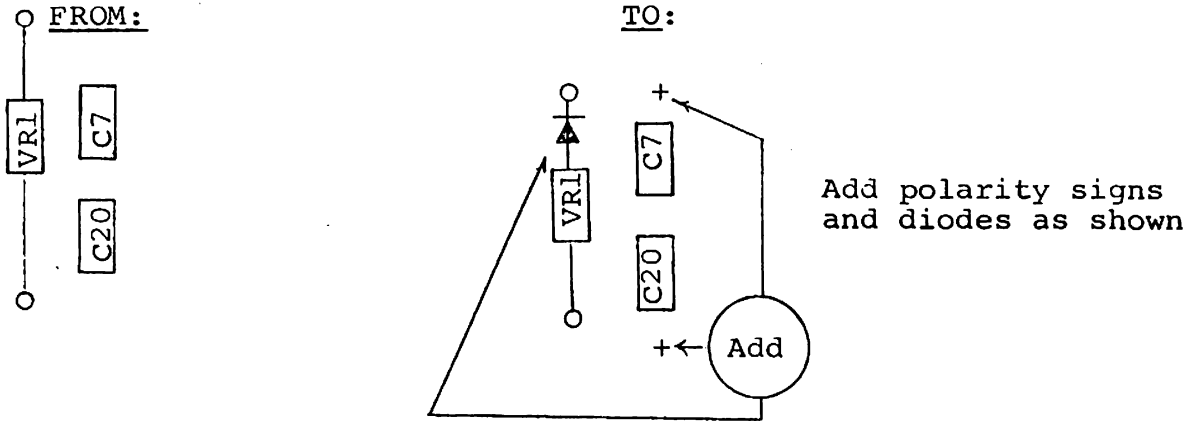
Distribution Code - 6399

SERVICE LETTER

DATE: November 15, 1974

NUMBER: DK-3028

PCBA LAYOUT (103721) CONT.
Zone 7/E



Change revision level of schematic and PCBA layout to C1.

Should any additional information or assistance be required, contact Product Support at your convenience.

Page 2 of 2
Distribution Code - 6399

PERTEC

CUSTOMER SERVICE PRODUCT SUPPORT