

SERVICE LETTER

DATE: May 17, 1974

NUMBER: DK-3023

SUBJECT: DIFFERENCE BETWEEN GLASS AND MYLAR RETICLES

By phasing in the new glass reticle assemblies, there are now two types of reticles in the field. Due to the difficulty of being unable to readily distinguish between the two when installed, all future glass reticle assemblies, for a period of ninety days, will be marked (Ref. Fig. 1). After ninety days an exact serial number cut off can be issued.

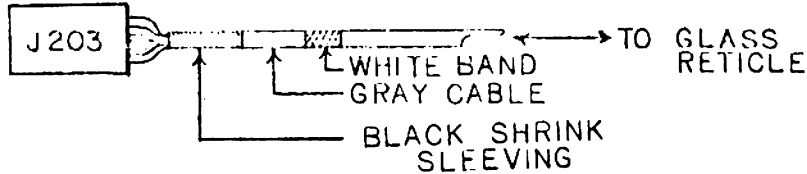


FIGURE 1

For existing units, the only apparent difference is the thickness of the reticle holder rim. (Ref. Figures 2 and 3 for details)

- Glass = .063
- Mylar = .050

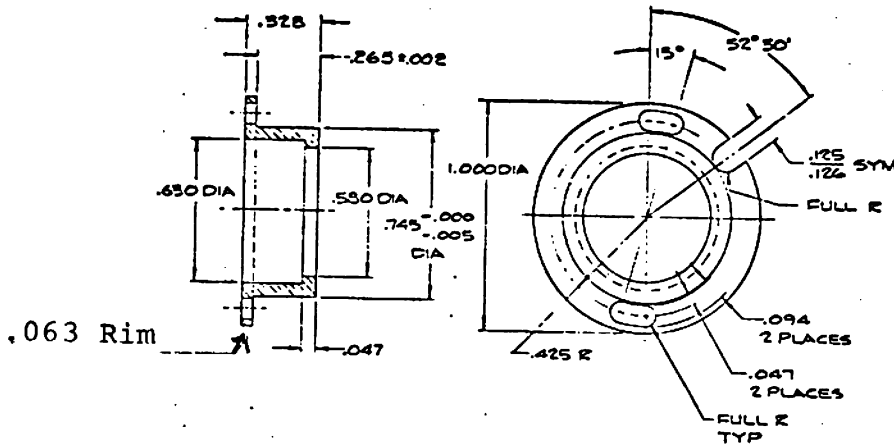


FIGURE 2
GLASS HOLDER (103675)

- .063 Glass Holder Rim
- -.050 Mylar Holder Rim
- .013 Difference

PERTEC

CUSTOMER SERVICE

PRODUCT SUPPORT

SERVICE LETTER

DATE: May 17, 1974

NUMBER: DK-3023

! OBSOLETE !

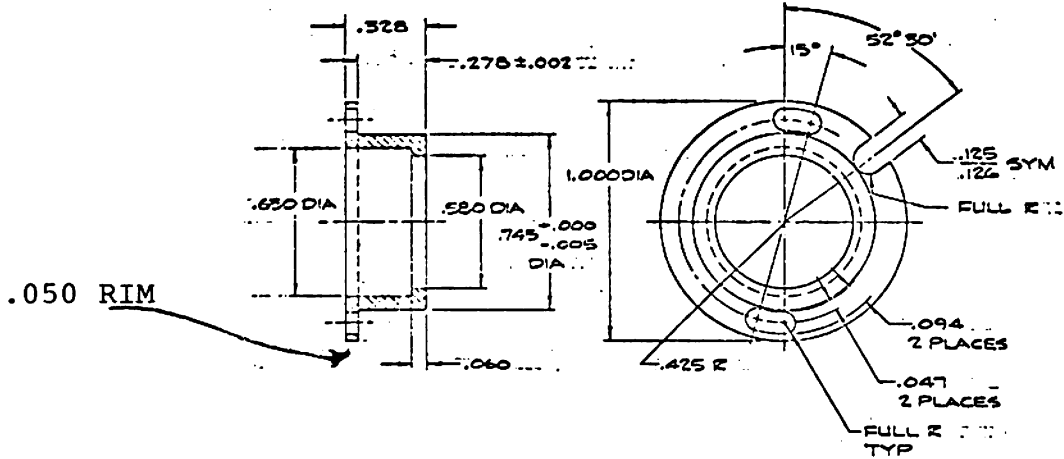
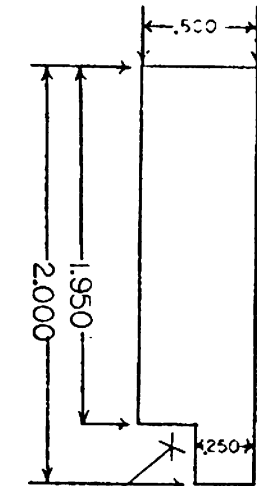


FIGURE 3
Mylar Holder (102869)

* * * SERVICE AID * * *

A small "GO NO GO" gauge can be made, if desired, from aluminum or plastic utilizing the following specifications. (See Figure 4). Use of this gauge is depicted in Figure 5.

GO NO GO
GAUGE



MYLAR GO
GLASS NO GO
GO - NO - GO
GAUGE

FIGURE 4

Gauge will slide over a Mylar Reticle holder rim. Gauge will not slide over a glass Reticle rim.

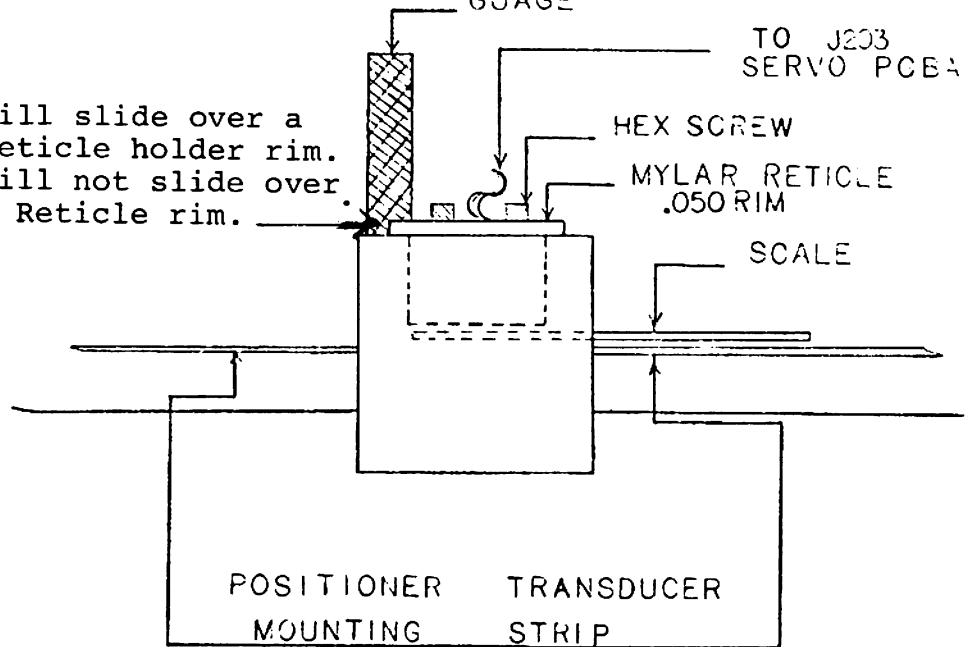


FIGURE 5

PERTEC