

PERIPHERAL EQUIPMENT DIVISION

TITLE INTERMITTANT BRUSH CYCLING - SC--907 LOGIC PCBA'S				PIB NO. DK3029
PRODUCT LINE:	TAPE DISK FORMATTER	EQUIPMENT CHANGED Logic PCBA 103689-01	MODEL SERIES AFFECTED D3000	EFFECTIVE DATE 2/17/75

CLASS OF BULLETIN:	ORDER PART KIT NO.	EFFECTIVITY
<input type="checkbox"/> IMPROVEMENT <input checked="" type="checkbox"/> RETROFIT ON FAILURE <input type="checkbox"/> RETROFIT RECOMMENDED <input type="checkbox"/> SERVICE INFORMATION ONLY	N/A	Top Load Units With SC907 Only

PURPOSE: For a number of months, there have been reportings of intermittent brush cycling problems on top load drives with special configuration SC907. Because we (Per-tec) could not duplicate this specific problem an extensive circuit analysis was performed to assure the credibility of the brush circuitry. Results were positive in that the circuitry appears to be very solid with plenty of margin, however, to insure the brushes cannot cycle except on up sequence this wiring change has been implemented on all units with Special Configuration, No. 907.

SYMPTOMS: Brushes cycling in the "READY" condition.
 Brushes cycling in the "SAFE" condition.
 Brushes cycling during down sequence.

PARTS

REQUIRED: Approximately 3 feet of insulated 30 AWG wire.

INSTALLATION

PROCEDURE: On Logic PCBA (103689)

- 1.0 Cut trace on circuit side to U264 pin 5.
- 2.0 Add the following jumpers--
 - 2.1 U264-5 to U448-2
 - 2.2 U448-1 to U446-11
 - 2.3 U445-3 to U444-8
 - 2.4 U444-8 to U444-10
 - 2.5 U444-9 to U364-4
 - 2.6 U444-11 to U365-10

ADJUSTMENTS:

None

TEST PROCEDURES: One Hour.

REVISION LEVELS: Make following Rev changes

	<u>From</u>	<u>To</u>
Schematic	103688	Rev C
PCBA	103689	Rev B
Logic PCBA	LM103689-XX	Rev A
		Rev D
		Rev C
		Rev B

Should Additional Information Be Required — Contact

PERTEC

PERIPHERAL EQUIPMENT DIVISION
 9600 Irondale Avenue, Chatsworth, California 91311
 Phone (213) 882-0030 / TWX (910) 494-2093
 ATTENTION: PRODUCT SUPPORT MANAGER

Distribution Code - 6318

TITLE INTERMITTANT BRUSH CYCLING - SC--907 LOGIC PCBA'S

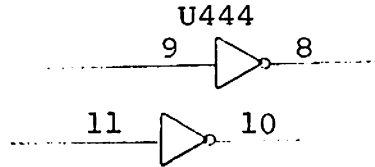
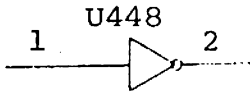
PIB NO.
DK3029

DRAWING CHANGES:

Schematic 103688 Sheet 1 (Spare Logic Elements)

Zone 15/D & F

Delete at:

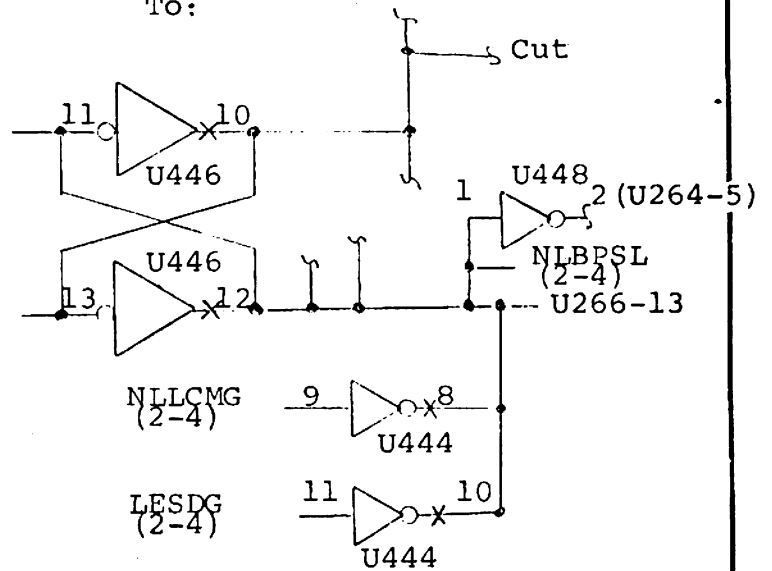
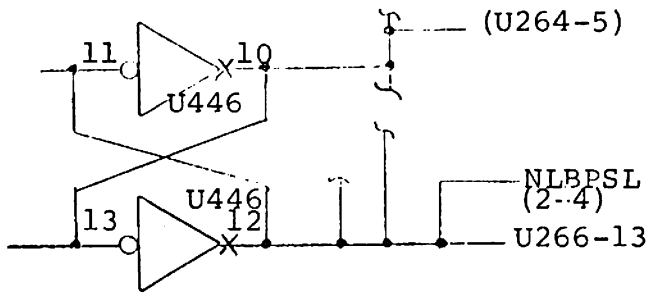


Schematic 103688 Sheet 2

Zone 16/17D

From:

To:

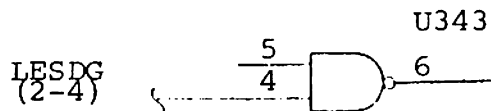
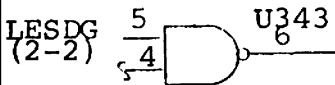


Schematic 103688 Sheet 3

Zone 3/G

From:

To:



Zone 4/5, E thru H

