

TITLE HIGH RELIABILITY THYRISTOR (TRIAC)			PIB NO. DK- 3005
PRODUCT LINE:	TAPE DISK FORMATTER <input checked="" type="checkbox"/>	EQUIPMENT CHANGED MCB (Motor Control 102826-XX Ed.)	MODEL SERIES AFFECTED D3000
			EFFECTIVE DATE 11-5-73

CLASS OF BULLETIN:	ORDER PART KIT NO.	EFFECTIVITY
<input checked="" type="checkbox"/> IMPROVEMENT	N/A	ALL REV. C MOTOR CONTROL BOARDS AND LOWER
<input type="checkbox"/> RETROFIT ON FAILURE		
<input type="checkbox"/> RETROFIT RECOMMENDED		
<input type="checkbox"/> INFORMATION ONLY		
<input type="checkbox"/>		

PURPOSE: Through research a more reliable motor triac has been tested and found to have better electronic qualities than the present one in use. Since the new triac is so much more reliable we are deleting from stock the present triac (part number 205-0106). The new triac will be stocked as part number 205-4010. The deletion and restoring should be complete in approximately 90 days.

SYMPTOMS: If units in the field are observed to have the following symptoms, the motor control board triac may be defective.

- Motor will not start.
- Motor creeps.
- Motor starts when off/on switch pressed.
- Intermittent speed errors (LDSEG).

PARTS REQUIRED TO IMPROVE RELIABILITY:

<u>Vendor</u>	<u>Part Name</u>	<u>Part No.</u>	<u>Price</u>
Pertec	Triac	205-4010	5.50
Pertec	Washer (insulating)	668-0001	Included
Pertec	Washer (shouldered)	612-1006	Included
Pertec	Nut w/lockwasher	604-2400	Included
Pertec	Screw-pan head	600-0406	Included
G.E.	Triac	SC146D	Equiv. to 205-4010
E.C.C.	Triac	Q4010R4	Equiv. to 205-4010
Dow Corning 360 Silicon Heat Sink Compound (Must be purchased locally)			

Should Additional Information Be Required — Contact

Distribution Code - 6318

PERTEC

PERIPHERAL EQUIPMENT DIVISION
9600 Irondale Avenue, Chatsworth, California 91311
Phone (213) 882-0030 / TWX (910) 494-2093
ATTENTION: PRODUCT SUPPORT MANAGER
PERTEC 90128(11)

TITLE HIGH RELIABILITY THYRISTOR (TRIAC)

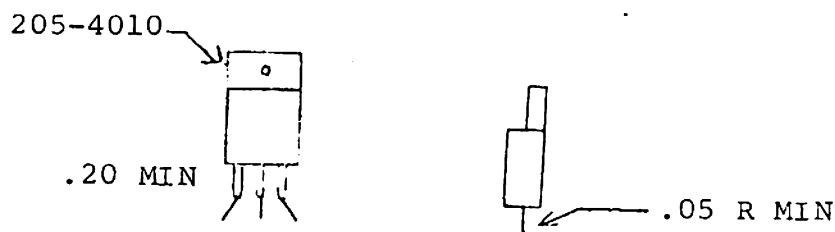
PIB NO.
DK- 3005

SPECIAL TOOLS: NONE Required

INSTALLATION
INSTRUCTIONS:

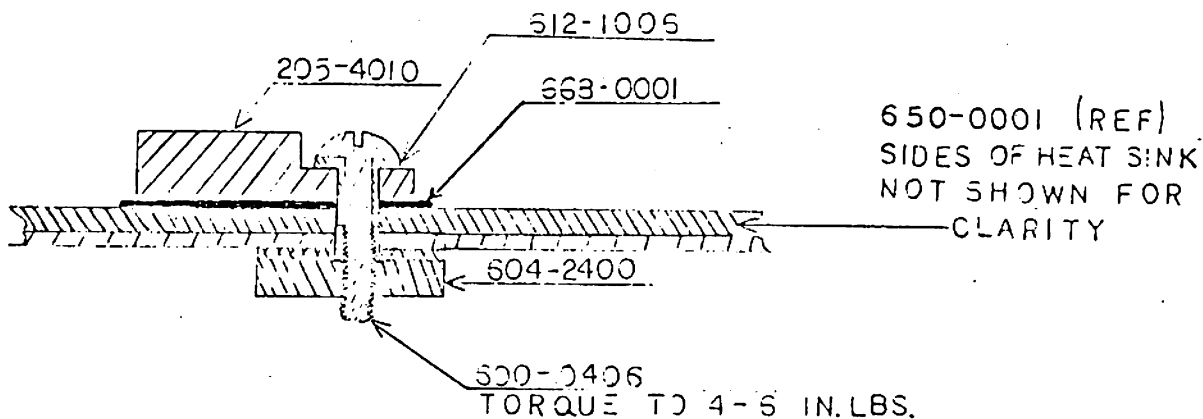
The following rework instructions are provided to document the process by which the 205-4010 configuration triac is to be modified to facilitate its being used as a replacement part for the presently used MAC10-6 (205-0106). These instructions specify how to mount the triac (205-4010) on the old configuration artwork process boards (Rev. C and prior) for purposes of repair and for field replacement only.

The lead to lead spacing of the (new) triac, 205-4010, is narrower than the original triac (205-0106). The two outside leads of the new part shall be bent outward slightly to attain the proper lead spacing as shown below:



When mounting the 205-4010 triac to the process board, use the hardware configuration shown.

DETAIL "A"



TITLE HIGH RELIABILITY THYRISTOR (TRIAC)

PIB NO.
DK-3005

INSTALLATION INSTRUCTIONS: Apply 360 silicon heat sink compound to triac (90% min. coverage) and to mounting surface before installation.
(Cont.)

NOTE: No modification to the existing applicable process board is required for this rework.

If new hardware is not available, use existing hardware deleting the #6 flat washer (606-0600).

TEST PROCEDURE: After installation check for normal operation, no special test is required.

DRAWING CHANGES ARE AS FOLLOWS:

102825 Table I From: SCR1 205-0106
To: SCR1 205-4010

102826 Zone 5D Delete: 600-0606
604-0600
606-0600
(Torque to 8 to 12 in. lbs.)

Zone 5D Add: See Detail "A" for hardware Stack Up.

Zone 5, 4D
Delete: (Use lock washer & mica washer supplied with 205-0106).
Add: View, Detail "A" to face of drawing.

102826 Revise PCBA to reflect change on process board 102827.

Change Note 4 From: REV. C
To: REV. D

TIME REQUIRED: Approximately one hour.