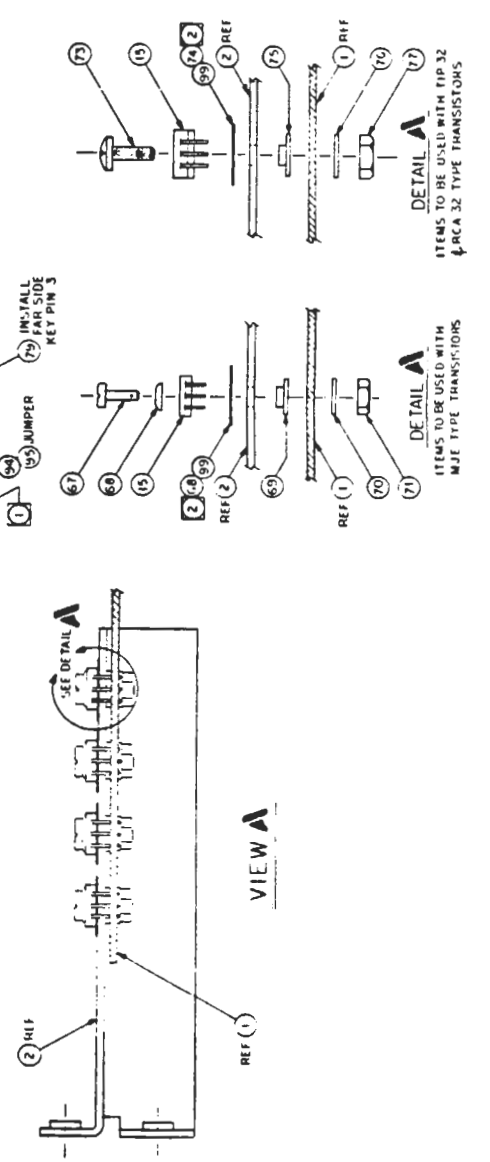
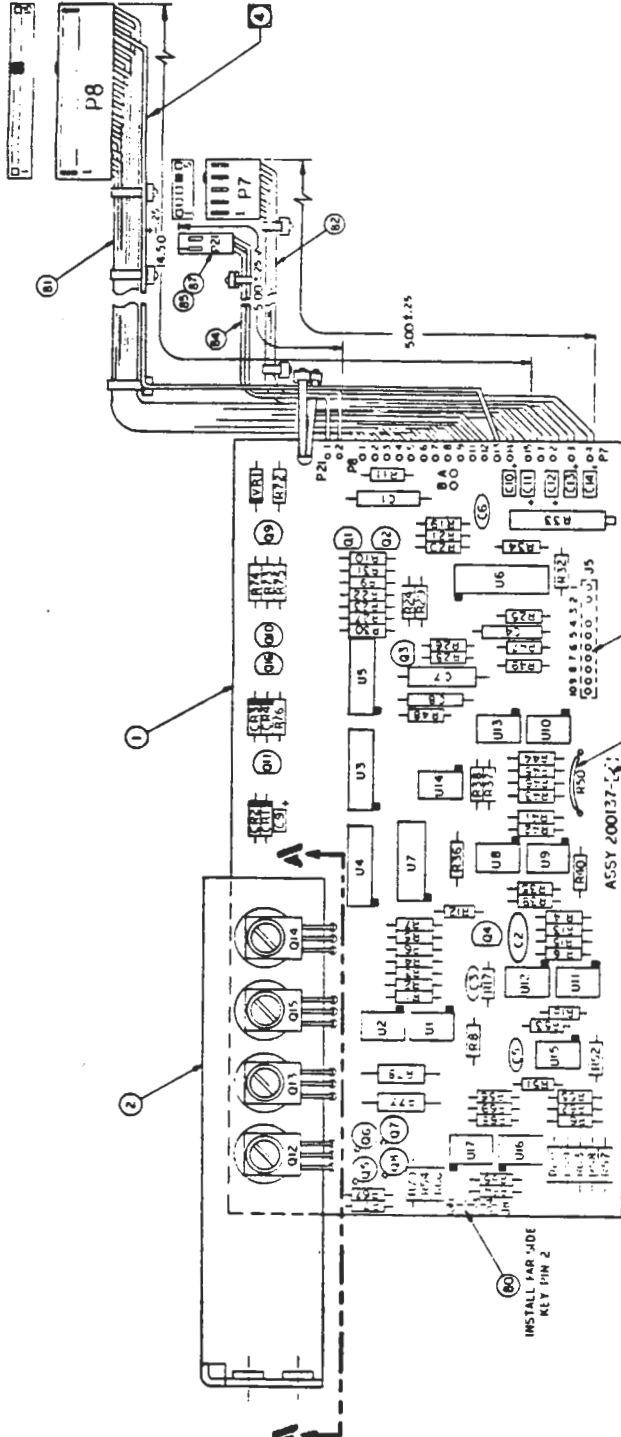


REV	REVISIONS	200137 F
A	ENGINE REL	
B	APPLIED JUMPER POINT A & B	
C	REVISIONS TO PINS 3, 11, 15	
D	DEC ECO 229	
E	FCO 241	
F	ECO 275	



- 1 WIDE TO P8 IS TO BE LEFT OUT OF BUNDLE.
- 2 SCHEMATIC REF 200136.
- 3 APPLY SILICON GREASE ON BOTH SIDES OF AREA IN U1, U11.
- 4 MARK REF DESIGNATIONS OR REVISION LEVEL IN HIGH BLACK/WHITE CHARACTERS IN APPROX AREA SHOWN UNLESS OTHERWISE SPECIFIED.

PERSCI, INC.

PERSCI
200137 F

REVISIONS
200137 F

DATE
11/11/77

BY
L. J. / 277

DESCRIPTION
MOUNT. PCB. POSITIONER SERVO

M/L