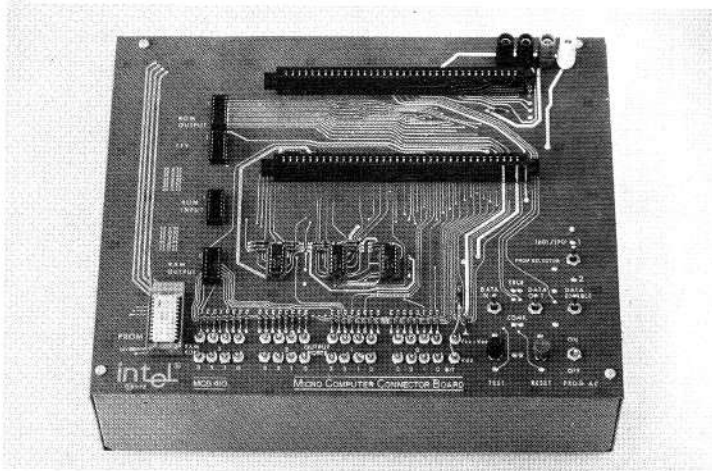


MCB4-10 System Interconnect and Control Module for SIM4-01

This module provides the complete interconnection between the SIM4-01 and the MP7-03. In addition to the connectors for both boards, there are LED data displays of each microcomputer output port, control switches, the 50 Vrms transformers, and a socket for the PROM being programmed. Plug-in connectors for each input and output port are provided. The SIM4-01 when used alone with the MCB4-10 is a complete microcomputer (except for power supplies).



MCB4-20 System Interconnect and Control Module for SIM4-02

This module provides the complete interconnection between the SIM4-02 and the MP7-03. This total package may be used for both a PROM programmer and a microcomputer developmental system. The MCB4-20 has the same basic features as the MCB4-10, and in addition, it provides a socket which can be used for duplication.

