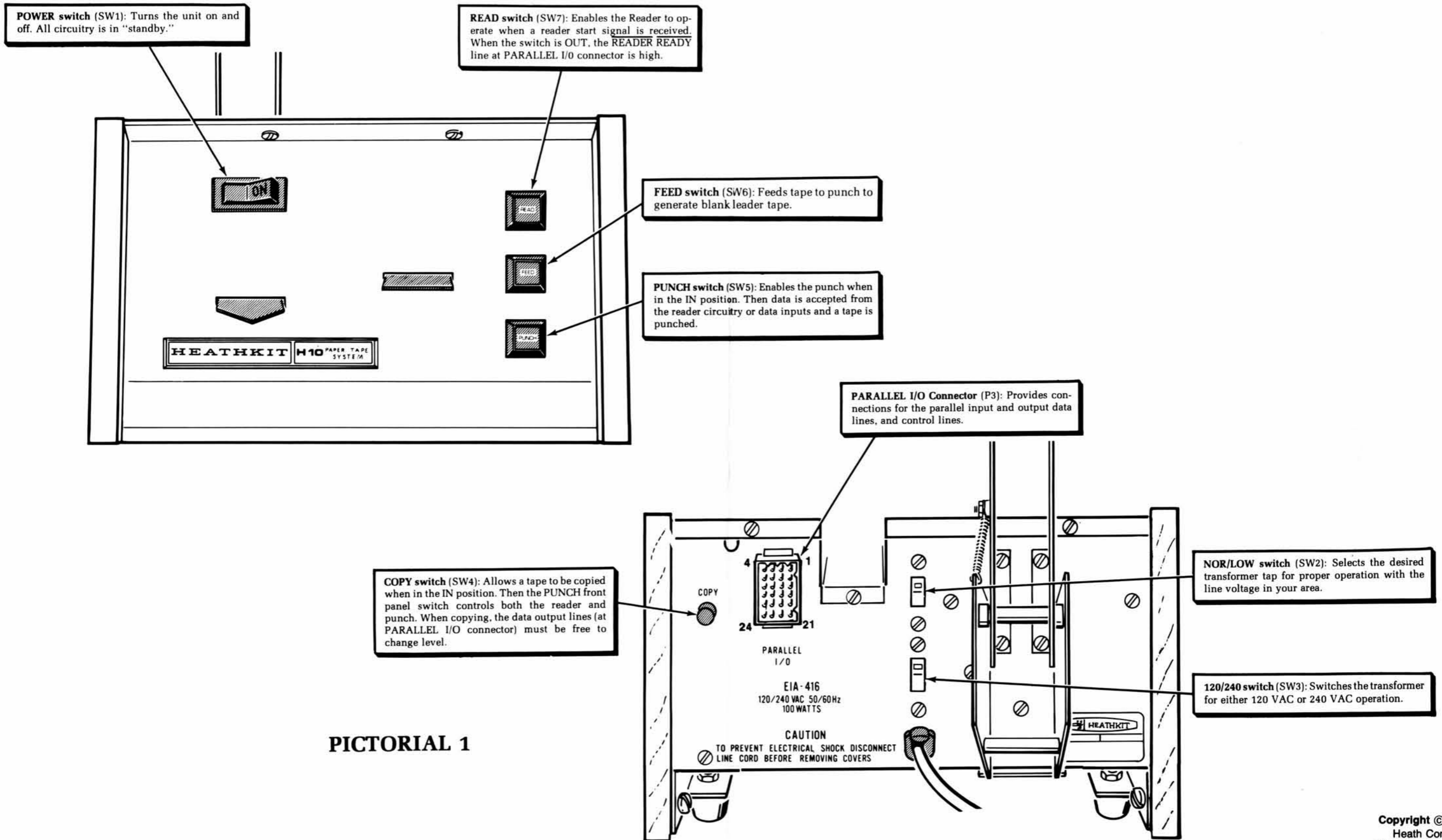
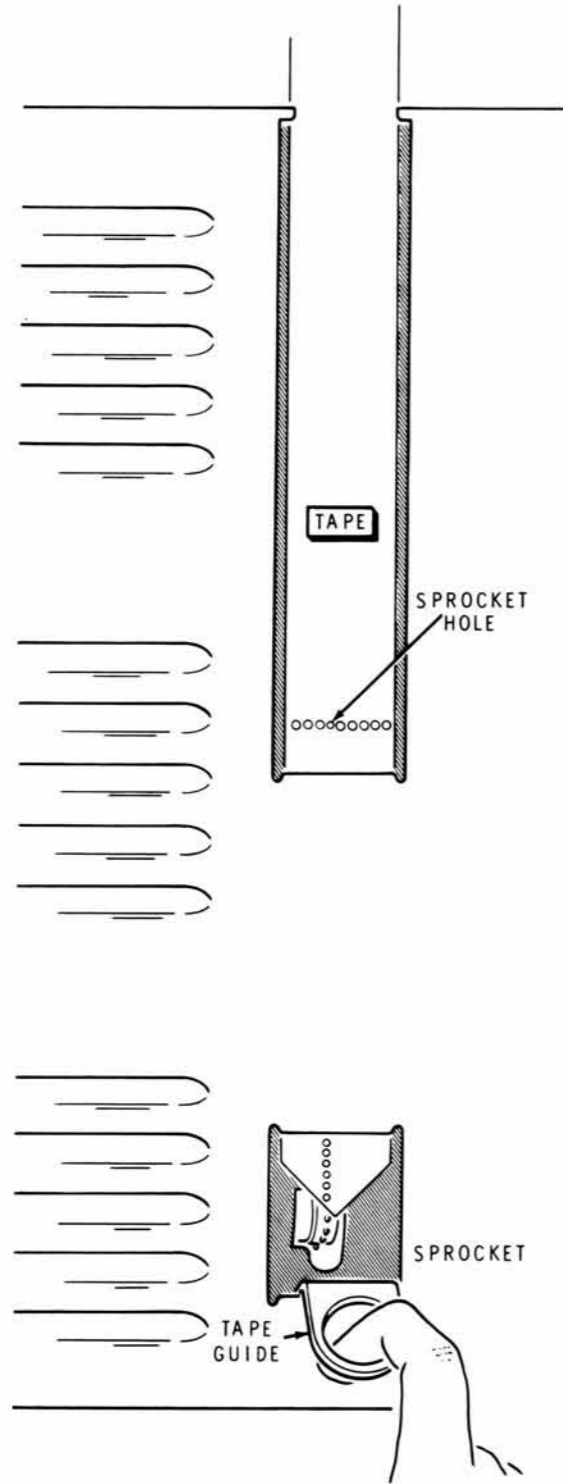


# ILLUSTRATION BOOKLET

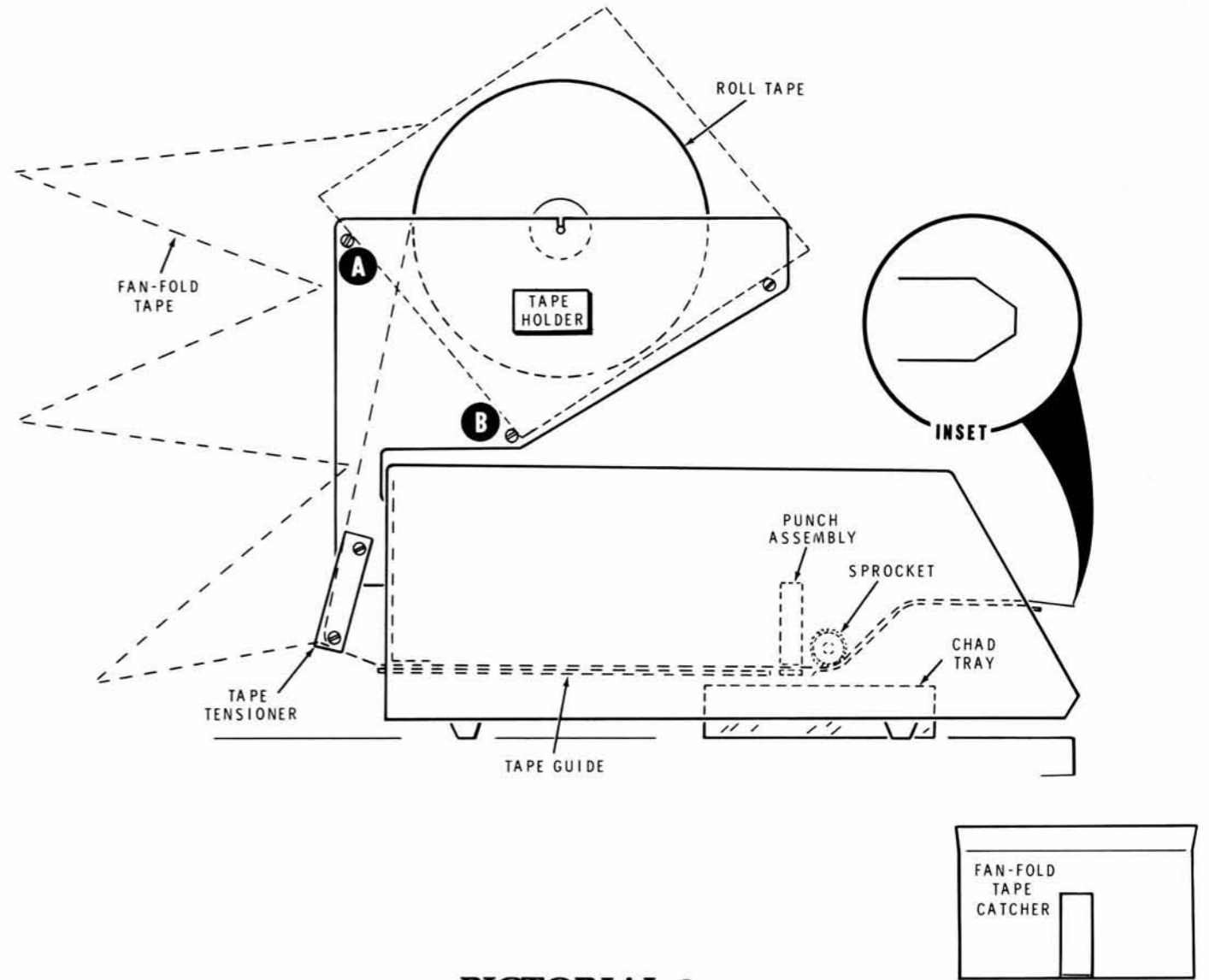
Part of 595-2020



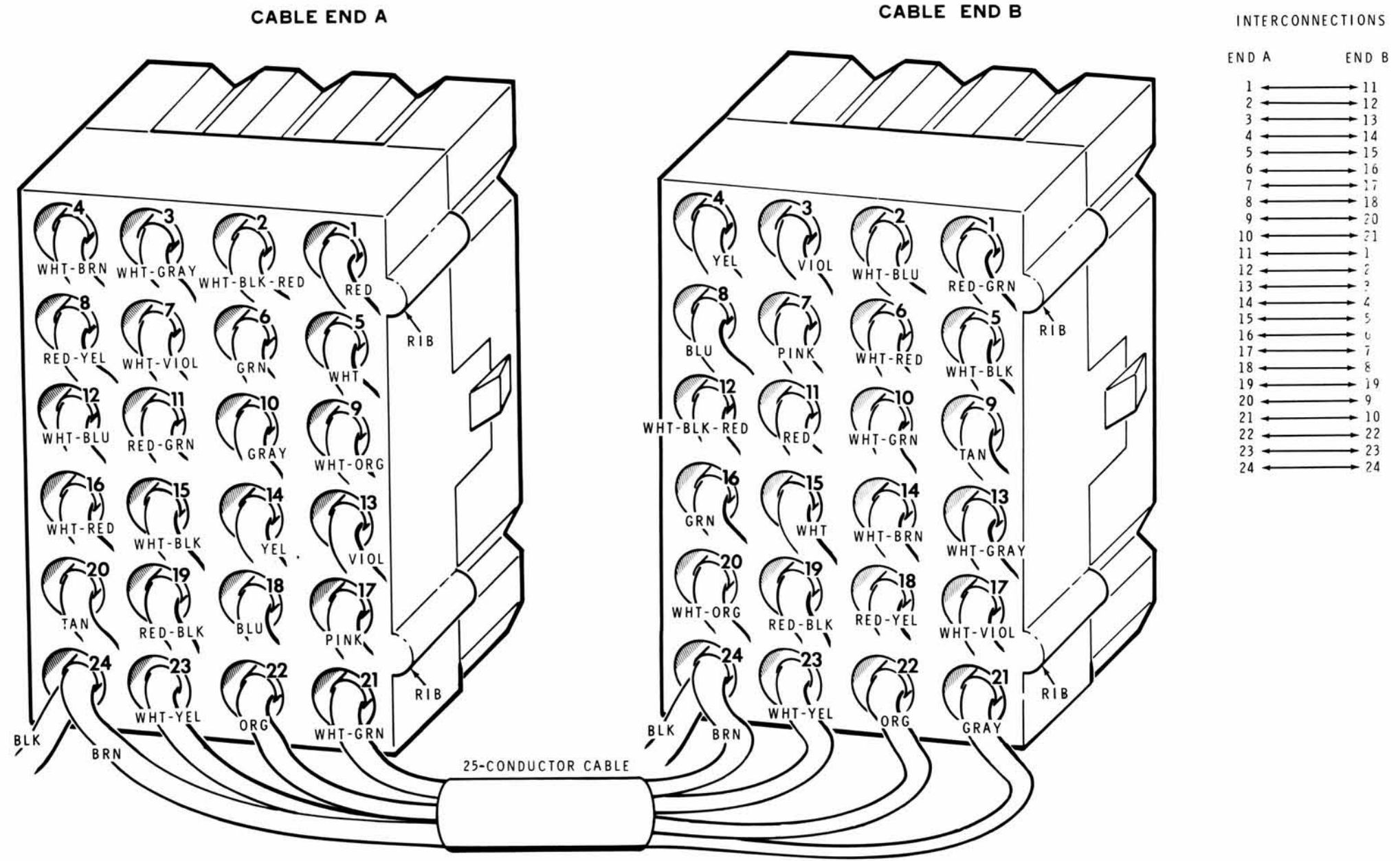
PICTORIAL 1



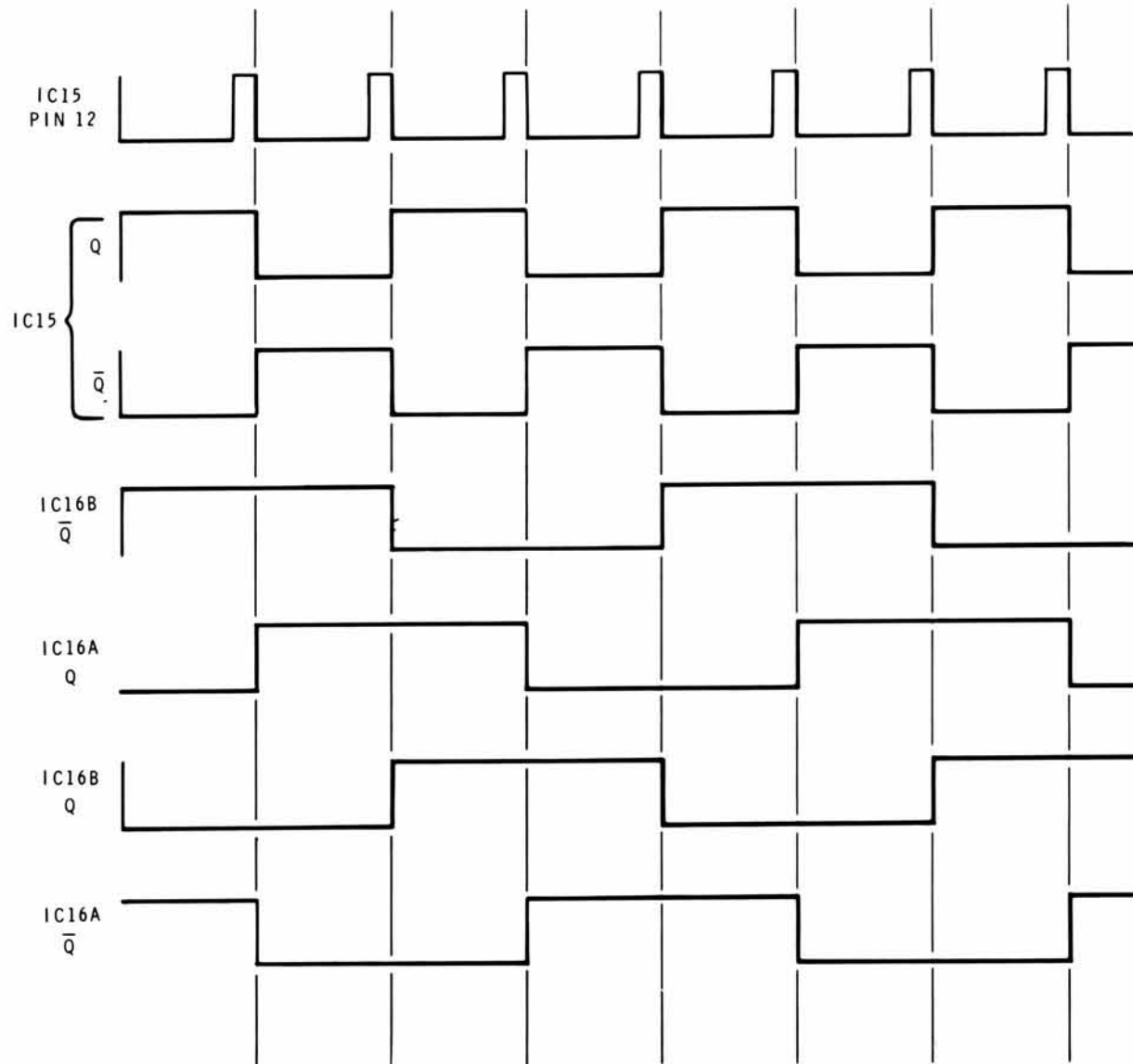
PICTORIAL 2



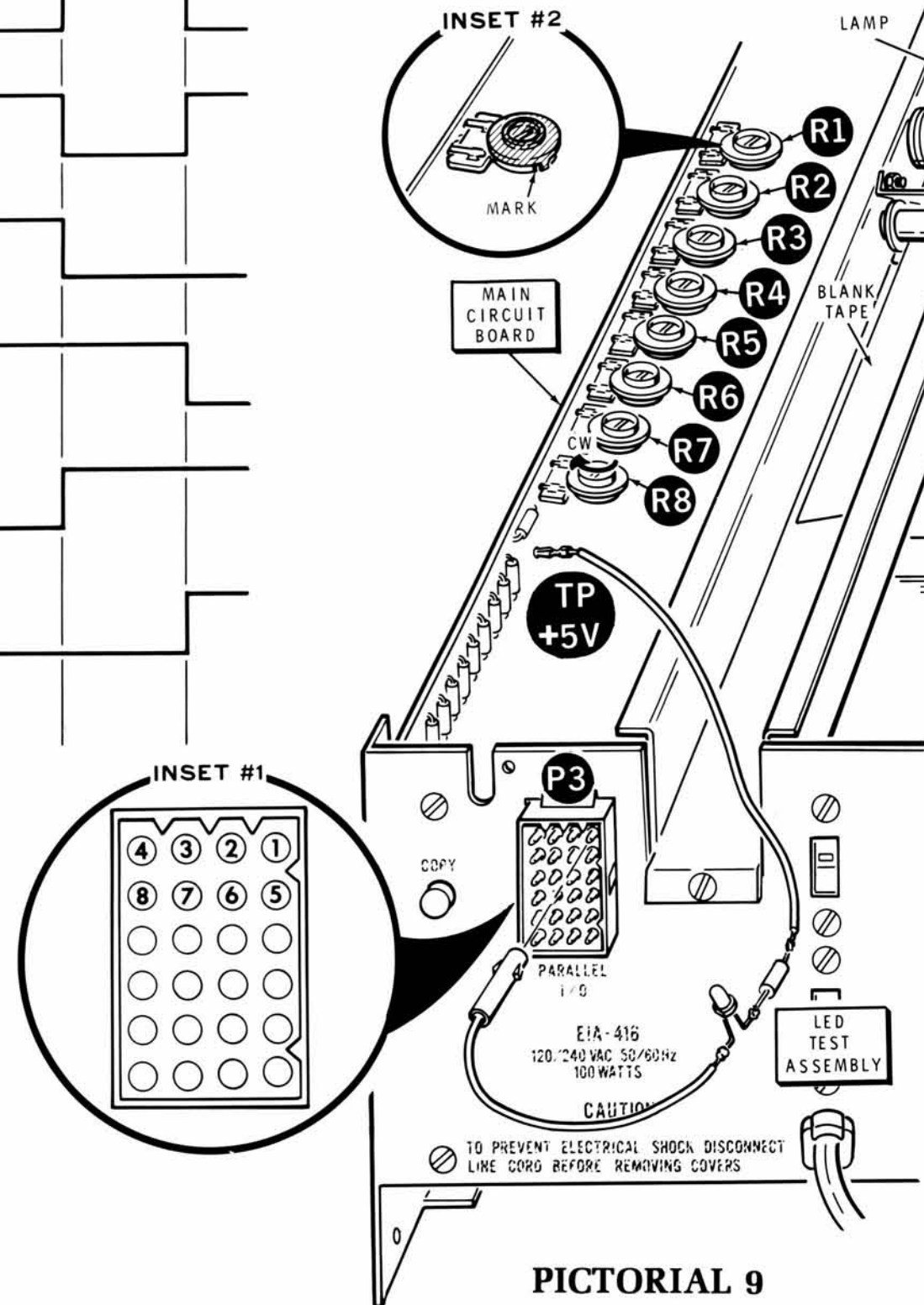
PICTORIAL 3



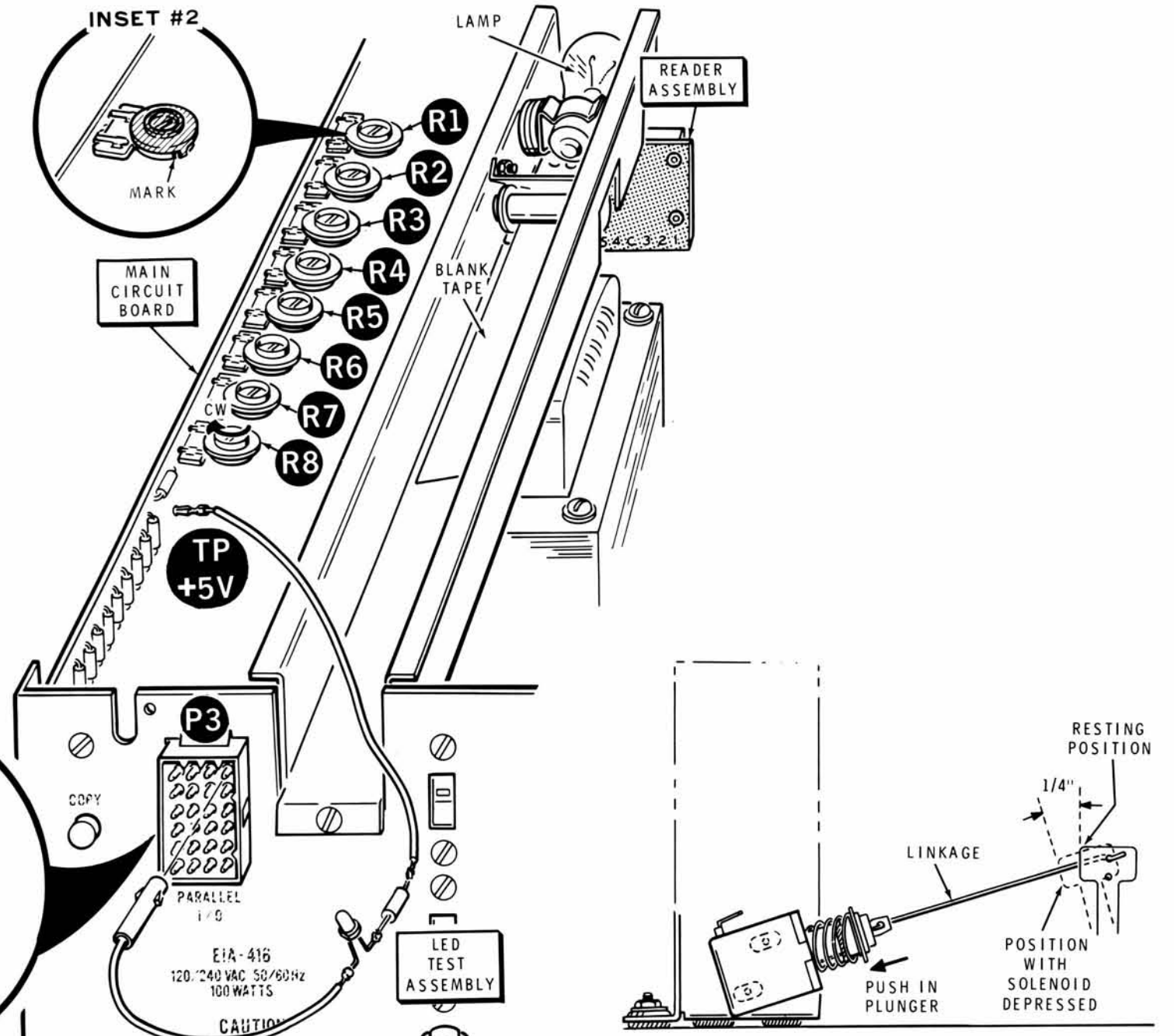
**PICTORIAL 7**



PICTORIAL 8



PICTORIAL 9



PICTORIAL 10



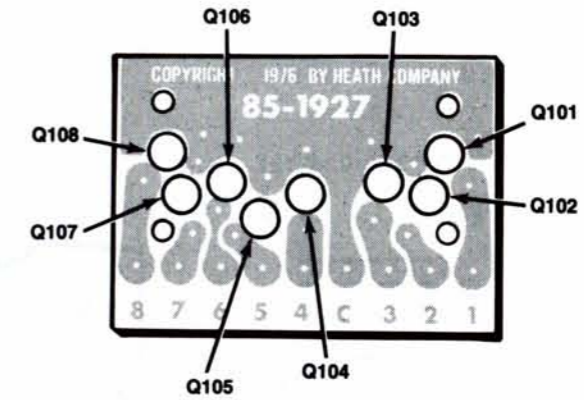
# CIRCUIT BOARD X-RAY VIEWS

NOTE: To find the PART NUMBER of a component for the purpose of ordering a replacement part:

- A. Find the circuit component number (R5, C3, etc.) on the X-Ray View.
- B. Locate this same number in the "Circuit Component Number" column of the "Parts List" in the back of this Manual.

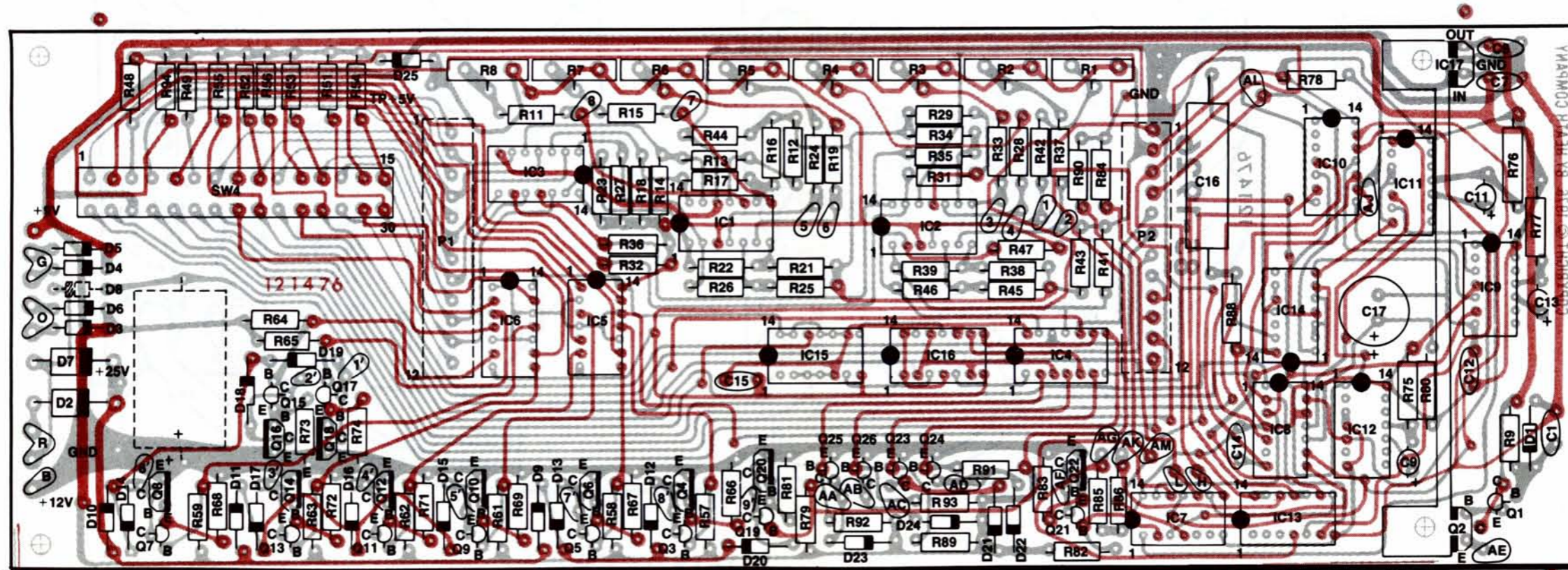
- C. Adjacent to the circuit component number, you will find the PART NUMBER and DESCRIPTION which must be supplied when you order a replacement part.

## READER CIRCUIT BOARD



(Viewed from foil side)

## MAIN CIRCUIT BOARD



(Viewed from component side)





