

"THE MATERIAL HEREIN IS FOR INFORMATION PURPOSES ONLY AND IS SUBJECT TO CHANGE WITHOUT NOTICE. DIGITAL EQUIPMENT CORPORATION ASSUMES NO RESPONSIBILITY FOR ANY ERRORS WHICH MAY APPEAR HEREIN."

## FIELD MAINTENANCE PRINT SET

"THIS DRAWING AND SPECIFICATIONS, HEREIN, ARE THE PROPERTY OF DIGITAL EQUIPMENT CORPORATION AND SHALL NOT BE REPRODUCED OR COPIED OR USED IN WHOLE OR IN PART AS THE BASIS FOR THE MANUFACTURE OR SALE OF ITEMS WITHOUT WRITTEN PERMISSION. COPYRIGHT © 1980 DIGITAL EQUIPMENT CORPORATION."

### TABLE OF CONTENTS

B-TC-TU58-E-1	TU58-E FIELD MAINTENANCE PRINTSET
E-UA-TU58-E-Ø	POWERED DUAL DRIVE ASSY
D-AD-7017567-0-0	TAPE DRIVE ASSEMBLY
K-PL-7017567-0-DBP	TAPE DRIVE ASSEMBLY
D-AD-7015510-0-0	CARTRIDGE DRIVE
E-UA-5413489-0-0	SERIAL TU58
D-CS-5413489-0-1	SERIAL TU58
K-PL-5413489-0-DBP	SERIAL TU58
B-PL-7016753-0-0	INSTALLATION ASSY
D-AD-7017372-0-0	POWER SUPPLY ASSY
A-SP-3700490-0-0	SHIPPING CONTAINER
D-IA-7016305-0-0	CABLE, I/O
D-IA-7016527-0-0	CABLE, POWER
B-DD-TU58-E	POWERED DUAL DRIVE ASSY
B-PL-TU58-E-2	TU58-E SHIPPING LIST
B-PL-7017372-0-0	POWER SUPPLY ASSY

UNIT VARIATIONS COVERED BY THIS PRINT SET
TU58-EX
TU58-EA

TU58-E

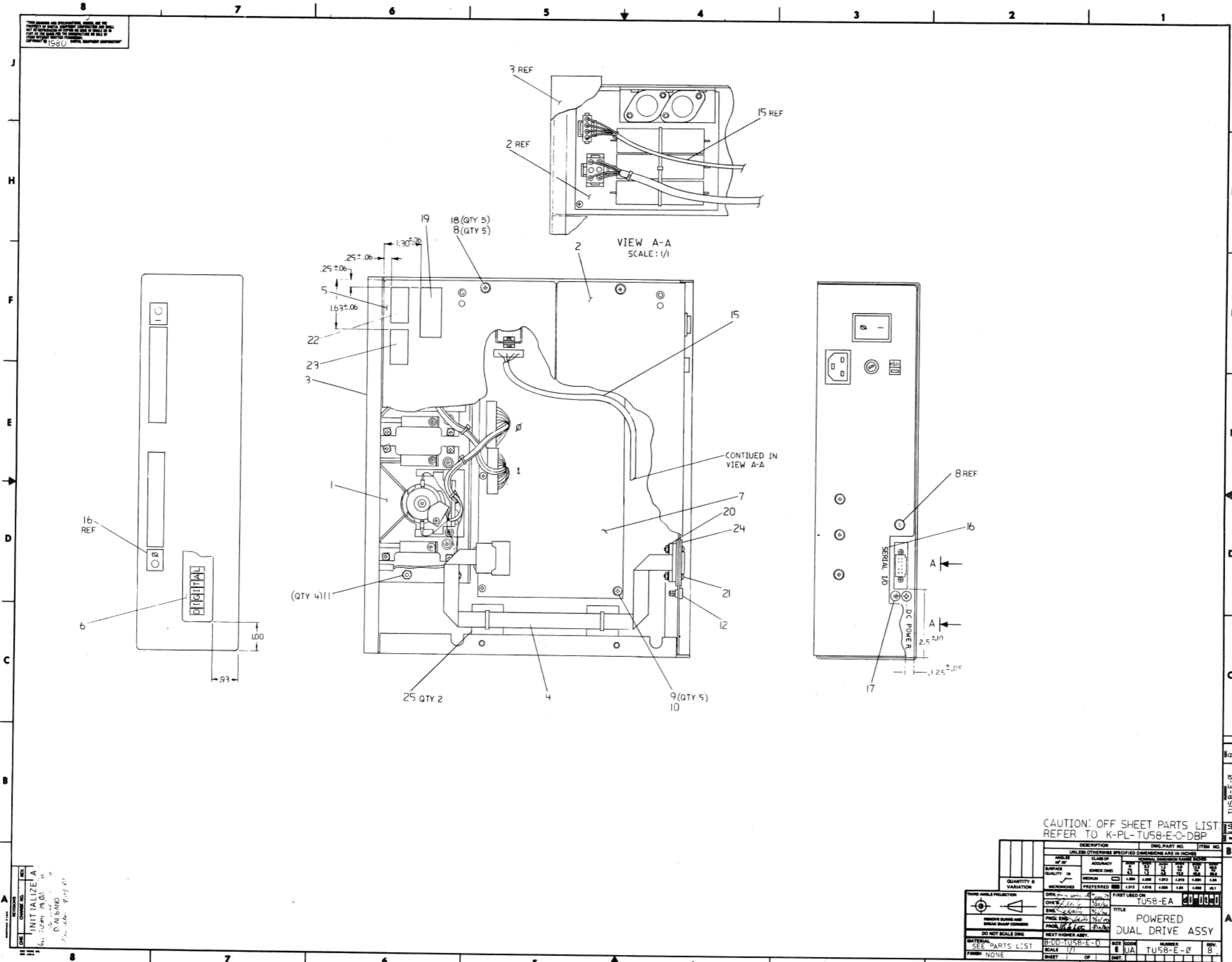
## Field Maintenance Print Set

Digital Equipment Corporation

MF-Ø1Ø14-ØØ

<b>NR</b>	REVISIONS		<b>CHG. NO.</b>	<b>DATE</b>	<b>REV</b>	<div style="float: right; border: 1px solid black; padding: 2px;"><b>digital</b></div> <p>TITLE: TU58-E FIELD MAINTENANCE PRINT SET</p> <p>SIZE <b>B</b>    CODE <b>TC</b>    NUMBER TU58-E-1    REV. <b>B</b></p> <p>DIST.    _____</p>				
		TU58E- ML001	B	26/8/ 80						
	USED ON OPTION/MODEL					DRN. James Secord	DATE 21 JAN 80			
						CHK'D J.Walls	DATE 26 MAR 80			
						SHEET 1 OF <u>1</u>				

REV. B  
 NUMBER TU58-E-1  
 SIZE CODE TC  
**B**



THIS DRAWING AND ASSOCIATED PARTS ARE THE PROPERTY OF THE UNITED STATES GOVERNMENT AND ARE TO BE REPRODUCED AND TRANSMITTED IN ANY FORM AND BY ANY MEANS, ELECTRONIC OR MECHANICAL, INCLUDING PHOTOCOPYING, RECORDING, OR BY ANY INFORMATION STORAGE AND RETRIEVAL SYSTEM, WITHOUT PERMISSION IN WRITING FROM THE DIRECTOR, ARPA, WASHINGTON, D.C. 20301

INITIALIZE A  
 DRAWN BY: [Signature]  
 CHECKED BY: [Signature]  
 DATE: [Date]  
 D. AI B. AND  
 [Other notes]

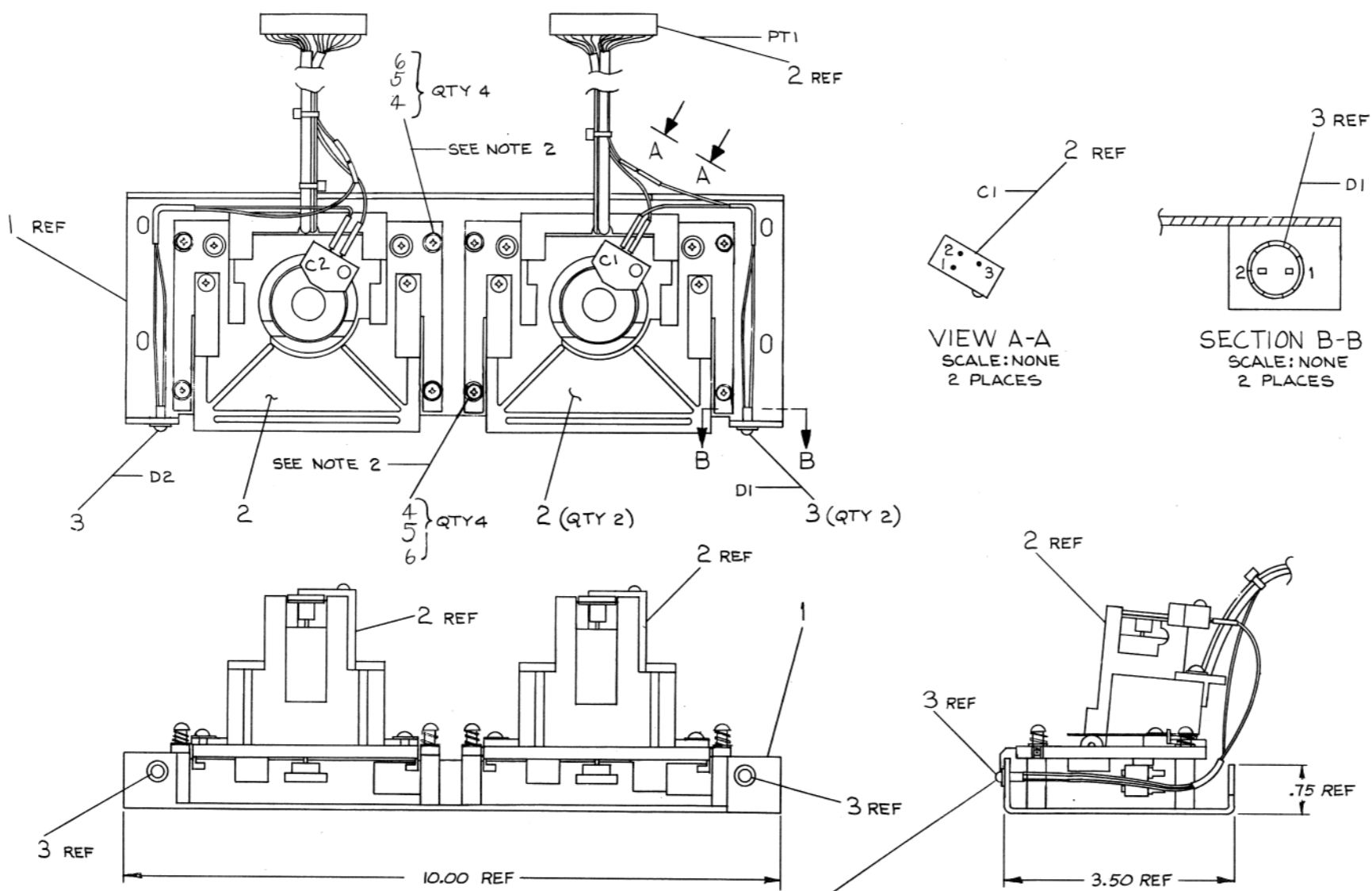
DESCRIPTION		QTY	UNIT	DATE	BY
POWERED DUAL DRIVE ASSY		1			
MATERIAL: B-000 TU58-E-0					
SCALE: 1/1					
SHEET: 1					
REV: 8					

"THIS DRAWING AND SPECIFICATIONS, HEREIN, ARE THE PROPERTY OF DIGITAL EQUIPMENT CORPORATION AND SHALL NOT BE REPRODUCED OR COPIED OR USED IN WHOLE OR IN PART AS THE BASIS FOR THE MANUFACTURE OR SALE OF ITEMS WITHOUT WRITTEN PERMISSION. COPYRIGHT © 1980, DIGITAL EQUIPMENT CORPORATION"

0-0-195107 2

WIRE TABLE							
ITEM NO	DESCRIPTION	COLOR	FROM CONNECTION	WITH	TO CONNECTION	WITH	REMARKS
3	26	BRN	D1-1	---	C1-2	---	SEE NOTE #1
			D1-2	---	PT1-B(BLK WIRE)	---	
3	26	BRN	D2-1	---	C2-2	---	SEE NOTE #1
			D2-2	---	PT2-B(BLK WIRE)	---	

NOTES:  
 1. DISCONNECT EXISTING BRN WIRE FROM C1-2 & C2-2  
 2. TORQUE VALUES ON DRIVES TO BE 5 IN./LBS. ON ITEM #6



CAUTION: OFF SHEET PARTS LIST EXISTS K-PL-7017567-0-DBP

NOTE:  
 WHEN ASSEMBLING BE SURE THAT L.E.D. LOCKING TABS MATE WITH METAL

DESCRIPTION	DWG./PART NO.	ITEM NO.
UNLESS OTHERWISE SPECIFIED DIMENSIONS ARE IN INCHES		
ANGLES	CLASS OF ACCURACY	NOMINAL DIMENSION RANGE INCHES
10° 30'		OVER 0 TO .25
		OVER 0.2 TO 1.5
		OVER 1.5 TO 4.0
		OVER 4.0 TO 12.0
		OVER 12.0 TO 40.0
		OVER 40.0 TO 80.0
SURFACE QUALITY	CHECK ONE	
IN	MEDIUM	±.004 ±.008 ±.012 ±.016 ±.024 ±.04
	PREFERRED	±.012 ±.016 ±.025 ±.04 ±.06 ±.1
QUANTITY & VARIATION	DRN James Sigurdson 27 Nov 79	FIRST USED ON TU58-VX
	CHK'D [Signature]	
	ENG. [Signature]	TITLE TAPE DRIVE ASSEMBLY
	PROJ. [Signature]	
	PROB. [Signature]	
DO NOT SCALE DWG	NEXT HIGHER ASSY.	
MATERIAL SEE PARTS LIST	E-UA-TU58-VX-0	SIZE CODE D AD
FINISH NONE	SCALE NONE	NUMBER 7017567-0-0
	SHEET OF	REV. A

REVISIONS  
 CHANGE NO. INITIALIZE A

DEC FORM 88 100-5

LINE ITEM	DOCUMENT NUMBER	PART NUMBER	DESCRIPTION	QTY PER VARIATION 00	REFERENCE DESIGNATOR
1	D-IA-7423305-0-0	7423305-00	PLATE,TAPE DRIVE	1	
2	D-AD-7015510-0-0	7015510-00	CARTRIDGE DRIVE	2	C1,C2
3	B-IA-7017543-0-0	7017543-00	L.E.D. ASSY.	2	D1,D2
4		7424101-00	WASHER	8	
5		1217653-00	SPRING, COMPRESSION .234 OD X .3	8	
6		7424084-00	SCREW, SHOULDER	8	

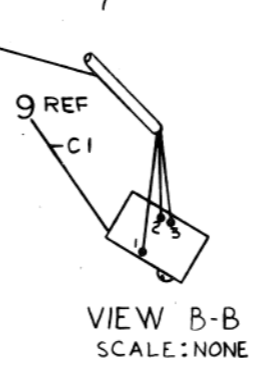
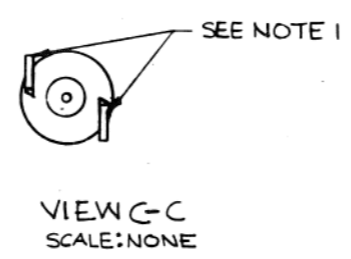
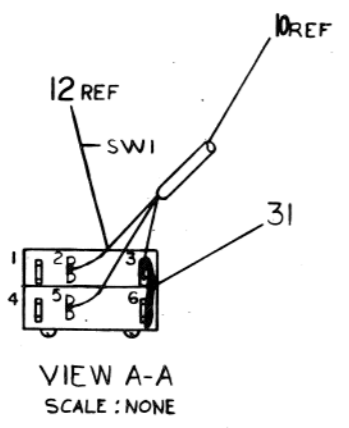
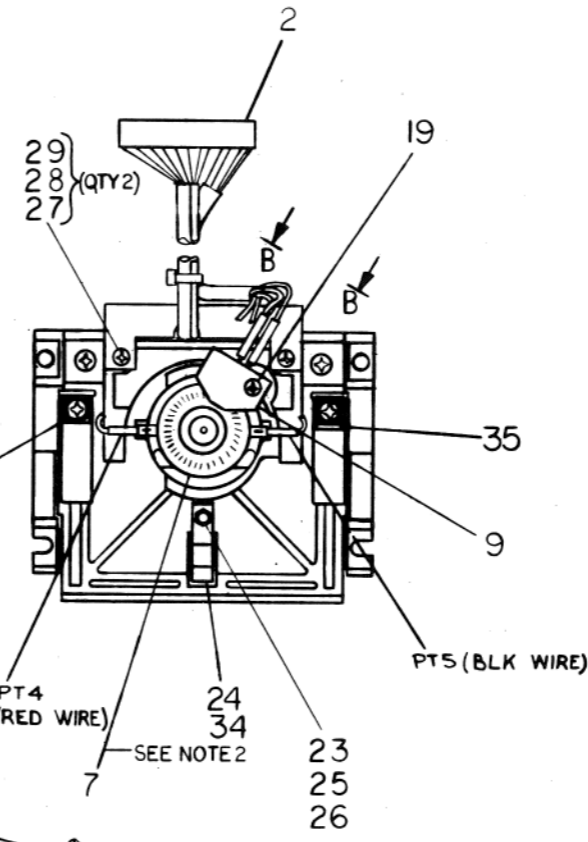
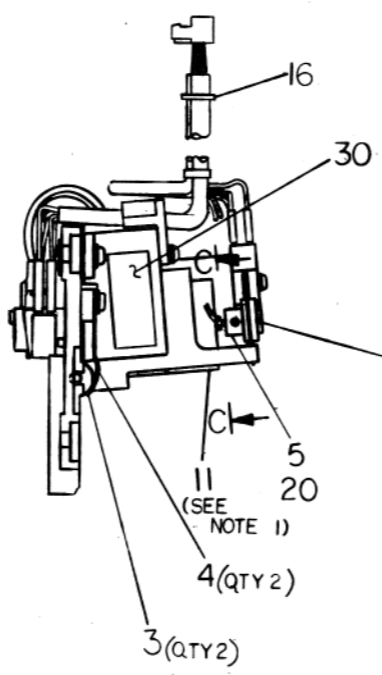
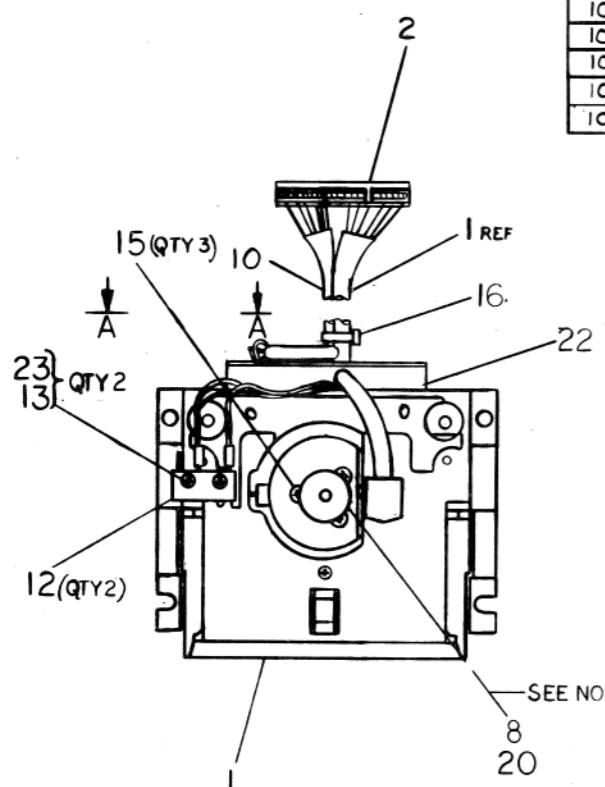
REVISION HISTORY		BASIC PART NO: 7017567		DRN:	JAMES SICARD	DATE:	28-NOV-79	D I G I T A L			
ENG!	ECD NUMBER	REV	SECTION A OF A	CHK'D:	GARY FLANDERS	DATE:	13-DEC-79	TITLE	PARTS LIST		
	INITIAL	A	SECTION,VARIATION INDEX					TAPE DRIVE ASSEMBLY			
			[A] 00								
			[B]								
			[C]	DES.ENG:	J. WALLS	DATE:	21-JAN-80				
			[D]								
			[E]					DOCUMENT NUMBER			
			[F]	RESP.ENG.:	J. WALLS	DATE:	07-JAN-80				
			[G]					SIZE	CODE	NUMBER	REV
			[H]								
			[I]								
			[J]								
			[K]	MFG.ENG.:	JOHN LABATE	DATE:	26-MAR-80	K	PL	7017567-0-DBP	A
			[L]								
			[M]	ASSEMBLY NUMBER:		TOP DOCUMENT NUMBER:		FILE NAME:	EDIT #		
			[N]	D-AD-7017567-0-0		E-UA-TU58-UX-0		Z1473A.PLS	2		

"THIS DRAWING AND SPECIFICATIONS HEREIN, ARE THE PROPERTY OF DIGITAL EQUIPMENT CORPORATION AND SHALL NOT BE REPRODUCED OR COPIED OR USED IN WHOLE OR IN PART AS THE BASIS FOR THE MANUFACTURE OR SALE OF ITEMS WITHOUT WRITTEN PERMISSION. COPYRIGHT (C) 1980. DIGITAL EQUIPMENT CORPORATION"

WIRE TABLE							
ITEM NO	DESCRIPTION	COLOR	FROM		TO		REMARKS
			CONN	WITH	CONN	WITH	
10	24	YEL	PT-2	---	SWI-5	---	
10	24	GRY	PT-1	---	SWI-2	---	
10	24	VIO	PT-3	---	SWI-3	---	
31	22	---	SW-4	SOLD	SWI-3	SOLD	BUS WIRE
10	24	GRN	PT-6	---	CI-3	---	
10	24	BRN	PT-8	---	CI-2	---	
10	24	BLU	PT-7	---	CI-1	---	
10	24	BLK	PT-5	---	MOTOR-	---	
10	24	RED	PT-4	---	MOTOR+	---	TWISTED PAIR

- ASSEMBLE ITEM#5,6 & 9 USING  $5 \pm .5$  IN LBS TORQUE.
- CARTRIDGE WITHDRAWAL FORCE SHALL BE A MAXIMUM OF 4.8 LBS. AND WHEN AN EXCESS FORCE OF 1LB. IS APPLIED TO THE DRIVE ROLLER (OUTWARD) AND IS REMOVED, THE CARTRIDGE SHALL STILL BE AGAINST THE DRIVE REFERENCE STOPS.
- HEAD SKEW TO BE WITHIN  $6' \pm 0'6''$  AFTER FINAL ASSY.

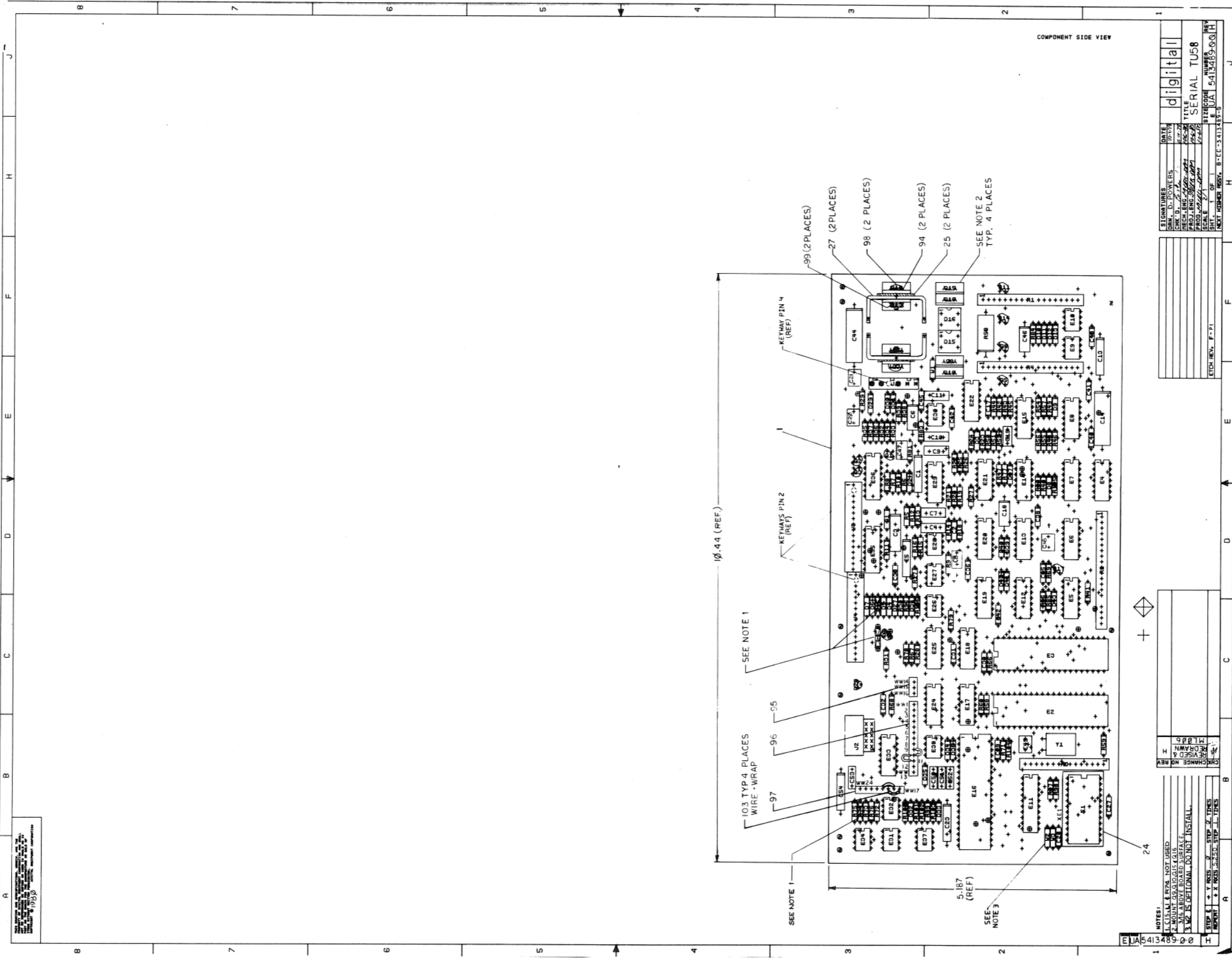
- NOTES:
- MOTOR TO BE ROTATED TO PROVIDE EASIEST ACCESS TO TERMINALS PT4, PT5. MOTOR LEADS MAY BE BENT AS SHOWN IF NECESSARY TO CLEAR MOTOR MOUNT.
  - CODE WHEEL ITEM#7 MUST ROTATE FREELY WITHOUT RUBBING IN SLOT IN OPTICAL SENSOR ITEM#9. TIGHTEN ITEM#20 TO  $3.5 \pm .5$  IN LBS. SET DRIVE ROLLER, ITEM#8, TO BE FLUSH WITH END OF MOTOR SHAFT ITEM#11. TIGHTEN ITEM#20 TO  $3.5 \pm .5$  IN LBS.
  - TIGHTEN ITEMS 13 & 25 TO  $2.0 \pm .5$  IN LBS. TIGHTEN ITEMS 15, 17 & 27 TO  $3.5 \pm .5$  IN LBS. TIGHTEN ITEM 21 TO  $5 \pm .5$  IN LBS.
  - WHEN CARTRIDGE IS INSERTED INTO DRIVE, THE FORCE ON THE DRIVE ROLLER (ITEM 8) IS TO BE  $1LB \pm .1$ .



CAUTION: OFF SHEET PARTS LIST K-PL-7015510-0-DBP

7015510-ML001 A	D. WARREN	9/28/77
7015510-ML002 B	D. WARREN	9/28/77
TU58-XA-ML003 C	D. WARREN	9/28/77
TU58-XA-ML004 D	D. WARREN	9/28/77
TU58-XA-ML005 E	D. WARREN	9/28/77

DESCRIPTION	QTY	PART NO.	ITEM NO.
UNLESS OTHERWISE SPECIFIED DIMENSIONS ARE IN INCHES			
QUANTITY & VARIATION	DESCRIPTION	QTY	PART NO.
1	CARTRIDGE DRIVE		
TITLE		7015510-0-0	
DRAWN BY		DATE	
CHECKED BY		DATE	
APPROVED BY		DATE	
NEXT HIGHER ASSY.			
SEE PARTS LIST		SCALE 1/1	
PART NO.		REV.	
7015510-0-0		E	



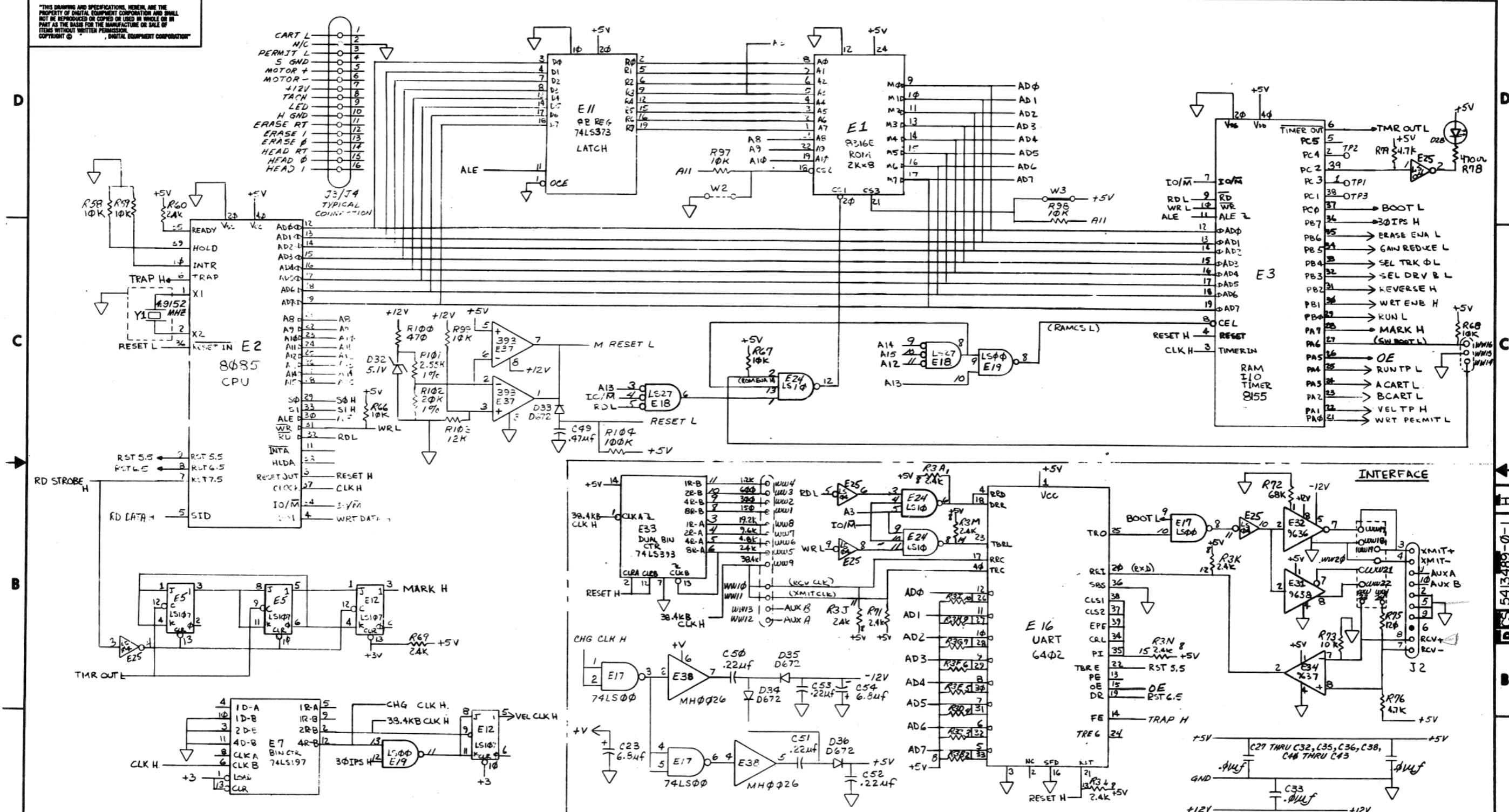
digital	
SERIAL TU58	
NUMBER	UA 5413489-00H
ETCH REV. F-PI	

CHANGE NO	REV	DESCRIPTION

NOTES:
1. UNLESS OTHERWISE NOTED, ALL DIMENSIONS ARE IN INCHES.
2. MOUNT COMPONENTS AS SHOWN.
3. ALL DIMENSIONS ARE TO THE CENTER OF THE COMPONENT UNLESS OTHERWISE SPECIFIED.
4. STEP 1 - X AXIS - 2.50 STEP - 1.125
5. STEP 2 - Y AXIS - 2.50 STEP - 1.125

1988

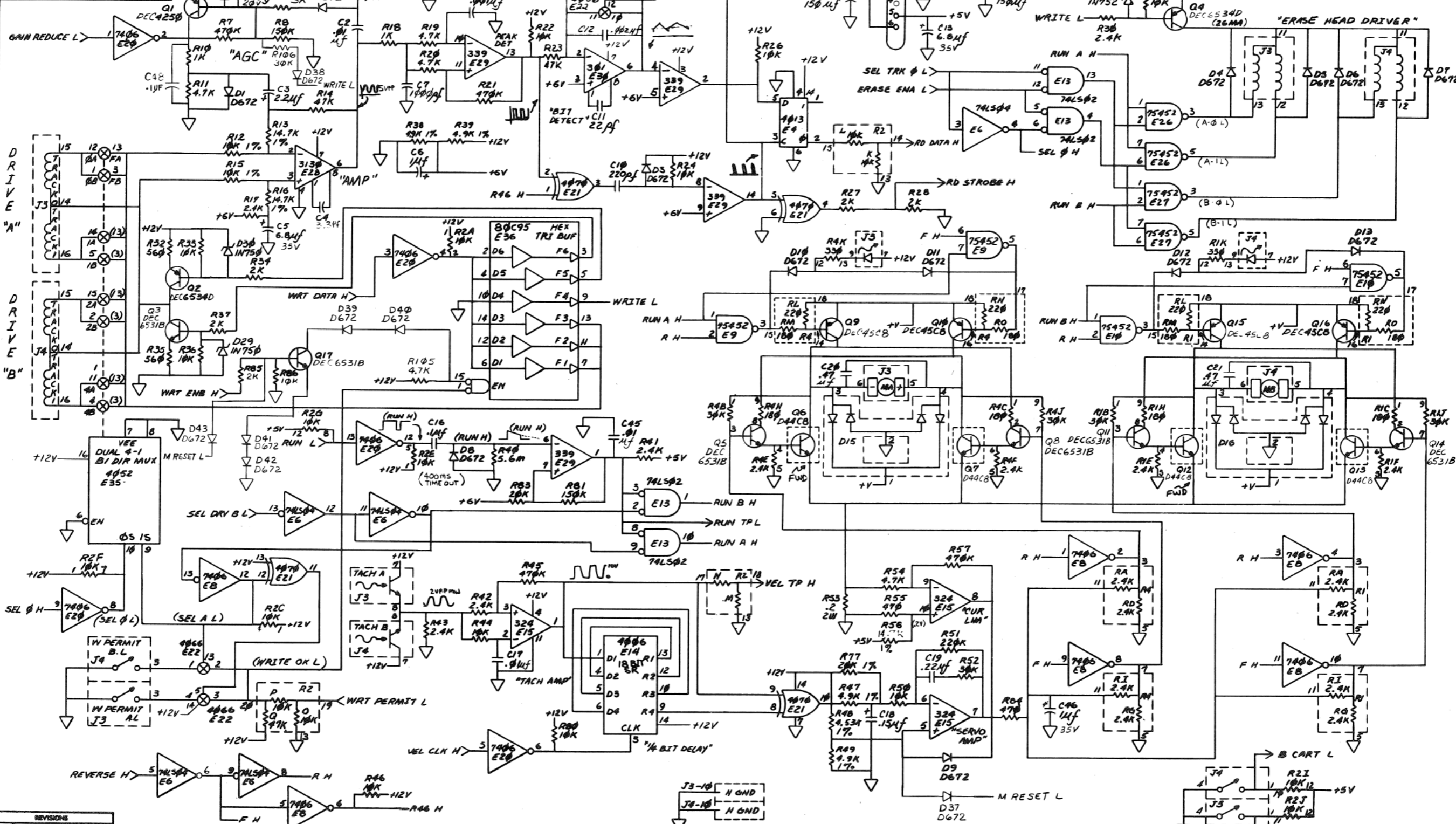
THIS DRAWING AND SPECIFICATIONS HEREIN ARE THE PROPERTY OF DIGITAL EQUIPMENT CORPORATION AND SHALL NOT BE REPRODUCED OR COPIED OR USED IN WHOLE OR IN PART AS THE BASIS FOR THE MANUFACTURE OR SALE OF ITEMS WITHOUT WRITTEN PERMISSION. DIGITAL EQUIPMENT CORPORATION. COPYRIGHT ©



REV.	CHG.	BY	DATE	DESCRIPTION
1		M. LEIS	10/16/78	INITIAL DESIGN
2		M. LEIS	11/15/78	REVISED FOR MANUFACTURE
3		M. LEIS	12/15/78	REVISED FOR MANUFACTURE
4		M. LEIS	1/15/79	REVISED FOR MANUFACTURE
5		M. LEIS	2/15/79	REVISED FOR MANUFACTURE
6		M. LEIS	3/15/79	REVISED FOR MANUFACTURE
7		M. LEIS	4/15/79	REVISED FOR MANUFACTURE
8		M. LEIS	5/15/79	REVISED FOR MANUFACTURE

DRN. M. LEIS	DATE 5/1/79	FIRST USED ON	TU58
CHK'D H. LEIS	DATE 7-20-78	TITLE	TU58 ELECTRONICS:
ENG. ROSE/LEIS	DATE 7/6/78	SERIAL	
PROJ. ENG. M. LEIS	DATE 8/11/78		
PROD. PLAN. M. LEIS	DATE 8-1-79		
NEXT HIGHER ASSY.			
SCALE		SIZE CODE	NUMBER
SHEET 1 OF 2		DIST.	

"THIS DRAWING AND SPECIFICATIONS, HEREIN, ARE THE PROPERTY OF DIGITAL EQUIPMENT CORPORATION AND SHALL NOT BE REPRODUCED OR COPIED OR USED IN WHOLE OR IN PART AS THE BASIS FOR THE MANUFACTURE OR SALE OF ITEMS WITHOUT WRITTEN PERMISSION. COPYRIGHT © 1976 DIGITAL EQUIPMENT CORPORATION"



REVISIONS table with columns for CHANGE NO. and REV.



LINE ITEM	DOCUMENT NUMBER	PART NUMBER	DESCRIPTION	QTY PER VARIATION	REFERENCE DESIGNATOR
				00	
1	1	5013488-00	TU58 ELECTRONIC SERIAL	1	
2	2	1215816-00	HEADER.100 15POS STRAIGHT	2	J3,J4
3	3	1000021-00	220.0 MMF 100V 5%200PPM MICA	1	C10
4	4	1000023-00	*** THIS ITEM IS NOT USED ***	-	
5	5	1010978-36	.1 MFD 50V 10% CER	3	C8,C16,C47
6	6	1000042-00	1000.0 MMF 100V 5%200PPM MICA	2	C9,C7
7	7	1001610-00	.01 MFD 50V +80-20% 25U CER	17	C2,C17,C27-C33,C35,C36,C38,C40, CONT C41,C42,C43,C45
8	8	1001776-00	1 MFD 35V 10% S.TANT	2	C6,C46
9	9	1002315-00	2000.0 MMF 500V 5%200PPM MICA	1	C12
10	10	1013466-21	3.3 MMF 50V+- .5PF CER	1	C4
11	11	1002431-00	2.2MFD 35V 10% S.TANT	2	C1,C3
12	12	1005306-00	6.8MFD 35V 10% S.TANT	4	C5,C13,C23,C54
13	13	1005334-00	*** THIS ITEM IS NOT USED ***	-	
14	14	1005820-00	22.0 MMF 100V 5%200PPM MICA	1	C11
15	15	1010978-40	.22 MFD 50V 10% CER	1	C19
16	16	1011895-00	.15 MFD 35V 10% S.TANT	1	C18
17	17	1012312-00	*** THIS ITEM IS NOT USED ***	-	
18	18	1100101-00	*** THIS ITEM IS NOT USED ***	-	
19	19	1102808-00	1N 752A VZ= 5.6 5% .40W	1	D27
20	20	1105275-00	D 672 TR= 15NS PIV= 60V SI	25	D1-D13,D31,D33-D43
21	21	1110324-00	LED 1MCD@10MA PIV=3	1	D28
22	22	1115369-00	VM 1B PIV=100 I=1A	2	D15,D16
23	23	1213506-04	HEADER 10POS RT ANGLE W/3 SI	1	J2
24	24	1212385-04	SOCKET 24PIN IC	1	XE1
25	25	USED FOR Q7 & Q12	INSULATOR,RUBBER SILICONE	2	
26	26	1213113-01	*** THIS ITEM IS NOT USED ***	-	
27	27	1213418-01	HEAT SINK,VERTICLE MNT,ALUMINUM	2	
28	28	1300247-00	120.0 .25 W 5.0 % CC	1	R75
29	29	1300274-00	*** THIS ITEM IS NOT USED ***	-	

REVISION HISTORY		BASIC PART NO: 5413489		DRN: DAN MUTNANSKY		DATE: 22-MAY-78		DIGITAIL	
ENG	ECD NUMBER	REV	SECTION A OF A	CHK'D:	P. BOSSMAN	DATE:	6-JUNE-78	TITLE	PARTS LIST
---	INIT	C	SECTION,VARIATION INDEX	CHK'D:	P. BOSSMAN	DATE:	6-JUNE-78		
FB	5413489-ML001	D	[A] 00					SERIAL TU58	
ML	5413489-ML003	E	[B]						
ML	5413489-ML004	F	[C]	DES.ENG:	MIKE LEIS	DATE:	22-MAY-78		
DM	5413489-ML006	H	[D]						
			[E]					DOCUMENT NUMBER	
			[F]	RESP.ENG.:	M. LEIS	DATE:	6-JUNE-78		
			[G]					SIZE	CODE
			[H]					NUMBER	REV
			[I]						
			[J]						
			[K]	MFG.ENG.:	P. BARTON	DATE:	6-JUNE-78	K	PL
			[L]					5413489-0-DBP	H
			[M]	ASSEMBLY NUMBER:		TOP DOCUMENT NUMBER:		FILE NAME:	EDIT #
			[N]	IE-UA-5413489-0-0		TU58		Z0582H.PLS	37

"THIS DRAWING AND SPECIFICATIONS HEREIN, ARE THE PROPERTY OF DIGITAL EQUIPMENT CORPORATION AND SHALL NOT BE REPRODUCED OR COPIED OR USED IN WHOLE OR IN PART AS THE BASIS FOR THE MANUFACTURE OR SALE OF ITEMS WITHOUT WRITTEN PERMISSION. COPYRIGHT (C) 1980. DIGITAL EQUIPMENT CORPORATION"



LINE	ITEM	DOCUMENT NUMBER	PART NUMBER	DESCRIPTION	QTY PER VARIATION 00	REFERENCE DESIGNATOR
76	76		1914451-00	74LS393 COUNTER,BINARY,4BIT	1	E33
77	77		1914466-00	3130E OP AMP MOS/FET IN,CM	1	E28
78	78		1915219-00	LS373 FF-D OCTAL-TRANSPARE	1	E11
79	79		1915415-00	9636 DRIVER,DUAL,EIA RS-	1	E32
80	80		1915416-00	9637 RECEIVER,DUAL,RS-42	1	E34
81	81		1915417-00	9638 DRIVER,DUAL,EIA RS-	1	E31
82	82		2113605-00	4006B SHIFT REG,18 STAGE	1	E14
83	83		2113609-00	4013B FF-D DUAL W/SET/RESE	1	E4
84	84		2113630-00	4052B MULTIPLEXER 4CHAN DI	1	E35
85	85		2113632-00	4066B BILATERAL SWITCH-QUA	1	E22
86	86		2113634-00	4070B X-OR GATE-QUAD CMOS	1	E21
87	87		2113937-00	UART 125K BUAD	1	E16
88	88		2114663-00	MM 80C95 BUFFER-GATE-HEX TRIS	1	E36
89	89		2114963-00	UP,8-BIT NMOS	1	E2
90	90		2114964-00	RAM 2048 MOSJ-STATIC	1	E3
91	91		23089E2-00	E2-01	1	E1
92	92		1212619-07	HEADER.156 6POS STRAIGHT	1	J1
93	93		9009185-00	JUMPER, WIRE, INSULATED, BLACK B	2	W1,W3
94	94	USED FOR Q7 & Q12	9010057-00	WASHER, INSULATING SHOULDER FOR	2	
95	95		1215816-01	HEADER.100 3POS STRAIGHT	1	
96	96		1215816-02	HEADER.100 13POS STRAIGHT	1	
97	97		1215816-03	HEADER.100 8POS STRAIGHT	1	
98	98		9006011-01	SCREW,PAN,PHIL 4-40X 3/8 SS	2	
99	99		9006557-00	NUT,KEP , 4-40X 1/4 AF	2	
100	100		1100124-00	1N 750A VZ= 4.7 5% .40W P	2	D29,D30
101	101		1301890-00	560.0 .25 W 5.0 % CC	2	R32,R35
102	102		1313840-00	4.53 K .25 W 1.0 % RN55D-F10	1	R48
103	103		9105740-55	WIRE(WRAP)30AWG UL1423 A/R		
104	104		1012084-03	150 MFD 15V +75-10% AL EL	2	C44,C14
105	105		9107256-11	*** THIS ITEM IS NOT USED ***	-	
106	106		1910741-01	7406N BUFFER,HEX	1	E20
107	107		5414232-00	*** THIS ITEM IS NOT USED ***	-	
108	108		1310633-00	2.55 K .25 W 1.0 % RN55D-F10	1	R101
109	109		1300488-00	12.0 K .25 W 5.0 % CC	1	R103
110	110		1302466-00	100.0 K .25 W 5.0 % CC	1	R104
111	111		1105871-00	1/4M5.1A21 = 5.1 1% .25W N	1	D32
112	112		1914156-00	LM 393 VOLT.COMPARATOR DUAL	1	E37
113	113		1912098-00	0026 DRIVER,MOS CLOCK,2	1	E38
114	114		1010274-01	.22 MFD 50V +80-20% Z5U CER	4	C50-C53
115	115		1010279-00	.47 MFD 25V 20% CER	3	C20,C21,C49

! D ! I ! G ! I ! T ! A ! L !	! TITLE	! SERIAL T058	! SECTION A OF A	! SIZE ! CODE !	! DOCUMENT NUMBER	! REV
! ! ! ! ! ! ! !	! ! ! ! ! ! ! !	! ! ! ! ! ! ! !	! ! ! ! ! ! ! !	! K ! PL !	! 5413489-0-00P !	! H !

# DIGITAL EQUIPMENT CORPORATION PARTS LIST

QUANTITY / VARIATION

NOTES:

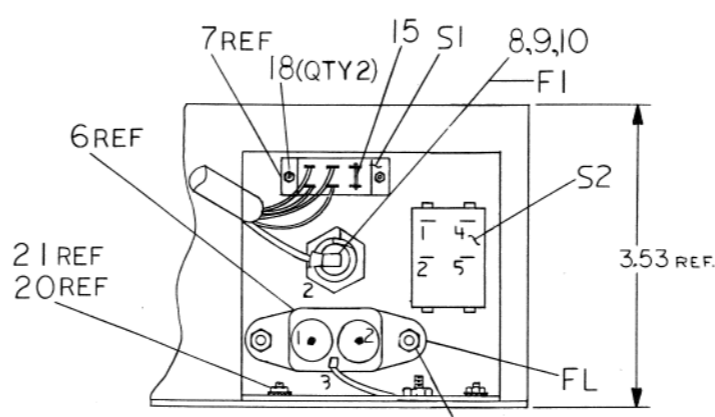
MADE BY <i>P. B. F. ...</i>	CHECKED <i>[Signature]</i>	SECTION
DATE <i>12 APR 79</i>	DATE <i>...</i>	
ENG <i>A. Moore</i>	PROD <i>[Signature]</i>	ISSUED SECTION
DATE <i>12 APR 79</i>	DATE <i>...</i>	

ITEM NO.	DRAWING NO.	PART NO.	DESCRIPTION	7016753-0	7016753-01											REF DESIGNATION
1	C-MD-7422173-0-0	7422173-0	BRACKET, MOUNTING	4	-											
2		9008190-00	BUMPER, RUBBER	4	4											
3		9006071-01	SCREW, PAN HD PHL #10-32 x .38	4	4											
4		9006635	WASHER, LOCK, INT TOOTH #10	4	4											
5		3616450-00	LABEL, CONFIGURATION	1	-											
6	A-PS-9905129-0-0	9905129-20	BAG, PLASTIC	1	1											
7	C-MD-7423311-0-0	7423311	BRACKET, MTG.	-	4											

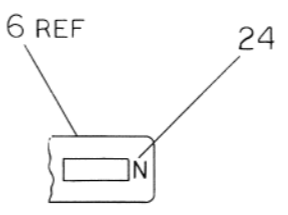
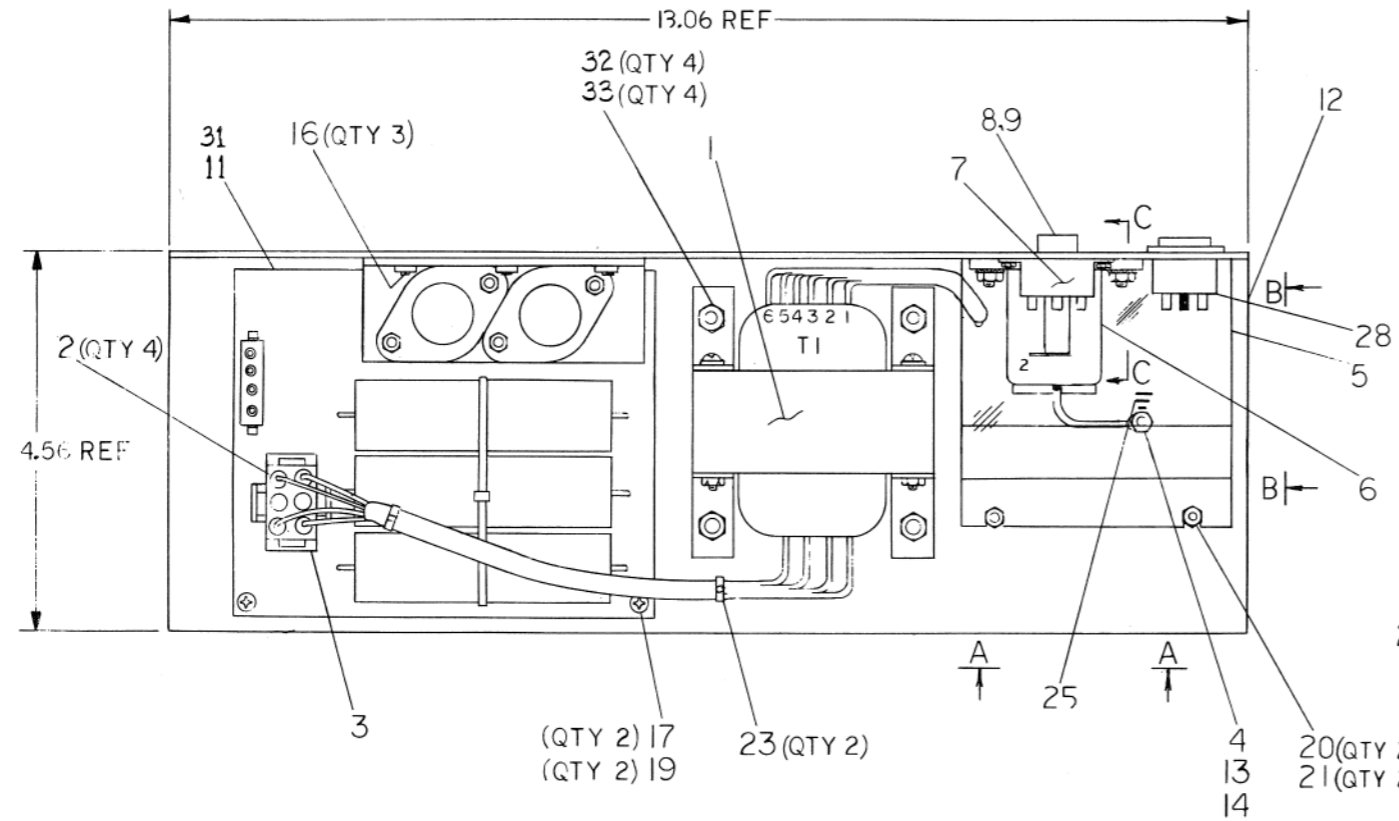
E.C.O. NO. ML001	"THIS DRAWING AND SPECIFICATIONS, HEREIN, ARE THE PROPERTY OF DIGITAL EQUIPMENT CORPORATION AND SHALL NOT BE REPRODUCED OR COPIED OR USED IN WHOLE OR IN PART AS THE BASIS FOR THE MANUFACTURE OR SALE OF ITEMS WITHOUT WRITTEN PERMISSION. COPYRIGHT ©1979 DIGITAL EQUIPMENT CORPORATION"	TITLE INSTALLATION ASSY	ASSY NO.	SIZE <b>B</b>	CODE <b>PL</b>	NUMBER 7016753-0-0	REV. A
			SHEET 1 OF 1		INSERTION PARTS LIST DATA BASE REV		

THIS DRAWING AND SPECIFICATIONS HEREIN ARE THE PROPERTY OF DIGITAL EQUIPMENT CORPORATION AND SHALL NOT BE REPRODUCED OR COPIED OR USED IN WHOLE OR IN PART AS THE BASIS FOR THE MANUFACTURE OR SALE OF ITEMS WITHOUT WRITTEN PERMISSION.  
 COPYRIGHT © 1980 DIGITAL EQUIPMENT CORPORATION

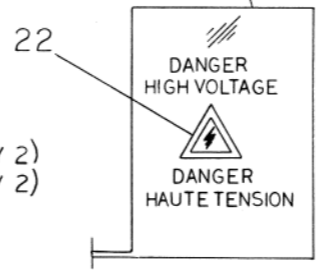
WIRE TABLE							
ITEM NO	DESCRIPTION	FROM	TO	REMARKS			
AWG	COLOR	CONNECTION WITH	CONNECTION WITH				
1	18	BLUE	TI-7	PI-6 3&2 9.37 LG			
1		BLUE	TI-8	PI-4 3&2 9.37 LG			
1		BLU/BLK	TI-9	PI-3 3&2 10.00 LG			
1		BLU/BLK	TI-10	PI-1 3&2 10.00 LG			
26		GRN/YEL	FLI-3	SOLDER GRN 4&14 3.0 LG			
27		BROWN	FLI-1	SOLDER S2-4 30 4.25 LG			
1		RED	TI-1	FI-2 SOLD.10 6.5 LG			
1		RED	TI-2	SI-2A SOLDER 4.5 LG			
1		RED/YEL	TI-3	SI-1 5.5 LG			
1		BLACK	TI-4	SI-2 4.5 LG			
1		WHITE	TI-5	SI-1A SOLDER 4.0 LG			
1		WHITE	TI-6	S2-2 30 7.0 LG			
15			SI-1B SOLDER	SI-2B SOLDER .5 LG			
27		BRN	S2-5 30	FI-1 SOLDER 3.0 LG			
29		18	WHT S2-1 30	FLI-2 SOLDER 3.0 LG			



VIEW A-A  
SCALE 1:1



VIEW C-C  
SCALE 1:1



VIEW B-B  
SCALE 1:1

CAUTION: OFF SHEET PARTS LIST EXISTS  
SEE B-PL-7017372-0-0

REVISION HISTORY
ECO NUMBER
INITIALIZE A
DATE

DESCRIPTION	DRAWING NO.	PART NO.	ITEM NO.						
UNLESS OTHERWISE SPECIFIED DIMENSIONS ARE IN INCHES AND THE FOLLOWING TOLERANCES APPLY (PER DEC STD 114)			FIRST USED ON TU58-EX						
INCHES TOLERANCES X = ± .1 XX = ± .02 XXX = ± .005	ANGLES ± 0° 30' SURFACE QUALITY	APPLICABLE DIMENSION RANGE (CHECK ONE)				DIMENSION RANGE IN INCHES			
		TO	TO	TO	TO	TO	TO	TO	TO
QUANTITY & VARIATION	THIRD ANGLE PROJECTION	DATE	TITLE						
DO NOT SCALE DRAWING	REMOVE BURRS AND BREAK SHARP CORNERS	DATE	digital						
MATERIAL	SEE PART LIST	DATE	POWER SUPPLY ASSY						
FINISH	NEXT HIGHER DOC	DATE	DOCUMENT NUMBER						
	E-UA-TU58-EX-0	DATE	DAD7017372-0-0 A						
		SCALE	1/1 SHEET 1 OF 1						

SIZE CODE NUMBER  
 DAD7017372-0-0-A  
 REV A

**DIGITAL EQUIPMENT CORPORATION  
MAYNARD MASSACHUSETTS**

<b>PACKAGING INSTRUCTION</b>		REV: A DATE: 3/78
TITLE PKG PROCESSOR SB11 TUS8, TUS58, TUS58L, TUS58		E 11/80
LEGEND		
VARIATION	USED ON	REMARKS
37-00490-00	SB11-AA SB11-DA SB11-EA SB11-FA	N/A
37-00490-01	TUS8-EA TUS8-VA TUS8L-FA	N/A
37-00490-02	TUS 58-FA	

QUANTITY	DWG/PART NUMBER	DESCRIPTION
2	99-06547-00	PAD, MOLDED FOAM
1	99-06546-00	CARTON, REGULAR SLOTTED
5 FT.	99-05729-00	TAPE, CARTON SEALING
4 FT.	99-06200-00	BUBBLEWRAP, ANTISTATIC, PINK
1	99-06663-00	FOLDER, ONE PIECE

PACKAGING INSTRUCTIONS 37-00490-00 (FIGURE 1)

PROCEDURE

- FOLLOW GENERAL GUIDELINES (A-SP-37-00349-0-0). FOR CONSTRUCTION OF FOAM PADS USE MOLD BOX(99-06547-00) AND MOLD INSERT (99-06547-00).
- PLACE ONE FOAM PAD (99-06547) ON EACH END OF THE SB11.
- SET UP THE REGULAR SLOTTED CARTON (99-06546-00) AND SEAL BOTTOM USING ONE STRIP (21 INCHES) OF CARTON SEALING TAPE. (99-05729-00).
- SLIDE SB11 (WITH END CAPS) INTO THE REGULAR SLOTTED CARTON (99-06546-00).
- WRAP POWER CABLE (8C20N-05) IN BUBBLE WRAP (9906200), AND PLACE IT ON TOP OF SB11 UNIT (SEE FIGURE 1).
- PLACE INSTALLATION ASSY(70-16753), H315 LOOP BACK CONNECTOR, AND BN11A-04 23 CONDUCTOR CABLE INTO ONE PIECE FOLDER(9906663-00) AND SEAL USING A 14 INCH STRIP OF CARTON SEALING TAPE.
- PLACE THE ONE PIECE FOLDER CONTAINING THE SPARE PARTS INTO THE REGULAR SLOTTED CARTON AS SHOWN IN FIGURE 1.
- CLOSE TOP FLAPS AND SEAL USING 21 INCHES OF CARTON SEALING TAPE (99-05729-00).
- PALLETIZE AS PER FIGURE 4 ONTO PALLET (9906199) USING FOUR(4) ANGLE BOARD (99-06185-14) AND FOUR(4) STRAPPING(99-05734-02), OR STRETCHWRAP POLYVINYL CHLORIDE FILM (9906553-06).

ENG	M. CHACKO 3/19/81	APPD	W. B. ROBERTS 3/20/81	SIZE	CODE	NUMBER
				A	SP	3700490-0-0
						B

**PACKAGING INSTRUCTION**

TITLE PKG PROCESSOR SB11, TUS8, TUS8L, TUS58		CONTINUATION SHEET
PARTS LIST 37-00490-01		
QUANTITY	DWG/PART NUMBER	DESCRIPTION
2	99-06547-00	Pad, Molded Foam
1	99-06546-00	Carton, Regular Slotted
3 ft.	99-06200-00	Bubblewrap, Antistatic
3.5 ft.	99-05729-00	Tape, Carton Sealing

PACKAGING INSTRUCTIONS (3700490-01)

PROCEDURE (Figure 2)

- Follow General Guidelines (A-SP-3700349-0-0) for construction of foam pads, using Mold Box and Mold Insert (9906547-00).
- Set up the Regular Slotted Carton (9906546-00) and seal bottom using one strip (21 inches) of Carton Sealing Tape (9905729-00).
- Place one Foam Pad (9906547-00) on each end of the TUS8.
- Slide TUS8 with end caps in position half way inside Regular Slotted Carton (9906546-00).
- Now take the Power Cable, wrap it in Bubble Wrap (990600-00), and place it over TUS8 Unit. (See Figure 2).
- Slide the TUS8 Unit with end caps completely into Regular Slotted Carton (9906546-00).
- Close the top flaps and seal using 21 inches of Carton Sealing Tape (9905729-00).
- Palletize as per Figure 4 using four (4) Angle Board (9906185-14) and four (4) Strapping (9905734-02).

DEC 8-1031	W. B. ROBERTS 3/20/81	APPD	M. B. ROBERTS 3/20/81	SIZE	CODE	NUMBER
				A	SP	3700490-0-0
						B

**PACKAGING INSTRUCTION**

TITLE PKG PROCESSOR SB11, TUS8, TUS8L, TUS58		CONTINUATION SHEET
PARTS LIST 3700490-02 (TUS58-FA)		
QUANTITY	DWG/PART NUMBER	DESCRIPTION
2	99-06547-00	Pad, Molded Foam
1	99-06546-00	Carton, Regular Slotted
1	99-06663-00	Folder, One Piece
4 ft.	99-06200-00	Bubblewrap, Antistatic, Pink
4-1/2 ft.	99-05729-00	Tape, Carton Sealing

PACKAGING INSTRUCTIONS (3700490-02)

PROCEDURE

- Follow General Guidelines (A-SP-3700349-0-0) for construction of foam pads. Use Mold Box (9906547-00) and Mold Insert (9906547-00).
- Set up the Regular Slotted Carton (9906546-00) and seal the bottom using one strip (21 inches) of Carton Sealing Tape (9905729-00).
- Place one Molded Foam Pad (9906547-00) on the end of the TUS58-FA and place in the Regular Slotted Carton so that the foam goes to the bottom of the Regular Slotted Carton. See Figure 3.
- Wrap separately in one (1) foot pieces of Bubblewrap (9906200-00): One (1) Leim TUS58, LA120 Hanger (7423304-00) and one (1) Leim TUS58 Clamp (7423303-00). In a two (2) foot piece of Bubblewrap, wrap a Leim Cable Assy (7017352-00).
- Arrange the wrapped parts from step 4 along with two (2) Cartridge Tapes (TUS8K) and a Hardware Bag containing three (3) Pan Head Screws 10-32 x .62LG (9908508-01), three (3) Lock Washer No. 10 (9907906-00) and three (3) No. 10 Flat Washer (9906664-00) into the One Piece Folder (9906663-00) and seal using a 14 inch strip of Carton Sealing Tape.
- Place the One Piece Folder containing the additional parts into the Regular Slotted Carton as shown in Figure 3.
- Place the remaining Molded Foam Pad over the TUS58-FA and close the Regular Slotted Carton and seal using one (1) 21 inch strip of Carton Sealing Tape.
- Palletize as per Figure 4 using four (4) Angle Board (9906185-14) and four (4) Strapping (9905734-02).

DEC 8-1031	W. B. ROBERTS 3/20/81	APPD	M. B. ROBERTS 3/20/81	SIZE	CODE	NUMBER
				A	SP	3700490-0-0
						B

This drawing and specifications, herein, are the property of Digital Equipment Corporation and shall not be reproduced or copied or used in whole or in part as the basis for the manufacture or sale of items without written permission.

**PACKAGING INSTRUCTION**

TITLE

PKG PROCESSOR SB11, TU58L, TUS58

REV:

A  
B

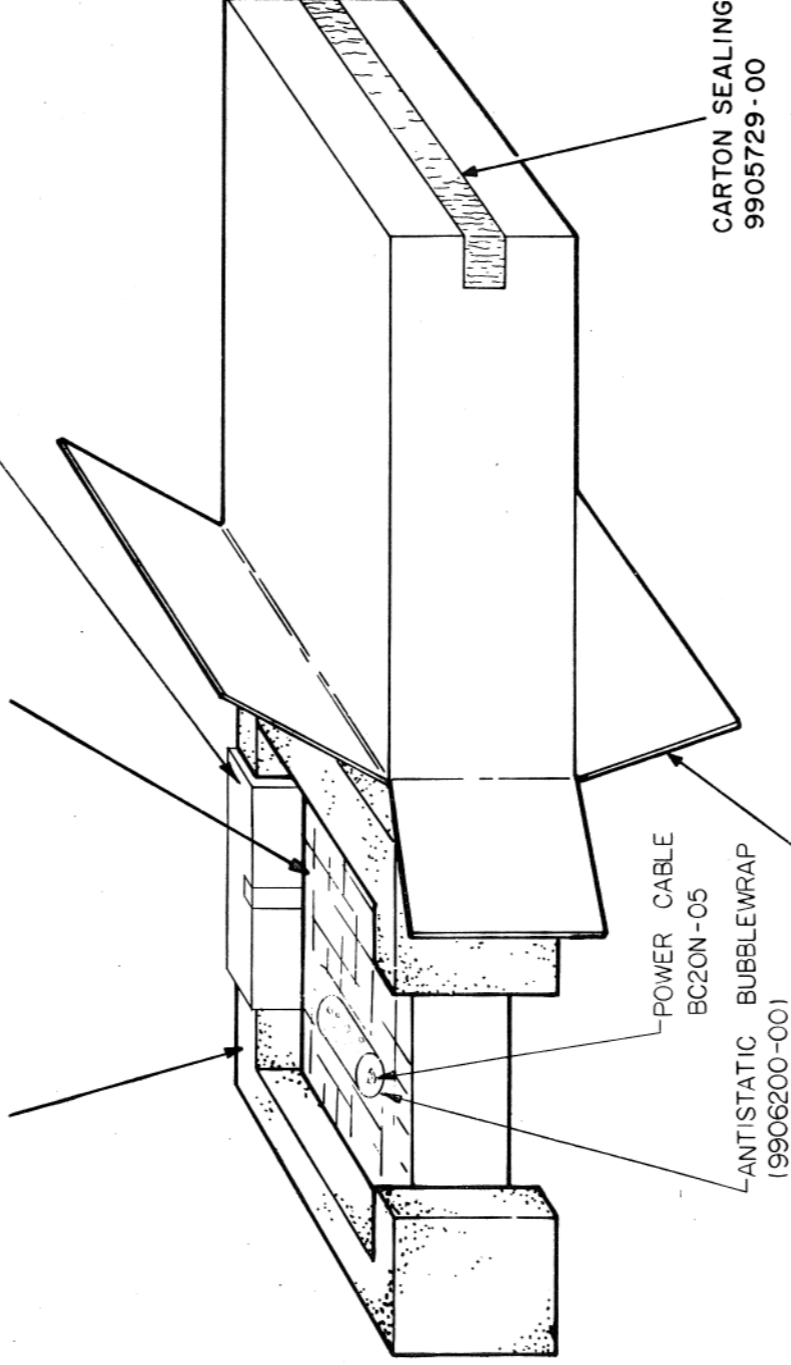
DATE:

3/80  
11/80

MOLDED FOAM PAD  
9906547-00 (2 PIECES)

SB11 PROCESSOR

ONE PIECE FOLDER (9906663-00)  
(CONTAINS SPARE PARTS)



REGULAR SLOTTED CARTON  
9906546-00

FIGURE 1.  
3700490-00

DIMENSIONS & WEIGHTS	USA		METRIC	
	WEIGHT	13 lb.	5.9	KILO
LENGTH	18 in.	457.2	mm.	
WIDTH	10 in.	255.6	mm.	
HEIGHT	20 in.	504.8	mm.	
CUBE	2.1 cu. ft.	.06	cu. m	
DENSITY	6.3 lb/cu. ft.	100.3	Kg/cu. m	

NOTE: Make changes on "C" size original only and rephotograph

ENG. <i>A. J. ...</i>	DATE <i>10/2/79</i>	APPD. <i>M. B. ...</i>	SIZE C	CODE SP	NUMBER 3700490-0-0	REV B
-----------------------	---------------------	------------------------	--------	---------	--------------------	-------

DRC-108

This drawing and specifications, herein, are the property of Digital Equipment Corporation and shall not be reproduced or copied or used in whole or in part as the basis for the manufacture or sale of items without written permission.

# PACKAGING INSTRUCTION

TITLE

PKG PROCESSOR SB11, TU58L, TUS58

REV:

A  
B

DATE:

3/80  
11/80

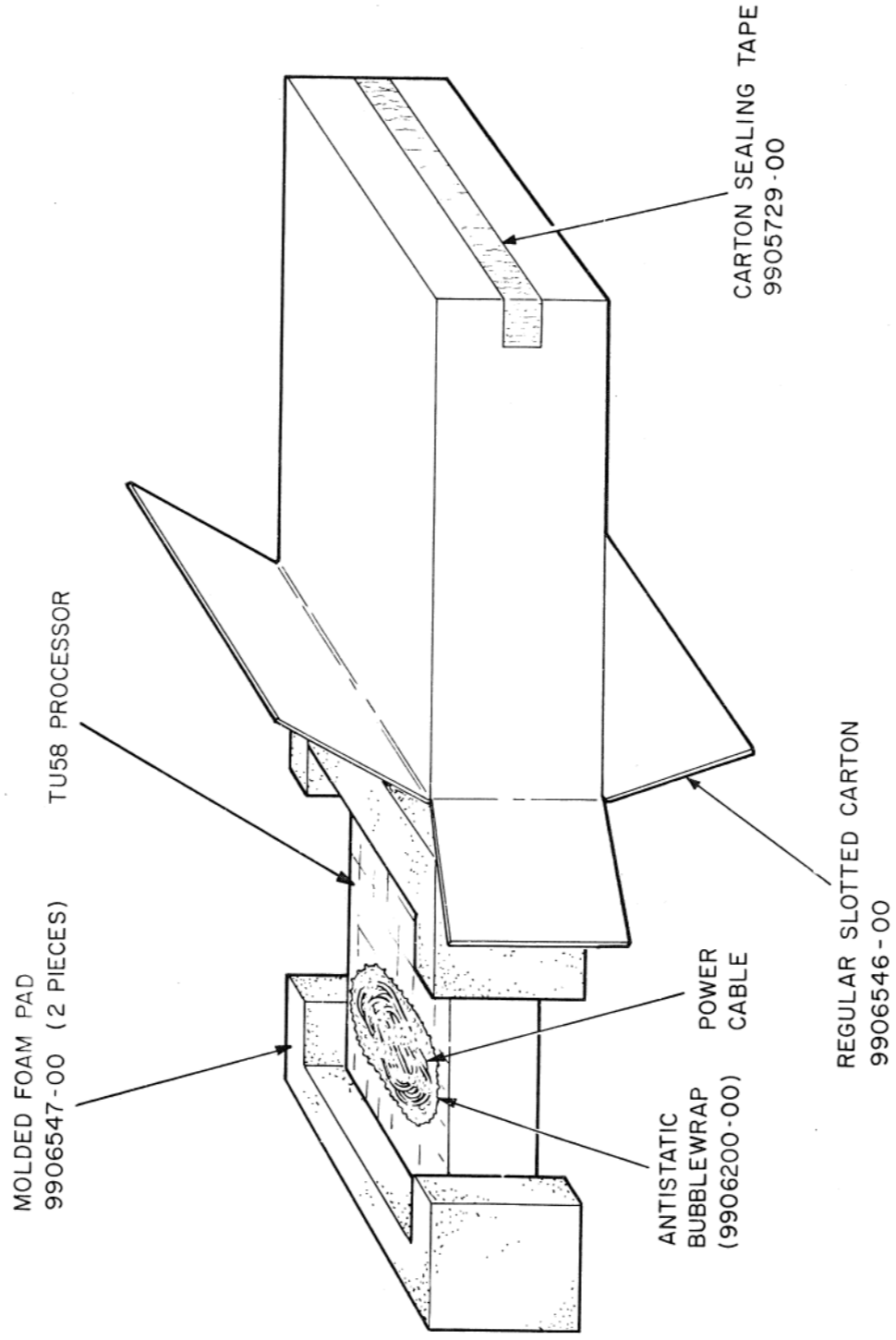


FIGURE 2  
3700490-C1

PACKAGED DIMENSIONS & WEIGHTS	
USA	METRIC
WEIGHT	13 lb. 5.9 KILO
LENGTH	18 in. 457.2 mm
WIDTH	10 in. 255.6 mm
HEIGHT	20 in. 504.8 mm
CUBE	2.1 cu. ft. .06 cu. m
DENSITY	6.3 lb/cu. ft. 100.3 Kg/cu. m

NOTE: Make changes on "C" size original only and rephotograph

ENG.	DATE	SIZE	CODE	NUMBER	REV
	10/2/79	C	SP	3700490-0-0	B
APPD.	<i>M.B. Roberts</i>				

DRC-108



# PACKAGING INSTRUCTION

TITLE

PKG PROCESSOR SB11, TU58, TUS58

REV:

A  
B

DATE:

3/80  
11/80

Manufacture or sale of items without written permission.

MOLDED FOAM PAD  
9906547-00 (2 PIECES)

ONE PIECE FOLDER (9906663-00)  
(CONTAINS SPARE PARTS)

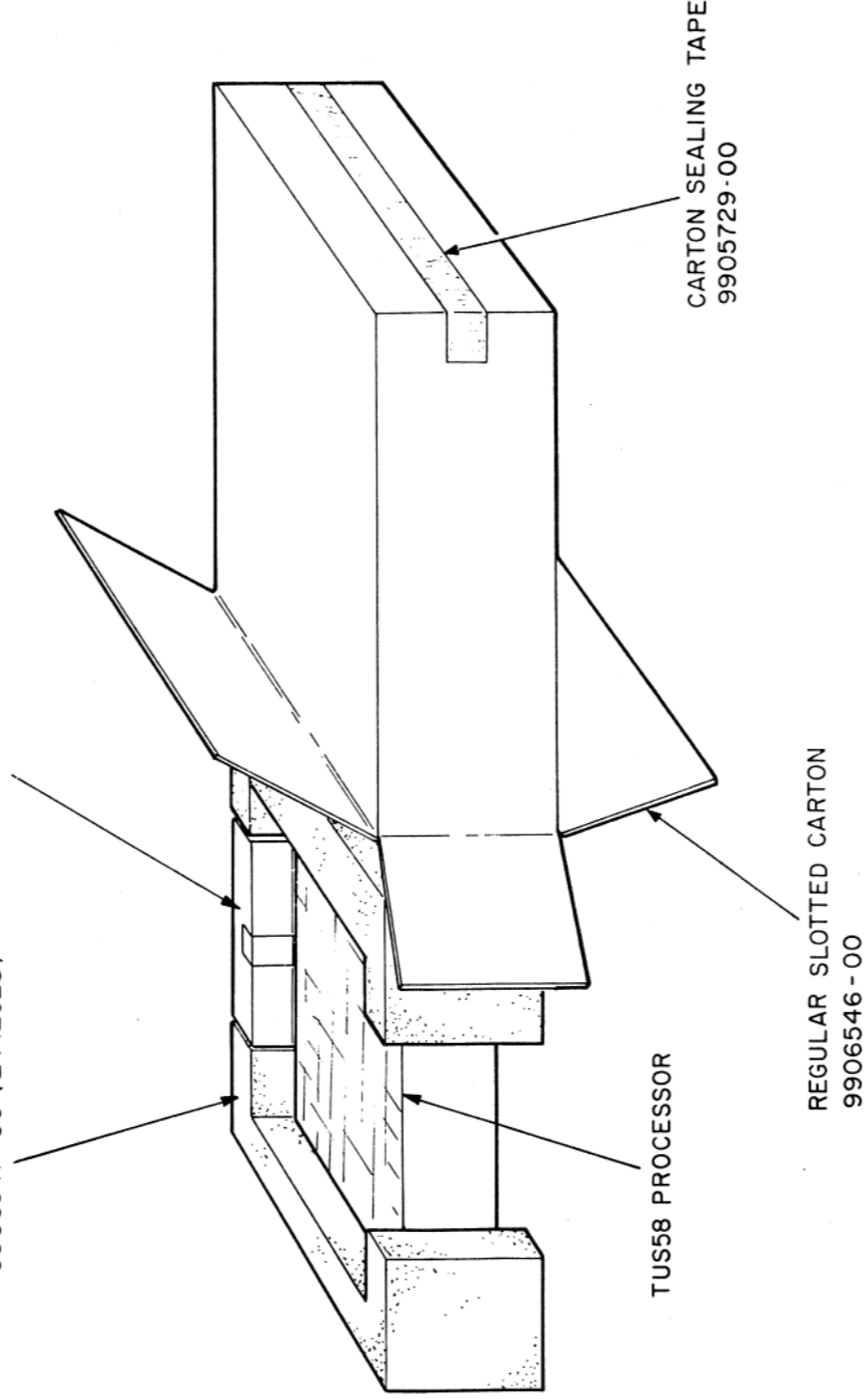


FIGURE 3  
3700490-02

PACKAGED DIMENSIONS & WEIGHTS	
USA	METRIC
WEIGHT	15.5 lb. 7.0 KILO
LENGTH	18 in 457.2 mm.
WIDTH	10 in. 255.6 mm.
HEIGHT	20 in. 504.8 mm.
CUBE	2.1 cu. ft. .06 cu. m
DENSITY	6.3 lb/cu. ft 100.3 Kg/cu. m

NOTE: Make changes on "C" size original only and rephotograph

ENG.

APPD.

DATE

10/2/79

SIZE

C

CODE

SP

NUMBER

3700490-0-0

REV

B

DRC-108

SHEET 6 OF 7

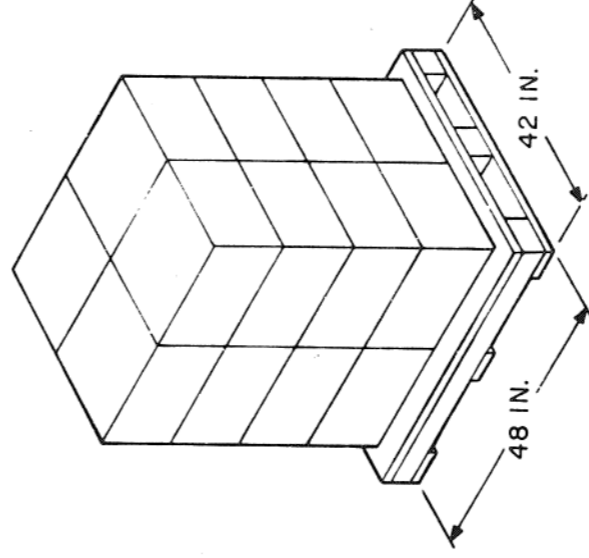
This drawing and specifications, herein, are the property of Digital Equipment Corporation and shall not be reproduced or copied or used in whole or in part as the basis for the manufacture or sale of items without written permission.

# PACKAGING INSTRUCTION

## TITLE

PKG PROCESSOR SB11, TU58, TU58L, TUS58

REV: A \_\_\_\_\_ DATE: 3/80  
 B \_\_\_\_\_ 11/80



4 CARTON PER TIER  
 4 TIERS HIGH  
 16 CARTONS PER PALLET

### LOAD DETAIL

#### FIGURE 4

3700490-00  
 3700490-01  
 3700490-02

DIMENSIONS & WEIGHTS	
USA	METRIC
WEIGHT	258 lb. 117.03 KILO
LENGTH	48 in. 1219 mm.
WIDTH	42 in. 1067 mm.
HEIGHT	44 in. 1118 mm.
CUBE	51.3 cu. ft. 1.45 cu. m
DENSITY	5.03 lb/cu. ft. 80.58 Kg/cu. m

NOTE: Make changes on "C" size original only and rephotograph

ENG. <i>[Signature]</i>	APPD. <i>[Signature]</i>	DATE <i>11/80</i>	SIZE C	CODE SP	NUMBER 3700490-0-0	REV B
-------------------------	--------------------------	-------------------	-----------	------------	-----------------------	----------

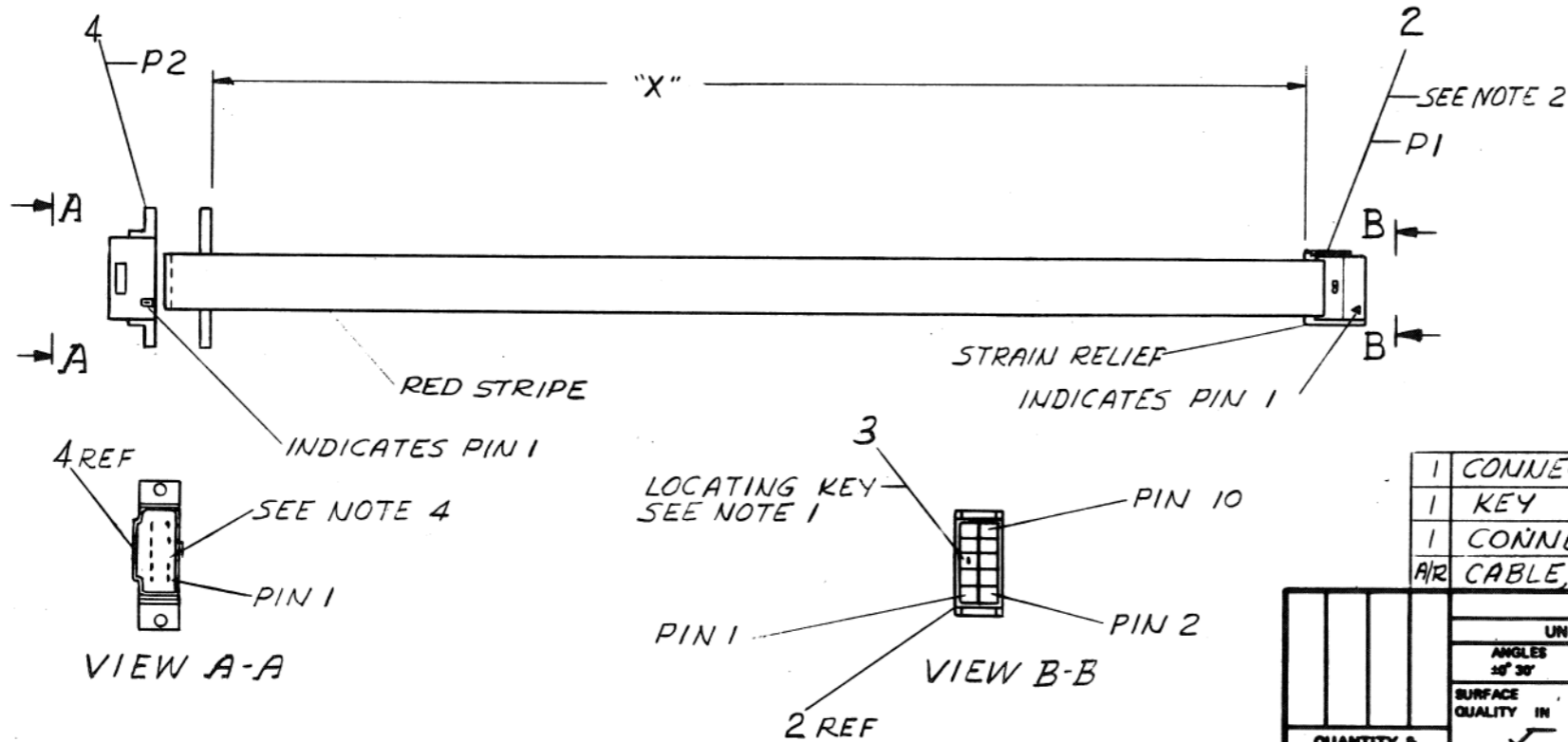
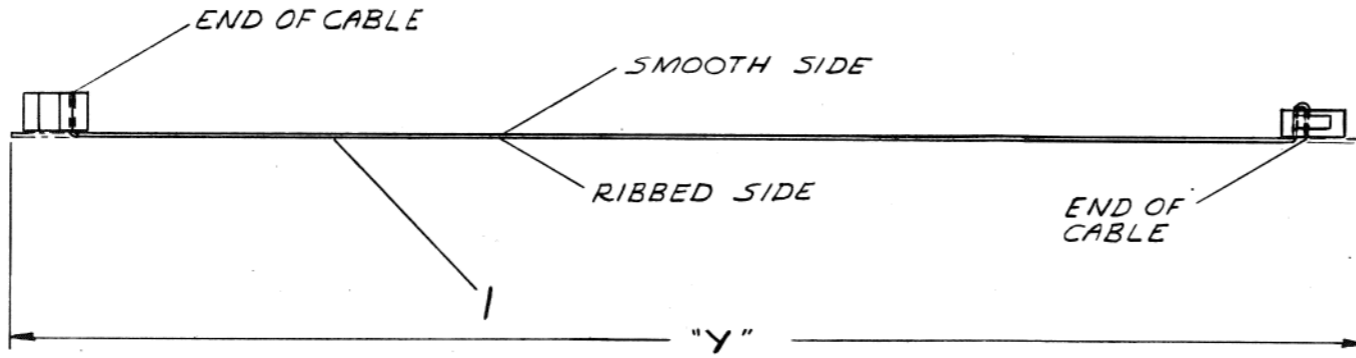
DRC-108

"THIS DRAWING AND SPECIFICATIONS, HEREIN, ARE THE PROPERTY OF DIGITAL EQUIPMENT CORPORATION AND SHALL NOT BE REPRODUCED OR COPIED OR USED IN WHOLE OR IN PART AS THE BASIS FOR THE MANUFACTURE OR SALE OF ITEMS WITHOUT WRITTEN PERMISSION. COPYRIGHT © 1978, DIGITAL EQUIPMENT CORPORATION"

NUMBER	DIM "X" VARIATION	DIM "Y" (PRECUT)
7016305-03	3 FT ± 1.0 IN.	3 FT. 3 IN.
7016305-1F	1 FT 6 IN ± 1.0 IN.	1 FT 9 IN.

NOTES

1. INSERT KEY IN #5 CONNECTOR PIN HOLE AND BREAK OFF TAB
2. USE CRIMP PRESS 3M # 3440 OR #3445 AND LOCATER GUIDE 3M #3443-9 TO CRIMP ITEM #2.
3. USE AMP. LATCH PIN TOOLING ASSY. #91140-2 WITH MANUAL UNIT #91085-2 OR PNEU. UNIT #91112-2 TO ATTACH ITEM 4 TO CABLE.
4. REMOVE PIN #5 FROM CONNECTOR ITEM #4 BEFORE ASSEMBLY WITH CABLE.



DESCRIPTION	DWG./PART NO.	ITEM NO.
CONNECTOR, CRIMP	1213039-02	4
KEY	9009707-00	3
CONNECTOR, CRIMP	1211206-02	2
CABLE, 10 CONDUCTOR	9107747-02	1

UNLESS OTHERWISE SPECIFIED DIMENSIONS ARE IN INCHES		NOMINAL DIMENSION RANGE INCHES						
ANGLES ± 30°	CLASS OF ACCURACY (CHECK ONE)	OVER 0 TO 0.2	OVER 0.2 TO 1.2	OVER 1.2 TO 4.0	OVER 4.0 TO 12.0	OVER 12.0 TO 48.0	OVER 48.0 TO 96.0	
	MEDIUM <input type="checkbox"/>	±.004	±.008	±.012	±.016	±.024	±.04	
	PREFERRED <input type="checkbox"/>	±.012	±.016	±.025	±.04	±.063	±0.1	

THIRD ANGLE PROJECTION

REMOVE BURRS AND BREAK SHARP CORNERS

DO NOT SCALE DWG

MATERIAL SEE PARTS LIST

FINISH

QUANTITY & VARIATION

DRN. 5/28/78

CHK'D. R. B. / 11/01/78

ENG. P. B. / 11/01/78

PROJ. ENG. M. S. / 11/01/78

PROD. J. B. / 11/01/78

FIRST USED ON TU58

TITLE CABLE, SERIAL: TU58

SIZE CODE C IA

NUMBER 7016305-0-0

REV. A

SHEET 1 OF 1

DIST.

REV.	CHANGE NO.	DATE	BY
A	TU58C-MLO03	10/10/78	D. WARREN

REVISIONS

900 FORM NO. 900 100-0

C IA 7016305-00

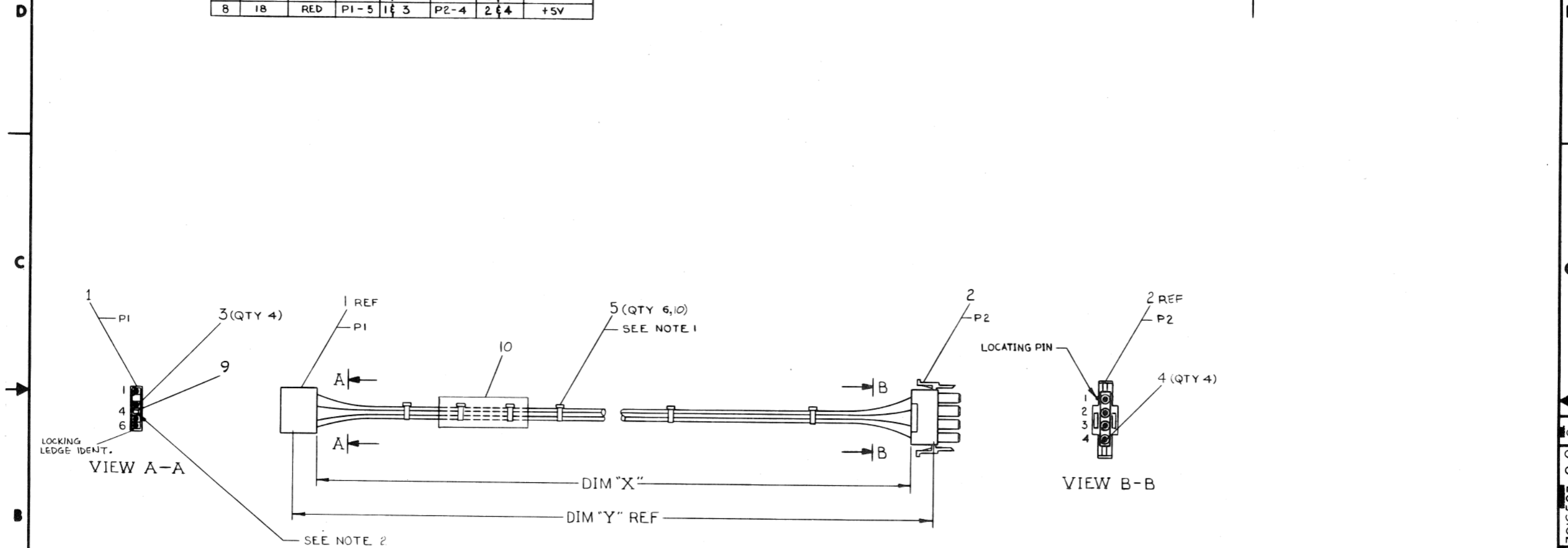
0-0-2299102 2

THIS DRAWING AND SPECIFICATIONS, HEREIN, ARE THE PROPERTY OF DIGITAL EQUIPMENT CORPORATION AND SHALL NOT BE REPRODUCED OR TRANSMITTED IN ANY FORM OR BY ANY MEANS, ELECTRONIC OR MECHANICAL, INCLUDING PHOTOCOPYING, RECORDING, OR BY ANY INFORMATION STORAGE AND RETRIEVAL SYSTEM, WITHOUT THE WRITTEN PERMISSION OF DIGITAL EQUIPMENT CORPORATION. © 1978, DIGITAL EQUIPMENT CORPORATION.

WIRE TABLE							
ITEM NO	DESCRIPTION	FROM	TO	REMARKS			
6	18 BLU	P1-1 1#3	P2-1 2#4	+12V			
7	18 BLK	P1-3 1#3	P2-2 2#4				
7	18 BLK	P1-6 1#3	P2-3 2#4				
8	18 RED	P1-5 1#3	P2-4 2#4	+5V			

LEGEND		
NUMBER	DIM "X" VARIATION	DIM "Y" (PRECUT) REF
7016527-02	2 FT - ± 1.0 IN	2 FT - 5 IN
7016527-01	1 FT - ± 1.0 IN	1 FT - 5 IN
7016527-1F	1 FT 6 IN ± 1.0 IN	1 FT - 11 IN

NOTES:  
 1. ATTACH CABLE TIE (ITEM 5) APPROXIMATELY EVERY 3" AS SHOWN.  
 2. INSERT KEY PLUG (ITEM 9) INTO POSITION 4 FROM THIS END.



CAUTION OFF SHEETS PARTS LIST EXIST B-PL-7016527-0-0

REV.	REV.	DESCRIPTION
1	A	7016527-ML001
2	B	7016527-ML002
3	C	7016527-ML003
4	D	7016527-ML004

DESCRIPTION	DWG. PART NO.	ITEM NO.
UNLESS OTHERWISE SPECIFIED DIMENSIONS ARE IN INCHES		
ANGLES MIN 20°	CLASS OF ACCURACY (CHECK ONE)	NOMINAL DIMENSION RANGE INCHES
SURFACE QUALITY IN MICRONS	MEDIUM	0.001 - 0.005
QUANTITY & VARIATION	PREFERRED	0.005 - 0.010
THIRD ANGLE PROJECTION	DRN. <i>[Signature]</i> 2/2/78	FIRST USED ON TU58
REMOVE BURRS AND BREAK SHARP CORNERS	CHKD. <i>[Signature]</i> 7/78	TITLE CABLE, TU58 SUPPLY OUTPUT
DO NOT SCALE DWG	ENG. <i>[Signature]</i> 10/12/78	SIZE CODE D
MATERIAL SEE PARTS LIST	PROD. <i>[Signature]</i> 1/11/78	NUMBER IA 7016527-0-0
FINISH NONE	NEXT HIGHER ASSEMBLY	REV. C
	D-AD-7016078-0-0	
	SCALE 1/1	
	SHEET OF DIST.	

"THE MATERIAL HEREIN IS FOR INFORMATION PURPOSES ONLY AND IS SUBJECT TO CHANGE WITHOUT NOTICE. DIGITAL EQUIPMENT CORPORATION ASSUMES NO RESPONSIBILITY FOR ANY ERRORS WHICH MAY APPEAR HEREIN."

# DRAWING DIRECTORY

"THIS DRAWING AND SPECIFICATIONS, HEREIN, ARE THE PROPERTY OF DIGITAL EQUIPMENT CORPORATION AND SHALL NOT BE REPRODUCED OR COPIED OR USED IN WHOLE OR IN PART AS THE BASIS FOR THE MANUFACTURE OR SALE OF ITEMS WITHOUT WRITTEN PERMISSION. COPYRIGHT © 1980 DIGITAL EQUIPMENT CORPORATION."

## UNIT VARIATIONS

VAR	TITLE
TU58-EX	POWERED DUAL DRIVE ASSY

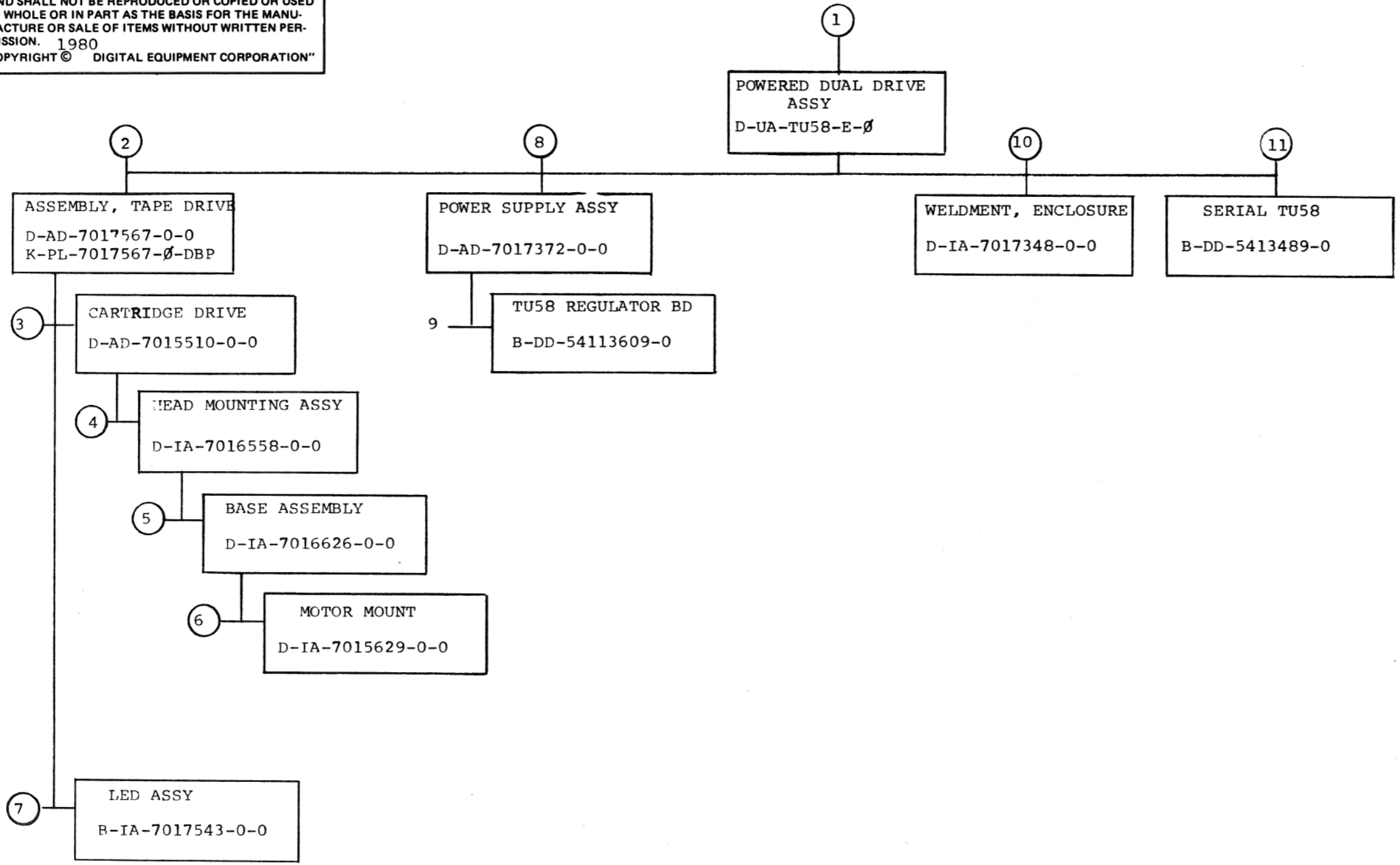
REVISIONS	CHANGE NO.	REV.
INITIALIZE	A	
	B	

CHK: *None*

INITIALIZE: TU58E-ML001

USED ON OPTION/MODEL	DRN. <i>James Sicard</i>	DATE	TITLE			
TU58-EA		21 JAN 80	digital			
	CHK'D <i>E. Walls</i>	DATE	POWERED DUAL DRIVE ASSY			
		16 MAR 80				
	PROJ. ENG. <i>E. Walls</i>	DATE	SIZE	CODE	NUMBER	REV
		26 MAR 80	B	DD	TU58-E	3
	PROD <i>Dee Bats</i>	DATE	DIST.			
		26 MAR 80				
SHEET 1 OF 4						

"THIS DRAWING AND SPECIFICATIONS, HEREIN, ARE THE PROPERTY OF DIGITAL EQUIPMENT CORPORATION AND SHALL NOT BE REPRODUCED OR COPIED OR USED IN WHOLE OR IN PART AS THE BASIS FOR THE MANUFACTURE OR SALE OF ITEMS WITHOUT WRITTEN PERMISSION. 1980  
COPYRIGHT © DIGITAL EQUIPMENT CORPORATION"



TITLE POWERED DUAL DRIVE ASSY	SHEET 2 OF 4	SIZE CODE B DD	NUMBER TU58-E	REV R
----------------------------------	--------------	-------------------	------------------	----------

FIND NO.	DRAWING NO.	DESCRIPTION	TYPE	FIND NO.	DRAWING NO.	DESCRIPTION	TYPE		
1	MPØ1Ø14	TU58-E FIELD MAINTENANCE PRINT SET (MP)	-						
	B-TC-TU58-E-1	TU58-E FIELD MAINTENANCE PRINT SET (TC)	-						
	D-UA-TU58-EA-Ø	POWERED DUAL DRIVE ASSY	E/M						
	D-IA-7016305-0-0	CABLE, I/O	M						
	D-IA-7016527-0-0	CABLE, TU58 SUPPLY OUTPUT	E/M						
	D-IA-7423656-0-0	PLATE BOTTOM	M						
	A-SP-TU58-E-2	ENGINEERING SPECIFICATION							
2	D-AD-7017567-0-0	ASSEMBLY TAPE DRIVE	E/M						
	D-IA-7423305-0-0	PLATE, TAPE DRIVE							
	B-MD-7424101-0-0	WASHER	E/M						
	K-PL-7017567-Ø-DBP	ASSEMBLY, TAPE DRIVE (PL)	E/M	6	D-IA-7015629-0-0	MOTOR MOUNT	M		
	B-MD-7424084-0-0	SCREW, SHOULDER	M		C-MD-7420653-0-0	SPRING, TORSION	M		
				7	B-IA-7017543-0-0	LED ASSEMBLY	E/M		
3	D-AD-7015510-0-0	CARTRIDGE DRIVE	E/M	8	B-PL-7017372-0-0	POWER SUPPLY ASSY (PL)	E/M		
	C-MD-7420645-0-0	LOCK ROLLER	M		D-AD-7017372-0-0	POWER SUPPLY ASSY	E/M		
	B-MD-7423356-0-0	BUTTON, SUPPORT	M		C-IA-7423655-0-0	SHIELD, PROTECTIVE	M		
	C-MD-7420651-0-0	HUB, ENCODER	M		D-IA-7423654-0-0	BRACKET, POWER SUPPLY	M		
	B-MD-7420652-0-0	CLAMP	M						
	C-MD-7420649-0-0	WHEEL, CODE	M						
	D-IA-7016017-0-0	CABLE, TAPE DRIVE	M						
	C-MD-7423412-0-0	SPRING, BEVEL	M						
	C-MD-7421491-0-0	CLAMP, CABLE	M						
	C-MD-7423355-0-0	SPRING, SUPPORT	M						
	C-MD-7423354-0-0	WASHER	M	9	B-DD-5413609-0-0	TU58 REGULATOR BD	E/M		
4	D-IA-7016558-0-0	HEAD MOUNTING ASSY	M						
TYPE: E ELECTRICAL M MECHANICAL E/M ELECTRO/MECHANICAL			digital		TITLE POWERED DUAL DRIVE ASSY	SHEET 3 OF 4	SIZE CODE B DD	NUMBER TU58-E	REV B

DRB 106A

FIND NO.	DRAWING NO.	DESCRIPTION	TYPE	FIND NO.	DRAWING NO.	DESCRIPTION	TYPE
10	D-IA-7017348-0-0	WELDMENT, ENCLOSURE	M				
	E-IA-7423308-0-0	ENCLOSURE	M				
	C-IA-7423310-0-0	BRACKET, CONN MTG	M				
11	B-DD-5413489-0	SERIAL TU58	E/M				

TYPE: E ELECTRICAL  
 M MECHANICAL  
 E/M ELECTRO/MECHANICAL



TITLE POWERED DUAL DRIVE ASSY

SHEET 4 OF 4

SIZE B DD

NUMBER TU58-E

REV B





# PARTS LIST

## QUANTITY / VARIATION

### NOTES:

- 1) Item 8 & 12 to be shipped inside Item 9
- 2) Item 16 (Variation Tag) is loose piece and is to be installed on unit adjacent to Serial tag.

DRN. DATE *21-JAN-80* DES. ENG. DATE *QWdl 3/26/80* MFG. ENG. DATE *Jch La Bate 3/26/80*  
 CHK'D. DATE *J. Walker 3/26/80* RESP. ENG. DATE *Jch La Bate 3/26-80* NEXT HIGHER DOC.

TU58-EA	TU58-EB	TU58-EC	TU58-ED																
---------	---------	---------	---------	--	--	--	--	--	--	--	--	--	--	--	--	--	--	--	--

### REFERENCE DESIGNATORS

ITEM NO.	DRAWING NO.	PART NO.	DESCRIPTION
1	E-UA-TU58-E-Ø	TU58-EX	POWERED DUAL DRIVE ASSY
2		1700083-09	POWER CORD 115V, 6 AMP
3	A-SP-3700490-0-0	3700490-01	PACKAGING INSTRUCTIONS (TU58)
4	B-PL-7016753-0-0	7016753-00	INSTALLATION ASSY (KIT)
5		3615809-00	MEDIA CARTRIDGE, TU58-K
6		MPØ1Ø14	FIELD MAINT. PRINT SET (TU58-E)
7		1700090-00	POWER CORD 270V, 6 AMP
8		23765A9-00	BOOT CHIP
9		9906228-00	SHIPPING BOX, ROM CHIP SET
10		BC2ØY-25	I/O CABLE
11		BC2ØZ-25	I/O CABLE
12		9007207-00	FUSE, 220V, .38A SLOW BLOW
13	E-K-ØTU58-UG-001	EK-ØTU58-UG	USERS GUIDE
14	B-PL-TU58-E-2	TU58-EC	ACCESSORY KIT
15	B-PL-TU58-E-2	TU58-ED	ACCESSORY KIT
16	A-PS-3615946-0-0	3615946-0-0	VARIATION TAG

1	1	-	-																
-	-	1	1																
-	-	1	1																
-	-	1	1																
-	-	-	2																
-	-	1	1																
-	-	-	1																
-	-	-	1																
-	-	-	1																
-	-	-	1																
-	-	1	1																
-	1	-	-																
-	1	-	-																
-	-	1	1																

ECO NO. ML001

"THIS DRAWING AND SPECIFICATIONS, HEREIN, ARE THE PROPERTY OF DIGITAL EQUIPMENT CORPORATION AND SHALL NOT BE REPRODUCED OR COPIED OR USED IN WHOLE OR IN PART AS THE BASIS FOR THE MANUFACTURE OR SALE OF ITEMS WITHOUT WRITTEN PERMISSION. COPYRIGHT © 1980 DIGITAL EQUIPMENT CORPORATION"

TITLE TU58-E SHIP LIST

ASSY. NO. TU58-EX  
SECTION 1 OF 1

SIZE B CODE PL NUMBER TU58-E-2 REV. B SHEET OF

**digital****PARTS LIST**

QUANTITY / VARIATION

NOTES:

DRN. 1.3.2.40	DES. ENG. <i>Ox Gotke</i>	MFG. ENG. <i>John Fabate</i>
DATE 10-12-79	DATE 7 JAN 1980	DATE 3-10-80
CHK'D. <i>Ox Gotke</i>	RESP. ENG. <i>J. Walls</i>	NEXT HIGHER DOC.
DATE 1-1-80	DATE 7 JAN 1980	

ITEM NO.	DRAWING NO.	PART NO.	DESCRIPTION	QUANTITY	VARIATION	REFERENCE DESIGNATORS
1		1616062-00	TRANSFORMER, POWER	1		
2		1212170-00	CONTACT FEMALE (SOCKET)	4		
3		1212167-06	CONNECTOR, PLUG, 6 PIN	1		
4		9007930-00	RING TERMINAL RED #10	1		
5	C-MD-7423655-0-0	7423655-00	SHIELD, PROTECTIVE	1		
6		1215905-00	POWER RECEPTACLE AND LINE FILTER	1		
7		1216901-00	DPDT SWITCH (115-230V)	1		
8		1216391-	FUSE HOLDER (20A-300V)	1		
9		1211237-00	FUSE, .750A, 250V, SLO BLOW	1		
10		9107305-02	TUBING, SHRINK (RED)	A/R		
11	D-UA-5413609-0-0	5413609-00	REGULATOR BOARD	1		
12	D-IA-7423654-0-0	7423654-00	BRACKET, POWER SUPPLY	1		
13		9006664-00	WASHER, FLAT #10	1		
14		9006565-00	NUT, KEP #10-32	1		
15		9107560-03	WIRE, BUSS #18 AWG	A/R		
16		9006022-02	SCREW, FLAT, HD, PHL, #6-32 x 3/8	3		
17		9006022-01	SCREW, PAN HD, PHL, 6-32 x 3/8	2		
18		9009280-00	NUT, HEX #4-40	2		
19		9007649-00	WASHER, LOCK EXTERNAL TOOTH #6	2		
20		9006659-00	WASHER, FLAT, #6	2		

ECO NO.  
INIT. A

"THIS DRAWING AND SPECIFICATIONS, HEREIN, ARE THE PROPERTY OF DIGITAL EQUIPMENT CORPORATION AND SHALL NOT BE REPRODUCED OR COPIED OR USED IN WHOLE OR IN PART AS THE BASIS FOR THE MANUFACTURE OR SALE OF ITEMS WITHOUT WRITTEN PERMISSION.  
COPYRIGHT © 1980 DIGITAL EQUIPMENT CORPORATION"

TITLE  
POWER SUPPLY ASSY

ASSY. NO.  
D-AD-7017372-0-0  
SECTION 1 OF 1

SIZE CODE NUMBER  
B PL 7017372-0-0

REV.  
A

SHEET 1 OF 2



# PARTS LIST

## QUANTITY / VARIATION

NOTES:

DRN. DATE <i>Robert J. Taylor</i> <i>10 27 89</i>	DES. ENG. DATE <i>D. K. Latta</i> <i>7 JAN 90</i>	MFG. ENG. DATE <i>J. deBorja</i> <i>26 MAR 1989</i>
CHK'D. DATE <i>W. Latta</i> <i>7 JAN 90</i>	RESP. ENG. DATE <i>D. K. Latta</i> <i>7 JAN 90</i>	NEXT HIGHER DOC.

ITEM NO.	DRAWING NO.	PART NO.	DESCRIPTION	QUANTITY	VARIATION	REFERENCE DESIGNATORS
21		9006560-00	NUT, KEP 6-32	4		
22		3616053-00	DECAL, HIGH VOLTAGE	1		
23		9007031-00	TIE, CABLE	2		
24		3615998-00	NEUTRAL, STICKER	1		
25		3612680-01	GROUND STICKER	1		
26		9107410-54	WIRE, STRD., #18 AWG, GRN/YEL	A/R		
27		9107360-11	WIRE, STRD., #18 AWG BROWN	A/R		
28		1216552-00	SWITCH, 250 VAC	1		
29		9107360-99	WIRE, STRD #18 AWG WHITE	A/R		
30		9007970-00	TERM, QUICK CONN RED 22-18 AWG	4		
31		9008268-00	THERMAL COMPOUND	A/R		
32		9006666-00	WASHER, FLAT #8	4		
33		9006563-00	NUT, KEP #8-32	4		

ECO NO.

"THIS DRAWING AND SPECIFICATIONS, HEREIN, ARE THE PROPERTY OF DIGITAL EQUIPMENT CORPORATION AND SHALL NOT BE REPRODUCED OR COPIED OR USED IN WHOLE OR IN PART AS THE BASIS FOR THE MANUFACTURE OR SALE OF ITEMS WITHOUT WRITTEN PERMISSION.  
COPYRIGHT © 1989 DIGITAL EQUIPMENT CORPORATION"

TITLE

POWER SUPPLY ASSY

ASSY. NO.

D-AD-7017372-0-0

SIZE

B

CODE

PL

NUMBER

7017372-0-0

REV.

A

SECTION 1 OF 1

SHEET 2 OF 2