

ILLUSTRATED PARTS BREAKDOWN

TU58 CARTRIDGE TAPE DRIVE

HOW TO USE THE IPB

GENERAL

This IPB is compiled following the organization and nomenclature of the engineering drawing structure.

MAJOR ASSEMBLY LOCATOR

The Major Assembly Locator (first illustration) is an index that provides a description and a figure reference for all illustrations used in this manual.

INDENTED PARTS LIST

This manual identifies each assembly being broken down (figure reference callout), and all parts of that assembly. Further breakdown of an assembly is shown by an asterisk (*) preceding the item callouts in the Description Column. The number of asterisks preceding an item is used to denote the subordination of that item with respect to the Major Assembly. A single asterisk preceding an item description indicates that the item is part of the major assembly being illustrated. Items that are subordinate to single asterisks items, are denoted by two asterisks (**) and immediately follow the related single asterisk item. Additional asterisks are used, as required, to denote further subordination. This system of part identification, provides a means for the user to identify the next higher assembly item and make alternate selections for parts when the required replacement part or assembly is not immediately available.

COLUMN CALLOUT DESCRIPTION

Figure & Item — Indicates the figure number and item number of each part.

Description — Lists the name of the part and pertinent specifications (when required). Asterisks preceding the description denote the subordination of the part to the next higher assembly.

DEC Part No. — Lists the DEC part ordering number. A blank in this column indicates a DEC part number was not assigned at the time of publication.

ECO Cut-In — The notation at the top of this column indicates the ECO level of the system (option), at which the IPB was initially prepared. Subsequent ECO level designations, that modify existing parts or add new parts to the device, are inserted in the ECO Cut-In column next to the part that is added or modified. A bracket ([]) preceding the item description is used to indicate the parts affected by ECO's.

Vendor Code/Part No. — Indicates vendor parts that are not stocked by DEC. Refer to the Field Service Spares Catalog (vendor part number to DEC part number) for the vendor code cross-reference.

Used On Code — Letters in this column correspond to the variation codes assigned in Figure 1. Parts with an Alpha notation(s) are used only in those option variations. A blank indicates that the part is used on all option variations.

Ref Fig No. — A cross reference between illustrations. For each Major Assembly, the number in this column denotes the figure of the next higher assembly. For all subassemblies, the number in this column denotes the figure showing additional detailed breakdown.

SYMBOL USAGE

Hardware Designators — Alpha designators for screws (S), washers (W), nuts (N), and retaining rings (R) are inserted after the item number callouts on the illustration when stacked item numbers are used.

Attaching Hardware — The @ symbol is inserted before any part that is used as attaching hardware. Attaching hardware is denoted as those parts that are not an integral part of the referenced assembly.

(NFR) Not Field Repairable — The (NFR) symbol is inserted after any assembly that is not to be field dismantled.

Other Symbols — Any other symbols that are required for kits, accessories, etc., will be explained and appear as part of the item description.

REVISION HISTORY

OTHER IPB MANUALS REQUIRED TO SUPPORT THIS OPTION

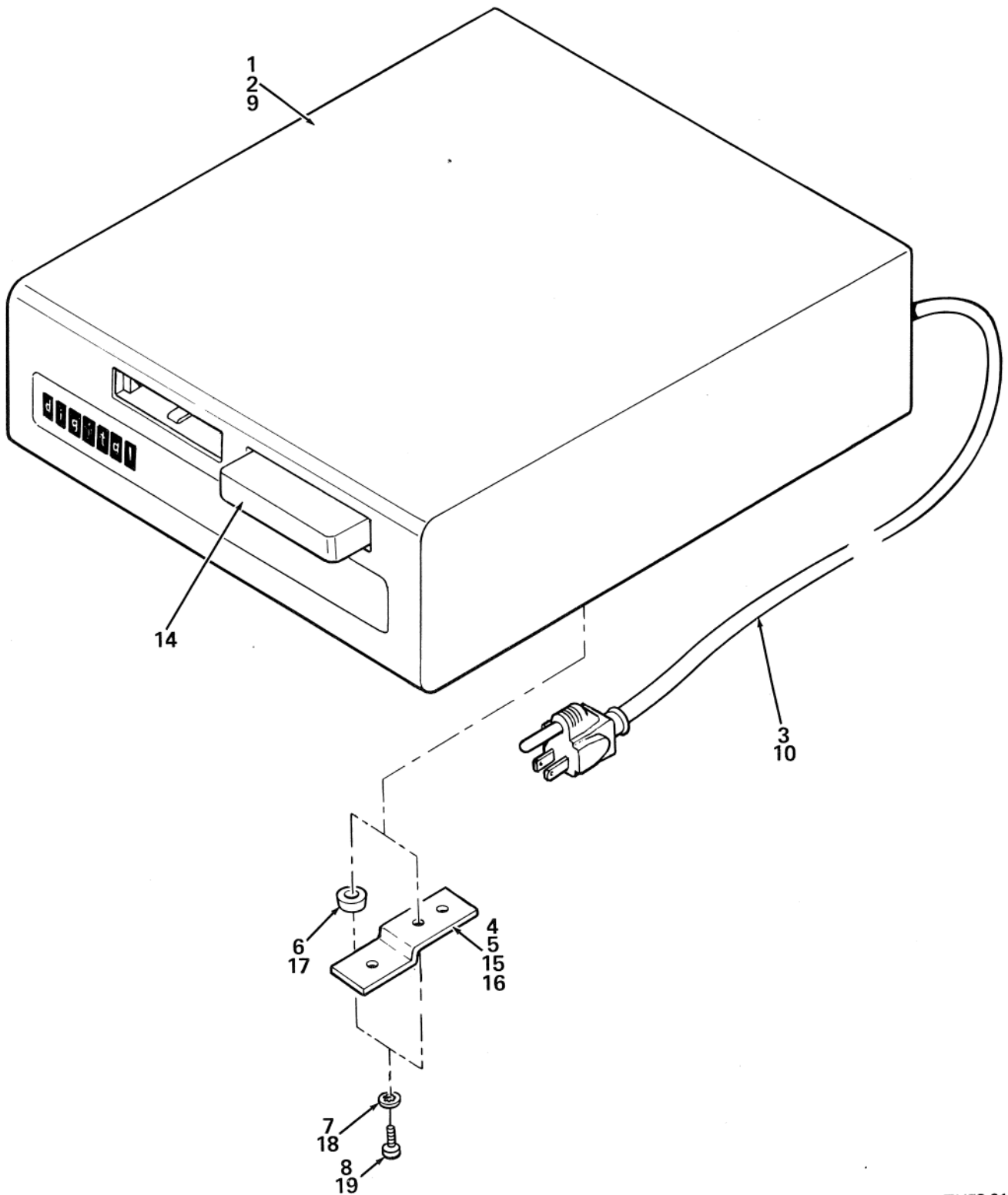
PRINTING	ECO LEVEL	DATE	PAGES AFFECTED	
2nd Printing	TU58-E 00002-00002 TU58-V 00002-00002 70-17567 00000-00000 TU58-XA 00004-00004 70-15510 TU58-XA-00004 70-17372 00000-00000 TU58-C 00002-00002 70-15854 70-15923-00002 70-16527 00001-00001 70-16078 00000-00000 70-16017 00001-00001 70-17568 00001-00001 70-17569 00000-00000 70-17347 00000-00000	12-1-80	N/A	N/A
				This 2nd Printing EK-OTU58-IP-002 SUPERSEDES 3rd Printing EK-OTU58-IP-001

Copyright © 1979, 1980 by Digital Equipment Corporation. All rights reserved.

DEC reserves the right, without notice, to make substitutions and modifications in the specifications of products documented in this manual and further reserves the right to withdraw any of these products from the market without notice.

DEC is not responsible for errors which may appear in the technical description (including illustrations and photographs) of the products covered by this manual.

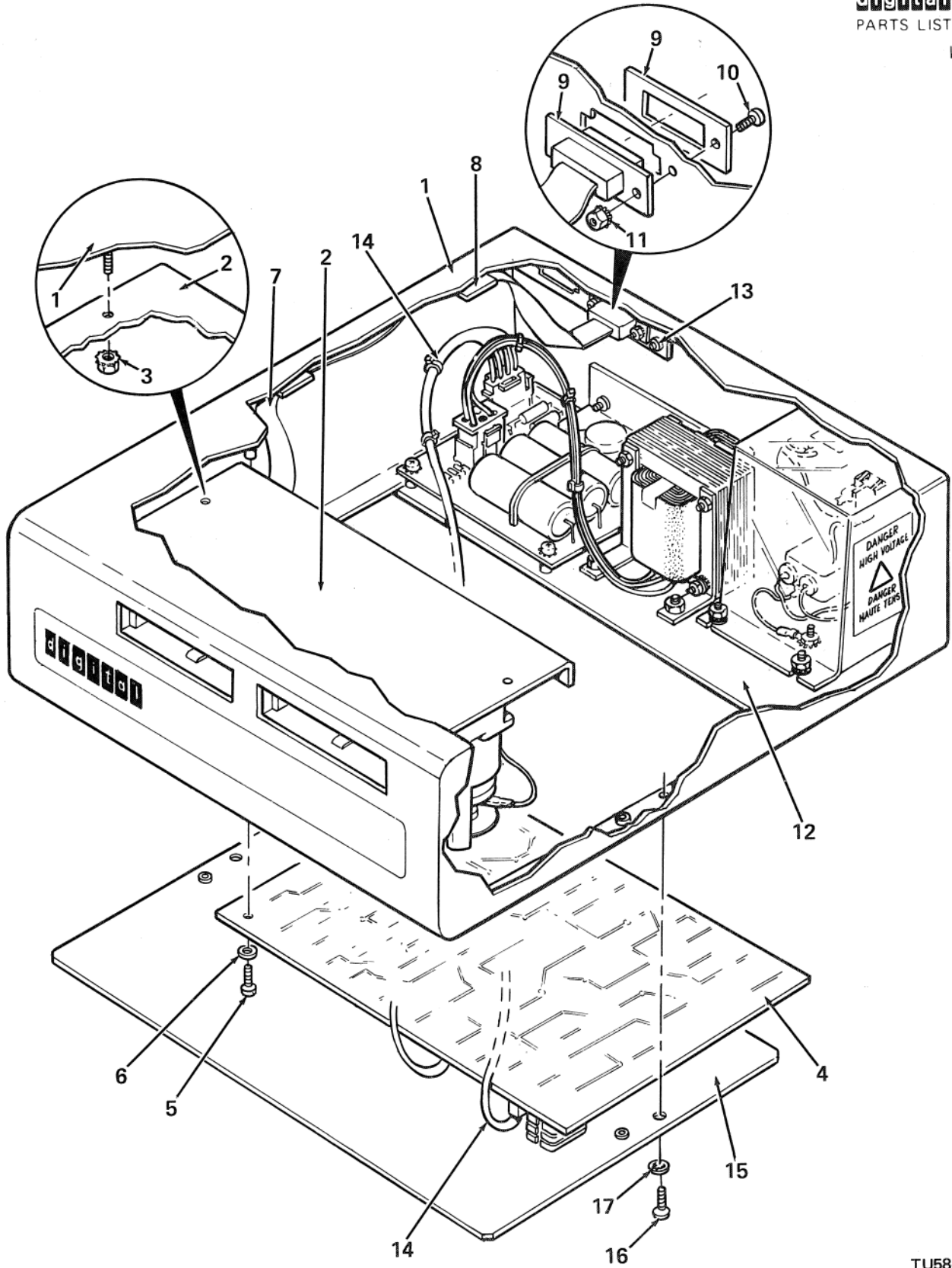
None of the descriptions contained in this manual imply the granting of any license whatsoever to make, use or sell equipment constructed in accordance therewith.



TU58-01

Figure 1. TU58 Powered Dual Drive Assembly

FIG. & ITEM NO.	DESCRIPTION	DEC PART NO.	ECO CUT-IN TU58-E 00002	USED ON CODE	REF FIG NO.
1-	TU58 POWERED DUAL DRIVE ASSEMBLY				
	Code A – Used on Model TU58-EA (without I/O cables)	TU58-EA		A	
	Code B – Used on Model TU58-EB (with I/O cables)	TU58-EB		B	
1	*TU58 POWERED DUAL DRIVE ASSEMBLY	TU58-EX			2
2	*ACCESSORY KIT	TU58-EC		A	
3	**Cord, Power 115V	17-00083-09		A	
4	**INSTALLATION ASSEMBLY	70-16753-00		A	
5	***Bracket, Mounting	74-22173-00		A	
6	***Bumper, Rubber	90-08190-00		A	
7	***Washer, Int. Tooth Lock No. 10	90-06635-00		A	
8	***Screw, Phl Pan Hd No. 10-32 x .38	90-06071-01		A	
9	*ACCESSORY KIT	TU58-ED		B	
10	**Cord, Power 115V	17-00083-09		B	
	**Cord, Power 270V	17-00090-00		B	
11	**Chip, Boot (Not Shown)	23-765A9-00		B	
12	**I/O Cable (Not Shown)	BC20Y-25		B	
	**I/O Cable (Not Shown)	BC20Z-25		B	
13	**Fuse, 220V .38A Slo-Blo (Not Shown)	90-07207-00		B	
14	**Media Cartridge	36-15809-00		B	
15	**INSTALLATION ASSEMBLY	70-16753-00		B	
16	***Bracket, Mounting	74-22173-00		B	
17	***Bumper, Rubber	90-08190-00		B	
18	***Washer, Int. Tooth Lock No. 10	90-06635-00		B	
19	***Screw, Phl Pan Hd No. 10-32 x .38	90-06071-01		B	

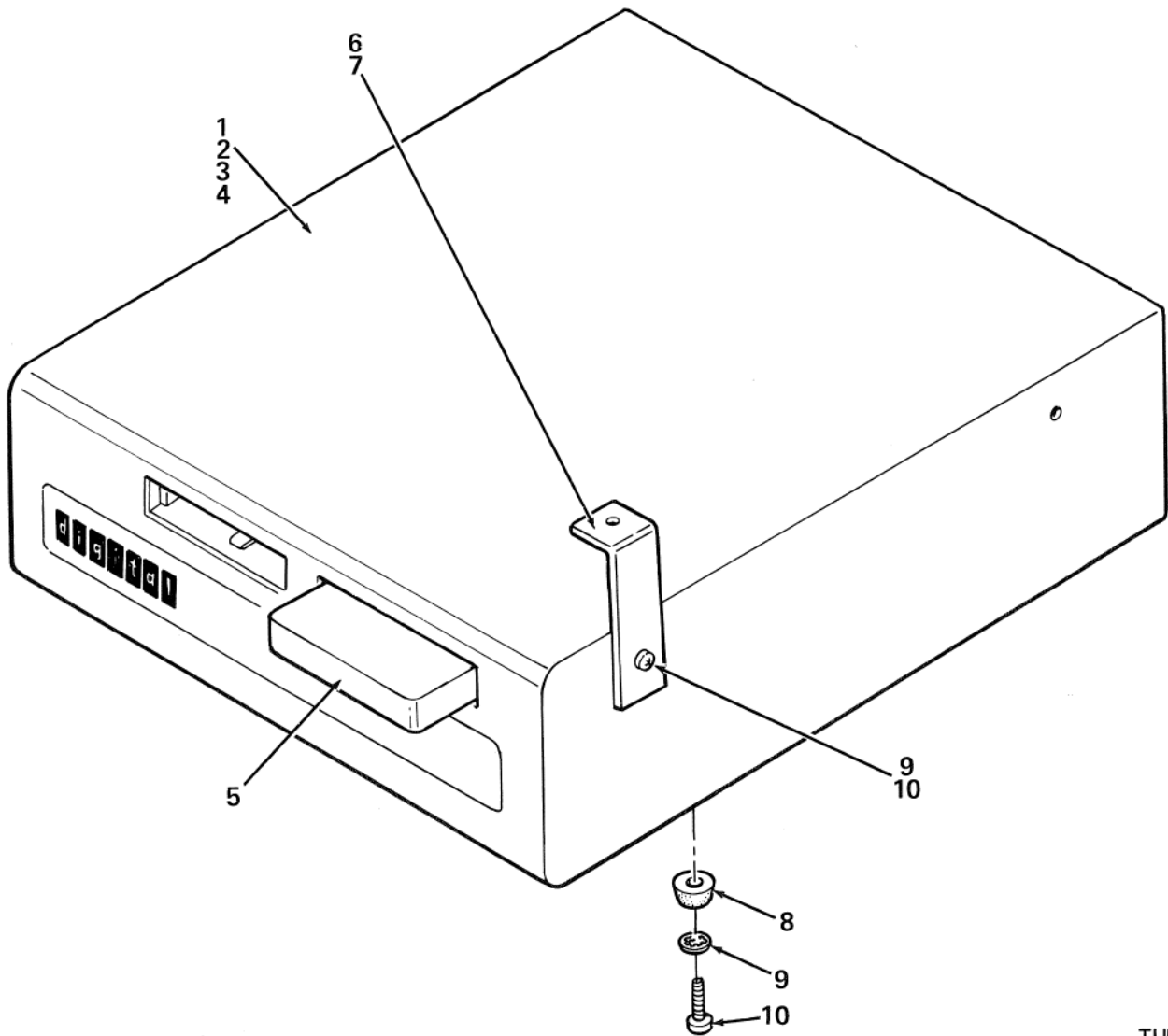


TU58-02

Figure 2. TU58 Powered Dual Drive Assembly

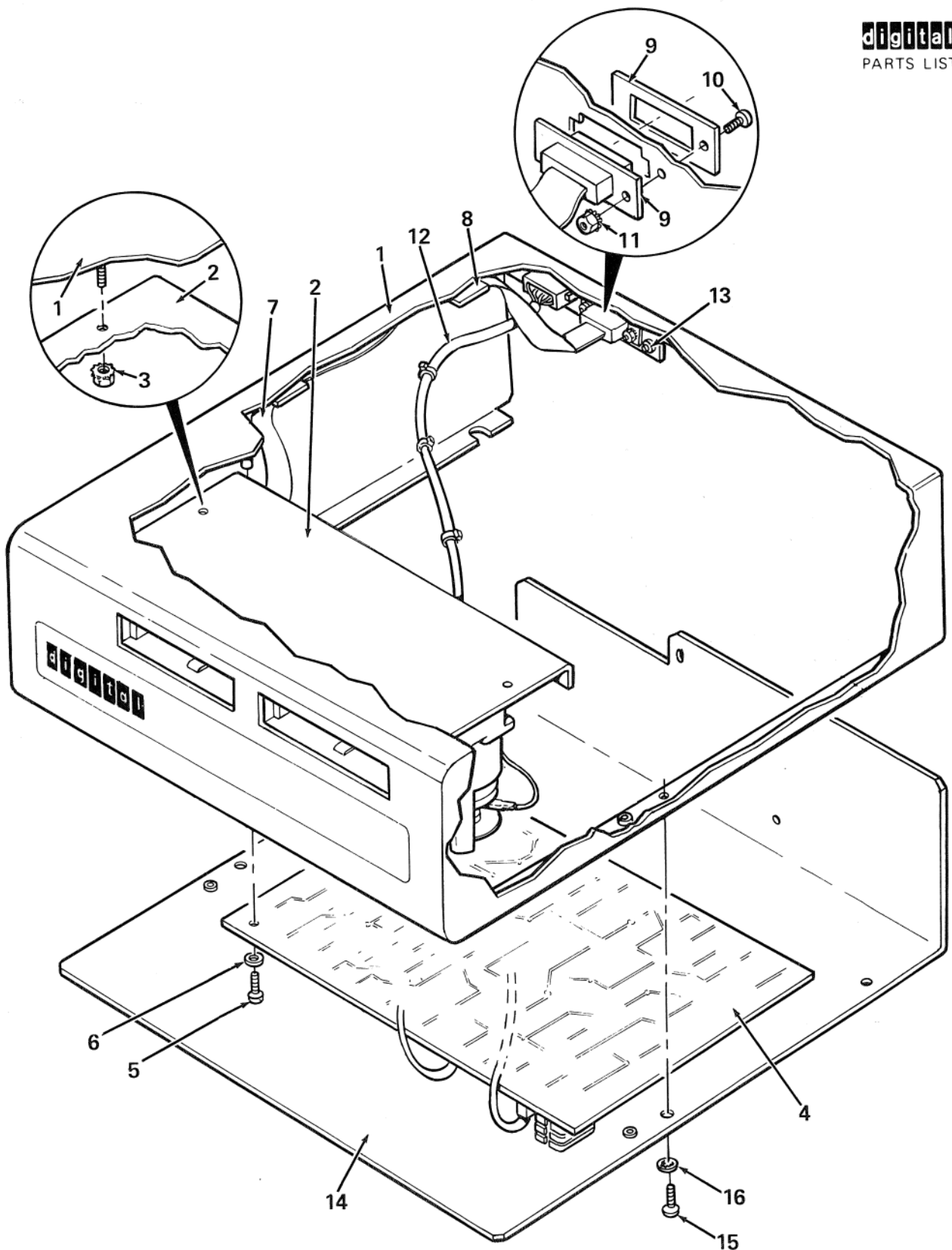
FIG. & ITEM NO.	DESCRIPTION	DEC PART NO.	ECO CUT-IN TU58-E 00002	USED ON CODE	REF FIG NO.
2-	TU58 POWERED DUAL DRIVE ASSEMBLY	TU58-EX			1
1	*Weldment, Enclosure	70-17348-01			
2	*TAPE DRIVE ASSEMBLY	70-17567-00			5
3	*Nut, Kep No. 6-32	90-06560-00			
4	*Serial, TU58	54-13489-00			
5	*Screw, Phl Pan Hd No. 4-40 x .25	90-08301-01			
6	*Washer, Nylon Flat No. 6	90-06707-00			
7	*Cable, I/O	70-16305-IF			
8	*Cable Clamp	90-09636-00			
9	*Bracket, Connector	74-24676-00			
10	*Screw, Phl Pan Hd No. 4-40 x 5/8	90-06014-01			
11	*Nut, Kep No. 4-40	90-06557-00			
12	*POWER SUPPLY ASSEMBLY	70-17372-00			8
13	*Screw, Phl Pan Hd No. 10-32 x .38	90-06071-01			
14	*TU58 SUPPLY OUTPUT CABLE ASSEMBLY	70-15527-01			11
15	*Plate, Bottom	74-23656-00			
16	*Screw, Phl Turss Hd No. 8-32 x .38	90-06037-03			
17	*Washer, Int Tooth Lock No. 8	90-06634-00			
	Decals/Labels (Not Shown)				
	†Decals, GND	36-12680-01			
	†Decal, Indicator Panel Overlay	36-16336-02			
	†Decals, D.C. Power	36-17480-00			
	†Label, CSA	36-13211-00			
	†Label, UL	74-16697-02			
	†Label, Serial No.	36-13210-03			

FIG. & ITEM NO.	DESCRIPTION	DEC PART NO.	ECO CUT-IN TU58-V 00002	USED ON CODE	REF FIG NO.
3-	TU58 STAND ALONE DUAL DRIVE ASSEMBLY	TU58-VA			
1	*TU58 STAND ALONE DUAL DRIVE ASSEMBLY	TU58-VA			
2	*ACCESSORY KIT	TU58-VB			
3	**I/O CABLE ASSEMBLY (Not Shown)	70-17568-1F			14
4	**D.C. CABLE ASSEMBLY (Not Shown)	70-17569-1C			15
5	**Media Cartridge	36-16809-00			
6	**INSTALLATION ASSEMBLY	70-16753-01			
7	***Bracket, Mounting	74-23311-00			
8	***Bumper, Rubber	90-08190-00			
9	***Washer, Int Tooth Lock No. 10	90-06635-00			
10	***Screw, Phl Pan Hd No. 10-32 x .38	90-06071-01			



TU58-03

Figure 3. TU58 Stand Alone Dual Drive Assembly

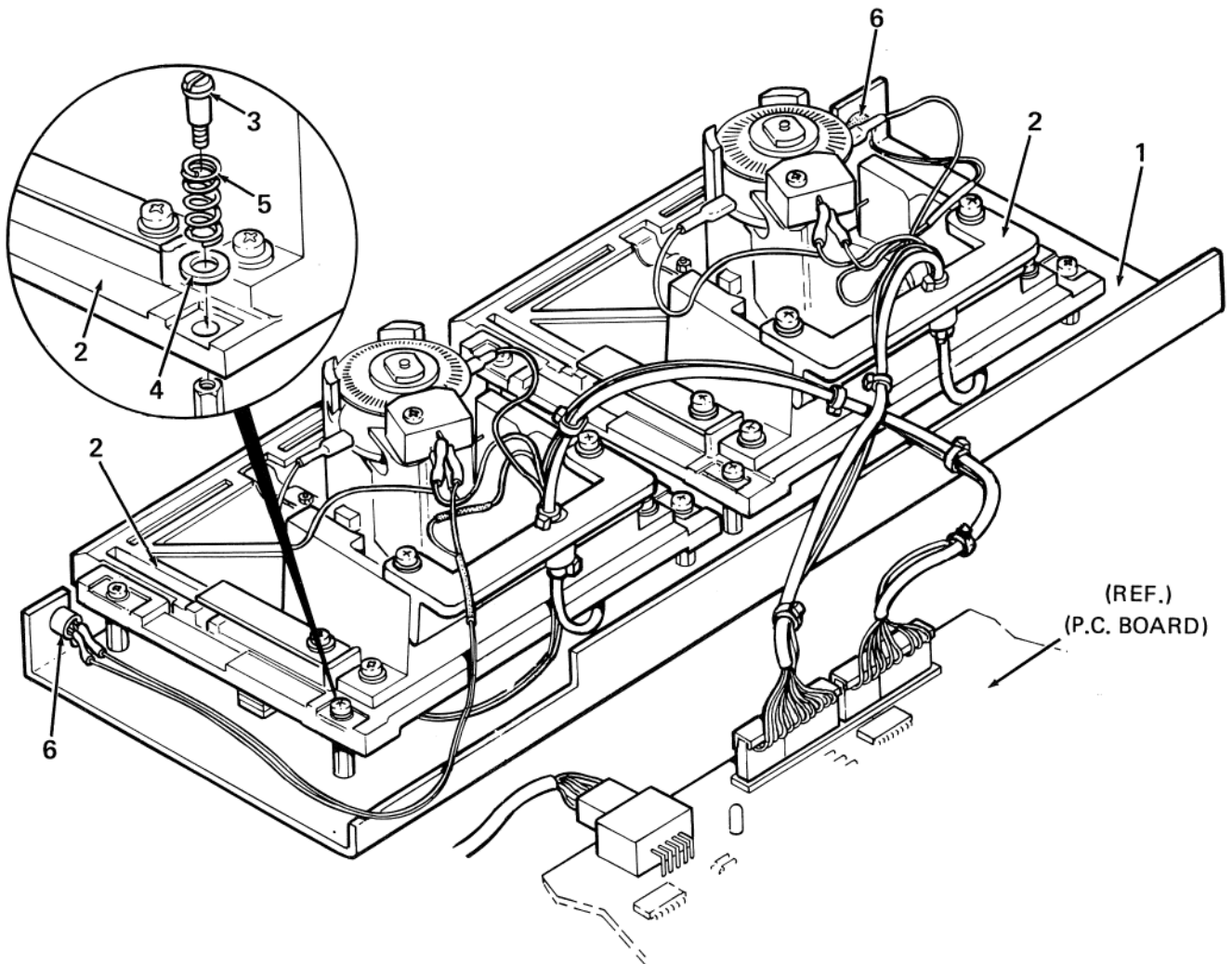


TU58-04

Figure 4. TU58 Stand Alone Dual Drive Assembly

FIG. & ITEM NO.	DESCRIPTION	DEC PART NO.	ECO CUT-IN TU58-V 00002	USED ON CODE	REF FIG NO.
4-	TU58 STAND ALONE DUAL DRIVE ASSEMBLY	TU58-VX			3
1	*Weldment, Enclosure	70-17348-01			
2	*TAPE DRIVE ASSEMBLY	70-17567-00			5
3	*Nut, Kep No. 6-32	90-06560-00			
4	*Serial, TU58	54-13489-00			
5	*Screw, Phi Pan Hd No. 4-40 x .25	90-08301-01			
6	*Washer, Nylon Flat No. 6	90-06707-00			
7	*Cable, I/O	70-16305-1F			
8	*Cable Clamp	90-09636-00			
9	*Bracket, Connector	74-24676-00			
10	*Screw, Phi Pan Hd No. 4-40 x 5/8	90-06014-01			
11	*Nut, Kep No. 4-40	90-06557-00			
12	*D.C. POWER CABLE ASSEMBLY	70-17347-1A			16
13	*Screw, Phi Pan Hd No. 10-32 x .38	90-06071-01			
14	*Plate, Bottom	74-23307-00			
15	*Screw, Phi Truss Hd No. 8-32 x .38	90-06035-03			
16	*Washer, Int Tooth Lock No. 8	90-06634-00			
	Decals/Labels (Not Shown)				
	†Decal, Logo	36-16336-00			
	†Decal, Indicator Panel Overlay	36-17480-00			
	†Decal, GND	36-12680-01			
	†Label, Serial No.	36-13210-03			
	†Label, CSA	36-13211-00			
	†Label, UL	74-16697-02			

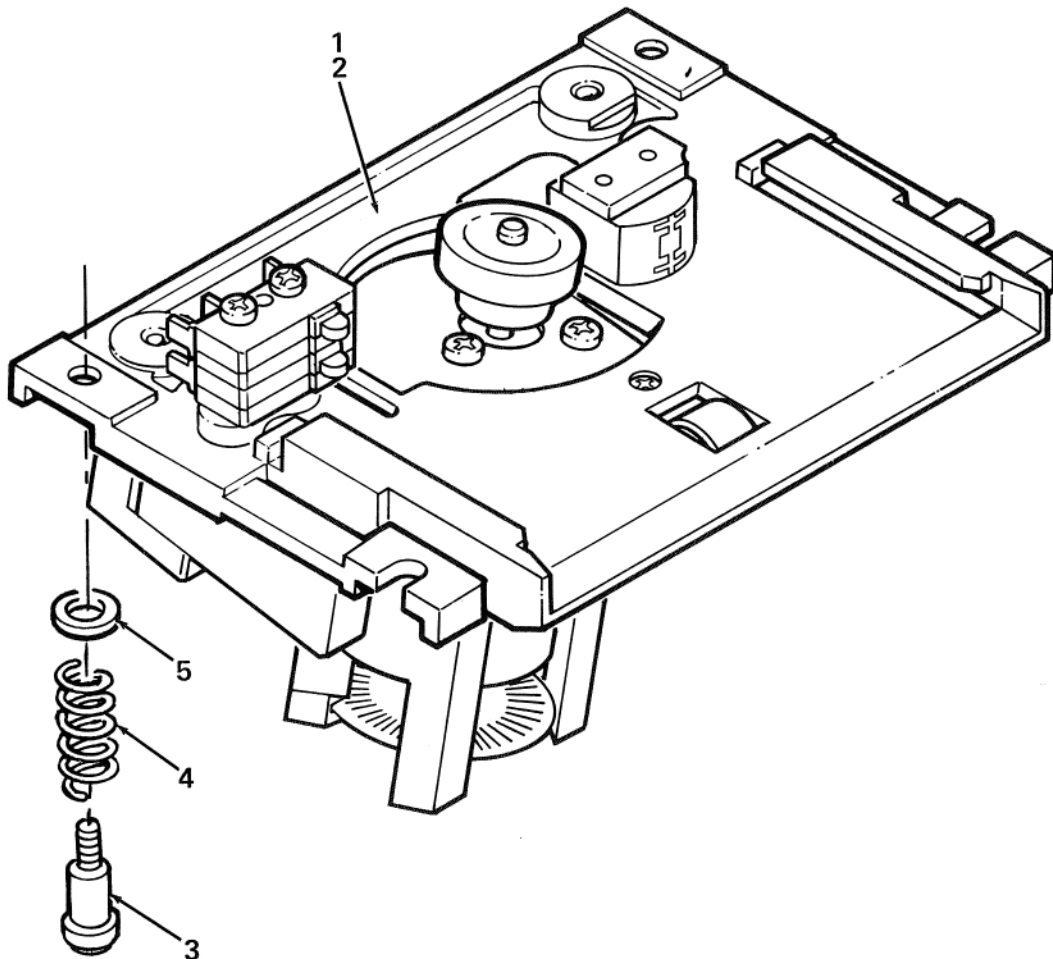
FIG. & ITEM NO.	DESCRIPTION	DEC PART NO.	ECO CUT-IN 70-17567 00000	USED ON CODE	REF FIG NO.
5-	TAPE DRIVE ASSEMBLY	70-17567-00			2,4
1	*Plate, Tape Drive	74-23305-00			
2	*CARTRIDGE DRIVE ASSEMBLY	70-15510-00			7
3	*Screw, Shoulder	74-24084-00			
4	*Washer	74-24101-00			
5	*Spring, Compression	12-17653-00			
6	*L. E. D. Assembly	70-17543-00			



TU58-05

Figure 5. Tape Drive Assembly

FIG. & ITEM NO.	DESCRIPTION	DEC PART NO.	ECO CUT-IN TU58-XA 00004	USED ON CODE	REF FIG NO.
6-	DRIVE MECHANISM ASSEMBLY	TU58-XA			
1	*CARTRIDGE DRIVE ASSEMBLY	70-15510-00			7
2	*Packaging Instruction	37-00385-00			
3	@Screw, Shoulder (See Note)	74-24084-00			
4	@Spring, Compression	12-17653-00			
5	@Washer	74-24101-00			
	Label, (Not Shown)				
	†Label, Head Cleaning Advice	36-17416-00			
	Note: Items 3, 4, 5 are used to attach Item 1 to unit. For Installation procedure see document EK-0TU58-WS.				



TU58-06

Figure 6. Drive Mechanism Assembly

FIG. & ITEM NO.	DESCRIPTION	DEC PART NO.	ECO CUT-IN TU58-XA 00004	USED ON CODE	REF FIG NO.
7-	CARTRIDGE DRIVE ASSEMBLY	70-15510-00			6,5,10
1	* Mounting Head Assembly	70-16558-00			
2	* Lock Roller	74-20645-01			
3	* Spring, Bevel	74-23353-00			
4	* Screw, Phl Pan Hd No. 6-32 x 5/16	90-06021-01			
5	* Washer, Split Lock No. 6	90-07801-00			
6	* Motor, 12 Vdc Servo	12-15602-00			
7	* Screw, Phl Pan Hd No. 4-40 x .25	90-08301-01			
8	* Drive Roller Assembly	12-16231-00			
9	* Screw, Set No. 4-40 x .125	90-06278-10			
10	* Switch, SPDT	12-09782-00			
11	* Screw, Phl Pan Hd No. 2-56 x .62	90-08025-01			
12	* TAPE DRIVE CABLE ASSEMBLY	70-16017-00			13
13	* Cable Clamp	74-21491-00			
14	* Screw, Phl Pan Hd No. 4-40 x .31	90-06010-01			
15	* Washer, Flat No. 4	90-06655-00			
16	* Washer, Lock No. 4	90-06688-00			
17	* Cable Tie	90-07031-00			
18	* Cover, Connector	12-16144-00			
19	* Hub, Encoder	74-20651-00			
20	* Clamp	74-20652-00			
21	* Wheel, Code	74-20649-00			
22	* Optical Sensor	19-15721-00			
23	* Screw, Phl Pan Hd No. 4-40 x .50	90-06013-01			
24	* Spring, Straight Support	74-23355-00			
25	* Screw, Phl Flat Hd No. 2-56 x .25	90-06001-02			
26	* Washer, Int Tooth Lock	90-06631-00			
27	* Nut, Hex Hd No. 2-56	90-06555-00			
28	* Washer, Leaf Spring	74-23354-00			
29	* Button, Support	74-23356-00			
	Labels (Not Shown)				
	†Label, Serial No. (added)	36-16582-00			

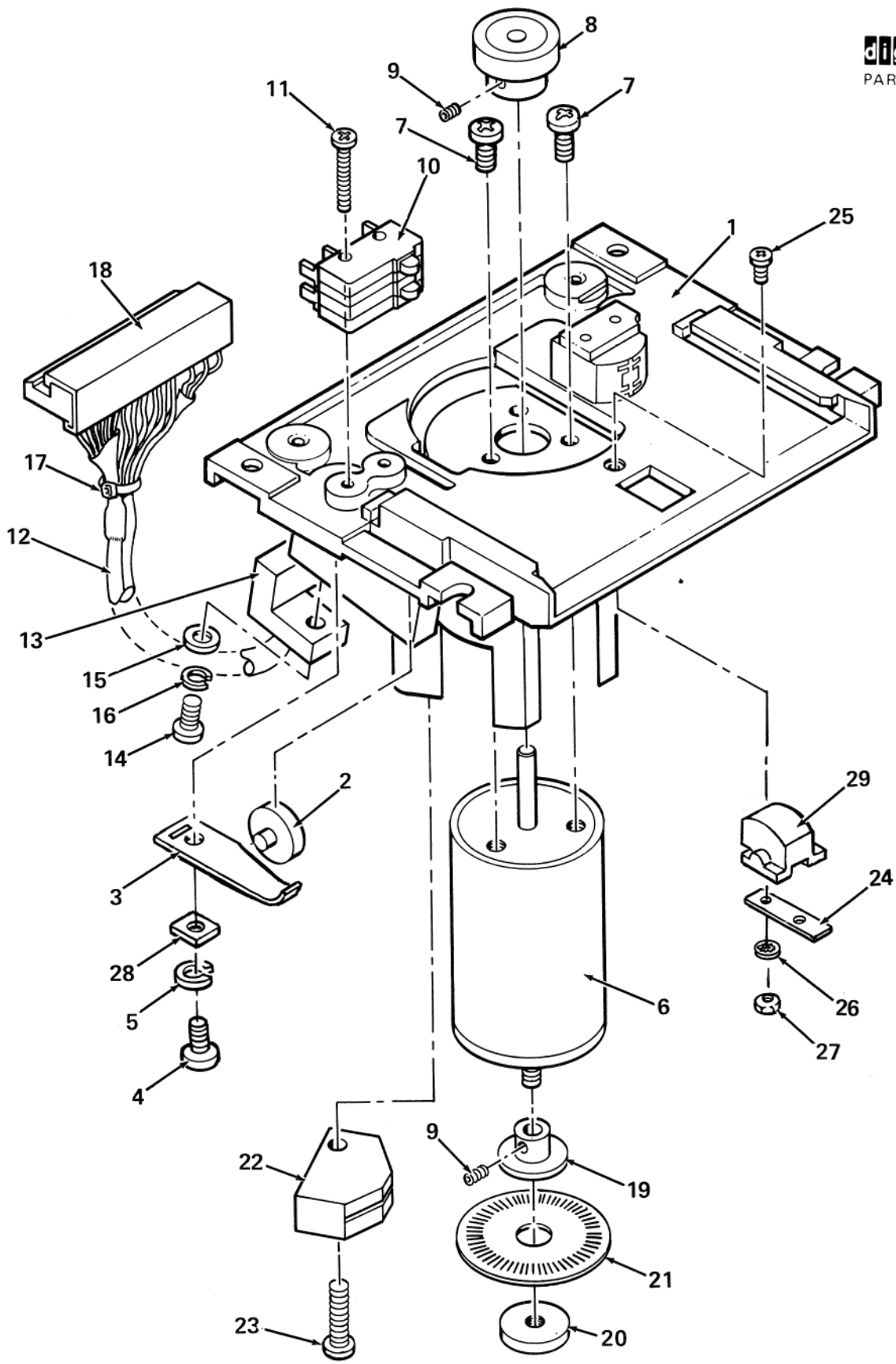


Figure 7. Cartridge Drive Assembly

TU58-07

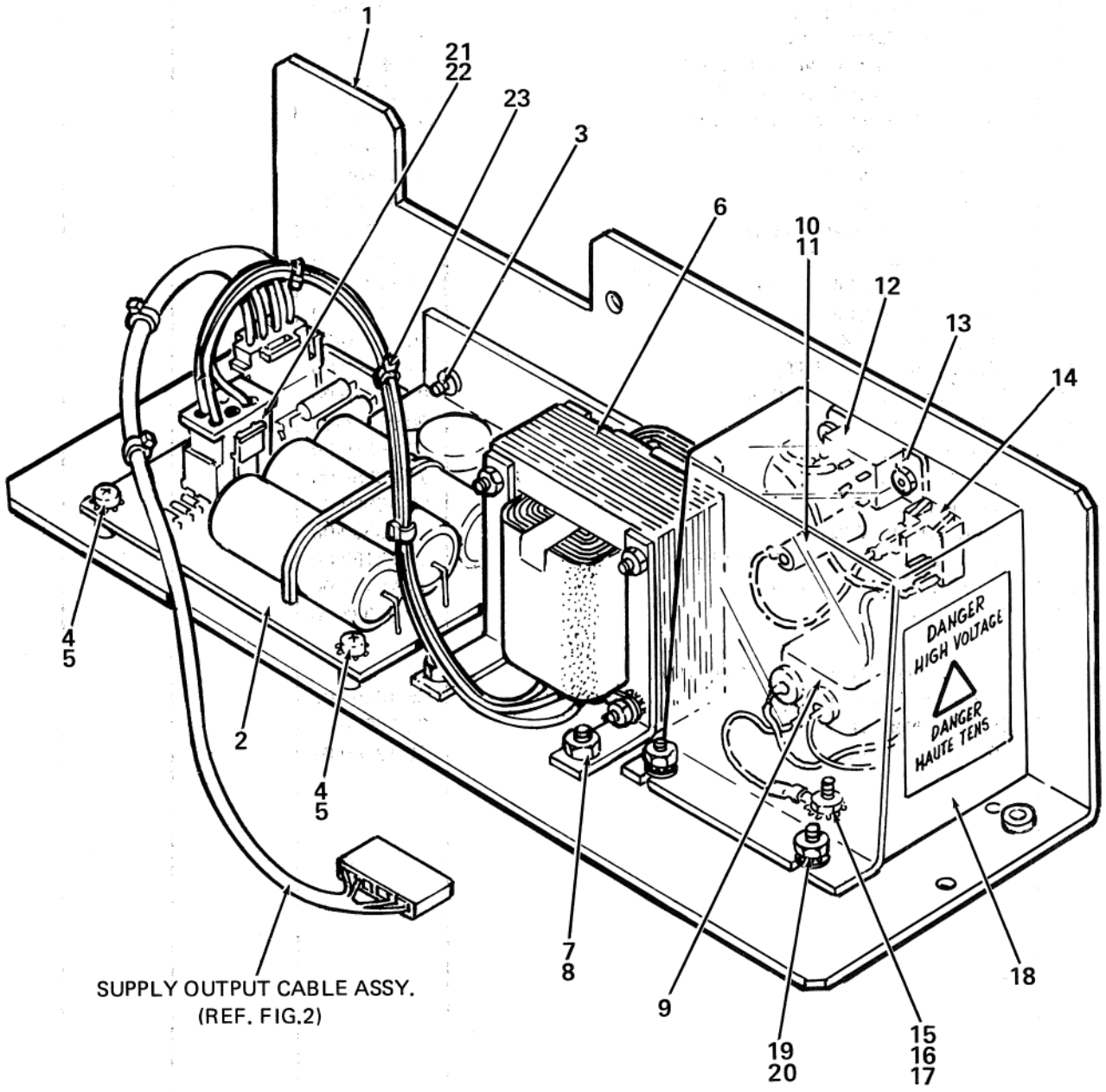
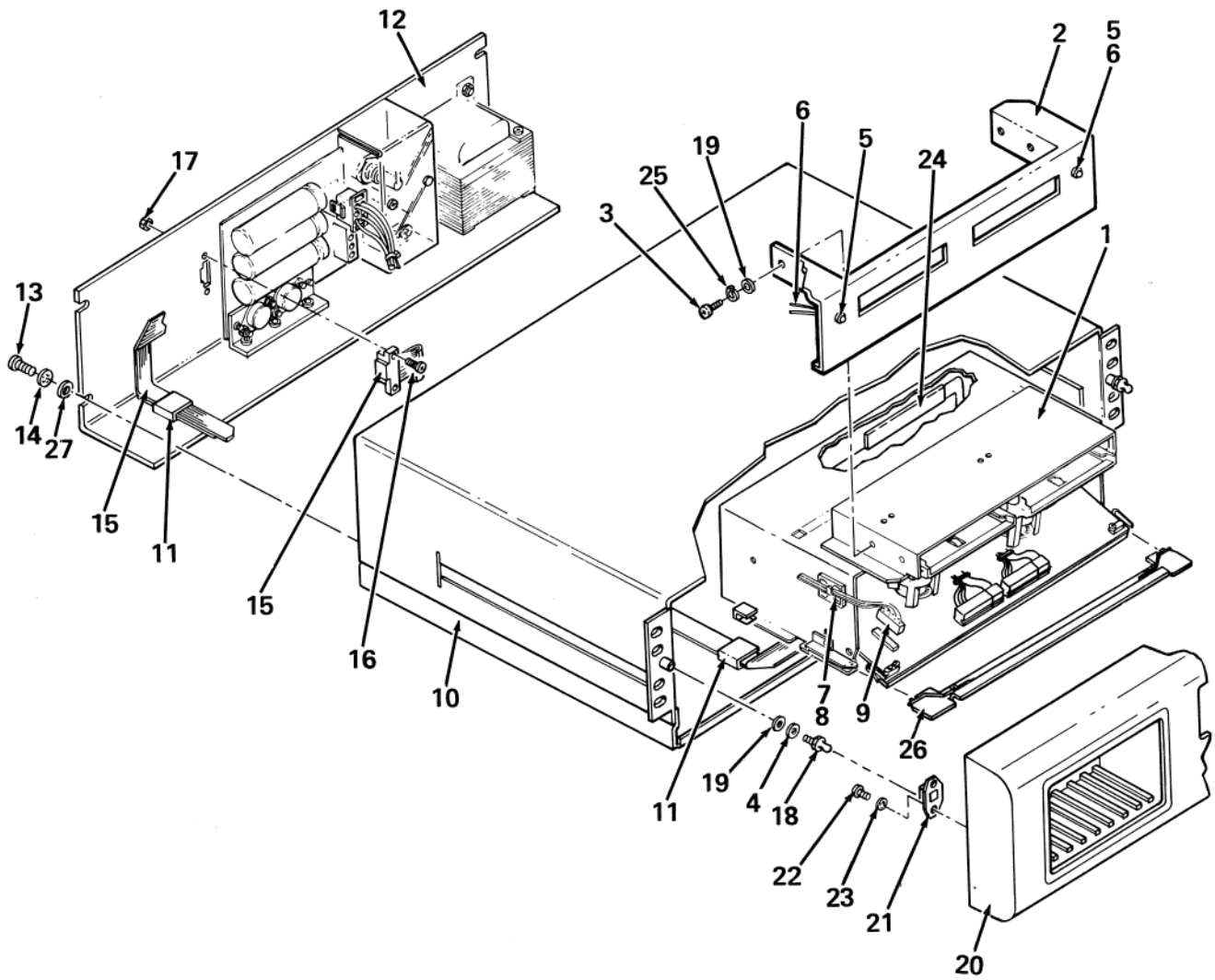


Figure 8. Power Supply Assembly

TU58-08

FIG. & ITEM NO.	DESCRIPTION	DEC PART NO.	ECO CUT-IN 70-17372 00000	USED ON CODE	REF FIG NO.
8-	POWER SUPPLY ASSEMBLY	70-17372-00			2
1	*Bracket, Power Supply	74-23654-00			
2	*TU58 Regulator Board	54-13609-00			
3	*Screw, Phi Flat Hd No. 6-32 x 3/8	90-06022-02			
4	*Washer, Ext Tooth Lock No. 6	90-07649-00			
5	*Screw, Phi Pan Hd No. 6-32 x 3/8	90-06022-01			
6	*Transformer, Power	16-16062-00			
7	*Washer, Flat No. 8	90-06666-00			
8	*Nut, Kep No. 8-32	90-06563-00			
9	*Power Receptacle/Line Filter	12-15905-00			
10	*Fuse Holder	12-16391-00			
11	*Fuse, .750A, 250V, Slo-Blo	12-11237-00			
12	*Switch, Slide (D.P.D.T)	12-16901-00			
13	*Nut, Hex No. 4-40	90-09280-00			
14	*Switch, Rocker (D.PST)	12-16552-00			
15	*Terminal, Ring No. 10 (Red)	90-07930-00			
16	*Washer, Flat No. 10	90-06664-00			
17	*Nut, Kep No. 10-32	90-06565-00			
18	*Shield, Protective	74-23655-00			
19	*Washer, Flat No. 6	90-06659-00			
20	*Nut, Kep No. 6-32	90-06560-00			
21	*Connector, Plug 6 Pin Mate-N-Lok	12-12167-06			
22	*Terminal, Female Contact	12-12170-00			
23	*Cable Tie	90-07031-00			
	Decals/Stickers (Not Shown)				
	†Decal, High Voltage	36-16053-00			
	†Sticker, Neutral	36-15998-00			
	†Sticker, Ground	36-12680-01			



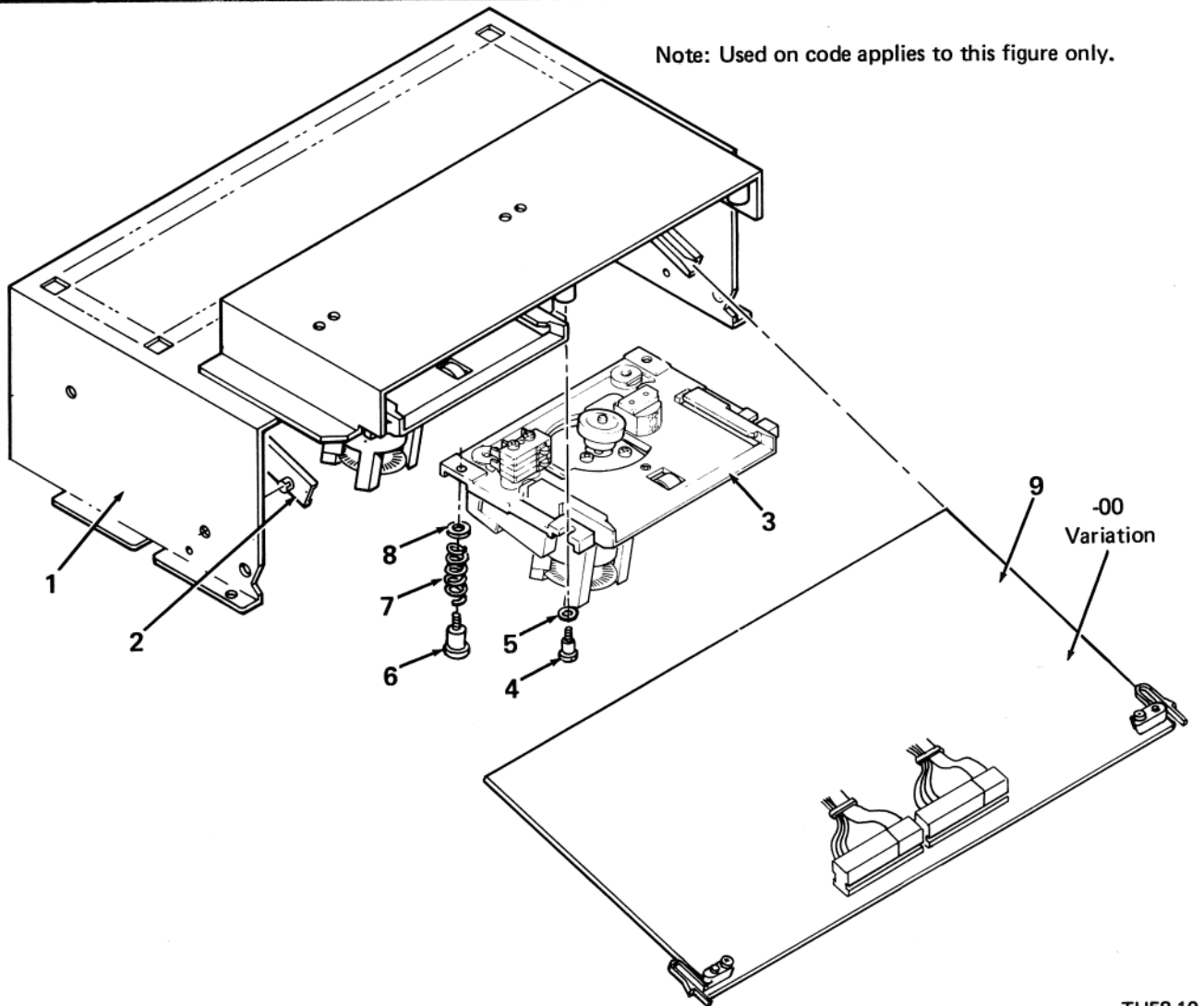
TU58-09

Figure 9. Rack Mount Dual Drive Assembly

FIG. & ITEM NO.	DESCRIPTION	DEC PART NO.	ECO CUT-IN TU58-C 00002	USED ON CODE	REF FIG NO.
9-	RACK MOUNT DUAL DRIVE ASSEMBLY				
	Code A – Used on Model TU58-CA (With Data Cables)	TU58-CA		A	
	Code B – Used on Model TU58-CX (Without Data Cables)	TU58-CX		B	
1	*TAPE DRIVE HOUSING/MODULE ASSEMBLY	70-15854-01			10
2	*Bracket, LED Mounting	74-21487-00			
3	*Screw, Phi Pan Hd No. 6-32 x .25	90-06020-01			
4	*Washer, Int Tooth Lock No. 4	90-06633-00			
5	*LED	11-10324-00			
6	*Jumper, LED	70-16525-00			
7	*Mount, Cable Tie	90-08264-00			
8	*Cable Tie	90-07031-00			
9	*TU58 SUPPLY OUTPUT CABLE ASSEMBLY	70-16527-02			11
10	*Enclosure Assembly	70-16079-00			
11	*Cable Clamp	90-09636-00			
12	*POWER SUPPLY ASSEMBLY	70-16078-00			12
13	*Screw, Phi Truss Hd No. 8-32 x .50	90-06039-03			
14	*Washer, Int Tooth Lock No. 8	90-06634-00			
15	*Cable, Serial TU58	70-16305-00			
16	*Screw, Phi Pan Hd No. 4-40 - .56	90-08033-01			
17	*Nut, Kep No. 4-40	90-06557-00			
18	*Ball Stud	90-08149-00			
19	*Washer, Flat	90-06655-00			
20	*Bezel, Foam (Rework)	74-22486-00			
21	*Retainer	90-08487-00			
22	*Screw, Forming Type B, Thread	90-10036-00			
23	*Washer, Int Tooth Lock No. 4	90-06632-00			
24	*Grommet, Caterpillar	90-07035-00			
25	*Washer, Lock No. 6	90-07801-00			
26	*Retaining Bar Assembly	70-17724-00			
27	*Washer, Flat No. 8	90-06660-00			
	Decals/Stickers (Not Shown)				
	†Decal	36-13209-00			
	†Decal, U/L Listed EDP	74-16197-01			
	†Sticker CSA	36-13211-00			
	Shipping List (B-PL - TU58-C)				
	†Line Cord (115V)	17-00083-02			
	†Line Cord (230V)	17-00090-00			
	†Boot Strap Chip	23-765A9-00			
	†Data Cable, 40 pin to 10 pin	BC204-25		A	
	†Data Cable, 10 pin to 10 pin	BC202-25		A	
	†Fuse, .38A, 250V Slow Blow	90-07207-00			
	†Screw, Phi Trus Hd No. 10-32 x .50	90-06073-03			
	†Washer, Int Tooth No. 10	90-06636-00			
	†Washer, Flat No. 10	90-06664-00			
	†Nut, Self Retaining No. 10-32	90-07786-00			
	†Bracket, Support	74-23818-00			
	†Bracket, Support	74-23818-01			
	†TU58 Media (Tape Cartridge)	TU58-K			

FIG. & ITEM NO.	DESCRIPTION	DEC PART NO.	ECO CUT-IN 70-15923 00002	USED ON CODE	REF FIG NO.
10-	TAPE DRIVE HOUSING/MODULE ASSEMBLY (See Note)	70-15854-00		A	9
	TAPE DRIVE HOUSING/MODULE ASSEMBLY (See Note)	70-15854-01		B	9
1	*Housing, Tape Drive	70-15820-00			
2	*Card Guide, Single (Rework)	74-22229-00		A	
	*Card Guide, Single (Rework)	74-22229-01		B	
3	*CARTRIDGE DRIVE ASSEMBLY	70-15510-00			7
4	*Screw, Shoulder	12-17421-00		A	
5	*Washer, Curved Spring	90-10220-00		A	
6	*Screw, Shoulder	74-24084-00		B	
7	*Spring, Compression	12-17653-00		B	
8	*Washer	74-24101-00		B	
9	*Module, Parallel TU58 (Shown)	54-13491-00		A	
	*Module, Serial TU58 (Not Shown)	54-13491-01		B	

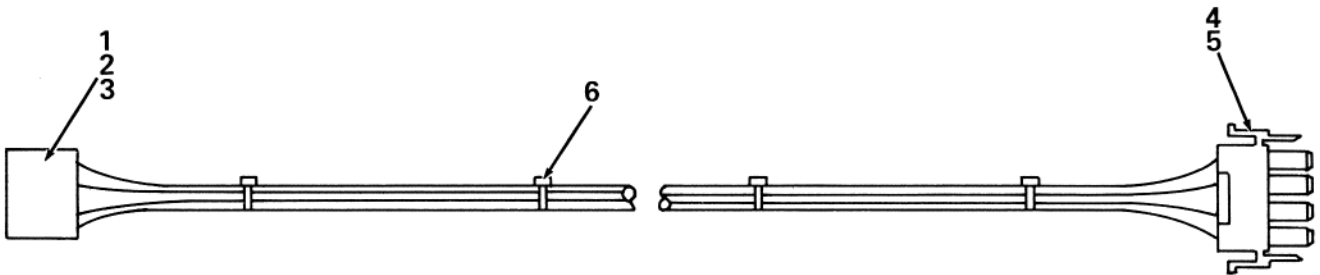
Note: Used on code applies to this figure only.



TU58-10

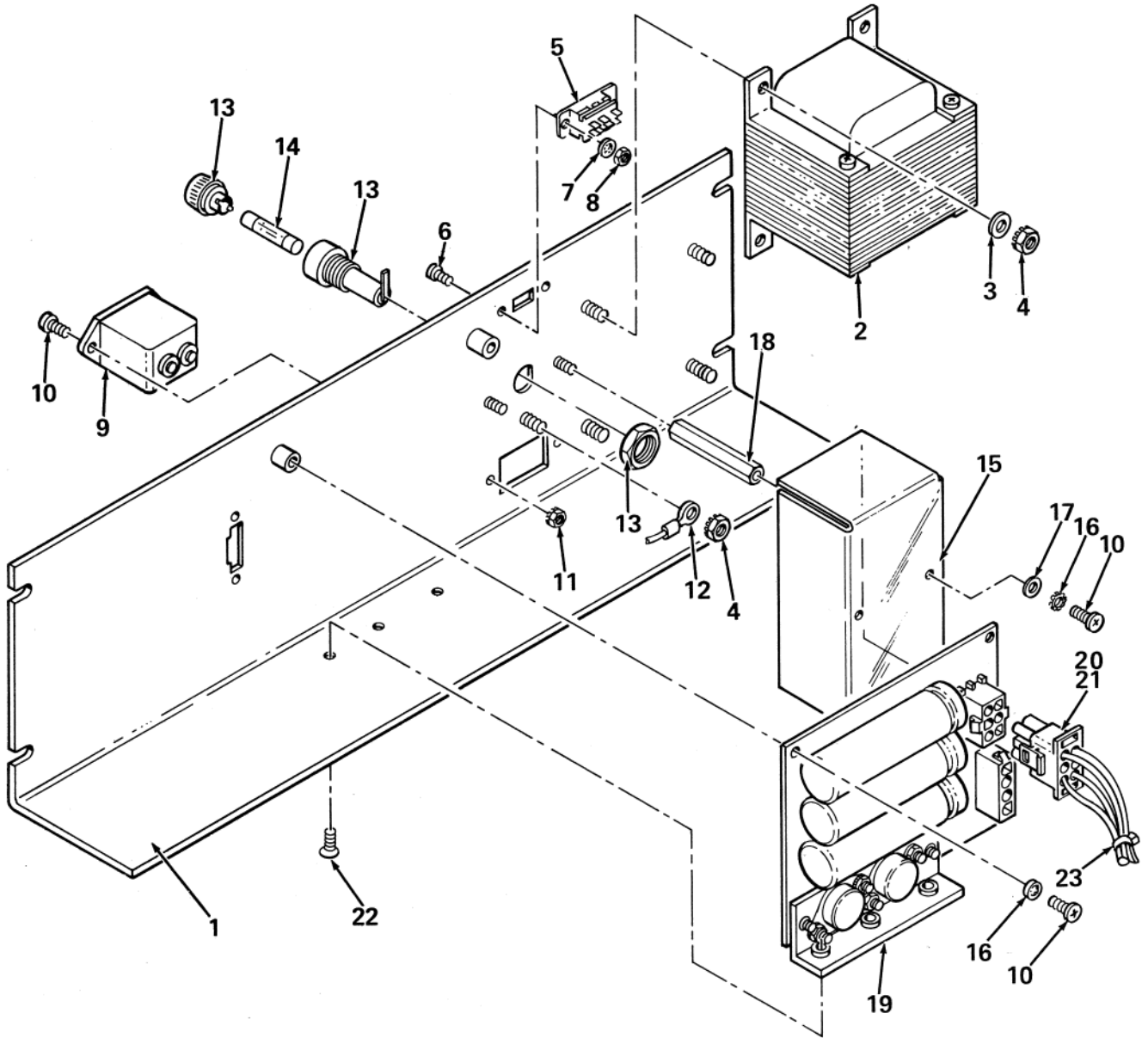
Figure 10. Tape Drive Housing/Module Assembly

FIG. & ITEM NO.	DESCRIPTION	DEC PART NO.	ECO CUT-IN 70-16527 00001	USED ON CODE	REF FIG NO.
11-	TU58 SUPPLY OUTPUT CABLE ASSEMBLY (1 ft) TU58 SUPPLY OUTPUT CABLE ASSEMBLY (2 ft)	70-16527-01 70-16527-02			2 9
1	*Connector, (P1) Pin Housing 6 Pin Mate-N-Lok	12-12202-09			
2	*Keying Plug, (P1) Connector	12-16113-00			
3	*Terminal, (P1) Female Contact	12-12203-00			
4	*Connector, (P2) Pin Housing 4 Pin Mate-N-Lok	12-12167-01			
5	*Terminal, (P2) Female Contact	12-12170-00			
6	*Cable Tie	90-07031-00			
	*Wire, No. 18 AWG				



TU58-11

Figure 11. TU58 Supply Output Cable Assembly

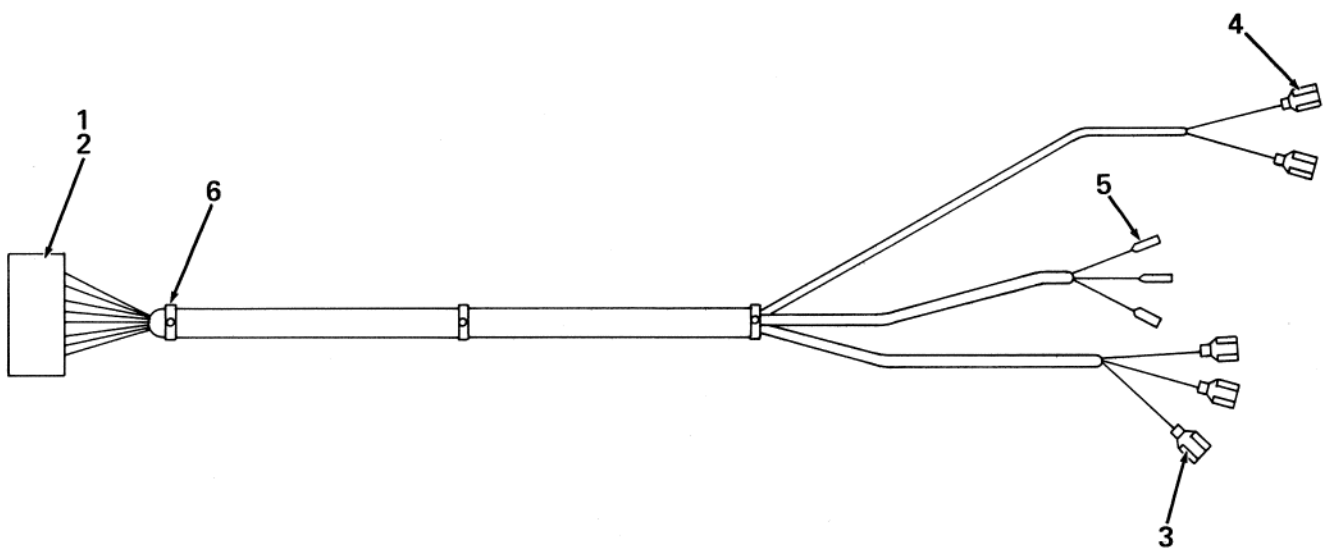


TU58-12

Figure 12. Power Supply Assembly

FIG. & ITEM NO.	DESCRIPTION	DEC PART NO.	ECO CUT-IN 70-16078 00000	USED ON CODE	REF FIG NO.
12-	POWER SUPPLY ASSEMBLY	70-16078-00			9
1	*Cover, Power Supply Mounting	74-21484-00			
2	*Transformer, Power	16-16062-00			
3	*Washer, Flat No. 8	90-06661-00			
4	*Nut, Kep 8-32	90-06563-00			
5	*Switch, DPDT (115 V - 230 V)	12-15340-01			
6	*Screw, Phl Pan Hd No. 4-40 x 5/16	90-06010-01			
7	*Washer, Lock Int Tooth No. 4	90-06632-00			
8	*Nut, Hex No. 4-40	90-09280-00			
9	*Power Receptacle and Line Filter	12-15905-00			
10	*Screw, Phl Pan Hd No. 6-32 x 3/8	90-06022-01			
11	*Nut, Kep No. 6-32	90-06560-00			
12	*Terminal, Ring No. 10	90-07930-00			
13	*Fuse, Holder	12-12893-00			
14	*Fuse, .750 A 250 V Slow Blow	12-11237-00			
15	*Cover, Safety	74-22054-00			
16	*Washer, Lock Ext Tooth No. 6	90-07649-00			
17	*Washer, Flat No. 6	90-06659-00			
18	*Spacer, Hex No. 6-32	90-07604-00			
19	*Regulator Board Assembly	54-13609-00			
20	*Connector, (J1) Plug 6 Pin Mate-N-Lok	12-12167-06			
21	*Terminal, (J1) Female Contact	12-12170-00			
22	*Screw, Phl Flat Hd No. 6-32 x 3/8	90-06022-01			
23	*Cable Tie	90-07031-00			
	*Wire, No. 18 AWG				
	Decals (Not Shown)				
	†Decal, High Voltage	36-16053-00			
	†Decal, Neutral	36-15998-00			
	†Decal, Ground	36-12680-00			

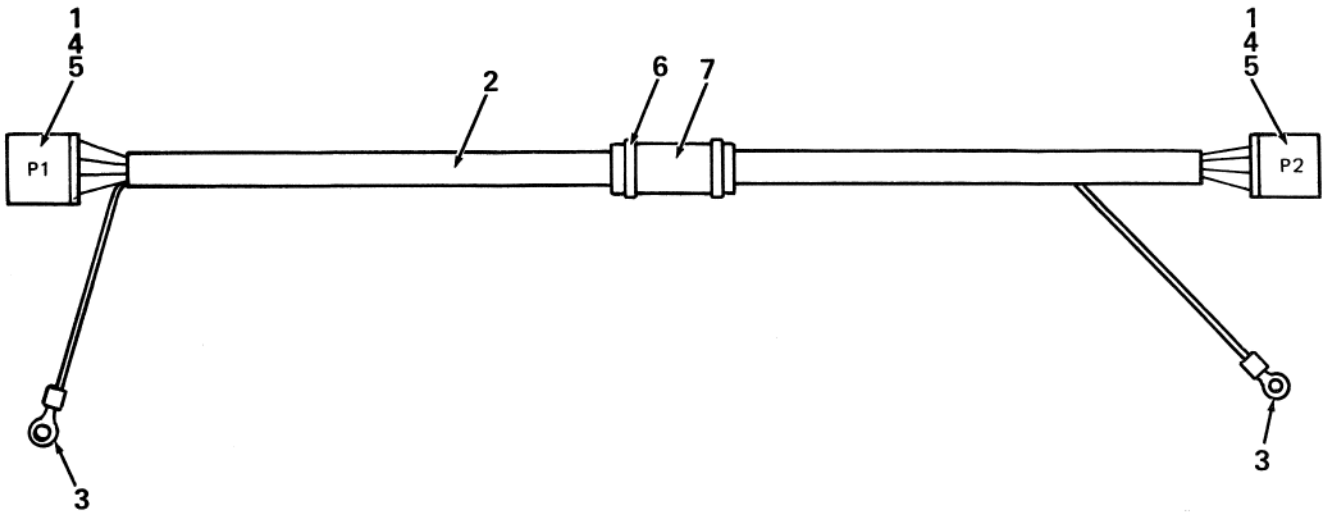
FIG. & ITEM NO.	DESCRIPTION	DEC PART NO.	ECO CUT-IN 70-16017 00001	USED ON CODE	REF FIG NO.
13-	TAPE DRIVE CABLE ASSEMBLY	70-16017-00			7
1	*Connector, (PD) Housing 9 Position	12-16705-00			
2	*Keying Plug, (PD) Connector	12-15987-00			
3	*Terminal, Quick Connect	90-09106-02			
4	*Terminal, Quick Connect	90-09106-06			
5	*Socket, Crimp	90-07655-01			
6	*Cable Tie	90-07031-00			
	*Wire, No. 24 AWG				



TU58-13

Figure 13. Tape Drive Cable Assembly

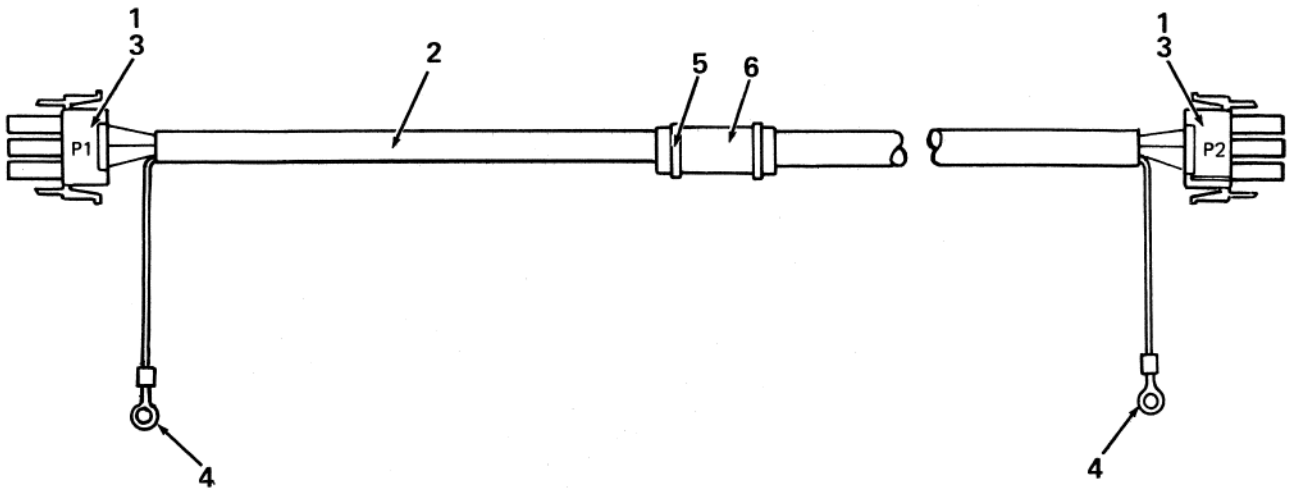
FIG. & ITEM NO.	DESCRIPTION	DEC PART NO.	ECO CUT-IN 70-17568 00001	USED ON CODE	REF FIG NO.
14-	I/O CABLE ASSEMBLY	70-17568-1F			3
1	*Connector, 10 Pin Housing	12-14268-02			
2	*Cable, 4 Conductor	17-00155-01			
3	*Terminal, Lug	12-14628-00			
4	*Keyplug, Locking Clip	12-15418-00			
5	*Contact, Crimp	12-14267-00			
6	*Cable Tie	90-07031-00			
7	*Label, Cable I.D.	90-09532-00			



TU58-14

Figure 14. I/O Cable Assembly

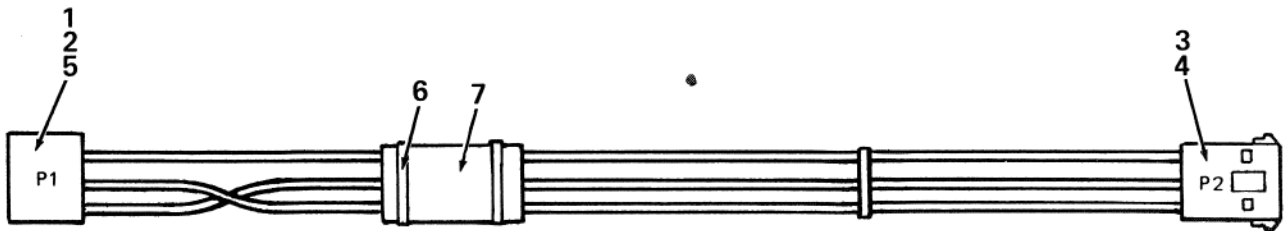
FIG. & ITEM NO.	DESCRIPTION	DEC PART NO.	ECO CUT-IN 70-17569 00000	USED ON CODE	REF FIG NO.
15-	D.C. CABLE ASSEMBLY	70-17569-1C			3
1	*Connector (P1,P2) Universal Housing 3 Pin Mate-N-Lok	12-12167-00			
2	*Cable, 4 Conductor	17-00189-00			
3	*Terminal, Pin (P1,P2) Mate-N-Lok	12-12169-00			
4	*Terminal, Ring	90-07930-00			
5	*Cable Tie	90-07031-00			
6	*Label, Cable I.D.	90-09582-00			



TU58-15

Figure 15. D.C. Cable Assembly

FIG. & ITEM NO.	DESCRIPTION	DEC PART NO.	ECO CUT-IN 70-17347 00000	USED ON CODE	REF FIG NO.
16-	D.C. POWER CABLE ASSEMBLY	70-17347-1A			4
1	*Connector, (P1) 6 Pin Housing	12-12202-09			
2	*Terminal, Socket (Crimp Type)	12-12203-00			
3	*Connector, (P2) Universal Housing 3 pin Mate-N-Lok	12-12168-00			
4	*Terminal, Socket	12-12170-00			
5	*Connector, Keying Plug	12-16113-00			
6	*Cable Tie	90-07031-00			
7	*Label, Cable I.D.	90-09532-00			
					DEC



TU58-16

Figure 16. D.C. Power Cable Assembly