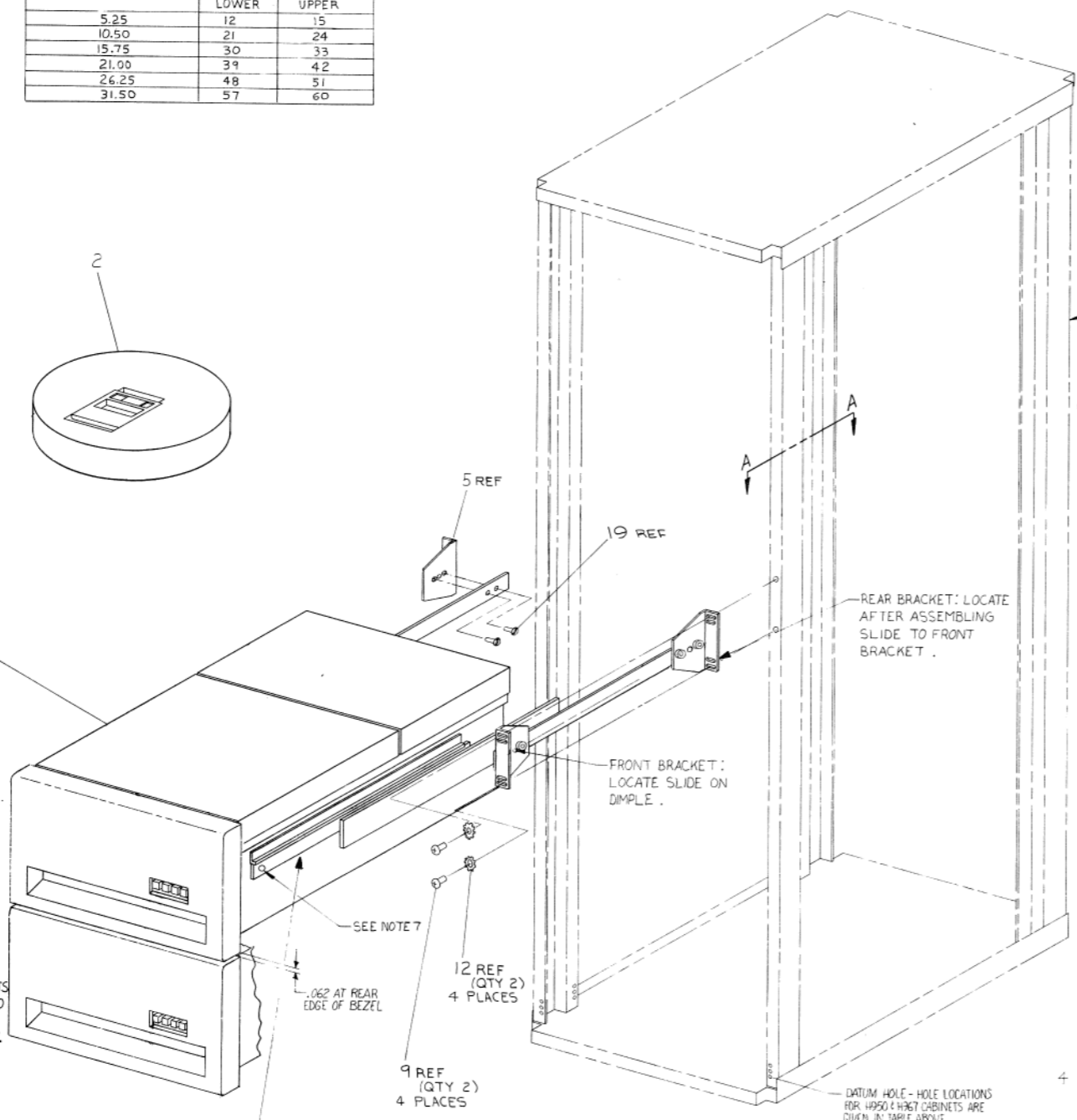
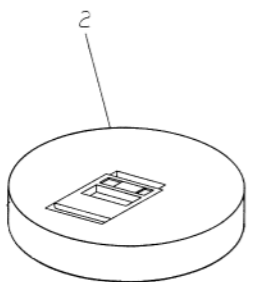


8 7 6 5 4 3 2 1

J
H
F
E
D
C
B
A

HOLE LOCATIONS FOR MOUNTING IN H950 AND H967 CABINETS

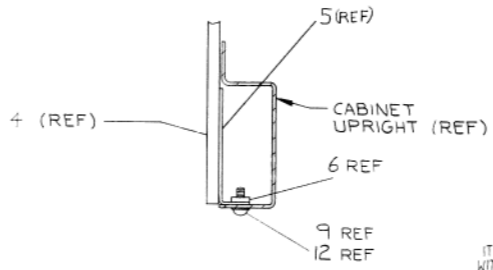
AVAILABLE SPACE BENEATH RLØ1	MOUNTING HOLES (FROM DATUM HOLE)	
	LOWER	UPPER
5.25	12	15
10.50	21	24
15.75	30	33
21.00	39	42
26.25	48	51
31.50	57	60



WHEN TWO RLØ1'S ARE MOUNTED IN A CABINET THE POSITION OF THE SLIDE BRACKETS MUST BE ADJUSTED SO THAT THE BEZELS ARE PARALLEL AND ALIGNED VERTICALLY.

SEE DETAIL "F" (SHEET 4)

RLØ1-AK (SHOWN IN AN H950 CAB)



7. CONT.
D. SECURE DRIVE TO SLIDES USING SCREWS SUPPLIED. (SEE DETAIL "F", SHEET 4)
E. TO REMOVE DRIVE, EXTEND SLIDES FULLY, REMOVE SCREWS, RELEASE LATCHES AND LIFT OFF.
8. FOR LAST DRIVE IN A SYSTEM I/O CABLE PLUGS INTO EITHER SOCKET. TERMINATOR (SUPPLIED WITH CONTROLLER) PLUGS INTO THE OTHER.
NOTES CONT. ON SHT 2

- NOTES:
- MACHINES ARE SHIPPED CONFIGURED FOR 110 V. AND NOMINAL VOLTAGE RANGE. FOR 220 V OPERATION REMOVE TWO SCREWS FROM "VOLTAGE SELECTOR" COVER, WITHDRAW THE COVER, AND RE-INSERT TURNED UPSIDE DOWN. AFTER INSERTION, 220 MUST BE SHOWING THRU THE SMALL WINDOW. REPLACE THE TWO SCREWS, CUT OFF 110V PLUG ON THE POWER CORD, REPLACE BY 220 V PLUG (ITEM 20). FOR COLOR CODE SEE DETAIL "G", SHEET 4.
 - "LOW LINE" AND "NOMINAL LINE" ARE DEFINED ON COVER OF "VOLTAGE RANGE SELECTOR" FOR LOW LINE VOLTAGE OPERATION. REMOVE TWO SCREWS FROM "VOLTAGE RANGE SELECTOR" COVER, WITHDRAW THE COVER AND RE-INSERT IT TURNED UPSIDE DOWN. AFTER INSERTION, "LOW" MUST BE SHOWING THRU THE SMALL WINDOW. REPLACE THE TWO SCREWS.
 - WHEN AN RLØ1-AK IS ORDERED IN CONJUNCTION WITH H9500, H9501, H9502, H9503, H9600, H9601, H9602, H9603 INTERLOCK KIT(S) (REF 21) OR CABLE RESTRAINT SYSTEM(S) (REF 22) MUST BE ORDERED AND INSTALLED.
 - WHEN AN RLØ1-AK IS ORDERED IN CONJUNCTION WITH A H9503/H9603 THE TRIM PIECES (H9514-B) MUST BE ORDERED.
 - WHEN AN RLØ1-AK IS ORDERED IN CONJUNCTION WITH A H9501/H9601 TRIM PIECES (H9514-A) MUST BE ORDERED.
 - TO ATTACH SHIPPING BRACKET (ITEM 7) REMOVE TWO SCREWS AND TWO LOCKWASHERS FROM ONE SIDE OF THE POWER PANEL ON THE REAR OF DISK DRIVE (ITEM 1). POSITION A SHIPPING BRACKET TO DETERMINE LOCATION OF "U" NUT (ITEM 13) AND ATTACH BRACKET USING ORIGINAL SCREWS AND LOCKWASHERS AND ITEMS 12 AND 9 (AS SHOWN IN DETAIL "D") BRACKET MAY BE ATTACHED TO EITHER SIDE OF UNIT.
 - TO MOUNT RLØ1 IN CABINET:
 - MOUNT BRACKETS AND SLIDES TO UPRIGHTS.
 - EXTEND SLIDES AS FAR AS POSSIBLE BY RELEASING CATCHES. (SEE DETAIL "F" SHT 4)
 - PLACE DRIVE ON SLIDES AND PUSH BACK UNTIL ENDS OF RAILS FIT UNDER TABS ON SLIDES AND LATCHES ENGAGE.

REF	DESCRIPTION	QTY	ITEM NO.
REF	CABLE RESTRAINT SYSTEM, RLØ1	1	22
REF	INTERLOCK KIT(S)	1	21
REF	PLUG 220V POWER	1	20
REF	SCREW SLATED WDR NO 8-32 X .50	4	19
REF	TIE, CABLE	1	18
REF	WASHER FLAT #10	2	17
REF	WASHER FLAT #6	2	16
REF	CLAMP CABLE .75 NOM	2	15
REF	CLAMP CABLE .375 NOM	2	14
REF	NUT, U SHAPED RETAINING 10-32	2	13
REF	WASHER LOCK EXT. TOOTH #10	2	12
REF	WASHER LOCK EXT. TOOTH #6	2	11
REF	SCREW PHL PAN HD #6-32 X .31	2	10
REF	SCREW PHL PAN HD #10-32 X .50	2	9
REF	BRACKET CABLE SUPPORT	1	8
REF	BRACKET SHIPPING RLØ1	1	7
REF	BAR NUT	1	6
REF	BRACKET CHASSIS SLIDE	2	5
REF	CHASSIS/SLIDE	2	4
REF	I/O CABLE ASSY (10 FEET)	1	3
I	RLØ1 DATA CARTRIDGE	1	2
I	DISK DRIVE AND MTL WARDWARE	1	1

UNLESS OTHERWISE SPECIFIED DIMENSIONS ARE IN INCHES

CLASS OF ACCURACY	ANGLES	CLASS OF ACCURACY	ANGLES
1	15	1	15
2	10	2	10
3	5	3	5
4	3	4	3
5	2	5	2
6	1	6	1
7	0.5	7	0.5
8	0.25	8	0.25
9	0.125	9	0.125
10	0.0625	10	0.0625
11	0.03125	11	0.03125
12	0.015625	12	0.015625
13	0.0078125	13	0.0078125
14	0.00390625	14	0.00390625
15	0.001953125	15	0.001953125
16	0.0009765625	16	0.0009765625
17	0.00048828125	17	0.00048828125
18	0.000244140625	18	0.000244140625
19	0.0001220703125	19	0.0001220703125
20	0.00006103515625	20	0.00006103515625
21	0.000030517578125	21	0.000030517578125
22	0.0000152587890625	22	0.0000152587890625
23	0.00000762939453125	23	0.00000762939453125
24	0.000003814697265625	24	0.000003814697265625
25	0.0000019073486328125	25	0.0000019073486328125

THIRD ANGLE PROJECTION

REMOVE BURRS AND BREAK SHARP CORNERS

DO NOT SCALE DWG

MATERIAL: SEE PARTS LIST

FINISH: NONE

DISK DRIVE MTG. KIT & CARTRIDGE

SCALE: NONE

SHEET 4 OF 4

REV	DESCRIPTION	DATE
A	RLØ1-AK CHASSIS	11/11/77
B	RLØ1-AK CHASSIS	11/11/77
C	RLØ1-AK CHASSIS	11/11/77

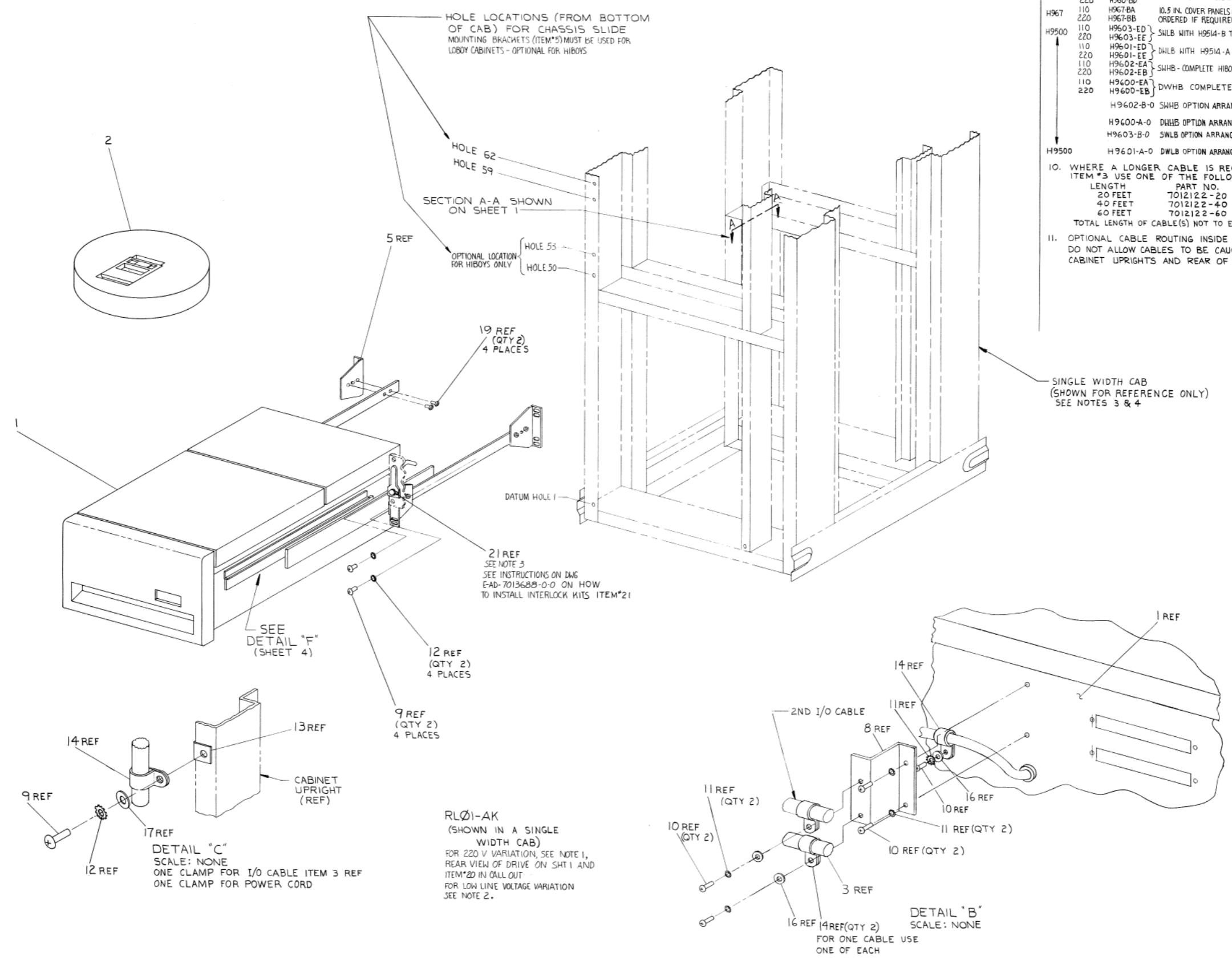
THESE DRAWINGS AND SPECIFICATIONS HEREBY ARE THE PROPERTY OF DIGITAL EQUIPMENT CORPORATION AND SHALL NOT BE REPRODUCED OR COPIED IN WHOLE OR IN PART AS THE BASIS FOR THE MANUFACTURE OR SALE OF ITEMS WITHOUT WRITTEN PERMISSION. COPYRIGHT © 1977 DIGITAL EQUIPMENT CORPORATION

NOTES: (CONT.)

9. CABINET OPTIONS INCLUDE SKINS, DOORS, COVERS, TRIM, & PAIR CONTROLLERS.

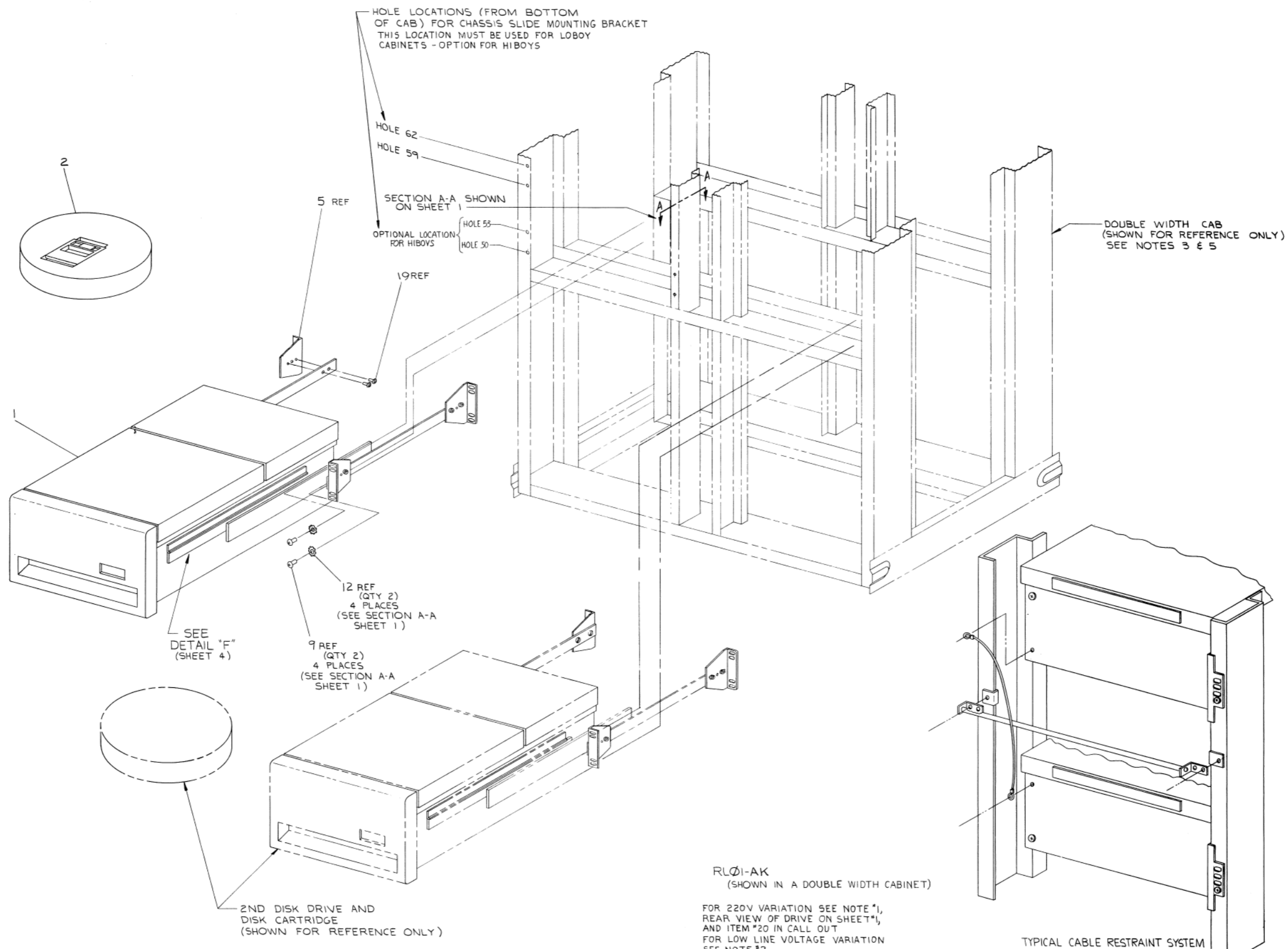
TYPE	VOLTAGE	DWG	REMARKS
H950	110	H960-BC	INCLUDES FIVE 10.5 IN. PANELS
	220	H960-BD	
H967	110	H967-BA	10.5 IN. COVER PANELS (H950-QA) MUST BE ORDERED IF REQUIRED.
	220	H967-BB	
H9500	110	H9603-ED	SWLB WITH H9514-B TOP COVERS.
	220	H9603-EE	
	110	H9601-ED	SWLB WITH H9514-A TOP COVERS.
	220	H9601-EE	
	110	H9602-EA	SWHB - COMPLETE HIROY CABINET.
	220	H9602-EB	
	110	H9600-EA	DWHB COMPLETE HIROY CABINET
	220	H9600-EB	
		H9602-B-0	SWHB OPTION ARRANGEMENT DWG. ORDER AS REQ'D
		H9600-A-0	DWHB OPTION ARRANGEMENT DWG. ORDER AS REQ'D
		H9603-B-0	SWLB OPTION ARRANGEMENT DWG. ORDER AS REQ'D
H9500		H9601-A-0	DWLB OPTION ARRANGEMENT DWG. ORDER AS REQ'D

10. WHERE A LONGER CABLE IS REQUIRED THAN ITEM #3 USE ONE OF THE FOLLOWING:
- | LENGTH | PART NO. |
|---------|------------|
| 20 FEET | 7012122-20 |
| 40 FEET | 7012122-40 |
| 60 FEET | 7012122-60 |
- TOTAL LENGTH OF CABLE(S) NOT TO EXCEED 100 FEET
11. OPTIONAL CABLE ROUTING INSIDE CHANNEL UPRIGHTS. DO NOT ALLOW CABLES TO BE CAUGHT BETWEEN CABINET UPRIGHTS AND REAR OF DISK DRIVE.



REVISIONS		
CHK	CHANGE NO.	REV.

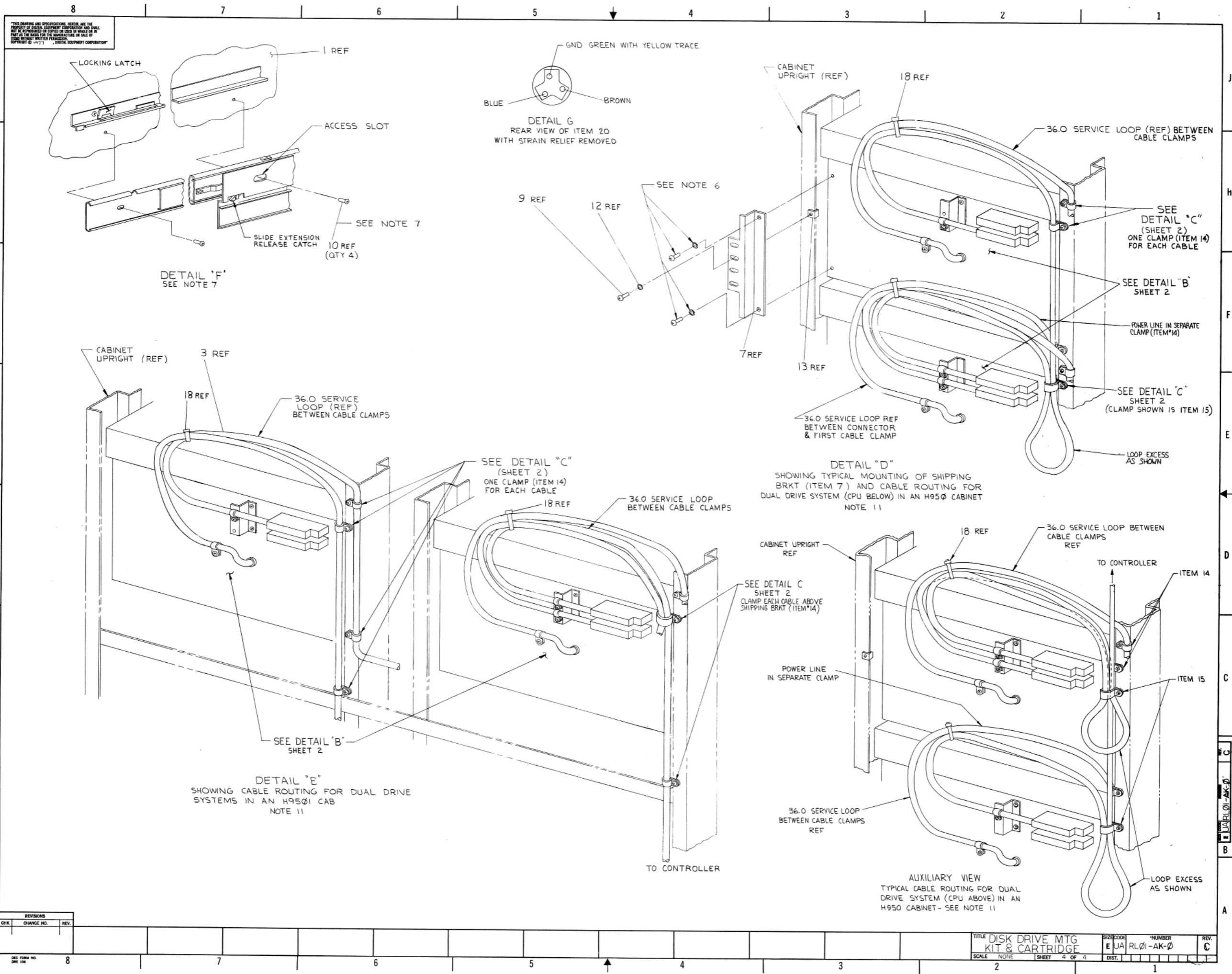
THIS DRAWING AND SPECIFICATIONS, HEREIN AND THE PROPERTY OF DIGITAL EQUIPMENT CORPORATION AND SHALL NOT BE REPRODUCED OR COPIED OR USED IN WHOLE OR IN PART AS THE BASIS FOR THE MANUFACTURE OR SALE OF ITEMS WITHOUT WRITTEN PERMISSION.
 COPYRIGHT © 1977 . DIGITAL EQUIPMENT CORPORATION



REVISIONS		
CHK	CHANGE NO.	REV.

TITLE DISK DRIVE MTG KIT & CARTRIDGE
 SCALE NONE SHEET 3 OF 4
 SIZE CODE NUMBER
 E JA RL01-AK-0
 DIST. 1

THIS DRAWING AND SPECIFICATIONS, HEREIN, ARE THE PROPERTY OF DIGITAL EQUIPMENT CORPORATION AND SHALL NOT BE REPRODUCED OR COPIED IN WHOLE OR IN PART WITHOUT THE WRITTEN PERMISSION OF SAID CORPORATION. COPYRIGHT © 1977, DIGITAL EQUIPMENT CORPORATION.



REVISIONS		
CHK	CHANGE NO.	REV.

