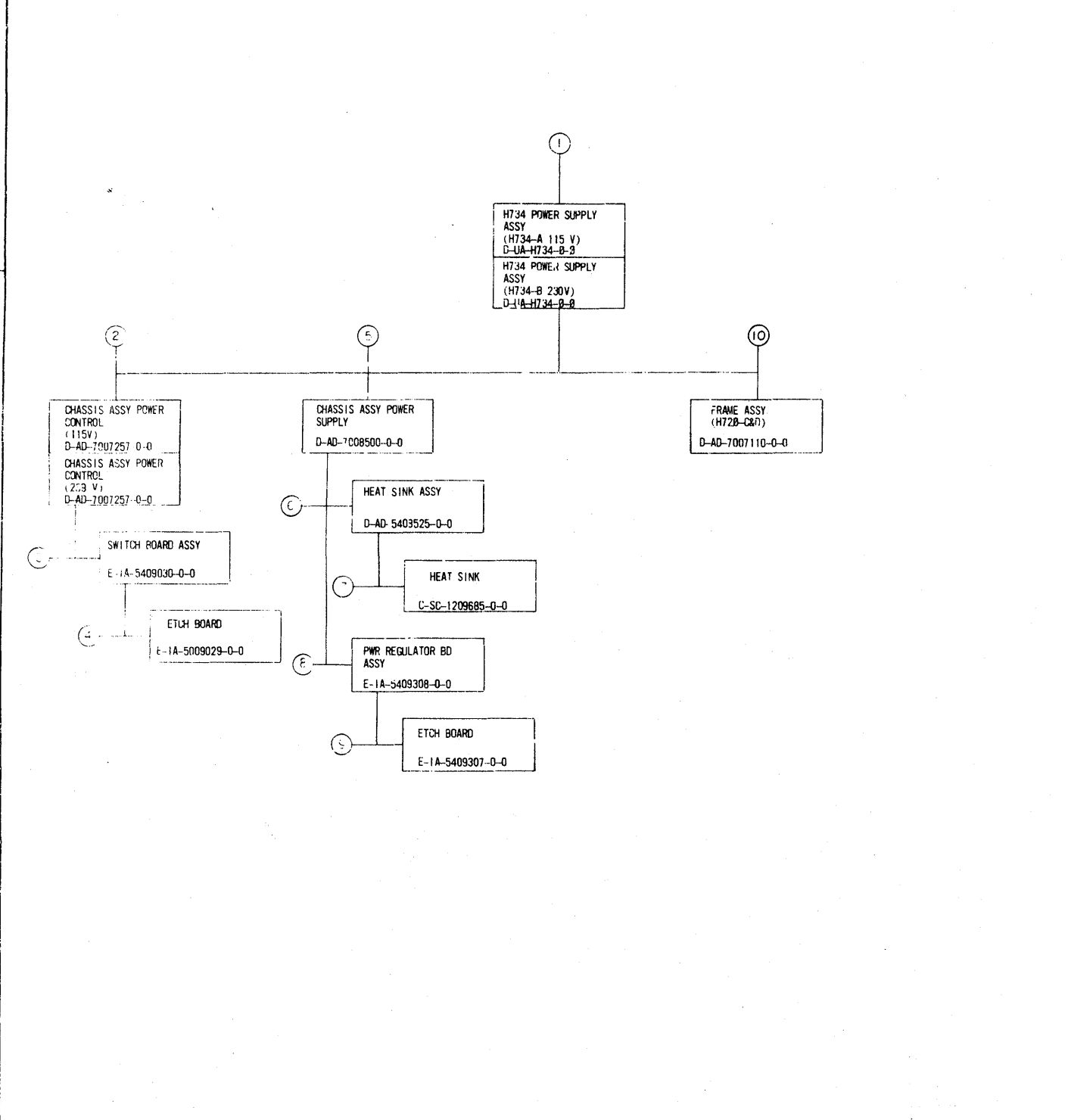


This drawing and specifications herein are the property of Digital Equipment Corporation and shall not be reproduced or copied or used in whole or in part as the basis for the manufacture or sale of items without written permission.

3-C-1241 ID 2

D
C
B
A

D
C
B
A



MECHANICAL			DEPT USAGE			ELECTRICAL			DEPT USAGE		
FIND NO.	DESCRIPTION	PART NO.	PROD	CUST	F/C	FIND NO.	DESCRIPTION	PART NO.	PROD	CUST	F/C
1	H734 POWER SUPPLY ASSY H734 POWER SUPPLY ASSY (PL) WIRE HARNESS H734 A&B COVER, TERMINAL STRIP (141 & 541)	D-UA-H734-0-0 A-PL-H734-B-0 D-1A-7007246-0-0 C-MD-7408463-0-0				1	MASTER LIST H734 CIRCUIT SCHEMATIC	A-ML-H734-0 D-CS-H734-B-1			
2	CHASSIS ASSY POWER CONTROL CHASSIS ASSY POWER CONTROL (PL) CHASSIS POWER CONTROL BRACKET, RELAY BRACKET, SUPPORT JUMPER	D-AD-7007257-0-0 A-PL-7007257-0-0 D-1A-5309362-0-0 B-1A-5309368-0-0 C-MD-5309521-0-0 B-1A-7007006-0-0				3	CIRCUIT SCHEMATIC	B-CS-5409030-0-1			
3	SWITCH BOARD ASSY X-Y COORDINATE HOLE LOC MODULE ECO HISTORY	E-1A-5409030-0-0 K-CO-5409030-0-0 B-MH-5409030-0-6				4	P.C. LAYOUT	PC-5009029-0-1			
4	ETCH BOARD P.C. LAYOUT	E-1A-5009029-0-0 PC-5009029-0-1				8	CIRCUIT SCHEMATIC	D-CS-5409308-0-1			
5	CHASSIS ASSY POWER SUPPLY CHASSIS ASSY POWER SUPPLY (PL) CHASSIS POWER SUPPLY BRACKET CAPACITOR BLOCK, MODULE SUPPORT BRACKET SUPPORT COVER, CHASSIS	D-AD-7008500-0-0 A-PL-7008500-0-0 E-1A-5309363-0-0 D-1A-5309366-0-0 B-MD-5309369-0-0 C-MD-5309521-0-0 C-1A-5309065-0-0				9	P.C. LAYOUT	PC-5009307-0-1			
6	HEAT SINK ASSY HEAT SINK ASSY (PL) COIL TRANSFORMER	D-AD-5408525-0-0 A-PL-5408525-0-0 C-SC-1609762-0-0									
7	HEAT SINK BUSHING	C-SC-1209685-0-0 A-SC-1209475-0-0									
8	PWR REGULATOR BD ASSY X-Y COORDINATE HOLE LOC MODULE ECO HISTORY	E-1A-5409308-0-0 X-CO-5409308-0-4 B-MH-5409308-0-6									
9	ETCH BOARD P.C. LAYOUT	E-1A-5409307-0-0 PC-5009307-1									
10	FRAME ASSY (H72B C&D) FRAME ASSY (H72B C&D) CHASSIS POWER SUPPLY SCREEN FAN	D-AD-7007110-0-0 A-PL-7007110-0-0 D-1A-7408392-0-0 C-MD-7404881-0-0									

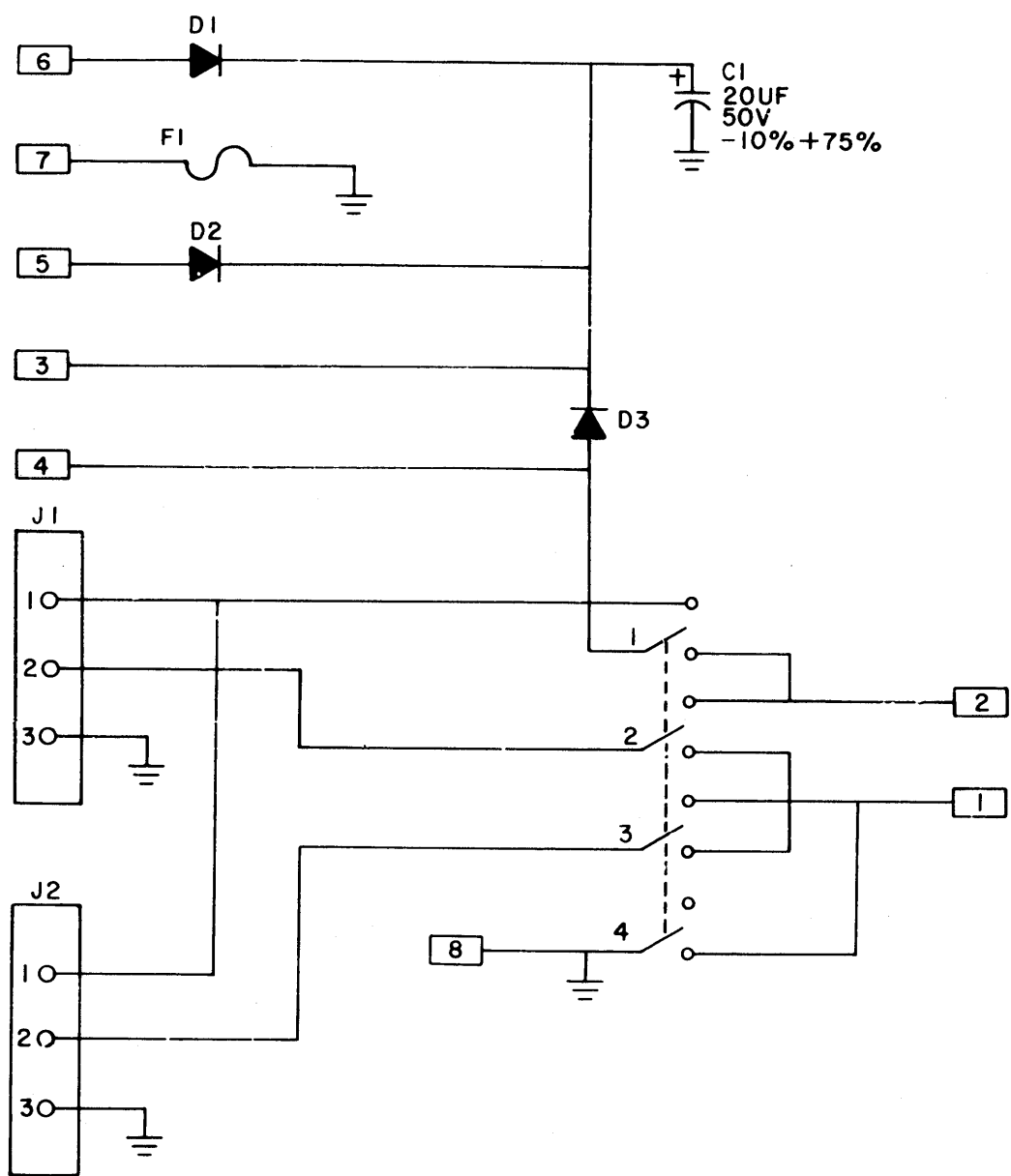
FIRST USED ON OPTION/MODEL FDR 1	DRN CHK'D ENG PROJ/ENG PROD NEXT HIGHER ASSY SCALE SHEET	DATE DATE DATE DATE DATE DATE DATE	DATE DATE DATE DATE DATE DATE DATE	digital EQUIPMENT CORPORATION MAINTENANCE DEPARTMENT
TITLE DRAWING INDEX LIST				SIZE CODE D DI
NUMBER A-ML-H734-0				REV
DIST				

REV. NO.
CHANGE NO.
CHK

REV. NO.
CHANGE NO.
CHK

REV A
 NUMBER 5409030-0-1
 SIZE B
 CODE CS

THIS SCHEMATIC IS FURNISHED ONLY FOR TEST AND MAINTENANCE PURPOSES. THE CIRCUITS ARE PROPRIETARY IN NATURE AND SHOULD BE TREATED ACCORDINGLY. COPYRIGHT 1971 BY DIGITAL EQUIPMENT CORPORATION



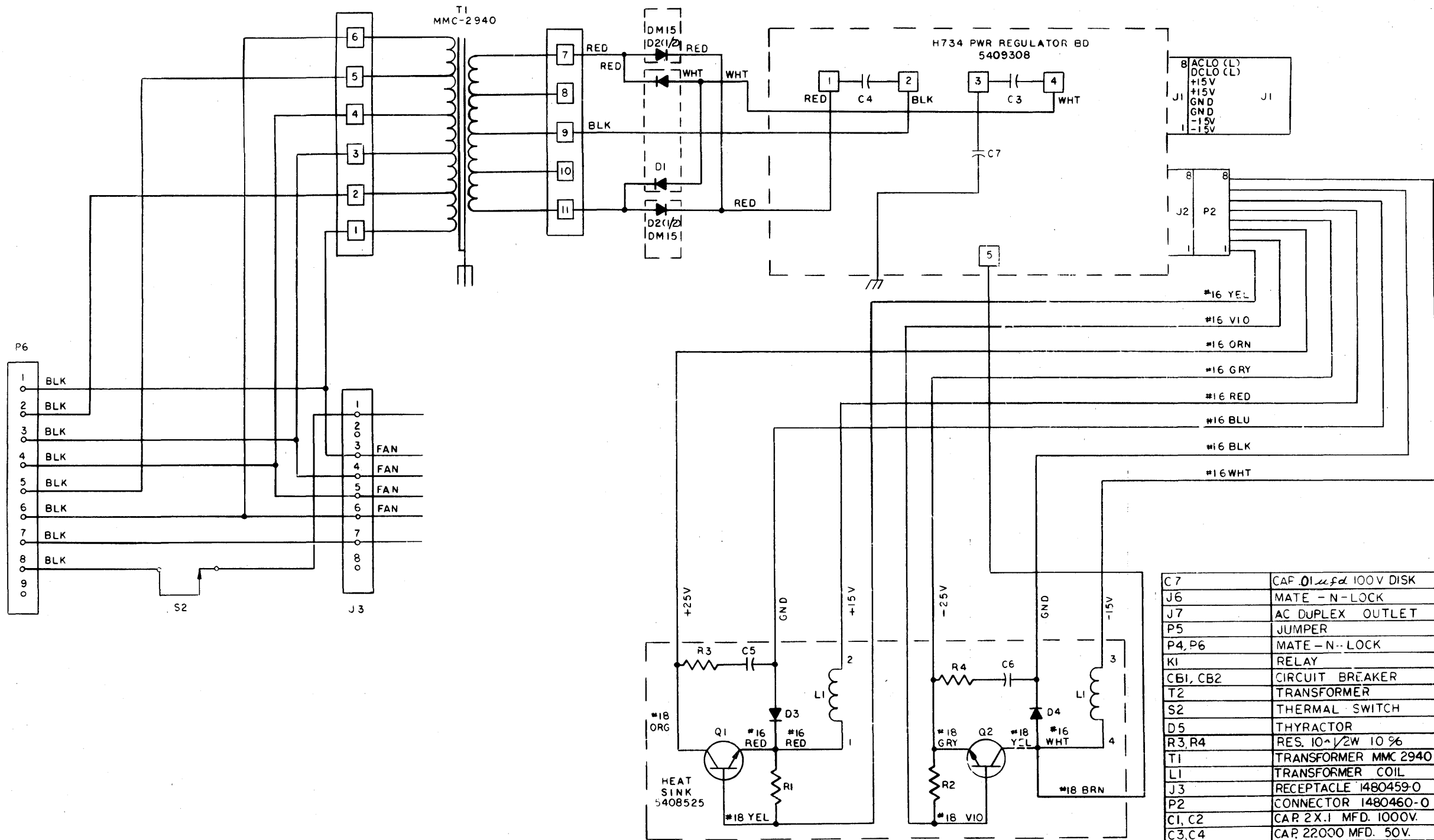
UNLESS OTHERWISE INDICATED:
 DIODES ARE IN4001
 F1 = 0.2 AMP (3AG) FUSE
 CONNECTORS ARE 12-09379-01
 □ = FASTON TABS

REVISIONS CHK CHG NO REV	DRN S. Cooper	DATE 3/10/71	TRANSISTOR & DIODE CONVERSION CHART				 EQUIPMENT CORPORATION MAYNARD, MASSACHUSETTS	TITLE POWER INTERLOCK			
	CHK'D R. Walden	DATE 3/5/71	DEC	EIA	DEC	EIA		SIZE B	CODE CS	NUMBER 5409030-0-1	REV A
	ENG. C. Blum	DATE 5/15/71	IN4001	MR-2064				PRINTED CIRCUIT REV B			
	PROC.	DATE									

FORM NO. 12-09379-01

THIS SCHEMATIC IS FURNISHED ONLY FOR TEST AND MAINTENANCE PURPOSES. THE CIRCUITS ARE PROPRIETARY IN NATURE AND SHOULD BE TREATED ACCORDINGLY. COPYRIGHT 1969 BY DIGITAL EQUIPMENT CORPORATION.

FOR CIRCUIT SCHEMATIC
SEE DWG. NO. D-CS-5409308-0-1



UNLESS OTHERWISE SPECIFIED
WIRE IS #14 GAUGE (STRANDED)

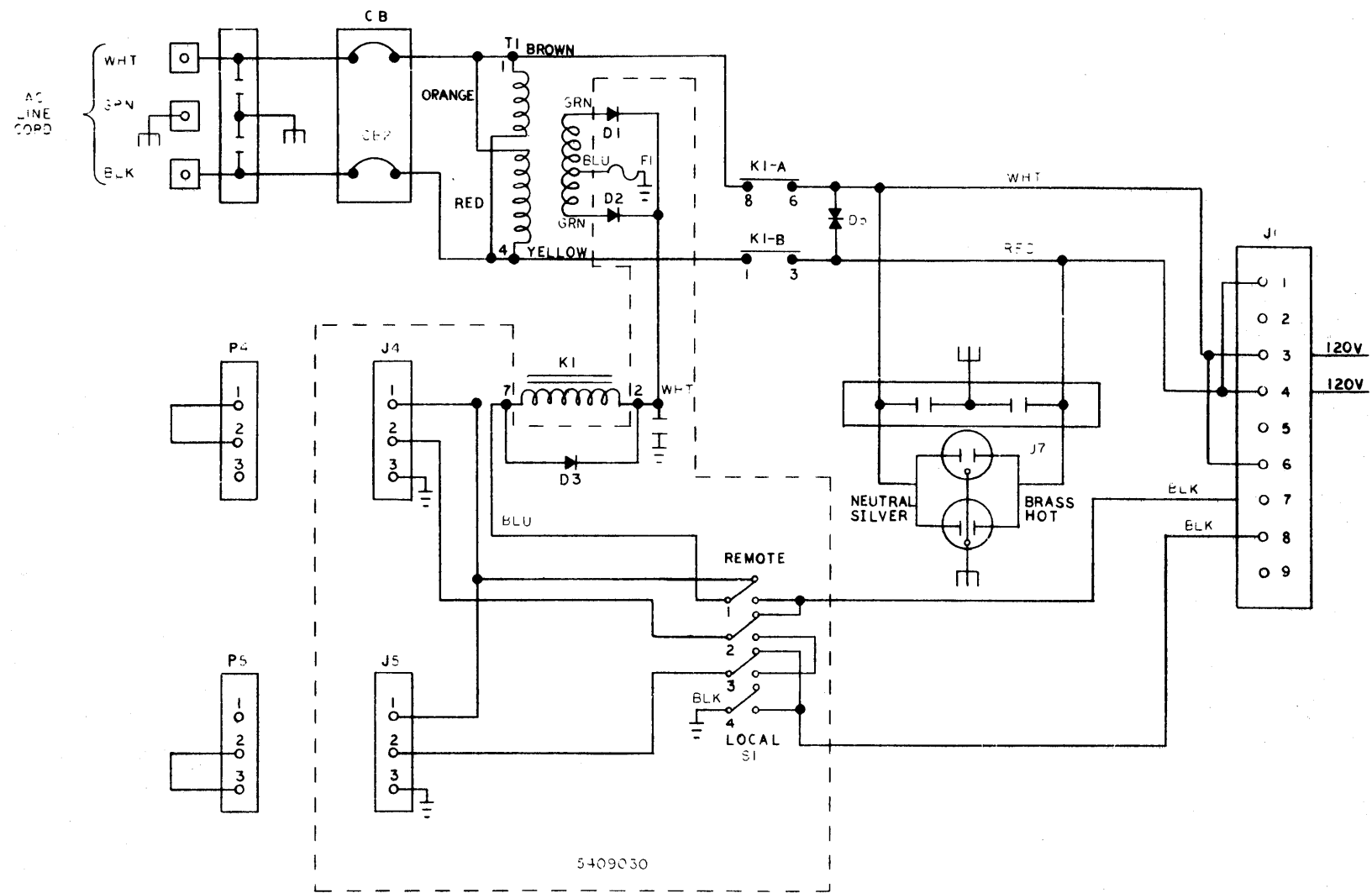
C7	CAP. 0.1 μ F 100V DISK	1001610
J6	MATE - N-LOCK	1209350-9
J7	AC DUPLEX OUTLET	1205351-9
P5	JUMPER	7007006-1
P4, P6	MATE - N-LOCK	1209351-9
K1	RELAY	1210277
CB1, CB2	CIRCUIT BREAKER	1210191-0
T2	TRANSFORMER	160150-0
S2	THERMAL SWITCH	1210199
D5	THYRACITOR	
R3, R4	RES. 10 Ω 1/2W 10%	130016R
T1	TRANSFORMER MMC 2940	1610284
L1	TRANSFORMER COIL	1609762
J3	RECEPTACLE 1480459-0	1209340-0
P2	CONNECTOR 1480460-0	1209340-0
C1, C2	CAP. 2 X .1 MFD. 1000V.	1002153
C3, C4	CAP. 22000 MFD. 50V.	1009189
C5, C6	CAP. 1 MFD. 150V.	1000063
R1, R2	RES. 27 Ω 1W 5% CC	1302558
Q1, Q2	TRANSISTOR 2N5301	1509737
D1, D2	DIODE BRIDGE DM15	1105799
D3, D4	DIODE 1N3899	1109781
HEAT SINK	HEAT SINK	5408525
H734PWR.REG.BD.	H734 PWR. REG. BD.	5409308
REF DESIGNATION	DESCRIPTION	PART NO.

SHEET 1 OF 3

REVISIONS CHG. NO. REV.	DATE	TRANSISTOR & DIODE CONVERSION CHART		TITLE PWR SUPPLY H734
	DEC 3 1969	DEC	EIA	
	DATE	2N5301	SAME	EQUIPMENT CORPORATION MAYNARD, MASSACHUSETTS
	DATE	1N3899	SAME	
	DATE			PRINTED CIRCUIT REV

THIS SCHEMATIC IS FURNISHED ONLY FOR TEST AND MAINTENANCE PURPOSES. THE CIRCUITS ARE PROPRIETARY IN NATURE AND SHOULD BE TREATED ACCORDINGLY. COPYRIGHT 1969 BY DIGITAL EQUIPMENT CORPORATION

REV 0
MOD 0



5409030

FOR CIRCUIT SCHEMATIC
SEE DWG B-GS-5409030-0-1

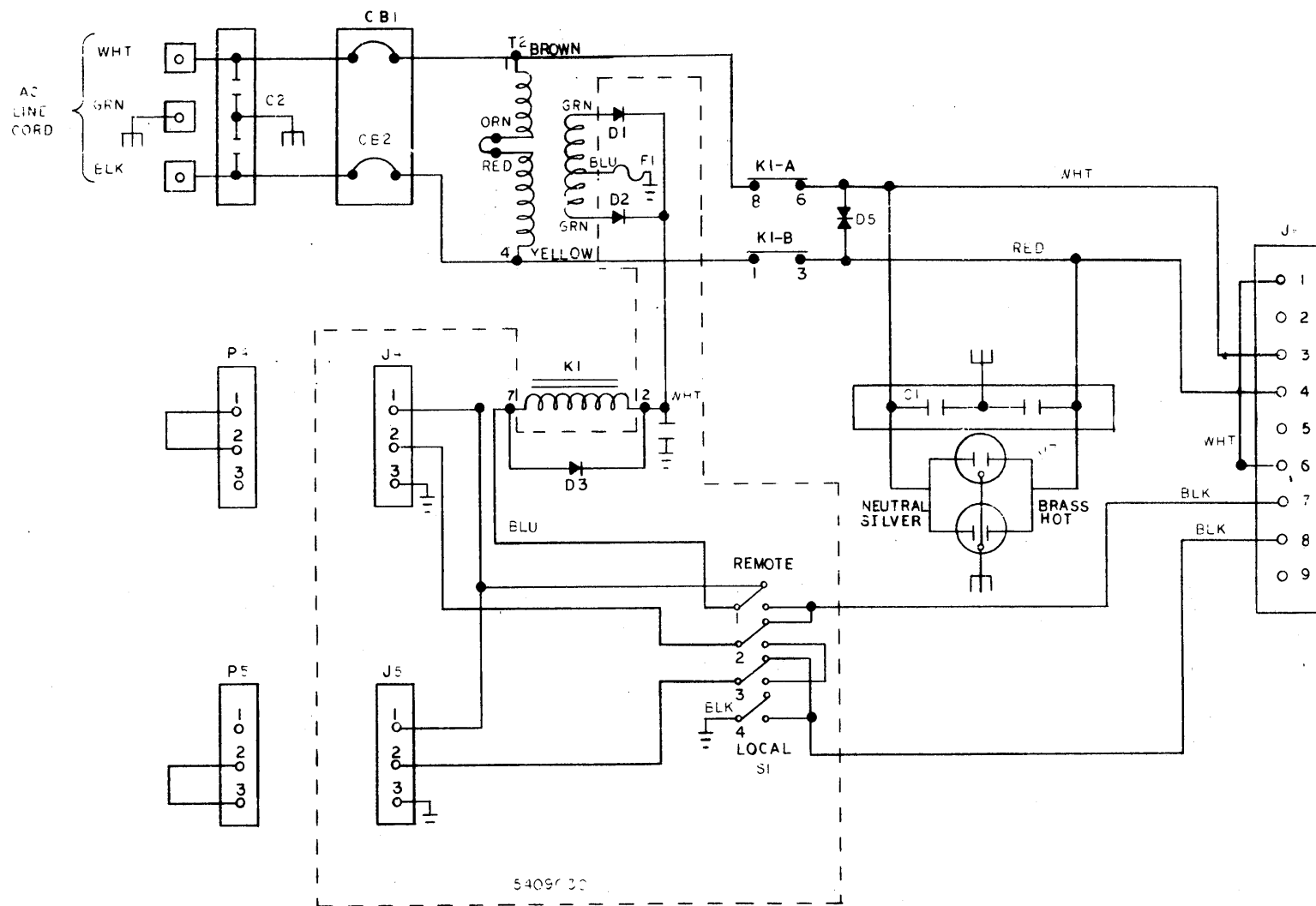
SHEET 2 OF 3

REVISIONS CHG NO REV	DESIGNED: <i>[Signature]</i> DATE: 12/27/71	TRANSISTOR & DIODE CONVERSION CHART				TITLE: AC CONT POWER SUPPLY (120V) NUMBER: H734-0-1 PRINTED CIRCUIT REV:
	CHECKED: <i>[Signature]</i> DATE: 1/17/72	DEC	JAN	FEB	MAR	
	DRAWN: <i>[Signature]</i> DATE: 1/17/72	APR	MAY	JUN	JUL	
	PROD: <i>[Signature]</i> DATE: 1/17/72	AUG	SEP	OCT	NOV	
EQUIPMENT CORPORATION MAYARD MASSACHUSETTS		SIZE: D	CODE: CS	REV:	REV:	

REV 0
MOD 0

THIS SCHEMATIC IS FURNISHED ONLY FOR TEST AND MAINTENANCE PURPOSES. THE CIRCUITS ARE PROPRIETARY IN NATURE AND SHOULD BE TREATED ACCORDINGLY. COPYRIGHT 1968 BY DIGITAL EQUIPMENT CORPORATION

1-0-75-H 50 d



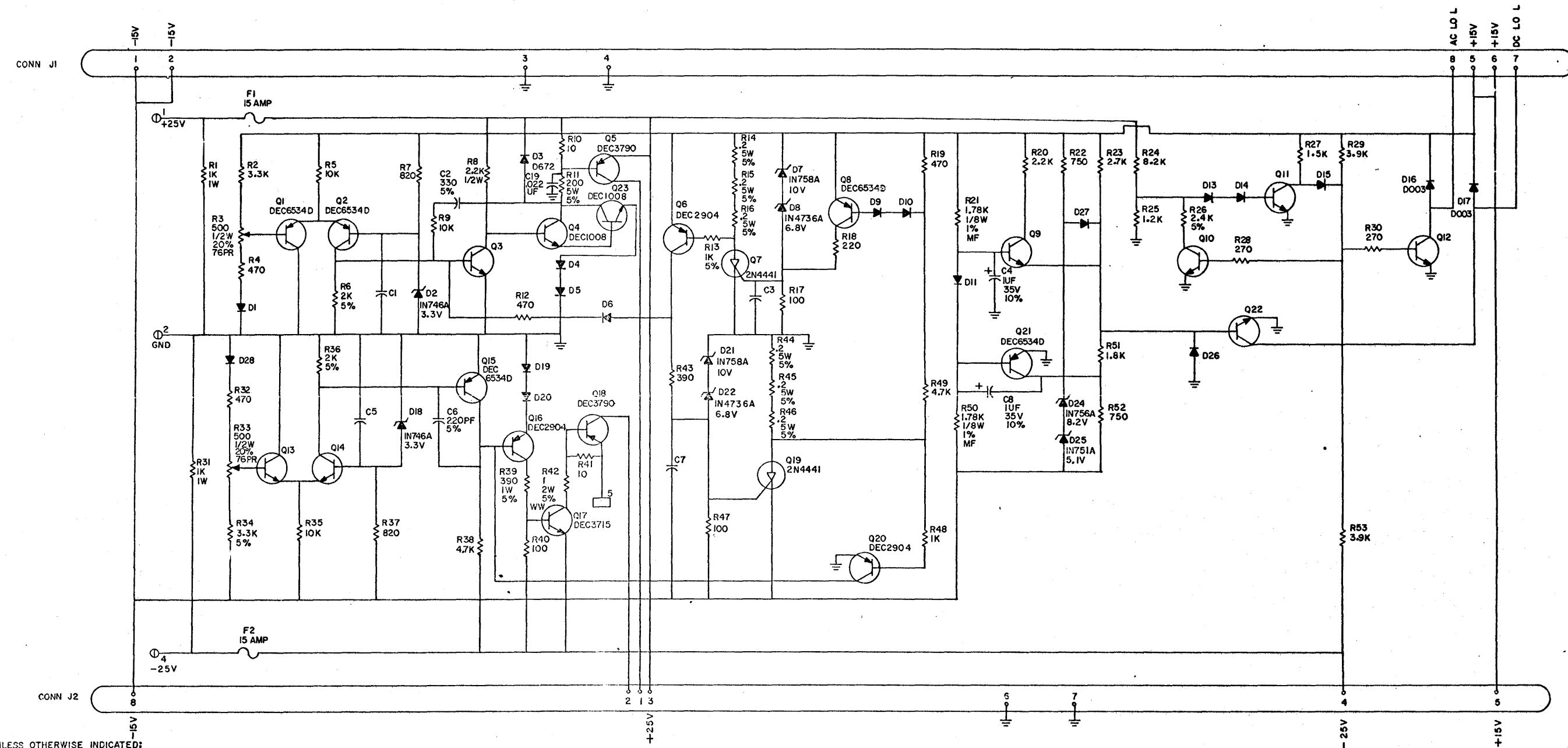
FOR CIRCUIT SCHEMATIC
SEE DWG B-CS-5409030-0-1

NOTE: J6 SHOWN WIRED FOR 240V INPUT. FOR 235V ±10% INPUT
TAKE JUMPER FROM J6-6 AND INSERT IT INTO J6-5.
FOR 225V ±10% INPUT, TAKE JUMPER FROM J6-6 AND
INSERT IT INTO J6-5 AND TAKE JUMPER J6-1 AND INSERT
IT INTO J6-2. FOR 218 ±10%, TAKE JUMPER FROM J6-
AND INSERT INTO J6-2 THEN TAKE JUMPER FROM J6-6 AND
INSERT INTO J6-5

SHEET 3 OF 3

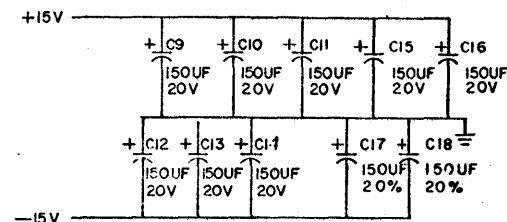
REVISIONS		DATE		TRANSISTOR & DIODE CONVERSION CHART				TITLE	
CHK'D	DATE	DEC	EIA	DEC	EIA	digital		AC CONT	
ENG'D	DATE	2N5301	SAME					POWER SUPPLY	
PRD	DATE	IN3899	SAME					(240V)	
								EQUIPMENT	
								CORPORATION	
								SIZE D CS NUMBER 17342	
								REV	

THIS DRAWING IS FOR INFORMATION PURPOSES ONLY. IT IS NOT TO BE USED FOR REPAIR OR MAINTENANCE PURPOSES. THE CIRCUITS ARE PROPRIETARY IN NATURE AND SHOULD BE TREATED ACCORDINGLY. COPYRIGHT © 1971 BY DIGITAL EQUIPMENT CORPORATION.



UNLESS OTHERWISE INDICATED:
 RESISTORS ARE 1/4W, 10%
 CAPACITORS ARE .1UF, 100V, 20%
 DIODES ARE D664
 TRANSISTORS ARE DEC3009B

□ = FASTON TAB
 ○ = SCREW TERMINAL



DEC	EIA	DEC	EIA
2N4904	IN758A	D003	IN934
2N4441	2N4441	1N4736A	1N4736A
2N3904	2N3904	1N4758A	1N4758A
2N4441	2N4441	1N755A	1N755A
2N4441	2N4441	1N751A	1N751A
2N4441	2N4441	1N756A	1N756A

DATE: 11-27-71
 DRAWN: [Name]
 CHECKED: [Name]
 DESIGNED: [Name]
 APPROVED: [Name]

TITLE	H734 REGULATOR BOARD
NUMBER	5409308
SIZE	D
CODE	CS
SCALE	
REV	D

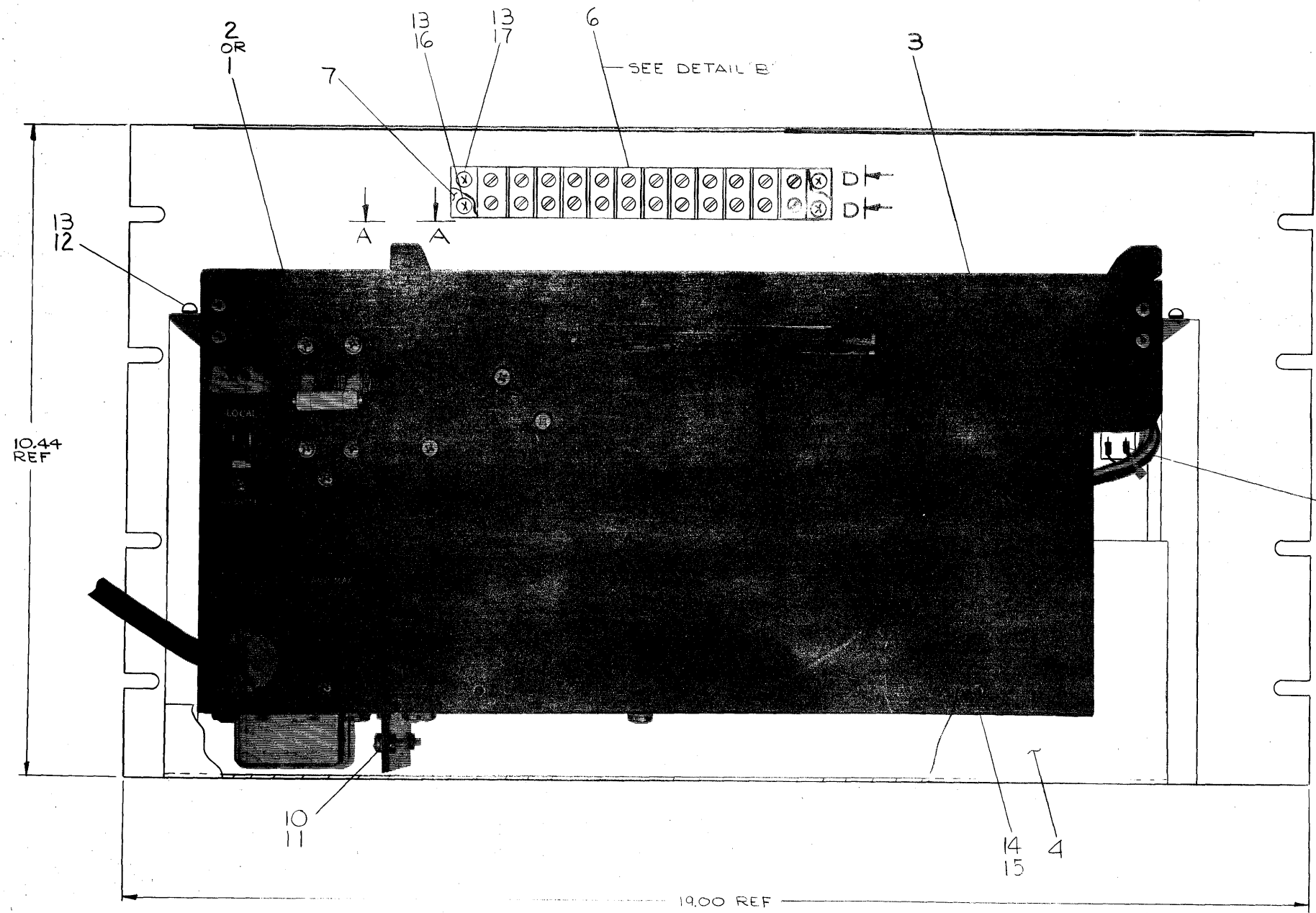
EQUIPMENT CORPORATION
 PRINTED CIRCUIT REV

5409308-0-1
 REV D
 5409308-0-1
 REV D

This drawing and specifications, herein, are the property of Digital Equipment Corporation and shall not be reproduced or copied in whole or in part as the basis for the manufacture or sale of items without written permission.

LEGEND	
NUMBER	VARIATION
H734-A	115 V
H734-B	230 V

NOTES:
 1. CONNECTORS MARKED J4 & P4 ARE TO BE CONNECTED BEFORE ASSEMBLING ITEM #1 TO ITEM #2.
 2. FOR DWG INDEX LIST REFER TO DWG D-DI-H734-0-2.



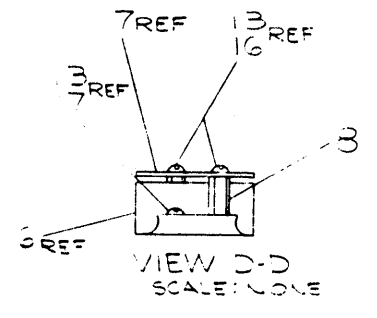
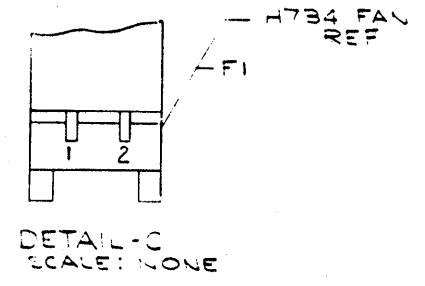
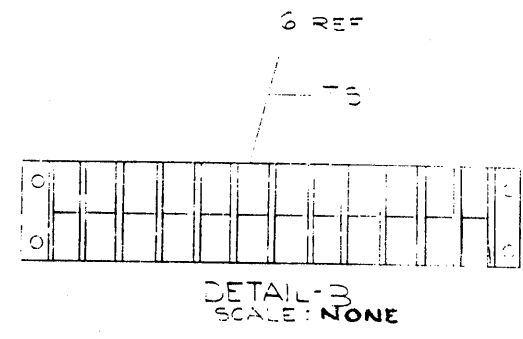
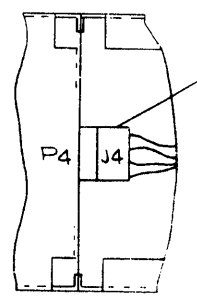
REV.	
CHG	
NO.	

FIRST USED ON OPTION/MODEL
PDP 11

DO NOT SCALE DRAWING
 UNLESS OTHERWISE SPECIFIED
 DIMENSION IN INCHES
 TOLERANCES
 DECIMALS - FRACTIONS ANGLES
 ±.005 - ±.1/32 ± 0°30'
 FINAL SURFACE QUALITY
 REMOVE BURRS AND BREAK SHARP CORNERS

QTY.	DESCRIPTION	PART NO.	ITEM NO.
PARTS LIST			
DRN.	DATE	digital EQUIPMENT CORPORATION BATHURST, MASSACHUSETTS TITLE H734 POWER SUPPLY ASSY SIZE/CODE NUMBER REV. DUA H734-0-0	
CHKD.	DATE		
APP.	DATE		
PROD.	DATE		
NEXT HIGHER ASSY			
A-ML-H734-0			
SCALE			
SHEET 1 OF 2			

HARNESS WIRE TABLE						
ITEM NO.	DESCRIPTION		FROM HARNESS	TO POWER	REMARKS	
	AWG	COLOR	NUMBER	SUPPLY LOCATION		
5	14	WHT	1	TSI-1	DETAIL B	
		RED	2	2		
	14	WHT	3	3		
		RED	4	4		
	14	WHT	5	1		
		RED	6	2		
	22	YEL	7	5		
	22	VIO	8	6		
	14	ORN	9	7		
		BLK	10	8		
		BLU	11	9		
		ORN	12	10		
		BLK	13	11		
		BLU	14	SI-12		
	14	RED	15	FI-1		DETAIL C
		WHT	16	FI-2		
	BLU			J1 IS LOCATED ON PWR REG BD		
	BLK					
	BLK	P1	J1			
	ORN					
	ORN					
	VIO					
	YEL			J3 IS LOCATED ON BACK OF H734 P.S.		
	RED					
	WHT	P3	J3			
	RED					
5		WHT				



FIRST USED ON OPTION MODEL	QTY	DESCRIPTION	PART NO	ITEM NO
PARTS LIST				
UNLESS OTHERWISE SPECIFIED DIMENSION IN INCHES TOLERANCES	DRN 7/23/72	DATE	digital EQUIPMENT CORPORATION MAYFIELD MASSACHUSETTS	
DECIMALS	CHK'D	DATE	TITLE	
ANGLES	EMP	DATE	H734	
REMOVE BURRS AND BREAK SHARP CORNERS SURFACE QUALITY	PROJ ENGR	DATE	POWER SUPPLY ASSY	
MATERIAL	PROD	DATE	DCA-734-0-0	
FINISH	SCALE	SHEET	NUMBER	

DIGITAL EQUIPMENT CORPORATION
MAYNARD, MASSACHUSETTS
PARTS LIST

MADE BY G. FLANDERS	CHECKED <i>R. Cook</i>	SECTION
DATE 6-22-71	DATE 7-1-71	1
ENG <i>B.D. Welch</i>	PROD <i>D. Hall</i>	ISSUED SECT.
DATE 7-8-71	DATE 7/8/71	1

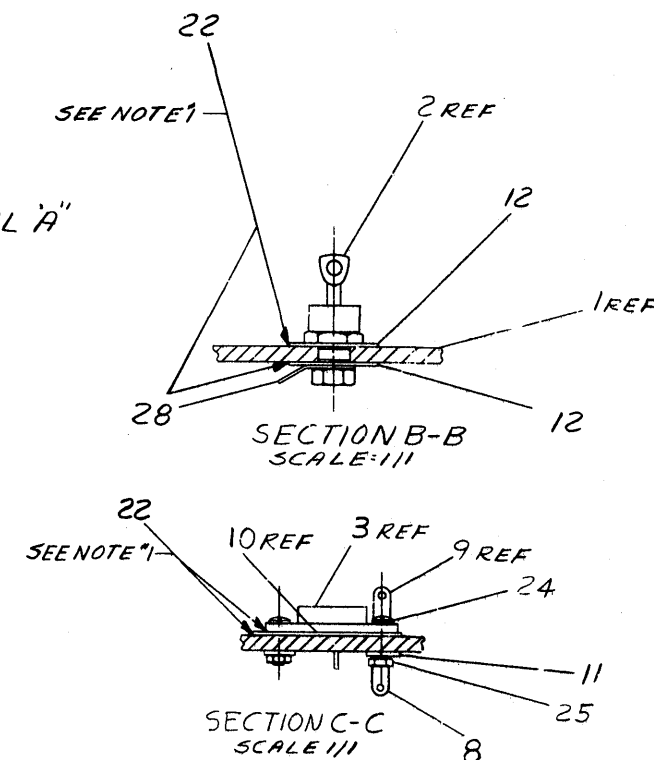
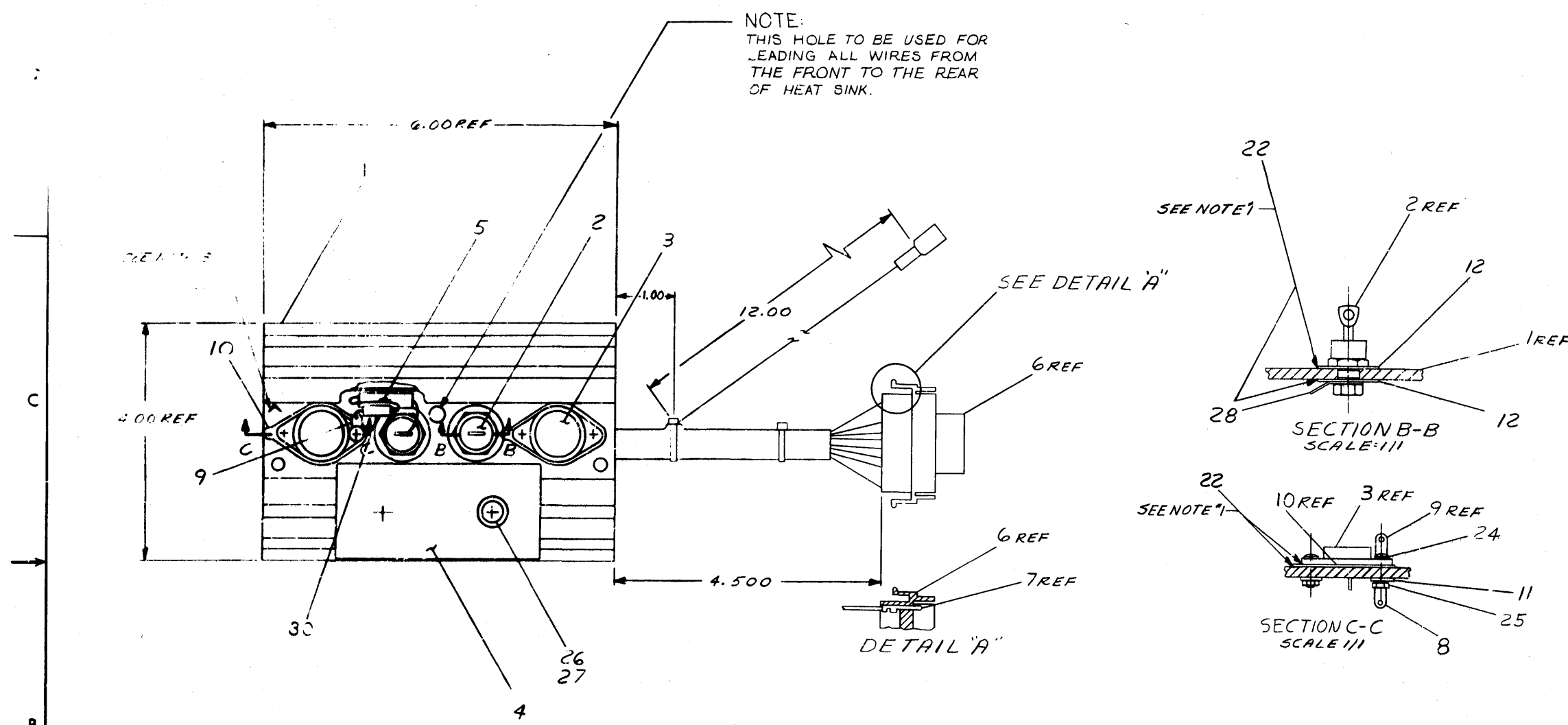
QUANTITY / VARIATION

ITEM NO.	DWG NO. / PART NO.	DESCRIPTION	QUANTITY / VARIATION														
			H734-A (115 V)	H734-B (230 V)													
1	D-AD-7007257-3-0	CHASSIS ASS'Y POWER CONTROL	1														
2	D-AD-7007257-4-0	CHASSIS ASSY, POWER CONTROL		1													
3	D-AD-7008500-0-0	CHASSIS ASSY, POWER SUPPLY	1	1													
4	D-AD-7007110-0-0	FRAME ASSY (H720- C & D)	1	1													
5	D-IA-7007246-0-0	WIRE HARNESS H734 A & B	1	1													
6	9006917	TERM STRIP #12-541	1	1													
7	C-MD-7408463-12-0	COVER TERMINAL STRIP (141 & 541)	1	1													
8	9006807	SPACER 1/4 A.F. X 3/4 LG #6	2	2													
9	9107305	TUBING SHRINKABLE 3/16 O.D.	2	2													
10	9006036-1	SCR PHL HD PAN #8-32 X 5/16 SST	4	4													
11	9006634	WASHER INT TOOTH #8	4	4													
12	9006022-1	SCR PHL HD PAN #6-32 X 3/8 SST	2	2													
13	9007649	WASHER EXT TOOTH #6	6	6													
14	9006071-3	SCR PHL HD TRUSS #10-32 X 3/8 SST	2	2													
15	9006635	WASHER INT TOOTH #10	2	2													
16	9007853-1	SCR PHL HD PAN #6-32 X 1-1/8 SST	2	2													
17	9006026-1	SCR PHL HD PAN #6-32 X 3/4 SST	2	2													

TITLE	ASSY NO.	SIZE	CODE	NUMBER	REV.	ECO NO.
H734 POWER SUPPLY ASS'Y	D-UA-H734-0-0	A	PL	H734-0-0		
	SHEET 1 OF 1	DIST.	G			

- NOTES:
1. APPLY ITEM #22 (SILICONE COMPOUND) BETWEEN WASHER (ITEM #2), HEAT SINK & DIODE, FOR DIODES (ITEM #2) FOR TRANSISTORS (ITEM #3), APPLY BETWEEN TRANSISTOR & WASHER (ITEM #10), ALSO BETWEEN WASHER & HEAT SINK.
 2. RUN RED LEAD FROM TRANSFORMER COIL TO PT. DI-B, CUT LEAD & SOLDER. WITH REMAINING LEAD, WIRE FROM PT. DI-B TO PT. QI-E.
 3. ORIENTATION MARK (A) TO BE LOCATED AS SHOWN WHEN ASSEMBLING UNIT

NOTE:
THIS HOLE TO BE USED FOR LEADING ALL WIRES FROM THE FRONT TO THE REAR OF HEAT SINK.



REV	DATE	DESCRIPTION
A	12-3-61	INITIAL DESIGN
B	12/16/61	REVISED TO INCLUDE...
C	12/16/61	REVISED TO INCLUDE...
D	12/16/61	REVISED TO INCLUDE...

FIRST USED ON OPTION/MODEL
PDPII

DO NOT SCALE DRAWING	UNLESS OTHERWISE SPECIFIED
TOLERANCES	ANGLES
DECIMALS ± .006	FRACTIONS ± 1/64
FINAL SURFACE QUALITY	REMOVE BURRS AND BREAK SHARP CORNERS
MATERIAL	FINISH

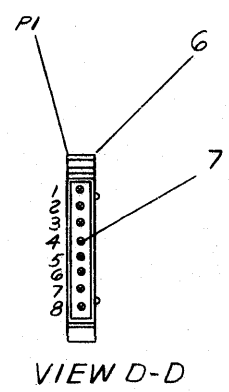
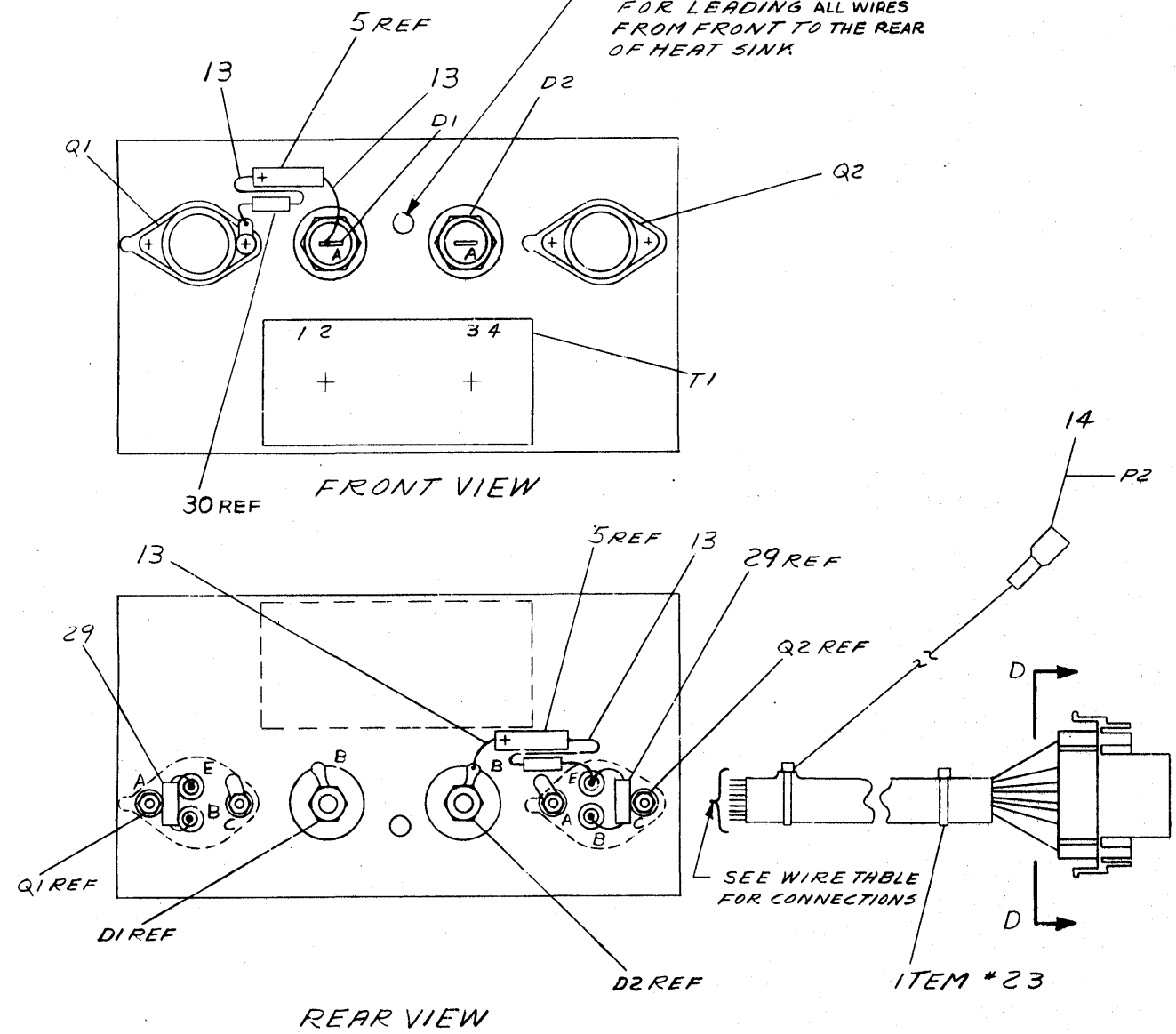
QTY.	DESCRIPTION	PART NO.	ITEM NO.
PARTS LIST			
	digital EQUIPMENT CORPORATION MAYNARD, MASSACHUSETTS		
HEAT SINK ASSY			
SCALE	1/11	SIZE CODE	DAD 5408525-0-0
SHEET	1 OF 2	DIST.	

This drawing and specifications, herein, are the property of Digital Equipment Corporation and shall not be reprinted or copied or used in whole or in part as the basis for the manufacture or sale of items without written permission.

D AD 5408525-0-0 2

WIRE TABLE								
ITEM NO	DESCRIPTION	FROM		TO				
		AWG	COLOR	CONNECTION	WITH		CONNECTION	WITH
4	16 RED			T1-1	-	D1-B	SOLDER	SEE NOTE "2"
	16 RED			D1-B	SOLDER	Q1-E	SOLDER	
4	16 RED			T1-2	-	P1-5	ITEM #7	
4	16 WHT			T1-3	-	P1-8	ITEM #7	
4	16 WHT			T1-4	-	Q2-A		
20	18 VIO			Q2-B	SOLDER	P1-2		
19	18 ORN			Q1-C		P1-3		
18	18 GRV			Q2-E		P1-4		
17	18 BLU			D1-A		P1-6		
16	18 BLK			D2-B		P1-7		
21	18 YEL			Q1-B		P1-1	ITEM #7	
21	18 YEL			D2-A		Q2-A	SOLDER	
15	18 BRN			D2-A	SOLDER	P2	ITEM #14	

NOTE:
THIS HOLE TO BE USED FOR LEADING ALL WIRES FROM FRONT TO THE REAR OF HEAT SINK



REV	CHANGE NO

FIRST USED ON OPTION / MODEL
+ +

DO NOT SCALE DRAWING
UNLESS OTHERWISE SPECIFIED
DIMENSION IN INCHES
TOLERANCES
DECIMALS ± .005
FRACTIONS ± 1/64
ANGLES ± 0°30'
FINAL SURFACE QUALITY
REMOVE BURRS AND BREAK SHARP CORNERS

QTY	DESCRIPTION	PART NO.	ITEM NO.
PARTS LIST			
		EQUIPMENT CORPORATION <small>MAYNARD, MASSACHUSETTS</small>	
HEAT SINK ASSY			
MATERIAL		NEXT HIGHER ASSY	
FINISH		SCALE 1/1	
SHEET 2 OF 2		D AD 5408525-0-0	

D AD 5408525-0-0

DIGITAL EQUIPMENT CORPORATION

MAYNARD, MASSACHUSETTS

PARTS LIST

MADE BY P. MARCOTTE	CHECKED K. RUSS	SECTION
DATE 12/1/69	DATE 12/8/69	1
ENG <i>P. Marcotte</i>	PROD <i>T. MacDonell</i>	ISSUED SECT.
DATE 12/23/69	DATE 12/23/69	1

QTY/VAR

ITEM NO.	DWG NO./PART NO. CL BASIC VAR.	DESCRIPTION	QTY/VAR	UNIT COST	UNIT QUANTITY	QUANTITY ISSUED
1	C-SC-1209685-0-0	HEAT SINK	1			
2	1109781	DIODE IN3899	2			
3	1509737	TRANSISTOR 2N5301	2			
4	C-SC-1609762-0-0	COIL, TRANSFORMER	1			
5	1000063	CAPACITOR IMFD 150 VDC	2			
6	1209340-01	CONNECTOR #1-480460-0 MATE-N-LOCK	1			
7	1209378-01	PIN #60620-4 AMP	8			
8	9006761	TERMINAL #2104-06-00 SHAKEPROOF	2			
9	9006762	TERMINAL #2103-06-00 SHAKEPROOF	1			
10	9006721	INSULATED WASHER #294457	2			
11	9007951	NYLON SHOULDER WASHER	4			
12	9006723	WAFER INS.	4			
13	9107256-00	#22 TEFLON TUBING	A/R			
14	9007917	SOLDERLESS CONN #50902 ARKLESS	1			
15	9107360-11	#18 STRD TEF INS WIRE BRN	A/R			
16	9107360-00	#18 STRD TEF INS WIRE BLK	A/R			
17	9107360-66	#18 STRD TEF INS. WIRE BLU	A/R			
18	9107360-88	#18 STRD TEF INS. WIRE GRY	A/R			
19	9107360-33	#18 STRD TEF INS WIRE *ORN	A/R			
20	9107360-77	#18 STRD TEF INS WIRE VIO	A/R			
21	9107360-44	#18 STRD TEF INS WIRE YEL	A/R			
22		DOW #340 SILICON COMPOUND	A/R			

TITLE HEAT SINK ASSY	ASSY NO. D-AD-5408525-0-0	SIZE A	CODE PL	NUMBER 5408525-0-0	REV. D	ECONO. H720-000011
	SHEET 1 OF 2	DIST.				

DIGITAL EQUIPMENT CORPORATION

MAYNARD, MASSACHUSETTS

PARTS LIST

MADE BY P. MARCOTTE	CHECKED K. RUSS	SECTION
DATE 12/1/69	DATE 12/8/69	1
ENG <i>P. Marcotte</i>	PROD <i>T. MacDonell</i>	ISSUED SECT.
DATE 12/23/69	DATE 12/23/69	1

QTY/VAR

ITEM NO.	DWG NO./PART NO. CL BASIC VAR.	DESCRIPTION	QTY/VAR	UNIT COST	UNIT QUANTITY	QUANTITY ISSUED
23	9007031	TIE WRAP #SST-1-B FANDUIT	2			
24	9007793	SCR PHL PAN HD 6-32 X 9/16 LG SST	4			
25	9006560	KEPS NUT #6-32 SST	4			
26	9006080-3	SCR PHL PAN HD #10-32 X 1-3/4" LG SST	2			
27	9007651	LOCK WASHER #10 EXT TOOTH	2			
28	9006764	TERMINAL #2101-14-00 SHAKEPROOF	2			
29	1302558	RESISTOR 27Ω 1W ± 5%	2			
30	1300168	RESISTOR 10Ω 1/2 W ± 5%	2			

TITLE HEAT SINK ASSY	ASSY NO. D-AD-5408525-0-0	SIZE A	CODE PL	NUMBER 5408525-0-0	REV. D	ECONO.
	SHEET 2 OF 2	DIST.				

