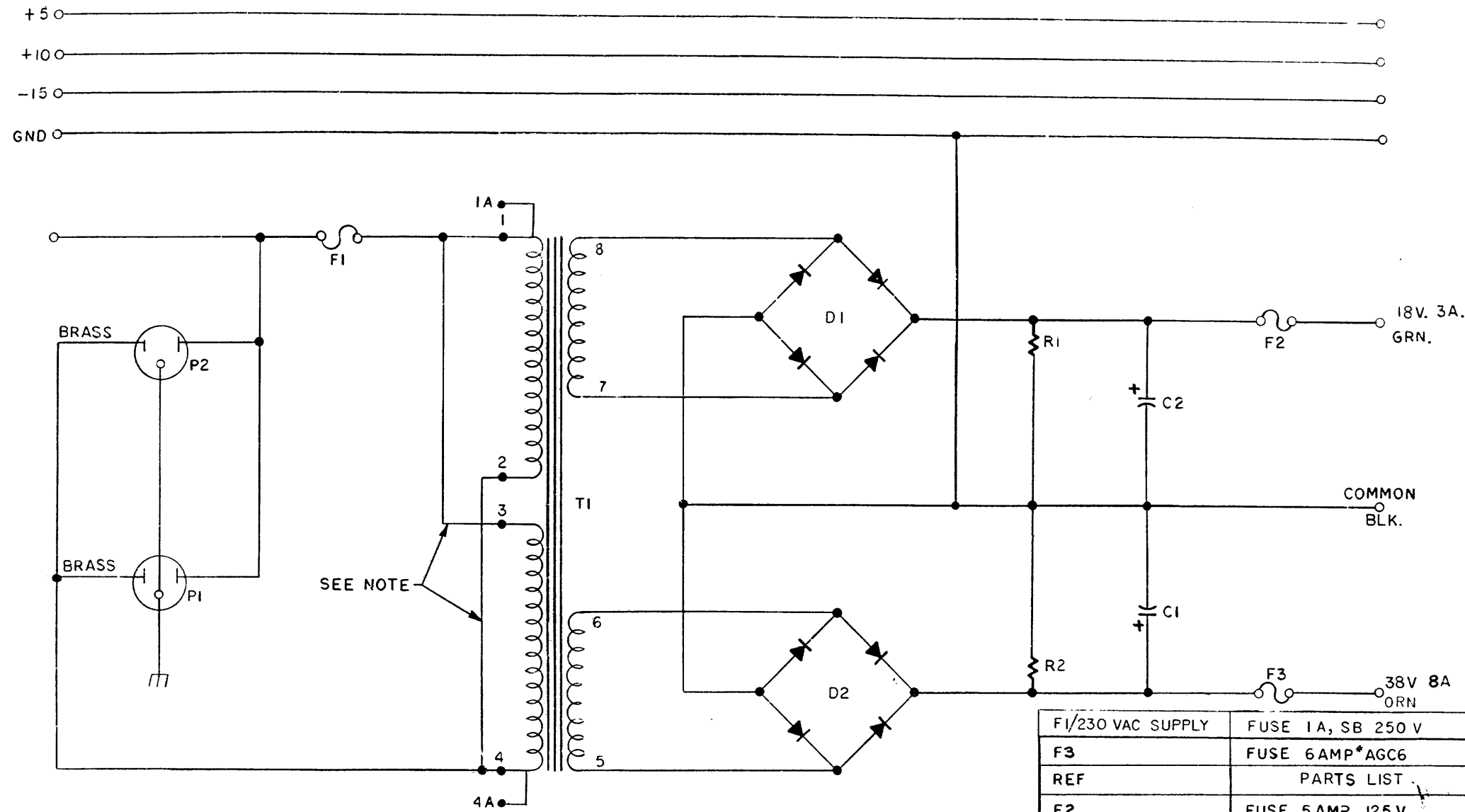


THIS SCHEMATIC IS FURNISHED ONLY FOR TEST AND MAINTENANCE PURPOSES. THE CIRCUITS ARE PROPRIETARY IN NATURE AND SHOULD BE TREATED ACCORDINGLY. COPYRIGHT 1969 BY DIGITAL EQUIPMENT CORPORATION



NOTE

INPUT VOLT 50/60 CPS	JUMPER
117 V	1A-3, 2-4A
220 V	2-3

PI/115 VAC SUPPLY	RECEPTACLE	125 V	1201251-0	R1, R2	FIXED RES. 25W 100 Ω	1302583
P2/115 VAC SUPPLY	PLUG	125 V	1209983	D1, D2	REC BRIDGE DM1 OR REC BRIDGE DM2	1102933 1105397
P1/230 VAC SUPPLY	RECEPTACLE	250V	1201251-1	P1	RECEPTACLE 16C4	1201251
P2 230 VAC SUPPLY	PLUG	250V	9008854	P2	PLUG 160-5	1201252
REF DESIGNATION	DESCRIPTION	PART NO.	REF DESIGNATION	DESCRIPTION	PART NO.	

F1/230 VAC SUPPLY	FUSE 1A, SB 250 V	9007213
F3	FUSE 6AMP*AGC6	1209361
REF	PARTS LIST	A-PL-725-0-0
F2	FUSE 5AMP. 125V	9007221
F1/115VAC SUPPLY	FUSE 3AMP 125V	9007218
C1	CAP. 22000 MFD. 50V.	1009189
C2	CAP 35000 MFD. 25V.	1000098
T1	TRANS. #T-7959C	16 09683

REV.	CHG NO.	REV.
1	00006	A
2	00007	B
3	00008	C
4	00010	D
5	00011	E
6	00085	F

DRN.	DATE	CHKD.	DATE	APP.	DATE
<i>R. H. ...</i>	8-20-69	<i>D. Hoag</i>	3-22-69	<i>E. ...</i>	11/18/69
<i>E. ...</i>				<i>E. ...</i>	11/18/69
<i>E. ...</i>				<i>E. ...</i>	11/18/69

TRANSISTOR & DIODE CONVERSION CHART			
DEC	EIA	DEC	EIA

**digital** EQUIPMENT CORPORATION  
MAYNARD, MASSACHUSETTS

TITLE: **POWER SUPPLY 725**

SIZE: C CODE: CS NUMBER: 725-0-1 REV: F

PRINTED CIRCUIT REV.

REV. F  
NUMBER 725-0-1  
SIZE CODE C CS