

digital

861

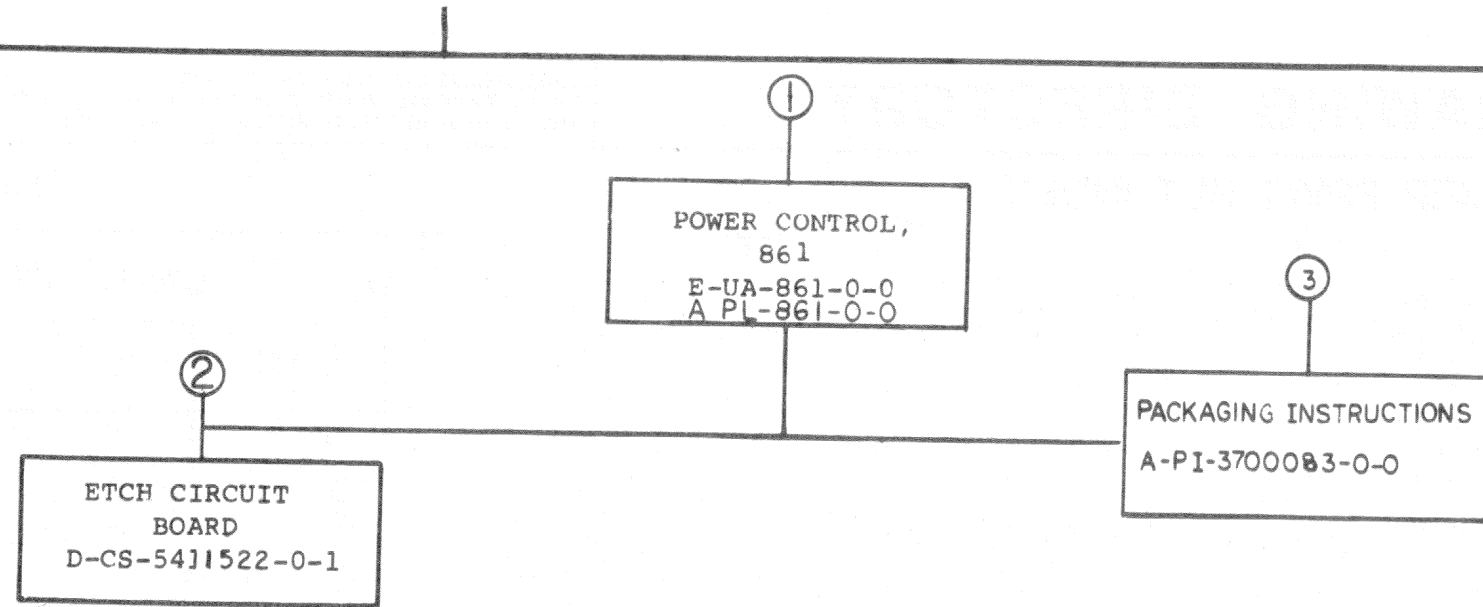
Engineering Drawings

Digital Equipment Corporation

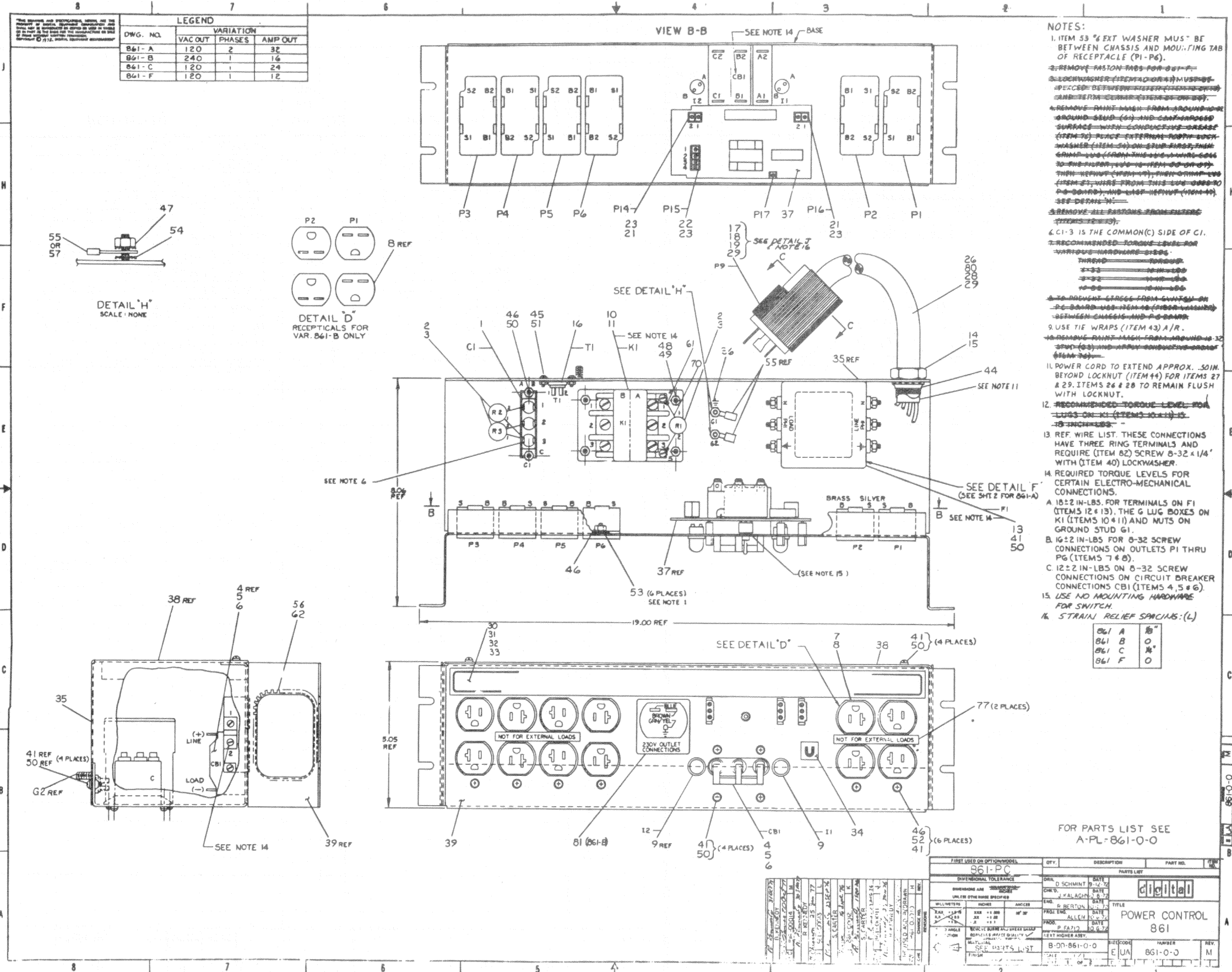
The material herein is for information purposes only and is subject to change without notice. Digital Equipment Corporation assumes no responsibility for any errors which may appear herein.

These drawings and specifications herein are the property of Digital Equipment Corporation and shall not be reproduced or copied or used in whole or in part as the basis for the manufacture or sale of items without written permission.

Copyright © 1975, Digital Equipment Corporation



TITLE	SHEET 2 OF 3	SIZE CODE	NUMBER	REV
POWER CONTROL		B DD	861-0	M



DWG. NO.	LEGEND		
	VAC OUT	PHASES	AMP OUT
B61-A	120	2	32
B61-B	240	1	16
B61-C	120	1	24
B61-F	120	1	12

- NOTES:**
- ITEM 53 "6 EXT WASHER MUST BE BETWEEN CHASSIS AND MOUNTING TAB OF RECEPTACLE (P1-P6).
 - REMOVE FASTON TABS FOR 0-32 SCREW CONNECTIONS.
 - REMOVE WASHER FROM 0-32 SCREW CONNECTIONS.
 - REMOVE PAINT FROM MOUNTING SURFACE AND SURFACE OF RECEPTACLE (P1-P6) WITH CONTACT BRASS (ITEM 3) PLATE EXTERNAL FROM WASHER (ITEM 54) ON SURFACE FROM GRASS (FROM THIS VIEWING SIDE TO THE LEFT) TO REMAIN FLUSH WITH THE SURFACE FROM THIS VIEWING SIDE TO THE RIGHT (ITEM 44). SEE DETAIL H.
 - REMOVE ALL FASTON FROM FASTON (ITEM 3).
 - C1-3 IS THE COMMON (C) SIDE OF C1.
 - RECOMMENDED TORQUE LEVEL FOR LUGS ON KI (ITEMS 10 & 11) IS 15 INCH-POUNDS.
 - REQUIRE TORQUE LEVELS FOR CERTAIN ELECTRO-MECHANICAL CONNECTIONS.
 - A. 15 ± 2 IN-LBS. FOR TERMINALS ON F1 (ITEMS 12 & 13), THE G LUG BOXES ON KI (ITEMS 10 & 11) AND NUTS ON GROUND STUD G1.
 - B. 16 ± 2 IN-LBS FOR 0-32 SCREW CONNECTIONS ON OUTLETS P1 THRU P6 (ITEMS 7 & 8).
 - C. 12 ± 2 IN-LBS ON 0-32 SCREW CONNECTIONS ON CIRCUIT BREAKER CONNECTIONS CBI (ITEMS 4, 5 & 6).
 - USE NO MOUNTING HARDWARE FOR SWITCH.
 - STRAIN RELIEF SPACIALS: (L)

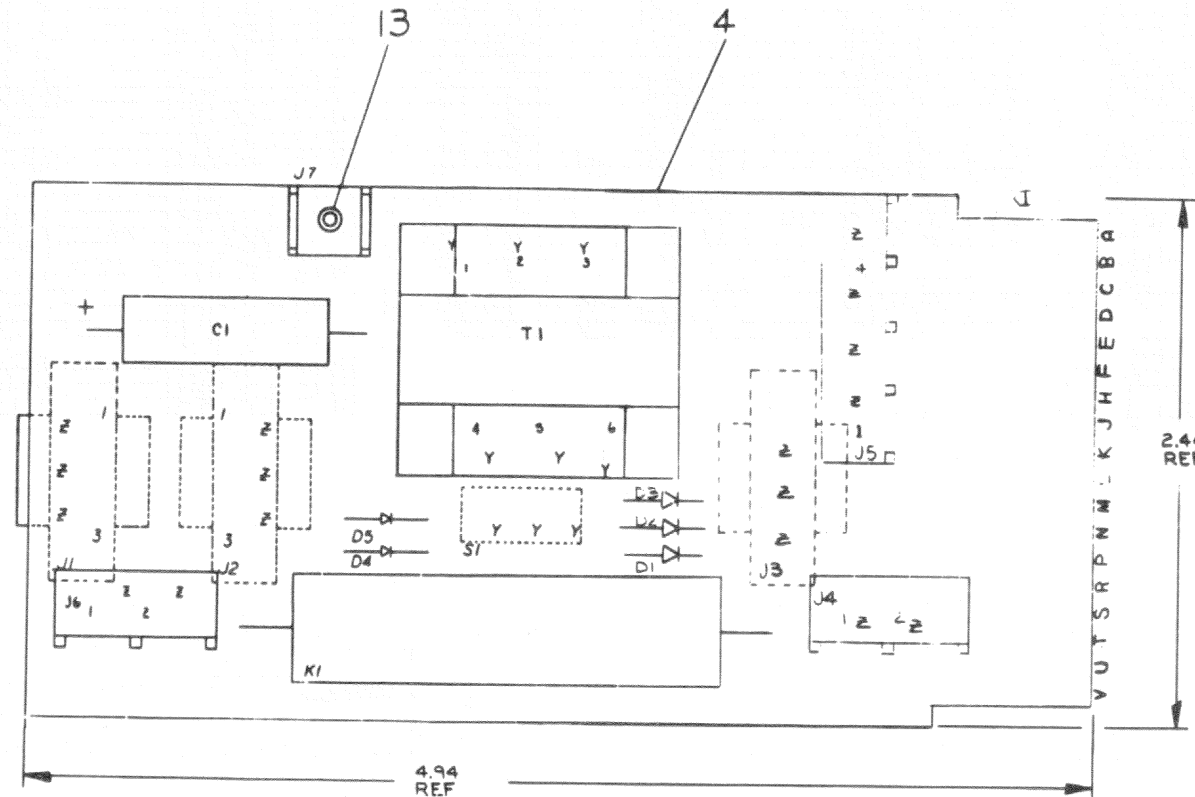
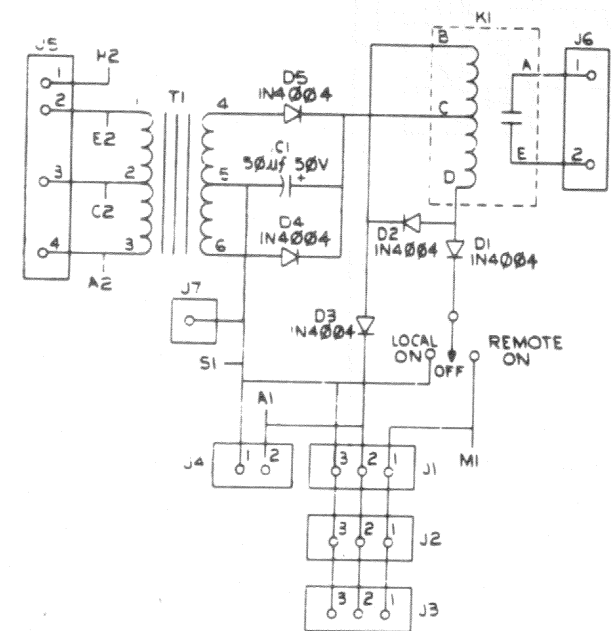
B61 A	18"
B61 B	0"
B61 C	18"
B61 F	0"

FIRST USED ON OPTION/NO.		QTY.	DESCRIPTION	PART NO.	REV.
861-PC					
PARTS LIST					
DIMENSIONAL TOLERANCE		DATE			
DIMENSIONS ARE IN INCHES UNLESS OTHERWISE SPECIFIED		DWN. D. SCHMIDT 8/1/72			
MILLIMETERS ARE IN MILLIMETERS UNLESS OTHERWISE SPECIFIED		ENR. W. MALACHUK 8/1/72			
TOLERANCE		DATE			
±.000	±.005	PROJ. ENR. BELTON 8/1/72			
±.010	±.020	DRA. ALLEN 8/1/72			
±.030	±.050	DATE			
±.075	±.150	P. PAPIO 8/1/72			
±.300	±.600	DATE			
SEE PARTS LIST		REV. 1			
DATE		REV. 2		REV. 3	
REV. 1		REV. 2		REV. 3	

FOR PARTS LIST SEE A-PL-861-0-0

ALL DRAWINGS AND SPECIFICATIONS HEREIN ARE THE PROPERTY OF DIGITAL EQUIPMENT CORPORATION AND SHALL NOT BE REPRODUCED OR COPIED IN WHOLE OR IN PART WITHOUT THE WRITTEN PERMISSION OF THE MANUFACTURER.

NOTES:



REF	DESCRIPTION	PART NO.	QTY
REF	X-Y COORDINATE HOLE LOCATION	K-CO-5411522-0-4	1
REF	ASSY/DRILLING HOLE LAYOUT	D-AH-5411522-0-5	2
REF	MODULE ECO HISTORY	B-MM-5411522-0-6	3
	ETCHED CIRCUIT BOARD	5011521	4
1	RELAY, REED, 48 V COIL, 2.5 A CONT.	1212267-00	5
1	TRANSFORMER MMC 5415	1612342-00	6
1	CAP 50 MFD 50V TANT	1000080-00	7
5	DIODE IN4004	1105796-00	8
1	SWITCH	1211180-00	9
3	HOUSING, SOCKET	1209350-03	10
1	CONN, UNIVERSAL, 4 PIN HEADER	1212297-01	11
2	CONN, UNIVERSAL, 2 PIN HEADER	1212297-00	12
1	EYELET	9006732-00	13
9	TERMINAL, SOCKET CONTACT	1209456-01	14
1	TERMINAL, SOLDERLESS	9007113-00	15

IC TYPE	GND	+5V

IC PIN LOCATIONS

GND AND 5V ARE USUALLY PIN 7 AND 14 RESPECTIVELY. EXCEPTIONS ARE STATED ABOVE.

FIRST USED ON OPTION MODEL
861-D / 861-E

DEC NO.	EIA NO.	DEC NO.	EIA NO.

REVISIONS

DATE: 2/4/75
BY: D.F. ROSS
DATE: 3/8/75
DATE: 3/27/75

digital EQUIPMENT CORPORATION
WATUARD MASSACHUSETTS

TITLE: PILOT CONTROL

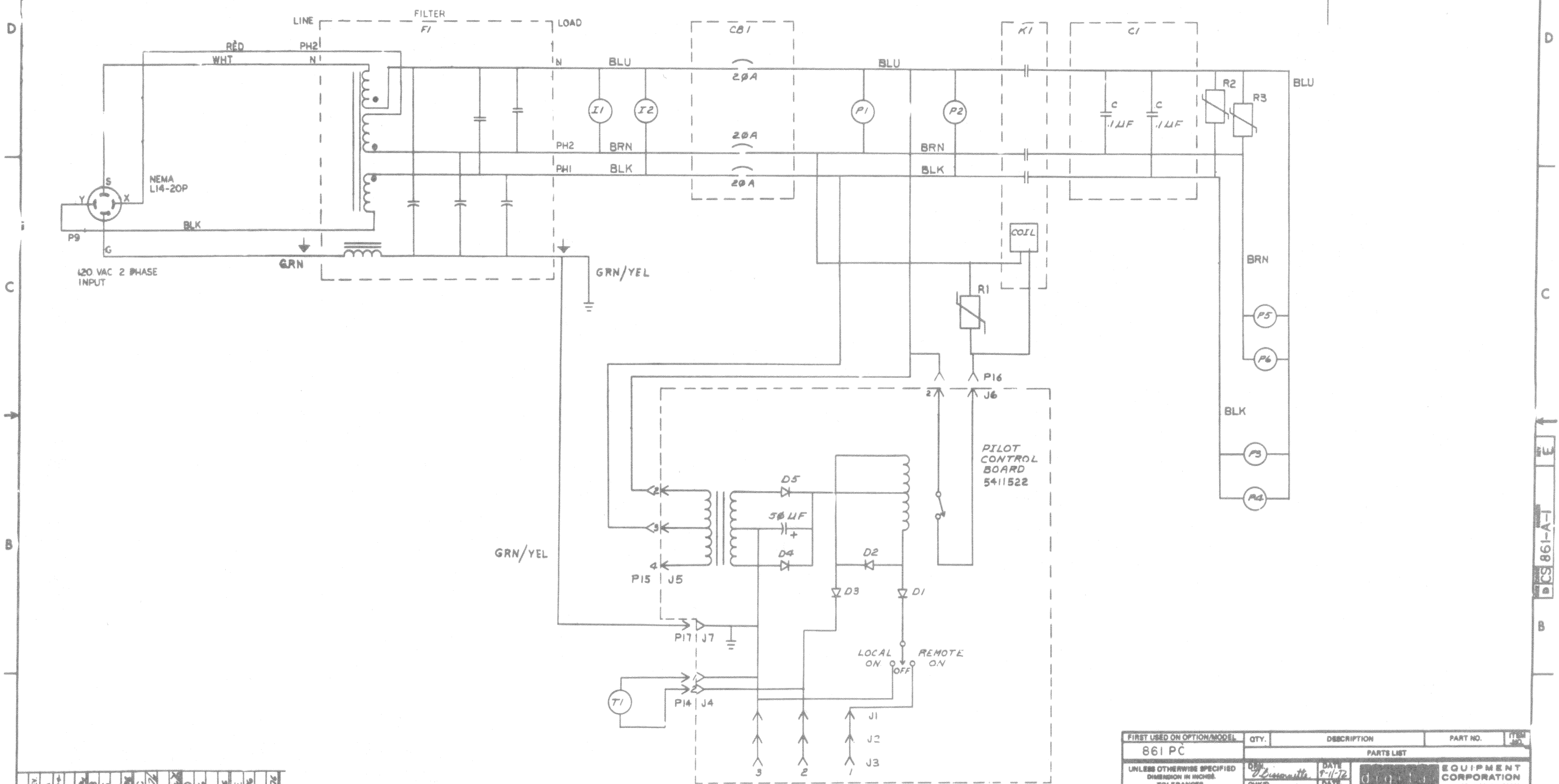
NUMBER: E-UA-861-D-0
D.C.S. 5411522-0-1

SCALE: NONE
SHEET: 1 OF 1

This drawing and specifications herein are the property of Digital Equipment Corporation and shall not be reproduced or copied or used in whole or in part of the basis for the manufacture or sale of items without written permission.

1-V-98 CS 2

NOTE:
1. R1, P2, + R3 ARE MOV VARISTOR SPIKE SUPPRESSORS.

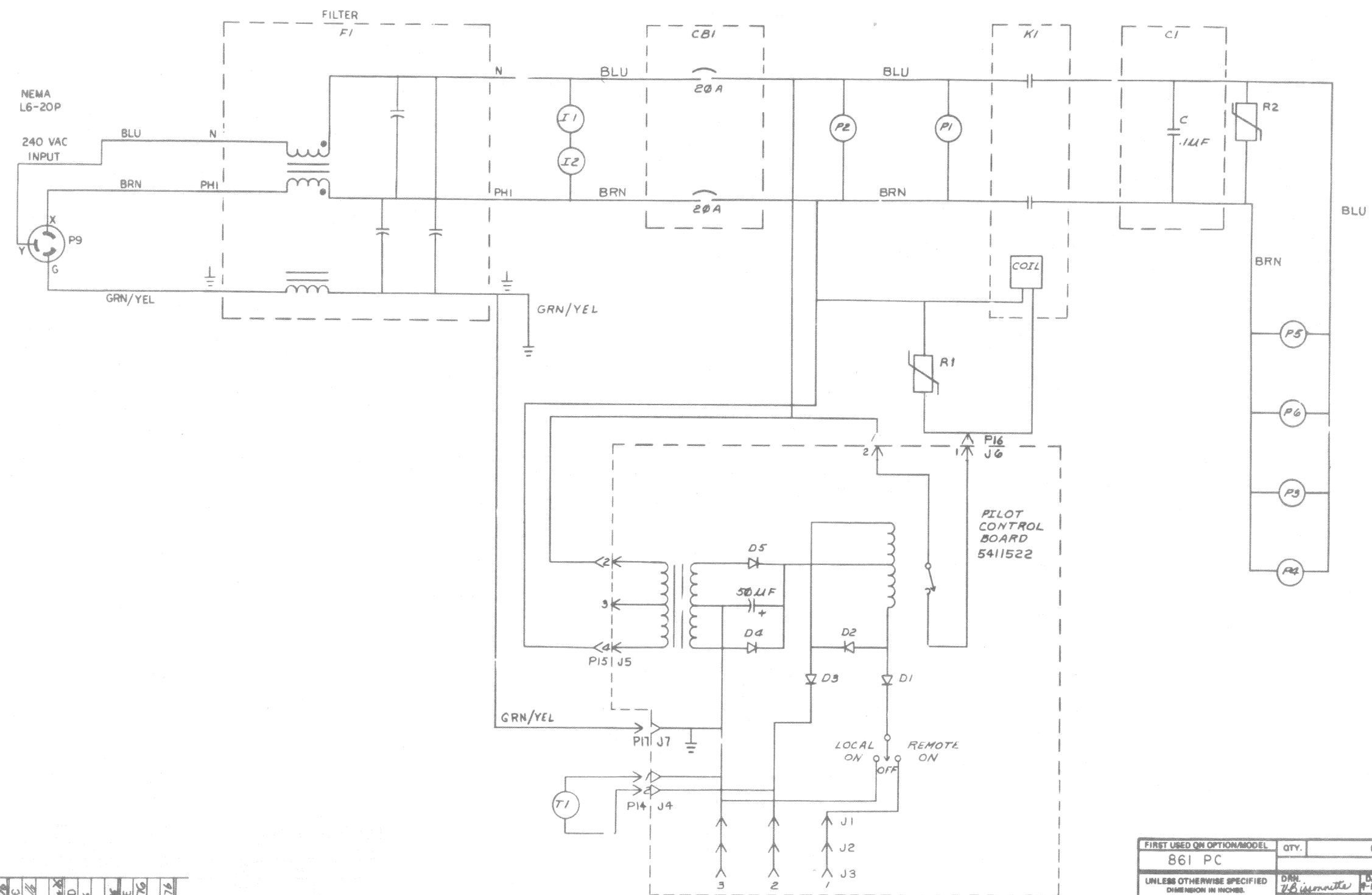


REV	DATE	BY	CHK	DESCRIPTION
1	12-18-72	R. KENNEDY		INITIAL
2	12-18-72	R. KENNEDY		REVISED
3	12-18-72	R. KENNEDY		REVISED
4	12-18-72	R. KENNEDY		REVISED
5	12-18-72	R. KENNEDY		REVISED
6	12-18-72	R. KENNEDY		REVISED
7	12-18-72	R. KENNEDY		REVISED
8	12-18-72	R. KENNEDY		REVISED
9	12-18-72	R. KENNEDY		REVISED
10	12-18-72	R. KENNEDY		REVISED
11	12-18-72	R. KENNEDY		REVISED
12	12-18-72	R. KENNEDY		REVISED
13	12-18-72	R. KENNEDY		REVISED
14	12-18-72	R. KENNEDY		REVISED
15	12-18-72	R. KENNEDY		REVISED
16	12-18-72	R. KENNEDY		REVISED
17	12-18-72	R. KENNEDY		REVISED
18	12-18-72	R. KENNEDY		REVISED
19	12-18-72	R. KENNEDY		REVISED
20	12-18-72	R. KENNEDY		REVISED

FIRST USED ON OPTION/MODEL	QTY.	DESCRIPTION	PART NO.	ITEM NO.
861 PC				
PARTS LIST				
UNLESS OTHERWISE SPECIFIED DIMENSION IN INCHES.		EQUIPMENT CORPORATION		
TOLERANCES		DATE		
DECIMALS	ANGLES	DATE		
.XXX - .000	±0° 30'	DATE		
.XX - .00		DATE		
.X - .0		DATE		
REMOVE BURRS AND BREAK SHARP CORNERS SURFACE QUALITY				
MATERIAL		NEXT HIGHER ASSY.		
FINISH		SCALE		
		SHEET		
		OF		
		DST.		
		DCS 861-A-1		
		NUMBER		
		REV		
		E		

This drawing and specifications, herein, are the property of Digital Equipment Corporation and shall not be reproduced or copied in whole or in part as the basis for the manufacture or sale of items without written permission.

NOTE :
1. R1+R2 ARE MOV VARISTOR
SFIKE SUPPRESSORS.

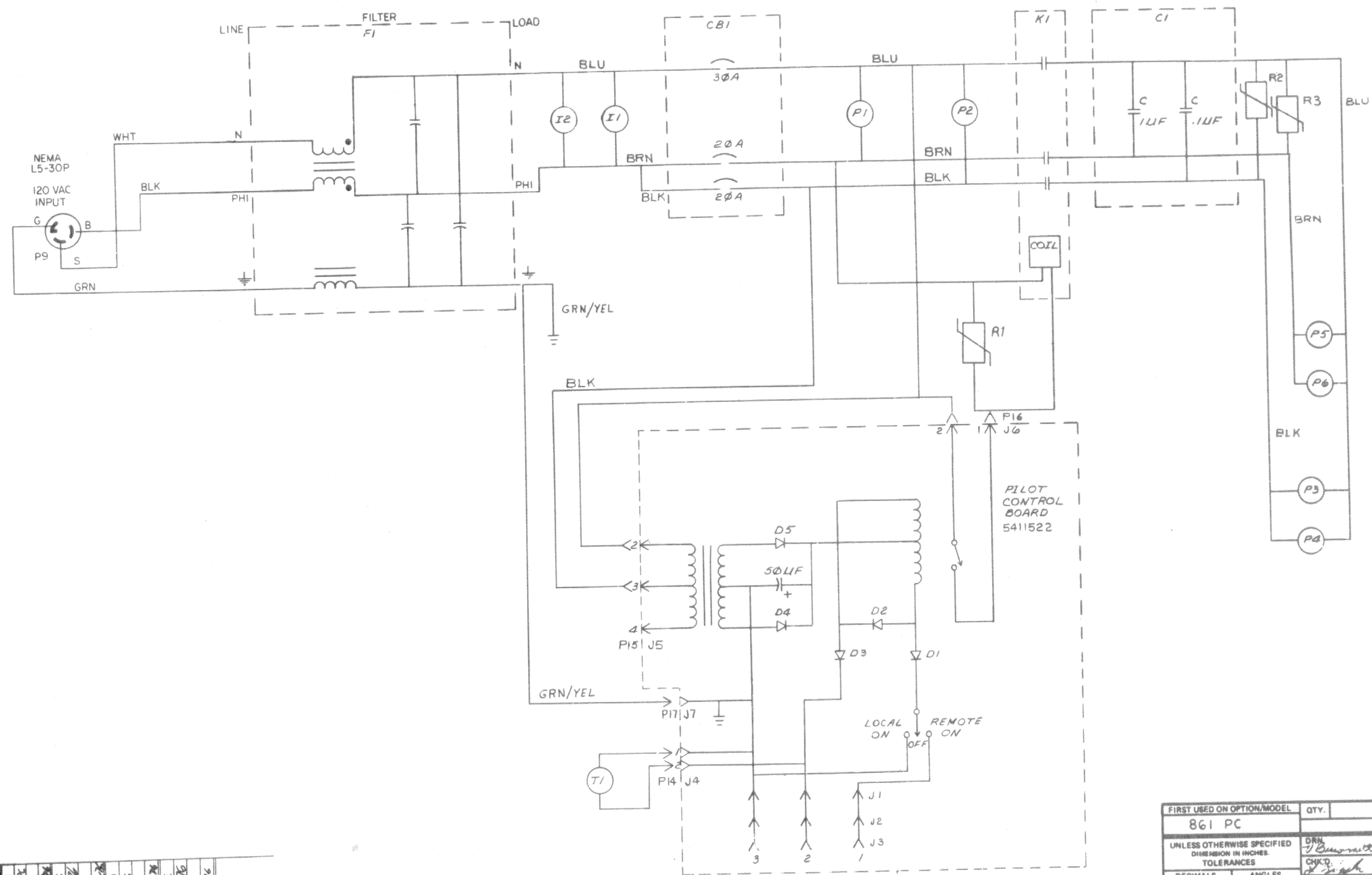


REV	CHANGE NO	REV	DATE
1	861-00006	A	12-74-74
2		B	12-74-74
3		C	12-74-74
4		D	12-74-74
5		E	12-74-74
6		F	12-74-74
7		G	12-74-74
8		H	12-74-74
9		I	12-74-74
10		J	12-74-74
11		K	12-74-74
12		L	12-74-74
13		M	12-74-74
14		N	12-74-74
15		O	12-74-74
16		P	12-74-74
17		Q	12-74-74
18		R	12-74-74
19		S	12-74-74
20		T	12-74-74

FIRST USED ON OPTION/MODEL	QTY.	DESCRIPTION	PART NO.	ITEM NO.
861 PC				
PARTS LIST				
UNLESS OTHERWISE SPECIFIED DIMENSIONS IN INCHES		DATE	DIGITAL EQUIPMENT CORPORATION MAYFORD, MASSACHUSETTS	
TOLERANCES		DATE	TITLE	
DECIMALS	ANGLES	DATE	CIRCUIT SCHEMATIC (861-B-PC)	
.XXX - .005	30°-20'	DATE	SIZE CODE	
.XX - .02		DATE	NUMBER	
.X - .1		DATE	REV.	
REMOVE BURRS AND BREAK SHARP CORNERS SURFACE QUALITY		DATE	DIST.	
MATERIAL		DATE	REV.	
NEXT HIGHER ASSY.		DATE	REV.	
B-DD-861-0		DATE	REV.	
FINISH		DATE	REV.	
SCALE		DATE	REV.	
SHEET OF		DATE	REV.	
DIST.		DATE	REV.	

This drawing and specifications, herein, are the property of Digital Equipment Corporation and shall not be reproduced or copied in whole or in part as the basis for the manufacture or sale of items without written permission.

NOTE:
1. R1, R2 + R3 ARE MOV VARISTOR SPIKE SUPPRESSORS.



REV	CHANGE NO	DATE	BY
A	861-00008	12-10-76	R. KENNEDY
B	861-00009	1-15-77	R. KENNEDY
C	861-00010	2-10-77	R. KENNEDY
D	861-00011	12-28-76	R. KENNEDY
E	861-00012	1-5-77	R. KENNEDY
			S. CARTER
			D. CHANON
			R. KENNEDY

FIRST USED ON OPTION/MODEL	QTY.	DESCRIPTION	PART NO.	ITEM NO.
861 PC				
UNLESS OTHERWISE SPECIFIED DIMENSION IN INCHES. TOLERANCES				
DECIMALS	ANGLES	TITLE		
.XXX + .005	± 0° 30'	CIRCUIT SCHEMATIC		
.XX + .02		861-C PC		
X + .1		PARTS LIST		
REMOVE BURRS AND BREAK SHARP CORNERS SURFACE QUALITY				
MATERIAL				
NEXT HIGHER ASSY.				
FINISH				
SCALE		SIZE CODE	NUMBER	REV.
SHEET OF		DCS	861-C-1	E

This drawing and specifications, herein, are the property of Digital Equipment Corporation and shall not be reproduced or copied or used in whole or in part as the basis for the manufacture or sale of items without written permission.

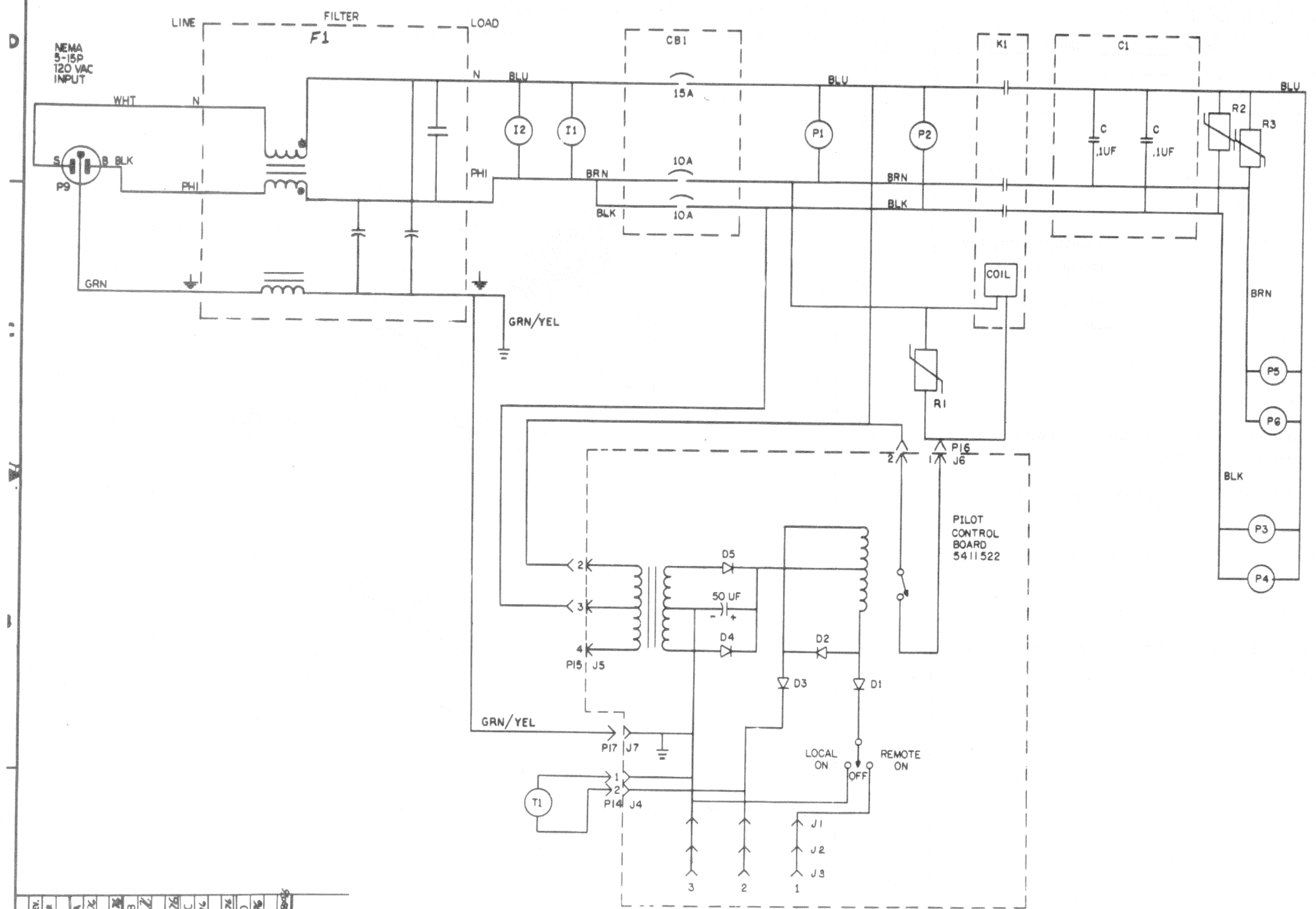
DIGITAL EQUIPMENT CORPORATION MAYNARD MASSACHUSETTS				
PACKAGING INSTRUCTION			REV: <u>A</u>	DATE: <u>4-73</u>
TITLE			_____	_____
TITLE			_____	_____
MATERIAL REQUIREMENTS				
Quantity	Identification No.	Purchase Spec	Description	
1	7-2008 1314 0500-0	9905229	Full overlap carton	
2		9905228	Expanded polystyrene foam insert	
A/R			3-inch wide Glasflex tape	
PACKAGING INSTRUCTIONS				
Step	Procedure			
1	Set up the full over lap carton (9905229) using one strip of tape across the bottom and extending up the sides approximately three inches. See Figure 1.			
2	Place one expanded polystyrene foam insert (9905228) in each end of the carton with the slots in the foam facing inward.			
3	Place the 861 power control in the carton with the ears of the upright sliding into the slots in the foam.			
4	Coil the power cord so that it fits into the cavity in the rear of the power control.			
5	Close and seal the carton with one piece of tape across the top of the carton and extending down the sides approximately three inches.			
ENG	APPD	SIZE <u>A</u>	CODE PI	NUMBER 3700083-0-0
				REV <u>A</u>

PACKAGING INSTRUCTION				REV: <u>A</u>	DATE: <u>4/73</u>
TITLE				_____	_____
TITLE				_____	_____
861 POWER CONTROL , INTERPLANT PACKAGE					
FIGURE 1					
<p>NOTE Make changes to the "C" size original only and rephotograph.</p>					
ENG.	APPD.	SIZE <u>A</u>	CODE PI	NUMBER 3700083-0-0	REV <u>A</u>

This drawing and specifications, herein, are the property of Digital Equipment Corporation and shall not be reproduced or copied or used in whole or in part as the basis for the manufacture or sale of items without written permission.

THE DRAWING AND SPECIFICATIONS HEREIN ARE THE PROPERTY OF DIGITAL EQUIPMENT CORPORATION AND SHALL NOT BE REPRODUCED OR COPIED OR USED IN WHOLE OR IN PART AS THE BASIS FOR THE MANUFACTURE OR SALE OF ITEMS WITHOUT WRITTEN PERMISSION. COPYRIGHT © 1979, DIGITAL EQUIPMENT CORPORATION.

NOTE:
R1 R2 + R3 ARE MOV VARISTOR SPIKE SURPRESSORS.



REV.	DATE	BY	CHKD	DESCRIPTION
1	12-19-76	R. KENNEDY		ORIGINAL
2	1-16-77	R. KENNEDY		REVISION
3	1-16-77	R. KENNEDY		REVISION
4	1-16-77	R. KENNEDY		REVISION
5	1-16-77	R. KENNEDY		REVISION
6	1-16-77	R. KENNEDY		REVISION
7	1-16-77	R. KENNEDY		REVISION
8	1-16-77	R. KENNEDY		REVISION

THIRD ANGLE PROJECTION REMOVE BURRS AND BREAK SHARP CORNERS DO NOT SCALE DWG MATERIAL FINISH	DRN. <i>R. Kennedy</i> 1-20-77	FIRST USED ON 861 P.C.
	CHK'D <i>R. Kennedy</i> 1-20-77	TITLE CIRCUIT SCHEMATIC 861-F P.C.
PROJ. ENG. <i>R. Kennedy</i> 1-20-77	SCALE B-DD-861-0	SIZE CODE D CS
NEXT HIGHER ASSY.	SHEET OF	NUMBER 861-F-1
		REV. D



