

"THE MATERIAL HEREIN IS FOR INFORMATION PURPOSES ONLY AND IS SUBJECT TO CHANGE WITHOUT NOTICE. DIGITAL EQUIPMENT CORPORATION ASSUMES NO RESPONSIBILITY FOR ANY ERRORS WHICH MAY APPEAR HEREIN."

# FIELD MAINTENANCE PRINT SET

"THIS DRAWING AND SPECIFICATIONS, HEREIN, ARE THE PROPERTY OF DIGITAL EQUIPMENT CORPORATION AND SHALL NOT BE REPRODUCED OR COPIED OR USED IN WHOLE OR IN PART AS THE BASIS FOR THE MANUFACTURE OR SALE OF ITEMS WITHOUT WRITTEN PERMISSION. COPYRIGHT © 1981 DIGITAL EQUIPMENT CORPORATION."

## TABLE OF CONTENTS

FIELD MAINTENANCE PRINT SET B-TC-H9544-MG-2  
 BA11-A SLIDE KIT K-PL-H9544-MG-DBP  
 BA11-A SLIDE MOUNTING E-AD-H9544-MG-0  
 DRAWING DIRECTORY BA11-A SLIDE KIT K-DD-H9544-MG-0

UNIT VARIATIONS COVERED BY THIS PRINT SET
H9544-MG

H9544-MG

## Field Maintenance Print Set

Digital Equipment Corporation

MPØ 1265

REV.  
 NUMBER  
 H9544-MG-2  
 SIZE CODE  
 B TC

REVISIONS	REV	USED ON OPTION/MODEL	DRN.	DATE	TITLE:	digital											
	CHG. NO.		CHK'D	DATE							BA11-A	11/44-CA	11/44-CB	SIZE	CODE	NUMBER	REV.
			J. Sullivan	8/20/81	BA11-A SLIDE KIT	B	TC	H9544-MG-2	A								
			J.F. Sullivan	8/20/81		PROJ. ENG.											
			R. Boudreau	8/20/81		FIELD SERV.	DIST.										
		SHEET 1 OF 1	R. Evans	8/20/81													

DRB 124

TW

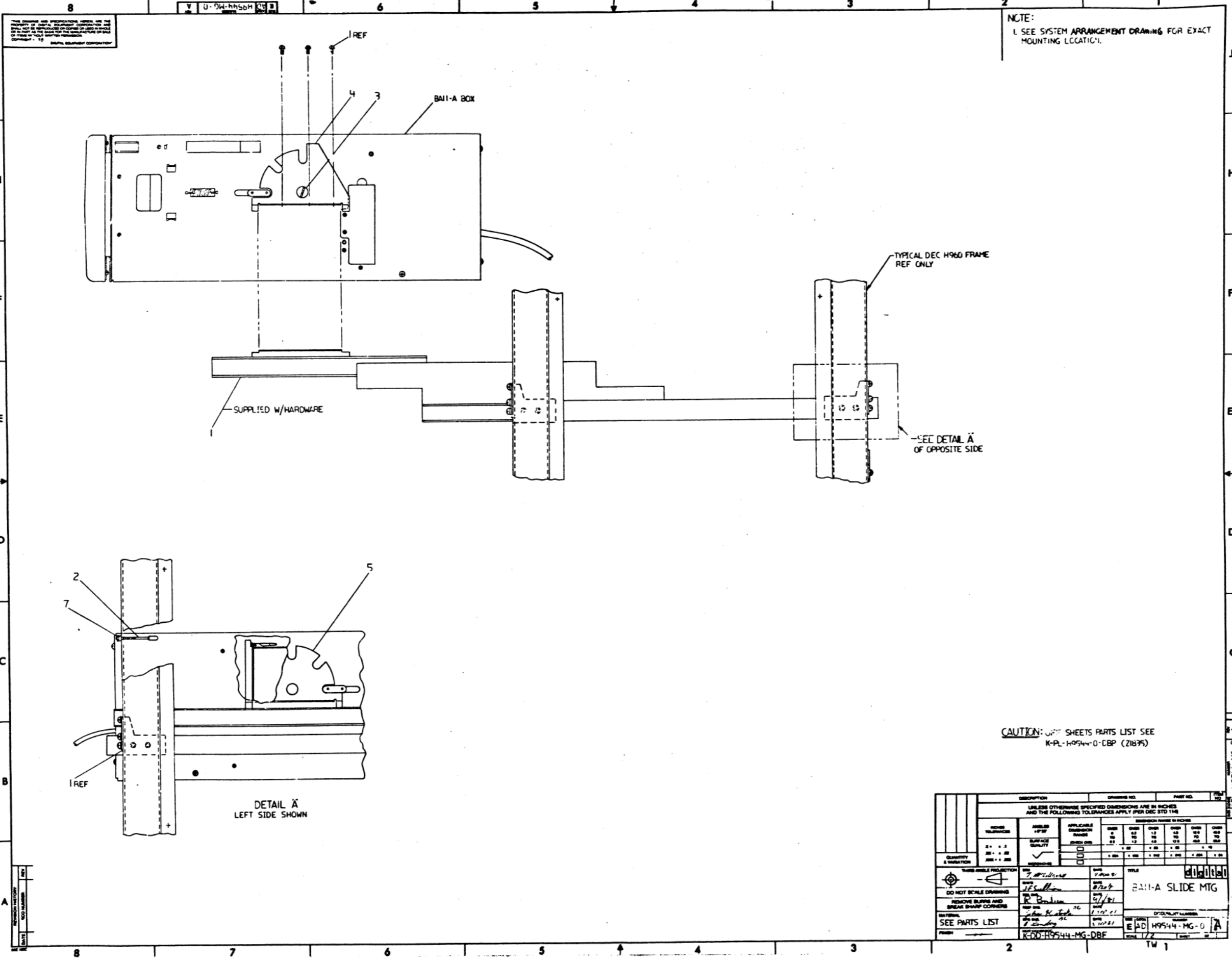
AUTOMATED BY PRTLST.3P(44)

PARTS LIST

SHEET A1 OF A1

LINE	ITEM	DOCUMENT NUMBER	PART NUMBER	DESCRIPTION	QUANTITY PER VARIATION	MG
1	1	E-PS-1216971-0-0	1216971-00	CHASSIS SLIDE FOR BALL-A	1	
2	2	C-MD-7413659-0-0	7413659-00	BRACKET SHIPPING	1	
3	3	B-PS-1216197-0-0	1216197-00	SCREW, PIVOT	2	
4	4	D-MD-7421613-0-0	7421613-00	SLICE INDEX PLATES	1	
5	5	D-MD-7421613-0-0	7421613-01	SLIDE INDEX PLATE	1	
6	6	A-SP-3700471-0-0	3700471-00	PKG KIT OPTION SLIDES, H9544-MF	1	
7	7		9006565-00	NUT, KEP 10-32X 3/8 AF	1	

REVISION HISTORY		BASIC PART NO: H9544		DRN: F. J. RILEY		DATE: 29-OCT-80		D I G I T A L	
ENG	ECO NUMBER	REV	SECTION A OF A	CHK'D:	R. J. RILEY	DATE:	29-OCT-80	TITLE	PARTS LIST
	INITIAL	A	SECTION, VARIATION INDEX					BALL-A SLIDE KIT	
			(A) MG	DES. ENG.:	R. BOLDREAU	DATE:	29-OCT-90	DOCUMENT NUMBER	
			(B)	RESP. ENG.:	J. KRATOSKA	DATE:	29-OCT-90	SIZE	CODE
			(C)	MFG. ENG.:	B. GINSBERG	DATE:	20-JUL-81	K	PL
			(D)	ASSEMBLY NUMBER:	E-AD-H9544-MG-0	TOP DOCUMENT NUMBER:	B-TC-H9544-MG-2	NUMBER	REV
			(E)			FILE NAME:	Z1835.PLS		EDIT #
			(F)						2
<p>"THIS DRAWING AND SPECIFICATIONS HEREIN, ARE THE PROPERTY OF DIGITAL EQUIPMENT CORPORATION AND SHALL NOT BE REPRODUCED OR COPIED OR USED IN WHOLE OR IN PART AS THE BASIS FOR THE MANUFACTURE OR SALE OF ITEMS WITHOUT WRITTEN PERMISSION. COPYRIGHT (C) 1991. DIGITAL EQUIPMENT CORPORATION"</p>									



THIS DRAWING AND SPECIFICATIONS HEREBY ARE THE PROPERTY OF THE U.S. GOVERNMENT AND SHALL NOT BE REPRODUCED OR TRANSMITTED IN ANY FORM OR BY ANY MEANS, ELECTRONIC OR MECHANICAL, INCLUDING PHOTOCOPYING, RECORDING, OR BY ANY INFORMATION STORAGE AND RETRIEVAL SYSTEM.

NOTE:  
1. SEE SYSTEM ARRANGEMENT DRAWING FOR EXACT MOUNTING LOCATION.

CAUTION: SEE SHEETS PARTS LIST SEE K-PL-H9544-0-CBP (21895)

DESCRIPTION		DRAWING NO.	PART NO.	REV.
UNLESS OTHERWISE SPECIFIED DIMENSIONS ARE IN INCHES AND THE FOLLOWING TOLERANCES APPLY (PER DEC STD 118)				
DIMENSION RANGE IN INCHES	OVER 0 TO 1/8	±0.005	OVER 1/8 TO 1/4	±0.005
	OVER 1/4 TO 3/8	±0.005	OVER 3/8 TO 1/2	±0.005
DIMENSION RANGE IN INCHES	OVER 1/2 TO 3/4	±0.005	OVER 3/4 TO 1	±0.005
	OVER 1 TO 2	±0.005	OVER 2 TO 3	±0.005
DIMENSION RANGE IN INCHES	OVER 3 TO 4	±0.005	OVER 4 TO 6	±0.005
	OVER 6 TO 12	±0.005	OVER 12 TO 24	±0.005
APPLICABLE SURFACE FINISH	AS MANUFACTURED			
APPLICABLE SURFACE QUALITY	AS MANUFACTURED			
QUANTITY & VARIATION	AS SHOWN			
THIRD ANGLE PROJECTION	AS SHOWN			
DO NOT SCALE DRAWING	AS SHOWN			
REMOVE BURRS AND BREAK SHARP CORNERS	AS SHOWN			
MATERIAL	SEE PARTS LIST			
FINISH	SEE PARTS LIST			
DRAWN BY: <i>[Signature]</i>		DATE: 1/17/61	TITLE: BANI-A SLIDE MTG	
CHECKED BY: <i>[Signature]</i>		DATE: 1/17/61	DISTRIBUTION NUMBER: EAD H9544-MG-0	
APPROVED BY: <i>[Signature]</i>		DATE: 1/17/61	SCALE: 1/1	
PARTS LIST: K-PL-H9544-MG-DBF		DRAWN BY: TW 1		

"The material herein is for information purposes only and is subject to change without notice. Digital Equipment Corporation assumes no responsibility for any errors which may appear herein."

DRAWING DIRECTORY

"This drawing and specifications, herein, are the property of Digital Equipment Corporation and shall not be reproduced or copied or used in whole or in part as the basis for the manufacture or sale of items without written permission.  
Copyright (C) 1980 Digital Equipment Corporation"

FOR FIELD MAINTAINCE PRINT SET REFER TO B-TC-H9544-MG-2

UNIT VARIATIONS	
VAR	TITLE
H9544-MG	BA11-A SLIDE KIT

Revision History			Used on Option/Model	Responsible Eng.	DIGITAL			
Eng	ECO Number	REV	BA11-A	Date :	TITLE			
---	INITIAL	A		18 AUGUST 81	DRAWING DIRECTORY			
				18 AUGUST 81	BA11-A SLIDE KIT			
				18 AUGUST 81				
				18 AUGUST 81	SIZE	CODE	DOCUMENT NUMBER	REV.
				18 AUGUST 81	K	DD	H9544-MG-0	A
				18 AUGUST 81	Sheet 1 of 2			Edit # 0001

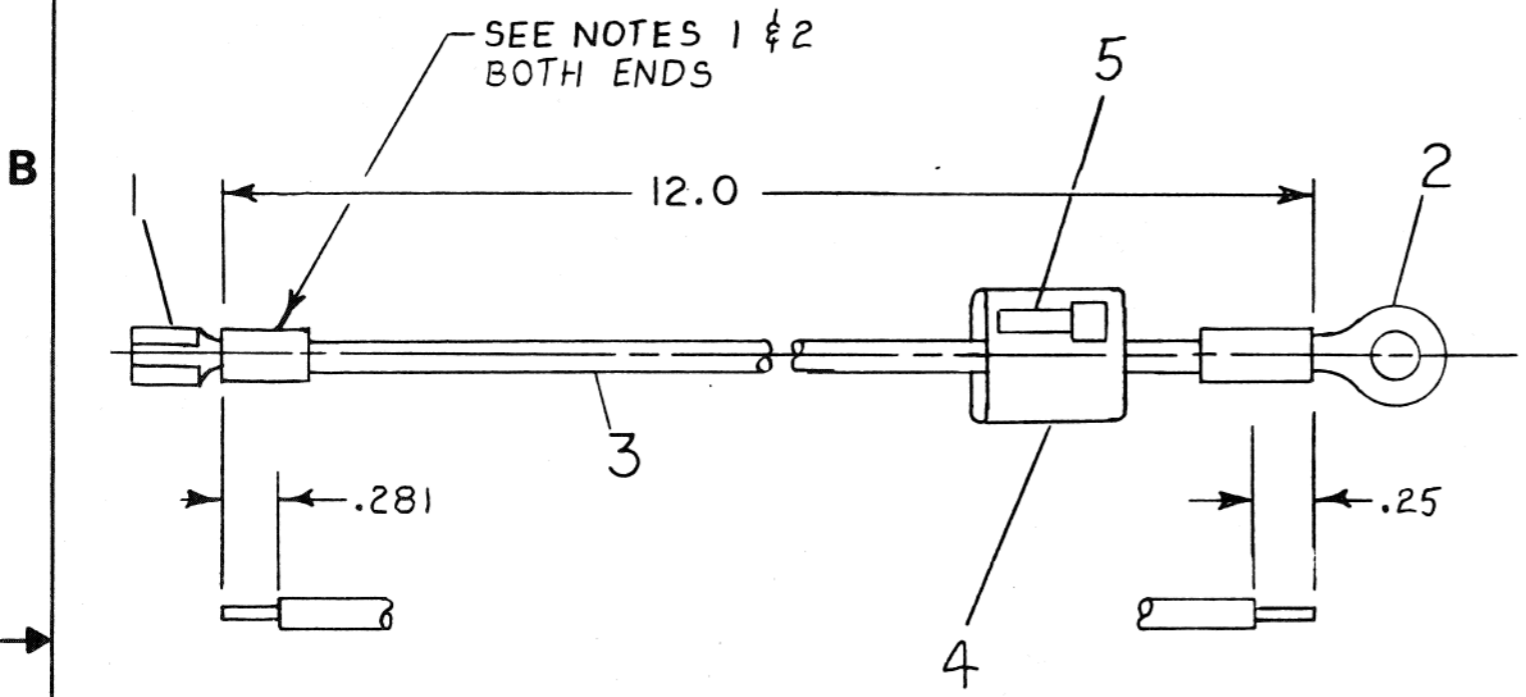
F I N D	# DRAWING NUMBER	DESCRIPTION	T Y P E	F I N D	# DRAWING NUMBER	DESCRIPTION	T Y P E
	1.	MP01265 BA11-A SLIDE KIT (MP)	-				
		B-TC-H9544-MG-2 BA11-A SLIDE KIT (TC)	-				
		E-AD-H9544-MG-0 BA11-A SLIDE MTG	M				
		K-PL-H9544-MG-DBP BA11-A SLIDE KIT (KPL)	M				
		E-PS-1216971-0-0 CHASSIS SLIDE FOR BA11-A	M				
		C-MD-7413659-0-0 BRACKET SHIPPING	M				
		B-PS-1216197-0-0 SCREW, PIVOT	M				
		D-MD-7412613-0-0 SLIDE INDEX PLATE	M				
		A-SP-3700471-0-0 INSTR PKG SLIDES 1144-CA, CB	M				

Type: E Electrical	D   I   G   I   T   A   L	TITLE	DRAWING DIRECTORY	SIZE	CODE	DOCUMENT NUMBER	REV.
M Mechanical		BA11-A SLIDE KIT	K	DD	H9544-MG-0	A	
E/M Electro/Mechanical				Sheet 2 of 2		Edit # 0001	

THIS DRAWING AND SPECIFICATIONS, HEREIN, ARE THE PROPERTY OF DIGITAL EQUIPMENT CORPORATION AND SHALL NOT BE REPRODUCED OR COPIED OR USED IN WHOLE OR IN PART AS THE BASIS FOR THE MANUFACTURE OR SALE OF ITEMS WITHOUT WRITTEN PERMISSION.  
 COPYRIGHT © 1978 DIGITAL EQUIPMENT CORPORATION

REV. 0-0-0-0  
 NUMBER 7422393-0-0  
 CODE B IA  
 SIZE 2  
 1

- NOTES:
1. CRIMP PER DEC. STD. 116 SEC 3 REV B PAGE 6
  2. PULL TEST, PER DEC. STD A-SP-7665267 REV B, AFTER CRIMP



1	TIE, CABLE SSTI-M	9007031-00	5
1	LABEL, CABLE I.D.	9009532-00	4
12	WIRE #20AWG STRD GRN	9107460-55	3
1	RING TERM #8 STUD	1214628-00	2
1	FASTON TERM	9007970-00	1

DESCRIPTION	DWG./PART NO.	ITEM NO.
UNLESS OTHERWISE SPECIFIED DIMENSIONS ARE IN INCHES		
ANGLES ±0° 30'	CLASS OF ACCURACY (CHECK ONE)	NOMINAL DIMENSION RANGE INCHES
SURFACE QUALITY IN MICROINCHES	MEDIUM <input type="checkbox"/>	OVER 0 TO 0.3 ±.004 OVER 0.3 TO 1.3 ±.008 OVER 1.3 TO 4.3 ±.012 OVER 4.3 TO 17.5 ±.016 OVER 17.5 TO 40.0 ±.024 OVER 40.0 TO 80.0 ±.04
	PREFERRED <input checked="" type="checkbox"/>	±.012 ±.016 ±.025 ±.04 ±.063 ±0.1

REVISIONS	REV.
CHK	
CHANGE NO.	

THIRD ANGLE PROJECTION

REMOVE BURRS AND BREAK SHARP CORNERS

DO NOT SCALE DWG

MATERIAL SEE PARTS LIST

FINISH H

DRN. *D. Murray* 10-5-78  
 CHK'D. *J. F. Sullivan* 11/17/79  
 ENG. *R. O. H. [unclear]* 1/23/79  
 PROJ. ENG. *R. O. H. [unclear]* 1/23/79  
 PROD. *John Conalle* 2/9/79

FIRST USED ON 11/44

TITLE WIRE ASSY

E-VA-11/44-0-0

SCALE NONE

SHEET 1 OF 1

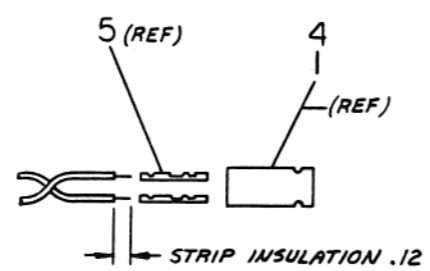
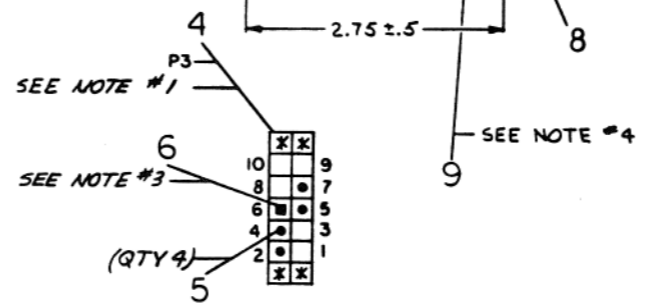
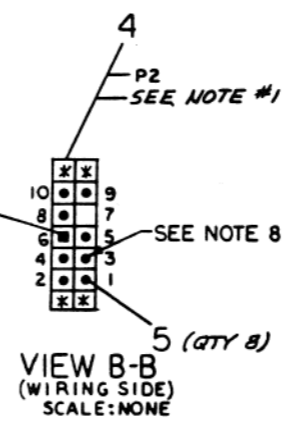
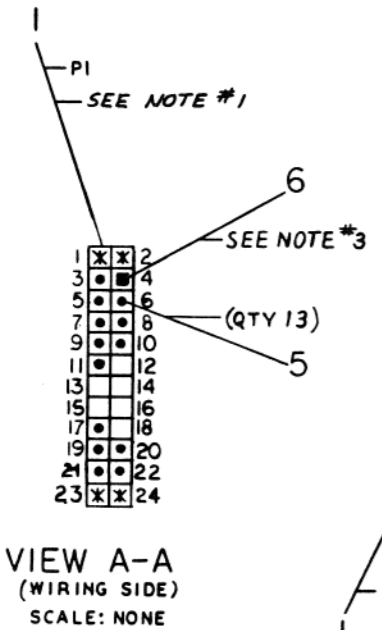
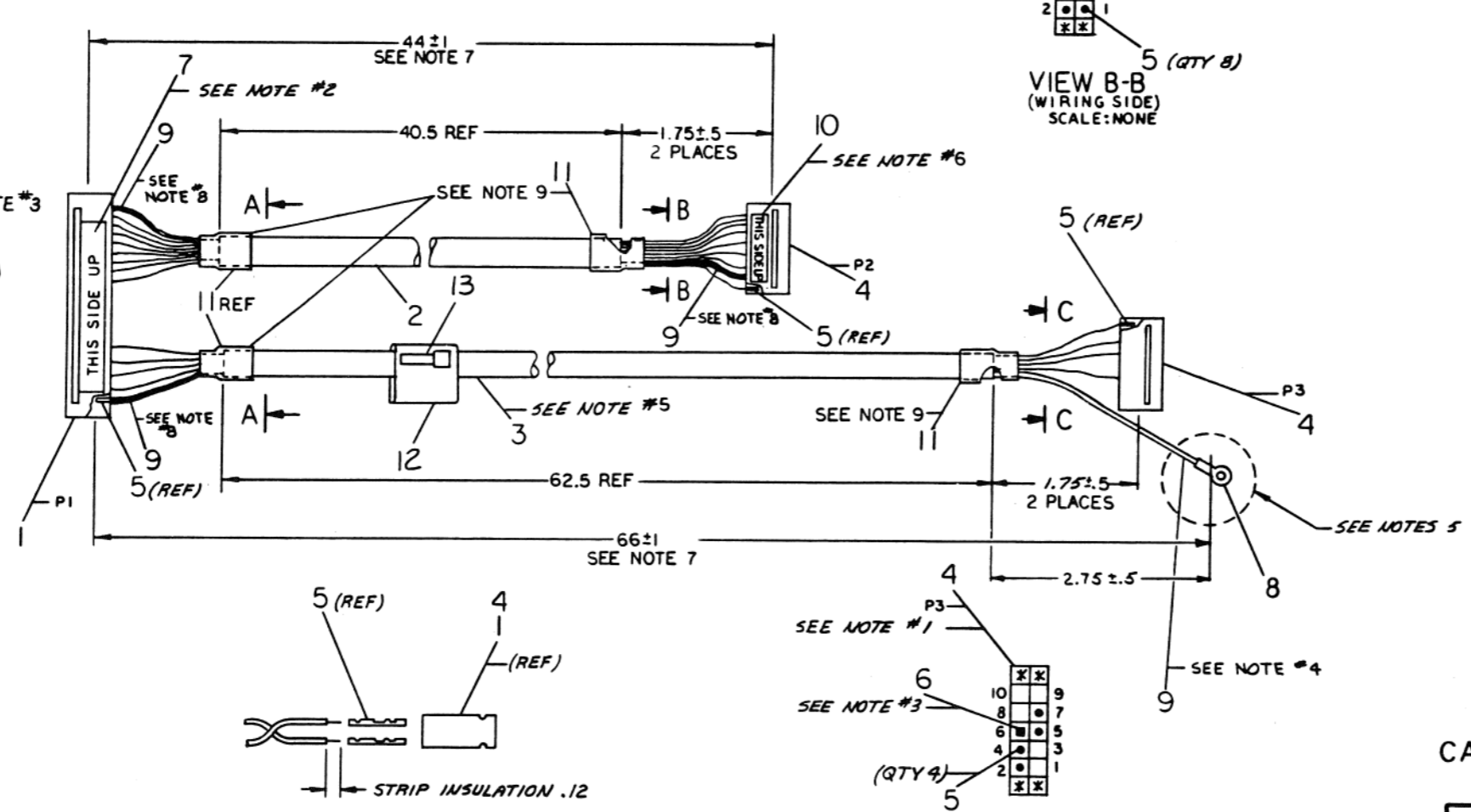
SIZE CODE NUMBER REV.  
 B IA 7422393-0-0 \*

THIS DRAWING AND SPECIFICATIONS, HEREIN, ARE THE PROPERTY OF DIGITAL EQUIPMENT CORPORATION AND SHALL NOT BE REPRODUCED OR COPIED OR USED IN WHOLE OR IN PART AS THE BASIS FOR THE MANUFACTURE OR SALE OF ITEMS WITHOUT WRITTEN PERMISSION. COPYRIGHT © 1993 - DIGITAL EQUIPMENT CORPORATION

WIRE TABLE							
ITEM NO.	AWG	COLOR	FROM		TO		REMARKS
			CONN	WITH	CONN	WITH	
2	24	DRAIN	PI-3	ITEM 5	P2-3	ITEM 5	SEE NOTE 8
2	24	RED	PI-5	ITEM 5	P2-4	ITEM 5	
2	24	WHT	PI-6	ITEM 5	P2-5	ITEM 5	
2	24	GRN	PI-7	ITEM 5	P2-1	ITEM 5	
2	24	BLK	PI-8	ITEM 5	P2-2	ITEM 5	
2	24	BRN	PI-9	ITEM 5	P2-9	ITEM 5	
2	24	ORN	PI-10	ITEM 5	P2-8	ITEM 5	
2	24	BLU	PI-11	ITEM 5	P2-10	ITEM 5	
3	24	BLK	PI-17	ITEM 5	P3-2	ITEM 5	
3	24	GRN	PI-19	ITEM 5	P3-4	ITEM 5	
3	24	WHT	PI-20	ITEM 5	P3-5	ITEM 5	
3	24	RED	PI-21	ITEM 5	P3-7	ITEM 5	
3	24	DRAIN	PI-22	ITEM 5	ITEM 8	ITEM 9	SEE NOTES 4,8

LEGEND	
VARIATION	USED WITH
00	5413671 CONSOLE MODULE
01	5414441 CONSOLE MODULE

- NOTES:**
- LOCATIONS MARKED (X) IN VIEWS A-A, B-B AND C-C ARE NOT TO BE USED.
  - PLACE LABEL (ITEM #7) ON SIDE AS SHOWN FOR VAR: 00 ONLY. FOR VAR: 01, PLACE ON OPPOSITE SIDE OF CONN. P1.
  - FOR VAR: 00 ONLY, CONNS. P1-4, P2-6 (P3-6 (ITEM 4) SHALL HAVE ONE KEY (ITEM 6) INSERTED AS SHOWN. FOR VAR: 01 CONNS. P2-6 (P3-6 (ITEM 4) SHALL HAVE ONE KEY (ITEM 6) INSERTED AS SHOWN.
  - SLIDE EXTRUDED TUBING (ITEM #9) OVER DRAIN WIRE, WHERE IT BREAKS OUT OF CABLE AS REQUIRED.
  - WIRE FROM P1-22 TO ITEM #8 SHALL BE MADE 1 INCH LONGER THAN WIRES FROM P1 TO P3.
  - LOCATE LABEL (ITEM #10) AS SHOWN ON CONNECTOR P2 (ITEM #4)
  - CUT LENGTH
  - SLIDE EXTRUDED TUBING (ITEM 9) OVER DRAIN WIRE BEFORE CRIMPING CONTACTS P2-3, P1-3, P1-22.
  - INSTALL SHRINK TUBING (ITEM #11) APPROX 1 INCH LONG, OVERLAPPING CABLE JACKET
  - CONN P1-19 AND P1-3 (ITEM 1) SHALL HAVE TWO KEYS (ITEM 6) INSERTED AS SHOWN.



VARIATION: 00 ONLY

CAUTION: OFF SHEET PARTS LIST EXISTS SEE K-PL-7016487-0-DBP

REV.	A
CHANGE NO.	7016487-ML 001
BY	F. CERASUSKIS
CHK	J. K. ...

DESCRIPTION	DWG. PART NO.	ITEM NO.
UNLESS OTHERWISE SPECIFIED DIMENSIONS ARE IN INCHES		
ANGLE	CLASS OF ACCURACY	NOMINAL DIMENSION RANGE INCHES
SURFACE	FINISH	0.005
QUALITY	MEDIUM	0.005
MICROMETERS	PREFERRED	0.005
THIRD ANGLE PROJECTION	DRN	FIRST USED ON
REMOVE BURRS AND BREAK SHARP CORNERS	CHK'D	1/44
DO NOT SCALE DWG	ENGR	
MATERIAL	PROJ. ENGR.	
SEE PARTS LIST	SCALE	
FINISH	SHEET	OF 2

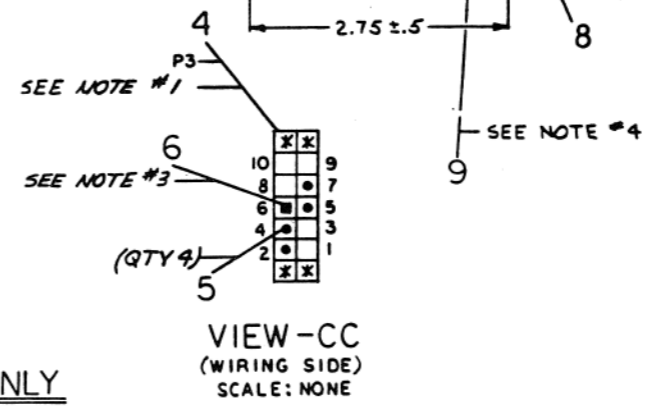
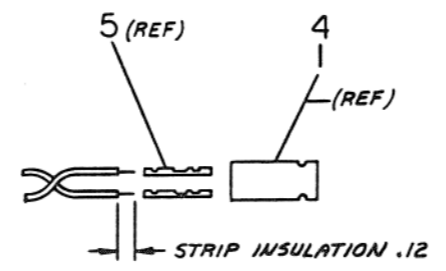
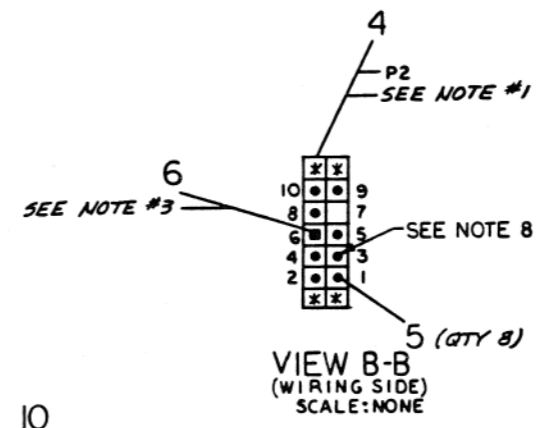
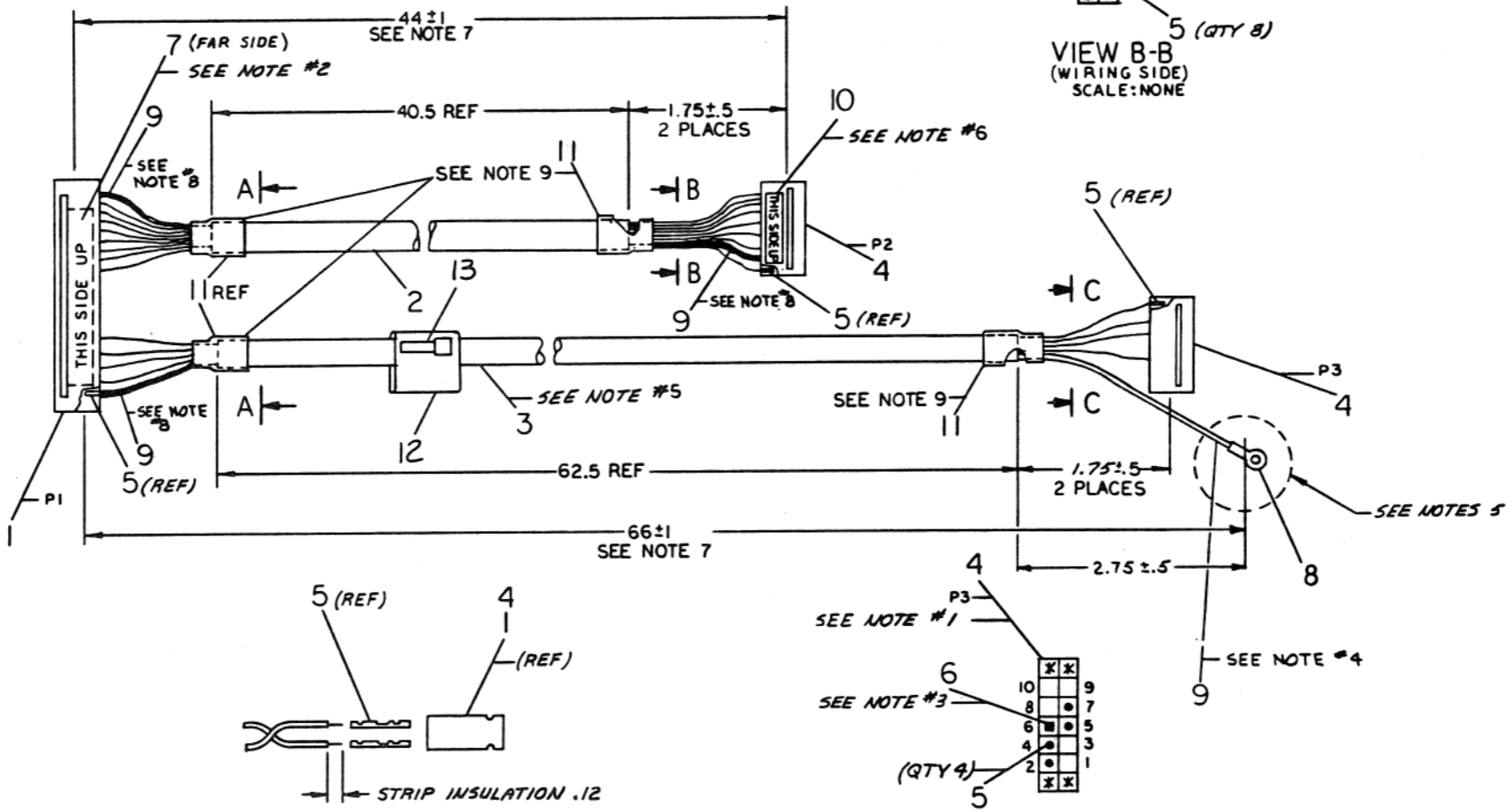
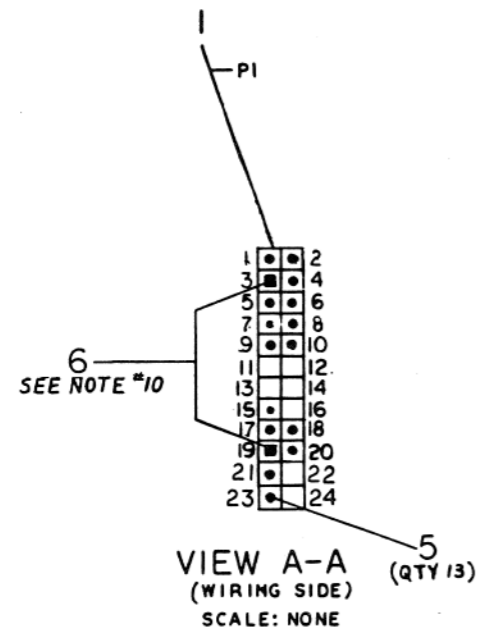
CIM CABLE ASSY

E-UR-1144-0-0  
SCALE 1/1  
SHEET 1 OF 2

DIA 7016487-0-0 A

THIS DRAWING AND SPECIFICATIONS HEREIN ARE THE PROPERTY OF DIGITAL EQUIPMENT CORPORATION AND SHALL NOT BE REPRODUCED OR COPIED OR USED IN WHOLE OR IN PART AS THE BASIS FOR THE MANUFACTURE OR SALE OF ITEMS WITHOUT WRITTEN PERMISSION.  
 COPYRIGHT © 1983 DIGITAL EQUIPMENT CORPORATION

WIRE TABLE							
ITEM NO.	AWG	COLOR	FROM		TO		REMARKS
			CONN	WITH	CONN	WITH	
2	24	DRAIN	P1-6	ITEM 5	P2-3	ITEM 5	SEE NOTE 8
2	24	RED	P1-4	ITEM 5	P2-4	ITEM 5	
2	24	WHT	P1-5	ITEM 5	P2-5	ITEM 5	
2	24	GRN	P1-1	ITEM 5	P2-1	ITEM 5	
2	24	BLK	P1-2	ITEM 5	P2-2	ITEM 5	
2	24	BRN	P1-9	ITEM 5	P2-9	ITEM 5	
2	24	ORN	P1-8	ITEM 5	P2-8	ITEM 5	
2	24	BLU	P1-10	ITEM 5	P2-10	ITEM 5	
3	24	BLK	P1-23	ITEM 5	P3-2	ITEM 5	
3	24	GRN	P1-21	ITEM 5	P3-4	ITEM 5	
3	24	WHT	P1-20	ITEM 5	P3-5	ITEM 5	
3	24	RED	P1-17	ITEM 5	P3-7	ITEM 5	
3	24	DRAIN	P1-18	ITEM 5	ITEM 8	ITEM 9	SEE NOTES 4,8



VARIATION: OI ONLY

REVISION HISTORY		
DATE	ECO NUMBER	REV.

TITLE		DOCUMENT NUMBER	
SCALE	SHEET	NUMBER	REV.
1/1	2 OF 2	DIA 7016487-0-0 A	



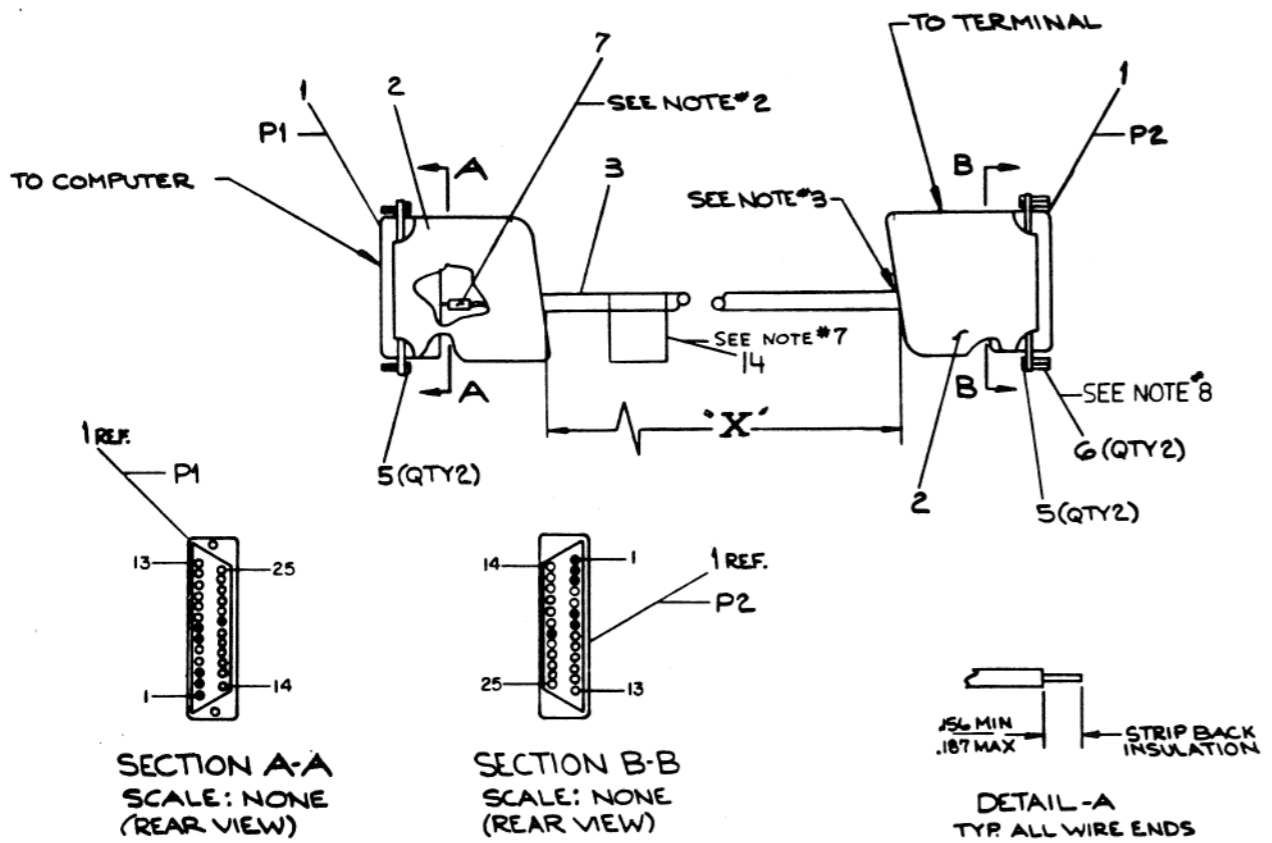
THE DRAWING AND SPECIFICATIONS HEREIN ARE THE PROPERTY OF DIGITAL EQUIPMENT CORPORATION AND SHALL NOT BE REPRODUCED OR COPIED OR USED IN WHOLE OR IN PART AS THE BASIS FOR THE MANUFACTURE OR SALE OF ITEMS WITHOUT WRITTEN PERMISSION. COPYRIGHT © 1975 DIGITAL EQUIPMENT CORPORATION

WIRE TABLE							
ITEM NO.	AWG	COLOR	FROM		TO		REMARKS
			CONNECTION	WITH	CONNECTION	WITH	
3	22	BLK	P1-7 NOTE #4	4	P2-7 NOTE #4	4	
3		RED	P1-2	8	P2-3	8	
3		SHIELD	P1-1 NOTE #2 & 4	4 & 7	P2-1 NOTE #2	4 & 7	
3		BLK	P1-7 NOTE #4	4	P2-7 NOTE #4	4	
3		WHT	P1-3	8	P2-2	8	
3		SHIELD	P1-1 NOTE #2 & 4	4 & 7	P2-1 NOTE #2	4 & 7	
3		BLK	P1-6	8	P2-20	8	
3		GRN	P1-20	8	P2-6	8	
3	22	SHIELD	SEE NOTE #3	-	SEE NOTE #3	-	

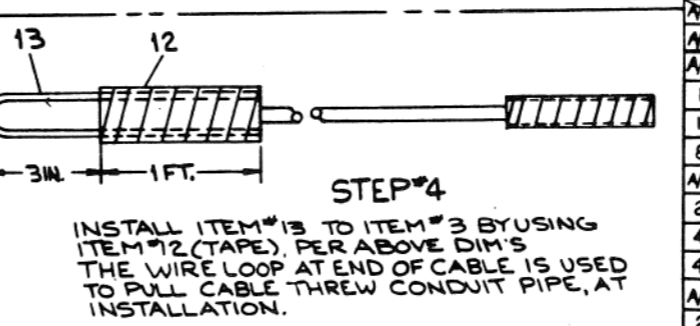
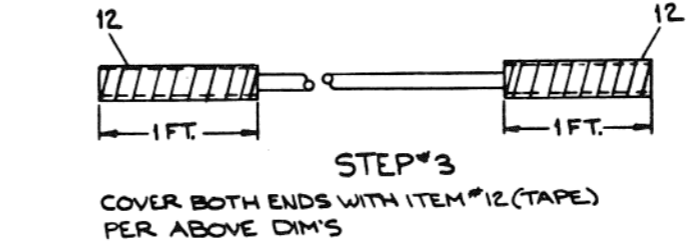
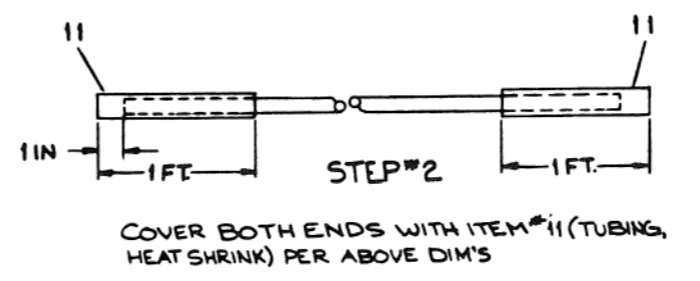
LEGEND		
NUMBER	VARIATION	REMARKS
BC03M-01	DIM'S X	
BC03M-25	1 FT.	
BC03M-A0	25 FT.	
BC03M-B5	100 FT.	
BC03M-B5	250 FT.	SEE NOTE 10
BC03M-E0	500 FT.	SEE NOTE 10
BC03M-L0	1000 FT.	SEE NOTE 10
BC03M-H5	750 FT.	SEE NOTE 10

VARIATIONS CONTINUED ON SECOND SHEET

- NOTES:
- VARIATIONS AND LENGTHS SHOWN IN LEGEND ARE STANDARD AND ARE SPECIFIED BY NUMERIC DESIGNATION IN FOOT INCREMENTS, THE TOLERANCE ON DIMENSION 'X' WILL BE ±2% OF THE FOOT INCREMENT.
  - DRAIN WIRES TO BE ENCLOSED WITH ITEM #7 (TUBING) FROM END OF CABLE JACKET TO POINT WHERE THEY ENTER CONTACT.
  - CUT BACK DRAIN WIRE TO OUTER INSULATION ON BOTH ENDS.
  - THERE ARE TWO WIRES INSTALLED IN EACH #18-20 GA CONTACT (ITEM #4)
  - USE INSERTION/EXTRACTION TOOL (ITEM #9) TO CONSTRUCT CABLE. THIS PIECE IS DISCARDED AFTER USE.
  - THIS VARIATION IS NORMALLY A SPECIAL LOW VOLUME LENGTH.
  - LABEL PER DEC. STD. 022.
  - REMOVE ITEM #6 FOR CONNECTION TO UNITS WITHOUT CABLES I.E. VT05, VT100, ETC.
  - AT THE DISCRETION OF THE MANUFACTURING SITE ITEM #8 MAY BE SUBSTITUTED WITH P/N 1212583-00.
  - USE STEPS 1 THROUGH 4 FOR THIS VAR. THEN STOCK IN KIT FORM AS FOLLOWS: PUT ITEMS 1, 2, 5, 6 & 9, AND ONE (1) COPY OF THIS PRINT INTO PLASTIC BAG (ITEM #10), FOLD OVER CABLE (ITEM #3) AND STAPLE TOGETHER.



STEP #1  
INSTALL ITEM #4, 7 AND 8 TO ITEM #3 (CABLE) PER WIRE TABLE



CAUTION: OFF SHEET PARTS LIST EXISTS. REFER TO K-PL-BC03M-0-0.

QTY	DESCRIPTION	DWG. PART NO.	ITEM NO.
13	WIRE #14 AWG (2 FT 6 IN LG)	9107370-00	13
12	TAPE (ROLL)	9009507	12
11	TUBING (HEAT SHRINK)	9107252-00	11
10	BAG, PLASTIC	9905129-21	10
9	TOOL, INSERT/EXTRACT	4700024	9
8	SOCKET #22	1212583-0	8
7	TUBING #18 GA (NAT)	9107278-11	7
6	SPACER #4-40 X .25 LG.	9008496	6
5	SCR. RETAINER (MALL)	9009722	5
4	SOCKET #18-20	1212583-1	4
3	CABLE	9107223	3
2	HOOD	1210493-50	2
1	PLUG	1211354	1

UNLESS OTHERWISE SPECIFIED DIMENSIONS ARE IN INCHES	
ANGLES	CLASS OF ACCURACY
CHECK ONE	CHECK ONE
SURFACE QUALITY	MEDIUM
MICRONCHES	PREFERRED

THIRD ANGLE PROJECTION

DRN. [Signature] FIRST USED ON [Date]

CHKD. [Signature] DATE [Date]

PROJ. [Signature] DATE [Date]

PROF. [Signature] DATE [Date]

REMOVE DIMS AND BREAK SHARP CORNERS

DO NOT SCALE DRG

MATERIAL SEE PARTS LIST

FINISH [Symbol]

SCALE 1/1

SHEET 1 OF 2

SIZE CODE D

NUMBER JA BC03M-0-0

REV. F

CORD, EXTENSION NULL MODEM

MK

REV.	DATE	BY	CHKD.
1	10-21-75	B. SAMPSON	
2	11-13-75	B. SAMPSON	
3	11-13-75	B. SAMPSON	
4	11-13-75	B. SAMPSON	
5	11-13-75	B. SAMPSON	
6	11-13-75	B. SAMPSON	
7	11-13-75	B. SAMPSON	
8	11-13-75	B. SAMPSON	
9	11-13-75	B. SAMPSON	
10	11-13-75	B. SAMPSON	
11	11-13-75	B. SAMPSON	
12	11-13-75	B. SAMPSON	
13	11-13-75	B. SAMPSON	
14	11-13-75	B. SAMPSON	
15	11-13-75	B. SAMPSON	
16	11-13-75	B. SAMPSON	
17	11-13-75	B. SAMPSON	
18	11-13-75	B. SAMPSON	
19	11-13-75	B. SAMPSON	
20	11-13-75	B. SAMPSON	

THIS DRAWING AND SPECIFICATIONS HEREIN ARE THE PROPERTY OF DIGITAL EQUIPMENT CORPORATION AND SHALL NOT BE REPRODUCED OR COPIED OR USED IN WHOLE OR IN PART AS THE BASIS FOR THE MANUFACTURE OR SALE OF ITEMS WITHOUT WRITTEN PERMISSION.  
 DIGITAL EQUIPMENT CORPORATION  
 COPYRIGHT © 1982

REV. 0-0-WE058  
 DIA BC03M-0-0

LEGEND CONT.		
NUMBER	DIM*X*	REMARKS
BC03M-15	15 FT	SEE NOTE 6
BC03M-35	35 FT	SEE NOTE 6
BC03M-50	50 FT	SEE NOTE 6
BC03M-75	75 FT	SEE NOTE 6
BC03M-A5	150 FT	SEE NOTE 6
BC03M-B0	200 FT	SEE NOTE 6

D

C

B

A

D

C

B

A

REV. F  
 DIA BC03M-0-0

REVISION HISTORY		
DATE	ECO NUMBER	REV.

TITLE CORD, EXTENSION  
 NULL MODEM

DOCUMENT NUMBER			
SIZE	CODE	NUMBER	REV.
D	IA	BC03M-0-0	F
SCALE NONE		SHEET 2 OF 2	

DRD 137A

MK

8

7

6

5

4

3

2

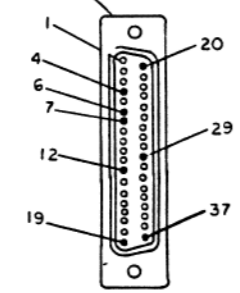
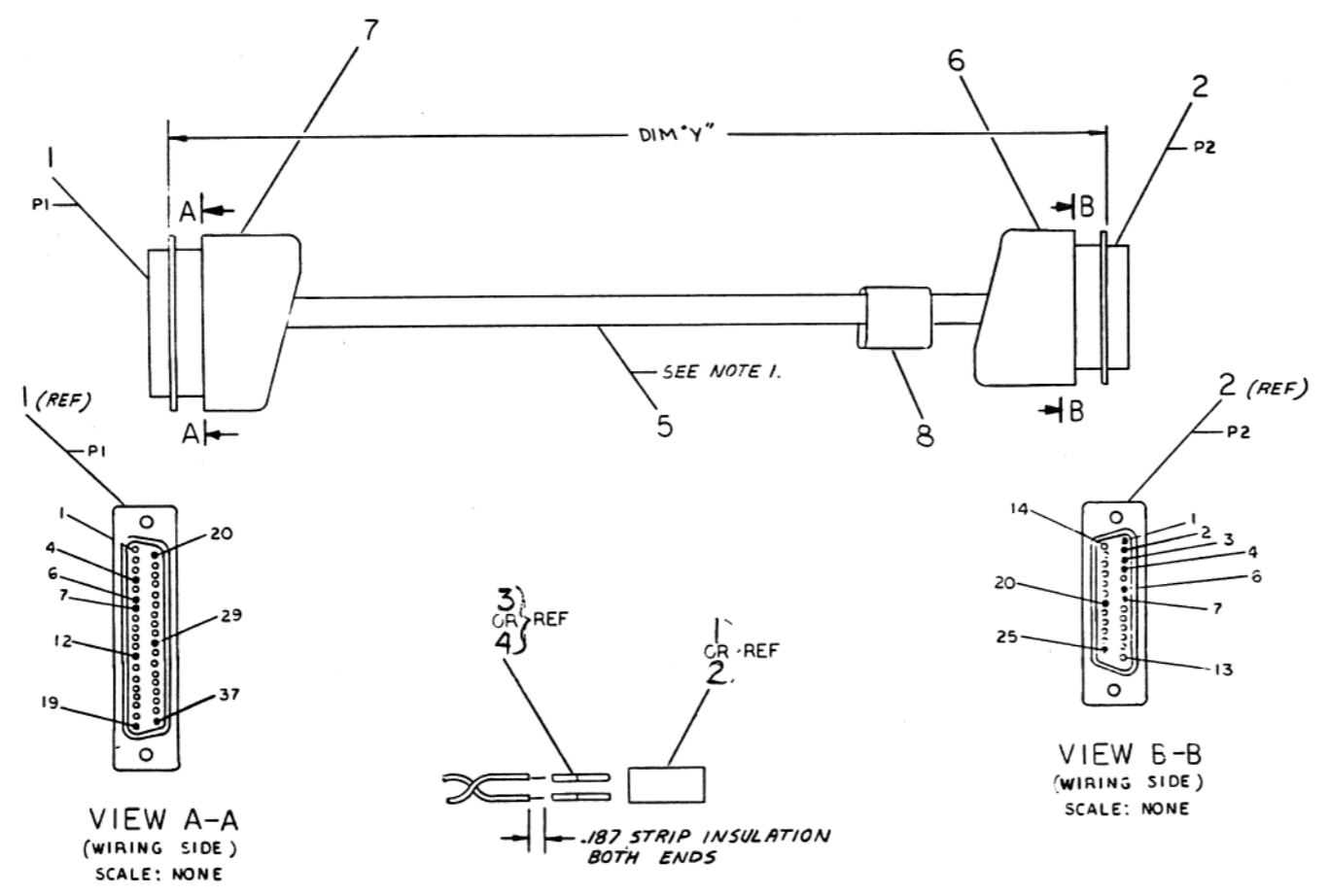
1

"THIS DRAWING AND SPECIFICATIONS HEREBY ARE THE PROPERTY OF DIGITAL EQUIPMENT CORPORATION AND SHALL NOT BE REPRODUCED OR COPIED OR USED IN WHOLE OR IN PART AS THE BASIS FOR THE MANUFACTURE OR SALE OF ITEMS WITHOUT WRITTEN PERMISSION. COPYRIGHT © 1978, DIGITAL EQUIPMENT CORPORATION"

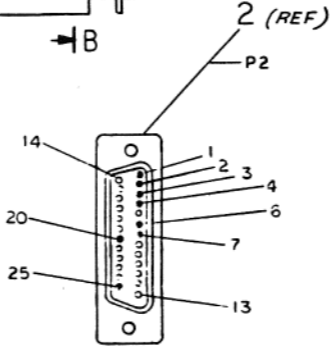
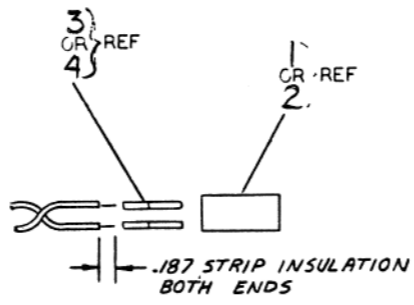
ITEM NO.	DESCRIPTION			FROM		TO		REMARKS
	AWG	COLOR	CONN	WITH	CONN	WITH		
5	22	BLK	P1-37	ITEM 3	P2-1	ITEM 4		
5	22	RED	P1-4	ITEM 3	P2-2	ITEM 4		
5	22	WHT	P1-6	ITEM 3	P2-3	ITEM 4		
5	22	GRN	P1-7	ITEM 3	P2-4	ITEM 4		
5	22	BRN	P1-29	ITEM 3	P2-6	ITEM 4		
5	22	GRY	P1-20	ITEM 3	P2-7	ITEM 4		
5	22	BLU	P1-12	ITEM 3	P2-20	ITEM 4		
5	22	ORN	P1-19	ITEM 3	P2-25	ITEM 4		

LEGEND		
PART NO.	VARIATION DIM. "Y"	REMARKS
BC44B-01	12.00 IN ± 1 IN	

NOTES:  
1. THE YELLOW AND PURPLE CONDUCTORS ARE NOT USED, AND SHOULD BE CUT NEAR CABLE JACKET ON BOTH ENDS.



VIEW A-A  
(WIRING SIDE)  
SCALE: NONE



VIEW B-B  
(WIRING SIDE)  
SCALE: NONE

DESCRIPTION	DWG. PART NO.	ITEM NO.
1 LABEL, CABLE I.D.	3616073-00	8
1 HOOD, CONN. CABLE CLAMP	1214066-00	7
1 HOOD, HOUSING	1210493-50	3
W/P CABLE #22 AWG (10 COND)	3107623-00	5
8 CONTACT SOCKET, CRIMP	1210493-41	4
8 CONTACT PIN, CRIMP	1210493-39	3
1 CONN. HOUSING	1210493-32	2
1 CONN. PLUG 37 PIN	1214065-00	1

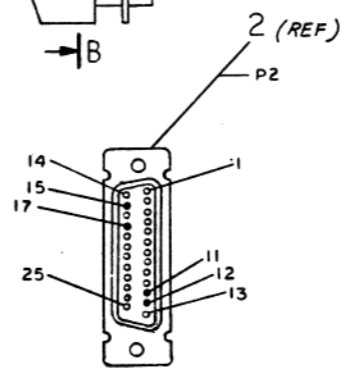
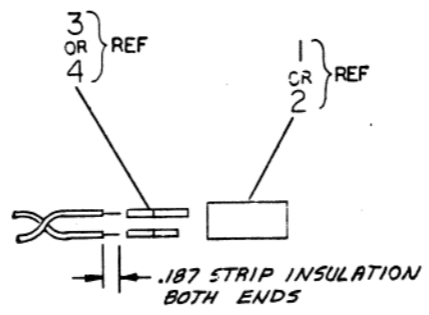
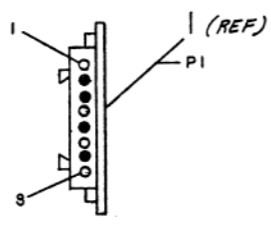
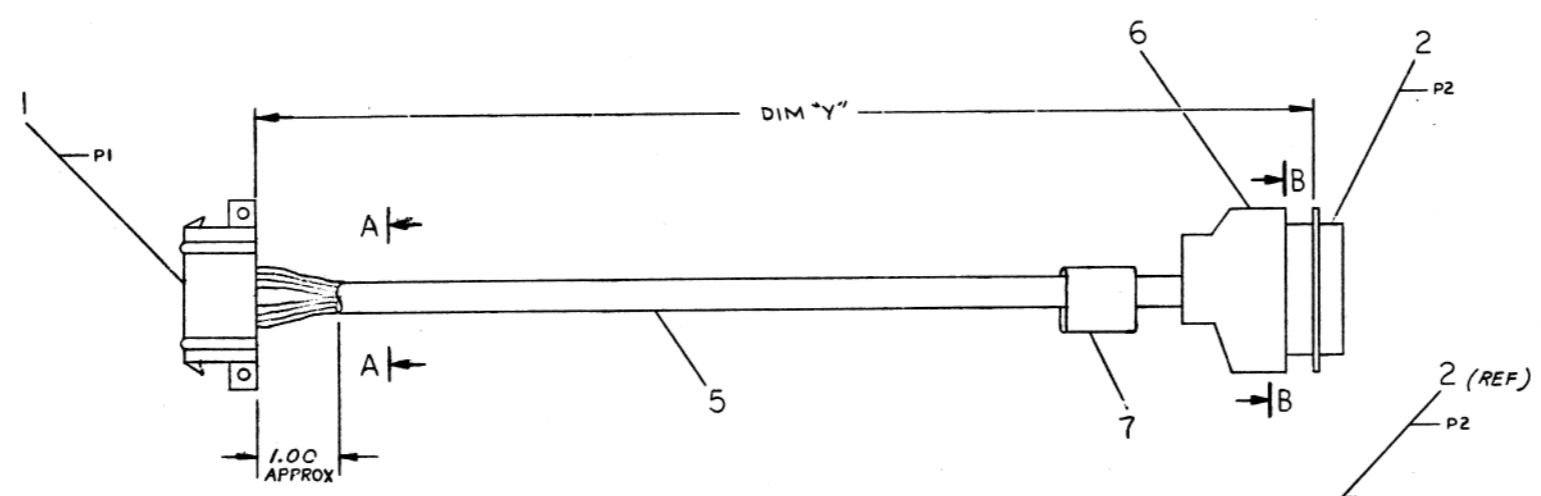
QUANTITY & VARIATION		UNLESS OTHERWISE SPECIFIED DIMENSIONS ARE IN INCHES										
THIRD ANGLE PROJECTION	DRN. <i>[Signature]</i> 1/10/78	ANGLES OF 30°		CLASS OF ACCURACY		NOMINAL DIMENSION RANGE INCHES						
REMOVE BURRS AND BREAK SHARP CORNERS	CHK'D <i>[Signature]</i> 1/10/78	SURFACE QUALITY IN		OVER 8	OVER 12	OVER 17	OVER 22	OVER 28	OVER 35	OVER 42	OVER 48	OVER 54
DO NOT SCALE DWG	ENGR. <i>[Signature]</i> 1/10/78	MICROINCHES		1.004	1.008	1.012	1.016	1.020	1.024	1.028	1.032	1.036
MATERIAL SEE PARTS LIST	PROD. <i>[Signature]</i> 1/10/78	PREFERRED		1.012	1.016	1.020	1.024	1.028	1.032	1.036	1.040	1.044
FINISH	FIRST USED ON 11/44 digital	NEXT HIGHER ASSY.		TITLE CABLE ADAPTER ASSEMBLY (TO EIA RS422 & RS423)								
	B-00-11/44-00	MATERIAL		SIZE CODE		NUMBER		REV.				
	SCALE 1/1	SEE PARTS LIST		D I A		BC44B-0-0		A				
	SHEET 1 OF 1			DIST.								

REV.	CHANGE NO.	DATE	BY	APP.
1	1	1/10/78	[Signature]	[Signature]

THIS DRAWING AND SPECIFICATIONS, HEREIN, ARE THE PROPERTY OF THE COMPANY AND SHALL REMAIN THE PROPERTY OF THE COMPANY WHETHER OR NOT THE SAME ARE USED IN CONNECTION WITH THE SALE OF EQUIPMENT © 1973 MILITARY EQUIPMENT CORPORATION

WIRE TABLE						
ITEM NO.	DESCRIPTION	FROM		TO		REMARKS
		CONN.	WITH	CONN.	WITH	
5	22 BLK	P1-2	ITEM 3	P2-11	ITEM 4	
5	22 RED	P1-3	ITEM 3	P2-12	ITEM 4	
5	22 WHT	P1-5	ITEM 3	P2-15	ITEM 4	
5	22 GRN	P1-7	ITEM 3	P2-17	ITEM 4	

LEGEND		
PART NO.	VARIATION	REMARKS
BC44C-01	12.00 IN ± 1 IN	



DESCRIPTION	DWG. PART NO.	ITEM NO.
1 LABEL, CABLE I.D.	3616073-00	7
1 CONN JUNCTION SHELL	1210493-50	6
4/8 CABLE #22AWG (4 COND)	9107706-00	5
4 CONTACT, SOCKET CRIMP	1210493-41	4
4 MIN/L PIN, SOCKET 30-22AWG	1209379-03	3
1 CONN RECPT 25 SOCKET	1210493-32	2
1 MAT-N-LOCK, B PIN, HOUSING, SMT	1209340-00	1

UNLESS OTHERWISE SPECIFIED DIMENSIONS ARE IN INCHES			
ANGLES MFG 30°	CLASS OF ACCURACY	NORMAL DIMENSION RANGE INCHES	
SURFACE QUALITY M	CHECK ONE	OVER 0.1	OVER 0.125
		OVER 0.25	OVER 0.5
MICROMETERS	PREFERRED	1.000	1.012
		1.024	1.036

THIRD ANGLE PROJECTION	DRN. <i>[Signature]</i> 11/87	FIRST USED ON	11/44 digital
REMOVE BURRS AND BREAK SHARP CORNERS	CHK'D <i>[Signature]</i> 11/87	TITLE	CABLE ADAPTER ASSEMBLY (TO 20MA)
DO NOT SCALE DWG	PROJ. ENGR. <i>[Signature]</i> 11/87	SIZE	B-DD-11/44-0-0
MATERIAL SEE PARTS LIST	PROD. <i>[Signature]</i> 11/87	SCALE	1/1
FINISH	NEXT HIGHER ASSY.	NUMBER	D IA BC44C-0-0
SHEET 1 OF 1		REV.	A

REV.	CHANGE NO.	DESCRIPTION
1	A	INITIAL DESIGN
2	B	REVISED TO 20MA

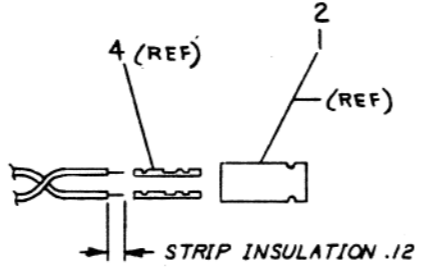
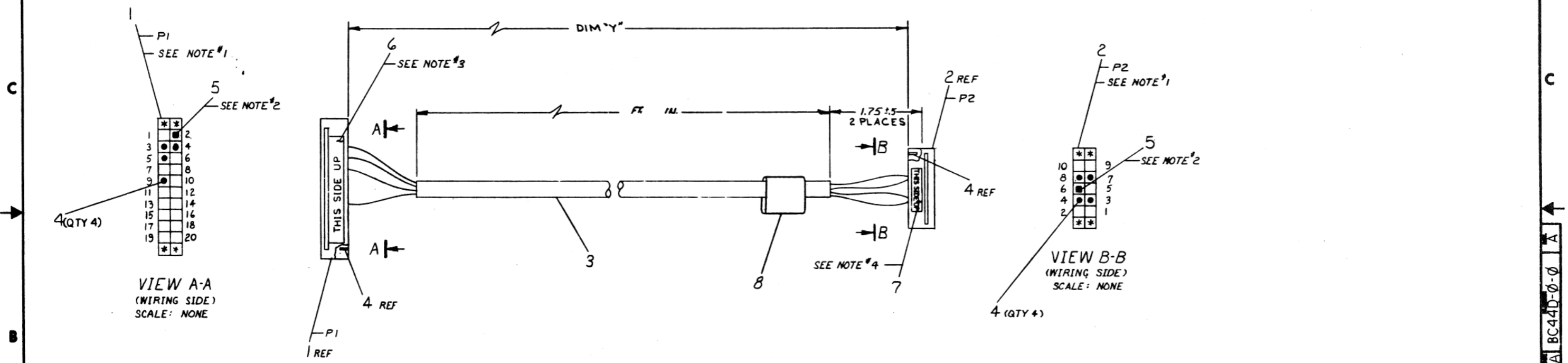
DEC FORM 36  
888 100-6

THIS DRAWING AND SPECIFICATIONS HEREAFTER ARE THE PROPERTY OF DIGITAL EQUIPMENT CORPORATION AND SHALL NOT BE REPRODUCED OR COPIED IN WHOLE OR IN PART AS THE BASIS FOR THE MANUFACTURE OR SALE OF ITEMS WITHOUT WRITTEN PERMISSION. DIGITAL EQUIPMENT CORPORATION © 1975

WIRE TABLE							
ITEM NO.	DESCRIPTION		FROM		TO		REMARKS
	AWG	COLOR	CONN	WITH	CONN	WITH	
3	22	BLK	PI-3	ITEM 4	P2-7	ITEM 4	
3	22	RED	PI-4	↑	P2-8	↓	
3	22	WHT	PI-5	↑	P2-3	↓	
3	22	GRN	PI-9	ITEM 4	P2-4	ITEM 4	

LEGEND		
PART NO	VARIATION DIM "Y"	REMARKS
BC44D-09	9FT. ± 2IN.	
BC44D-06	6FT. ± 2IN.	

- NOTES:
- LOCATIONS MARKED (4) IN VIEWS A-A AND B-B ARE NOT TO BE USED.
  - CONNS P1-2 AND P2-6 (ITEMS 1 AND 2) SHALL HAVE ONE KEY (ITEM 5) INSERTED AS SHOWN.
  - PLACE LABEL (ITEM 6) ON P1 CONNECTOR (ITEM 1) AS SHOWN.
  - PLACE LABEL (ITEM 7) ON P2 CONNECTOR (ITEM 2) AS SHOWN.



DESCRIPTION	DWG/PART NO.	ITEM NO.
1 LABEL, CABLE I.D.	3616073-00	8
1 LABEL (THIS SIDE UP) .50 X .25	3611567-02	7
1 LABEL (THIS SIDE UP) 1.0 X .25	3611567-01	6
2 KEY, DUMMY, POLAR	9009140-00	5
8 SOCKET CRIMP CONTACT	1210089-07	4
NR CABLE 22 AWG (4 COND)	9101706-00	3
1 TERM. HSG (14 POS)	1210918-30	2
1 TERM. HSG (24 POS)	1210918-25	1

REV.	DATE	BY	CHK
1	11/14/75	W. AUPPERLEE	M. AUPPERLEE
2	12/17/75	M. AUPPERLEE	M. AUPPERLEE

THIRD ANGLE PROJECTION		FIRST USED ON 11/44	
REMOVE BURRS AND BREAK SHARP CORNERS		TITLE CABLE ASSY FOR TU58	
DO NOT SCALE DIMS		NEXT HIGHER ASSY.	
MATERIAL SEE PARTS LIST		E-RD-1016719-0-0	
FINISH		SCALE 1/1	
SHEET 2 OF 1		SIZE CODE D IA	
		NUMBER BC44D-0-0	
		REV. A	

8  
 THIS DRAWING AND SPECIFICATIONS HEREBY ARE THE PROPERTY OF DIGITAL EQUIPMENT CORPORATION AND SHALL NOT BE REPRODUCED OR COPIED OR USED IN WHOLE OR IN PART AS THE BASIS FOR THE MANUFACTURE OR SALE OF ITEMS WITHOUT WRITTEN PERMISSION. COPYRIGHT © 1983 DIGITAL EQUIPMENT CORPORATION

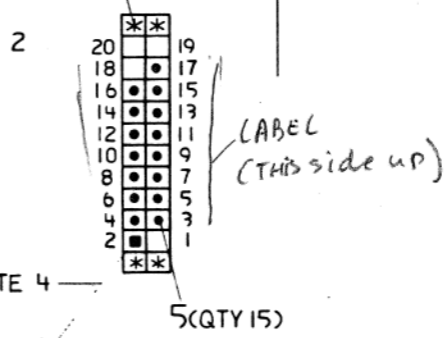
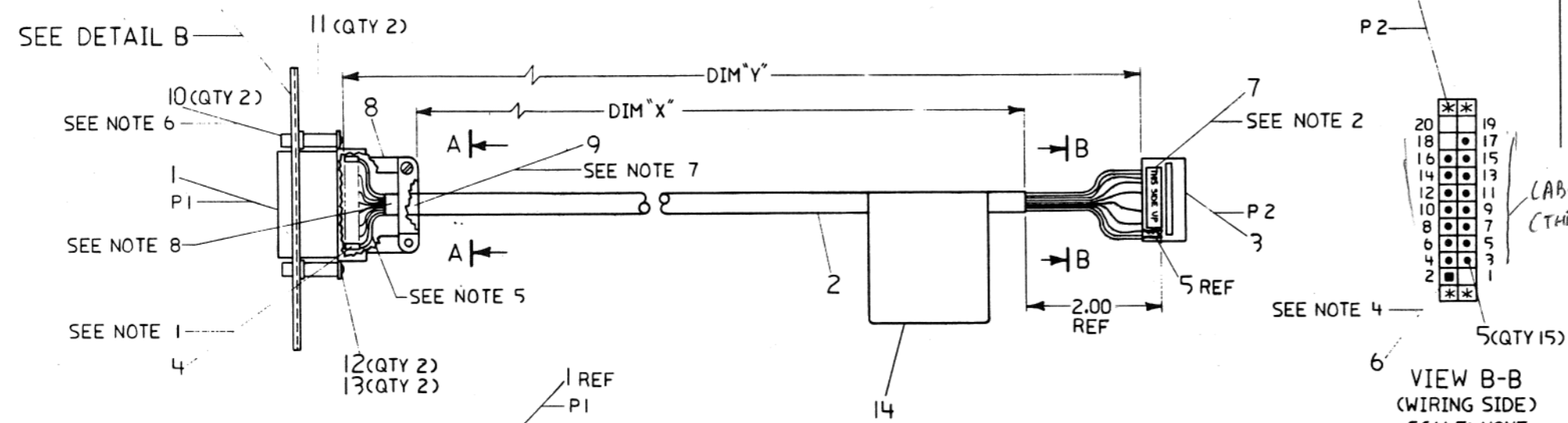
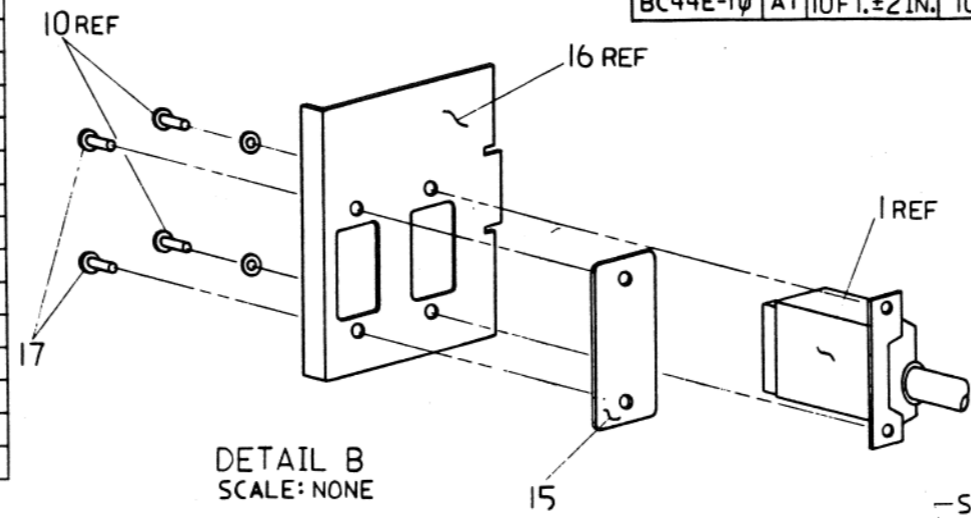
6  
 0-0-344E-0-0  
 DIA BC44E-0-0

5  
 4  
 3  
 2  
 1

WIRE TABLE						
ITEM NO.	AWG	COLOR	FROM CONN.	WITH	TO CONN.	WITH
2	22	BLU	PI-1	SOLDER	P2-3	5
↑	↑	WHT/BLK	PI-2	↑	P2-4	↑
		RED/BLK	PI-3		P2-5	
		GRN/BLK	PI-4		P2-6	
		BLK	PI-5		P2-7	
		WHT	PI-6		P2-8	
		ORN/BLK	PI-7		P2-9	
		BLU/BLK	PI-8		P2-10	
		BLK/WHT	PI-11		P2-11	
		RED/WHT	PI-12		P2-12	
		ORN	PI-15		P2-13	
		GRN	PI-17		P2-14	
		RED	PI-20		P2-15	
↓	↓	BLU/WHT	PI-24	↓	P2-16	↓
2	22	GRN/WHT	PI-25	SOLDER	P2-17	5

PART NO.		VARIATION	
REV		DIM "X"	DIM "Y" PRECUT
BC44E-10	A1	10FT. ± 2IN.	10FT. 5IN.

- NOTES:
- EACH SOLDERED CONTACT ON (PI) SHALL BE INSULATED WITH A .25 IN. PIECE OF SHRINK TUBING (ITEM #4).
  - PLACE LABEL (ITEM #7) AS SHOWN ON CONN. (ITEM #3).
  - PINS MARKED (\*) IN VIEW B-B ARE NOT TO BE USED.
  - CONN P2-2 (ITEM #3) SHALL HAVE ONE KEY (ITEM #6) INSERTED AS SHOWN.
  - WIRES COMING FROM CENTER OF PLUG CONN SHOULD BE FANNED OUT INTO HOOD SO THAT THEY ARE NOT BUNCHED.
  - PLACE LOCKWASHER (SUPPLIED WITH ITEM #10) BETWEEN SPACER AND CONNECTOR FLANGE DISCARD NUT (QTY 2) SUPPLIED WITH ITEM #10.
  - FOR STRAIN RELIEF WRAP 2 TURNS OF TAPE (ITEM #9) AROUND CABLE (ITEM #2) AS SHOWN.
  - CABLE JACKET INSULATION (ITEM #2) SHOULD EXTEND BEYOND STRAIN RELIEF CLAMP (ITEM #8) A MIN. OF .20 INCH.



CAUTION: OFF SHEET PARTS LIST EXISTS  
 SEE K-PL-BC44E-0-DBP.  
 Z7208

REVISION HISTORY	REV	A
ECO NUMBER		
DATE		
INITIAL		

FIRST HIGHER ASSY  
 E-UA-11/44-0-0

DESCRIPTION	DRAWING NO.	PART NO.	ITEM NO.
UNLESS OTHERWISE SPECIFIED DIMENSIONS ARE IN INCHES AND THE FOLLOWING TOLERANCES APPLY (PER DEC STD 114)			
INCHES TOLERANCES	ANGLES ± 0° 30'	APPLICABLE DIMENSION RANGE	
		OVER	UNDER
X = ± .1 Y = ± .05 Z = ± .02	SURFACE QUALITY	TO 12	TO 12.0
		TO 12.0	TO 40.0
MICROMETERS	SURFACE QUALITY	± .004	± .010
		± .008	± .016
THIRD ANGLE PROJECTION	DATE	TITLE	
DO NOT SCALE DRAWING	6/8/83	digital	
REMOVE BURRS AND BREAK SHARP CORNERS	DATE	FILTERED CABLE ASSY	
MATERIAL	16 JUN 83	DOCUMENT NUMBER	
SEE K-PL-BC44E-0-DBP	DATE	DIA BC44E-0-0	
FINISH	16 JUN 83	SCALE 1/1	
	DATE	SHEET 1 OF 1	
	16 JUN 83		