

DIGITAL EQUIPMENT CORPORATION MAYNARD, MASSACHUSETTS			QUANTITY / VARIATION							
PARTS LIST			H777-AA	H777-AB	H777-BA	H777-BB	H777-CA	H777-CB	H777-DA	H777-DB
MADE BY	CHECKED	SECTION								
DATE	DATE	ISSUED SECT.								
ENG	PROD	ISSUED SECT.								
DATE	DATE	ISSUED SECT.								
ITEM NO.	DWG NO. / PART NO.	DESCRIPTION	H777-AA	H777-AB	H777-BA	H777-BB	H777-CA	H777-CB	H777-DA	H777-DB
1	D-IA-7011248-0-0	CHASSIS ASSY P.S.	1	1	1	1	-	-	-	-
2	9007031-05	TIE WRAP	A/RA/RA/RA/RA/RA/RA/RA/R							
3	D-AD-7011075-0-0	A/C INPUT ASSY (120V)	1	-	1	-	-	-	-	-
4	D-AD-7011075-1-0	A/C INPUT ASSY (230V)	-	1	-	-	-	-	-	-
5	9007035	GROMMET CAT.	A/RA/RA/RA/RA/RA/RA/RA/R							
6	9006563	NUT, KEPS #8 - 32	2	2	2	2	2	2	2	2
7	E-MD-7413825-0-0	COVER, POWER SUPPLY	1	1	1	1	-	-	-	-
8	D-AD-7011073-0-0	+5V REGULATOR ASSY	1	1	1	1	-	-	-	-
9	D-CS-5411601-0-1	MOS. REG. H777	1	1	1	1	1	1	1	1
10	9006021-01	SCR. PHIL HD PAN #6 - 32 x .31	4	4	2	2	3	3	1	1
11	9008509	STRAIN RELIEF	1	1	1	1	-	-	-	-
12	D-IA-7012320-0	POWER CORD (115V)	1	-	1	-	-	-	-	-
13	D-IA-7012320-1	POWER CORD (230V)	-	1	-	1	-	-	-	-
14	9006022-1	SCR. PHIL HD PAN #6-32 x .38	6	6	4	4	-	-	-	-
15	9006633	WASHER, INT. TOOTH #6	10	10	6	6	3	3	1	1
16	9009771-02	CLAMP	2	2	2	2	-	-	-	-
17	1209403-01	FAN, BOXER 115V, 50/60 HZ	1	1	1	1	1	1	1	1
18	9006020-2	SCR. PHIL FLAT HD #6 - 32 x .25	7	7	7	7	-	-	-	-
19	9008185	NUT, KEPS #6 - 32	-	-	-	-	2	2	2	2
20	9006023-1	SCR. PHIL HD PAN #6 - 32 x .44	4	4	4	4	4	4	4	4
21	9006074-3	SCR., PHIL TRUSS #10 - 32 x .62	4	4	4	4	4	4	4	4
22	9007651	WASHER, EXT. TOOTH #10	4	4	4	4	4	4	4	4
TITLE	ASSY NO.	SIZE	CODE	NUMBER	REV	ECO NO				
POWER SUPPLY ASSY (H777)	E-UA-H777-0-0	A	PL	H777-0-0	M	100005				
SHEET	OF	DIST								
1	3									

DEC FORM DEC 16 (325) 1031 N870
DRA 110

DIGITAL EQUIPMENT CORPORATION MAYNARD, MASSACHUSETTS			QUANTITY / VARIATION							
PARTS LIST			H777-AA	H777-AB	H777-BA	H777-BB	H777-CA	H777-CB	H777-DA	H777-DB
MADE BY	CHECKED	SECTION								
DATE	DATE	ISSUED SECT.								
ENG	PROD	ISSUED SECT.								
DATE	DATE	ISSUED SECT.								
ITEM NO.	DWG NO. / PART NO.	DESCRIPTION	H777-AA	H777-AB	H777-BA	H777-BB	H777-CA	H777-CB	H777-DA	H777-DB
45	9006634	WASHER INT. TOOTH LOCK #8	-	-	-	-	1	1	1	1
46	B-IA-7013311-1	NO POWER CORD ASSEMBLY 130V	-	-	-	-	-	-	-	-
47	9006011-1	SCR PH HD PAN #4 - 40 x .30	-	-	-	-	2	2	2	2
48	9006022	WASHER INT. TOOTH LOCK #4	-	-	-	-	2	2	2	2
49	9008020-02	SCR. PHIL FLAT HD #6 32 x .18	1	1	1	1	-	-	-	-
50	7011411-11	CABLE, CONSOLE CONTROL	-	-	-	-	REF	REF	REF	REF
51	9006022-03	SCR. PHIL. TRUSS #6-32 x .38	-	-	-	-	4	4	2	2
52	C-IA-7013938-1	CABLE JUMPER	-	-	-	-	1	1	1	1
53	C-IA-7013938-0	CABLE JUMPER	-	-	-	-	1	1	1	1
54	C-IA-7013939-0	CABLE GROUNDING	-	-	-	-	1	1	1	1
55	C-IA-7420323-00	AC POWER CORD W/LABLE (120V)	-	-	-	-	1	-	-	-
56	C-IA-7420323-01	AC POWER CORD W/LABLE (240V)	-	-	-	-	1	-	-	-
57	9006656	WASHER, FLAT	4	4	2	2	3	3	1	1
58	9006025-01	SCR, PAN PHIL #6-32 x 5/8	3	3	3	3	3	3	3	3
59	9006560	NUT, KEP 6-32	3	3	3	3	3	3	3	3
60	7011412-3C	CABLE ASSY	1	1	1	1	-	-	-	-
61	9006561	NUT, HEX #8-32	1	1	1	1	-	-	-	-
62	7011414-1F	CABLE, CONSOLE CONTROL	REF	REF	REF	REF	-	-	-	-
63	9009255-00	LABEL	1	1	1	1	1	1	1	1
64	3614833	LABEL, WARNING	-	-	-	-	1	1	1	1
TITLE	ASSY NO.	SIZE	CODE	NUMBER	REV	ECO NO				
POWER SUPPLY ASSY (H777)	E-UA-H777-0-0	A	PL	H777-0-0	M	100005				
SHEET	OF	DIST								
3	3									

DEC FORM DEC 16 (325) 1031 N870
DRA 110

DIGITAL EQUIPMENT CORPORATION MAYNARD, MASSACHUSETTS			QUANTITY / VARIATION							
PARTS LIST			H777-AA	H777-AB	H777-BA	H777-BB	H777-CA	H777-CB	H777-DA	H777-DB
MADE BY	CHECKED	SECTION								
DATE	DATE	ISSUED SECT.								
ENG	PROD	ISSUED SECT.								
DATE	DATE	ISSUED SECT.								
ITEM NO.	DWG NO. / PART NO.	DESCRIPTION	H777-AA	H777-AB	H777-BA	H777-BB	H777-CA	H777-CB	H777-DA	H777-DB
23	C-IA-7413773-0-0	BRACKET, FAI	2	2	2	2	2	2	2	2
24	1210984-05	INS SHEET 9.0 ± .1 X 1.5 ± .1	A/RA/RA/RA/RA/RA/RA/RA/R							
25	B-DC-7414744-0-0	DECAL H777 P.S.	1	1	1	1	-	-	-	-
26	A-PS-3612680-0-0	DECAL, CHASSIS GROUND	2	2	2	2	2	2	2	2
27	C-IA-7011412-0F	CABLE, CHASSIS GROUND	1	1	1	1	1	1	1	1
28	C-IA-7011412-1H	CABLE, CONSOLE GROUND	-	-	-	-	1	1	1	1
29	D-CS-5411599-0-1	CORE REG. H777	1	1	-	-	1	-	-	-
30	9007015	GROMMET	-	-	-	-	1	1	1	1
31	D-IA-7417407-0-0	CHASSIS P.S.	-	-	-	-	1	-	-	-
32	D-AD-7012910-0-0	A/C INPUT ASSY (120V)	-	-	-	-	1	-	-	-
33	D-AD-7012910-1-0	A/C INPUT ASSY (230V)	-	-	-	-	1	-	-	-
34	E-IA-7417018-0-0	COVER, POWER SUPPLY	-	-	-	-	3	3	1	1
35	A-PS-1213773-0-0	AC RECEPTACLE	-	-	-	-	1	1	1	1
36	A-PS-1212877-0-0	FILTER	-	-	-	-	1	1	1	1
37	D-AD-7012909-0-0	+5V REGULATOR ASSY	-	-	-	-	2	2	1	1
38	9009771-1-0	CABLE CLAMP	-	-	-	-	2	2	2	2
39	9006024-01	SCREW, FAN #6 - 32 x .50	-	-	-	-	1	1	1	1
40	9008404-2	SCR PHIL FLAT HD #6 - 32 x .31	1	1	1	1	1	1	1	1
41	9107253-02	TUBING, SHRINK (ORN)	-	-	-	-	1	1	1	1
42	C-IA-7417288-0-0	WIRE A.C. CONN. HARNESS	-	-	-	-	REF	REF	REF	REF
43	B-DC-7414744-1-0	DECAL H777 P.S.	-	-	-	-	1	1	1	1
44	9006037-1	SCR, PHIL PAN HD #8 - 32 x .38	-	-	-	-	1	1	1	1
TITLE	ASSY NO.	SIZE	CODE	NUMBER	REV	ECO NO				
POWER SUPPLY ASSY (H777)	E-UA-H777-0-0	A	PL	H777-0-0	M	100005				
SHEET	OF	DIST								
2	3									

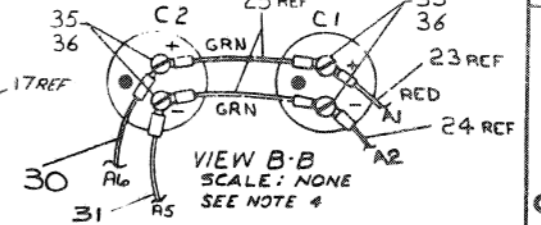
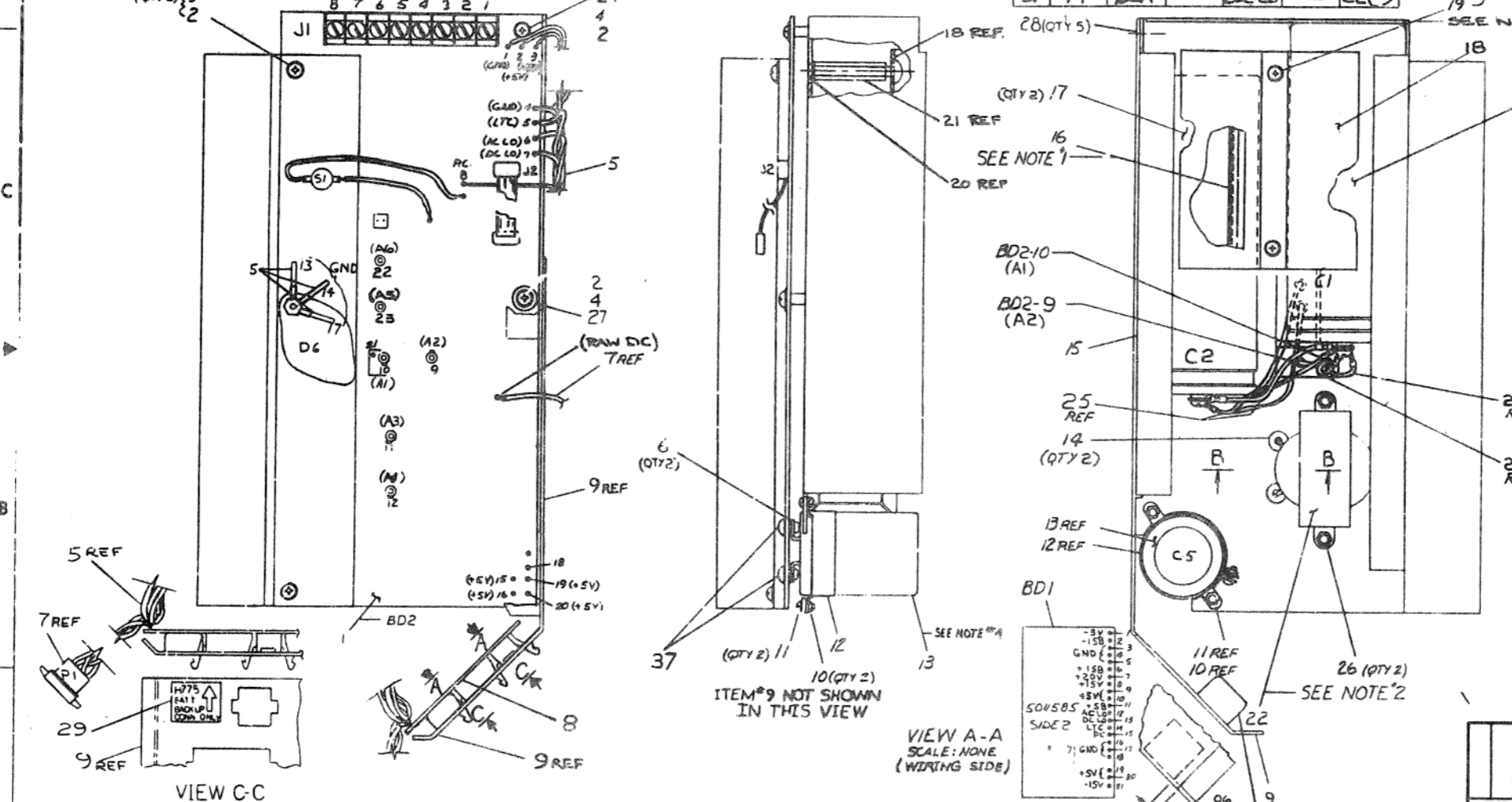
DEC FORM DEC 16 (325) 1031 N870
DRA 110

THIS DRAWING AND SPECIFICATIONS HEREIN ARE THE PROPERTY OF ORBITAL EQUIPMENT CORPORATION AND SHALL NOT BE REPRODUCED OR COPIED IN WHOLE OR IN PART AS THE BASIS FOR THE MANUFACTURE OR SALE OF ITEMS WITHOUT WRITTEN PERMISSION. COPYRIGHT © 1974, ORBITAL EQUIPMENT CORPORATION

WIRE CHART

ITEM NO	DESCRIPTION		FROM		TO		ITEM NO	DESCRIPTION		FROM		TO		ITEM NO	DESCRIPTION		FROM		TO		
	AWG	COLOR	POINT NO	CONN	POINT NO	CONN		AWG	COLOR	POINT NO	CONN	POINT NO	CONN		AWG	COLOR	POINT NO	CONN	POINT NO	CONN	
5	20	WHT	1	BD2-8	18	BD1-15	5	14	BLK	28	BD2-13	11	BD1-4	7	18	GRY	4	BD1-8	9	-	
	14	BRN	2	2	9	1		18	WHT	5	BD1-6	10	-		14	RED	6	BD2-21	13	-	
	14	BLK	3	1	12	5		14	RED	26	19	15	10		18	GRN	7	BD1-2	12	-	
	14	GRN	4	3	13	7		14	RED	25	14	21	17		14	GRN	-	C1(+)	-	C2(+)	
	20	BRN	5	5	19	14		18	BLU	1	BD1-21	11	-		23	14	RED	-	BD2-10	-	C1(+)
	20	BLK	6	4	20	16		14	RED	24	16	22	19		22	-	BARE	-	-	-	BD2-11
20	YEL	7	6	16	12	14	RED	27	BD2-20	23	BD1-20	25	14	GRN	-	C1(-)	-	C2(-)			
20	VIO	8	7	17	13	14	BLK	2	BD1-18	8	-	24	14	BLK	-	BD2-7	-	C1(-)			
14	BLK	30	BD2-17	10	BD1-3	30	14	RED	-	BD2-22	-	C2(+)	31	14	BLK	-	BD2-23	-	C2(-)		

- ### NOTES:
- USE ITEM #16 (SPRIMET) TO COVER RAW METAL EDGES UNDER CAPACITORS.
 - LEADS FROM ITEMS #22, 23 & 24 ARE TO BE CUT FLUSH WITH TOP OF CLAMPS ON ITEM #1. A1, A2, A3 & A4
 - * ASTERISK INDICATES THAT THESE CONN. ALREADY HAVE BEEN MADE ON PLUG PI ON HARNESS D-1A-701560-0-0 THEY ARE SHOWN FOR REF ONLY.
 - ITEMS #17 & #13 ARE TO HAVE THEIR ELECTRICAL CONNECTIONS TORQUED TO 12 IN-LBS (-0, +10) IN-LBS.
 - BEING SCREW TO A NO SLACK POSITION, THEN TIGHTEN WITH 1/2 TO 3/4 TURN ONLY.
 - ITEMS #33 & #34 ARE NOT SHOWN.



OFF SHEET PARTS LIST SEE A-PI-7012909-0-0

DESCRIPTION	QTY	PART NO.	ITEM NO.
BUMPER	1	9009624	32
JUMPER, BLK	1	B-1A-701802-0-0	31
JUMPER, RED	1	B-1A-701801-0-0	30
DECAL, BATT. BACKUP	1	A-DC-7416911-00	29
SCR. FLAT HD #4-32 X.25	5	9006020-2	28
WASHER NYLON #8	2	9006708	27
NUT KEPS #8-32	2	9006668	26
JUMPER (GRN)	2	B-1A-701800-0-0	25
JUMPER (BLK)	1	B-1A-701802-0-0	24
JUMPER (RED)	1	B-1A-701801-0-0	23
CHOKE	1	1173584	22
SPACER HEX #8-32 X 1.25	2	9006683	21
WASHER INT. TOOTH COCK #8	2	9006634	20
SCR. PHIL HD PAN #8-32 X.284	2	9006026-1	19
CLAMP CAPACITOR	2	C-MD-7417406-0-0	18
CAPACITOR 24 KUF 50V	1	7010702	17
BROMMET CATERPILLAR	1/4	9007035	16
BRACKET CAPACITOR	1	B-1A-7417403-1-0	15
BROMMET RUBBER	2	9007071	14
CAPACITOR 3700UF (40V 65V)	1	7012780-0-0	13
CLAMP CAPACITOR	1	9009052	12
SCR. PHIL PAN #8-32 X.25L	2	9006020-1	11
NUT KEPS #8-32	2	9006668	10
PLATE CAPACITOR CONN SIDE	1	D-1A-7417017-0-0	9
BOARD, HAR. DISTR. H777	1	D-CS-5415-0-1	8
HARNESS, 40 WDS PWS PWA DST	1	D-1A-701560-0-0	7
WHSN #375 O.D. X.137 I.D. D36	2	9006660	6
HARNESS HT17 45V REG	1	D-1A-701415-0-0	5
SCR. PHIL HD PAN #8-32 X.31L	2	9006021-1	4
SCR. PHIL HD PAN #8-32 X.30L	2	9006024-1	3
WASHER, INT TOOTH COCK #8	2	9006633	2
H777+5V REG (REV 2 UP)	1	D-CS-5412-0-1	1

REV.	DATE	BY	CHKD	APP'D	DESCRIPTION
1	11/22/74	R. COLEMAN			ISSUE FOR MANUFACTURE
2	12/10/74	R. COLEMAN			REVISED TO ADD PARTS LIST
3	12/10/74	R. COLEMAN			REVISED TO ADD PARTS LIST
4	12/10/74	R. COLEMAN			REVISED TO ADD PARTS LIST
5	12/10/74	R. COLEMAN			REVISED TO ADD PARTS LIST
6	12/10/74	R. COLEMAN			REVISED TO ADD PARTS LIST
7	12/10/74	R. COLEMAN			REVISED TO ADD PARTS LIST
8	12/10/74	R. COLEMAN			REVISED TO ADD PARTS LIST
9	12/10/74	R. COLEMAN			REVISED TO ADD PARTS LIST
10	12/10/74	R. COLEMAN			REVISED TO ADD PARTS LIST
11	12/10/74	R. COLEMAN			REVISED TO ADD PARTS LIST
12	12/10/74	R. COLEMAN			REVISED TO ADD PARTS LIST
13	12/10/74	R. COLEMAN			REVISED TO ADD PARTS LIST
14	12/10/74	R. COLEMAN			REVISED TO ADD PARTS LIST
15	12/10/74	R. COLEMAN			REVISED TO ADD PARTS LIST
16	12/10/74	R. COLEMAN			REVISED TO ADD PARTS LIST
17	12/10/74	R. COLEMAN			REVISED TO ADD PARTS LIST
18	12/10/74	R. COLEMAN			REVISED TO ADD PARTS LIST
19	12/10/74	R. COLEMAN			REVISED TO ADD PARTS LIST
20	12/10/74	R. COLEMAN			REVISED TO ADD PARTS LIST
21	12/10/74	R. COLEMAN			REVISED TO ADD PARTS LIST
22	12/10/74	R. COLEMAN			REVISED TO ADD PARTS LIST
23	12/10/74	R. COLEMAN			REVISED TO ADD PARTS LIST
24	12/10/74	R. COLEMAN			REVISED TO ADD PARTS LIST
25	12/10/74	R. COLEMAN			REVISED TO ADD PARTS LIST
26	12/10/74	R. COLEMAN			REVISED TO ADD PARTS LIST
27	12/10/74	R. COLEMAN			REVISED TO ADD PARTS LIST
28	12/10/74	R. COLEMAN			REVISED TO ADD PARTS LIST
29	12/10/74	R. COLEMAN			REVISED TO ADD PARTS LIST
30	12/10/74	R. COLEMAN			REVISED TO ADD PARTS LIST
31	12/10/74	R. COLEMAN			REVISED TO ADD PARTS LIST
32	12/10/74	R. COLEMAN			REVISED TO ADD PARTS LIST

UNLESS OTHERWISE SPECIFIED DIMENSIONS ARE IN INCHES

ANGLES	CLASS OF ACCURACY	TOLERANCES				
MIN	MAX	FR	FL	HL	HL	HL
30°	14°	±.005	±.005	±.005	±.005	±.005
45°	14°	±.005	±.005	±.005	±.005	±.005
60°	14°	±.005	±.005	±.005	±.005	±.005
75°	14°	±.005	±.005	±.005	±.005	±.005
90°	14°	±.005	±.005	±.005	±.005	±.005
105°	14°	±.005	±.005	±.005	±.005	±.005
120°	14°	±.005	±.005	±.005	±.005	±.005
135°	14°	±.005	±.005	±.005	±.005	±.005
150°	14°	±.005	±.005	±.005	±.005	±.005
165°	14°	±.005	±.005	±.005	±.005	±.005
180°	14°	±.005	±.005	±.005	±.005	±.005

THIRD ANGLE PROJECTION

DO NOT SCALE DRG

NEAREST HIGHER ASSY.

MATERIAL: D-88-N777-0-0

SCALE: 1" = 1"

SHEET 1 OF 1

QUANTITY & VARIATION

DESCRIPTION: H777+5V REG (REV 2 UP)

DWG. PART NO.: D-CS-5412-0-1

ITEM NO.: 1

TITLE: +5V REG ASSY

DATE: 12/10/74

BY: R. COLEMAN

CHKD: R. COLEMAN

APP'D: R. COLEMAN

PROJ. ENG: R. COLEMAN

PROJ. MGR: R. COLEMAN

REV. E

DIGITAL EQUIPMENT CORPORATION MAYNARD, MASSACHUSETTS					QUANTITY/VARIATION																
PARTS LIST																					
MADE BY S. ROCHA		CHECKED D. HEALY		SECTION 1																	
DATE 29 JUL 76		DATE 2 AUG 76		ISSUED SECT. 1																	
ENG R. COURTMACHE		PROD R. BARRY																			
DATE 13 SEP 76		DATE 13 SEP 76																			
ITEM NO.	DWG NO. / PART NO.	DESCRIPTION																			
1	D-CS-5412667-0-1	H777 +5V REG (REV & UP)				1															
2	9006633	WASHER, INT TOOTH LOCK #6				4															
3	9006025-01	SCR PHIL HD PAN #6-32 x .62L				2															
4	9006023-01	SCR PHIL HD PAN #6-32 x .44L				2															
5	D-IA-7011415-0-0	HARNESS H777 +5V REG				1															
6	9006660	WASH, .375 O.D. x .137 I.D. x .036				2															
7	D-IA-7011560-0-0	HARNESS BD MOS REG PWR DIST				1															
8	D-CS-5411586-0-1	BOARD, PWR DISTR. H777				1															
9	D-IA-7417017-0-0	PLATE, CAPACITOR CONN SIDE				1															
10	9008185	NUT KEPS #6-32				2															
11	9006020-1	SCR PHIL PAN HD #6-32 x .25L				2															
12	9009052	CLAMP CAPACITOR				1															
13	1012740-00	CAPACITOR 3900uf 16.0V (65)				1															
14	9007017	GROMMET RUBBER				2															
15	E-IA-7413743-1-0	BRACKET CAPACITOR				1															
16	9007035	GROMMET CATERPILLAR				A/R															
17	1010702	CAPACITOR 24Kuf 50V				2															
18	C-MD-7417408-0-0	CLAMP CAPACITOR				1															
19	9009836-1	SCR PHIL HD TRUSS #8-32 x .38L				2															
20	9006634	WASHER INT TOOTH LOCK #8				2															
21	9008258	SPACER HEX #8-32 x 1.375				2															
22	1612584	CHOKE				1															
TITLE		ASSY NO.		SIZE CODE		NUMBER		REV.		ECO NO.											
+5V REG ASSY		D-AD-7012909-0-0		A PL		7012909-0-0		E		7012909-0-0 ML003											
		SHEET 1 OF 2		DIST.																	

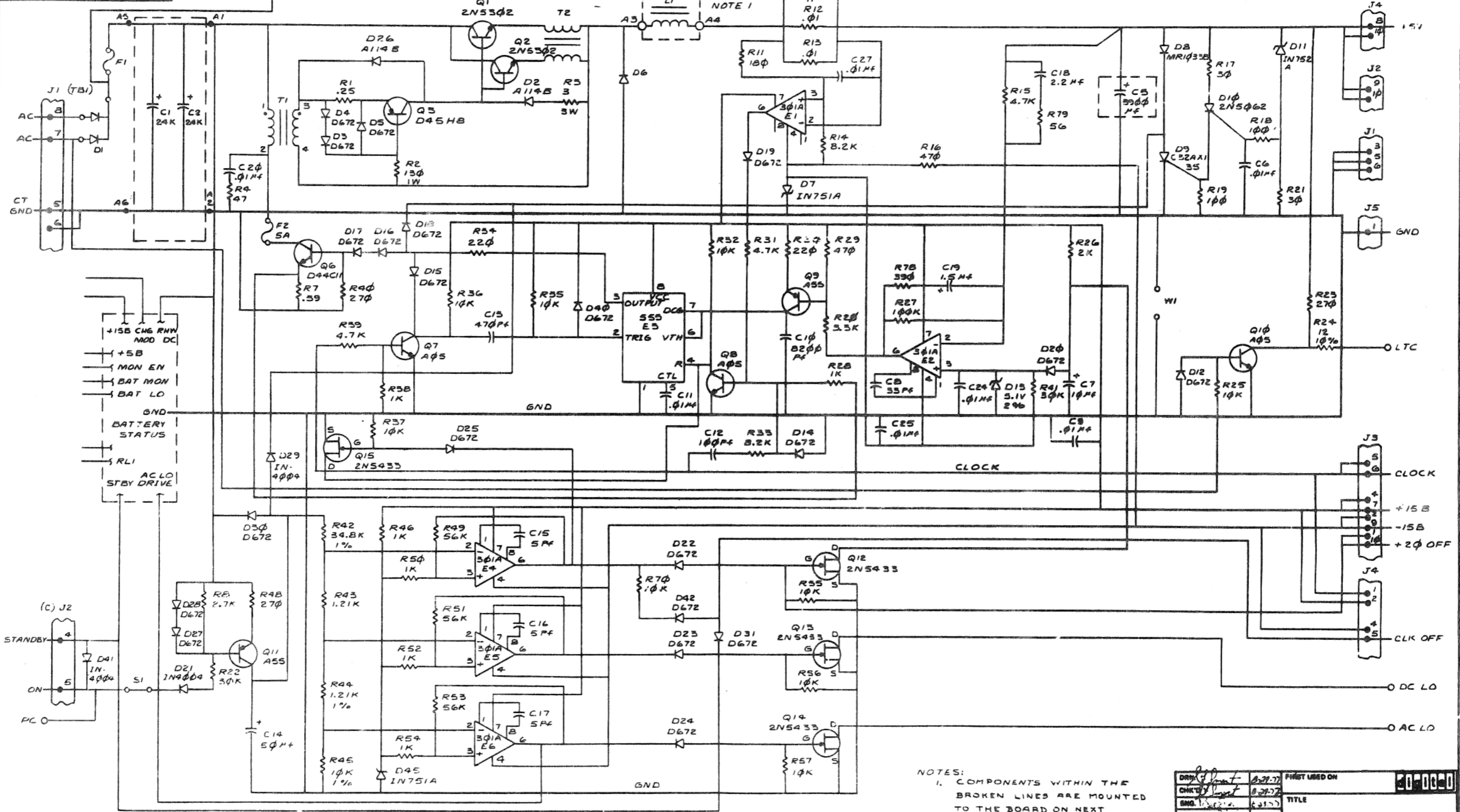
DEC FORM DEC 16 (325)-1031-N870
DRA 110

DIGITAL EQUIPMENT CORPORATION MAYNARD, MASSACHUSETTS					QUANTITY/VARIATION																
PARTS LIST																					
MADE BY S. ROCHA		CHECKED D. HEALY		SECTION 1																	
DATE 29 JUL 76		DATE 2 AUG 76		ISSUED SECT. 1																	
ENG R. COURTMACHE		PROD R. BARRY																			
DATE 13 SEP 76		DATE 13 SEP 76																			
ITEM NO.	DWG NO. / PART NO.	DESCRIPTION																			
23	B-IA-7011801-0-0	JUMPER (RED)				1															
24	B-IA-7011802-0-0	JUMPER (BLK)				1															
25	B-IA-7011800-0-0	JUMPER (GRN)				2															
26	9006563	NUT KEPS #8-32				2															
27	9006707	WASHER NYLON #6				2															
28	9000039-07	SCR, FLAT HD #6-32 x .25				5															
29	A-DC-7416911-0-0	DECAL, BATT BACKUP				1															
30	B-IA-7011801-0-1	JUMPER, RED				1															
31	B-IA-7011802-0-1	JUMPER, BLK				1															
32	9009624	BUMPER				1															
33	9009255-00	LABEL				1															
34	9007031	CABLE TIE				2															
35	9006071-01	SCR PAN HD #10-32 x .37				4															
36	9006636	WASHER LOCK INT .380 OD x .200 ID x .022THK				4															
37	9006637	SCR, SEMS, SLOTTED BINDER HD #10-32 x 5/16				2															
TITLE		ASSY NO.		SIZE CODE		NUMBER		REV.		ECO NO.											
+5V REG ASSY		D-AD-7012909-0-0		A PL		7012909-0-0		E		7012909-0-0 ML003											
		SHEET 2 OF 2		DIST.																	

DEC FORM DEC 16 (325)-1031-N870

352

THIS DRAWING AND SPECIFICATIONS HEREIN ARE THE PROPERTY OF DIGITAL EQUIPMENT CORPORATION AND SHALL NOT BE REPRODUCED OR COPIED OR USED IN WHOLE OR IN PART AS THE BASIS FOR THE MANUFACTURE OR SALE OF ITEMS WITHOUT WRITTEN PERMISSION. COPYRIGHT © 1977 DIGITAL EQUIPMENT CORPORATION



NOTES:
1. COMPONENTS WITHIN THE BROKEN LINES ARE MOUNTED TO THE BOARD ON NEXT HIGHER ASSY.

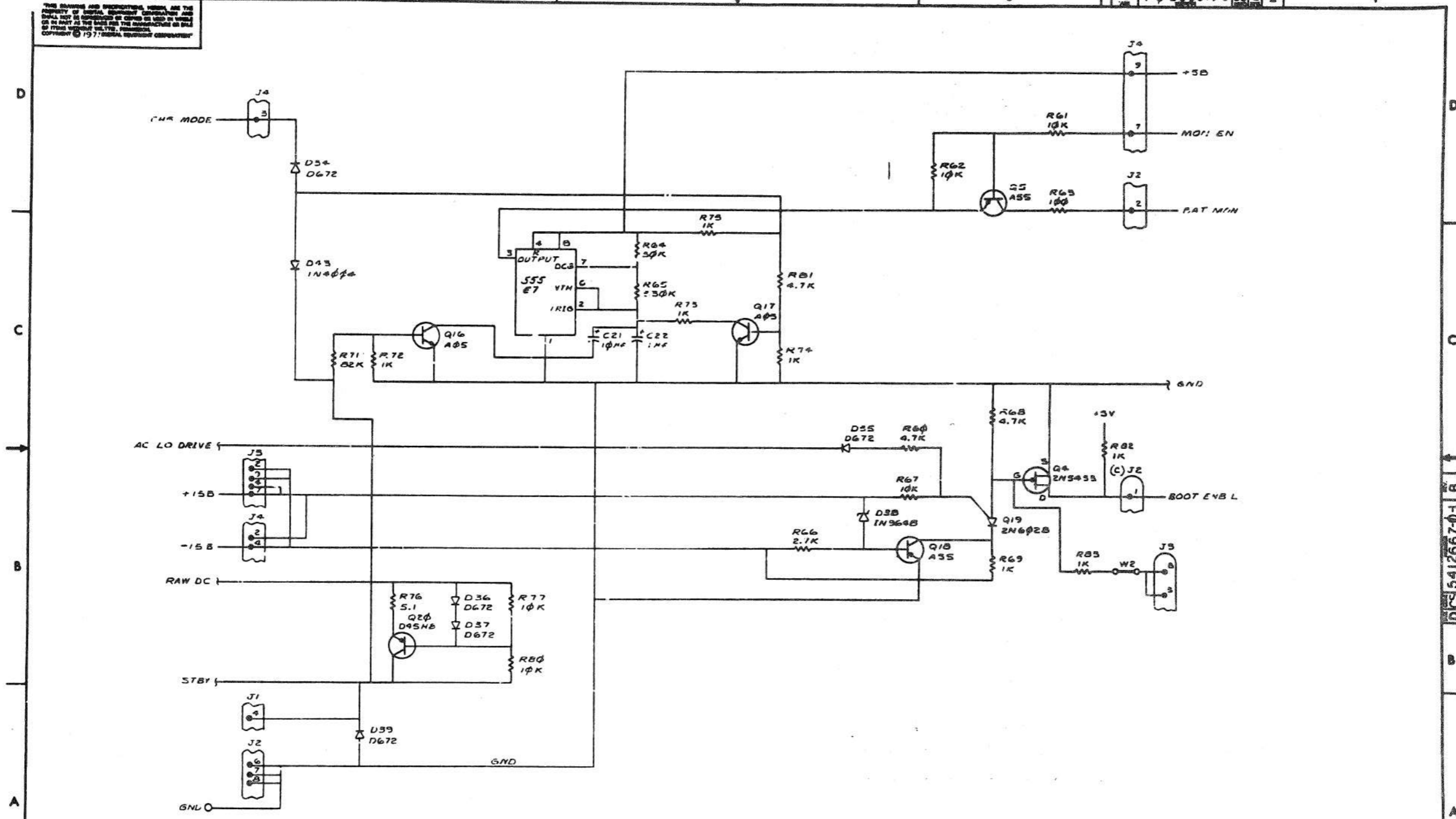
DRN	8-27-77	FIRST USED ON	
CHKD	8-27-77	TITLE	
ENG.			
PROJ. ENG.			
PROD.			

CHK	CHANGE NO.	REV.
A	5412667-00001	B
D	740K 77	
	E. GIST	

TITLE	H777	SIZE CODE	NUMBER	REV.
	+5V REGULATOR		DCS 5412667-0-1	B
SCALE		SHEET	1 OF 2	DWT.

355

THIS DRAWING AND INFORMATION HEREON ARE THE PROPERTY OF THE UNITED STATES GOVERNMENT AND SHALL NOT BE REPRODUCED OR USED IN ANY MANNER OR BY ANY MEANS FOR THE DISSEMINATION OF INFORMATION TO THE PUBLIC WITHOUT THE EXPRESS WRITTEN PERMISSION OF THE UNITED STATES GOVERNMENT.



REVISIONS		
CHK	CHANGE NO.	REV.

(BATTERY STATUS CRKT'S)

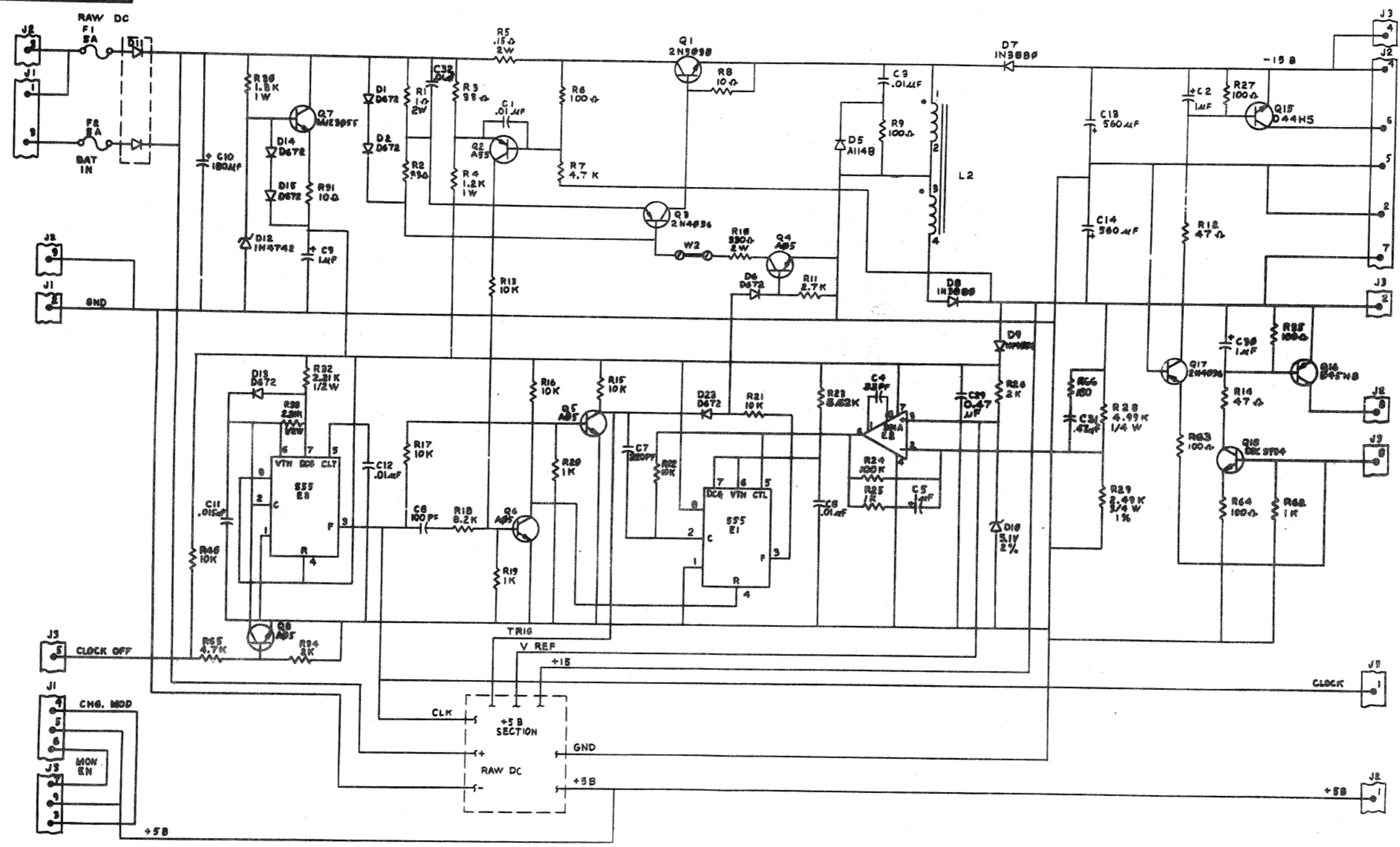
TITLE	H777	REVISION	NUMBER	REV.
	+5V REGULATOR		DCS 5412667-0-1	B
SCALE	1:1	SHEET	2 OF 2	DATE

DIGITAL EQUIPMENT CORPORATION MAYNARD, MASSACHUSETTS			QUANTITY / VARIATION												
PARTS LIST															
MADE BY	CHECKED	SECTION													
DATE	DATE	SECTION													
ENG	PROD	ISSUED SECT.													
DATE	DATE	ISSUED SECT.													
ITEM NO.	DWG NO. / PART NO.	DESCRIPTION	7012910-0	7012910-1											
1	C-IA-7011805-0-0	TRANSFORMER ASSY	1	1											
2	9006037-01	SCR PHIL PAN HD #8 - 32 x .38	2	2											
3	9006634	WASHER INT. TOOTH LOCK #8	2	2											
4	9007035	GROMMET CATERPILLAR	A/RA/R												
5	1210683-00	RELAY 12V 3P 10A	1	1											
6	9006020-01	SCR PHIL HD PAN #6-32 x .25	4	4											
7	9006033	WASHER INT. TOOTH LOCK #6	10	10											
8	9006842	SPACER HEX #6 - 32 x .31	2	2											
9	9007794-01	SCR PHIL HD PAN #6 - 32 x .69	2	2											
10	9006021-01	SCR PHIL HD PAN #6 - 32 x .31	2	2											
11	1212789	SOCKET, RELAY	1	1											
12	1210191-1	CIRCUIT BREAKER, 5A	1	1											
13	1300173	RESISTOR, 10 OHM, 10W	1	1											
14	9006966	TERMINAL TURRET INS	2	2											
15	9107430-09	WIRE #18 AWG INS TW/PR (WHT/BLK)	A/RA/R												
16	9009771-2	CLAMP (RESISTOR) 3/8 I.D. SELF ADH.	1	1											
17	1212893-00	HOLDER, FUSE 20A, 300V	1	1											
18	D-IA-7417219-0-0	BRACKET, COMPONENT	1	1											
19	1212788	BARRIER STRIP 7 POS	1	1											
20	B-IA-7414743-1-0	SHIELD, TERM.	1	1											
21	9008264	MOUNT TIE WRAP	1	1											
22	9107410-39	WIRE #18 AWG INS ORN/WHT	A/RA/R												
TITLE		ASSY NO.	SIZE	CODE	NUMBER	REV.	ECO NO.								
A/C INPUT ASSY (120V/230V)		D-AD-7012910-0-0	A	PL	7012910-0-0	L	7012910-00005								
DEC FORM DEC 16 (325)-1031-N870 DRA 110		SHEET 1 OF 3	DIST.												

DIGITAL EQUIPMENT CORPORATION MAYNARD, MASSACHUSETTS			QUANTITY / VARIATION												
PARTS LIST															
MADE BY	CHECKED	SECTION													
DATE	DATE	SECTION													
ENG	PROD	ISSUED SECT.													
DATE	DATE	ISSUED SECT.													
ITEM NO.	DWG NO. / PART NO.	DESCRIPTION	7012910-0	7012910-1											
45	C-IA-7417288-0-0	A/C CONN HARNESS	1	1											
46	9107410-83	WIRE #18 AWG INS GREY/ORN	A/RA/R												
47	9107410-86	WIRE #18 AWG INS GREY/BLU	A/RA/R												
48	9107410-69	WIRE #18 AWG INS BLU/WHT	A/RA/R												
49	9107410-96	WIRE #18 AWG INS WHT/BLU	A/RA/R												
TITLE		ASSY NO.	SIZE	CODE	NUMBER	REV.	ECO NO.								
A/C INPUT ASSY (120V/230V)		D-AD-7012910-0-0	A	PL	7012910-0-0	L	7012910-00005								
DEC FORM DEC 16 (325)-1031-N870 DRA 110		SHEET 3 OF 3	DIST.												

DIGITAL EQUIPMENT CORPORATION MAYNARD, MASSACHUSETTS			QUANTITY / VARIATION												
PARTS LIST															
MADE BY	CHECKED	SECTION													
DATE	DATE	SECTION													
ENG	PROD	ISSUED SECT.													
DATE	DATE	ISSUED SECT.													
ITEM NO.	DWG NO. / PART NO.	DESCRIPTION	7012910-0	7012910-1											
23	9107410-59	WIRE 18 AWG INS GRN/WHT	A/RA/R												
24	9107410-93	WIRE 18 AWG INS WHT/GRN	A/RA/R												
25	9007929	RING CRIMP (RED INS)	2	2											
26	9107410-95	WIRE 18 AWG INS WHT/GRN	A/RA/R												
27	9107430-08	WIRE 18 AWG INS (GRY/BLK) TW/PR	A/RA/R												
28	9007970	CONN FASTON (RED INS.)	2	2											
29	1210191-1	CIRCUIT BREAKER, 5A	1	1											
30	1210820-2	HOUSING TERM. FASTAB	4	4											
31	9107305-02	TUBING SHRINK (RED)	A/RA/R												
32	1210820-1	HOUSING SOCKET, FASTAB	4	4											
33	9107278-02	TUBING INS (RED)	A/RA/R												
34	9008020-02	SCR, PHL, FLAT HD, 6 - 32 x .19	2	2											
35	B-IA-7011797-0-0	JUMPER ASSY (BLK 2")	1	1											
36	B-IA-7011798-0-0	JUMPER ASSY (WHT 2")	1	1											
37	9007786	NUT #10 - 32	4	4											
38	9007031	TIE WRAP	A/RA/R												
39	9107459-00	TUBING, SHRINK (WHT)	A/RA/R												
40	9007212	FUSE, 1A, 250V S.B.	1	1											
41	9107459-00	TUBING, SHRINK (ORN)	A/RA/R												
42	1212698-01	STRIP, FANNING (2 POSITION)	1	1											
43	9107430-16	WIRE #18 AWG INSTWP BRN, BLU	A/RA/R												
44	9006656	WASHER, FLAT	2	2											
TITLE		ASSY NO.	SIZE	CODE	NUMBER	REV.	ECO NO.								
A/C INPUT ASSY (120V/230V)		D-AD-7012910-0-0	A	PL	7012910-0-0	L	7012910-00005								
DEC FORM DEC 16 (325)-1031-N870 DRA 110		SHEET 2 OF 3	DIST.												

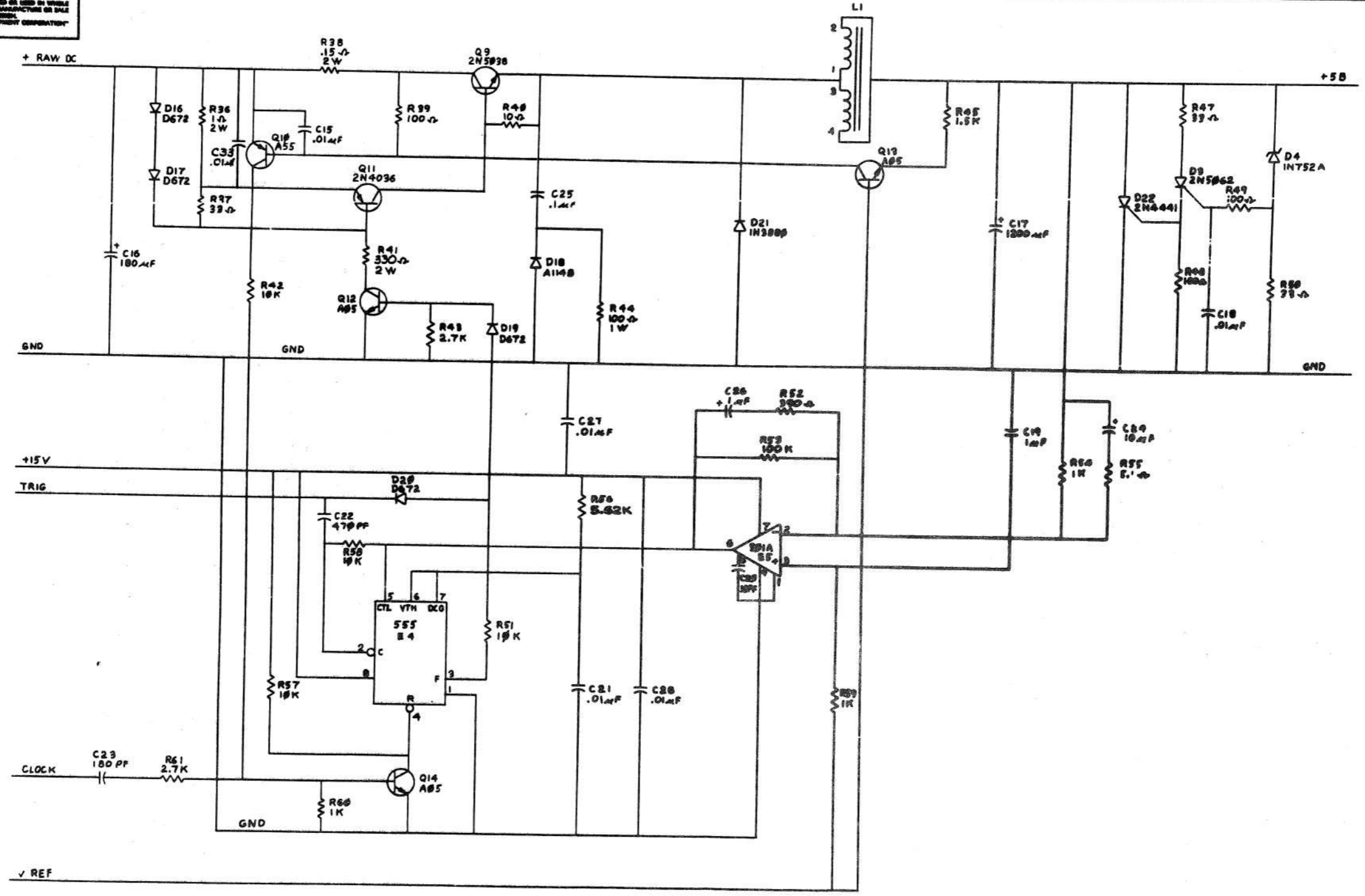
THIS DRAWING AND COMPONENTS THEREON ARE THE PROPERTY OF THE UNITED STATES GOVERNMENT AND ARE LOANED TO YOU BY THE NATIONAL BUREAU OF STANDARDS. IT IS TO BE USED ONLY FOR THE PURPOSES AND IN THE MANNER SPECIFIED BY THE CONTRACT UNDER WHICH IT IS LOANED. IT IS TO BE RETURNED TO THE NATIONAL BUREAU OF STANDARDS AT THE END OF THE LOAN PERIOD. IT IS NOT TO BE REPRODUCED OR TRANSMITTED IN ANY FORM OR BY ANY MEANS, ELECTRONIC OR MECHANICAL, INCLUDING PHOTOCOPYING, RECORDING, OR BY ANY INFORMATION STORAGE AND RETRIEVAL SYSTEM.



REVISIONS		
CHK	CHANGE NO.	REV.

DCS 5411601-0-1 M

"THE DIMENSIONS AND SPECIFICATIONS HEREIN ARE THE PROPERTY OF DIGITAL EQUIPMENT CORPORATION AND SHALL NOT BE REPRODUCED OR COPIED OR USED IN WHOLE OR IN PART AS THE BASIS FOR THE MANUFACTURE OR SALE OF ITEMS WITHOUT WRITTEN PERMISSION. COPYRIGHT © 1977 DIGITAL EQUIPMENT CORPORATION"



REVISIONS		
CHK	CHANGE NO.	REV.

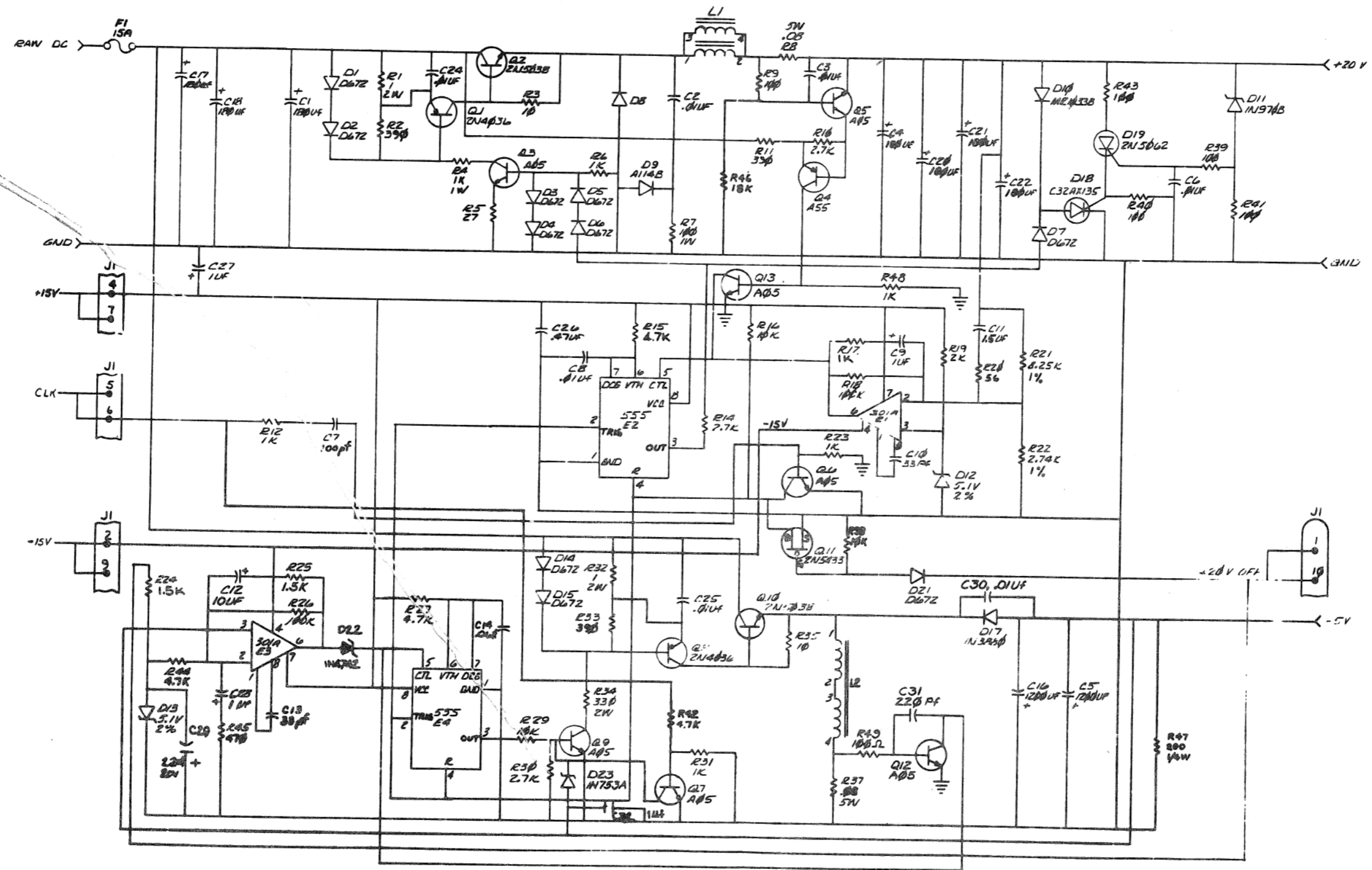
DEC FORM NO.

TITLE	NUMBER	REV.
MOS REGULATOR H777	DCS 5411601-0-1	M
SCALE 77	SHEET 3 OF 3	DIST.

363

THE DESIGN AND SPECIFICATIONS HEREIN ARE THE PROPERTY OF DIGITAL EQUIPMENT CORPORATION AND SHALL NOT BE REPRODUCED OR COPIED OR USED IN WHOLE OR IN PART AS THE BASIS FOR THE MANUFACTURE OR SALE OF ITEMS WITHOUT WRITTEN PERMISSION.
 COPYRIGHT © 1976 DIGITAL EQUIPMENT CORPORATION

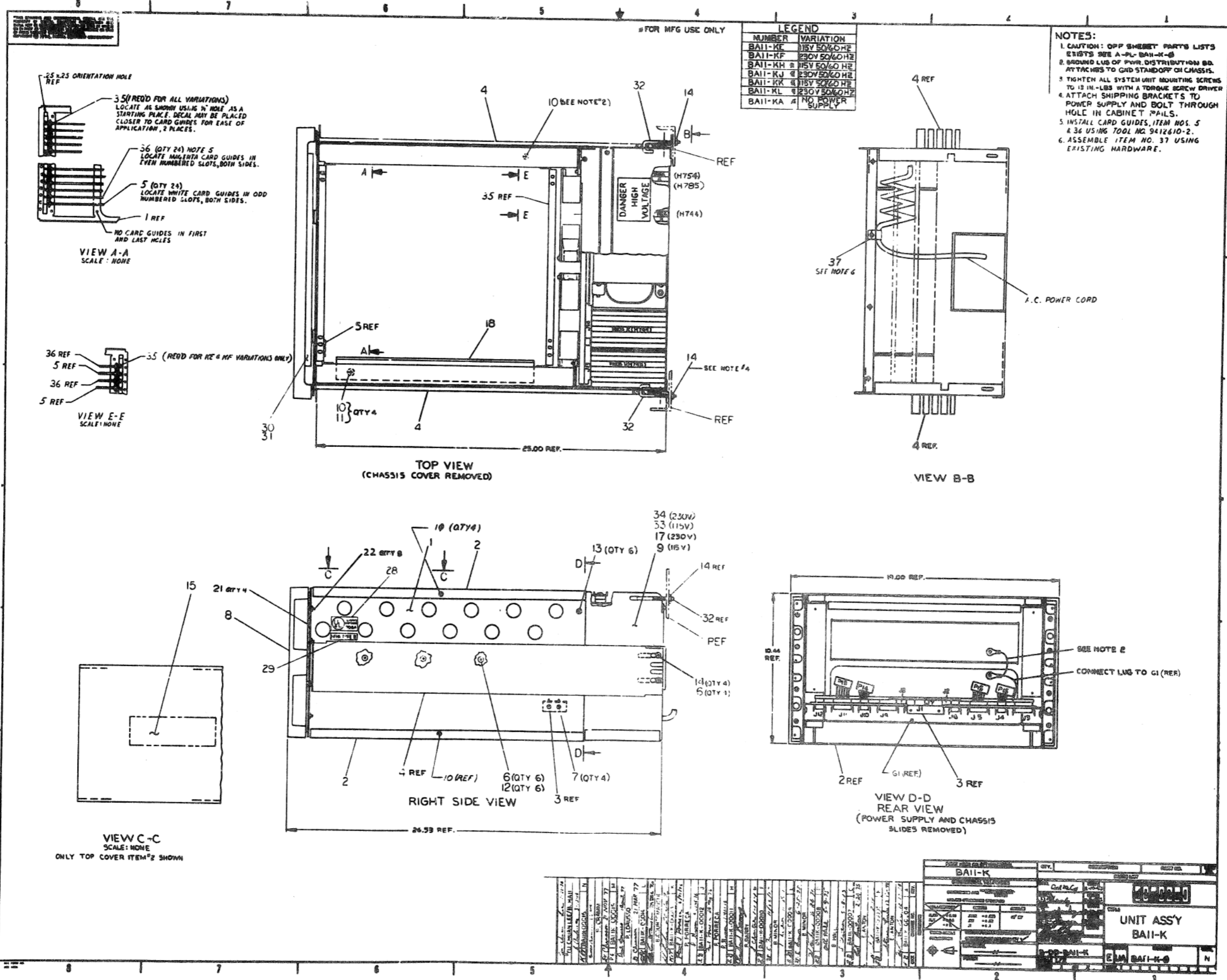
FU-6691174 SJL



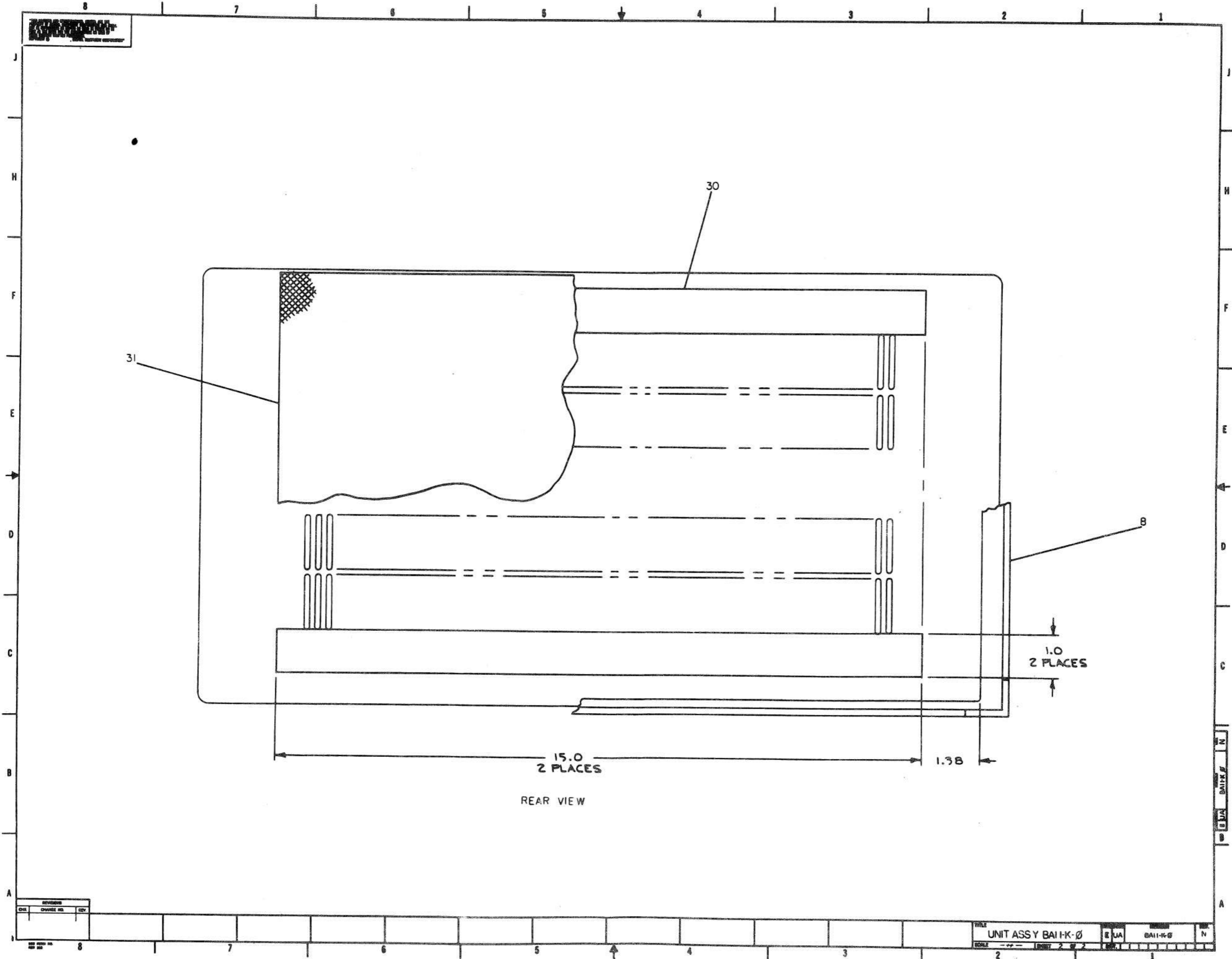
REVISIONS		
CHK	CHANGE NO.	REV.

TITLE: +20V REGULATOR/H777
 DCS 5411599-0-1
 SHEET 2 OF 2

365



ITEM NO.	DESCRIPTION	QTY	UNIT
1	SCREW	10	REF
2	SCREW	4	REF
3	SCREW	3	REF
4	CHASSIS	1	REF
5	CARD GUIDE	10	REF
6	CARD GUIDE	12	REF
7	CARD GUIDE	7	REF
8	SCREW	8	REF
9	SCREW	9	REF
10	SCREW	10	REF
11	SCREW	11	REF
12	SCREW	12	REF
13	SCREW	6	REF
14	SCREW	4	REF
15	SCREW	4	REF
16	SCREW	5	REF
17	SCREW	17	REF
18	SCREW	18	REF
19	SCREW	19	REF
20	SCREW	20	REF
21	SCREW	4	REF
22	SCREW	8	REF
23	SCREW	23	REF
24	SCREW	24	REF
25	SCREW	25	REF
26	SCREW	26	REF
27	SCREW	27	REF
28	SCREW	28	REF
29	SCREW	29	REF
30	SCREW	30	REF
31	SCREW	31	REF
32	SCREW	32	REF
33	SCREW	33	REF
34	SCREW	34	REF
35	SCREW	35	REF
36	SCREW	36	REF
37	SCREW	37	REF



REAR VIEW

1.0
2 PLACES

15.0
2 PLACES

1.38

REVISIONS		
NO.	CHANGE NO.	REV.

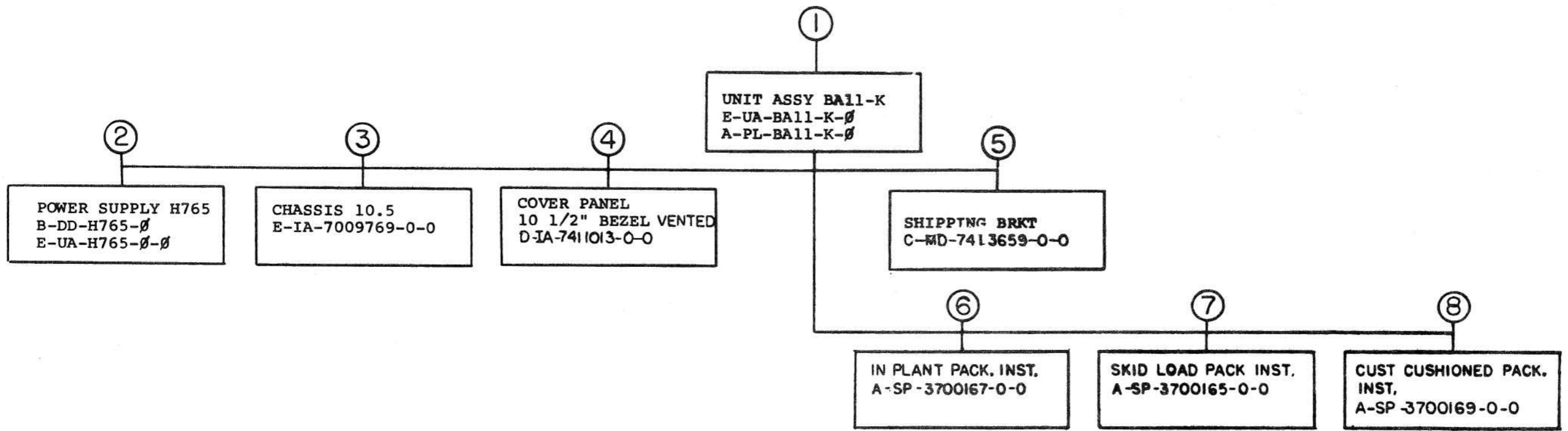
TITLE	UNIT ASSY BAI-K-Ø	DESIGNER	EUA	DATE	BAI-K-Ø	REV.	N
SCALE	1:1	QUANTITY	2 OF 2				

DIGITAL EQUIPMENT CORPORATION MAYNARD, MASSACHUSETTS				QUANTITY / VARIATION										
PARTS LIST				BALL-KE	BALL-KF	BALL-KH	BALL-KJ	BALL-KK	BALL-KL	BALL-KA				
MADE BY BILL BLODGET		CHECKED D. HEALY		SECTION										
DATE 6/26/74		DATE 6/27/74		1										
ENG <i>P. E. Janson</i>		PROD <i>Plant Janson</i>		ISSUED SECT.										
DATE 8-23-74		DATE 8/23/74		1										
ITEM NO.	DWG NO. / PART NO.	DESCRIPTION		BALL-KE	BALL-KF	BALL-KH	BALL-KJ	BALL-KK	BALL-KL	BALL-KA				
1	E-IA-7009769-0-0	CHASSIS 10.5		1	1	1	1	1	1	1				
2	D-IA-7009768-0-0	COVER, CHASSIS		2	2	-	-	-	-	-				
3	D-CS-5410864-0-1	POWER DISTRIBUTION BOARD		REF	REF	REF	REF	REF	REF	REF				
4	D-PS-1211825-0-0	SLIDE, 3 POS TILT		1pr	1pr	-	-	-	-	-				
5	D-PS-1212405-0	CARD GUIDE, SINGLE		24	24	24	24	24	24	24				
6	9006071-3	SCREW, PHL TRUSS HD #10-32 X .38		10	10	-	-	-	-	-				
7	9006020-2	SCREW, PHL FLAT HD #6-32 X .25		4	4	4	4	4	4	4				
8	D-IA-7411013-0-0	COVER, PANEL 10 1/2 BEZEL (SNAP-ON VENTED)		1	1	-	-	-	-	-				
9	B-DD-H765-A	POWER SUPPLY H765-A 115V 50/60 HZ		1	-	1	-	-	-	-				
10	9006020-3	SCREW, PHL. TRUSS HD #6-32 X .25		9	9	5	5	5	5	5				
11	9006633	WASHER INTERNAL TOOTH LOCK #6		4	4	4	4	4	4	4				
12	9007651	WASHER EXTERNAL TOOTH #10		6	6	-	-	-	-	-				
13	9009599	SCREW, PHL FLAT HD (SPECIAL)		6	6	6	6	6	6	6				
14	9006565	NUT, KEPS. #10-32		6	6	-	-	-	-	-				
15	DEC-3-(374)-1825-N1174	STICKER, "CONFIGURATION"		1	1	-	-	-	-	-				
16	D-IA-7010059-0-0	SHIPPING BRKT. ASSY		1	1	-	-	-	-	-				
17	B-DD-H765-B	POWER SUPPLY H765-B, 230V 50/60 HZ		-	1	-	1	-	-	-				
18	D-MD-7412184-0-0	CABLE TROUGH CHASSIS		-	-	1	1	1	1	1				
19	9008408-1	SCR, PH. HD FLT #6-32 X .25		1	1	5	5	-	-	-				
20	D-UA-BC11A-10-0	UNIBUS CABLE, 10 FT		1	1	-	-	-	-	-				
21	1209224	LATCH MOLDING		4	4	-	-	-	-	-				
22	9008007-2	SCR PH HD FLT #10-32 X .25		8	8	-	-	-	-	-				
TITLE UNIT ASSY BALL-K				ASSY NO. E-UA-Ball-K-0		SIZE CODE A PL		NUMBER BALL-K-0		REV. N		ECO NO.		
				SHEET 1 OF 2		DIST.								

DEC FORM DEC 16-(325)-1031-N870
DRA 170

DIGITAL EQUIPMENT CORPORATION MAYNARD, MASSACHUSETTS			QUANTITY / VARIATION												
PARTS LIST			BALL-KE	BALL-KF	BALL-KH	BALL-KJ	BALL-KK	BALL-KL	BALL-KA						
MADE BY BILL BLODGET DATE 6/26/74		CHECKED D. HEALY DATE 6/27/74		SECTION 1											
ENG P. E. JANSON DATE 8-23-74		PROD W. LUCAS DATE 8-23-74		ISSUED SECT. 1											
ITEM NO.	DWG NO. / PART NO.	DESCRIPTION													
23	A-SP-3700167-0-0	IN PLANT PACK. INST.	REF	REF	REF	REF	REF	REF	REF						
24	A-SP-3700165-0-0	SKID LOAD PACK INST.	REF	REF	REF	REF	REF	REF	REF						
25	A-SP-3700169-0-0	CUST. CUSHIONED PACK. INST.	REF	REF	REF	REF	REF	REF	REF						
26	A-SP-BALL-K-6	BALL-K BASIC CHECKOUT AND ACCEPTANCE PROCEDURE	REF	REF	REF	REF	REF	REF	REF						
27	A-SP-BALL-K-7	BALL-K BASIC ASSEMBLY PROCEDURE	REF	REF	REF	REF	REF	REF	REF						
28	A-DC-5309414-0	DECAL, UL	1	1	-	-	-	-	-						
29	A-DC-5309413-0	DECAL, NFPA	1	1	-	-	-	-	-						
30	I211336-02	TAPE	1	1	-	-	-	-	-						
31	I211255-0-0	PRE FILTER	1	1	-	-	-	-	-						
32	C-MD-7413659-0-0	SHIPPING BRACKET	2	2	-	-	-	-	-						
33	B-DD-H765-C	POWER SUPPLY H765-C H5VAC 50/60HZ NO H75A	-	-	-	-	1	-	-						
34	B-DD-H765-D	POWER SUPPLY H765-D 230VAC 50/60HZ NO H75A	-	-	-	-	-	1	-						
35	A-PS-3613281-00	DECAL, ADHESIVE BACKED, BALL-K	2	2	1	1	1	1	1						
36	D-PS-1212405-1	CARD GUIDE, SINGLE	24	24	24	24	24	24	24						
37	9007086-00	CLAMP, CABLE	1	1	1	1	1	1	-						
TITLE UNIT ASSY BALL-K			ASSY NO. E-UA-BALL-K-Ø		SIZE CODE A PL		NUMBER BALL-K-Ø			REV. N		ECO NO.			
SHEET 2 OF 2			DIST.												

DEC FORM DEC 16--(325)--1031--N870
ORA 110



TITLE	SHEET	SIZE	CODE	NUMBER	REV
DRAWING DIRECTORY BALL-K	2 OF 4	B	DD	BALL-K	M

CUSTOMER PRINT SET		ELECTRICAL					CUSTOMER PRINT SET		ELECTRICAL						
1	MFG. SET	FIND NO.	DRAWING NO.	REV	NO OF SHT	DESCRIPTION	OPTION NO./FILE DATE	1	MFG. SET	FIND NO.	DRAWING NO.	REV	NO OF SHT	DESCRIPTION	OPTION NO./FILE DATE
X		1	E-UA-BALL-K-Ø	M	2	UNIT ASSY BALL-K									
X			A-PL-BALL-K-Ø	M	2	UNIT ASSY BALL-K PL									
			A-SP-BALL-K-6		8	BALL-K BASIC CHECKOUT AND ACCEPTANCE PROCEDURE									
			A-SP-BALL-K-7		10	BALL-K BASIC ASSEMBLY PROCEDURE									
C		2	B-DD-H765-Ø	X	5	POWER SUPPLY H765									

CUSTOMER PRINT SET CODES
 X = PRINT OF DOCUMENT INCLUDED IN PRINT SET
 C = INCLUDES ALL PRINTS INDICATED ON DOCUMENT
 S = CONFIDENTIAL AUTHORIZED SIGNATURE REQUIRED

TITLE
 DRAWING DIRECTORY BALL-K
 SHEET 3 OF 4
 SIZE CODE B DD
 NUMBER BALL-K
 REV M

CUSTOMER PRINT SET		MECHANICAL					CUSTOMER PRINT SET		MECHANICAL								
1	MFG. SET	FIND NO.	DRAWING NO.	REV	NO OF SHT	DESCRIPTION	OPTION NO./FILE DATE	1	MFG. SET	FIND NO.	DRAWING NO.	REV	NO OF SHT	DESCRIPTION	OPTION NO./FILE DATE		
		1	E-UA-BALL-K-Ø	M	2	UNIT ASSY BALL-K			X	6	A-SP-3700167-0-0	-	3	IN PLANT PACK. INST.			
			A-PL-BALL-K-Ø	M	2	UNIT ASSY BALL-K PL					A-PS-9905650-0-0	-	2	REGULAR SLOTTED CARTON			
			D-IA-7009768-0-0		1	COVER, CHASSIS					A-PS-9905335-0-0	-	2	BEZEL PROTECTOR			
			D-PS-1211825-0-0		3	SLIDE, 3 POS TILT					A-PS-9905644-0-0	-	2	REAR PROTECTOR			
			D-MD-7412184-0-0		1	CABLE, TROUGH CHASSIS					A-PS-9905323-0-0	A	2	SIDE PROTECTOR			
X			D-UA-BC11A-1Ø-Ø		1	UNIBUS, CABLE, 10 FT					A-PS-9905129-0-0	A	4	POLY BAG 20 x 13 x 40in 1-1/2 mil.			
X			B-CS-M919-Ø-1	#	1	BUS CONNECTOR M919											
X			B-CS-M929-0-1	#	1	BUS CONNECTOR M929											
			D-PS-1212405-00		1	CARD GUIDE			X	7	A-SP-3700165-0-0	-	4	SKID LOAD PACK. INST.			
			A-DC-5309414-0		1	DECAL UL					A-PS-1210568-0-0	-	2	CUSHIONED SKID			
			A-DC-5309413-0		1	DECAL NFPA					A-PS-9905445-0-0	-	2	HALF OVERLAP SLOTTED CARTON (TOP)			
			A-PS-3613281-0-0		1	DECAL					A-PS-9905419-0-0	-	2	FLANGED TUBE (BOTTOM)			
									X	8	A-SP-3700169-0-0	-	2	CUST. CUSHIONED PACK. INST.			
											A-PS-9905645-0-0	-	2	FULL TELESCOPE CAP			
											A-PS-9905642-0-0	-	2	FOAM PAD			
											A-PS-9905643-0-0	-	2	FOAM WITH CORRUGATED SIDE WALL ASSEMBLY			
		2	B-DD-H765-Ø		5	DWG DIRECTORY H765											
			E-UA-H765-Ø-Ø		2	POWER SUPPLY H765											
		3	E-IA-7009769-0-0		1	CHASSIS, 10.5											
			E-IA-7411703-0-0		1	CHASSIS, FRONT											
			E-IA-7411707-0-0		1	CHASSIS, SIDE											
			D-MD-7411706-0-0		1	BRACKET, HAT											
			D-MD-7411705-0-0		1	BRACKET, CARD GUIDE											
			C-MD-7412185-0-0		1	PLATE CABLE											
		4	D-IA-7411013-0-0		1	COVER PANEL 10 1/2 BEZEL											
		5	C-MD-7413659-0-0		1	SHIPPING BRKT											
CUSTOMER PRINT SET CODES	X = PRINT OF DOCUMENT INCLUDED IN PRINT SET C = INCLUDES ALL PRINTS INDICATED ON DOCUMENT S = CONFIDENTIAL AUTHORIZED SIGNATURE REQUIRED						TITLE	DRAWING DIRECTORY BALL-K		SIZE CODE	B DD		NUMBER	BALL-K		REV	M
								SHEET 4 OF 4									