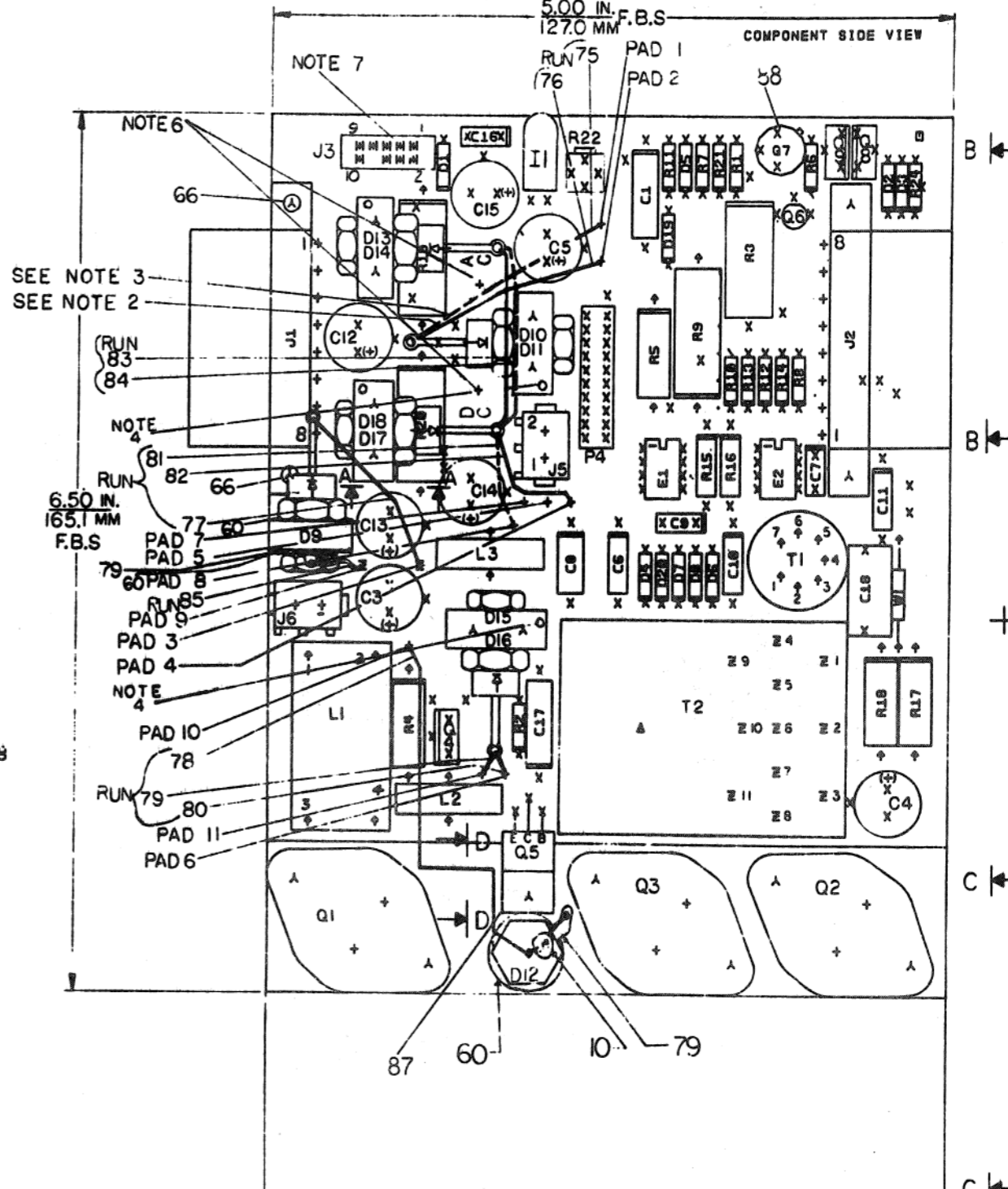
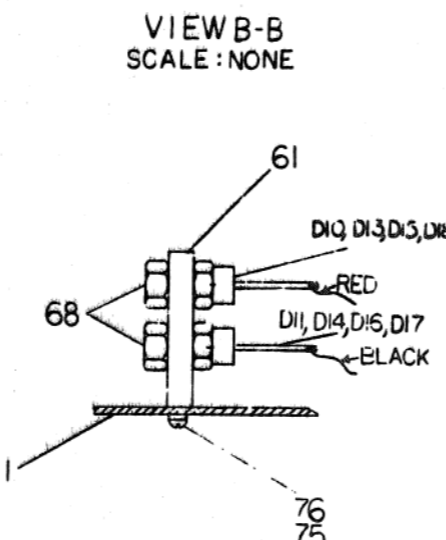
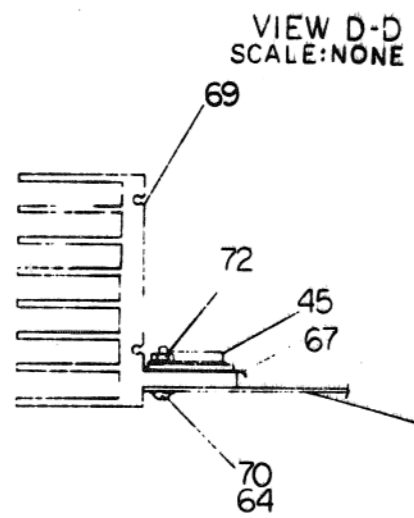
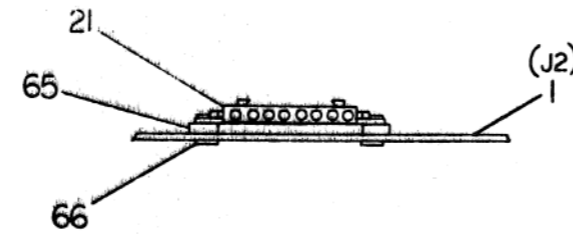
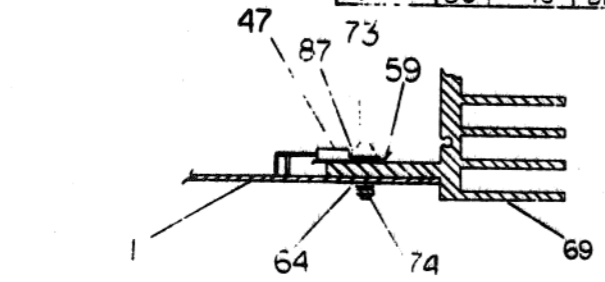


WIRE TABLE							
ITEM NC	RUN NO	DESCRIPT	FROM	TO	H785	H7850	LENGTH
77	75	18TWP BLK	D11 ANODE	PAD 1	PAD 1		4.50
	76	18 RED	D10 ANODE	PAD 2	PAD 2		4.50
	77	18 RED	D9 CATHODE	PAD 3	PAD 3		3.00
	78	18 RED	D12 CATHODE	PAD 10	PAD 10		3.75
77	79	18TWP BLK	D16 ANODE	PAD 11	PAD 11		1.50
	80	18 RED	D15 ANODE	PAD 6	PAD 6		2.00
	81	18TWP BLK	D17 CATHODE	PAD 8	PAD 7		2.75
77	82	18TWP RED	D18 CATHODE	PAD 4	PAD 5		2.75
	83	18TWP RED	D13 ANODE	D18 CATHODE	D18 CAT		3.50
	84	18TWP BLK	D14 ANODE	D17 CATHODE	D17 CAT		3.50
	85	18 BLK	D9 ANODE	PAD 9	PAD 9		3.00

8. TWIST ITEM NO. 77 AND USE PROPER COLOR.



NOTES:
 1. SEE SHEET 4 OF 4 FOR DIODE WIRING.
 2. SOLID LINE INDICATES WIRE FROM THE TOP DIODE.
 3. DASHED LINE INDICATES WIRE FROM BOTTOM DIODE.
 4. TAPPED HOLE AT TOP OF HEATSINKS MUST FACE PROPER WAY TO ALLOW INSERTION OF CARD GUIDE.
 5. TORQUE SPECIFICATIONS:
 31-32 INCH LBS. INSPECT TO MIN OF 12 TORQUE FROM SCREW HEAD
 0.5 BIN-LBS INSPECT TO MIN OF 12 TORQUE FROM SCREW HEAD
 0.9-DIA 16 IN-LBS INSPECT TO MIN OF 12 TORQUE FROM SCREW HEAD

NOTES:
 1. SOLDER ITEM NO. 55 AC, DC CABLE TO REGULATOR BOARD RED WIRE TO PTH MARKED DC. BLACK WIRE TO PTH MARKED AC.
 2. INSERT ON TO J3 ITEM NO. 58.

REV	DATE	BY	CHK'D
1	1-3-77	J. MERCURI	
2	1-3-77	J. MERCURI	
3	1-3-77	J. MERCURI	
4	1-3-77	J. MERCURI	
5	1-3-77	J. MERCURI	
6	1-3-77	J. MERCURI	
7	1-3-77	J. MERCURI	
8	1-3-77	J. MERCURI	
9	1-3-77	J. MERCURI	
10	1-3-77	J. MERCURI	

REV	DATE	BY	CHK'D
1	1-3-77	J. MERCURI	
2	1-3-77	J. MERCURI	
3	1-3-77	J. MERCURI	
4	1-3-77	J. MERCURI	
5	1-3-77	J. MERCURI	
6	1-3-77	J. MERCURI	
7	1-3-77	J. MERCURI	
8	1-3-77	J. MERCURI	
9	1-3-77	J. MERCURI	
10	1-3-77	J. MERCURI	

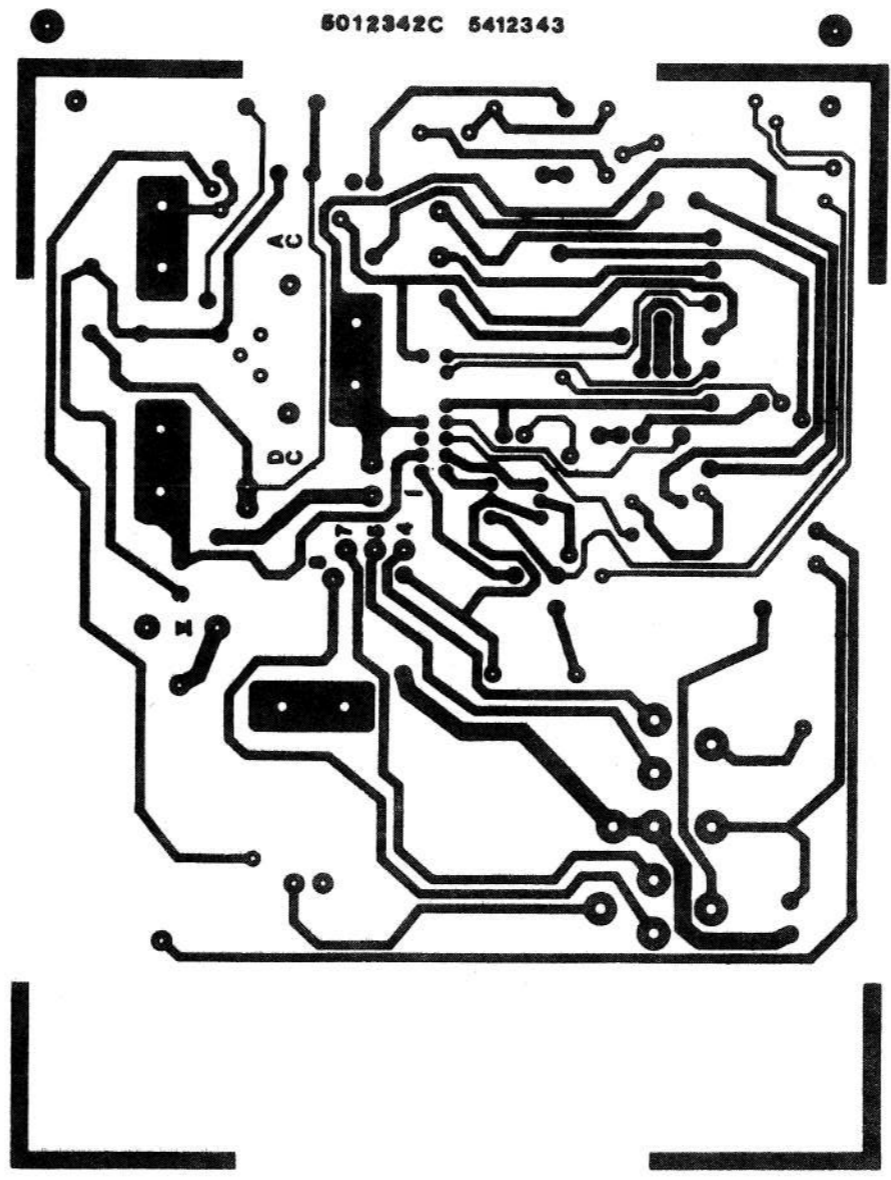
SIGNATURES	DATE	TITLE
DRN <i>[Signature]</i>	1-3-77	digital
CHK'D <i>[Signature]</i>	1-3-77	
ENG. <i>[Signature]</i>	1-3-77	
PROJ. ENG. <i>[Signature]</i>	1-3-77	
PROD. <i>[Signature]</i>	1-3-77	
SCALE 2-1	SIZE CODE	NUMBER
SHT. 1 OF 5	0 UA	5412343-0-0 F
NEXT HIGHER ASSY. B-DD-5412343-0		

DUAS412343-0-0 F

THIS DRAWING AND SPECIFICATIONS HEREIN ARE THE PROPERTY OF DIGITAL EQUIPMENT CORPORATION AND SHALL NOT BE REPRODUCED OR COPIED OR USED IN WHOLE OR IN PART AS THE BASIS FOR THE MANUFACTURE OR SALE OF ITEMS WITHOUT WRITTEN PERMISSION. COPYRIGHT © 1977 DIGITAL EQUIPMENT CORPORATION.

2 DUA 5412343-0-0

5012342C 5412343



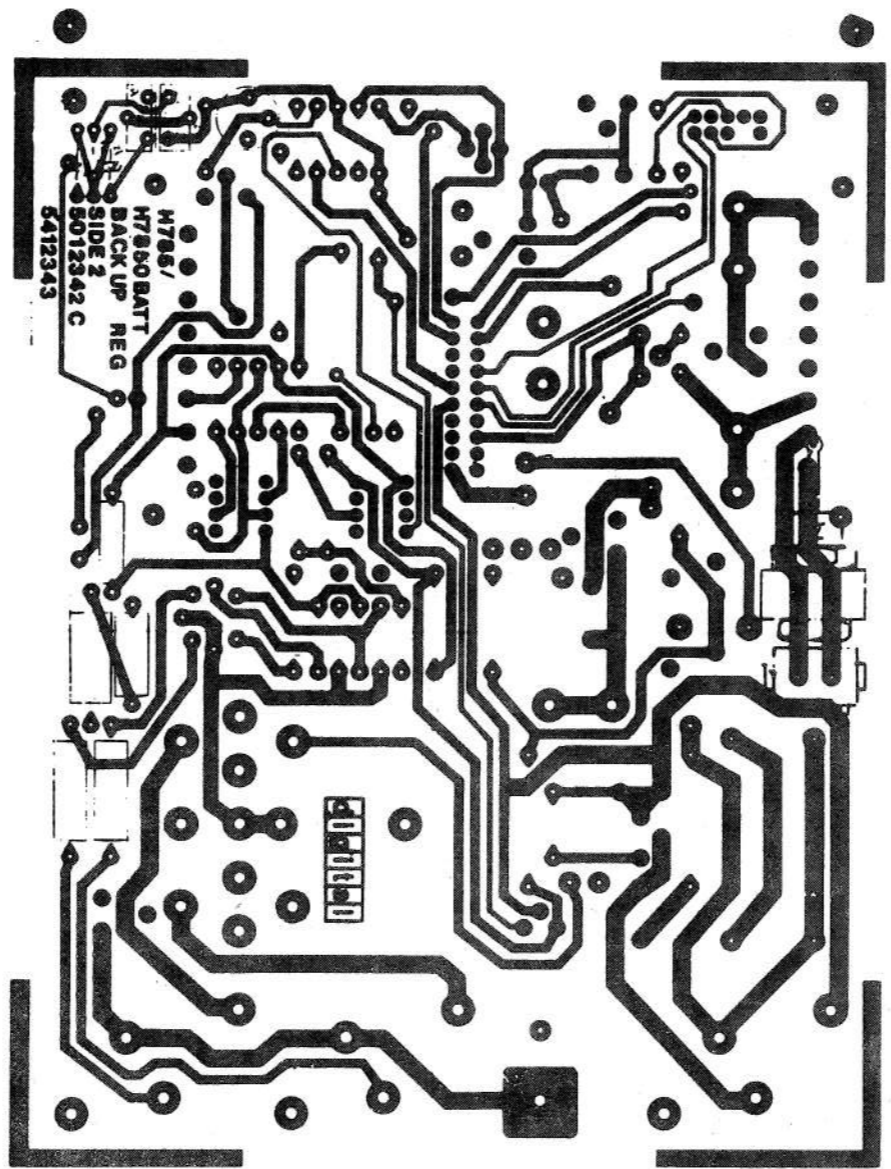
REV.	DATE	BY	CHKD.

TITLE		H785 BATTERY		SIZE CODE	NUMBER	REV.
		BACKUP REGULATOR		D LIA	5412343-0-0	F
SCALE	2/1	SHEET	2 OF 5	DIST		

DUA 5412343-0-0

451

THIS DRAWING AND SPECIFICATIONS HEREIN ARE THE PROPERTY OF DIGITAL EQUIPMENT CORPORATION AND SHALL NOT BE REPRODUCED OR COPIED OR USED IN WHOLE OR IN PART AS THE BASIS FOR THE MANUFACTURE OR SALE OF ITEMS WITHOUT WRITTEN PERMISSION. COPYRIGHT © 1977 DIGITAL EQUIPMENT CORPORATION.



H785/
H7850 BATT
BACK UP REG
SIDE 2
5012343 C
5412343

1 | 2 | D | U | A | 5412343-0-0 | F

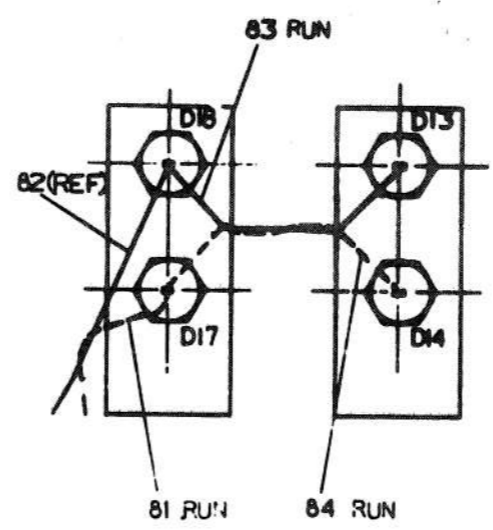
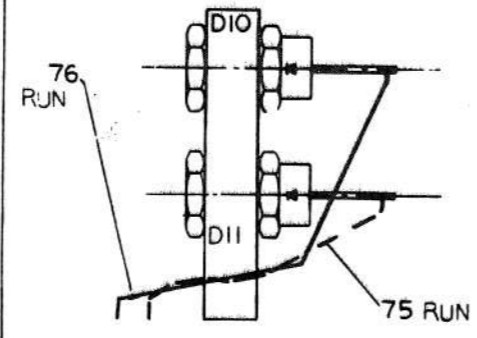
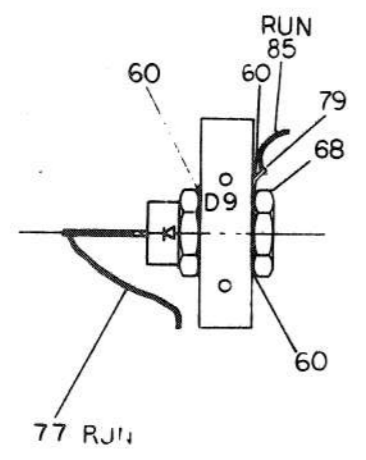
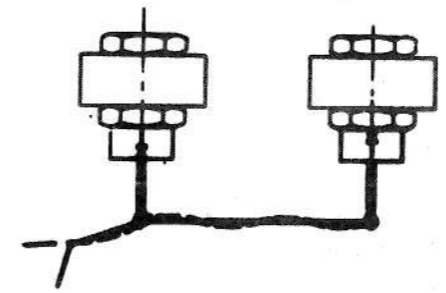
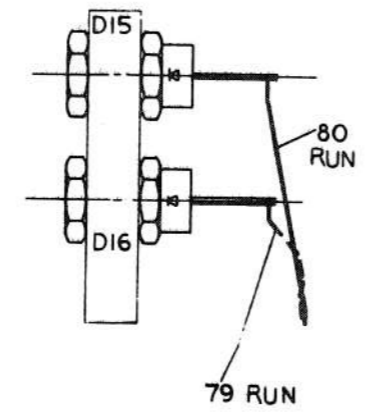
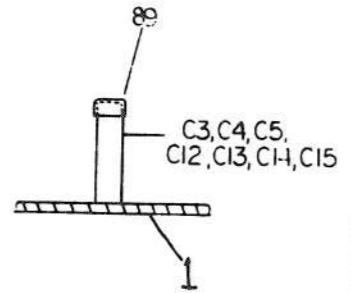
REVISIONS		
CHK	CHANGE	DATE

TITLE	H785 BATTERY BACKUP REGULATOR	SIZE CODE	D UA	NUMBER	5412343-0-0	REV.	F
SCALE	2/1	SHEET	3 OF 5	DIST.			

THIS DRAWING AND SPECIFICATIONS, HEREIN, ARE THE PROPERTY OF DIGITAL EQUIPMENT CORPORATION AND SHALL NOT BE REPRODUCED OR COPIED OR USED IN WHOLE OR IN PART AS THE BASIS FOR THE MANUFACTURE OR SALE OF ITEMS WITHOUT WRITTEN PERMISSION. COPYRIGHT © 1974, DIGITAL EQUIPMENT CORPORATION.

NOTES:
1. WIRING INFORMATION IS ON SHEET 1 OF 4.

2. DIODES TO BE ASSEMBLED TO HEAT-SINKS AND WIRED AS SHOWN BEFORE INSTALLING TO BOARD.



REVISIONS		
CHK	CHANGE NO.	REV.

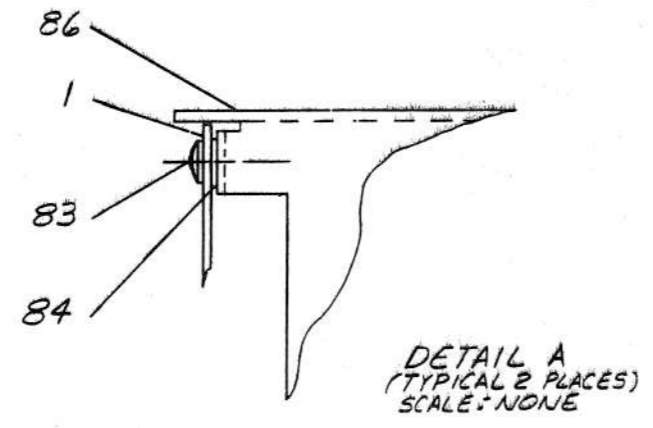
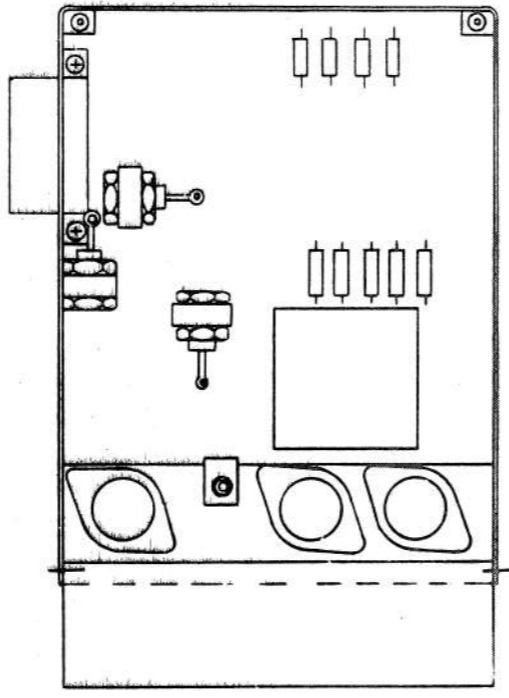
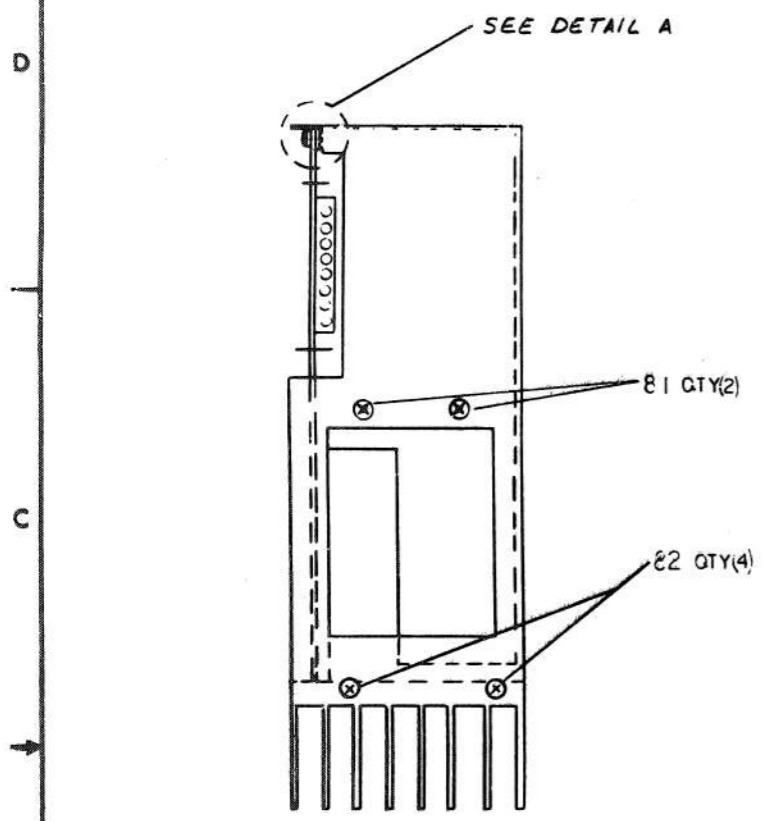
TITLE	H785 BATTERY BACKUP REGULATOR	SIZE/DWG NO.	DUA 5412343-0-0	NUMBER		REV.	F
SCALE	2/1	SHEET	4 OF 5	DIST.			

453

DUA 5412343-0-1 F

THIS DRAWING AND SPECIFICATIONS, HEREON, ARE THE PROPERTY OF DENTAL EQUIPMENT CORPORATION AND SHALL NOT BE REPRODUCED OR COPIED OR USED IN WHOLE OR IN PART AS THE BASIS FOR THE MANUFACTURE OR SALE OF ITEMS WITHOUT WRITTEN PERMISSION. COPYRIGHT © 1977 DENTAL EQUIPMENT CORPORATION

5412343-0-0 2



REVISIONS		
CHK	CHANGE NO.	REV.

TITLE	H785 BATTERY BACKUP REGULATOR	SIZE CODE	D UA	NUMBFR	5412343-0-0	REV.	F
SCALE	1:1	SHEET	5	OF	5	DIST.	

LINE ITEM	DOCUMENT NO.	PART NO.	DESCRIPTION	QTY	REFERENCE DESIGNATORS
1	D-MD-5012342-000	5012342-00	ETCH BRD 54-12343	1	
2		1002431-00	2.2MFD 35V 10% 150S S.TA	1	C10
3		1012607-02	100 MFD 50V H% 672D AL EL	3	C3-C5
4		1000042-00	1000.0 MMF 100V 5%200PPM DM15S	1	C7
5		1010646-00	.015 MFD 50V 2% M.POLYCARB	1	C8
6		1000024-00	470.0 MMF 100V 5%200PPM DM15S	1	C9
7		1001776-00	1 MFD 35V 10% 150D S.TA	2	C6,C11
8		1012607-00	560 MFD 20V H% 672D AL EL	3	C12-C14
9		1012607-01	1200 MFD 6.3V H% 672D AL EL	1	C15
10		1010621-00	.1 MFD 50V 20% 25U DISC	2	C16,C19
11		1004813-00	10 MFD 20V 10% 150D S.TA	2	C1,C17
12		1000030-00	.1 MFD 100V 20% 25U DISC	1	C18
13	BLANK				
14		1100125-00	1N 758A VZ= 10.0 5% .40W PPER S.A.V.EC	2	D2,D3
15		1105275-00	D 672 TR= 15NS PIV= 60V SP	7	D1,D4-D8,U20
16		1109440-00	1N 3880 PIV=100 I= 6A D04 SM	6	D10,D11,D13-D16
17		1113366-00	1N 3880P PIV=100 I=6A S	4	D17,D18,D9,C12
18		1105648-00	1N 4744 VZ= 15.0 10% 1W Y	1	D19
19	BLANK				
20		1211004-02	SOCKET,100 20POS EDGE MOUNT	1	P4
21		1209340-00	MATE=N=LOK RPIN,HOUSING,SKT	2	J1,J2
22		1209456-01	MATE=N=LOK SKT PCB TAB LOOSE	16	
23		1211342-02	MATE=N=LOK 2PIN PC TYPE	2	J5,J6
24		1209219-01	LAMP 6V@200MA,T1-3/4PINS#2319	1	I1
25	BLANK				
26		1300202-00	47 1/4W 5% CC	1	R2
27		1309639-00	200 5W 5% WW	1	R3
28		1312682-00	3 3W 5% CC	1	R4
29		1302950-00	1.2 K 1W 10% CC	1	R5
30		1300426-00	2.7 K 1/4W 5% CC	2	R6,R7

REVISION HISTORY			VARIATIONS FOR THIS ASSY		
CHK	ECO NO	REV	FIRST USED ON:		DIGITAL EQUIPMENT CORPORATION MAYNARD, MASSACHUSETTS
B.N	00024	F	MADE BY:	D RILORDEAU	DATE: 31-JUL-78
			CHECKED:	R PUZZO	DATE: 31-JUL-78
			DESIGN.ENG.:	J MERCURI	DATE: 31-JUL-78
			PROD.:	R FING	DATE: 31-JUL-78
			RESP.ENG.:	J MERCURI	DATE: 31-JUL-78
			TITLE		PARTS LIST
			SIZE:CODE:		DOCUMENT NUMBER
			K PL		5012343-0-0BP
			ASSY. NO.:		D-0A-5412343-0-0
			REV		3

THIS DRAWING AND SPECIFICATIONS HEREIN, ARE THE PROPERTY OF DIGITAL EQUIPMENT CORPORATION AND SHALL NOT BE REPRODUCED OR COPIED OR USED IN WHOLE OR IN PART AS THE BASIS FOR THE MANUFACTURE OR SALE OF ITEMS WITHOUT WRITTEN PERMISSION.
COPYRIGHT 1978, DIGITAL EQUIPMENT CORPORATION

LINE ITEM	DOCUMENT NO.	PART NO.	DESCRIPTION	QTY	REFERENCE DESIGNATORS
31	31	1309680-00	2.7 M 1/4W 5% CC (13-00	1	R8
32	32	1313712-00	.01 5W 3% WW (13-00	1	R9
33	33	1300365-00	1 K 1/4W 5% CC (13-00	2	R1, R11
34	34	1300229-00	100 1/4W 5% CC (13-00	1	R12
35	35	1302466-00	100 K 1/4W 5% CC (13-00	2	R13, R14
36	36	1312404-00	2.21 K 1/2W 1% PN60D-7 100PPH (13-00	2	R15, R16
37	37	1313579-00	1.5 3W 5% WW (13-00	2	R17, R18
38	38	1309855-00	300 2W 5% CC (13-00	2	R19, R20
39	39	1300479-00	10 K 1/4W 5% CC (13-00	1	R21
40	40	1310852-00	200 20% POT S	1	R22
41	41	1300391-00	1.5 K 1/4W 5% CC (13-00	1	R10
42	42	1300316-00	470 1/4W 5% CC (13-00	1	R24
43	43	BLANK		0	
44	44	BLANK		0	
45	45	1510969-00	2N 5038 NPN 140WC SI 90 50 Y	3	Q1-Q3
46	46	1510708-00	D 45HR PNP 50WT SI 60 60 Y	2	Q4, Q8
47	47	1512790-00	D 44C11 NPN 30W SI 80 40	2	Q5, Q9
48	48	1511686-00	DEC5433 FET N 350MW 10 25 1A 20U	1	Q6
49	49	1510959-00	2N 3725 NPN 3.5WC SI 50 60 P	1	Q7
50	50	BLANK		0	
51	51	1612593-00	500 UH 6A S	1	L1
52	52	1613874-00	CHOKER, 15UH 4A	2	L2, L3
53	53	1613876-00	XFMR, POWER, RATIO 1:2 7PIN S	1	T1
54	54	1613875-00	XFMR, POWER, RATIO 1:2:3 100UH	1	T2
55	55	7013690-00	CABLE 2 PIN AC DC LOW	1	
56	56	1911944-00	555CN TIMER, FUNCT. BLOCK	1	E1
57	57	1910282-00	301AN OP AMP	1	E2
58	58	7013384-1D	10 CONDUCTOR EXTENDER CABLE	1	
59	59	1213071-06	INSULATOR, RUBBER SILICONE	1	
60	60	1213071-05	INSULATOR, RUBBER THERMAL	3	
61	61	7417414-00	HEAT SINK (DUAL)	4	
62	62	7417413-00	HEAT SINK (SINGLE)	1	
63	63	9006655-00	WASHER, FLAT, .312 O.D. X .125 ID X .025 T	1	
64	64	9006656-00	WASHER, FLAT, .312 O.D. X .156 I.D. X .027	6	
65	65	9006706-00	WASHER, NYLON, FLAT #4 .375 OD X .031 THK	2	
66	66	9006745-00	EYELET, POLLED FLANGE, .120 OD X .260 LG	4	
67	67	1213071-02	INSULATOR, RUBBER SILICONE SM	3	
68	68	9006565-00	NUT, KEP, 10-32X 3/8 AF CS/	10	
69	69	1210737-04	HEAT SINK, REGULATOR	1	
70	70	9007793-04	SCREW, BIND, SLOT, 6-32X 9/16 SS/PAS	6	
71	71	9007649-00	***** THIS ITEM IS NOT USED *****	0	
72	72	9008165-00	NUT, KEP, 6-32X 1/4 AF CS/	6	
73	73	9008033-01	SCREW, PAN, PHIL, 4-40X 9/16 SS/PAS	1	
74	74	9006557-00	NUT, KEP, 4-40X 1/4 AF CS	1	
75	75	9006632-00	WASHER, LOCK, INT, .260OD X .120ID X .015 THK	8	
76	76	9006010-04	SCREW, BIND, SLOT, 4-40X 5/16 SS/PAS	8	
77	77	9107430-02	WIRE, STRND, 18AWG, IPVC (UL1429) (91-00 A/R	1	
78	78	9009185-00	JUMPER, WIRE, INSULATED, BLACK BAND	1	W1

DIGITAL EQUIPMENT CORPORATION MAYNARD, MASSACHUSETTS	TITLE PARTS LIST M785 BATTERY BACKUP REGULATOR	SIZE/ CODE K PI	DOCUMENT NUMBER 5412343-0-00P	REV F
---	--	--------------------	----------------------------------	----------

APPROVED BY 1471.51 24(2)

PARTS LIST

SHEET 3 OF 3

LINE ITEM LOCATION

PART NO.

DESCRIPTION

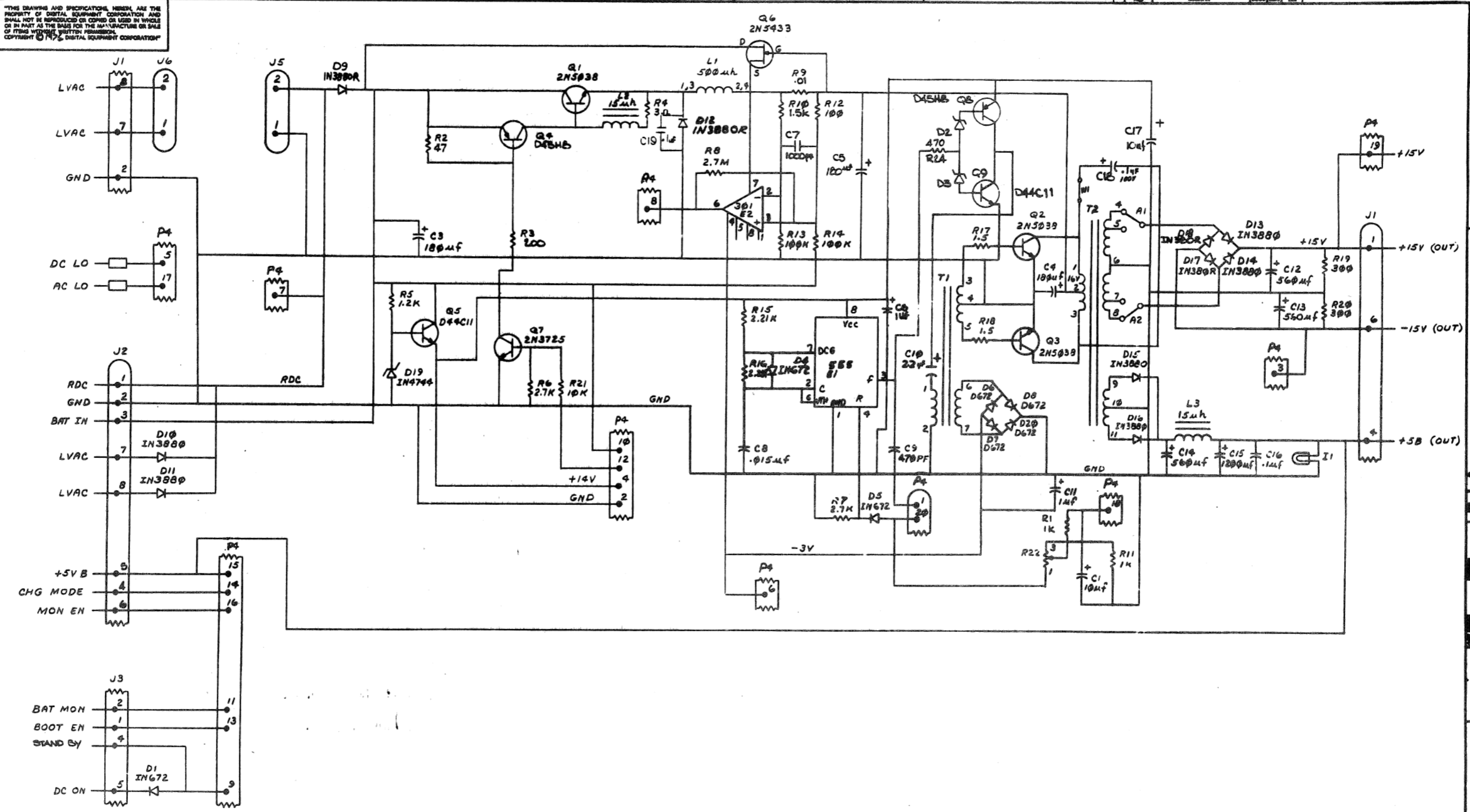
QTY REFERENCE DESIGNATORS

LINE ITEM	LOCATION	PART NO.	DESCRIPTION	QTY	REFERENCE DESIGNATORS
79	79	9008506-00	TERM LUG 1POS SOLDER, FLAT	2	
81	81	9009149-00	PIN, STAKING, P.C. BOARD, .025 X .025	2	U3
82	82	9008404-02	SCREW, FLAT, PHIL, 6-32X 5/16 SS/PAS 1000	7	
83	83	9009142-02	SCREW, PHILLIPS FLAT HEAD, SELF TAP, 4-40	4	
84	84	9008010-01	SCREW, PAN, PHIL, 4-40X 5/16 SS/PAS	7	
85	85	9008079-00	WASHER, FLAT FINER OD, 1/4	2	
86	86	9905212-00	CARTON, DIE CUT 2412 100	1	
87	87	7417410-00	REGULATOR BRACKET	1	
45	45	9009769-00	WASHER, RECTANGULAR .405X.725X.060	1	
49	49	9007201-00	TRANSIPADS #10253	1	
		9009731-03	CAP, PLASTIC	7	

1-1A-741741-00-00

DIGITAL EQUIPMENT CORPORATION MAYNARD, MASSACHUSETTS	TITLE M785 BATTERY BACKUP REGULATOR	PARTS LIST	SIZE/COLOR A PL	DOCUMENT NUMBER 5412343-00-000	REV 1
---	--	------------	--------------------	-----------------------------------	----------

THIS DRAWING AND SPECIFICATIONS HEREIN ARE THE PROPERTY OF DIGITAL EQUIPMENT CORPORATION AND SHALL NOT BE REPRODUCED OR COPIED OR USED IN WHOLE OR IN PART AS THE BASIS FOR THE MANUFACTURE OR SALE OF ITEMS WITHOUT WRITTEN PERMISSION.
 COPYRIGHT © 1976, DIGITAL EQUIPMENT CORPORATION



REV.	REV.
DESIGNER	CHK'D
DATE	DATE
BY	BY
BY	BY
BY	BY
BY	BY
BY	BY
BY	BY
BY	BY
BY	BY

DRN. J. L. L...	2-20-76	FIRST USED ON	30-0000
CHK'D J. L. L...	5-26-76	TIT. E	
ENG. G. R. B...	2-8-77	H785 BATTERY BACKUP REGULATOR	
PROJ. ENG. R. K...	2-8-77	SCALE	D CS 5412343-0-1 F
PROD. R. K...	2-8-77	SHEET	OF 1
NEXT HIGHER ASSY.		SIZE	CODE
		NUMBER	REV.

458

8

7

6

5

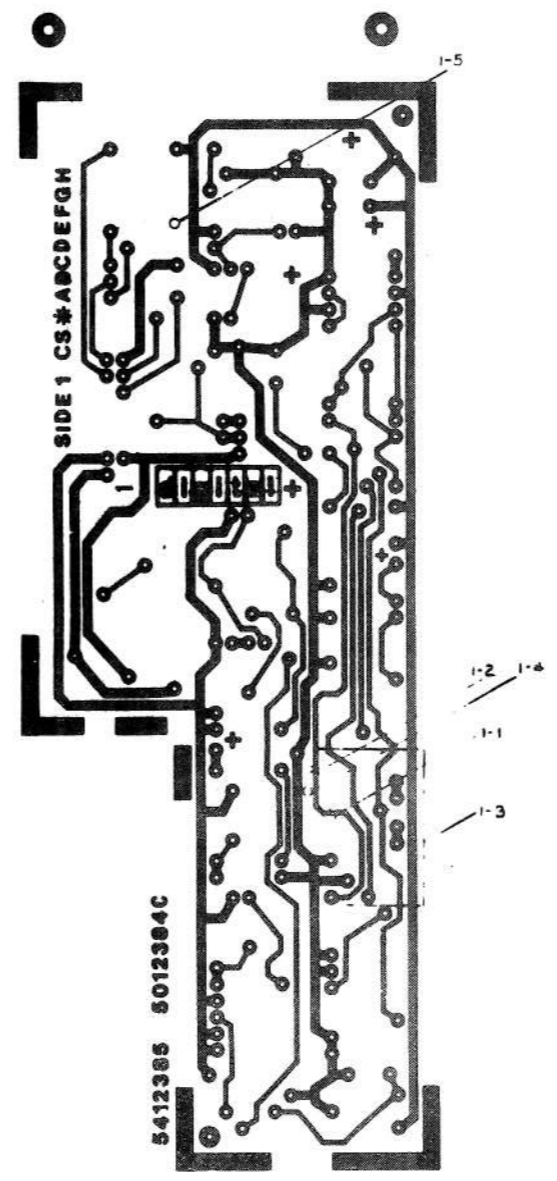
4

3

3 1/2" x 5 1/2" 5412385-0-0 DUA 2

1

"THIS DRAWING AND SPECIFICATIONS HEREIN ARE THE PROPERTY OF DIGITAL EQUIPMENT CORPORATION AND SHALL NOT BE REPRODUCED OR COPIED OR USED IN WHOLE OR IN PART AS THE BASIS FOR THE MANUFACTURE OR SALE OF ITEMS WITHOUT WRITTEN PERMISSION. COPYRIGHT © 1977 DIGITAL EQUIPMENT CORPORATION"



D

C

E

B

A

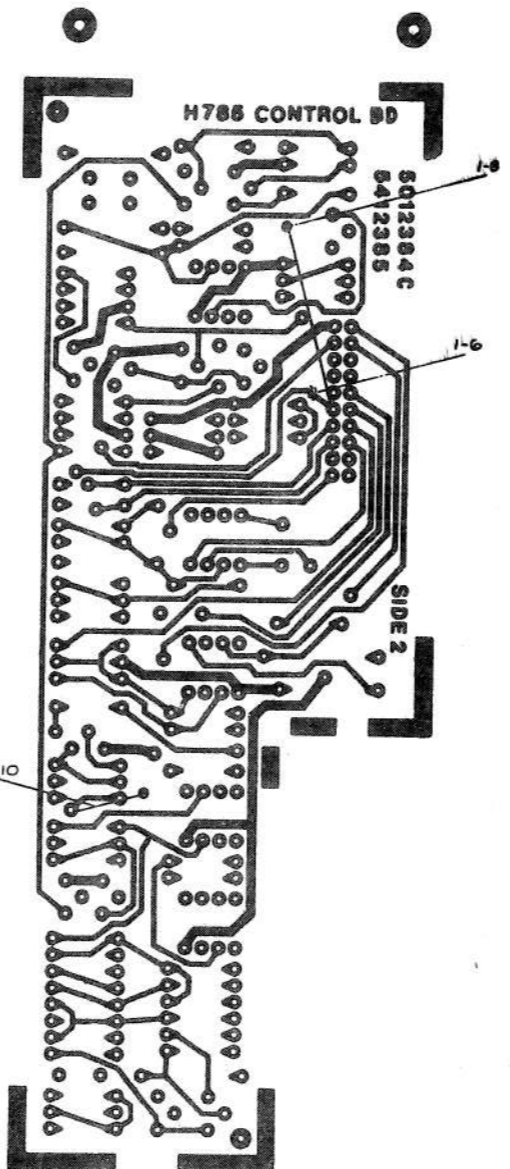
REVISIONS		
CHK	CHANGE NO	R. N.

TITLE	H785 CONTROL BD	SIZE CODE	DUA	NUMBER	5412385-0-0	REV.	E
SCALE	2/1	SHEET	2 OF 3	DIST.			

460

THIS DRAWING AND SPECIFICATIONS HEREIN ARE THE PROPERTY OF DIGITAL EQUIPMENT CORPORATION AND SHALL NOT BE REPRODUCED OR COPIED OR USED IN WHOLE OR IN PART AS THE BASIS FOR THE MANUFACTURE OR SALE OF ITEMS WITHOUT WRITTEN PERMISSION. COPYRIGHT ©1977 DIGITAL EQUIPMENT CORPORATION

DUA 5412385-0-0 2



REV.	DATE	BY	CHKD	DESCRIPTION

TITLE	H785 CONTROL BD	SIZE CODE	DUA	NUMBER	5412385-0-0	REV.	E
SCALE	2/1	SHEET	3 OF 3	DIST.			

6161

LINE	ITEM	DOCUMENT NO.	PART NO.	DESCRIPTION	QTY	REFERENCE DESIGNATORS
1	1	D-MD-5012384-0-0	5012384-00	5412385	1	
2	2		1001610-01	.01 MFD 100V OR 50V Z5U DISC/800PF MIN	4	C1,C4,C6,C13
3	3		1004813-00	10 MFD 20V 10% 150D S.TA (10-00)	1	C2
4	4		1001776-00	1 MFD 35V 10% 150D S.TA (10-00)	3	C3,C5,C11
5	5		1000061-00	8200.0 MMF 100V 10% 663UW MYLR (10-00)	1	C7
6	6		1005965-00	.47 MFD 35V 10% 150D S.TA (10-00)	2	C8,C12
7	7		1000009-00	33.0 MMF 100V 5%200PPM DM158 (10-00)	1	C9
8	8		1005306-00	6.8MFD 35V 10% 150D S.TA (10-00)	1	C14
9	9		1105275-00	D 672 TR= 15NS PIV= 60V SP	9	D1,D2,D3,D5,D6,D9,D10,D12,D13
10	10		1109988-00	1N 964B VZ= 13.0 5% .40W Y	1	D4
11	11		1102808-00	1N 752A VZ= 5.6 5% .40W P	2	D11,D15
12	12		1110968-00	2N 5062 SCR@100V I=.8A T092	1	D14
13	13		1110713-00	SZ710910 VZ= 5.1 2% M	1	D7
14	14		1114913-00	VZ= 18.0 10% 1W	1	D16
15	15		1300398-00	1.8 K 1/4W 5% CC (13-00)	2	R32,R38
16	16		1300479-00	10 K 1/4W 5% CC (13-00)	11	R1,R13,R18,R19,R20,R21,R28, CONT R31,R42-R44
17	17		1300229-00	100 1/4W 5% CC (13-00)	5	R3,R5,R25,R29,R45
18	18		1301322-00	180 1/4W 5% CC (13-00)	1	R4
19	19		1302177-00	47 K 1/4W 5% CC (13-00)	1	R6
20	20		1302394-00	30 K 1/4W 5% CC (13-00)	1	R7
21	21		1302091-00	330 K 1/4W 5% CC (13-00)	1	R8
22	22		1300365-00	1 K 1/4W 5% CC (13-00)	6	R2,R9,R12,R14,R37,R40
23	23		1300426-00	2.7 K 1/4W 5% CC (13-00)	1	R16
24	24		1302092-00	220 K 1/4W 5% CC (13-00)	1	R15
25	25		1301423-00	6.8 K 1/4W 5% CC (13-00)	1	R17
26	26		1302871-00	1.21 K 1/4W 1% RN55D-F 100PPM (13-00)	1	R35
27	27		1302955-00	750 1/4W 1% RN55D-F 100PPM (13-00)	1	R34
28	28		1303312-00	10.0 K 1/4W 1% RN55D-F 100PPM (13-00)	1	R36
29	29		1302466-00	100 K 1/4W 5% CC (13-00)	3	R22,R39,R41

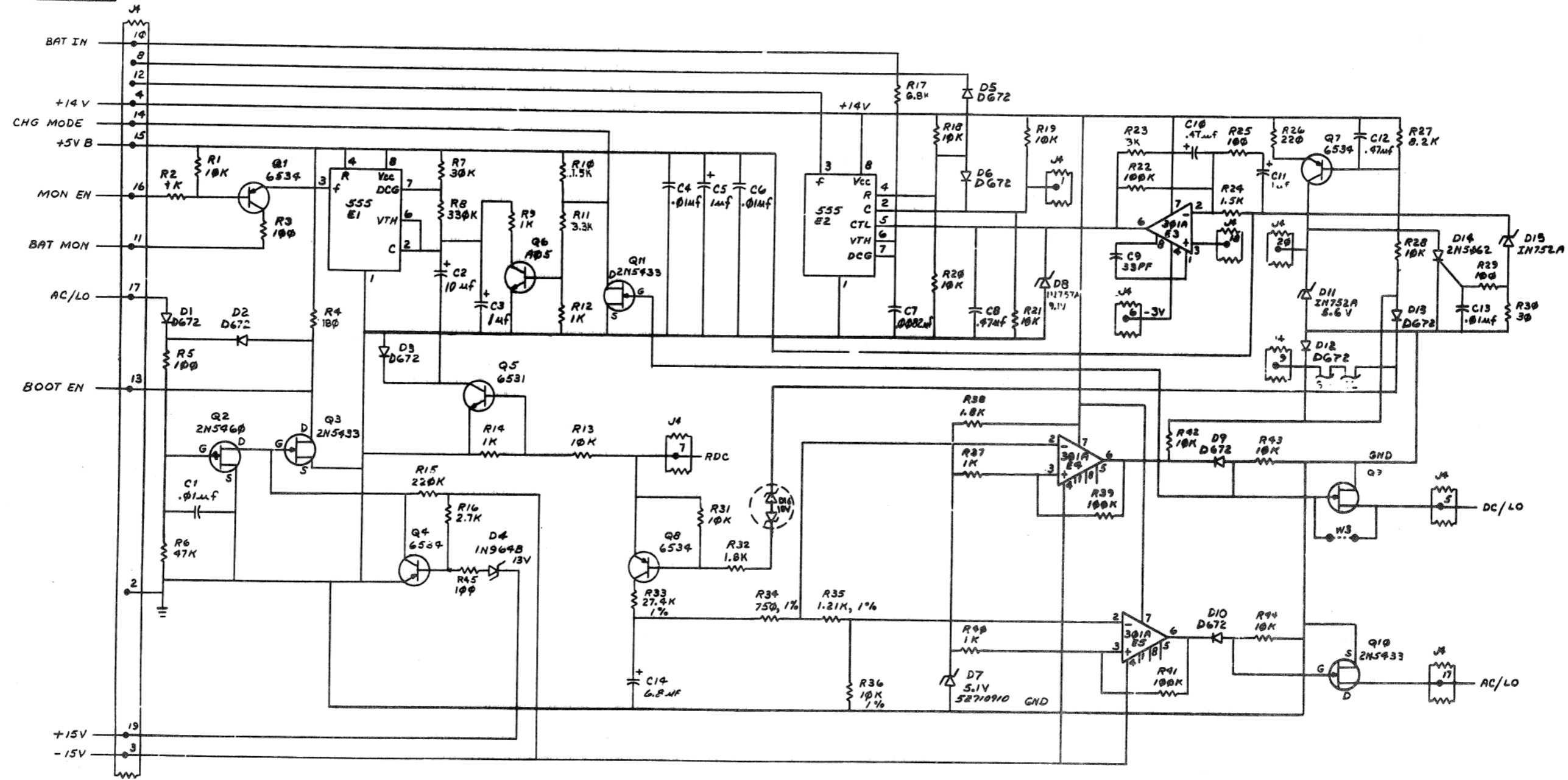
REVISION HISTORY			VARIATIONS FOR THIS ASSY.		FIRST USED ON:		DIGITAL EQUIPMENT CORPORATION MAYNARD, MASSACHUSETTS				
CHK	ECO NO	REV			MADE BY:	DATE:	TITLE	SIZE	CODE	DOCUMENT NUMBER	REV
W.H	00003	E		00	F.MALANSON	21-FEB-78	PARTS LIST				
					F.BEIDMAN	21-FEB-78	H785 CONTROL BOARD				
					J.MERCURI	21-FEB-78					
					R.B.KING	21-FEB-78		K	PL	5412385-0-0	E
					J.MERCURI	21-FEB-78					EDIT#
										ASSY.NO.: D-UA-5412385-0-0	4

"THIS DRAWING AND SPECIFICATIONS HEREIN, ARE THE PROPERTY OF DIGITAL EQUIPMENT CORPORATION AND SHALL NOT BE REPRODUCED OR COPIED OR USED IN WHOLE OR IN PART AS THE BASIS FOR THE MANUFACTURE OR SALE OF ITEMS WITHOUT WRITTEN PERMISSION.
COPYRIGHT 1978. DIGITAL EQUIPMENT CORPORATION"

LINE ITEM	DOCUMENT NO.	PART NO.	DESCRIPTION	QTY	REFERENCE DESIGNATORS
30	30	1300271-00	220 1/4W 5% CC (13-00	1	R26
31	31	1303179-00	8.2 K 1/4W 5% CC (13-00	1	R27
32	32	1302751-00	30 1/4W 5% CC (13-00	1	R30
33	33	1309417-00	27.4 K 1/4W 1% RN55D-F 100PPM (13-00	1	R33
34	34	1503409-00	DEC6534D PNP 310MW SI 40 90 P	4	Q1,Q4,Q7,Q8
35	35	1510233-00	2N 5460 FET 310MW SIP CHNHL	1	Q2
36	36	1511686-00	DEC5433 FET N 350MW 10 25 1A 20U	4	Q3,Q9,Q10,Q11
37	37	1509338-00	DEC6531B NPN 310MW SI 40 90 P	1	Q5
38	38	1510705-00	XA 05 NPN 500MW SI 60 50 P	1	Q6
39	39	1911944-00	555CN TIMER,FUNCT.BLOCK	2	E1,E2
40	40	1910282-00	301AN OP AMP	3	E3,E4,E5
41	41	1300391-00	1.5 K 1/4W 5% CC (13-00	2	R10,R24
42	42	1213335-00	HEADER 20POS RT ANGLE FOR 12-13334	1	J4
43	43	1300439-00	3.3 K 1/4W 5% CC (13-00	1	R11
44	44	1212416-02	THERMOSTAT,00160,N/C,SPST,AUTO RESET	2	S1,S2
45	45	1300432-00	3 K 1/4W 5% CC (13-00	1	R23
46	46	1109990-00	1N 757A VZ= 9.1 5% .40W P	1	D8
47	47	1005965-00	.47 MFD 35V 10% 150D S.TA (10-00	1	C10
48	48	9009157-00	ADHESIVE, PERMABOND #101	A/R	
49	49	9105740-55	WIRE(WRAP)30AWG UL1423 (91-00	A/R	

DIGITAL EQUIPMENT CORPORATION MAYNARD, MASSACHUSETTS	TITLE PARTS LIST M785 CONTROL BOARD	SIZE K	CODE PL	DOCUMENT NUMBER 5412385-0-0	REV E
---	---	-----------	------------	--------------------------------	----------

THIS DRAWING AND SPECIFICATIONS HEREIN ARE THE PROPERTY OF DIGITAL EQUIPMENT CORPORATION AND SHALL NOT BE REPRODUCED OR COPIED OR USED IN WHOLE OR IN PART AS THE BASIS FOR THE MANUFACTURE OR SALE OF ITEMS WITHOUT WRITTEN PERMISSION. COPYRIGHT © 1976, DIGITAL EQUIPMENT CORPORATION



NOTES:
 1. ~~FOR TEST OPERATION REMOVE JUMPER W2.~~
 2. ~~FOR TEST OPERATION REMOVE JUMPER W1.~~
 W3 IS AN ENGINEERING OPTION TO BE DETERMINED AT A LATER DATE.

REV. NO.	REV. DATE	BY	CHK
1	12/17/76	J. MERCURI	J. MERCURI
2	1/12/77	G. POTTER	G. POTTER
3	1/12/77	G. POTTER	G. POTTER

DRN. <i>J. Mercuri</i>	DATE <i>8-17-76</i>	FIRST USED ON	<i>20-0350</i>
CHK'D		TITLE	H785
ENG.		CONTROL BOARD	
PROJ. ENG.		SIZE	D
PROD. <i>William</i>		CODE	CS
NEXT HIGHER ASSY.		NUMBER	5412385-0-1
SCALE		REV.	E
SHEET	1 OF 1	DIST.	