

"THE MATERIAL HEREIN IS FOR INFORMATION PURPOSES ONLY AND IS SUBJECT TO CHANGE WITHOUT NOTICE. DIGITAL EQUIPMENT CORPORATION ASSUMES NO RESPONSIBILITY FOR ANY ERRORS WHICH MAY APPEAR HEREIN."

## FIELD MAINTENANCE PRINT SET

"THIS DRAWING AND SPECIFICATIONS, HEREIN, ARE THE PROPERTY OF DIGITAL EQUIPMENT CORPORATION AND SHALL NOT BE REPRODUCED OR COPIED OR USED IN WHOLE OR IN PART AS THE BASIS FOR THE MANUFACTURE OR SALE OF ITEMS WITHOUT WRITTEN PERMISSION. COPYRIGHT © 1976, DIGITAL EQUIPMENT CORPORATION."

### TABLE OF CONTENTS

KK8-F (FIELD MAINTENANCE PRINT SET)	B-TC-KK8-F-3
CENTRAL PROCESSOR (KK8-F) (DD)	B-DD-KK8-F
CENTRAL PROCESSOR (KK8-F)	D-UA-KK8-F- $\emptyset$
ENGINEERING SPECIFICATION	A-SP-KK8-F-1
MAJOR REGISTERS (KK8/E)	E-CS-M83 $\emptyset$ $\emptyset$ - $\emptyset$ -1
MAJOR REG. CONT. (M831 $\emptyset$ )	E-CS-M831 $\emptyset$ - $\emptyset$ -1
BUS LOADS	E-CS-M832 $\emptyset$ - $\emptyset$ -1
TIMING GENERATOR	C-CS-M833 $\emptyset$ -YB-1
TIMING GENERATOR	E-CS-M833 $\emptyset$ - $\emptyset$ -1

UNIT VARIATIONS COVERED BY THIS PRINT SET
KK8-F

# KK8-F Field Maintenance Print Set

**Digital Equipment Corporation**

PRINT SET ORDER NO.  
MP $\emptyset$ 25 $\emptyset$

REVISIONS  N/K	REV.					TITLE: <span style="float:right; border: 1px solid black; padding: 2px;">digital</span>  KK8-F			
	CHG. NO.		USED ON OPTION/MODEL PDP8E	DRN. S. ROBERTS	DATE 12OCT76				
	DATE			CHK'D <i>S. Roberts</i>	DATE 21OCT76				
				PROJ. ENG. <i>W.P.I.</i>	DATE 5-NOV-76				
				FIELD SERV. <i>[Signature]</i>	DATE 5-NOV-76	SIZE <b>B</b>	CODE <b>TC</b>	NUMBER KK8-F-3	REV.
			SHEET I OF I	DIST.					

EN-01124-16-N676 (327)

"THE MATERIAL HEREIN IS FOR INFORMATION PURPOSES ONLY AND IS SUBJECT TO CHANGE WITHOUT NOTICE. DIGITAL EQUIPMENT CORPORATION ASSUMES NO RESPONSIBILITY FOR ANY ERRORS WHICH MAY APPEAR HEREIN."

# DRAWING DIRECTORY

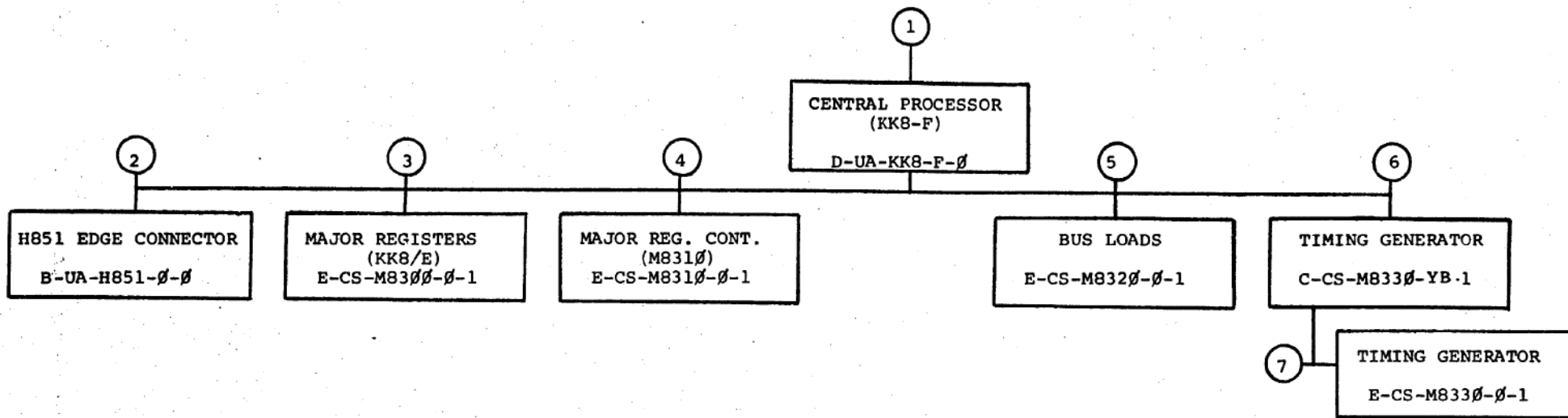
"THIS DRAWING AND SPECIFICATIONS, HEREIN, ARE THE PROPERTY OF DIGITAL EQUIPMENT CORPORATION AND SHALL NOT BE REPRODUCED OR COPIED OR USED IN WHOLE OR IN PART AS THE BASIS FOR THE MANUFACTURE OR SALE OF ITEMS WITHOUT WRITTEN PERMISSION, COPYRIGHT © 1976 DIGITAL EQUIPMENT CORPORATION."

FOR FIELD MAINTENANCE PRINT  
REFER TO B-TC-KK8-F-3

UNIT VARIATIONS	
VAR	TITLE
KK8-F	CENTRAL PROCESSOR

REVISIONS	CHANGE NO.	REV.
CHK		

USED ON OPTION/MODEL PDP8-E	DRN. S. ROBERTS	DATE 12OCT76	TITLE CENTRAL PROCESSOR (KK8-F)		digital
	CHK'D. <i>S. Roberts</i>	DATE 21OCT76			
	PROJ. ENG. <i>W. Deal</i>	DATE 5 NOV 76	SIZE B	CODE DD	NUMBER KK8-F
	PROD. <i>W. Deal</i>	DATE 5 NOV 76	REV.		
SHEET 1 OF 3		DIST.			



TITLE	SHEET	SIZE	CODE	NUMBER	REV
CENTRAL PROCESSOR (KKB-F)	2 OF 3	B	DD	KKB-F	

FIND NO.	DRAWING NO.	DESCRIPTION	TYPE	FIND NO.	DRAWING NO.	DESCRIPTION	TYPE
1	MP00250	KK8-F (FIELD MAINTENANCE PRINT SET)	-	5	E-CS-M8320-0-1	BUS LOADS	E/M
	B-TC-KK8-F-3	KK8-F (TABLE OF CONTENTS)	-		K-CO-M8320-0-4	X-Y COORDINATE HOLE LOCATION	M
	D-UA-KK8-F-0	CENTRAL PROCESSOR (KK8-F)	E/M		D-AH-M8320-0-5	ASSY/DRILLING HOLE LAYOUT	M
	A-PL-KK8-F-2	KK8-F SHIPPING LIST	-		B-MH-M8320-0-6	MODULE ECO HISTORY	-
	A-SP-KK8-F-1	ENGINEERING SPEC.	-		5009486	ETCHED CIRCUIT BOARD	M
2	B-UA-H851-0-0	H851 EDGE CONNECTOR	E/M	6	C-CS-M8330-YB-1	TIMING GENERATOR	E/M
	B-CS-H851-0-1	CIRCUIT SCHEMATIC	E/M		K-CO-M8330-0-4	X-Y COORDINATE HOLE LOCATION	M
	C-AH-H851-0-5	ASSY/DRILLING HOLE LAYOUT	M		D-AH-M8330-0-5	ASSY/DRILLING HOLE LAYOUT	M
	B-MH-H851-0-6	MODULE ECO HISTORY	-		B-MH-M8330-YB-6	MODULE ECO HISTROY	-
	D-IA-5008903-0-0	ETCH BOARD	M		5009707	ETCHED CIRCUIT BOARD	M
	120152-0-0	CONN. BLOCK, 72 PIN	M				
3	E-CS-M8300-0-1	MAJOR REGISTERS (KK8-E)	E/M	7	E-CS-M8330-0-1	TIMING GENERATOR	E/M
	K-CO-M8300-0-4	X-Y COORDINATE HOLE LOCATION	M		K-CO-M8330-0-4	X-Y COORDINATE HOLE LOCATION	M
	D-AH-M8300-0-5	ASSY/DRILLING HOLE LAYOUT	M		D-AH-M8330-0-5	ASSY/DRILLING HOLE LAYOUT	M
	B-MH-M8300-0-6	MODULE ECO HISTORY	-		B-MH-M8330-0-6	MODULE ECO HISTORY	-
	5009250	ETCHED CIRCUIT BOARD	M		5009707	ETCHED CIRCUIT BOARD	M
4	E-CS-M8310-0-1	MAJOR REG. CONT. (M8310)	E/M				
	K-CO-M8310-0-4	X-Y COORDINATE HOLE LOCATION	M				
	D-AH-M8310-0-5	ASSY/DRILLING HOLE LAYOUT	M				
	B-MH-M8310-0-6	MODULE ECO HISTORY	-				
	5009278	ETCHED CIRCUIT BOARD	M				

TYPE: E ELECTRICAL  
M MECHANICAL  
E/M ELECTRO/MECHANICAL

digital

TITLE

CENTRAL PROCESSOR (KK8-F)

SHEET 3 OF 3

SIZE CODE  
B DD

NUMBER  
KK8-F

REV

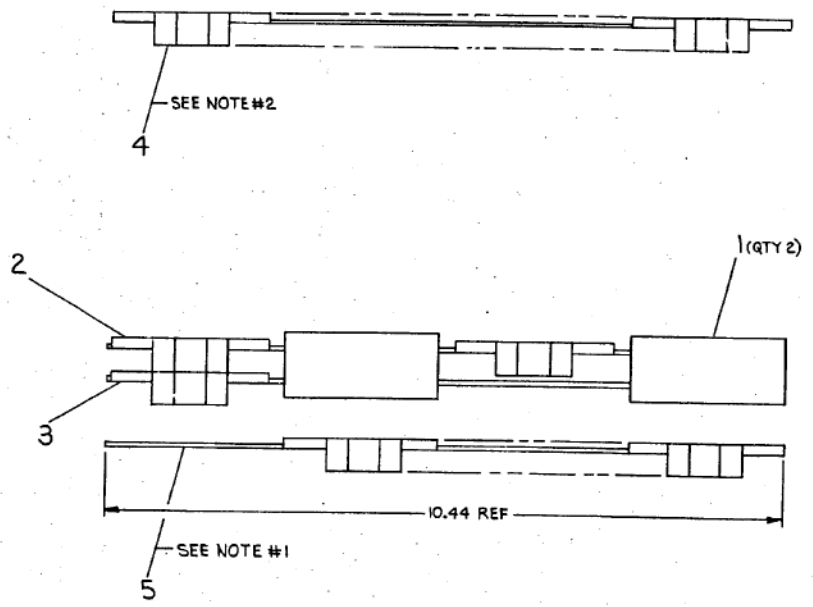
THIS DRAWING AND SPECIFICATIONS HEREIN ARE THE PROPERTY OF DIGITAL EQUIPMENT CORPORATION AND SHALL NOT BE REPRODUCED OR COPIED OR USED IN WHOLE OR IN PART AS THE BASIS FOR THE MANUFACTURE OR SALE OF ITEMS WITHOUT WRITTEN PERMISSION. COPYRIGHT © 1971, DIGITAL EQUIPMENT CORPORATION

0-1-8KKK101M 2

- NOTES:**
1. ITEM #5 (TIMING GENERATOR) MUST BE PLACED IN THE FIRST SLOT OF THE OMNIBUS AFTER THE CONSOLE BOARD. (ITEM #5 CAN BE REPLACED BY E-CS-M833 $\phi$ -1, IF THE ETCH REV IS "F" OR LATER)
  2. ITEM #4 (BUS LOADS) MUST BE PLACED IN THE LAST SLOT OF THE LAST OMNIBUS
  3. REFER TO THE PRIORITY LISTING A-SP-PDP8E- $\phi$ -4

D  
C  
B  
A

D  
C  
B  
A



1	KK8-F SHIPPING LIST	A-PL-KK8-F-2	6
1	TIMING GENERATOR	E-CS-M833 $\phi$ -YB-1	5
1	BUS LOADS	E-CS-M832 $\phi$ -1	4
1	MAJOR REGISTER CONTROL	E-CS-M831 $\phi$ -1	3
1	MAJOR REGISTORS	E-CS-M830 $\phi$ -1	2
2	EDGE CONNECTOR	B-UA-M851- $\phi$	1

ANGLE	CLASS OF ACCURACY	NOMINAL DIMENSION RANGE INCHES				
		0.001 - 0.004	0.004 - 0.008	0.008 - 0.016	0.016 - 0.032	0.032 - 0.064
30°	±0.001	±0.001	±0.001	±0.001	±0.001	
45°	±0.001	±0.001	±0.001	±0.001	±0.001	
60°	±0.001	±0.001	±0.001	±0.001	±0.001	
90°	±0.001	±0.001	±0.001	±0.001	±0.001	

THIRD ANGLE PROJECTION

REMOVE BURRS AND BREAK SHARP CORNERS

DO NOT SCALE DWG

MATERIAL SEE PARTS LIST

FINISH

DRS: *[Signature]* 11/03/76

CHK: *[Signature]* 11/03/76

ENG: *[Signature]* F-100-2

PROJ. ENG: *[Signature]* 5/10/76

PROD: *[Signature]* 5/10/76

NEXT HIGH. IN ASSY.

FIRST USED ON PDP8E

TITLE CENTRAL PROCESSOR (KK8-F)

SIZE CODE D UA

NUMBER KK8-F- $\phi$

REV. 1

SHEET 1 OF 1

DIST.

REV.	
CHANGE NO.	
CHK	

11/03/76

8 7 6 5 4 3 2 1

This document contains confidential proprietary information of D. E. C. This information shall not be disclosed in any manner to any person or entity without the express written approval of Digital Equipment Corporation. Copyright © 1976 Digital Equipment Corporation.

<b>DIGITAL EQUIPMENT CORPORATION</b> MAYNARD, MASSACHUSETTS							
<b>ENGINEERING SPECIFICATION</b>						DATE 9/27/76	
TITLE KKB-F 8A600/8A620 CENTRAL PROCESSOR							
REVISIONS							
REV	DESCRIPTION	CHG NO	ORIG	DATE	APPD BY	DATE	
ENG Willie Dash <small>DEC 16-10921-1079A-R873 DPA 1076</small>	APPD <i>Willie Dash</i>	SIZE A	CODE SP	NUMBER KKB-F-1	REV		

SHEET 1 OF 3

<b>ENGINEERING SPECIFICATION</b>			<small>Continuation</small> CONTINUATION SHEET
TITLE KKB-F 8A600/8A620 CENTRAL PROCESSOR			
<b>1.0 OVERALL DESCRIPTION</b>			
KKB-F is a 12-bit central processor for the 8A600 and 8A620 series. The Small Computer Handbook and the PDP8E Maintenance Manual represent part of this specification and should be referred to.			
<b>2.0 GENERAL SPECIFICATION</b>			
<b>2.1 Definition of Basic System</b>			
A. M8300 - Major registers B. M8310 - Major Register Control C. M8330-YB - Timing Generator or M8330 etch rev "F" or later Timing Generator D. M8320 - Bus Loads			
<b>2.2 List of Included Options</b>			
A. M8340 - KES-E Extended Arithmetic Unit B. May handle other options not directly connected to the processor - such as Programmer's Console, teletype, etc. Reference Small Computer Handbook.			
<b>2.3 Mechanical Packaging</b>			
A. Each board is an 8½ by 10½ quad board (Ref D-MD-7605994-0-0). B. The M8300 is connected by the use of two HB51's to the M8310. C. The M8330 or (M8330-YB) and M8310 each have one slot provided to connect to the KES-E using HB51 connectors. D. All modules plug into the Omnibus. (Ref Small Computer Handbook and A-SP-PDP8E-0-4)			
<b>2.4 Environmental Specification</b>			
A. Temperature 32°F - 122°F (0°C - 50°C) B. Humidity Maximum 90% Rel. No condensation C. Power, total (for all four boards)			
	+5V	+15V	-15V
	4.42A	.53A	.97A
	SIZE A	CODE SP	NUMBER KKB-F-1

DEC FORM NO EN-01022-16-4370-(381)  
DPA 1076

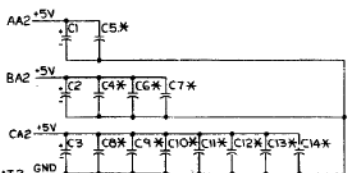
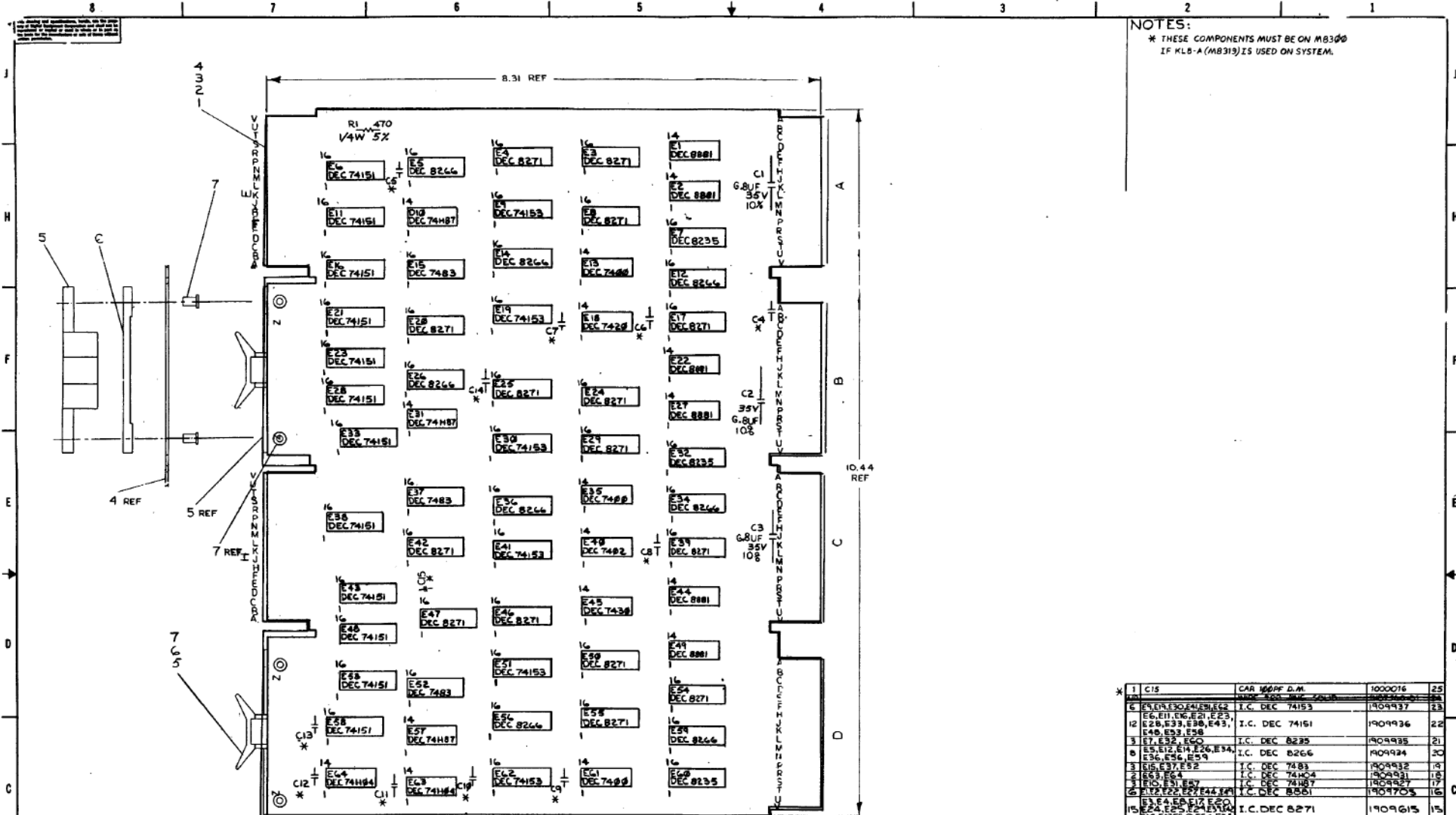
SHEET 2 OF 3

<b>ENGINEERING SPECIFICATION</b>			<small>Continuation</small> CONTINUATION SHEET
TITLE KKB-F 8A600/8A620 CENTRAL PROCESSOR			
<b>2.5 General Performance Specification</b>			
Refer to Small Computer Handbook.			
<b>3.0 Specification of Vendor Supplied Equipment</b>			
Refer to Purchase Specification for component in question.			
<b>4.0 Programming</b>			
Refer to Small Computer Handbook.			
<b>5.0 Interface Specifications</b>			
Refer to Small Computer Handbook.			
	SIZE A	CODE SP	NUMBER KKB-F-1

DEC FORM NO DEC 16-(381)-1022-N370  
DPA 1076

SHEET 3 OF 3

NOTES:  
 \* THESE COMPONENTS MUST BE ON M8300  
 IF KLB-A (M8313) IS USED ON SYSTEM.



AC2, AF1, AF2, AN1, AN2, AT1, AT2,  
 BC1, BC2, BF1, BF2, BN1, BN2, BT1, BT2,  
 CC1, CC2, CH1, CF2, CN1, CN2, CT1, CT2,  
 DC1, DC2, DF1, DF2, DN1, & DT2

DEC 8235	8	16			
DEC 7483	12	6			
DEC 8271	8	16			
DEC 8266	8	16			
DEC 74153	8	16			
DEC 74151	8	16			
K TYPE	GND	25V			

QTY	REF DESIGNATION	DESCRIPTION	PART NO.	QTY
1	C15	CAR M8300 D.M.	1000016	25
6	E1, E10, E11, E12, E13, E14, E15, E16, E17, E18, E19, E20, E21, E22, E23, E24, E25, E26, E27, E28, E29, E30, E31, E32, E33, E34, E35, E36, E37, E38, E39, E40, E41, E42, E43, E44, E45, E46, E47, E48, E49, E50, E51, E52, E53, E54, E55, E56, E57, E58	I.C. DEC 74153	1049937	23
12	E2, E3, E4, E5, E6, E7, E8, E9, E13, E14, E15, E16, E17, E18, E19, E20, E21, E22, E23, E24, E25, E26, E27, E28, E29, E30, E31, E32, E33, E34, E35, E36, E37, E38, E39, E40, E41, E42, E43, E44, E45, E46, E47, E48, E49, E50, E51, E52, E53, E54, E55, E56, E57, E58	I.C. DEC 74151	1049936	22
3	E7, E32, E30	I.C. DEC 8235	1049935	21
8	E5, E12, E11, E26, E34, E36, E36, E53	I.C. DEC 8266	1049934	20
3	E15, E37, E52	I.C. DEC 7483	1049932	13
2	E63, E64	I.C. DEC 7404	1049931	18
1	E10, E31, E57	I.C. DEC 74187	1049927	17
6	E12, E22, E27, E44, E41	I.C. DEC 8261	1049705	16
15	E24, E25, E27, E28, E29, E30, E31, E32, E33, E34, E35, E36, E37, E38, E39, E40, E41, E42, E43, E44, E45, E46, E47, E48, E49, E50, E51, E52, E53, E54, E55, E56, E57, E58	I.C. DEC 8271	1049615	15
1	E40	I.C. DEC 7402	1049604	14
1	E41	I.C. DEC 7430	1049575	13
1	E42	I.C. DEC 7400	1049574	13
1	E43, E45, E41	I.C. DEC 7400	1049574	13
1	E44	RESISTOR 470 1/4W 5%	1003316	10
1	E45	CAP 5.0UF 35V 20% 5MM	1000270	8
4	E46, E47, E48, E49	STRIP (CABLE STAMP)	1000270	32
1	E48	STRIP (CABLE STAMP)	1000270	32
1	E49	STRIP (CABLE STAMP)	1000270	32
1	E50	STRIP (CABLE STAMP)	1000270	32
1	E51	STRIP (CABLE STAMP)	1000270	32
1	E52	STRIP (CABLE STAMP)	1000270	32
1	E53	STRIP (CABLE STAMP)	1000270	32
1	E54	STRIP (CABLE STAMP)	1000270	32
1	E55	STRIP (CABLE STAMP)	1000270	32
1	E56	STRIP (CABLE STAMP)	1000270	32
1	E57	STRIP (CABLE STAMP)	1000270	32
1	E58	STRIP (CABLE STAMP)	1000270	32

MAJOR REGISTERS (KK8/E)

REVISIONS

REV	DATE	DESCRIPTION
1	1/7/71	INITIAL DESIGN
2	1/14/71	REVISED TO ACCOMMODATE...
3	1/21/71	REVISED TO ACCOMMODATE...
4	1/28/71	REVISED TO ACCOMMODATE...
5	2/4/71	REVISED TO ACCOMMODATE...
6	2/11/71	REVISED TO ACCOMMODATE...
7	2/18/71	REVISED TO ACCOMMODATE...
8	2/25/71	REVISED TO ACCOMMODATE...

DESIGNED BY: [Name]

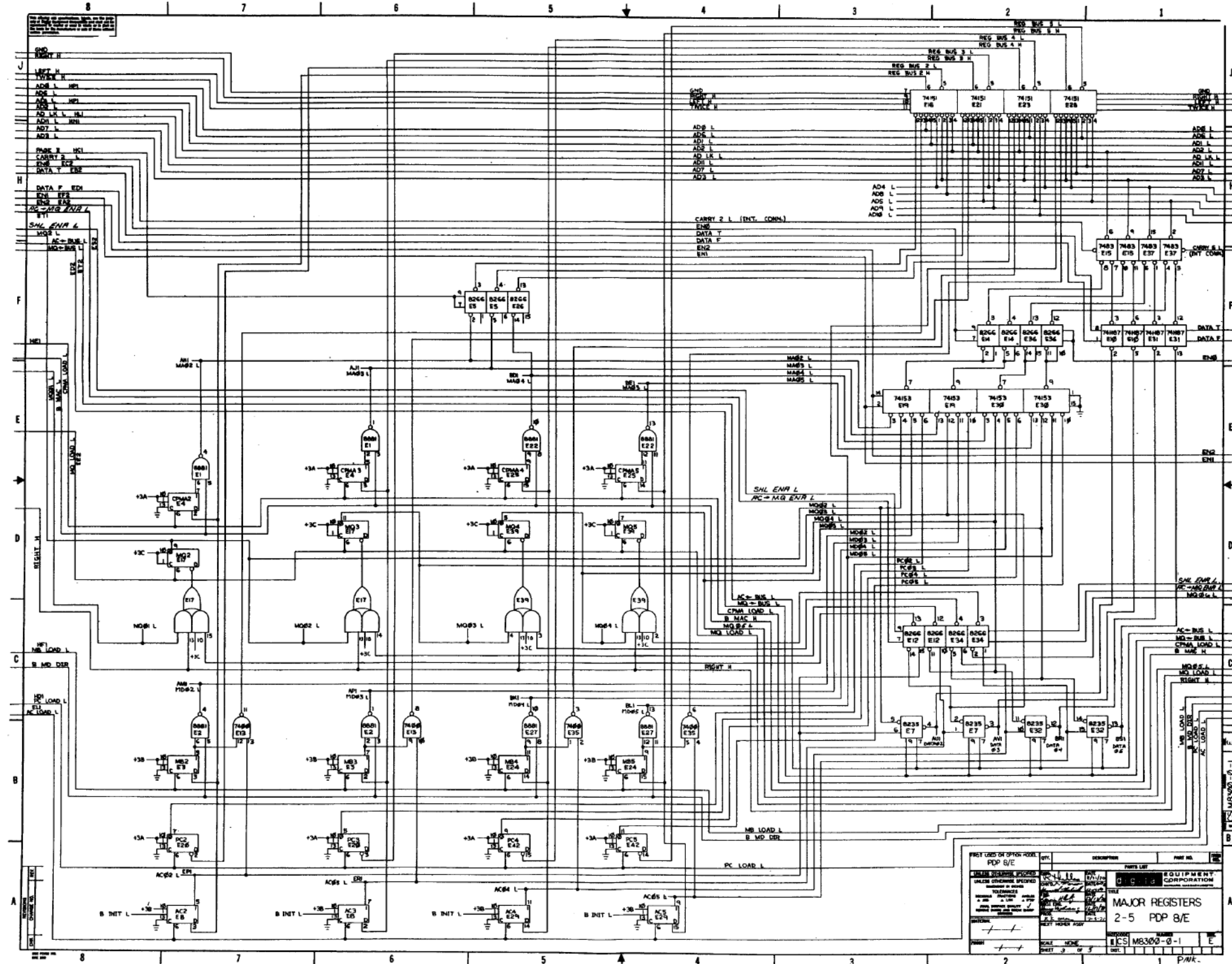
CHECKED BY: [Name]

DATE: 2/1/71

SHEET: 1 OF 5



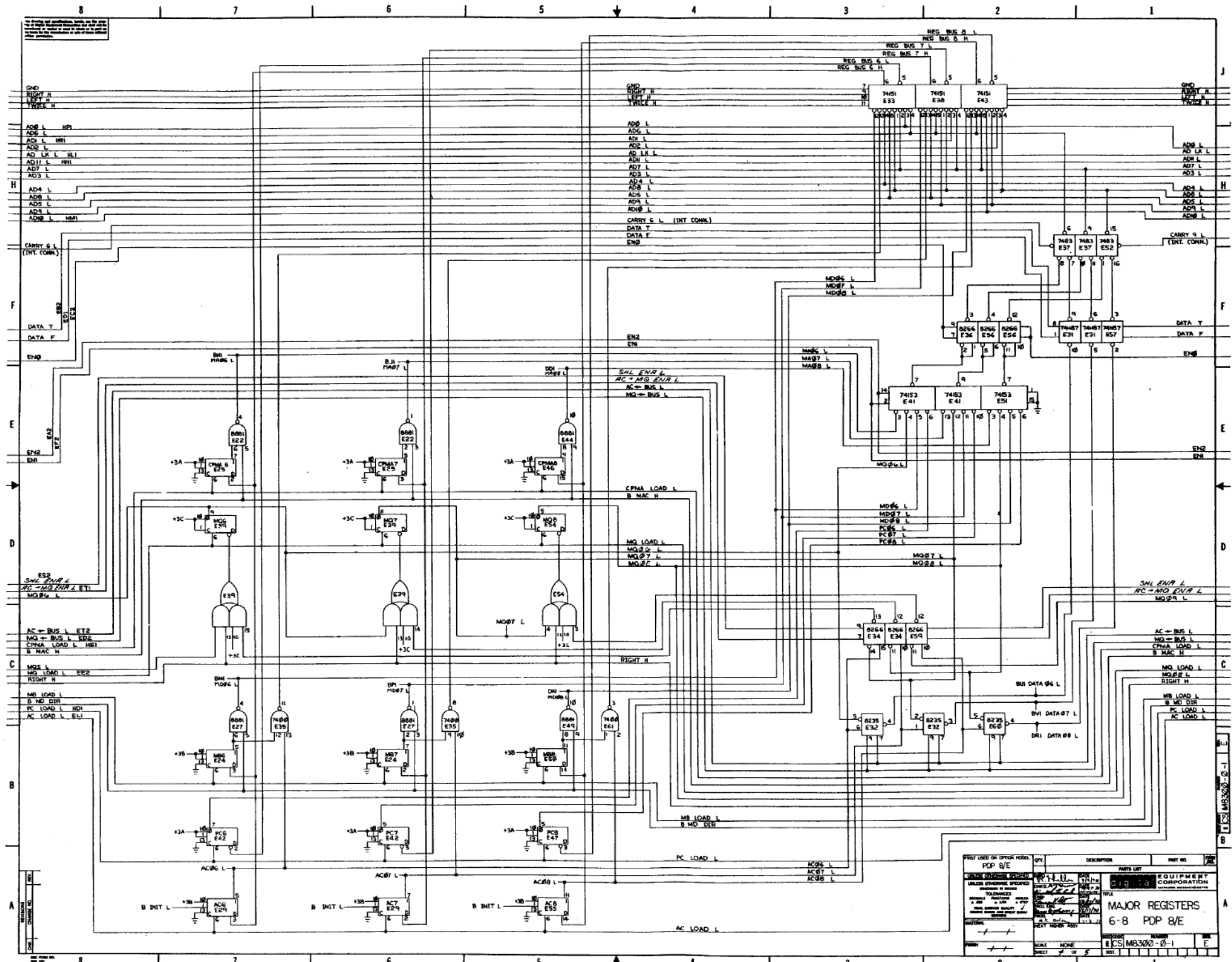




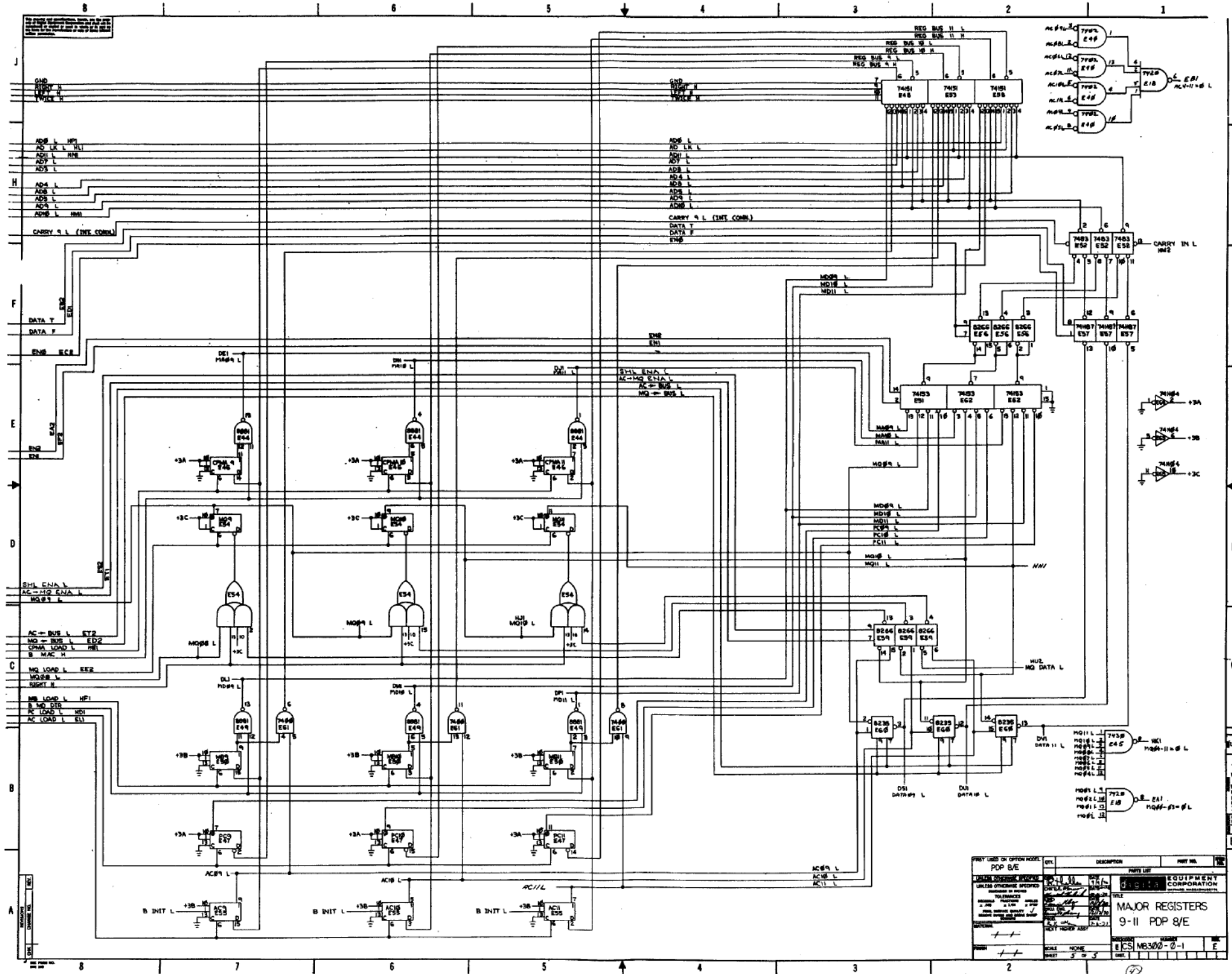
REV	DESCRIPTION	DATE	BY
1	MAJOR REGISTERS	11/15/68	[Signature]
2	2-5 PDP 8/E	11/15/68	[Signature]
3			

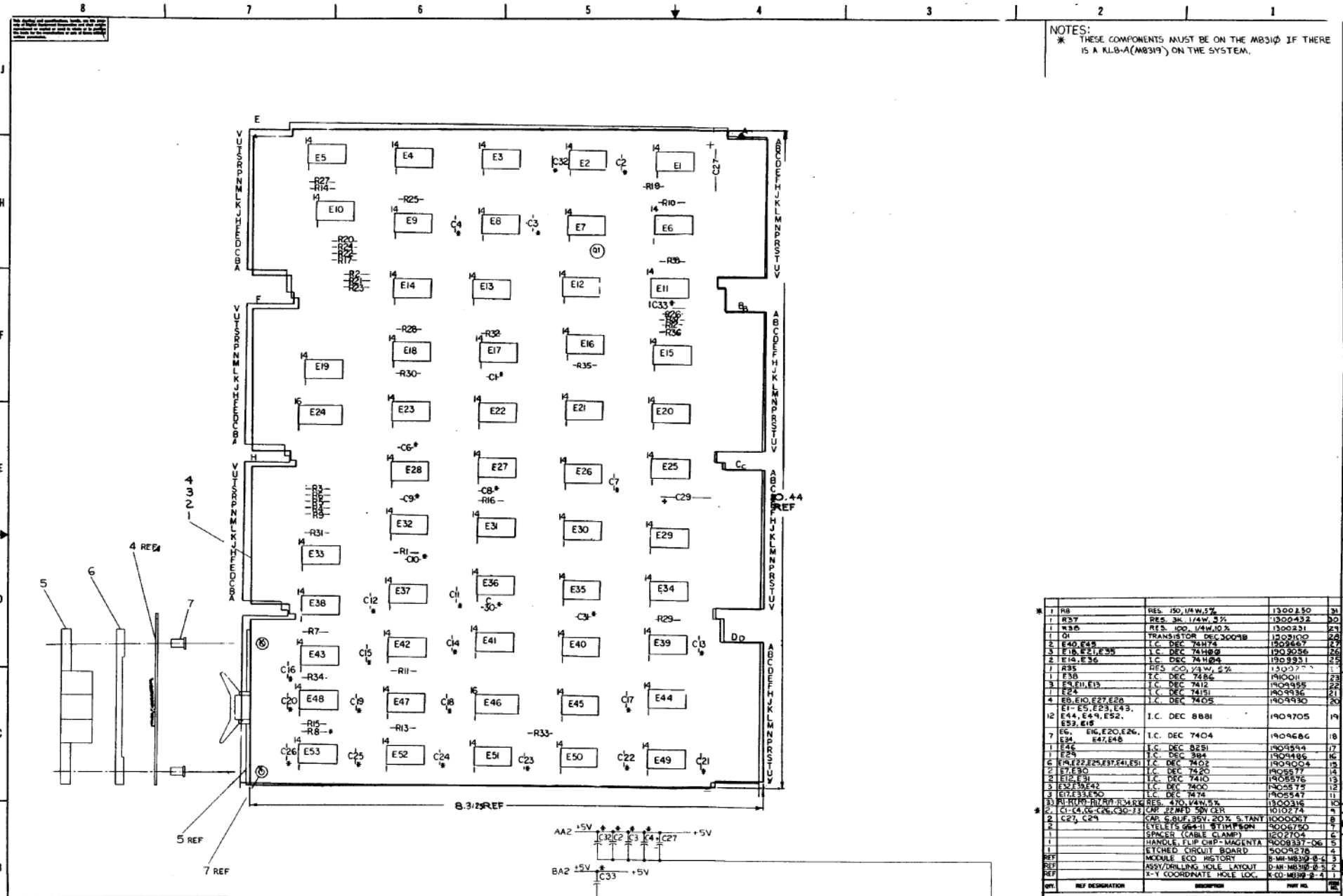
FIRST COPY OF OPTION MODEL PDP 8/E	PARTS LIST [Handwritten entries]	EQUIPMENT CORPORATION [Handwritten entries]
TITLE MAJOR REGISTERS		
MODEL 2-5 PDP 8/E		
DRAWING NO. ECS M8300-0-1		
SCALE NONE SHEET 3 OF 3		



PART NO.	DESCRIPTION	QTY	REVISION	DATE	BY
	POP 8/E		1		
<p>MAJOR REGISTER 6-8 POP 8/E</p>					
<p>REVISIONS</p> <p>NO. REV. DESCRIPTION DATE BY</p> <p>1 1 1 1 1</p>					
<p>MAJOR REGISTER 6-8 POP 8/E</p>					
<p>REVISED BY: [Signature]</p>					
<p>DATE: [Blank]</p>					
<p>PROJECT: [Blank]</p>					
<p>DRAWN BY: [Blank]</p>					
<p>CHECKED BY: [Blank]</p>					
<p>SCALE: NONE</p>					
<p>SHEET 2 OF 5</p>					



PART LIST ON OPTION MODEL	QTY	DESCRIPTION	PART NO.
PDP 9/E			
EQUIPMENT CORPORATION			
MAJOR REGISTERS			
9-11 PDP 9/E			
DATE: 11/11/68		REVISION: 0-1	DESIGNED BY: E
DRAWN BY: S/S		CHECKED BY:	DATE: 11/11/68



NOTES:  
 \* THESE COMPONENTS MUST BE ON THE MB310 IF THERE IS A KLB-A(MB319) ON THE SYSTEM.

DEC 74151	B	16
DEC 8251	B	16
DEC 394	1	9
IC TYPE	GND	±3V

ITEM NO.	QTY	FROM PT	TO PT
AMPER LIST			

AC2, AF1, AF2, AN2, AT2,  
 BC1, BC2, BF2, CC2, CN2,  
 CT2, DC1, DC2, DF2, DN1

REF	REF DESIGNATION	DESCRIPTION	QTY	REV
1	R8	RES. 150, 1/4W, 5%	13004250	31
1	R37	RES. 3K, 1/4W, 5%	1300432	30
1	R38	RES. 100, 1/4W, 5%	1300431	29
1	Q1	TRANSISTOR DEC3003B	1300150	28
2	E40, E45	I.C. DEC 74174	1509557	27
3	E18, E21, E35	I.C. DEC 74180	1509556	26
2	E14, E36	I.C. DEC 74184	1509531	25
1	R35	RES. 100, 1/4W, 5%	1300277	24
1	F35	I.C. DEC 7486	1400011	23
3	E9, E11, E19	I.C. DEC 7412	1404455	22
1	E24	I.C. DEC 74131	1404436	21
4	E8, E10, E27, E28	I.C. DEC 7405	1404430	20
12	E1-E5, E23, L43, E44, E49, E52, E53, E18	I.C. DEC 8881	1404705	19
7	E6, E16, E20, E26, E34, E47, E48	I.C. DEC 7404	1404686	18
1	E46	I.C. DEC 8251	1404594	17
1	E24	I.C. DEC 394	1404486	16
6	E18, E22, E25, E37, E41, E51	I.C. DEC 7402	1404004	15
2	E7, E30	I.C. DEC 7420	1403577	14
2	E12, E31	I.C. DEC 7410	1403576	13
3	E22, E35, E42	I.C. DEC 7400	1403572	12
3	E15, E33, E50	I.C. DEC 7474	1403547	11
3	R1, R10, R11, R12, R13, R14	RES. 470, 1/4W, 5%	1300316	10
2	CT, C1, C6, C26, C30-73	CON. 22MFD 50V GER.	1010274	9
2	C2, C29	CON. 5.6UF, 35V, 20% S TANT	1000961	8
1	E14, E18	ETELET5 664-11 STIMPSON	1006750	7
1	E24	SPACER (CABLE CLAMP)	1002704	6
1	E18, E30	HANDLE FLIP CHIP-MAGENTA	1008337-06	5
REF		ETCHED CIRCUIT BOARD	5005215	4
REF		MODULE ECO HISTORY	8-MI-MB310-0-3	3
REF		ASY/DRILLING HOLE LAYOUT	8-MI-MB310-0-5	2
REF		X-Y COORDINATE HOLE LOC.	8-MI-MB310-0-4	1

DEC 74054	2	18	6
DEC 8251	1	16	5
DEC 394	1	9	4
IC TYPE	GND	±3V	

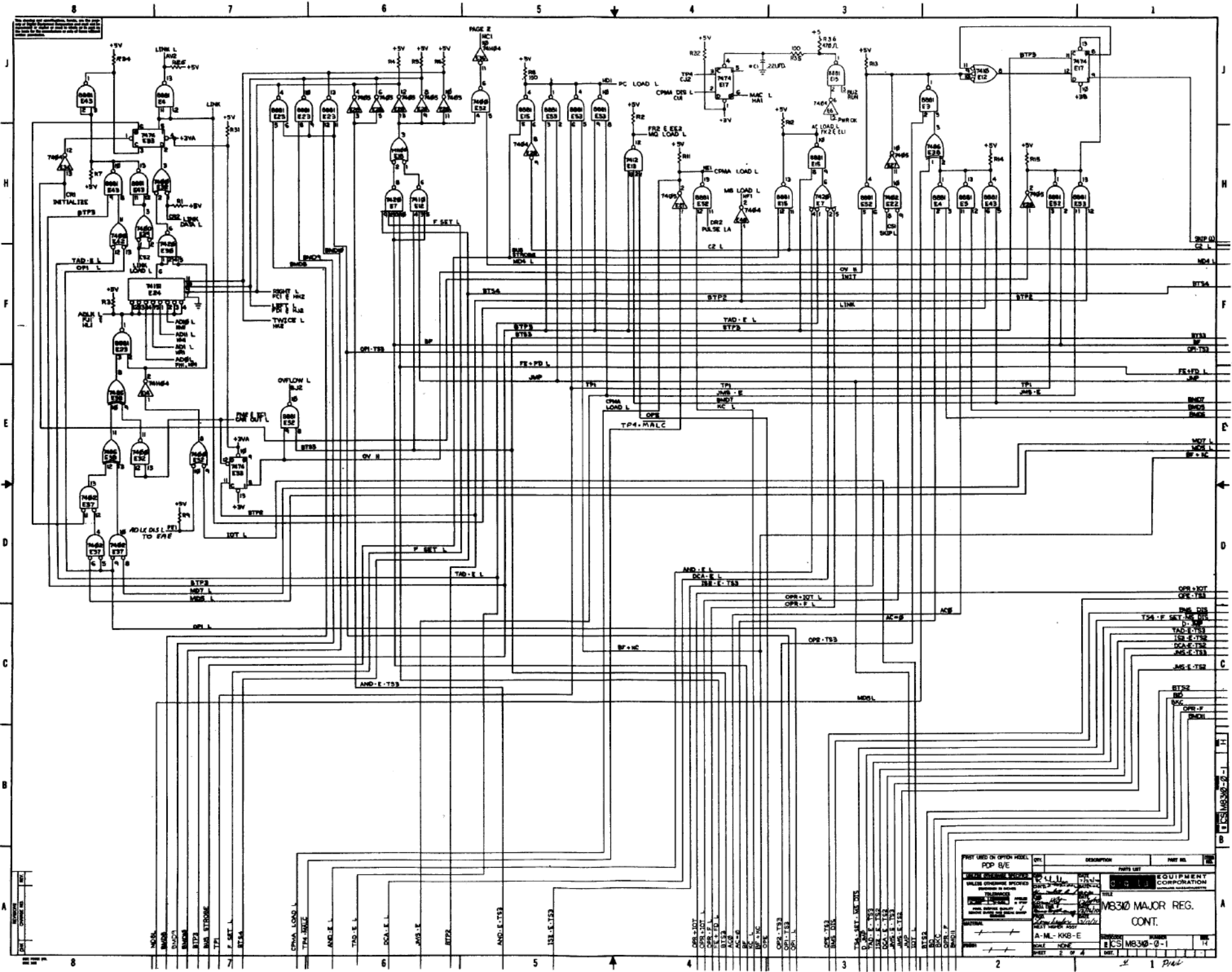
DEC NO.	EA NO.	REV	REV COLUMN	REV LIST
PRINTED CIRCUIT BOARD REVISION				
CIRCUIT DATE				
DESIGNED BY				
CHECKED BY				
DRAWN BY				
DATE				
SCALE				
SHEET				

DEC NO.	EA NO.	REV	REV COLUMN	REV LIST
PRINTED CIRCUIT BOARD REVISION				
CIRCUIT DATE				
DESIGNED BY				
CHECKED BY				
DRAWN BY				
DATE				
SCALE				
SHEET				

MAJOR REG.  
 CONT. (MB310)

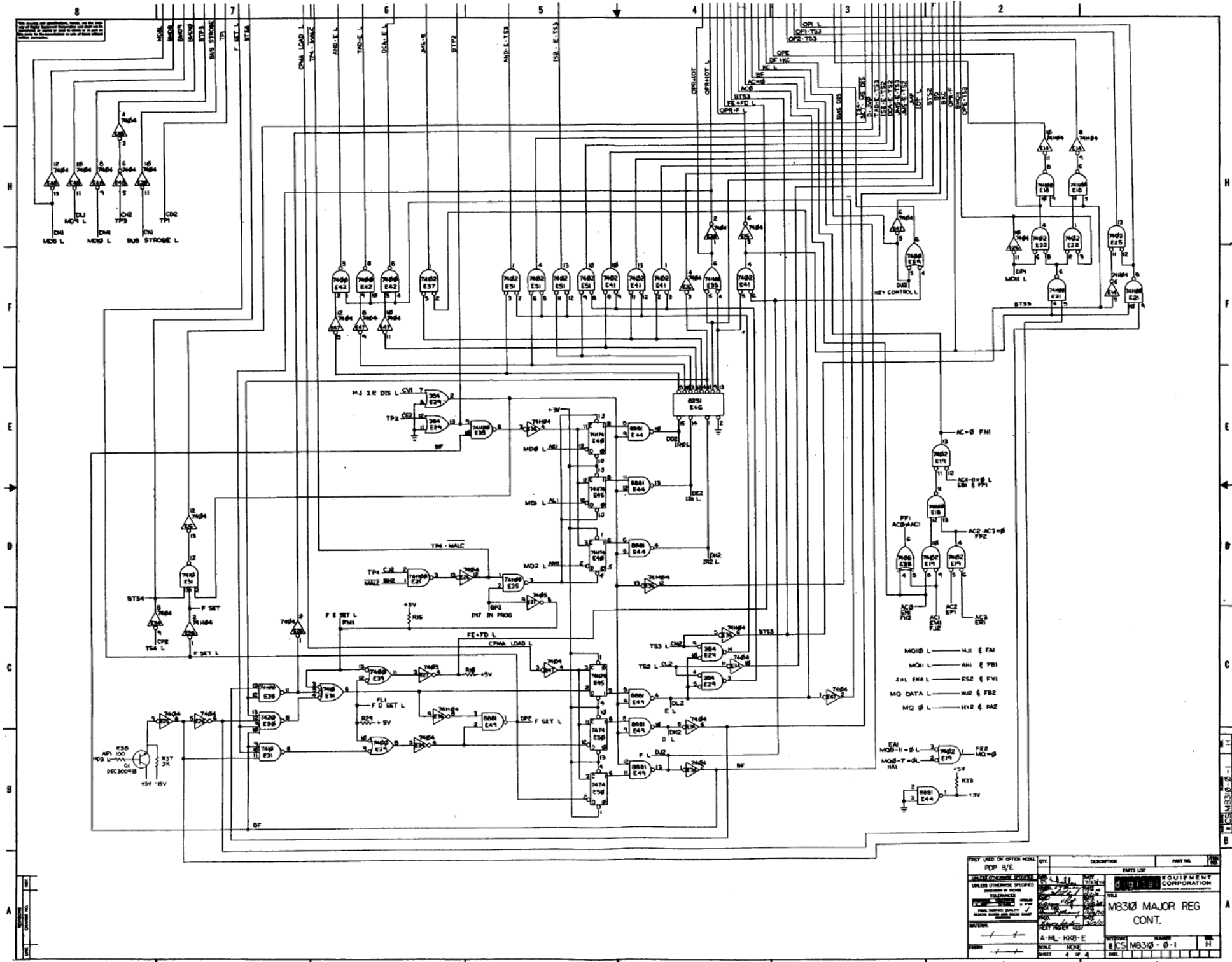
DEC NO. EA NO. REV. REV COLUMN. REV LIST.  
 D-W-K-K-B-E-g  
 E CS MB310-0-1  
 OF 4 OF 4



PART USED ON OTHER MODEL	QTY	DESCRIPTION	PART NO.
POP R/E			
EQUIPMENT CORPORATION			
M830 MAJOR REG. CONT.			
M830-0-1			
PAGE 2 OF 4			

M830-0-1





- AC-0 FHI
- AC-1-1-6 L
- AC-2-3-8 PFZ
- AC-3-1-8 PFZ
- AC-4-1-8 PFZ
- AC-5-1-8 PFZ
- AC-6-1-8 PFZ
- AC-7-1-8 PFZ
- AC-8-1-8 PFZ
- AC-9-1-8 PFZ
- AC-10-1-8 PFZ
- AC-11-1-8 PFZ
- AC-12-1-8 PFZ
- AC-13-1-8 PFZ
- AC-14-1-8 PFZ
- AC-15-1-8 PFZ
- AC-16-1-8 PFZ
- AC-17-1-8 PFZ
- AC-18-1-8 PFZ
- AC-19-1-8 PFZ
- AC-20-1-8 PFZ
- AC-21-1-8 PFZ
- AC-22-1-8 PFZ
- AC-23-1-8 PFZ
- AC-24-1-8 PFZ
- AC-25-1-8 PFZ
- AC-26-1-8 PFZ
- AC-27-1-8 PFZ
- AC-28-1-8 PFZ
- AC-29-1-8 PFZ
- AC-30-1-8 PFZ
- AC-31-1-8 PFZ
- AC-32-1-8 PFZ
- AC-33-1-8 PFZ
- AC-34-1-8 PFZ
- AC-35-1-8 PFZ
- AC-36-1-8 PFZ
- AC-37-1-8 PFZ
- AC-38-1-8 PFZ
- AC-39-1-8 PFZ
- AC-40-1-8 PFZ
- AC-41-1-8 PFZ
- AC-42-1-8 PFZ
- AC-43-1-8 PFZ
- AC-44-1-8 PFZ
- AC-45-1-8 PFZ
- AC-46-1-8 PFZ
- AC-47-1-8 PFZ
- AC-48-1-8 PFZ
- AC-49-1-8 PFZ
- AC-50-1-8 PFZ
- AC-51-1-8 PFZ
- AC-52-1-8 PFZ
- AC-53-1-8 PFZ
- AC-54-1-8 PFZ
- AC-55-1-8 PFZ
- AC-56-1-8 PFZ
- AC-57-1-8 PFZ
- AC-58-1-8 PFZ
- AC-59-1-8 PFZ
- AC-60-1-8 PFZ
- AC-61-1-8 PFZ
- AC-62-1-8 PFZ
- AC-63-1-8 PFZ
- AC-64-1-8 PFZ
- AC-65-1-8 PFZ
- AC-66-1-8 PFZ
- AC-67-1-8 PFZ
- AC-68-1-8 PFZ
- AC-69-1-8 PFZ
- AC-70-1-8 PFZ
- AC-71-1-8 PFZ
- AC-72-1-8 PFZ
- AC-73-1-8 PFZ
- AC-74-1-8 PFZ
- AC-75-1-8 PFZ
- AC-76-1-8 PFZ
- AC-77-1-8 PFZ
- AC-78-1-8 PFZ
- AC-79-1-8 PFZ
- AC-80-1-8 PFZ
- AC-81-1-8 PFZ
- AC-82-1-8 PFZ
- AC-83-1-8 PFZ
- AC-84-1-8 PFZ
- AC-85-1-8 PFZ
- AC-86-1-8 PFZ
- AC-87-1-8 PFZ
- AC-88-1-8 PFZ
- AC-89-1-8 PFZ
- AC-90-1-8 PFZ
- AC-91-1-8 PFZ
- AC-92-1-8 PFZ
- AC-93-1-8 PFZ
- AC-94-1-8 PFZ
- AC-95-1-8 PFZ
- AC-96-1-8 PFZ
- AC-97-1-8 PFZ
- AC-98-1-8 PFZ
- AC-99-1-8 PFZ
- AC-100-1-8 PFZ

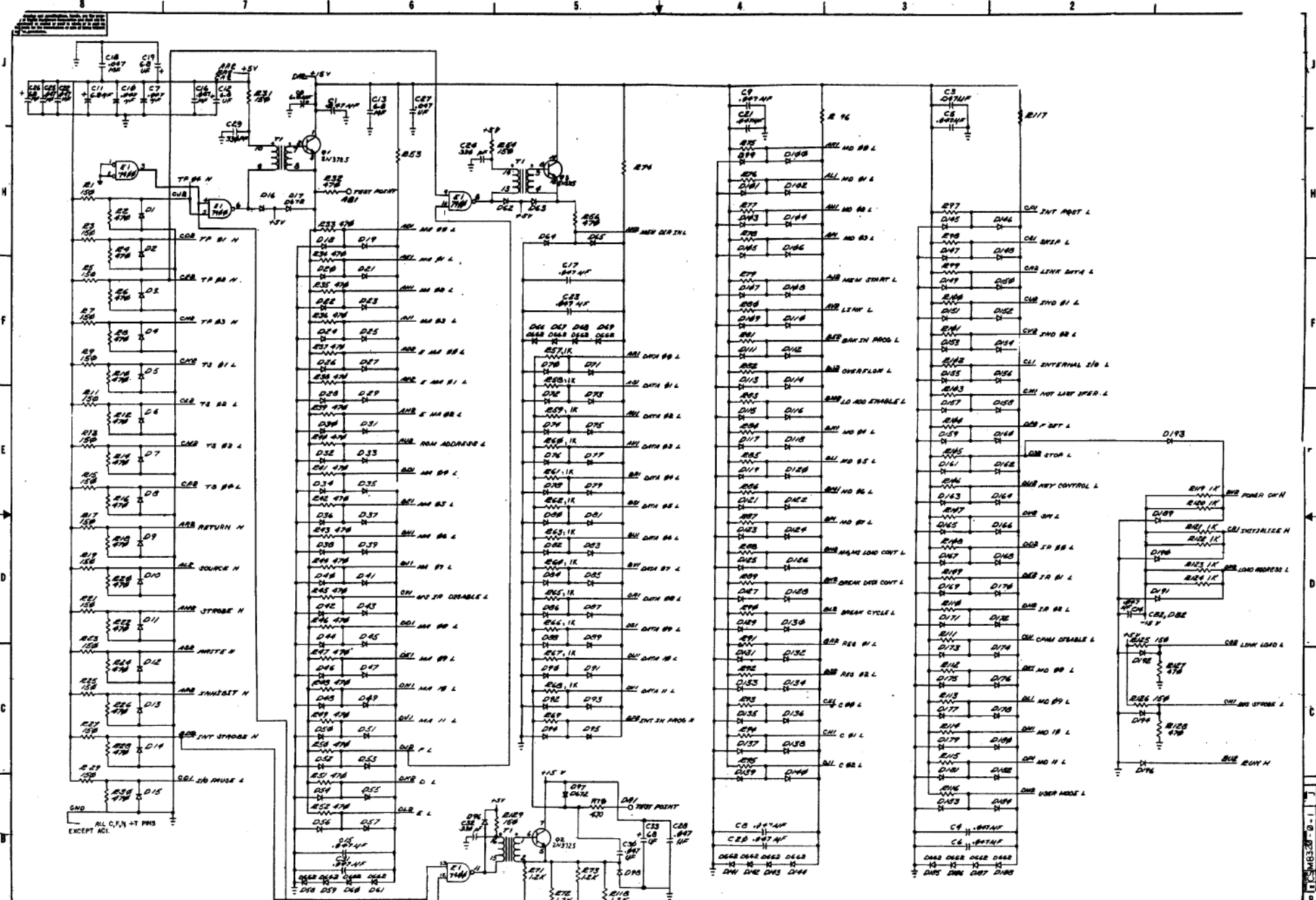
QTY	DESCRIPTION	PARTS LIST	PART NO.
1	7404	7404	7404
1	7400	7400	7400
1	7474	7474	7474
1	7475	7475	7475
1	7476	7476	7476
1	7402	7402	7402
1	7401	7401	7401
1	7403	7403	7403
1	7405	7405	7405
1	7406	7406	7406
1	7407	7407	7407
1	7408	7408	7408
1	7409	7409	7409
1	7410	7410	7410
1	7411	7411	7411
1	7412	7412	7412
1	7413	7413	7413
1	7414	7414	7414
1	7415	7415	7415
1	7416	7416	7416
1	7417	7417	7417
1	7418	7418	7418
1	7419	7419	7419
1	7420	7420	7420
1	7421	7421	7421
1	7422	7422	7422
1	7423	7423	7423
1	7424	7424	7424
1	7425	7425	7425
1	7426	7426	7426
1	7427	7427	7427
1	7428	7428	7428
1	7429	7429	7429
1	7430	7430	7430
1	7431	7431	7431
1	7432	7432	7432
1	7433	7433	7433
1	7434	7434	7434
1	7435	7435	7435
1	7436	7436	7436
1	7437	7437	7437
1	7438	7438	7438
1	7439	7439	7439
1	7440	7440	7440
1	7441	7441	7441
1	7442	7442	7442
1	7443	7443	7443
1	7444	7444	7444
1	7445	7445	7445
1	7446	7446	7446
1	7447	7447	7447
1	7448	7448	7448
1	7449	7449	7449
1	7450	7450	7450
1	7451	7451	7451
1	7452	7452	7452
1	7453	7453	7453
1	7454	7454	7454
1	7455	7455	7455
1	7456	7456	7456
1	7457	7457	7457
1	7458	7458	7458
1	7459	7459	7459
1	7460	7460	7460
1	7461	7461	7461
1	7462	7462	7462
1	7463	7463	7463
1	7464	7464	7464
1	7465	7465	7465
1	7466	7466	7466
1	7467	7467	7467
1	7468	7468	7468
1	7469	7469	7469
1	7470	7470	7470
1	7471	7471	7471
1	7472	7472	7472
1	7473	7473	7473
1	7474	7474	7474
1	7475	7475	7475
1	7476	7476	7476
1	7477	7477	7477
1	7478	7478	7478
1	7479	7479	7479
1	7480	7480	7480
1	7481	7481	7481
1	7482	7482	7482
1	7483	7483	7483
1	7484	7484	7484
1	7485	7485	7485
1	7486	7486	7486
1	7487	7487	7487
1	7488	7488	7488
1	7489	7489	7489
1	7490	7490	7490
1	7491	7491	7491
1	7492	7492	7492
1	7493	7493	7493
1	7494	7494	7494
1	7495	7495	7495
1	7496	7496	7496
1	7497	7497	7497
1	7498	7498	7498
1	7499	7499	7499
1	7500	7500	7500

M830 MAJOR REG  
 CONT.

A-M-KKB-E  
 CS M830-0-1  
 4 OF 4



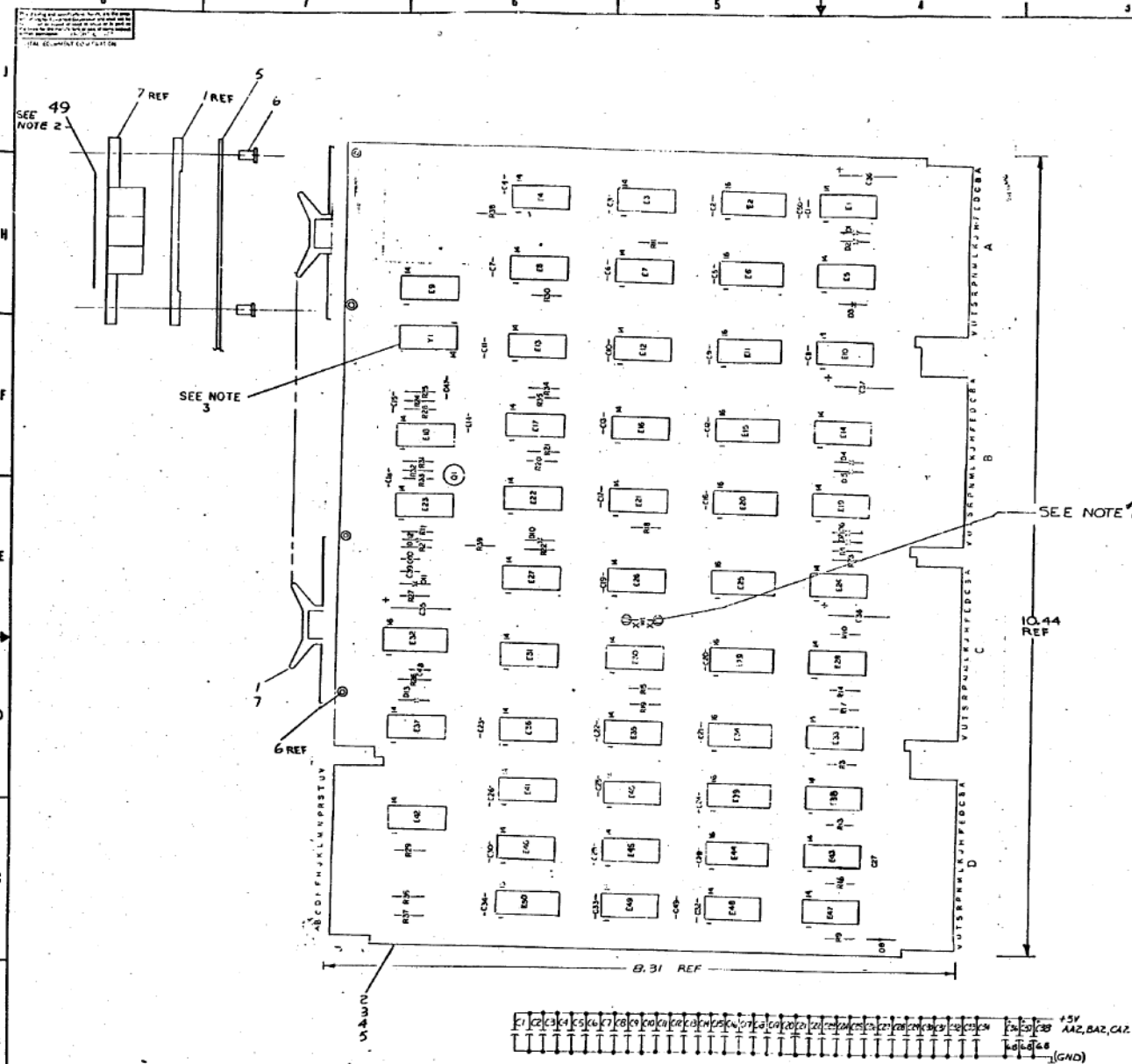




REV.	DESCRIPTION	DATE	BY
1	ISSUED FOR PRODUCTION	10-15-68	W. J. L.
2	REVISION	10-15-68	W. J. L.
3	REVISION	10-15-68	W. J. L.
4	REVISION	10-15-68	W. J. L.
5	REVISION	10-15-68	W. J. L.
6	REVISION	10-15-68	W. J. L.
7	REVISION	10-15-68	W. J. L.
8	REVISION	10-15-68	W. J. L.
9	REVISION	10-15-68	W. J. L.
10	REVISION	10-15-68	W. J. L.

FIRST USED ON: OPTIMIZER UNLESS OTHERWISE SPECIFIED DRAWN BY: W. J. L. CHECKED BY: W. J. L. DATE: 10-15-68 SCALE: 1:1 SHEET NO.: 1 OF: 1	EQUIPMENT CORPORATION BUS LOADS E.S. M8320-0-1
---	--



- NOTES:**
1. W1 (JUMPER) TO BE INSERTED BY CUSTOMER ONLY.
  2. THE STICKER READS AS FOLLOWS: MB330 ETCH D MAY BE REPLACED WITH ETCH C IF MACHINE USES ONLY CORE MEMORY, SEMICONDUCTOR MEMORIES MAB-F REQUIRE ETCH D OR LATER.
  3. WITH OSC. UP/DOWN, SO THAT PIN 1 IS CLOSEST TO THE FINGER. PIN 1 IS IDENTIFIED BY A SOLDER BLOB ON SIDE OF OSC. CAN.
  4. MB330-YB IS TO BE USED ONLY WITH THE MABF OPTION ONLY.
  5. THE YB VARIATION WILL BE CREATED BY INSTALLING ECO No. 5 MB330-00006 & MB330-00007 IN MB330 ETCH REV D OR LATER.

DEC 7419A	B	16
DEC 8257	B	16
DEC 5314	I	8
DEC 5380	I	8
DEC 5384	I	8

K TYPE: GND +5V

SEE NOTE 1

GND = AC2, AP, AH1, AN2, AT1, BC1, BC2, B71, CN2, BT1, BT2, CC1, CC2, CC3, CF1, CF2, CN, CT1, DC1, DF1, GN1, DT1, DT2.

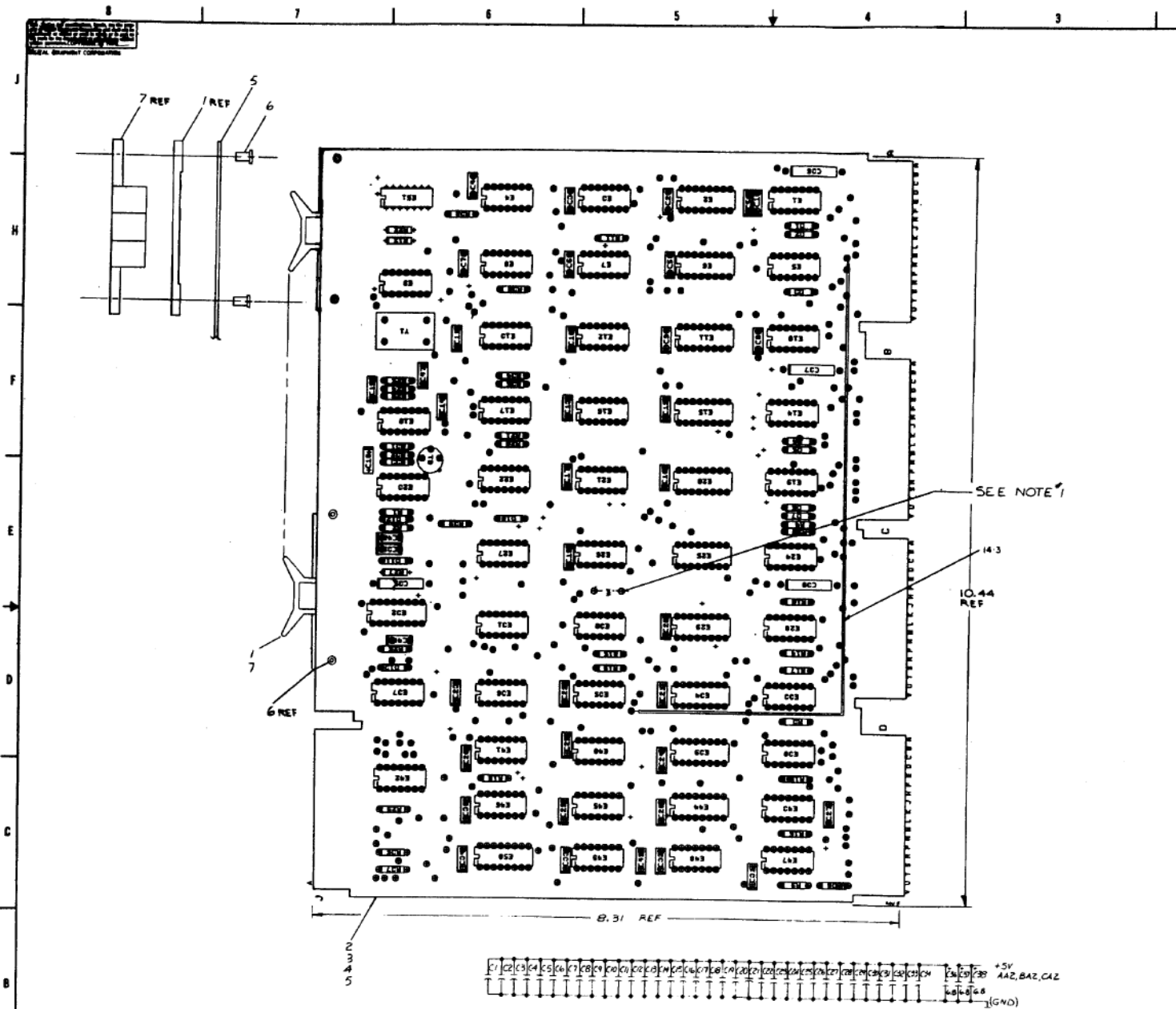
1	E27	IC DEC 7334	1810993	41
1	W1	WIRE #30 AWG	3101740-55	53
1	W1	OSC 80 MMS	181640-00	52
4	E1, E2, E30, E40	IC DEC 8516	1810548	51
1	E18	IC DEC 7410 G	1809331	50
1	A18, B18	MB330 REV STICKER	3611623	49
1	A18, B18	RES 1K 1/4W 5%	1800357	48
2	A18, B18	RES 1K 1/4W 5%	1800357	47
1	E27	IC DEC 7334	1810993	46
1	E15	IC DEC 5380	1810892	45
1	E4	IC DEC 5380	1810374	44
1	E50	IC DEC 8257B	1809374	43
1	E17	IC DEC 8801	1809702	42
1	E8	IC DEC 7411	1809267	41
1	E36, E37	IC DEC 8740	1809473	40
1	E16, E17, E18, E19, E20, E21, E22, E23, E24, E25, E26, E27, E28, E29, E30, E31, E32, E33, E34, E35, E36, E37, E38, E39, E40, E41, E42, E43, E44, E45, E46, E47, E48, E49	IC DEC 7410	1809474	39
1	E32	IC DEC 7412B	1809486	38
1	E33, E34, E35, E36, E37, E38, E39, E40, E41, E42, E43, E44, E45, E46, E47, E48, E49	IC DEC 7410	1809474	37
1	E32	IC DEC 7412B	1809486	36
1	E33, E34, E35, E36, E37, E38, E39, E40, E41, E42, E43, E44, E45, E46, E47, E48, E49	IC DEC 7410	1809474	35
1	E32	IC DEC 7412B	1809486	34
1	E33, E34, E35, E36, E37, E38, E39, E40, E41, E42, E43, E44, E45, E46, E47, E48, E49	IC DEC 7410	1809474	33
1	E32	IC DEC 7412B	1809486	32
1	E33, E34, E35, E36, E37, E38, E39, E40, E41, E42, E43, E44, E45, E46, E47, E48, E49	IC DEC 7410	1809474	31
1	E32	IC DEC 7412B	1809486	30
1	E33, E34, E35, E36, E37, E38, E39, E40, E41, E42, E43, E44, E45, E46, E47, E48, E49	IC DEC 7410	1809474	29
1	E32	IC DEC 7412B	1809486	28
1	E33, E34, E35, E36, E37, E38, E39, E40, E41, E42, E43, E44, E45, E46, E47, E48, E49	IC DEC 7410	1809474	27
1	E32	IC DEC 7412B	1809486	26
1	E33, E34, E35, E36, E37, E38, E39, E40, E41, E42, E43, E44, E45, E46, E47, E48, E49	IC DEC 7410	1809474	25
1	E32	IC DEC 7412B	1809486	24
1	E33, E34, E35, E36, E37, E38, E39, E40, E41, E42, E43, E44, E45, E46, E47, E48, E49	IC DEC 7410	1809474	23
1	E32	IC DEC 7412B	1809486	22
1	E33, E34, E35, E36, E37, E38, E39, E40, E41, E42, E43, E44, E45, E46, E47, E48, E49	IC DEC 7410	1809474	21
1	E32	IC DEC 7412B	1809486	20
1	E33, E34, E35, E36, E37, E38, E39, E40, E41, E42, E43, E44, E45, E46, E47, E48, E49	IC DEC 7410	1809474	19
1	E32	IC DEC 7412B	1809486	18
1	E33, E34, E35, E36, E37, E38, E39, E40, E41, E42, E43, E44, E45, E46, E47, E48, E49	IC DEC 7410	1809474	17
1	E32	IC DEC 7412B	1809486	16
1	E33, E34, E35, E36, E37, E38, E39, E40, E41, E42, E43, E44, E45, E46, E47, E48, E49	IC DEC 7410	1809474	15
1	E32	IC DEC 7412B	1809486	14
1	E33, E34, E35, E36, E37, E38, E39, E40, E41, E42, E43, E44, E45, E46, E47, E48, E49	IC DEC 7410	1809474	13
1	E32	IC DEC 7412B	1809486	12
1	E33, E34, E35, E36, E37, E38, E39, E40, E41, E42, E43, E44, E45, E46, E47, E48, E49	IC DEC 7410	1809474	11
1	E32	IC DEC 7412B	1809486	10
1	E33, E34, E35, E36, E37, E38, E39, E40, E41, E42, E43, E44, E45, E46, E47, E48, E49	IC DEC 7410	1809474	9
1	E32	IC DEC 7412B	1809486	8
1	E33, E34, E35, E36, E37, E38, E39, E40, E41, E42, E43, E44, E45, E46, E47, E48, E49	IC DEC 7410	1809474	7
1	E32	IC DEC 7412B	1809486	6
1	E33, E34, E35, E36, E37, E38, E39, E40, E41, E42, E43, E44, E45, E46, E47, E48, E49	IC DEC 7410	1809474	5
1	E32	IC DEC 7412B	1809486	4
1	E33, E34, E35, E36, E37, E38, E39, E40, E41, E42, E43, E44, E45, E46, E47, E48, E49	IC DEC 7410	1809474	3
1	E32	IC DEC 7412B	1809486	2
1	E33, E34, E35, E36, E37, E38, E39, E40, E41, E42, E43, E44, E45, E46, E47, E48, E49	IC DEC 7410	1809474	1

DEC NO.	EIA NO.	DEC NO.	EIA NO.
DEC 3206	2N3640	DEC 3206	2N3640
DEC 664	1N 3630	DEC 664	1N 3630

SEMICONDUCTOR VERSION CHART

**TIMING GENERATOR**

MODEL: MB330-YB-1 N



NOTES:  
 1. WI (JUMPER) TO BE INSERTED BY CUSTOMER ONLY

DEC 74194	B	H
DEC 825	B	H
DEC 5314	I	B
DEC 5390	I	B
DEC 5394	I	B

SEE NOTE 1

SND - AC2, AF1, AN1, AN2, AT1, BC1, BC2  
 BF1, BN2, BT1, BT2, CC1, CC2, CF1,  
 CF2, CM1, CT1, DC1, DF1, DN1, DT1, DT2.

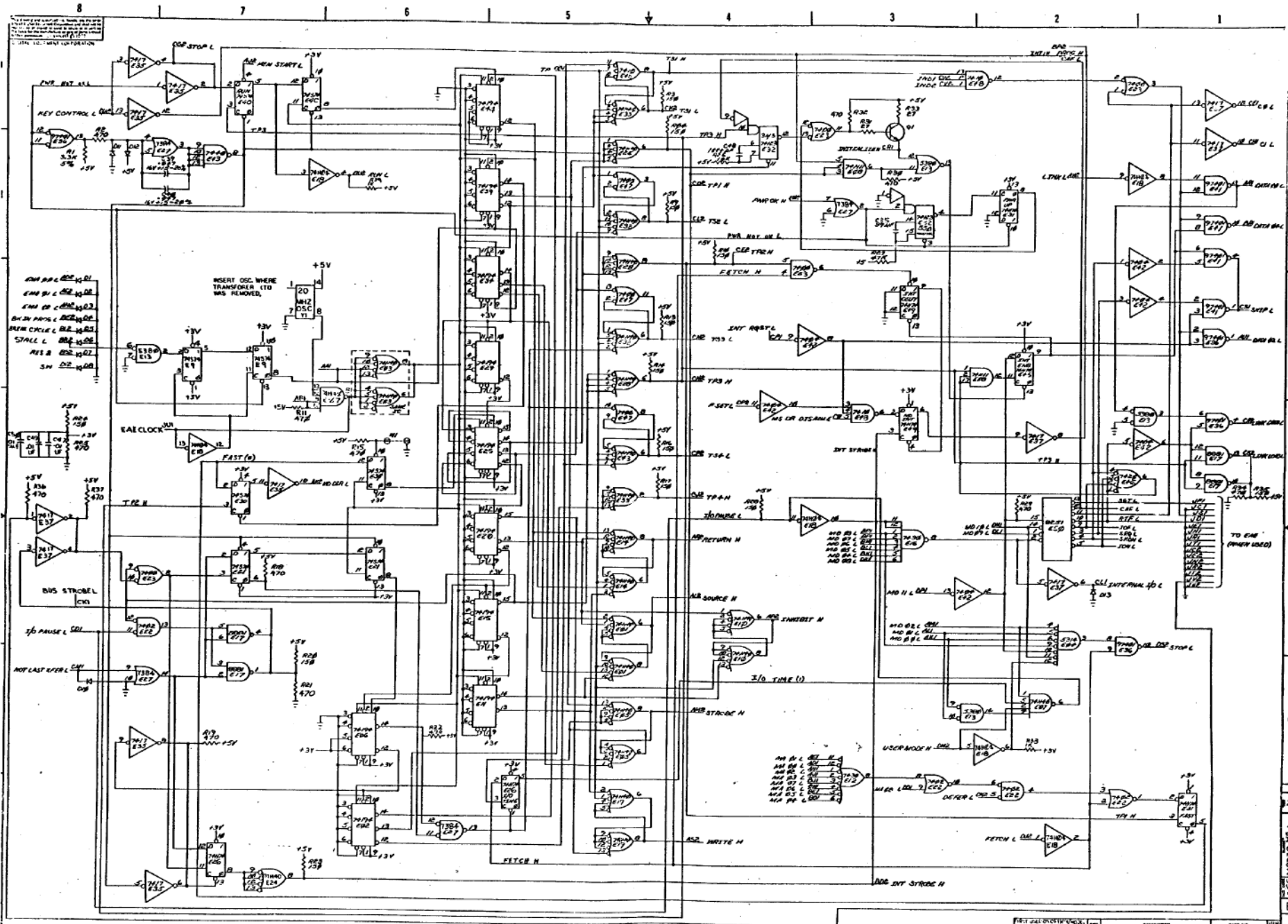
1	2	3	4	5	6	7	8	9	10	11	12	13	14	15	16	17	18	19	20	21	22	23	24	25	26	27	28	29	30	31	32	33	34	35	36	37	38	39	40	41	42	43	44	45	46	47	48	49	50	51	52	53	54	55	56	57	58	59	60	61	62	63	64	65	66	67	68	69	70	71	72	73	74	75	76	77	78	79	80	81	82	83	84	85	86	87	88	89	90	91	92	93	94	95	96	97	98	99	100
---	---	---	---	---	---	---	---	---	----	----	----	----	----	----	----	----	----	----	----	----	----	----	----	----	----	----	----	----	----	----	----	----	----	----	----	----	----	----	----	----	----	----	----	----	----	----	----	----	----	----	----	----	----	----	----	----	----	----	----	----	----	----	----	----	----	----	----	----	----	----	----	----	----	----	----	----	----	----	----	----	----	----	----	----	----	----	----	----	----	----	----	----	----	----	----	----	----	----	-----

REF	REF DESIGNATION	DESCRIPTION	REV NO
1	WI	WIRE 30 AWG	9105740-58 47
2	E47E5	IC DEC 7400	1910532-00 46
1	122	IC DEC 7584	190593 45
1	VI	OSC 20 MHZ	181440-00 03
1	128	IC DEC 7452 &	1910544 51
2	AM 431	RES 1K 1/4W 5%	1800363 44
2	129	SPLIT LINE	9008718 17
1	173	IC DEC 8646	1910576 43
1	174	IC DEC 8881	1910577 42
1	175	IC DEC 8881	1910578 41
1	176	IC DEC 8881	1910579 40
1	177	IC DEC 8881	1910580 39
1	178	IC DEC 8881	1910581 38
1	179	IC DEC 8881	1910582 37
1	180	IC DEC 8881	1910583 36
1	181	IC DEC 8881	1910584 35
1	182	IC DEC 8881	1910585 34
1	183	IC DEC 8881	1910586 33
1	184	IC DEC 8881	1910587 32
1	185	IC DEC 8881	1910588 31
1	186	IC DEC 8881	1910589 30
1	187	IC DEC 8881	1910590 29
1	188	IC DEC 8881	1910591 28
1	189	IC DEC 8881	1910592 27
1	190	IC DEC 8881	1910593 26
1	191	IC DEC 8881	1910594 25
1	192	IC DEC 8881	1910595 24
1	193	IC DEC 8881	1910596 23
1	194	IC DEC 8881	1910597 22
1	195	IC DEC 8881	1910598 21
1	196	IC DEC 8881	1910599 20
1	197	IC DEC 8881	1910600 19
1	198	IC DEC 8881	1910601 18
1	199	IC DEC 8881	1910602 17
1	200	IC DEC 8881	1910603 16
1	201	IC DEC 8881	1910604 15
1	202	IC DEC 8881	1910605 14
1	203	IC DEC 8881	1910606 13
1	204	IC DEC 8881	1910607 12
1	205	IC DEC 8881	1910608 11
1	206	IC DEC 8881	1910609 10
1	207	IC DEC 8881	1910610 9
1	208	IC DEC 8881	1910611 8
1	209	IC DEC 8881	1910612 7
1	210	IC DEC 8881	1910613 6
1	211	IC DEC 8881	1910614 5
1	212	IC DEC 8881	1910615 4
1	213	IC DEC 8881	1910616 3
1	214	IC DEC 8881	1910617 2
1	215	IC DEC 8881	1910618 1

DEC 5098	2V3096	DEC 5098	2V3096
DEC 5098	2V3096	DEC 5098	2V3096

EQUIPMENT CORPORATION  
 TIMING GENERATOR  
 EES M8330-0-1 R





REV.	DESCRIPTION	DATE	BY
1	MR. F	1973 10 17	
2	REVISION		
3			
4			
5			
6			
7			
8			

TITLE <b>TIMING GENERATOR</b>	PROJECT MR. F
DRAWN BY [Signature]	CHECKED BY [Signature]
DATE 1973 10 17	EQUIPMENT CORPORATION
PART NO. M9330-101	REV. 1