

EXPLORER 85

LEVEL C ASSEMBLY MANUAL

COPYRIGHT © 1979

BY NETRONICS RESEARCH AND DEVELOPMENT LTD.

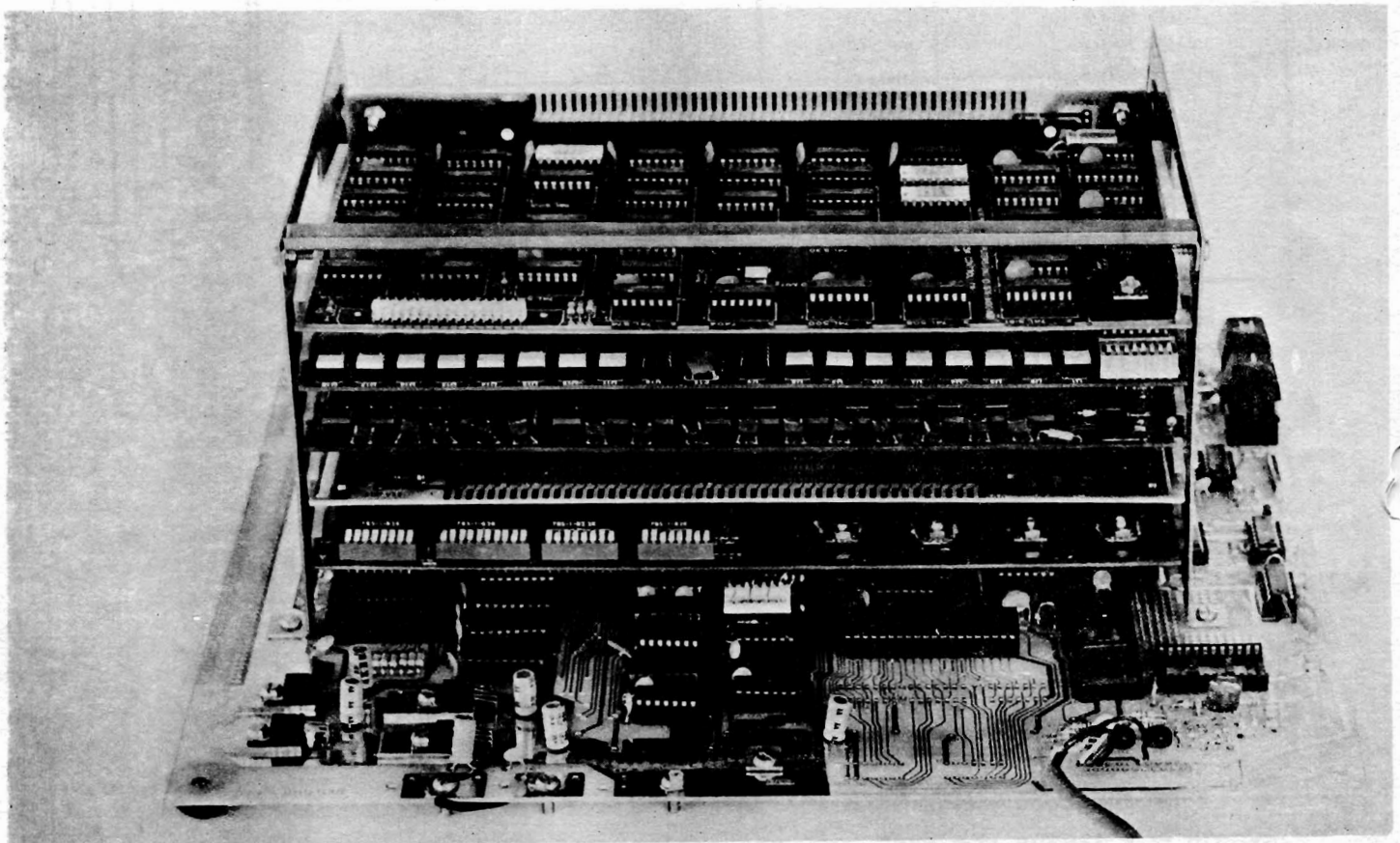
RT.202 NEW MILFORD, CT 06776

ALL RIGHTS RESERVED

SPECIFICATIONS

The addition of Level C increases the number of S100 boards accepted by the Explorer Motherboard from 2 to 6 plus adds a provision for a troubleshooting socket which allows access to both sides of an S100 board under test. The expansion super structure mounts directly on the Explorer 85 Motherboard.

EXPLORER 85
LEVEL C ASSEMBLY MANUAL



Check your kit against the following parts list:

<u>DESCRIPTION</u>	<u>QUANTITY</u>
S100 Expander PC Board	1
Left side mounting bracket 5" x 6 5/8"	1
Right side mounting bracket 5" x 6 5/8"	1
Rear support bracket 10 1/8" x 1/2"	1
Expander PC Board mounting brackets	2
Screw #6-32 x 3/8	18
Nut #6-32	18
S100 Board guides (white plastic)	12

NOTE: 100 Pin Connectors are not supplied.

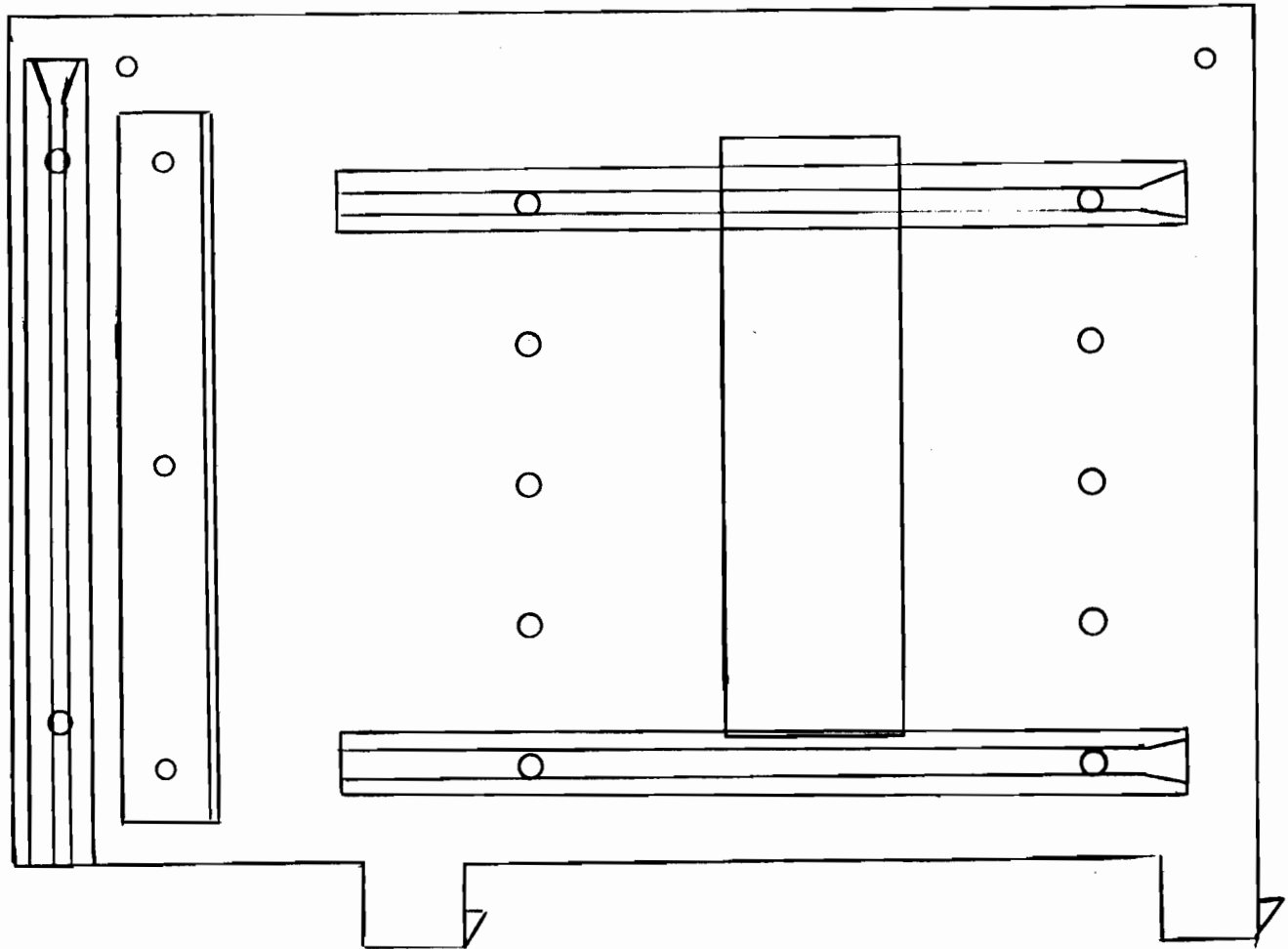
ASSEMBLY INSTRUCTIONS

All Level B components should be installed and tested prior to installing Level C. S100 Bus Connector J-3 must also be installed on the Mother Board.

- (8) 1. Install as many 100 pin connectors as required on the S100 Expander PC board. They are to be installed on the front side of the board and soldered on the back side (Note solder mask on back side of board).
- (10) 2. Note that the top edge of the S100 Expander board (side furthest away from the gold plated tabs) also has provisions to mount a test socket. To install this socket simply bend the S100 terminal pins about 20° toward each other and carefully solder as shown.



- (✓) 3. Install the 12 plastic card guides into the holes provided on the left and right side mounting brackets as shown. Note position of tapered entry on card guide.



- () 4. Using (6) 6-32 x 3/8 screws and nuts secure the Expander PC Board mounting brackets (smaller side) to the left and right side mounting brackets as shown. Do not fully tighten at this time.
- () 5. Install the left and right side mounting brackets onto the Mother Board using (4) screws and nuts. Do not fully tighten at this time. (See Level B Assembly drawing)
- () 6. Install the S100 extender PC Board into the J-3 socket on the Mother Board.
- () 7. Secure the extender PC Board to the support brackets using (6) 6-32 screws and nuts. Do not fully tightened at this time.
- () 8. Install the rear support bracket using (2) 6-32 screws and nuts.
- () 9. Insert one or more S100 Boards into the card cage and adjust the brackets so that there is a minimum of clearance between the S100 Boards and the card cage.
- () 10. Tighten all screws and nuts.
- () 11. It is now necessary to make the power supply connection to the S100 extender board. Using 3" lengths of wire connect the (-16) terminal on the extender board to the (-16) terminal on the Mother Board. Similarly install the (+16) and (+8) wires. There is no need for a ground wire to the extender board.