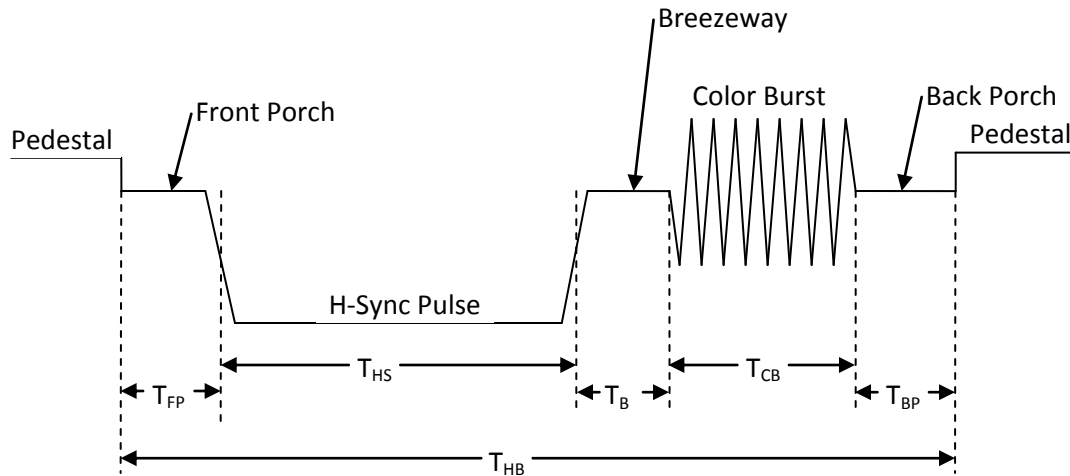


# NTSC Timing Compared to Cromemco TV Dazzler Timing

## Horizontal Timing



Symbol	Component	NTSC Spec		TV Dazzler	
		Time/Freq	Color Burst Cycles	Time/Freq	Color Burst Cycles
$F_{CB}$	Color Burst Frequency	3.579545 MHz	1	3.579545 MHz	1
$F_H$	Horizontal Frequency	15.73426 KHz	227.5	15.98 KHz	224
$T_{HB}$	Horizontal Blanking Time	10.7 to 11.1 $\mu$ S	38.3-39.7	26.82 $\mu$ S	96
$T_{FP}$	Front Porch Time	1.4 to 1.6 $\mu$ S	5.1-5.7	8.93 $\mu$ S	32
$T_{HS}$	Horizontal Sync Pulse Width	4.6 to 4.8 $\mu$ S	16.5-17.18	4.74 $\mu$ S	17
$T_B$	Breezeway Time	0.6 $\mu$ S	2.15	0	0
$T_{CB}$	Color Burst Width	2.5 $\mu$ S	9	4.47 $\mu$ S	16
$T_{BP}$	Back Porch Time	1.6 $\mu$ S	5.73	8.66 $\mu$ S	31