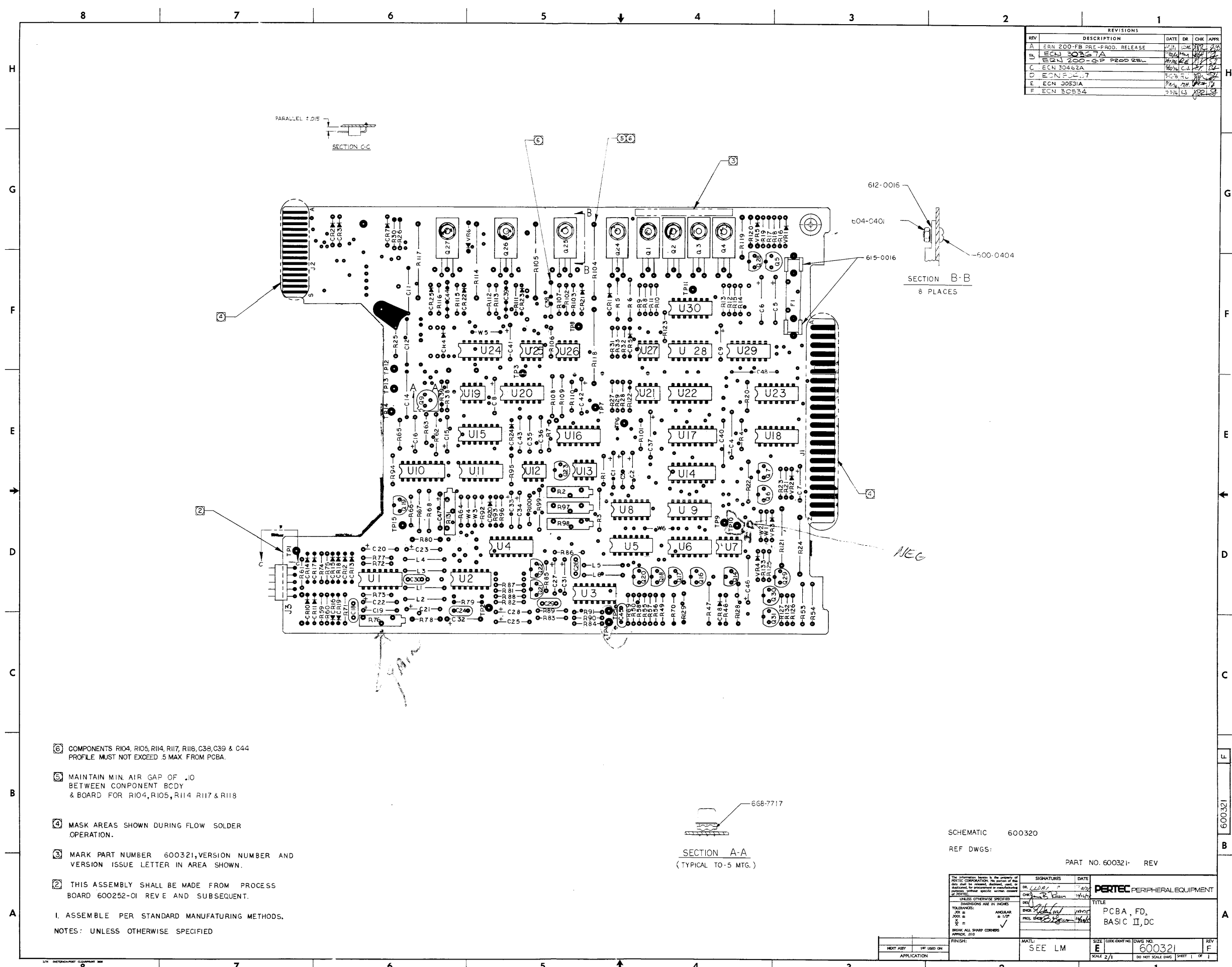


REVISIONS					
REV	DESCRIPTION	DATE	DR	CHK	APP
A	ERN 200-FB PRE-PROD. RELEASE	1/17/64	WJ	WJ	WJ
B	ECN 30367A	1/24/64	WJ	WJ	WJ
C	ERN 200-GP PROD REL	1/24/64	WJ	WJ	WJ
D	ECN 30462A	1/24/64	WJ	WJ	WJ
E	ECN 30531A	2/16/64	WJ	WJ	WJ
F	ECN 30554	2/16/64	WJ	WJ	WJ



- ⑥ COMPONENTS R104, R105, R114, R117, R118, C38, C39 & C44 PROFILE MUST NOT EXCEED .5 MAX. FROM PCBA.
 - ⑤ MAINTAIN MIN. AIR GAP OF .10 BETWEEN COMPONENT BCDY & BOARD FOR R104, R105, R114, R117 & R118
 - ④ MASK AREAS SHOWN DURING FLOW SOLDER OPERATION.
 - ③ MARK PART NUMBER 600321, VERSION NUMBER AND VERSION ISSUE LETTER IN AREA SHOWN.
 - ② THIS ASSEMBLY SHALL BE MADE FROM PROCESS BOARD 600252-01 REV E AND SUBSEQUENT.
- I. ASSEMBLE PER STANDARD MANUFACTURING METHODS.
NOTES: UNLESS OTHERWISE SPECIFIED

SCHEMATIC 600320
REF DWGS:
PART NO. 600321- REV

SIGNATURES		DATE
DR: <i>WJ</i>		1/17/64
CHK: <i>WJ</i>		1/17/64

PERTEC PERIPHERAL EQUIPMENT
TITLE: PCBA, FD, BASIC II, DC

MATERIAL	SIZE	CODE	QTY	DWG NO.	REV
SEE LM	E			600321	F

SCALE 2/1 DO NOT SCALE DWG PART 1 OF 1