

TABLE I (1)

PART NO.	REFERENCE DESIGNATION
100-1015	R27, 28, 29
100-1025	R2, 8, 20, 21, 22, 26, 33, 36, 47, 50, 57, 73, 88, 89, 116
100-1035	R65, 66, 77, 95, 99
100-1045	R70, 71
100-1055	R105
100-1215	R16
100-1515	R15, 59, 61 100, 106, 108
100-1525	R4
100-1535	R23
100-1815	R14, 17, 114
100-1825	R7
100-2215	R30, 32, 47, 49, 112, 113
100-2225	R79, 80, 82, 85, 87
100-2235	R6, 63, 64, 69, 5
100-2715	R19
100-2725	R31, 34
100-2735	R67
100-2745	R52
100-4705	R10, 68
100-4715	R3, 41, 42, 43, 44, 81
100-4725	R25, 53
100-4735	R97, 100
100-4745	R51
100-6806	R60, 62, 104, 107, 109
100-6815	R 84, 86
100-6825	R54, 76, 83, 85
100-6215	R9, 24, 58
100-6225	R96, 98
101-1015	R76
101-1215	R75, 110, 111
101-1525	R90
101-1825	R93, 94
101-2225	R18
101-2725	R13
100-1015	R11, 12
104-1621	R92
104-2152	R37
104-2671	R56
104-5621	R35
104-6191	R1, 91
121-2020	R39, 48
121-2030	R25, 38
123-5020	R115
130-1015	C15, 19
130-3115	C27
130-4706	C16
130-4715	C42
130-5615	C2, 36
130-7515	C34
131-1030	C21, 41, 66
131-1520	C50

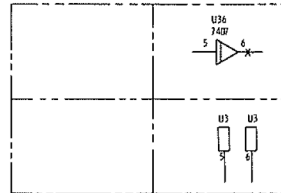
TABLE I (CONT. 1)

PART NO.	REFERENCE DESIGNATION
130-1020	C12, 20, 23, 29, 38
130-1055	C13, 17, 18, 22, 43
130-1045	C1
130-2244	C4, 6, 9, 10, 11, 24, 25, 26, 28, 30, 31, 49, 41, 47, 48, 49
130-2262	C8
130-4751	C14, 37
130-4755	C7, 32, 33, 39
130-4762	C5, 3
200-3100	Q20, 21
200-3120	Q18, 19
200-4123	Q1, 2, 3, 4, 5, 6, 11, 15
200-4125	Q8, 9, 10, 12, 13, 14, 16
200-5321	Q22
300-4002	CR3, 4, 18, 21, 22, 23
300-4446	CR1, 2, 5, 6, 7, 8, 9, 10, 11, 12, 13, 14, 15, 16, 17
330-0515	VR2
330-0685	VR5
331-0335	VR3, 4
331-1605	VR1
400-0555	U27, 29
400-0592	U25, 34
400-5558	U41
515-1015	L1, 2, 5, 6
515-2405	L3, 4
700-4127	U23, 24, 33
700-4123	U13
700-4221	U5, 18, 37
700-5452	U30
700-7420	U7, 16, 19, 38
700-7402	U10, 11, 12, 32
700-7404	U14, 15, 31
700-7426	U35
700-7427	U36
700-7410	U20
700-7414	U28
700-7416	U40
700-7419	U21
700-7438	U11, 8, 9
700-7450	U39
700-7474	U6
700-7476	U22, 26
700-8020	U17

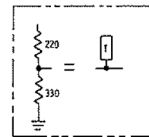
TABLE II (2)

ASSEMBLY VERSION NUMBER	VERSION CHARACTERISTIC	Q7									
		204-3999	VALUE	PART NO.	100-2225	100-1515	100-4576	131-1703	300-4002	200-5321	
600266-01	SINGLE DENSITY	OMIT	1K	100-1025	OMIT	USE	USE	USE	USE	USE	
600266-02	SINGLE/DOUBLE DENSITY	USE	2.2K	100-2225	USE	USE	USE	USE	USE	USE	
600266-03	SINGLE/DOUBLE DENSITY (1-12)-15V	USE	2.2K	100-2225	USE	OMIT	OMIT	OMIT	OMIT	OMIT	

TABLE III (10)



TYPICAL



REFERENCE DESIGNATIONS

LAST USED	NOT USED	DELETED
C50	C35	
CR23	CR20	
L6		
Q22		
R116	R72	
TP17		
U41		
VR5		
W40	W35	

REV	DESCRIPTION	DATE	BY	CHK	APP
A	REV 300-108 FOR PIANO BELLS	11/77	MM	MM	MM
B	ECN 30440	11/77	MM	MM	MM
C	ECN 30000-M PROD GR	11/77	MM	MM	MM
D	ECN 30477	11/77	MM	MM	MM
E	ECN 30487	11/77	MM	MM	MM
F	ECN 30513	11/77	MM	MM	MM
G	ECN 30521	11/77	MM	MM	MM

TABLE IV (12)

DRIVE POSITION	INTERFACE SELECTION		
	ISL1	IHL0	IRDY
1	0 = W6	0 = W7	0 = W22
2	1 = W5	1 = W8	1 = W21
3	2 = W4	2 = W9	2 = W20
4	3 = W3	3 = W10	3 = W19

- U2, U3 and U4 ARE PART NO. 120-0001 WHEN INSTALLED.
- W1 THRU W40 ARE PART NO. 100-0005. THE USAGE OF THESE JUMPERS WILL BE DETERMINED AT THE TOP ASSEMBLY LEVEL.
- LOGIC GROUND IS DENOTED BY SYMBOL. ANALOG GROUND IS DENOTED BY SYMBOL.
- THIS PCBA IS CONFIGURED TO RESPOND TO COMMANDS SELECTED FOR DRIVE POSITION NUMBER 1. TO CONFIGURE FOR OTHER POSITIONS SEE TABLE IV FOR JUMPER REQUIREMENTS.
- SIGNALS ARE CROSS-REFERENCED BETWEEN SHEETS AND WITHIN A SHEET BY NUMBERS APPEARING UNDER THE ASSOCIATED LOGIC TERM ALPHANUMERIC. THE FIRST NO. IS THE SHEET NO. AND THE SECOND NO. IS THE ZONE NO.
- FOR SPARE LOGIC ELEMENTS, SEE TABLE III.
- PIN 7 OF 14 PIN I.C.'S IS LOGIC GROUND.
- PIN 14 OF 14 PIN I.C.'S IS +5V.
- PIN 13 OF 7476 IS LOGIC GROUND.
- PIN 5 OF 7476 IS +5V.
- PIN 8 OF 10 PIN I.C.'S IS LOGIC GROUND.
- PIN 10 OF 16 PIN I.C.'S IS +5V.
- DIODES ARE 1N4148.
- PNP TRANSISTORS ARE 2N4125
- NPN TRANSISTORS ARE 2N4123
- CAPACITOR VALUES ARE IN MICROFARADS, 20%, 20V.
- RESISTOR VALUES ARE IN OHMS, 5%, 1/4W.
- (RESERVED).
- FOR VALUE, PART NUMBER AND USAGE OF COMPONENTS AFFECTED BY VERSION NUMBER SEE TABLE II.
- FOR PART NUMBER OF COMPONENTS NOT AFFECTED BY VERSION NO. SEE TABLE II.

NOTES UNLESS OTHERWISE SPECIFIED
 ASSEMBLY NO. 600266
 SPECIFICATION 600269
 REFERENCE DRAWINGS

THE INFORMATION ON THIS SHEET IS THE PROPERTY OF PERTEC CORPORATION. IT IS LOANED TO YOU BY THE PERTEC CORPORATION. IT IS NOT TO BE REPRODUCED OR TRANSMITTED IN ANY FORM OR BY ANY MEANS, ELECTRONIC OR MECHANICAL, INCLUDING PHOTOCOPYING, RECORDING, OR BY ANY INFORMATION STORAGE AND RETRIEVAL SYSTEM.	SIGNATURE: <i>[Signature]</i> DATE: 11/77
DESIGNED BY: <i>[Signature]</i> CHECKED BY: <i>[Signature]</i>	DRAWN BY: <i>[Signature]</i> DATE: 11/77
APPROVED BY: <i>[Signature]</i> DATE: 11/77	TITLE: SCHEMATIC F D BASIC II A
PART NO. 600265	REV. E

600265 E

