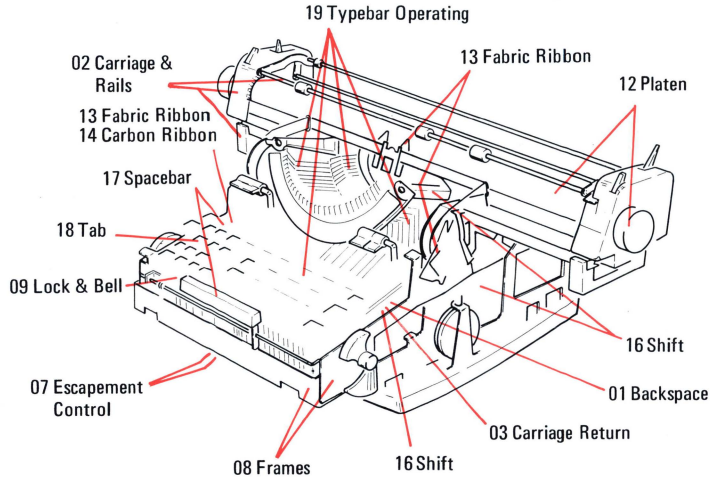




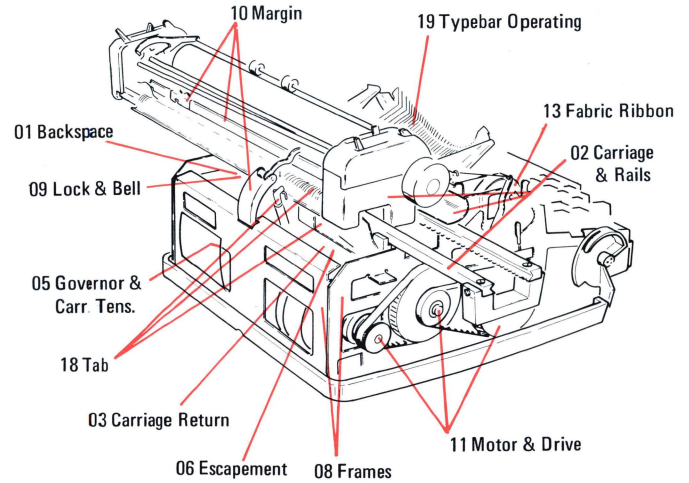
Typebar Typewriter

Parts Manual

Model A
Model B



(Front View)



(Rear View)

Covers	04
Carbon Ribbon	14

**IBM MODEL A & MODEL B TYPEWRITERS
CONTENTS
(Alphabetical)**

Mechanism	Mech Code	Page	Mechanism	Mech Code	Page
MODEL A1-A4 & MODEL B1-B4			SPECIAL MACHINES & ATTACHMENTS		
<i>Backspace</i>	01	3	<i>Cardholding Platen</i>	40	26
<i>Carriage & Rails (US)</i>	02	4	<i>Checkwriter</i>	41	26
<i>Carriage & Rails (WT)</i>	02	6	<i>Clamptype Waybill Platen</i>	42	27
<i>Carriage Return</i>	03	6	<i>Decimal Tabulation</i>	30	18
<i>Covers</i>	04	8	<i>Dual Purpose Platen</i>	43	28
<i>Escapement</i>	06	9	<i>Electronic Tab</i>	44	28
<i>Escapement Control</i>	07	10	<i>Formscarrier</i>	46	30
<i>Frames</i>	08	11	<i>Formsline Selector</i>	45	30
<i>Governor & Carriage Tension</i>	05	9	<i>Handicapped Attachment</i>	60	34
<i>Keyboard Lock & Bell</i>	09	11	<i>Hektowriter</i>	31	20
<i>Margin</i>	10	12	<i>I/O Writer</i>	32	22
<i>Motor & Drive</i>	11	12	<i>Leading Edge Gauge</i>	47	31
<i>Motor & V-Belt Drive</i>	11	13	<i>LP Formswriter</i>	33	23
<i>Platen</i>	12	13	<i>Palm Tab</i>	48	31
<i>Ribbon</i>			<i>Partial Carriage Return</i>	34	24
<i>Carbon Ribbon</i>	14	14	<i>Pinfeed Lift Platen</i>	50	32
<i>Fabric Ribbon</i>	13	14	<i>Pinfeed Platen</i>	49	32
<i>Proportional Feed</i>	14	15	<i>Stroke Counter</i>	51	33
<i>Shift</i>	16	15	<i>Toll Biller</i>	35	25
<i>Spacebar</i>	17	16	<i>Visible Index Platen</i>	52	33
<i>Tabulation</i>	18	17			
<i>Typebar Operating</i>	19	18			
			CHARTS & INTRODUCTION		
			<i>Cause Of Failure Codes</i>	37	
			<i>Introduction</i>	2	
			<i>Machine Identification Code</i>	37	
			<i>Platen Indexing Chart</i>	12	35
			<i>Product Codes</i>	37	

PARTS MANUAL INTRODUCTION

This manual is written for both US and World Trade usage. It contains parts information for the following products:

PRODUCT NAME	ID CODE	PROD. CODE
Model A Typewriter	A1	11
Model A "Executive" Typewriter	A4	11
Model B Typewriter	B1	12
Model B "Executive" Typewriter	B4	12
Model B Input/Output Typewriter	B I/O	14

This manual contains parts drawings of mechanisms, reference numbers and other special information. It must be used with a separate part number/price list manual which contains reference numbers, part numbers, part descriptions and prices.

Mechanism Identification

The headline of each page shows the product name, identification code and product code covered on that page. The headline of each frame (two frames per page) shows the mechanism name and the mechanism code covered in that frame. Some frames will show a model identification code after the mechanism name. Some mechanisms require more than one frame. However, each mechanism consists of a group of parts that work together to perform a function.

Part Identification

Red numbers indicate the reference number of a part, a bill of material (B/M) or an assembly.

Red blocks within a frame indicate either one, or a combination of more than one of the following:

- Differences between the models (A1, A4, B1, B4 or B I/O).
- Different levels within the same model, mode or size.
- Field replacement parts.
- Bill of material (B/M) or assemblies (shown with a description – parts shown in the drawing).
- World Trade applications or differences.

If different level(s) exist, which can be used for all models, modes or sizes, only the newest level is shown in the drawing. However, the part number/price list manual will show all level parts.

Some parts are shown for assembly purposes only and do not show a reference number. Replace these parts by ordering either the assembly or a later level part.

Parts Ordering

Locate the mechanism in which the part functions by using the contents page. Note the mechanism code, find the part in the drawing and note the reference number. Use this mechanism code/reference number to locate the part number and price in the part number/price list manual.

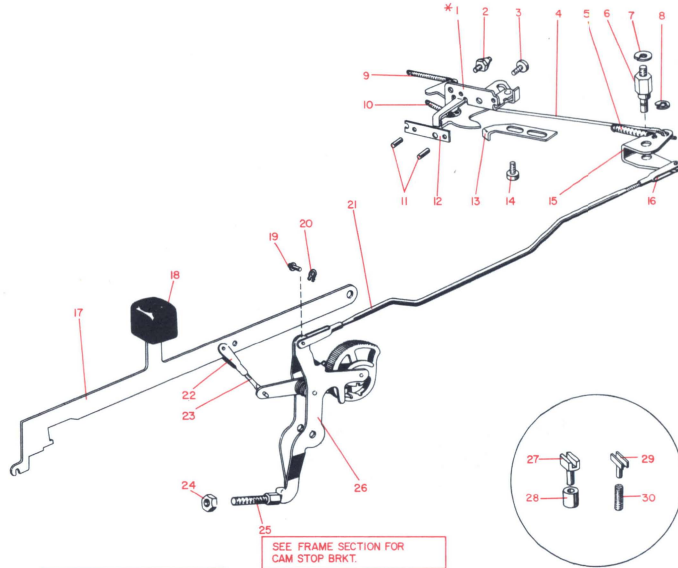
World Trade should use the country's procedures to find the prices.

Features and devices (MESs) or specification changes (SERs) wished by the customer must be ordered through CE management and branch office sales.

Replacement parts for features, devices and SERs not shown in the parts catalog must also be ordered through CE management and branch office sales.

BACKSPACE
(MODEL A1, MODEL B1)

MECH. CODE
01

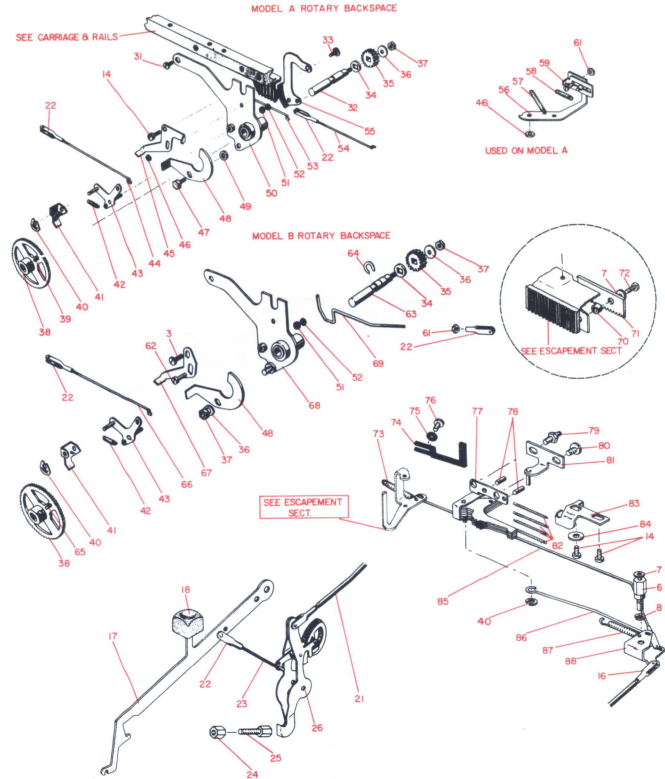


* ON EARLY MODEL "B" E.T'S, IT IS NECESSARY TO ORDER CR-TAB INTERLOCK P/N 1110505

SEE FRAME SECTION FOR CAM STOP BRKT.
SEE TYPEBAR OPERATING FOR CAM FULCRUM WIRE

BACKSPACE
(MODEL A4, MODEL B4)

MECH. CODE
01



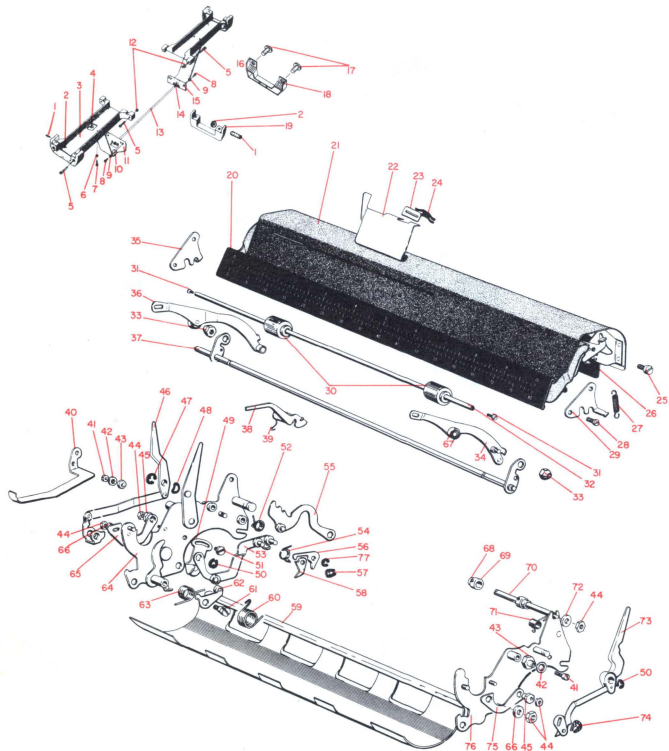
SEE ESCAPEMENT SECT

MECH. CODE

02

CARRIAGE & RAILS

(MODEL B1-B4)

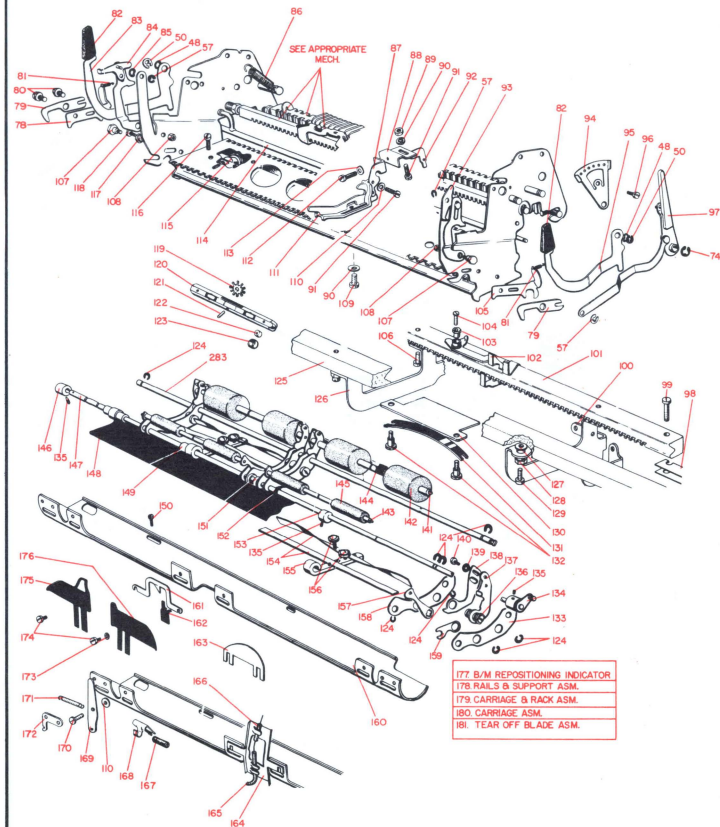


MECH. CODE

02

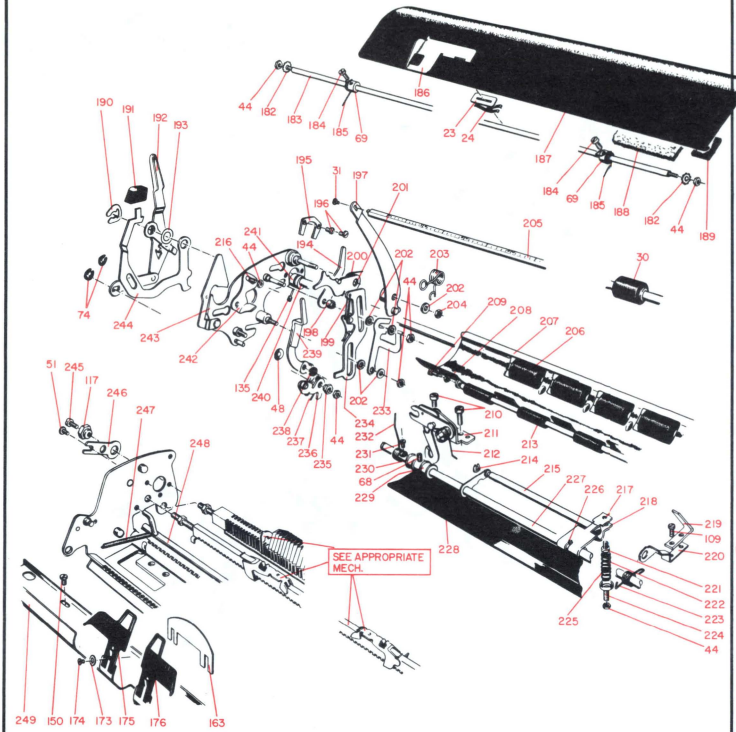
CARRIAGE & RAILS

(MODEL B1-B4)



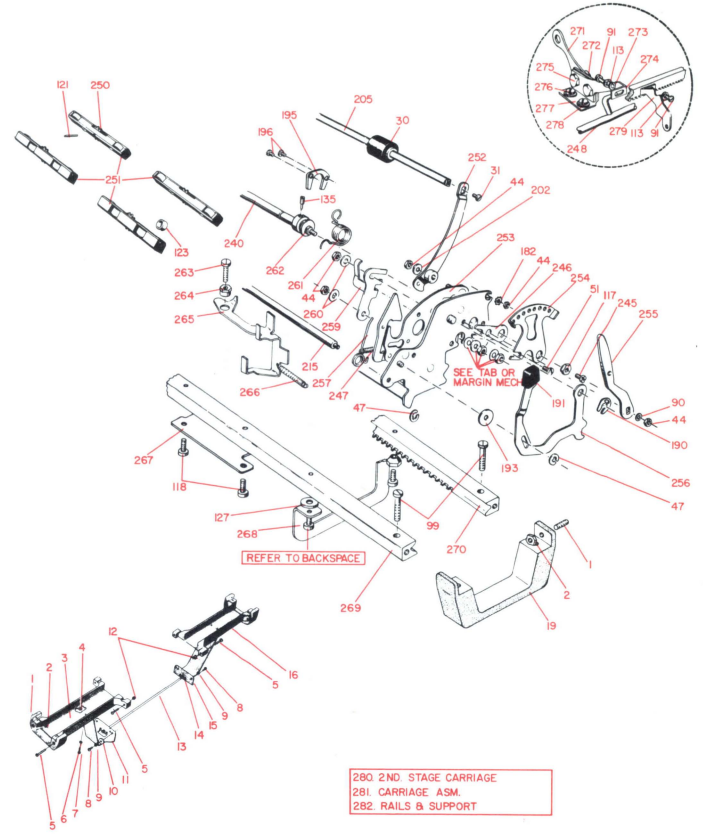
CARRIAGE & RAILS (MODEL A1-A4)

MECH. CODE
02



CARRIAGE & RAILS (MODEL A1-A4)

MECH. CODE
02

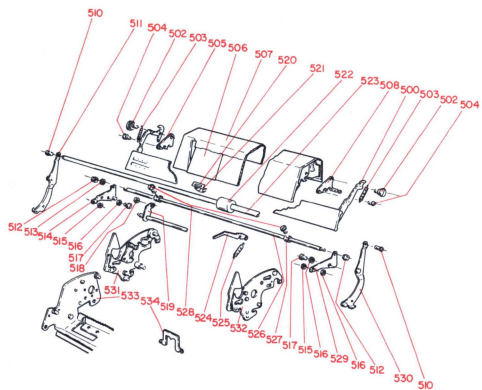


MECH. CODE

02

W.T. CARRIAGE & RAILS

(MODEL A1-A4)



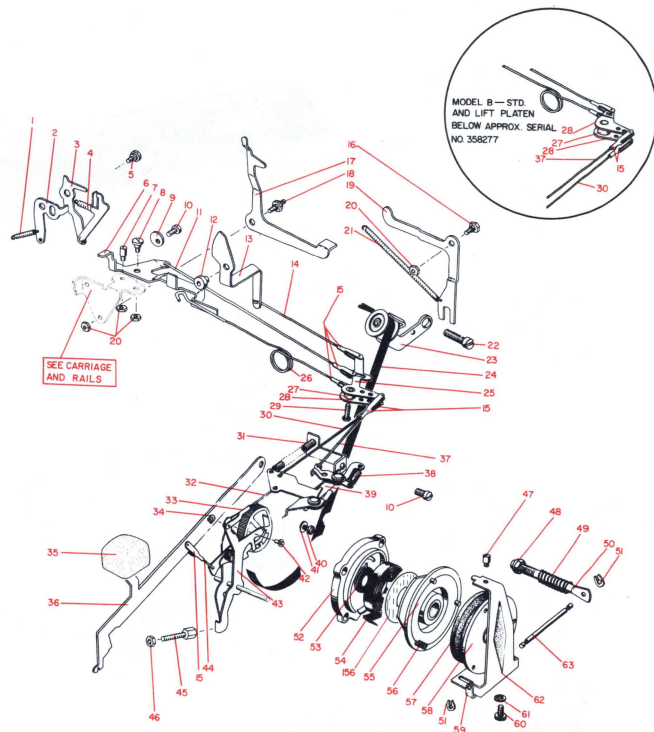
PARTS NOT SHOWN IN THIS FIGURE ARE TO BE FOUND UNDER MODEL A
CARRIAGE AND RAILS (02)

MECH. CODE

03

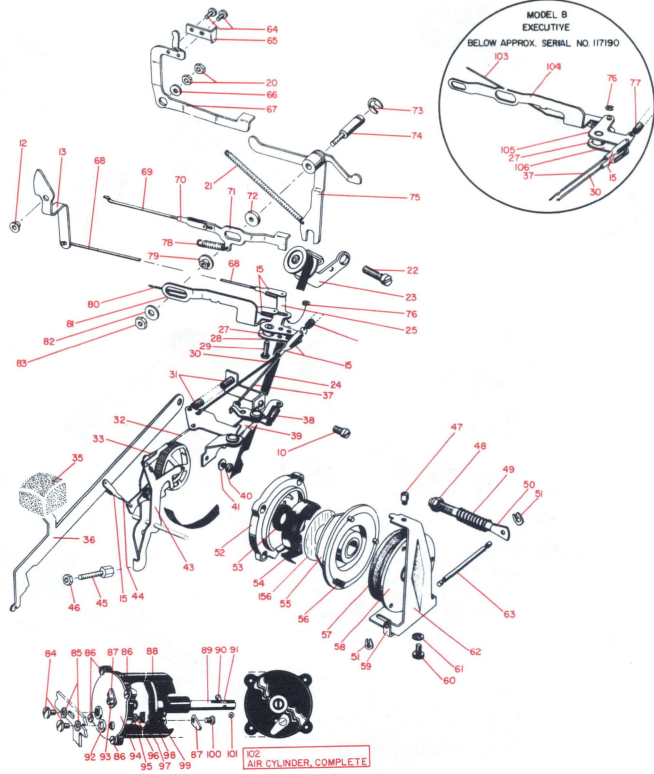
CARRIAGE RETURN

(MODEL B1)



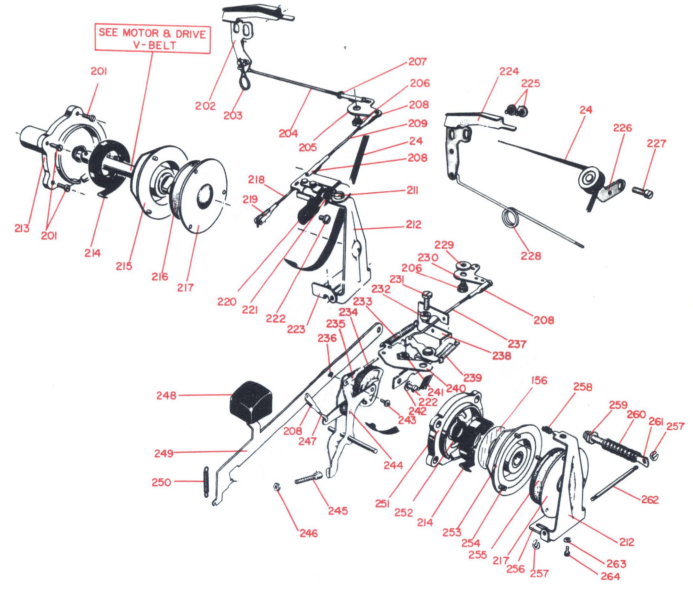
CARRIAGE RETURN (MODEL B4)

MECH. CODE
03



CARRIAGE RETURN (MODEL A1)

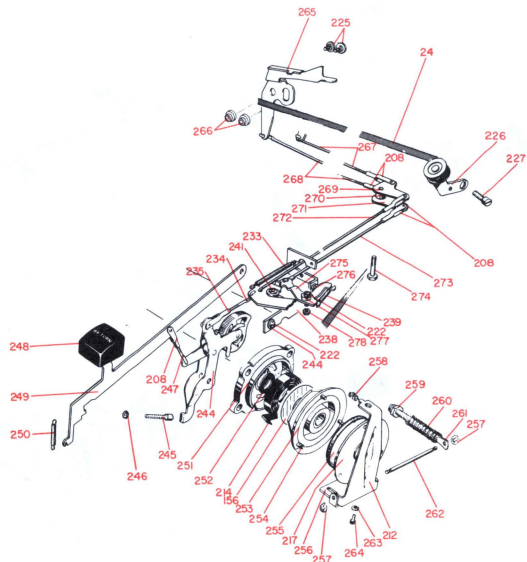
MECH. CODE
03



MECH. CODE

03

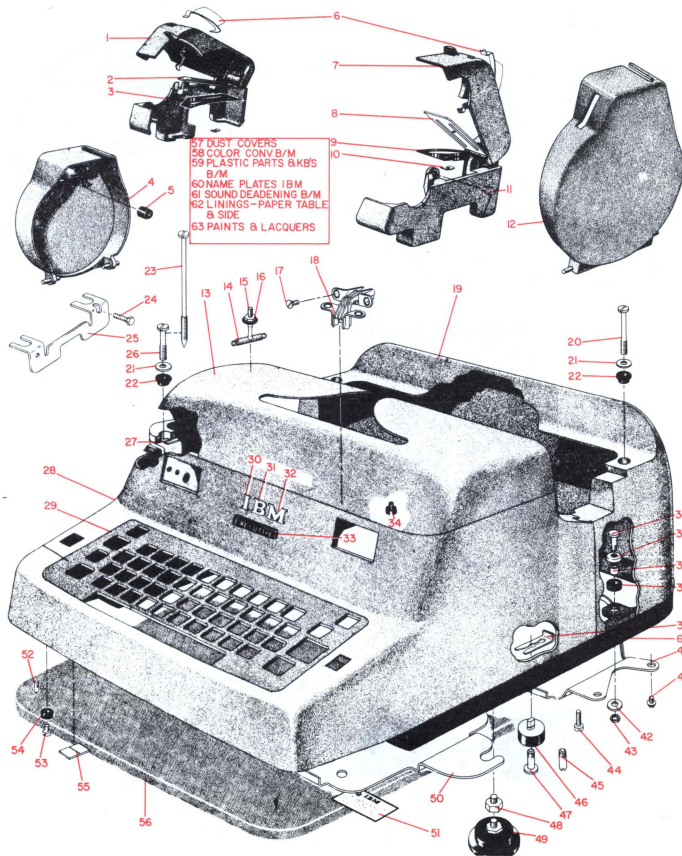
CARRIAGE RETURN (MODEL A4)



MECH. CODE

04

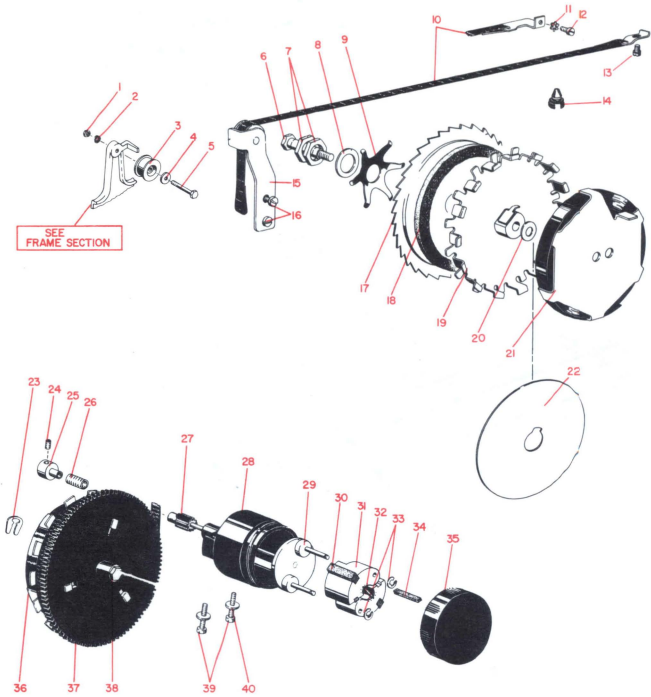
COVERS



GOVERNOR & CARRIAGE TENSION

(MODEL A1-A4, MODEL B1-B4)

MECH. CODE
05



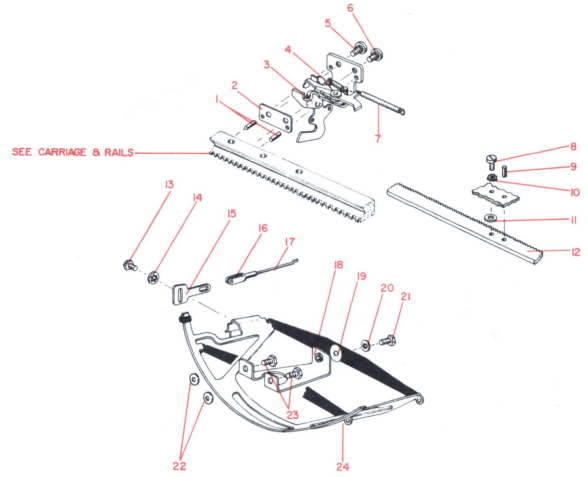
SEE
FRAME SECTION

41. CENTRIFUGAL GOV. ASM.
42. B/M GOV. & DRIVE

ESCAPEMENT

(MODEL A1, MODEL B1)

MECH. CODE
06

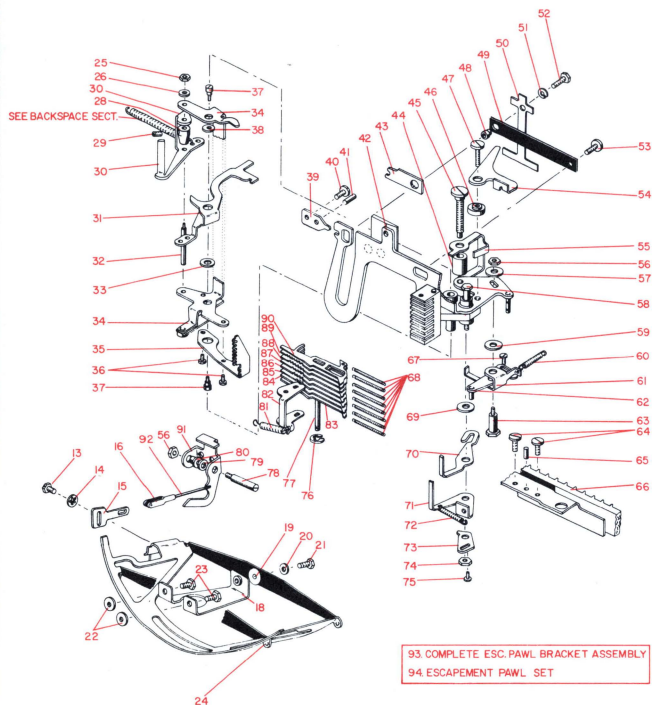


SEE CARRIAGE & RAILS

MECH. CODE

06

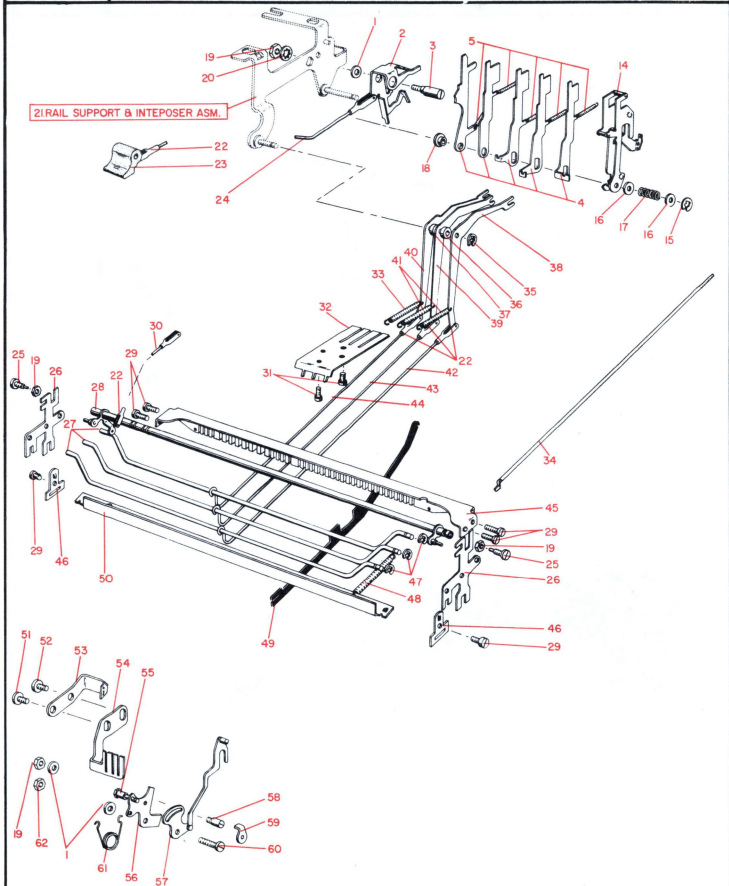
ESCAPEMENT (MODEL A4, MODEL B4)



MECH. CODE

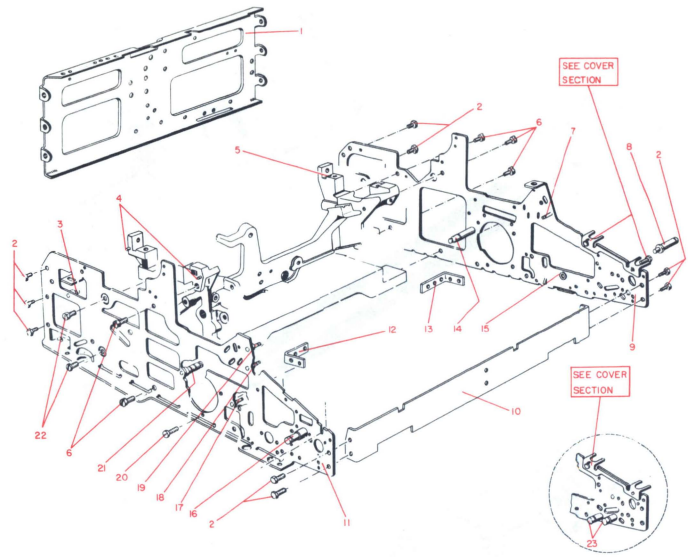
07

ESCAPEMENT CONTROL (MODEL A4, MODEL B4)



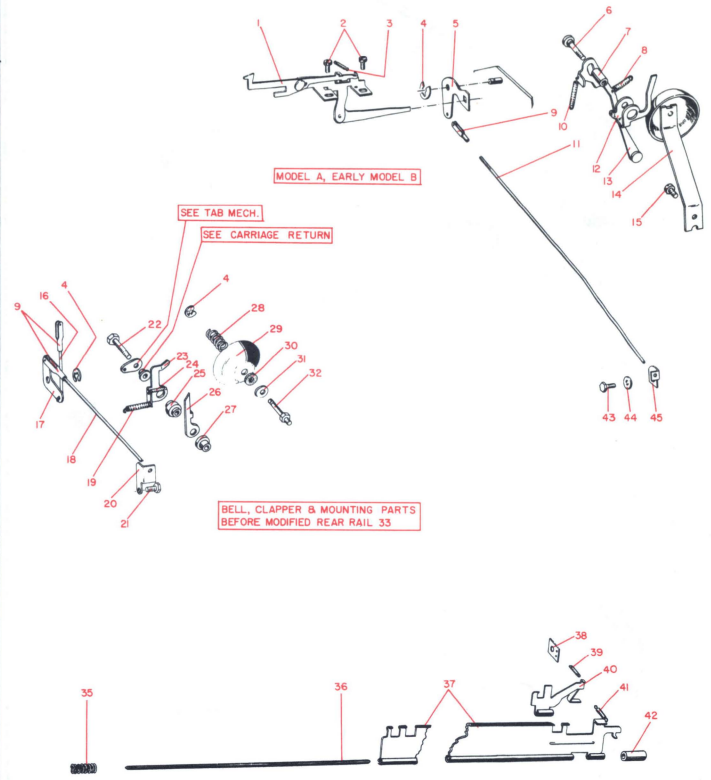
FRAMES

MECH. CODE
08



KEYBOARD LOCK & BELL

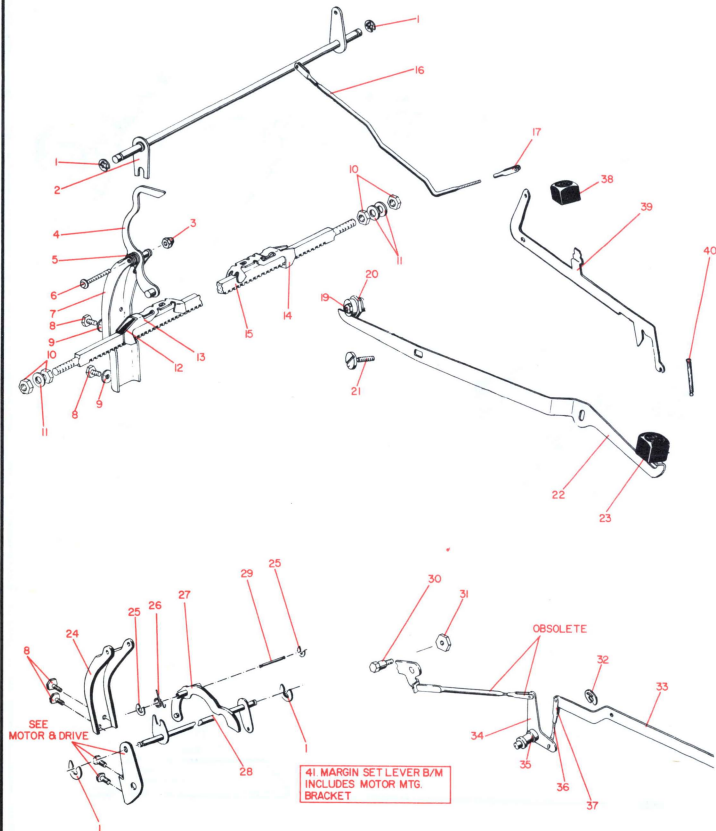
MECH. CODE
09



MECH. CODE

10

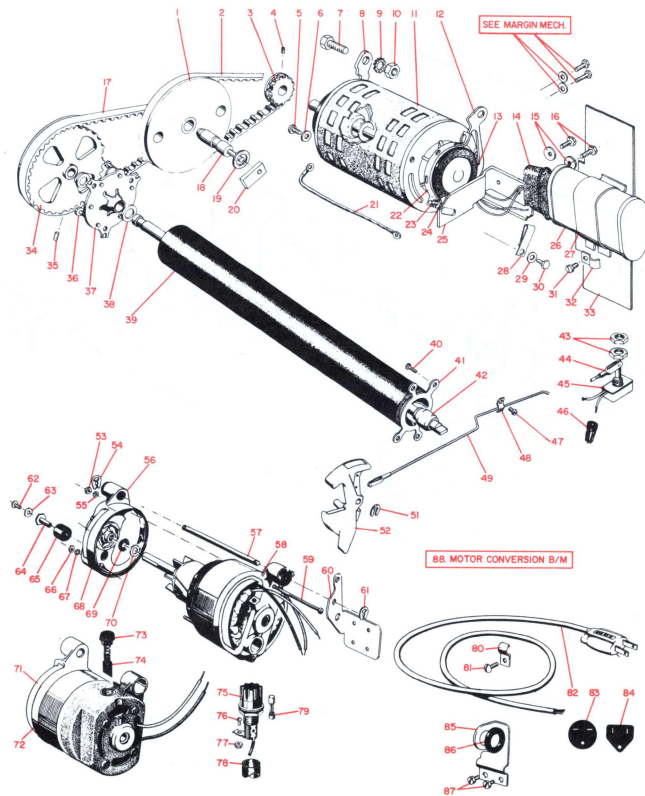
MARGIN



MECH. CODE

11

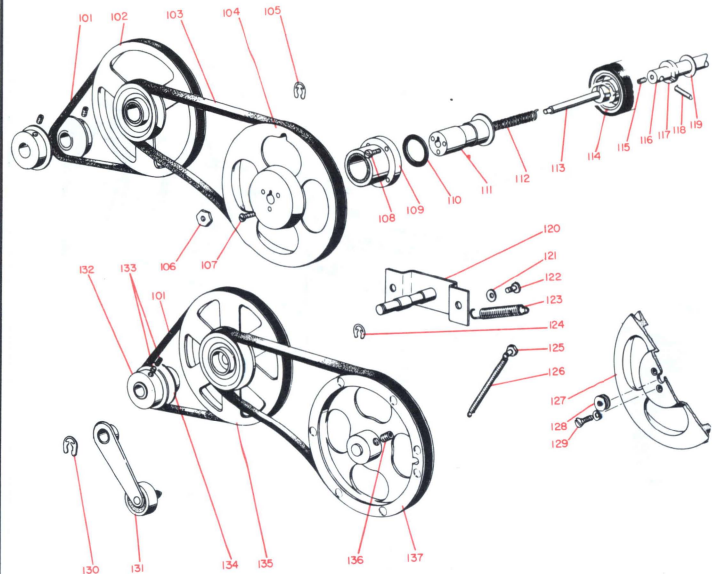
MOTOR & DRIVE



MOTOR & V-BELT DRIVE

MECH. CODE

11



138-POSITIVE DRIVE B/M

PLATENS

MECH. CODE

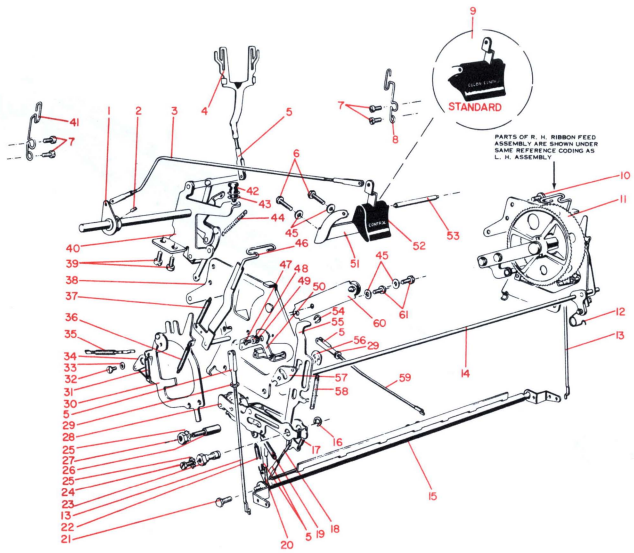
12



16 UNIVERSAL PLATEN ASM.

MECH. CODE
13

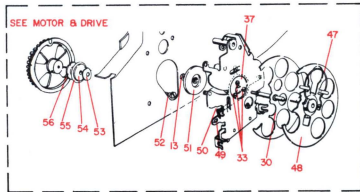
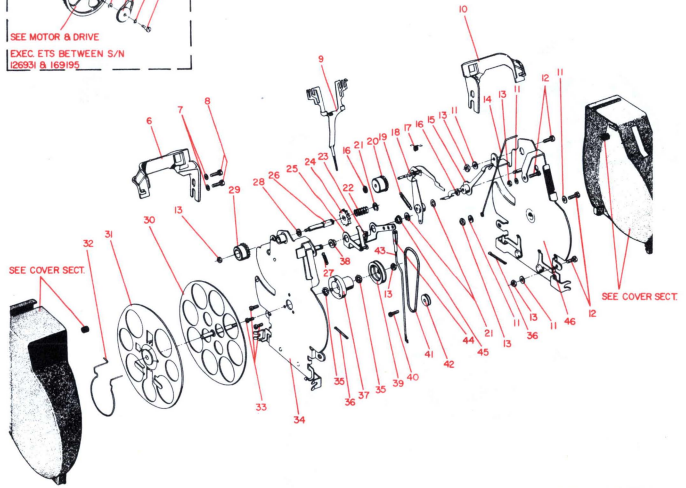
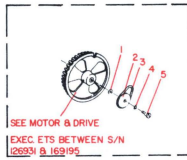
FABRIC RIBBON



62. FEED PLATE ASM - LH OR RH
63. FABRIC RIBBON B/M

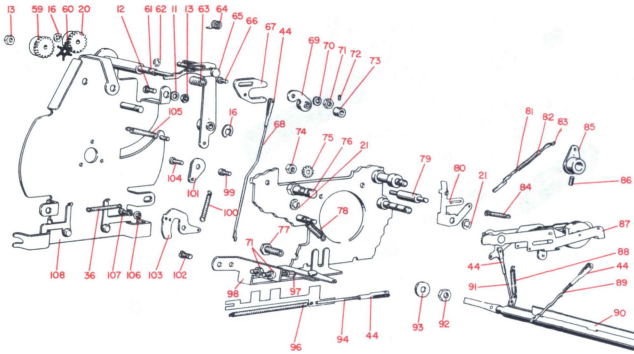
MECH. CODE
14

CARBON RIBBON



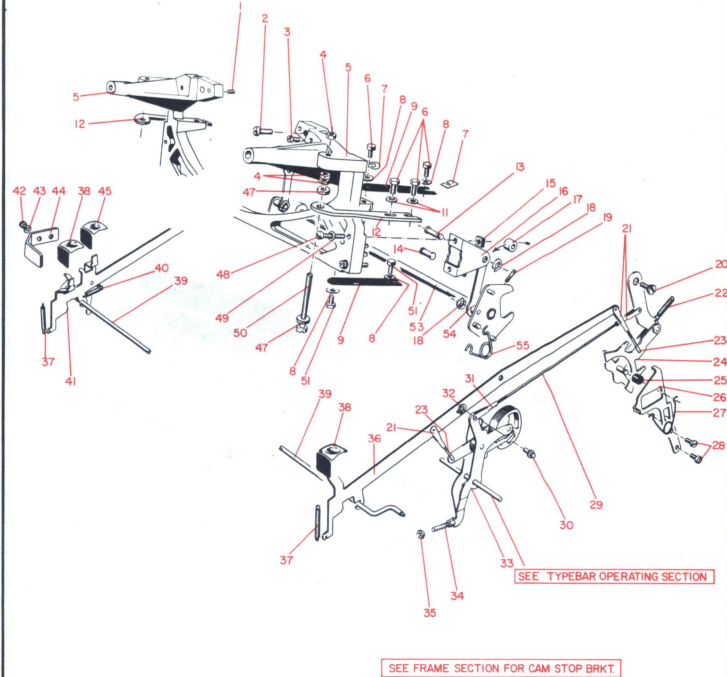
PROPORTIONAL FEED
(MODEL A4, MODEL B4)

MECH. CODE
14



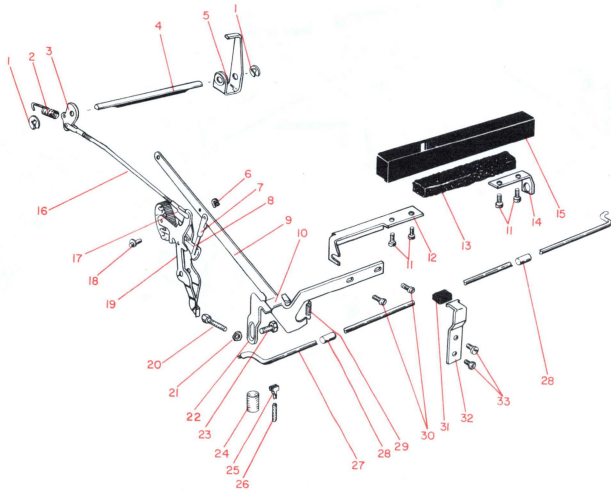
SHIFT

MECH. CODE
16



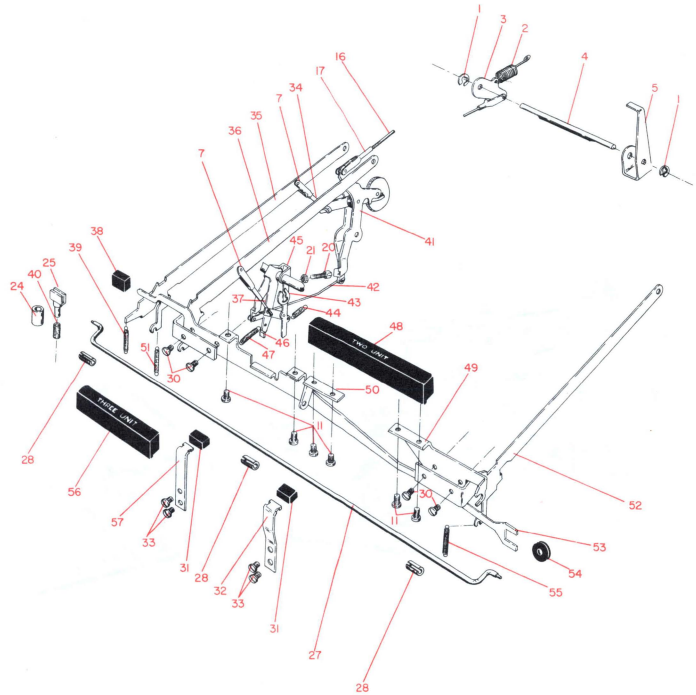
MECH. CODE
17

SPACEBAR (MODEL A1, MODEL B1)



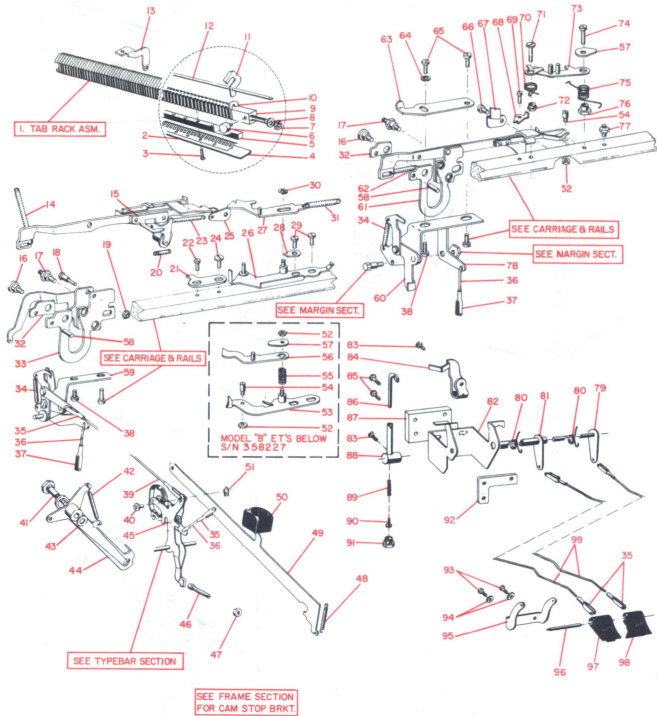
MECH. CODE
17

SPACEBAR (MODEL A4, MODEL B4)



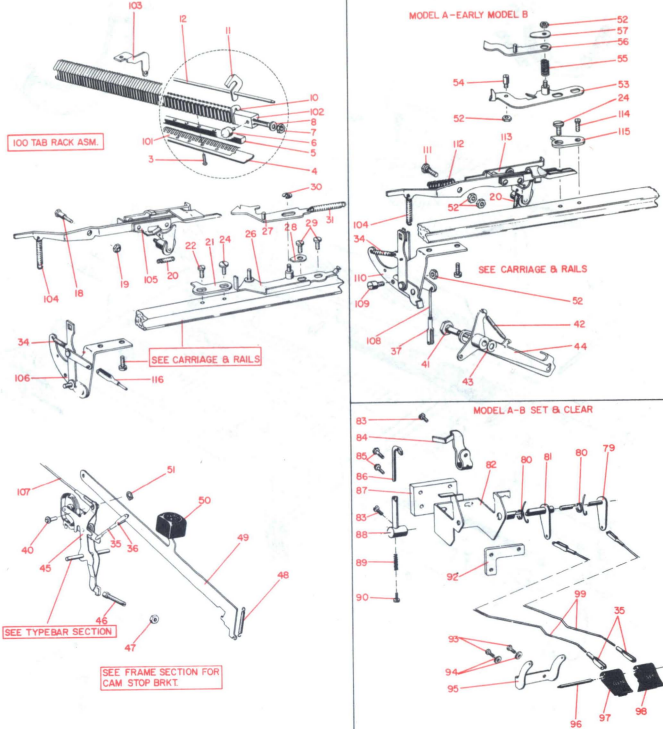
TABULATION
(MODEL A1, MODEL B1)

MECH. CODE
18



TABULATION

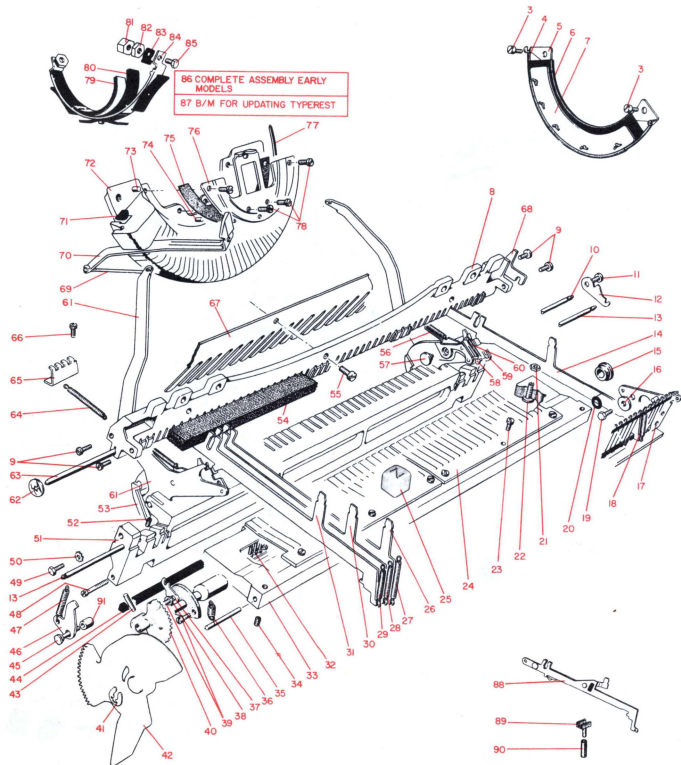
MECH. CODE
18



MECH. CODE

19

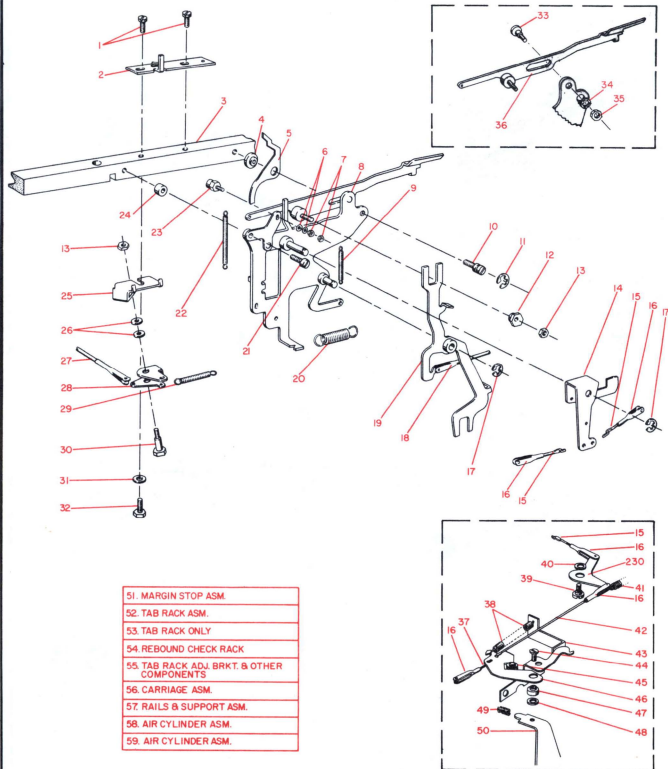
TYPEBAR OPERATING



MECH. CODE

30

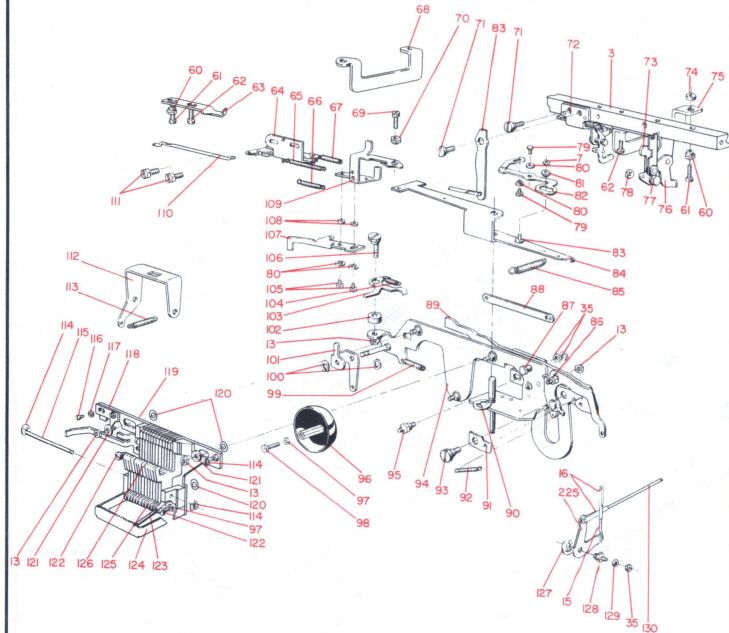
**DECIMAL TABULATION
(MODEL B1-B4)**



- 51. MARGIN STOP ASM.
- 52. TAB RACK ASM.
- 53. TAB RACK ONLY.
- 54. REBOUND CHECK RACK
- 55. TAB RACK ADJ. BRKT. & OTHER COMPONENTS
- 56. CARRIAGE ASM.
- 57. RAILS & SUPPORT ASM.
- 58. AIR CYLINDER ASM.
- 59. AIR CYLINDER ASM.

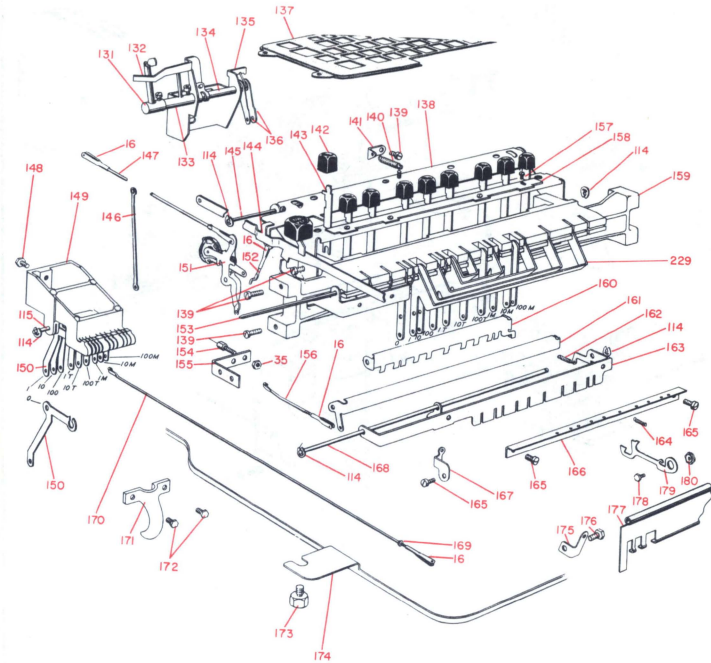
DECIMAL TABULATION (MODEL B1-B4)

MECH. CODE
30



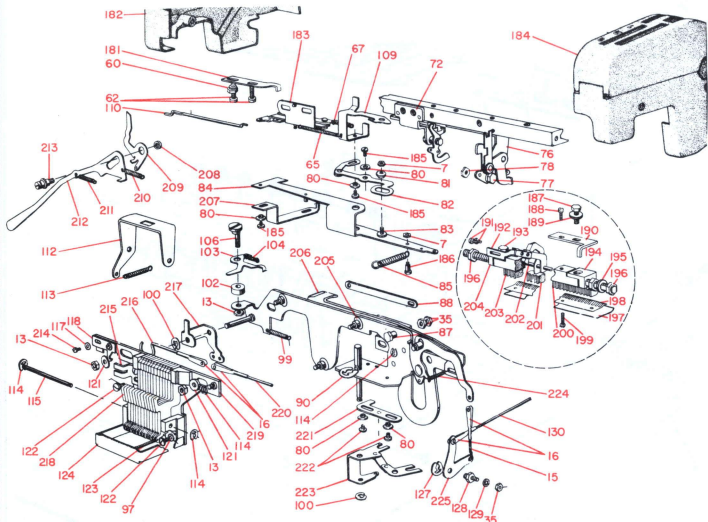
DECIMAL TABULATION

MECH. CODE
30



MECH. CODE
30

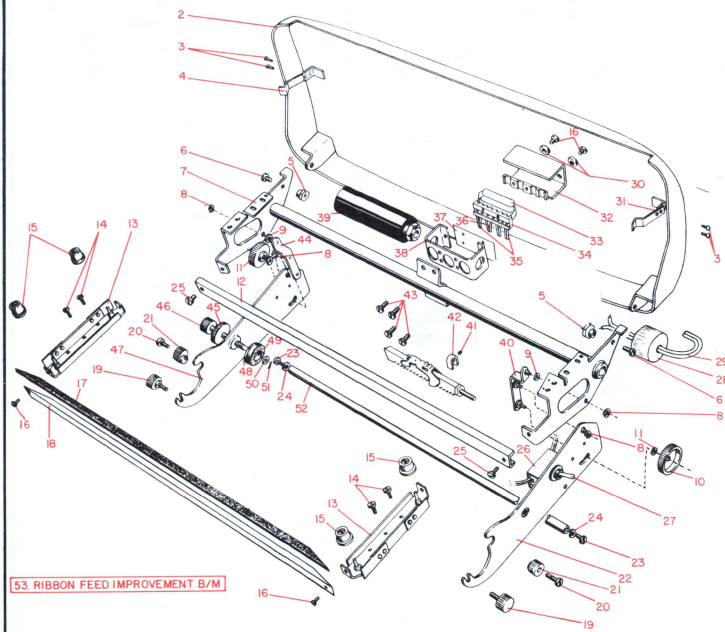
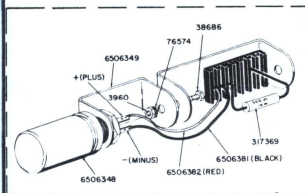
DECIMAL TABULATION (MODEL A1-A4)



226 - TAB RACK ASM.
 227 - RAIL & SUPPORT ASM.
 228 - CARRIAGE ASM.

MECH. CODE
31

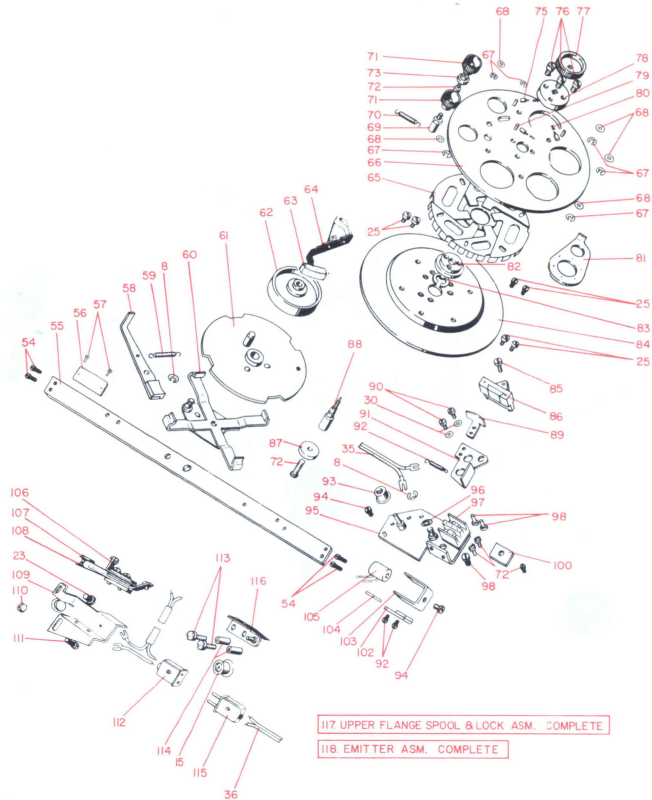
HEKTOWRITER (MODEL B)



53. RIBBON FEED IMPROVEMENT B/M

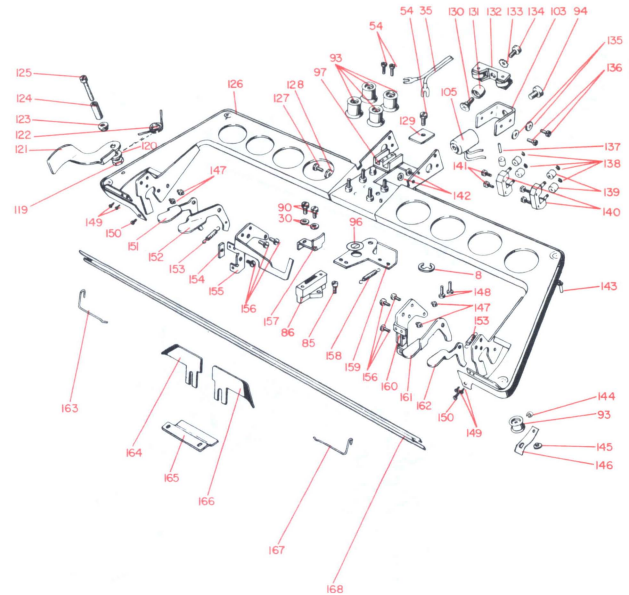
**HEKTOWRITER
(MODEL B)**

MECH. CODE
31



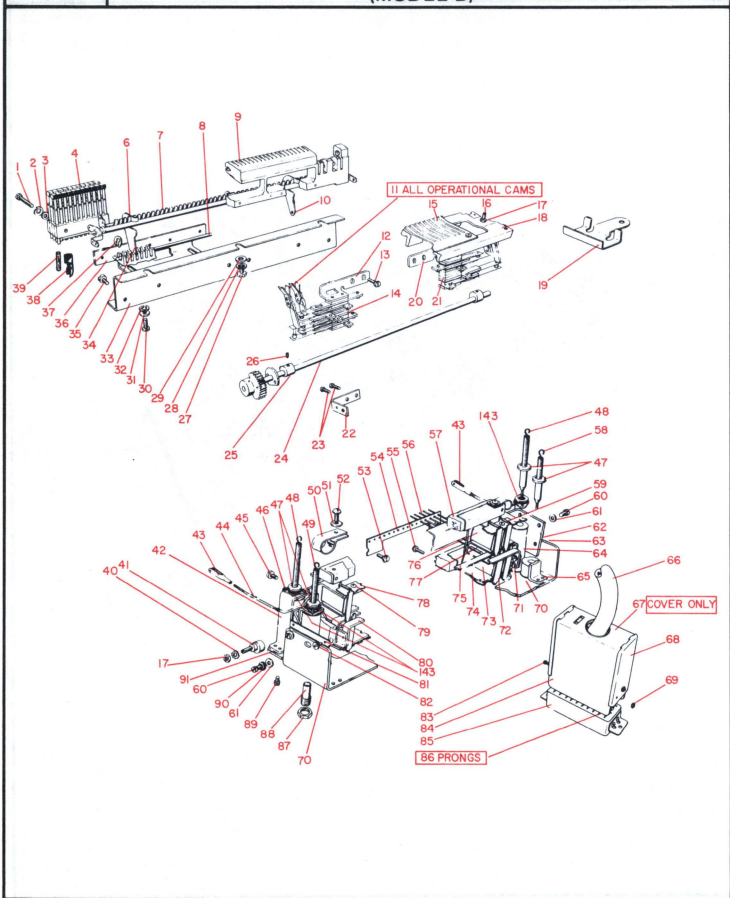
**HEKTOWRITER
(MODEL B)**

MECH. CODE
31



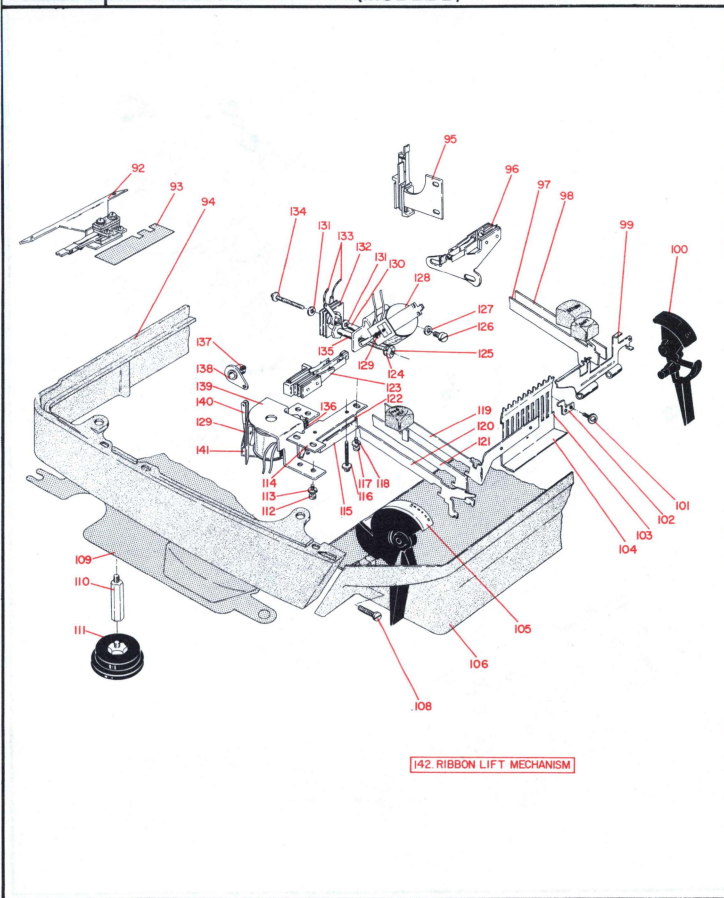
MECH. CODE
32

I/O WRITER (MODEL B)



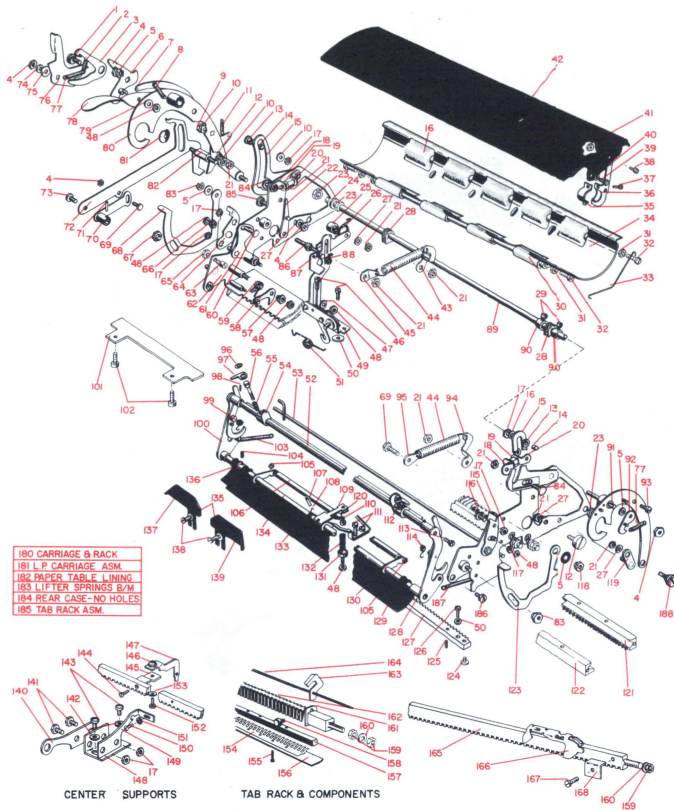
MECH. CODE
32

I/O WRITER (MODEL B)



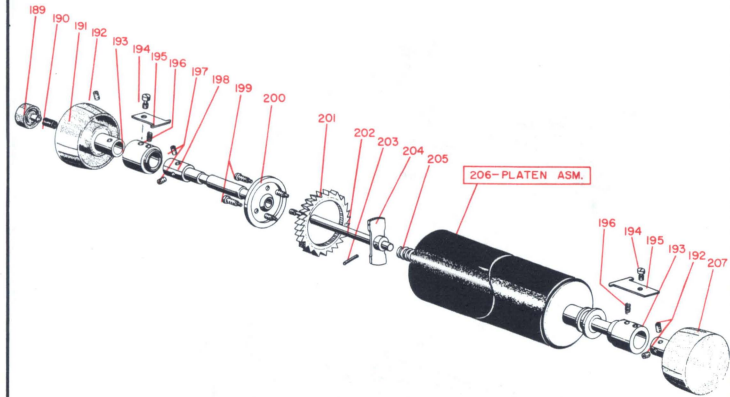
LP FORMSWRITER

MECH. CODE
33



LP FORMSWRITER

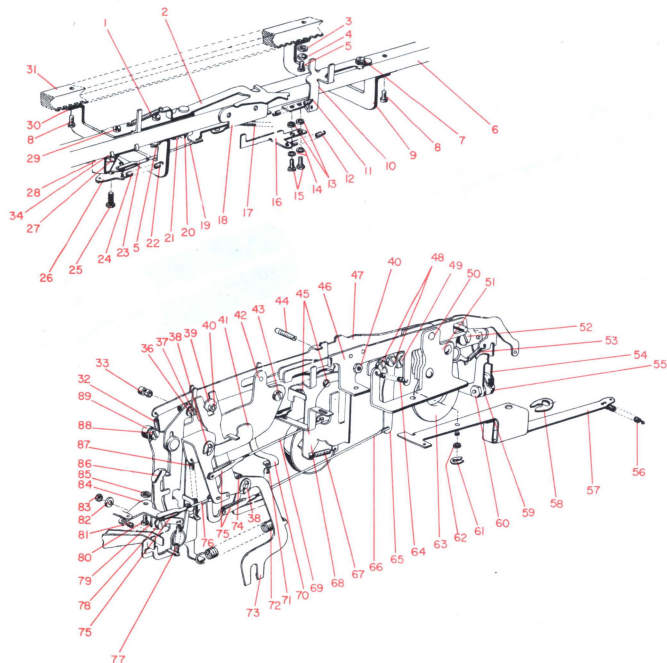
MECH. CODE
33



MECH. CODE

34

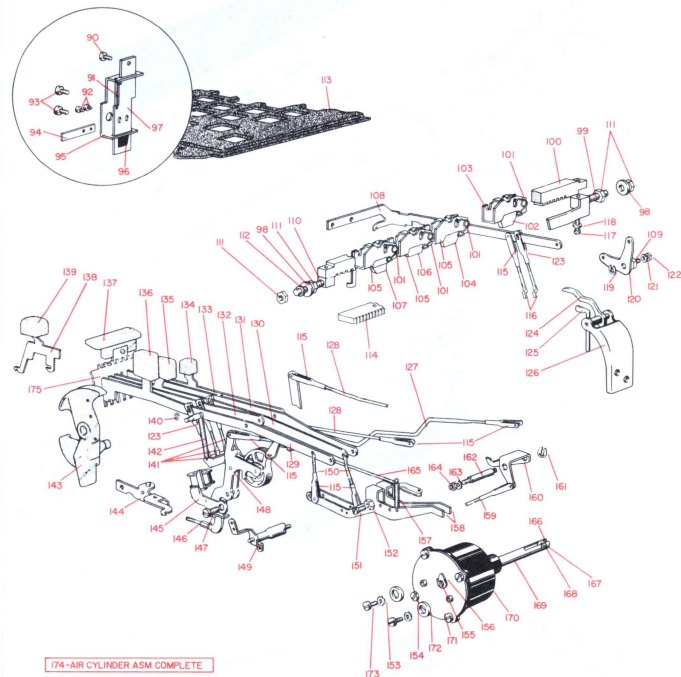
PARTIAL CARRIAGE RETURN



MECH. CODE

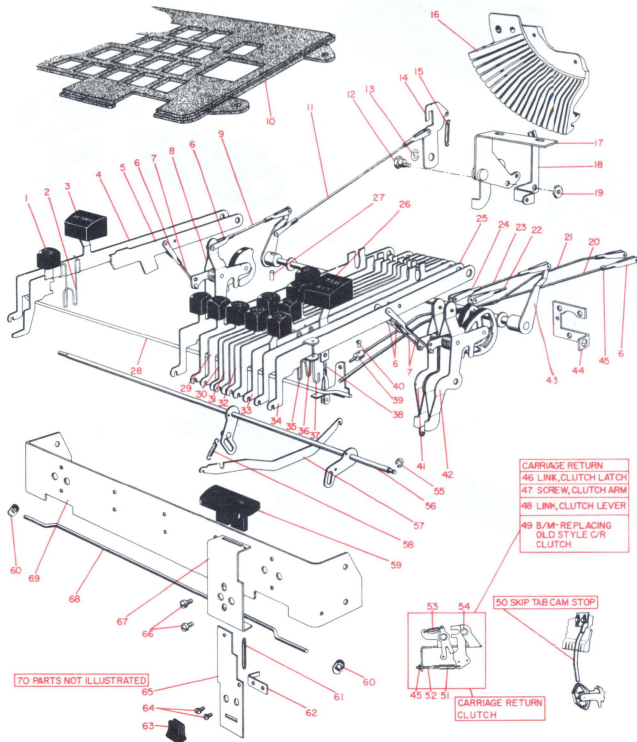
34

PARTIAL CARRIAGE RETURN



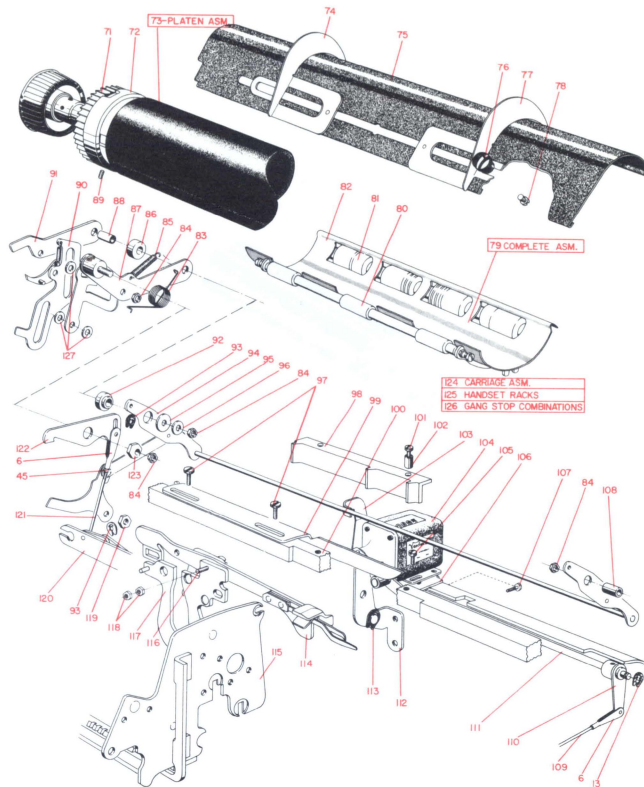
**TOLL BILLER
(MODEL A)**

MECH. CODE
35



**TOLL BILLER
(MODEL A)**

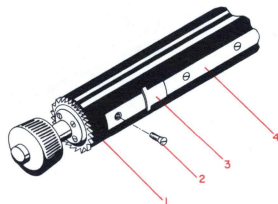
MECH. CODE
35



MECH. CODE

40

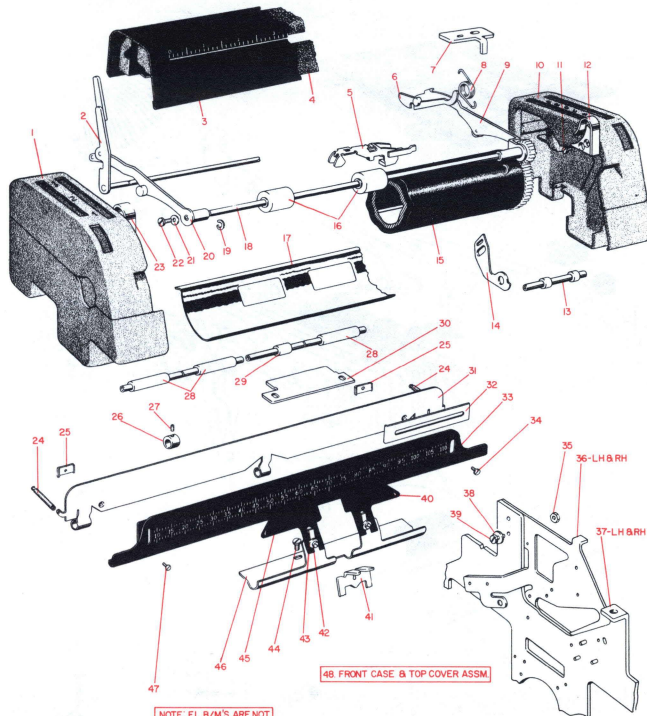
CARDHOLDING PLATEN



MECH. CODE

41

CHECKWRITER (MODEL B)



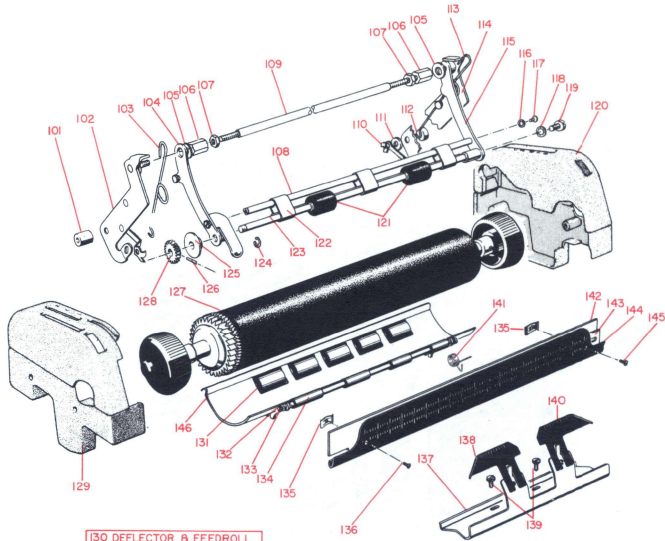
48 FRONT CASE & TOP COVER ASSM

NOTE: FL B/M'S ARE NOT AVAILABLE

CHECKWRITER (MODEL A)

MECH. CODE

41

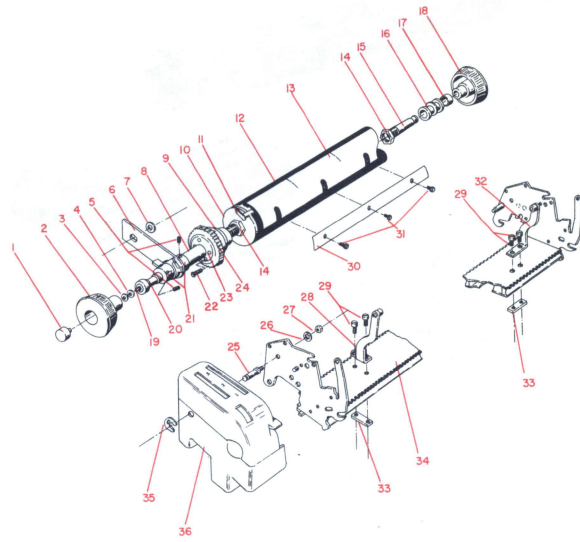


130 DEFLECTOR & FEEDROLL
ASM.

CLAMPTYPE WAYBILL PLATEN

MECH. CODE

42

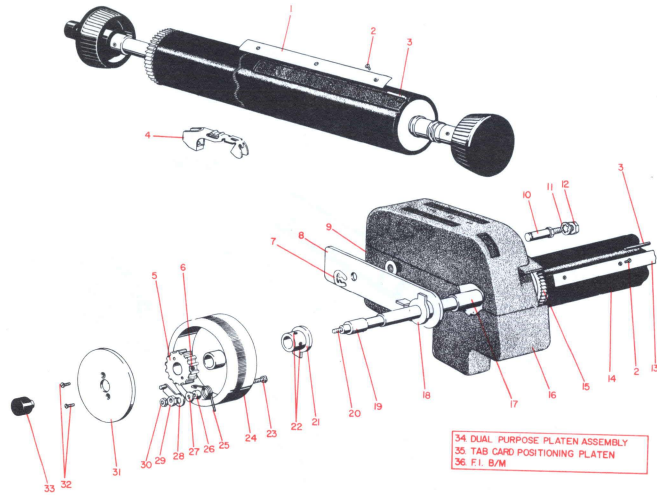


37CLAMP TYPE WAYBILL PLATEN ASM.
38 F1 BILLS OF MATERIAL

MECH. CODE

43

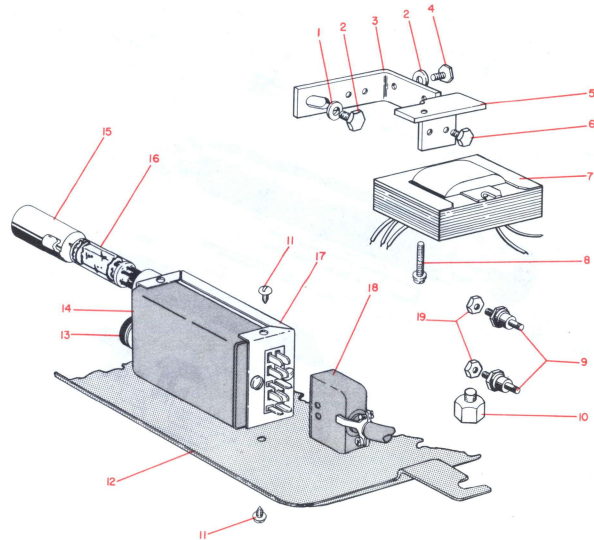
DUAL PURPOSE PLATEN



MECH. CODE

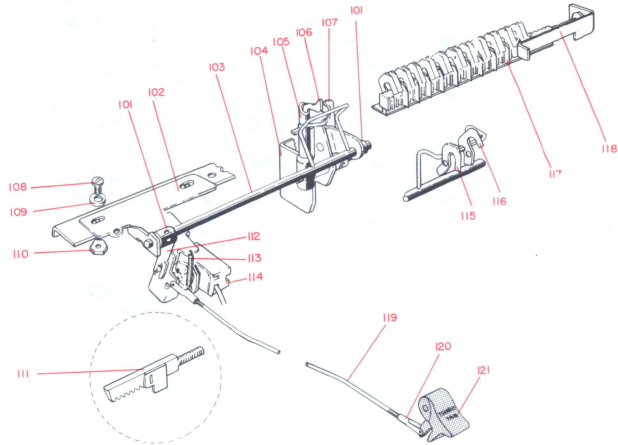
44

ELECTRONIC TAB (MODEL B)



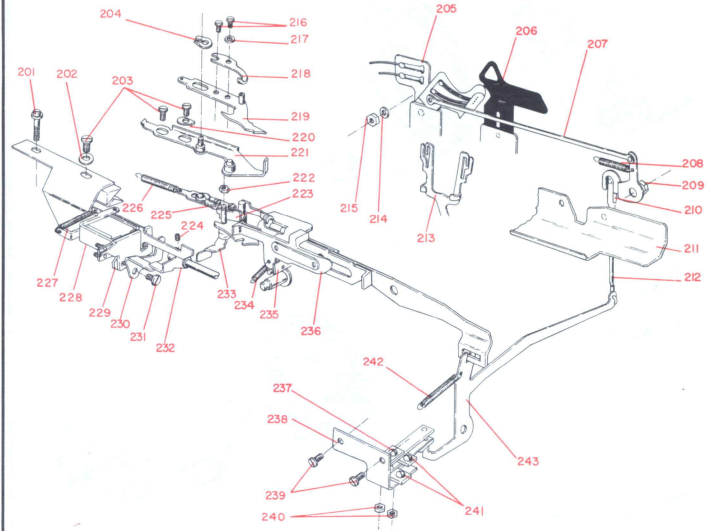
**ELECTRONIC TAB
(MODEL B)**

MECH. CODE
44



**ELECTRONIC TAB
(MODEL B)**

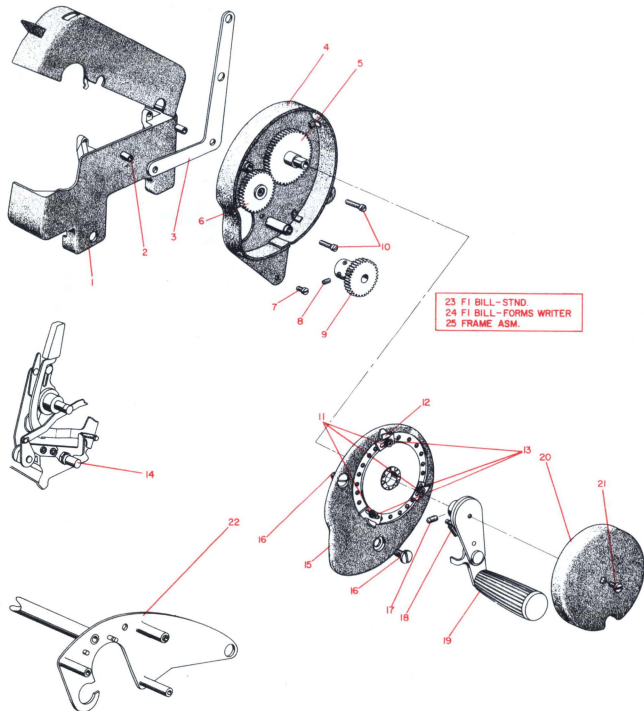
MECH. CODE
44



MECH. CODE

45

FORMSLINE SELECTOR

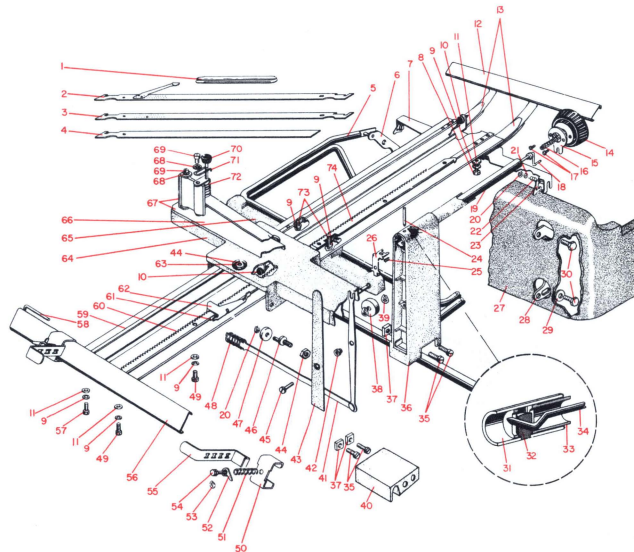


23 F1 BILL-STND
 24 F1 BILL-FORMS WRITER
 25 FRAME ASM.

MECH. CODE

46

FORMSCARRIER

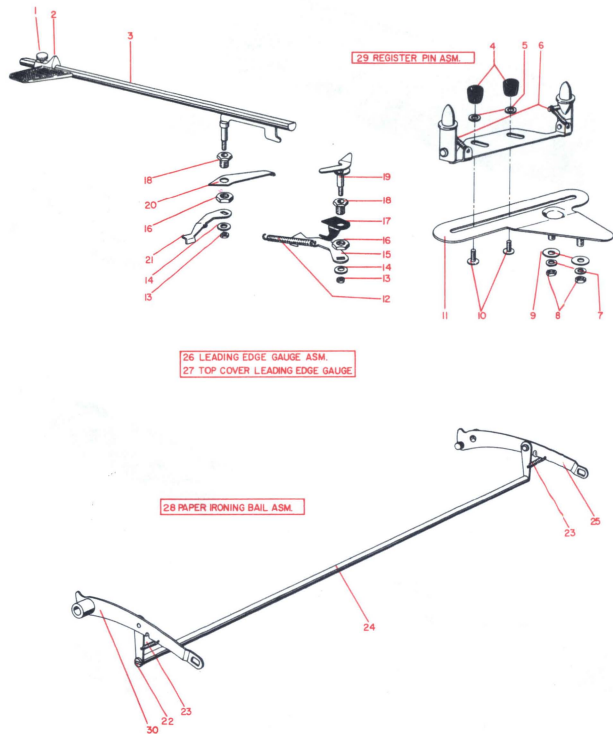


NOTE: PAINTED PARTS FOR FORMS CARRIER AVAILABLE IN GRAY ONLY. SPECIFY MODEL A OR B ON ORDER.
 OTHER COLORS AVAILABLE ON S.E.R.

73 DUST COVER FOR FORMS CARRIER
 76 FORMS CARRIER ATTACHMENT

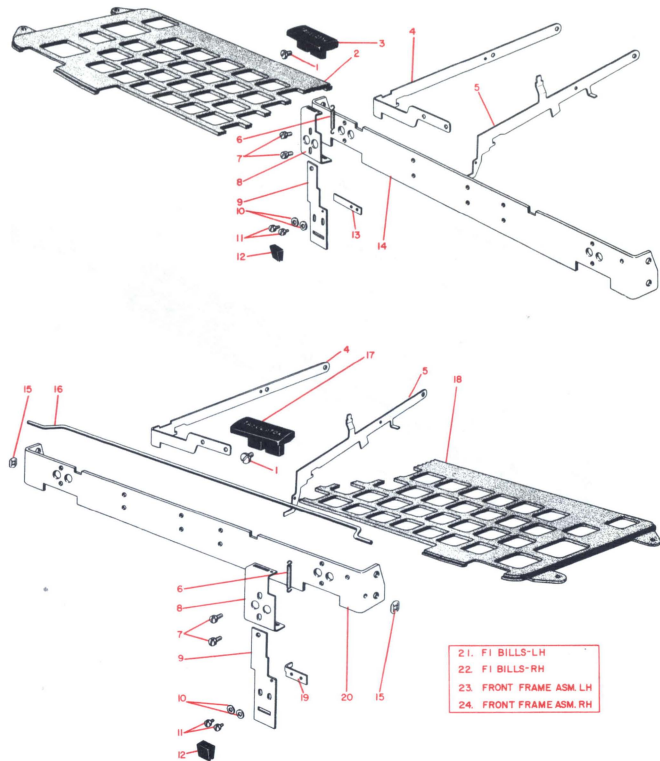
LEADING EDGE GAUGE

MECH. CODE
47



PALM TAB

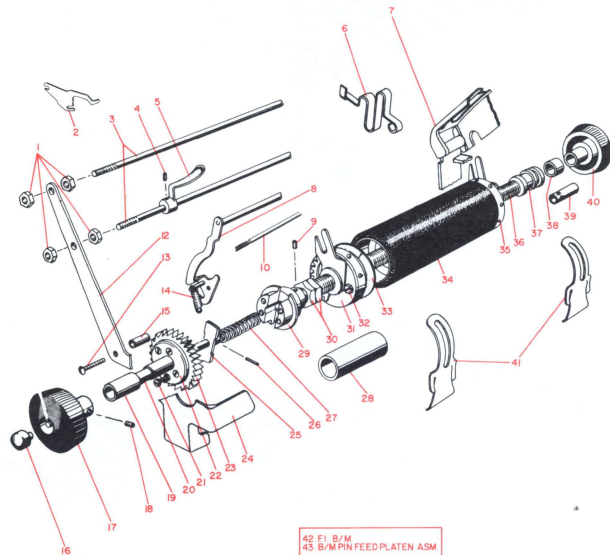
MECH. CODE
48



MECH. CODE

49

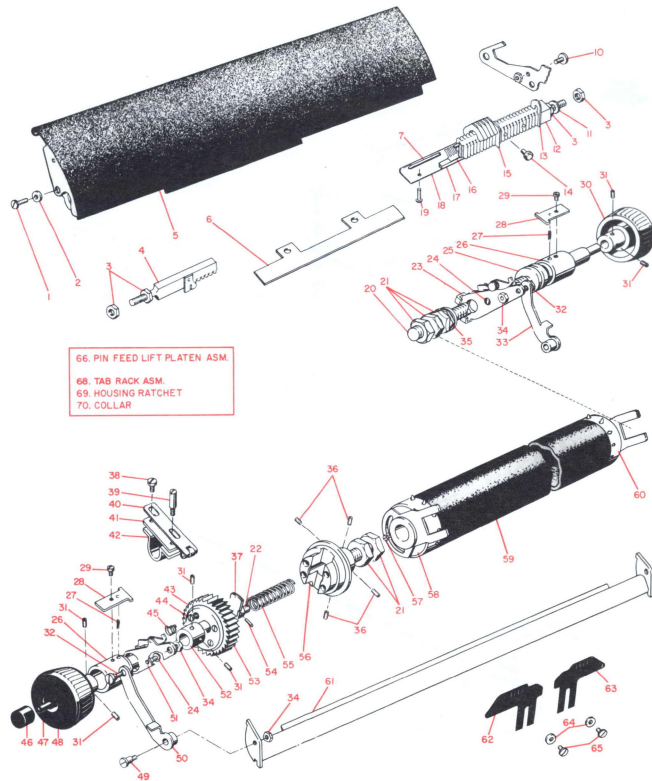
PIN FEED PLATEN



MECH. CODE

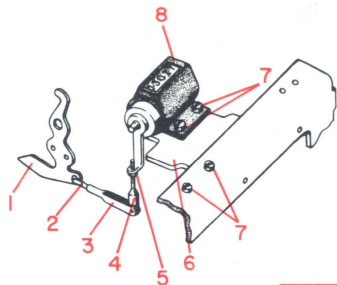
50

PIN FEED LIFT PLATEN



STROKE COUNTER

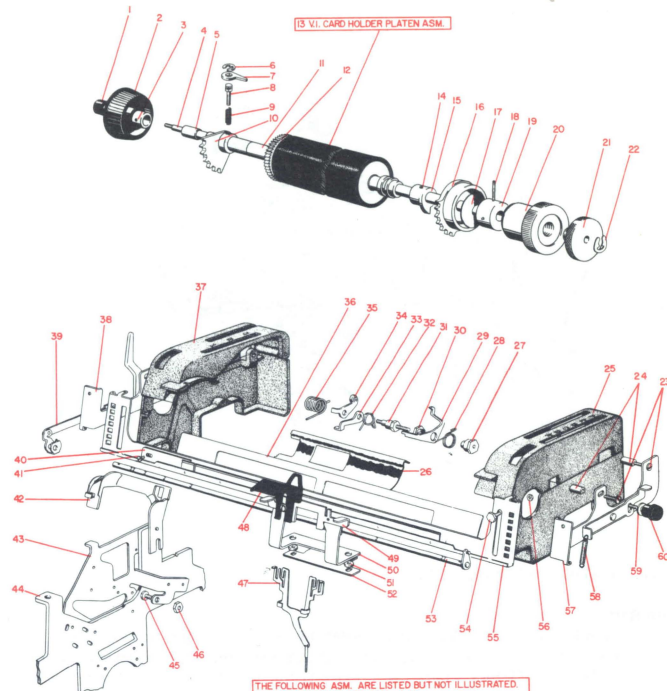
MECH. CODE
51



9 FI BILLS

VISIBLE INDEX PLATEN

MECH. CODE
52

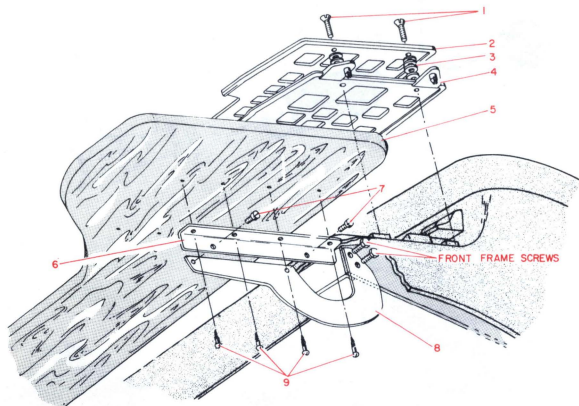


THE FOLLOWING ASM. ARE LISTED BUT NOT ILLUSTRATED.
61 PLATEN GUIDE PLATE ASM.-L.H.
62 FRONT CASE & TOP COVER ASM.

MECH. CODE

60

HANDICAPPED ATTACHMENT



INSTALLATION INSTRUCTIONS

Arm Rest

1. Fasten Keyboard Rest Board to Arm Rest Brackets with eight wood screws.
2. Remove Front Typewriter Cover and attach angle mounting brackets outside Left & Right ET Side Frames with existing frame screws. Replace Front Cover.
3. Fasten Keyboard Rest Board to angle mounting brackets.

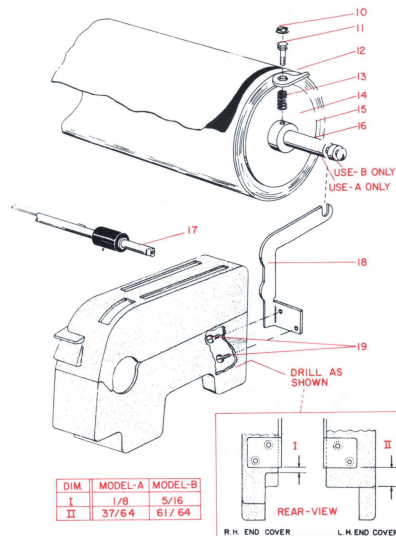
Keyboard Rest

1. Remove and discard existing Keyplate and replace with Lower Keyplate, Ref. 4.
2. Insert Spacing Washers, Ref. 3, as required to elevate Upper Keyplate to desired position.
3. Secure Upper Keyplate, Ref. 2, with four screws.

MECH. CODE

60

HANDICAPPED ATTACHMENT



INSTALLATION INSTRUCTIONS

Paper Holder

1. Remove Left & Right Carriage End Covers. Drill 3/16" (4,76mm) holes as indicated.
2. Secure Left & Right Shaft Support with screws provided.
3. Assemble and install Paper Roll, Flanges & Adjustable Flange Lock Screws.
4. Replace Paper Bail Shaft with Tear-Off Blade.

PLATEN INDEXING CHART

The platen indexing chart was designed using part numbers for all machines that use standard indexing parts. It can be used for finding the number of lines in 10 inches of form. To determine the number of lines in 1" of form, move decimal point one place to left. To read the chart, follow horizontal lines to right-hand margin. All parts in a specific line that are designated C in the chart heading are used as an assembly to give specified lines per inch on a Model C. The same applies to parts under headings marked A or B. Allowance for the thickness of forms must be made when selecting the ratchet. This chart applies to forms with ".030"

thickness or less. Each additional .030" thickness requires more teeth in the ratchet. By using the table listed below, additional thickness can be compensated

- 29T to 34T – 1 additional tooth
- 35T to 57T – 2 additional teeth
- 58T to 66T – 3 additional teeth

PLATEN RATCHET P/N's					DETENT LEVER POSITIONS					DETENT P/N's			DETENT SPRINGS			INDEX PAWLS			UPPER INDEX ** PAWL STOP		LINE SPACE LEVERS			Stamp No	
No of Teeth	Model A	Model B Universal	Model C Old Style	Lot C Model D	1 pos	Teeth Index	2 pos	Teeth Index	3 pos	Teeth Index	Mod A	Mod B	Mod C & D Roller	Mod A	Mod B	Mod C Mod D	Mod A	Mod B	Mod C Mod D	Mod A	Mod B	Mod C	Mod. D Std.		Mod. D Exec.
24	1002224	-----	-----	-----	43.7	1	21.8	2	14.5	3	1072875	-----	-----	1072479	-----	-----	1073401	-----	-----	1076865	-----	-----	-----	-----	-
25	-----	-----	-----	-----	45.5	1	22.7	2	15.2	3	-----	-----	-----	-----	-----	-----	-----	-----	-----	-----	-----	-----	-----	-----	-
26	-----	-----	-----	-----	47.3	1	23.7	2	15.8	3	-----	-----	-----	-----	-----	-----	-----	-----	-----	-----	-----	-----	-----	-----	-
27	1002227	-----	-----	-----	49.1	1	24.6	2	16.4	3	1072875	-----	-----	1072479	-----	-----	1073401	-----	-----	1076865	-----	-----	-----	-----	-
28	-----	1261928	-----	-----	50.9	1	25.5	2	17.0	3	-----	1103670	-----	-----	1108928	-----	-----	1103599	-----	1103612	-----	-----	-----	-----	-
29	1002229	1107229	1117129	1155129	52.8	1	26.4	2	17.6	3	1076864	1103670	1115657	1072479	1108928	1117928	1073401	1103599	1103599	1000325	1103613	1115681	1171652	11/1669	1
30	1002230	1108330	-----	-----	54.6	1	27.3	2	18.2	3	1076880	1103670	-----	1072479	1108928	-----	1073401	1103599	-----	1076865	1103613	-----	-----	-----	-
31	1002231	1110231	-----	-----	56.4	1	28.2	2	18.8	3	1076880	1103670	-----	1072479	1108928	-----	1073401	1103599	-----	1000325	1103613	-----	-----	-----	-
32	1002232	1109832	1117132	1155132	58.2	1	29.1	2	19.4	3	1072875	1103670	1115657	1072479	1108928	1117928	1073401	1103599	1103599	1000325	1103614	1115682	1171653	1171670	2
33	1002233	1107233	1117133	1155133	60.0	1	30.0	2	20.0	3	1076864	1103670	1115657	1072479	1108928	1117928	1073401	1103599	1103599	1000325	1103614	1115682	1171653	1171670	2
34	1002234	1104034	1117134	1155134	61.8	1	30.9	2	20.6	3	1076862	1103670	1115657	1072479	1108928	1117928	1073401	1103599	1103599	1000325	1103614	1115682	1171653	1171670	2
35	1002235	1104035	1117135	1155135	63.7	1	31.8	2	21.2	3	1072875	1103670	1115657	1072479	1108928	1117928	1073401	1103599	1103599	1000325	1103614	1115683	1171654	1171671	3
36	1002236	1104036	1117136	1155136	65.5	1	32.7	2	21.8	3	1076880	1103670	1115657	1072479	1108928	1117928	1073401	1103599	1103599	1000325	1103615	1115683	1171654	1171671	3
37	-----	1110237	1117137	1155137	67.3	1	33.7	2	22.4	3	-----	1103670	1115657	-----	1108928	1117928	-----	1103599	1103599	-----	1103615	1115683	-----	-----	3
38	1002238	1104038	1117138	1155138	69.1	1	34.6	2	23.0	3	1076864	1103670	1115657	1072479	1108928	1117928	1073401	1103599	1103599	1000325	1103615	1115684	1171655	1171672	4
39	1002239	1104039	1117139	1155139	70.9	1	35.5	2	23.7	3	1076880	1103670	1115657	1072479	1108928	1117928	1073401	1103599	1103599	1000325	1103615	1115684	1171655	1171672	4
40	1002240	1104040	1117140	1155140	72.8	1	36.4	2	24.3	3	1076880	1103670	1115657	1072479	1108928	1117928	1073401	1103599	1103599	1000325	1103615	1115684	1171655	1171672	4
41	1002241	1104041	1117141	1155140	73.7	2	24.9	3	18.6	4	1076882	1103670	1115657	1072479	1108928	1117928	1073401	1103599	1103599	1000325	1103603	1115685	1171656	1171673	5
42	-----	1104042	-----	-----	38.2	2	25.5	3	19.1	4	-----	1103670	-----	-----	1108928	-----	-----	1103599	-----	-----	1103603	-----	-----	-----	-
43	1002243	1110243	-----	-----	39.1	2	26.1	3	19.5	4	1072875	1103670	-----	1072479	1108928	-----	1073401	1103599	-----	1000325	1103603	-----	-----	-----	-
44	1002244	1104044	1117144	1155144	40.0	2	26.6	3	20.0	4	1076864	1103670	1115657	1072479	1108928	1117928	1073401	1103599	1103599	1000325	1103604	1115686	1171657	1171674	6
44	1002244	1104044	1117144	1155144	80.0	1	40.0	2	26.6	3	1076864	1103670	1115657	1072479	1108928	1117928	1073401	1103599	1103599	1002272	1103603	1115683	1171654	1171671	3
45	1002245	1104045	1117145	1155145	81.8	1	40.9	2	20.5	4	1076880	1103670	1115657	1072479	1108928	1117928	1073401	1103599	1103599	1076866	1103601	1115687	1171658	1171675	7
46	1002246	1104046	1117146	1155146	83.7	1	41.8	2	20.9	4	1072880	1103670	1115657	1072479	1108928	1117928	1073401	1103599	1103599	1076866	1103601	1115687	1171658	1171675	7
47	-----	1110247	1117147	1155147	85.5	1	42.8	2	21.4	4	-----	1103670	1115657	-----	1108928	1117928	-----	1103599	1103599	-----	1103601	1115687	-----	-----	7
48	1002248	1104048	1117148	1155148	43.7	2	29.1	3	17.5	5	1072875	1103670	1115657	1072479	1108928	1117928	1073401	1103599	1103599	1076866	1103602	1115688	1171659	1171676	8
48	-----	1104048	-----	1155148	43.7	2	21.8	4	14.6	6	-----	1103670	-----	-----	1108928	-----	-----	1103599	-----	-----	1103610	-----	-----	-----	-
49	1002249	1104049	1117149	1155149	44.6	2	29.7	3	17.8	5	1076864	1103670	1115657	1072479	1108928	1117928	1073401	1103599	1103599	1000325	1103602	1115688	1171659	1171676	8
50	1002250	1104050	1117150	1155150	45.5	2	30.3	3	22.7	4	1076884	1103634	1000363	1072479	1103637	1115646	1076862	1107452	1107452	1002272	1103605	1115689	1171660	1171677	9
50	-----	1104050	-----	1155150	45.5	2	22.7	4	15.2	6	-----	1103634	-----	-----	1103637	-----	-----	1107452	-----	-----	1103610	-----	-----	-----	-
51	1002251	1104051	1117151	1155151	46.4	2	30.9	3	23.2	4	1076884	1103634	1000363	1072479	1103637	1115646	1076862	1107452	1107452	1002272	1103605	1115689	1171660	1171677	9
52	1002252	1104052	1117152	1155152	47.3	2	31.5	3	23.7	4	1076884	1103634	1000363	1072479	1103637	1115646	1076862	1107452	1107452	1002272	1103606	1115689	1171660	1171677	9

MECH. CODE

12

PLATEN INDEXING CHART

(Continued From Page 35)

PLATEN RATCHET P/N's					DETENT LEVER POSITIONS						'DETENT P/N's			DETENT SPRINGS			INDEX PAWLS			UPPER INDEX ** PAWL STOP		LINE SPACE LEVERS				
No of Teeth	Model A	Model B Universal	Model C Old Style	Let. C Model D	1 pos	Teeth Index	2 pos	Teeth Index	3 pos	Teeth Index	Mod A	Mod B	Mod C&D Roller	Mod A	Mod B	Mod C Mod D	Mod A	Mod B	Mod C Mod D	Mod A	Mod B	Mod C	Mod. D Std.	Mod. D Exec.	Stamp No	
52	-----	1104052	-----	1155152	43.3	2	23.7	4	15.8	6	-----	1103634	-----	-----	1103637	-----	-----	1107452	-----	-----	-----	1103611	-----	-----	--	
53	1002253	1104053	1117153	1155153	48.2	2	32.1	3	24.1	4	1076884	1103634	1000363	1072479	1103637	1115646	1076862	1107452	1107452	1002272	1103606	1115690	1171661	1171678	10	
54	-----	1104054	1117154	1155154	49.1	2	24.6	4	16.4	6	-----	1103634	1000363	-----	1103637	1115646	-----	1107452	1107452	-----	1103611	1115691	1171662	1171679	11	
55	1002255	1104055	1117155	1155155	50.0	2	33.3	3	25.0	4	1076886	1103634	1000363	1072479	1103637	1115646	1076862	1107452	1107452	1002272	1103606	1115690	1171661	1171678	10	
56	-----	1261956	1117156	1155156	50.9	2	34.0	3	25.5	4	1076884	1103634	1000363	1072479	1103637	1115646	1076862	1107452	1107452	1002272	1103607	1115691	-----	-----	11	
56	-----	1261956	-----	1155156	50.9	2	25.5	4	17.0	6	-----	1103634	-----	-----	1103637	-----	-----	1107452	-----	-----	-----	1103612	-----	-----	-----	--
57	1002257	1104057	1117157	1155157	51.8	2	34.6	3	25.9	4	1076884	1103634	1000363	1072479	1103637	1115646	1076862	1107452	1107452	1002272	1103607	1115692	1171663	1171680	12	
58	1002258	1104058	1117158	1155158	52.8	2	35.2	3	26.4	4	1076886	1103634	1000363	1072479	1103637	1115646	1076862	1107452	1107452	1002272	1103607	1115692	1171663	1171680	12	
58	-----	1104058	1117158	1155158	52.8	2	26.4	4	17.6	6	-----	1103634	1000363	-----	1103637	1115646	-----	1107452	1107452	-----	1103612	1115693	1171664	1171681	13	
59	1002259	1104059	1117159	1155159	53.7	2	35.8	3	26.8	4	1076886	1103634	1000363	1072479	1103637	1115646	1076862	1107452	1107452	1002273	1103607	1115692	1171663	1171680	12	
60	1002260	1104060	1117160	1155160	54.6	2	36.4	3	27.3	4	1076886	1103634	1000363	1072479	1103637	1115646	1076862	1107452	1107452	1002273	1103608	1115694	1171665	1171682	14	
60	-----	1104060	1117160	1155160	54.6	2	27.3	4	18.2	6	-----	1103634	1000363	-----	1103637	1115646	-----	1107452	1107452	-----	1103613	1115681	1171652	1171669	1	
61	1002261	1104061	1117161	1155161	55.5	2	37.0	3	27.7	4	1076884	1103634	1000363	1072479	1103637	1115646	1076862	1107452	1107452	1002273	1103608	1115694	1171665	1171682	14	
62	1002262	1104062	1117162	1155162	56.4	2	37.6	3	28.2	4	1076884	1103634	1000363	1072479	1103637	1115646	1076862	1107452	1107452	1002273	1103608	1115694	1171665	1171682	14	
62	-----	1104062	1117162	1155162	56.4	2	28.2	4	18.8	6	-----	1103634	1000363	-----	1103637	1115646	-----	1107452	1107452	-----	1103613	1115691	1171662	1171679	11	
63	-----	1104063	-----	-----	57.3	2	38.2	3	28.7	4	-----	1103634	-----	-----	1103637	-----	-----	1107452	-----	-----	-----	1103608	-----	-----	-----	--
64	-----	-----	-----	1155164	58.2	2	38.8	3	29.1	4	-----	-----	-----	-----	-----	-----	-----	-----	-----	-----	-----	-----	-----	-----	-----	--
64	-----	-----	-----	1155164	58.2	2	29.1	4	19.4	6	-----	-----	-----	-----	-----	-----	-----	-----	-----	-----	-----	-----	-----	-----	-----	--
65	-----	-----	-----	-----	59.1	2	39.4	3	29.6	4	-----	-----	-----	-----	-----	-----	-----	-----	-----	-----	-----	-----	-----	-----	-----	--
66	1002266	1104066	1117166	1155166	60.0	2	40.0	3	30.0	4	1076884	1103634	1000363	1072479	1103637	1115646	1076862	1107452	1107452	1002273	1103609	1115695	1171666	1171683	15	
66	-----	1104066	1117166	1155166	60.0	2	30.0	4	20.0	6	-----	1103634	1000363	-----	1103637	1115646	-----	1107452	1107452	-----	1103614	1115693	1171664	1171681	13	

*Detent Arm P/N	Stamp
1076864	29
1076880	31
1072875	Unstamped
1076882	45
1076886	55
1076884	62

** Pawl Stop P/N	Stamp
1076865	29
1000325	Unstamped
1076866	45
1002272	55
1002273	62

Model	Product Code
A1-A4	11
B1-B4	12
B I/O	14

CAUSE OF FAILURE	CODE
Bent/Warped	01
Binding/Sticking	02
Broken/Cracked	03
Burned/Pitted/Burred	04
Card/Tape Jam	05
Dirty/Corroded	06
Loose/Solder Conn.	07
Lubrication	08
Noise (Mech.)	09
Off/Off Registration	10
Open	11
Out of Adjustment	12
Out of Alignment	13
Shorted/Grounded	14
Stripped	15
Wiring Defects	16
Weak	17
Worn	18
No Trouble Found	19
Other	20
Standby	21
Operator Preference*	22
Sound Distortion	23
Beat the Operation	24
Flicking	25
Operator Error	26
Noise Electrical	27
Low Contracts	28

*Operator Preference – Adjustment due to operator opinion which is not a malfunction of the machine.

MACHINE IDENTIFICATION CODE Model Code (1st & 2nd Digit) (Machine Features)		FORMSWRITERS	
Model Code		51	*84 Character Keyboard without Partial Carr. Return or Decimal Tabulation
STANDARD Typewriters With Fabric Ribbon		52	88 Character Keyboard without Partial Carr. Return or Decimal Tabulation
11	*84 Character Keyboard without Partial Carr. Return, Decimal Tab or Electronic Tab	53	84 Character Keyboard with Partial Carr. Return
12	88 Character Keyboard without Partial Carr. Return, Decimal Tab or Electronic Tab	54	88 Character Keyboard with Partial Carr. Return
13	84 Character Keyboard with Partial Carr. Return	55	84 Character Keyboard with Decimal Tabulation
14	88 Character Keyboard with Partial Carr. Return	56	88 Character Keyboard with Decimal Tabulation
15	*84 Character Keyboard with Decimal Tabulation	TOLL BILLER	
16	88 Character Keyboard with Decimal Tabulation	57	86 Character Keyboard
17	84 Character Keyboard with Electronic Tabulation	58	88 Character Keyboard
18	88 Character Keyboard with Electronic Tabulation	INPUT – OUTPUT	
STANDARD Typewriters With Carbon Ribbon		31	84 Character Keyboard Model B
81	86 Character Keyboard without Decimal Tab	32	88 Character Keyboard Model B
82	88 Character Keyboard without Decimal Tab	*86 Character Keyboard on Model C, 88 Character Keyboard on Model D	
85	86 Character Keyboard with Decimal Tab	All Model Carriage Lengths (3rd Digit)	
86	88 Character Keyboard with Decimal Tab	Code	
EXECUTIVE Typewriters		1	12" or 13" Carriage
41	*84 Character Keyboard with Carbon Ribbon and with other than 1/45 unit escapement	2	16" or 17" Carriage
42	88 Character Keyboard with Carbon Ribbon and with other than 1/45 unit escapement	3	20" Carriage
43	*84 Character Keyboard with Carbon Ribbon and with 1/45 unit escapement	4	24" Carriage
44	88 Character Keyboard with Carbon Ribbon and with 1/45 unit escapement	5	30" Carriage
45	*84 Character Keyboard with Fabric Ribbon and with other than 1/45 escapement	All Model Pitch Codes (4th Digit)	
46	88 Character Keyboard with Fabric Ribbon and with other than 1/45 escapement	Code	
47	*84 Character Keyboard with Fabric Ribbon and with 1/45 unit escapement	0	11 Pitch
48	88 Character Keyboard with Fabric Ribbon and with 1/45 unit escapement	1	12 Pitch
		2	10 Pitch
		3	9 Pitch
		4	8 Pitch
		5	6 2/5 Pitch
		6	14 Pitch
		7	1/45 Unit (Executive)
		8	1/32 Unit (Executive)
		9	1/36 Unit (Executive)



International Business Machines Corporation
Office Product Division
Customer Engineering