

ESCON
INSTALLATION INSTRUCTIONS
MODEL E-A
TYPEWRITER MAGNET ASSEMBLIES

VOLUME 2 OF 2

Figures

ESCON PRODUCTS, INC.
171 Mayhew Way, Suite 104
Pleasant Hill, California 94523

ESCON
INSTALLATION INSTRUCTIONS
MODEL E-A
TYPEWRITER MAGNET ASSEMBLIES

VOLUME 2 OF 2

Figures

ESCON PRODUCTS, INC.
171 Mayhew Way, Suite 204
Pleasant Hill, California 94523

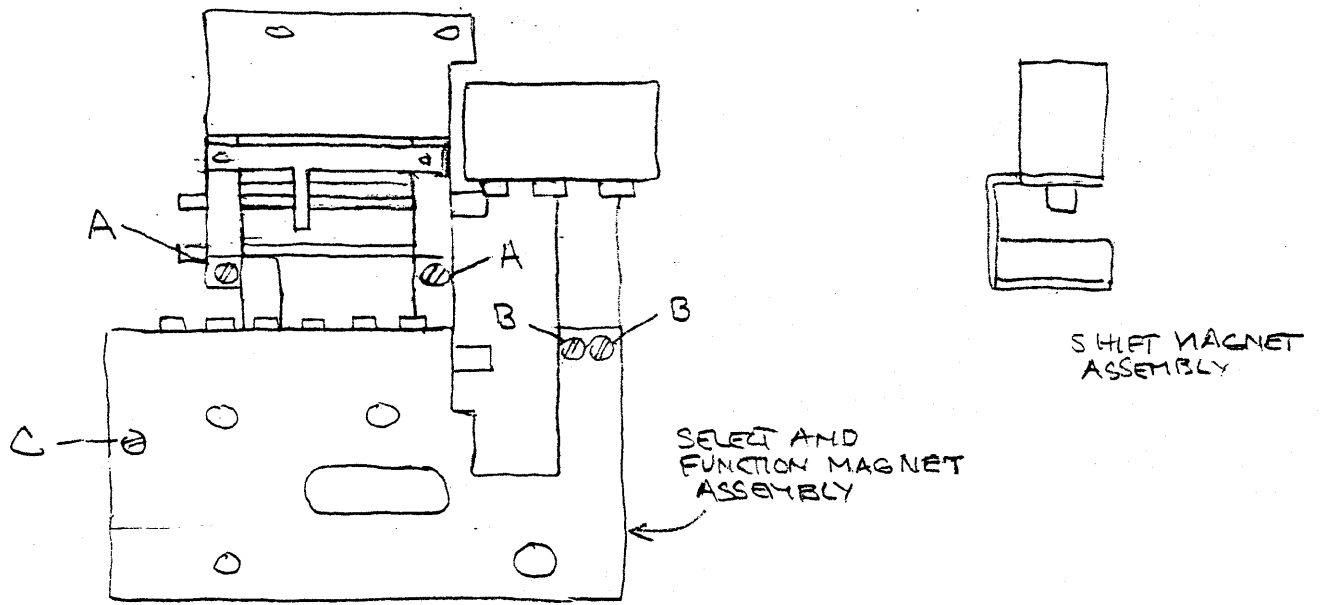


FIGURE 1

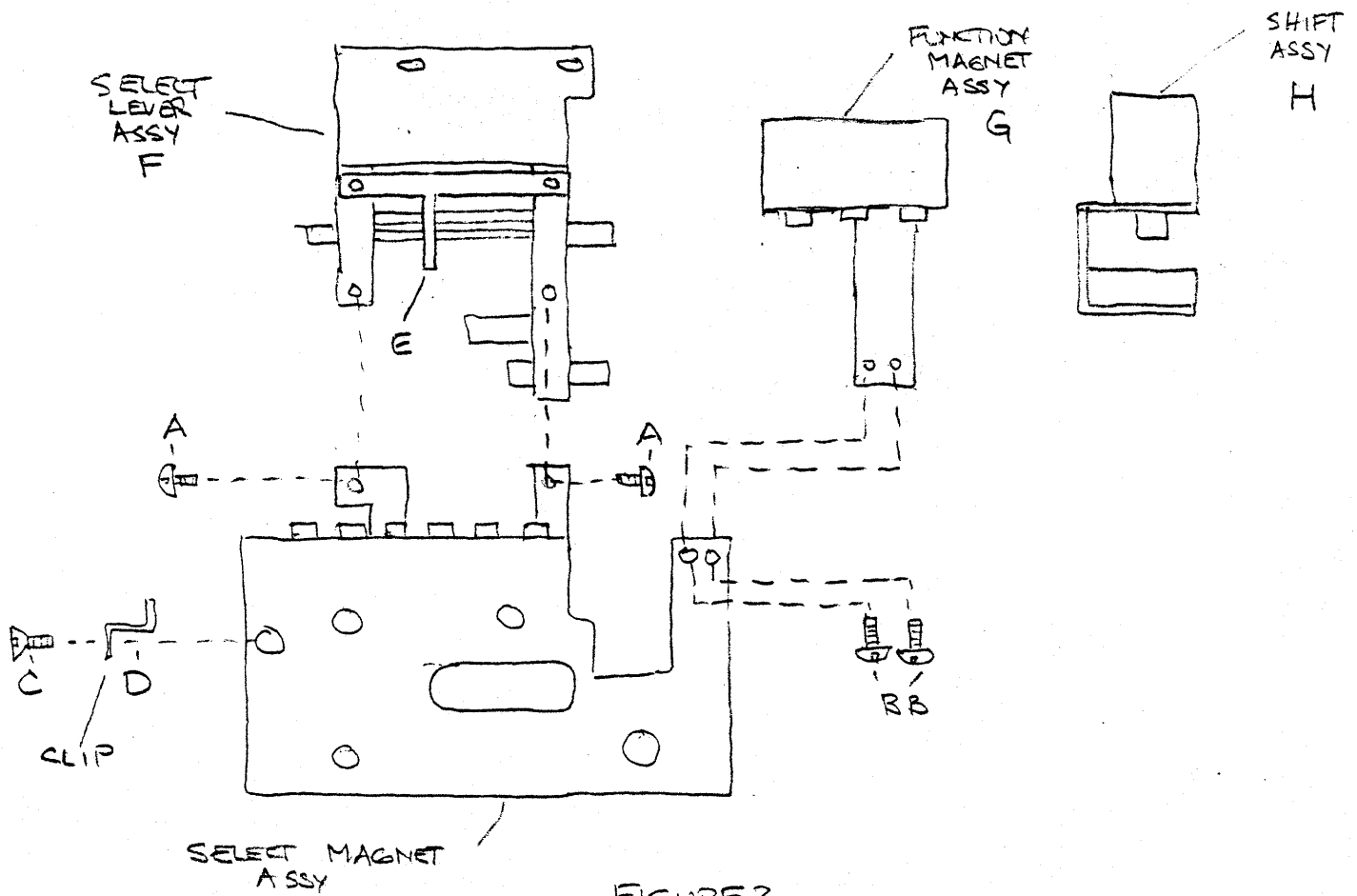


FIGURE 2

TYPEWRITER WIRING DIAGRAM

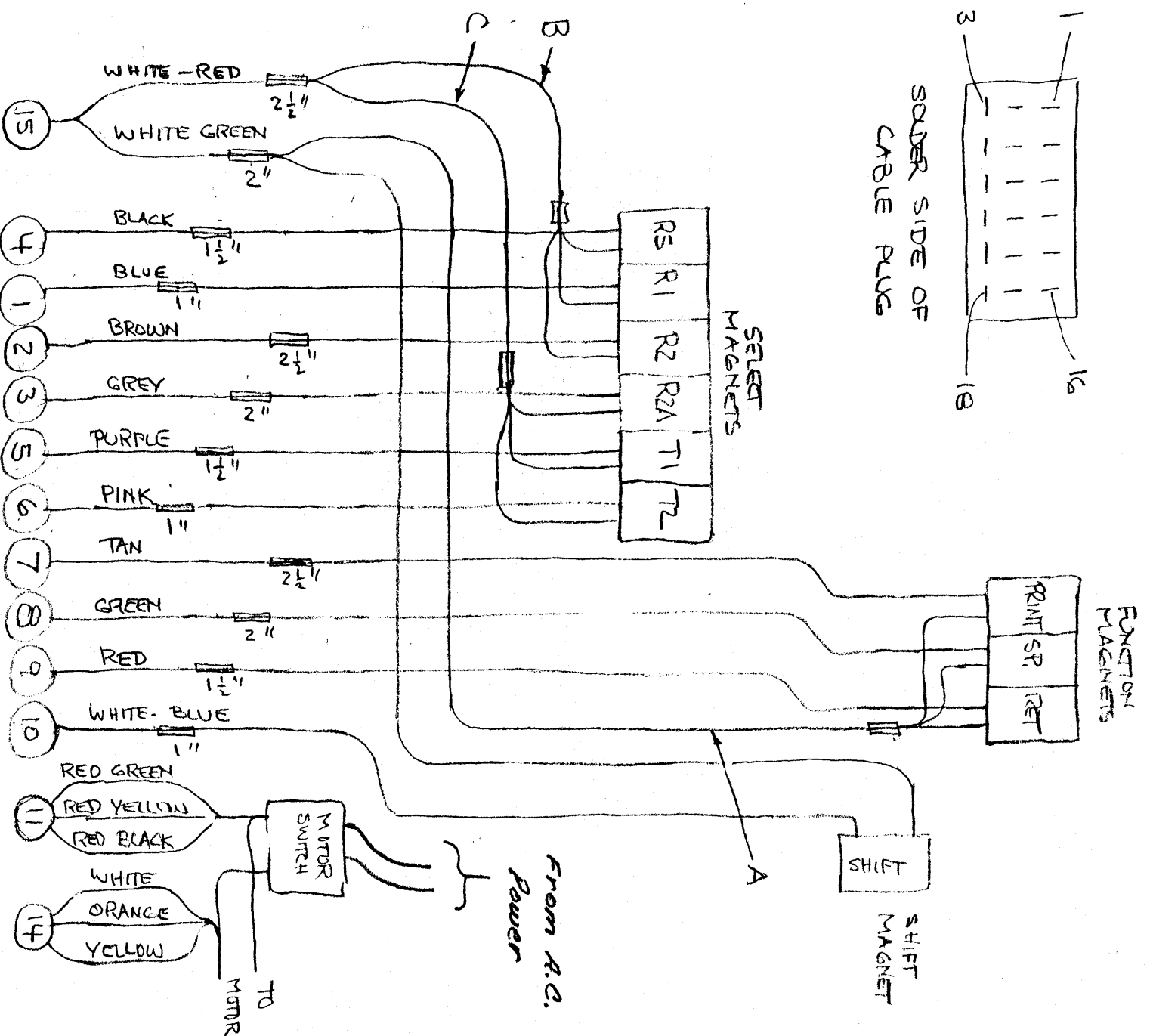
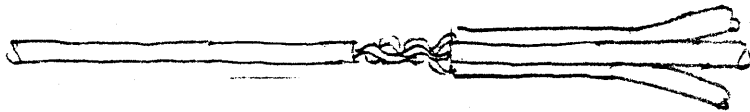


FIGURE 3
PIN NUMBER AT PLUG



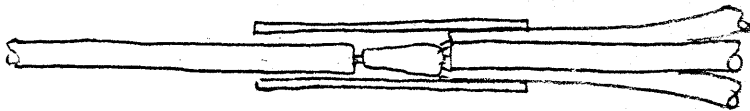
CUT AND
STRIP WIRES



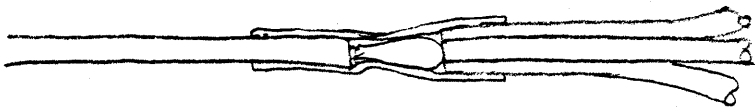
TWIST WIRES
TOGETHER



SOLDER



SLIDE ON
SHRINK TUBING



SHRINK TUBING
BY HEATING WITH
SOLDERING IRON

FIGURE 4
JOINING MAGNET WIRES

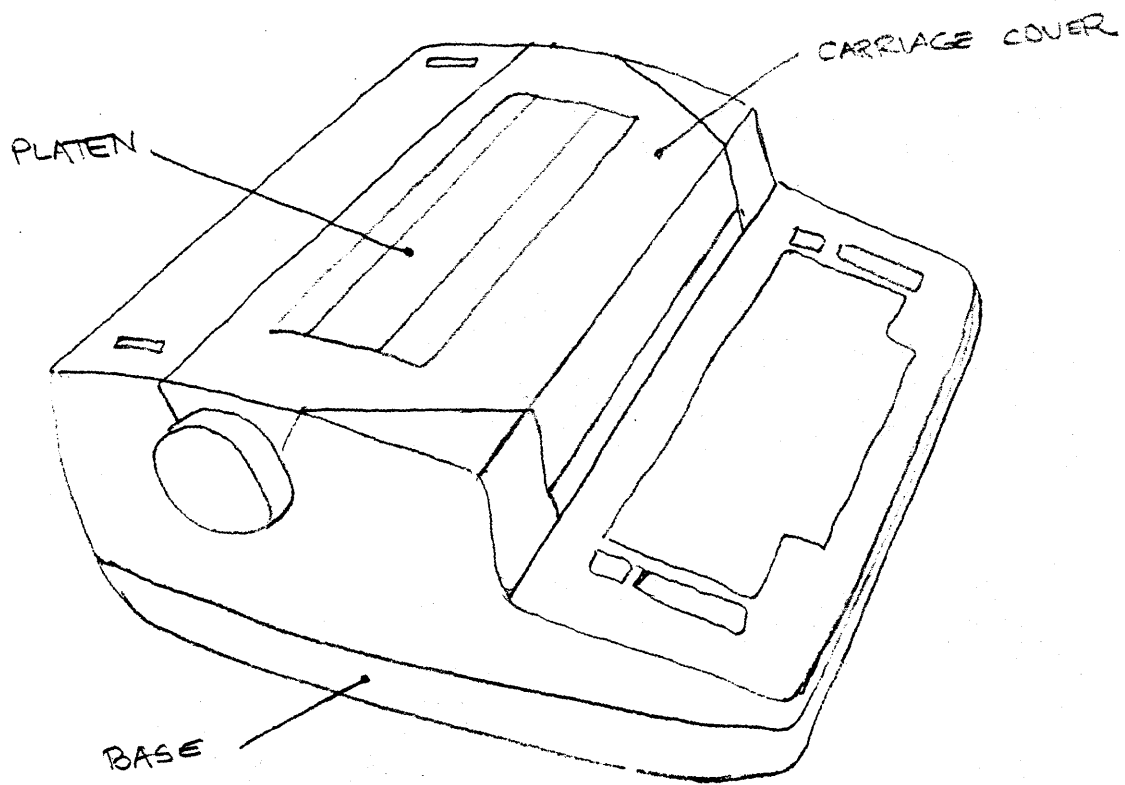


FIGURE 5

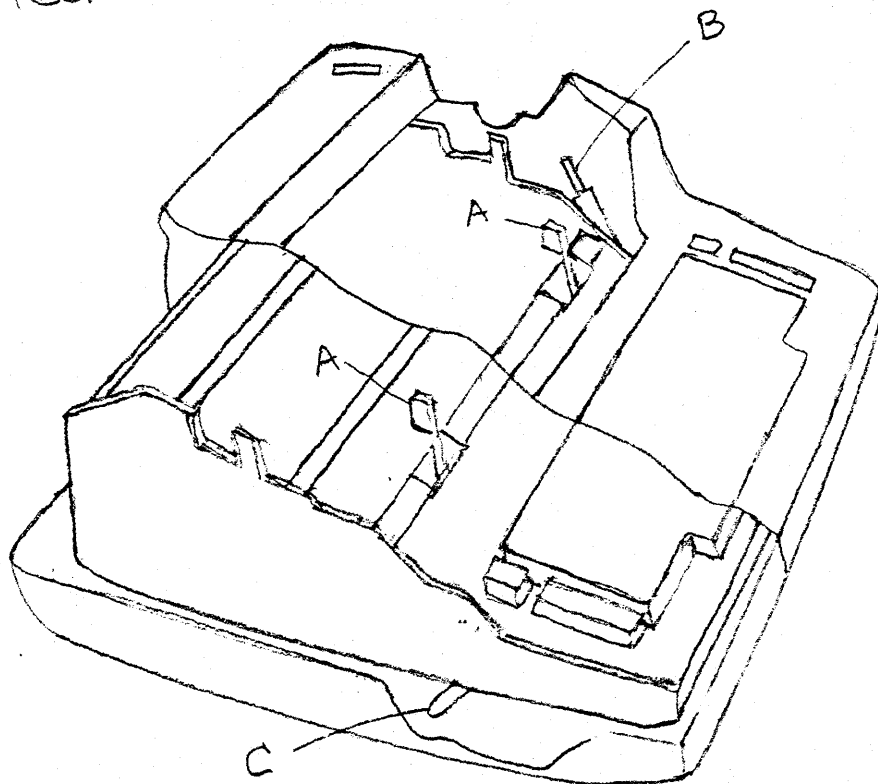


FIGURE 6

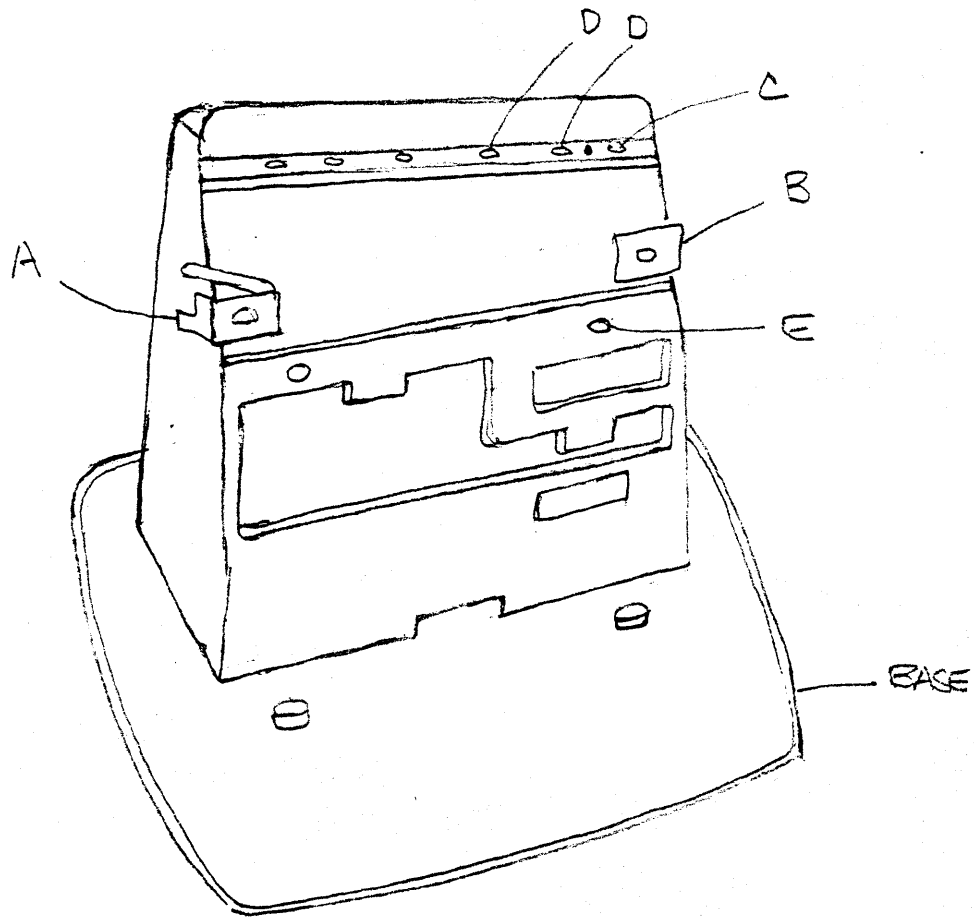


FIGURE 7

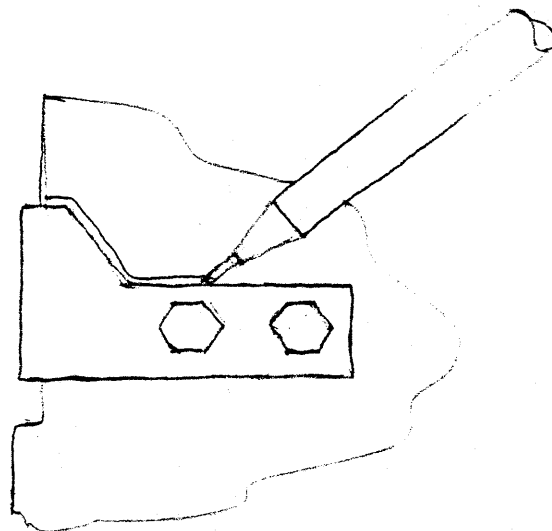
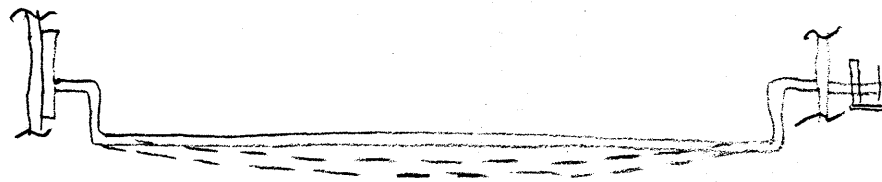
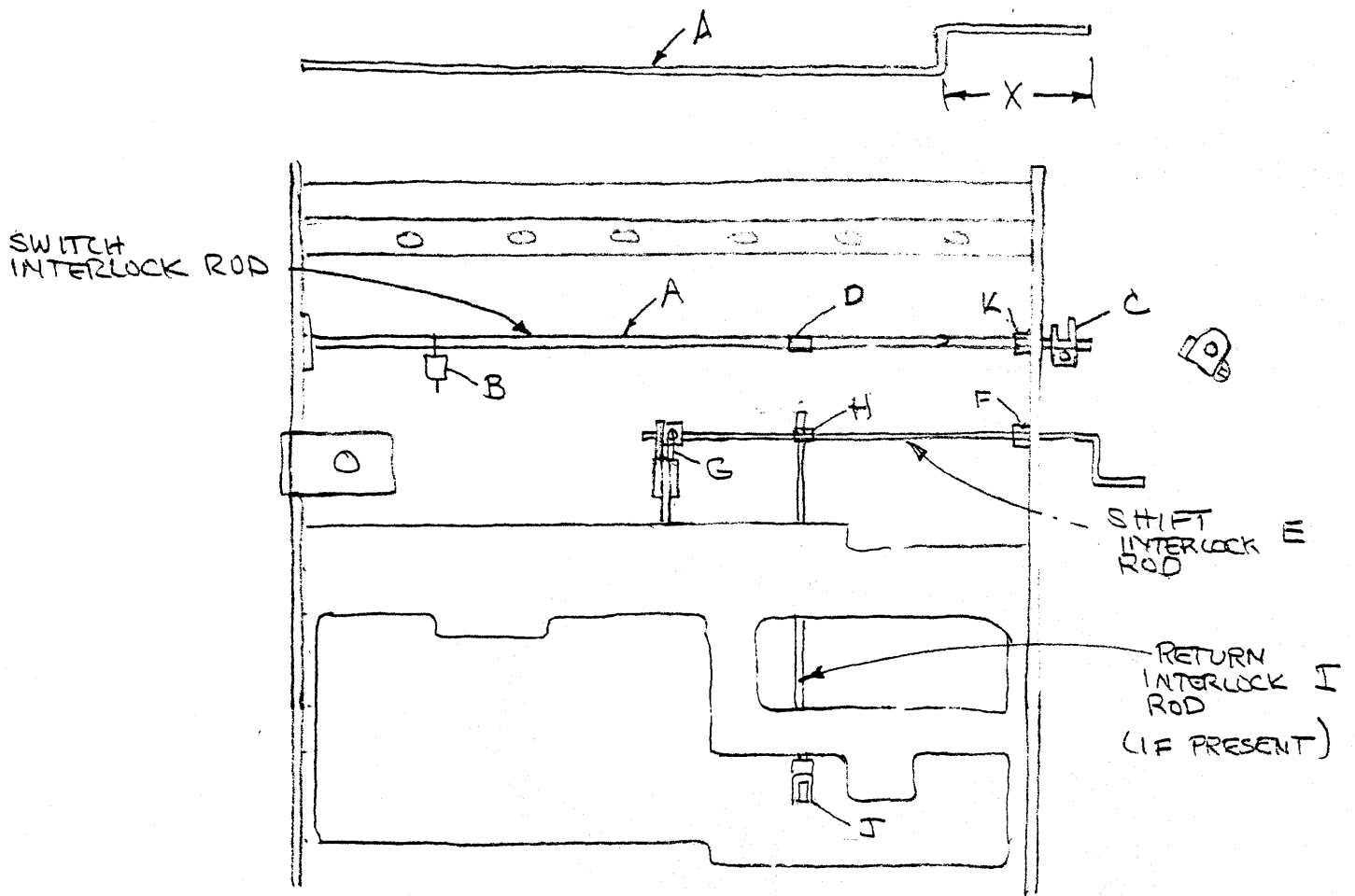
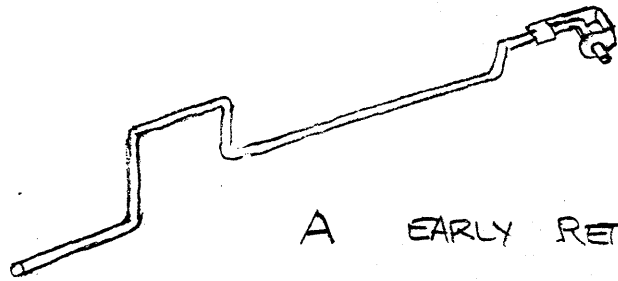


FIGURE 8

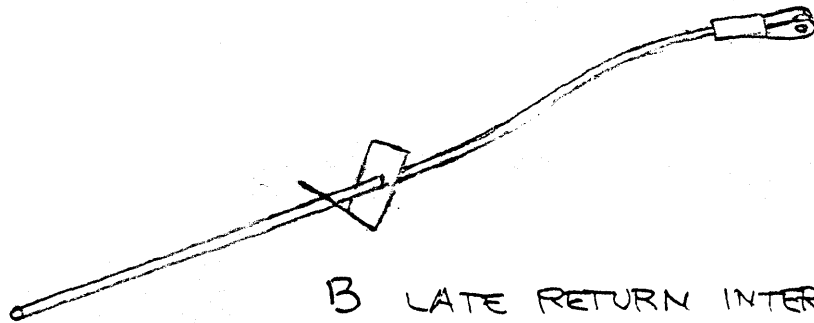


BOWING SWITCH INTERLOCK
 ROD TO DISENGAGE LEFT END
 VIEWED FROM ABOVE

FIGURE 9



A EARLY RETURN INTERLOCK ROD



B LATE RETURN INTERLOCK ROD

FIGURE 10

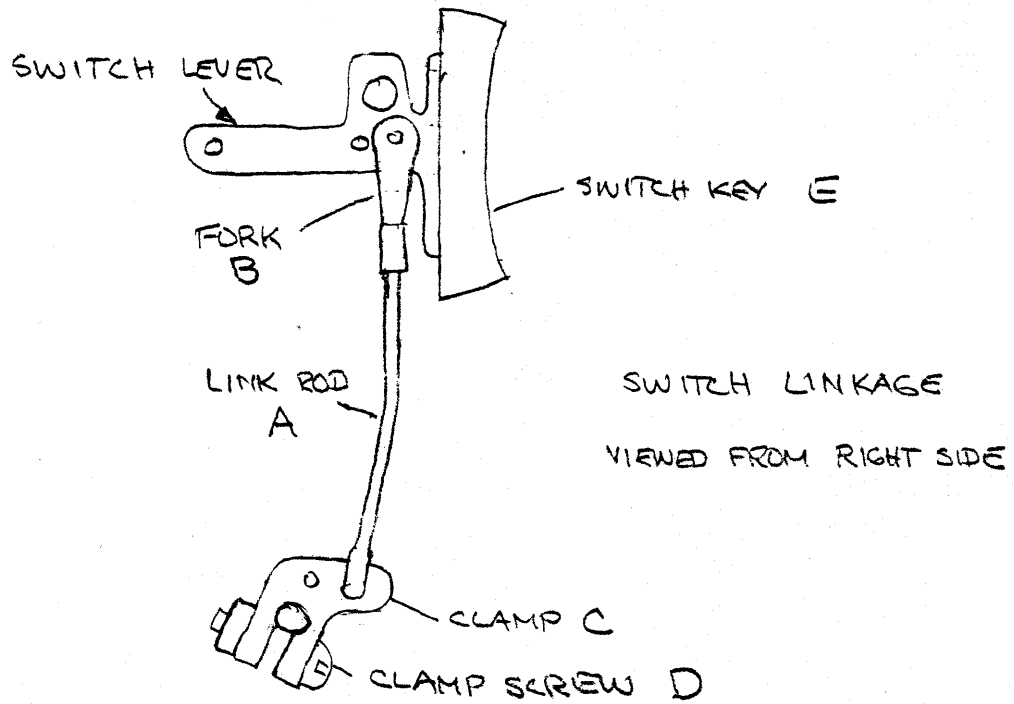


FIGURE 11

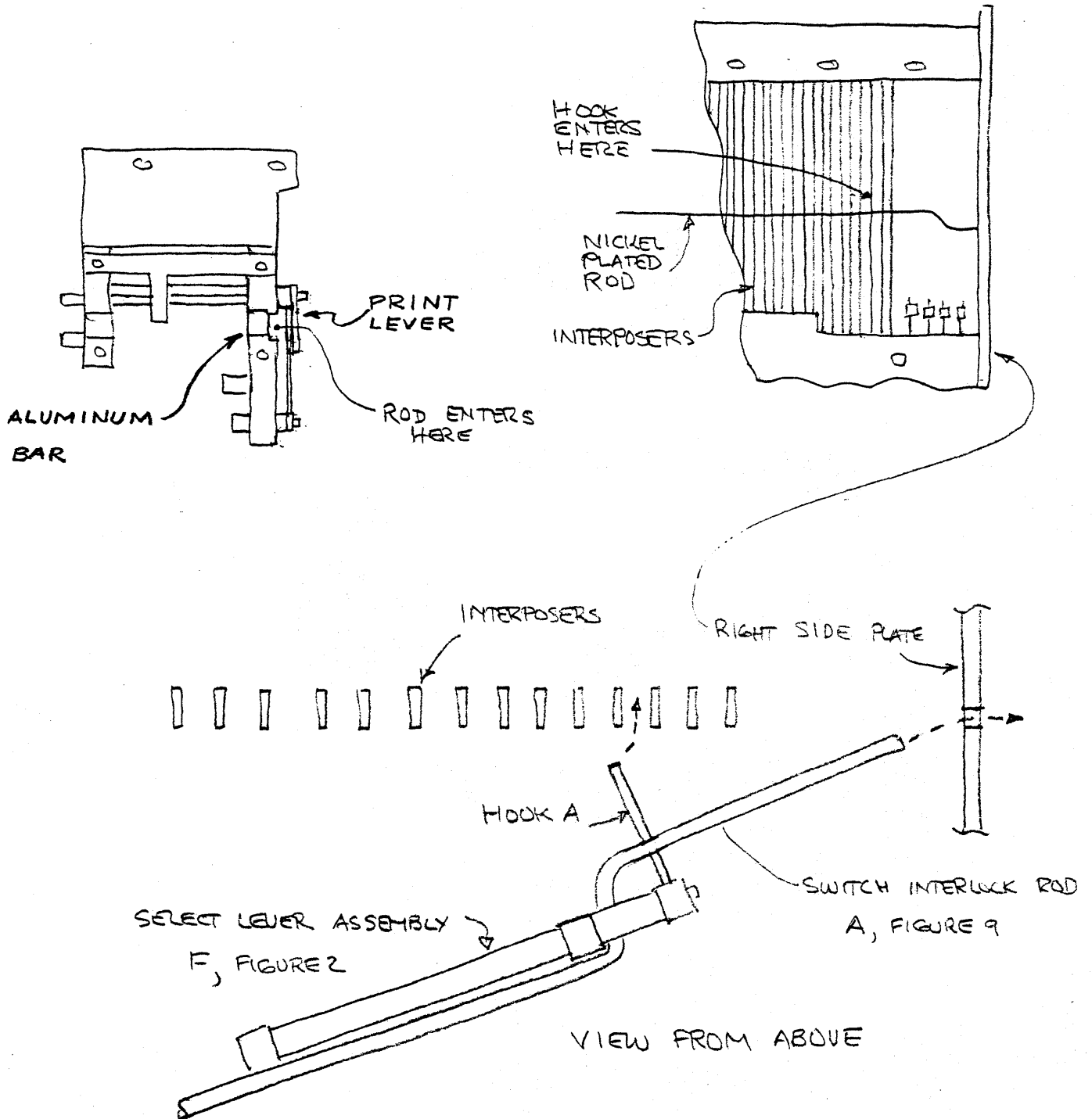


FIGURE 12

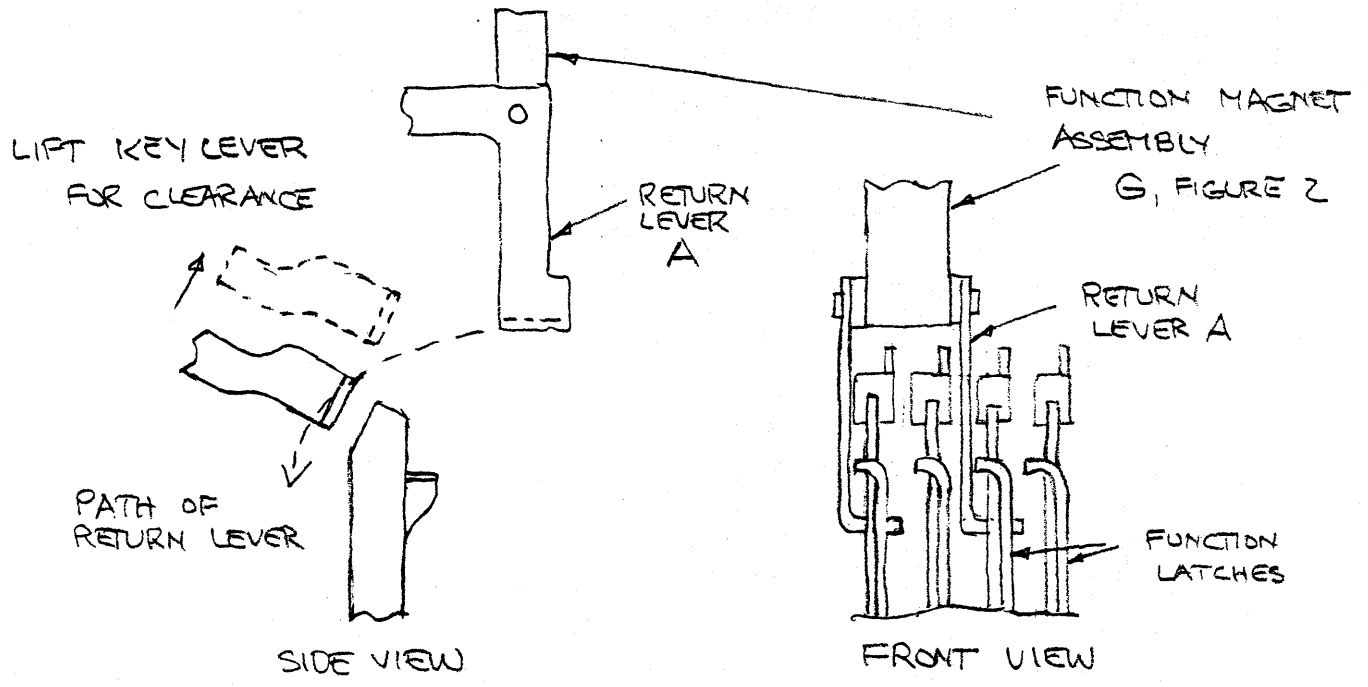
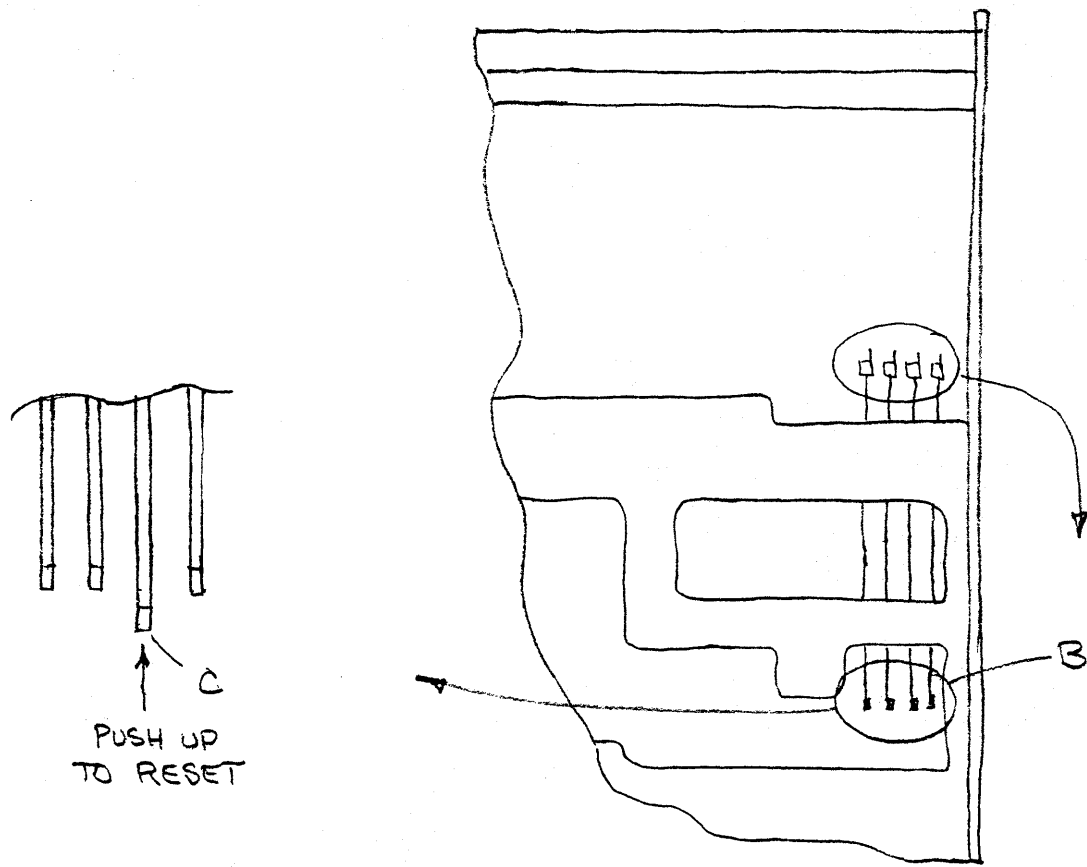


FIGURE 13

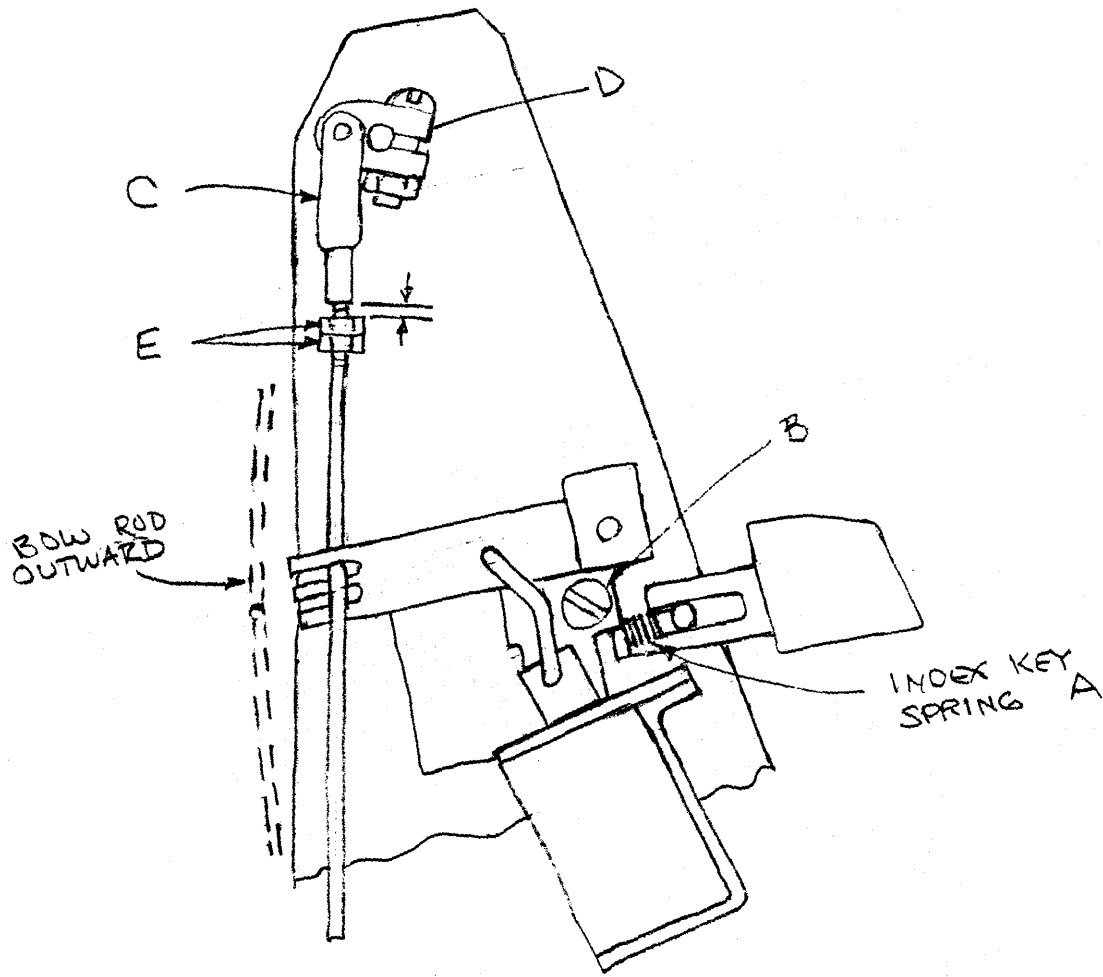


FIGURE 14

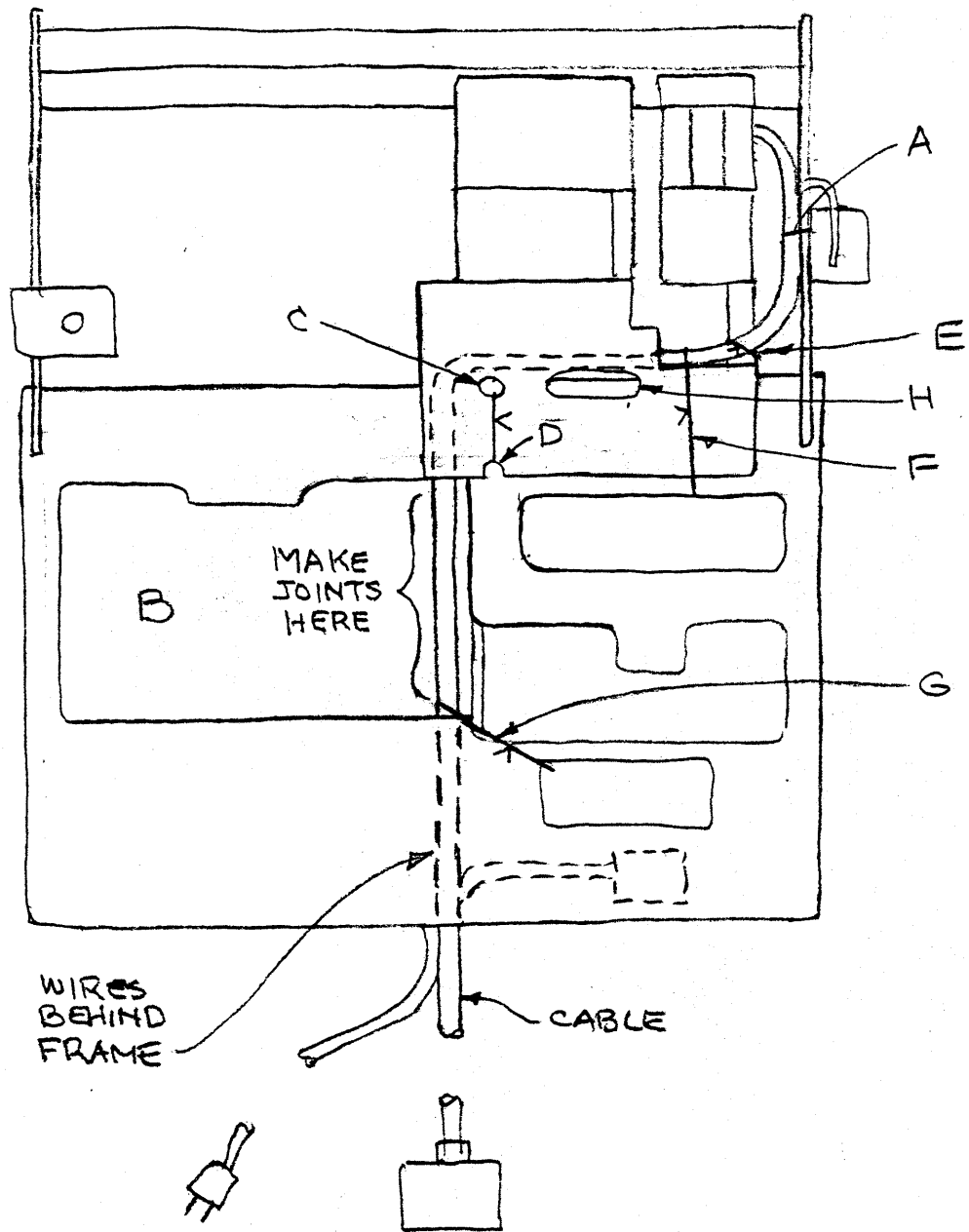


FIGURE 15

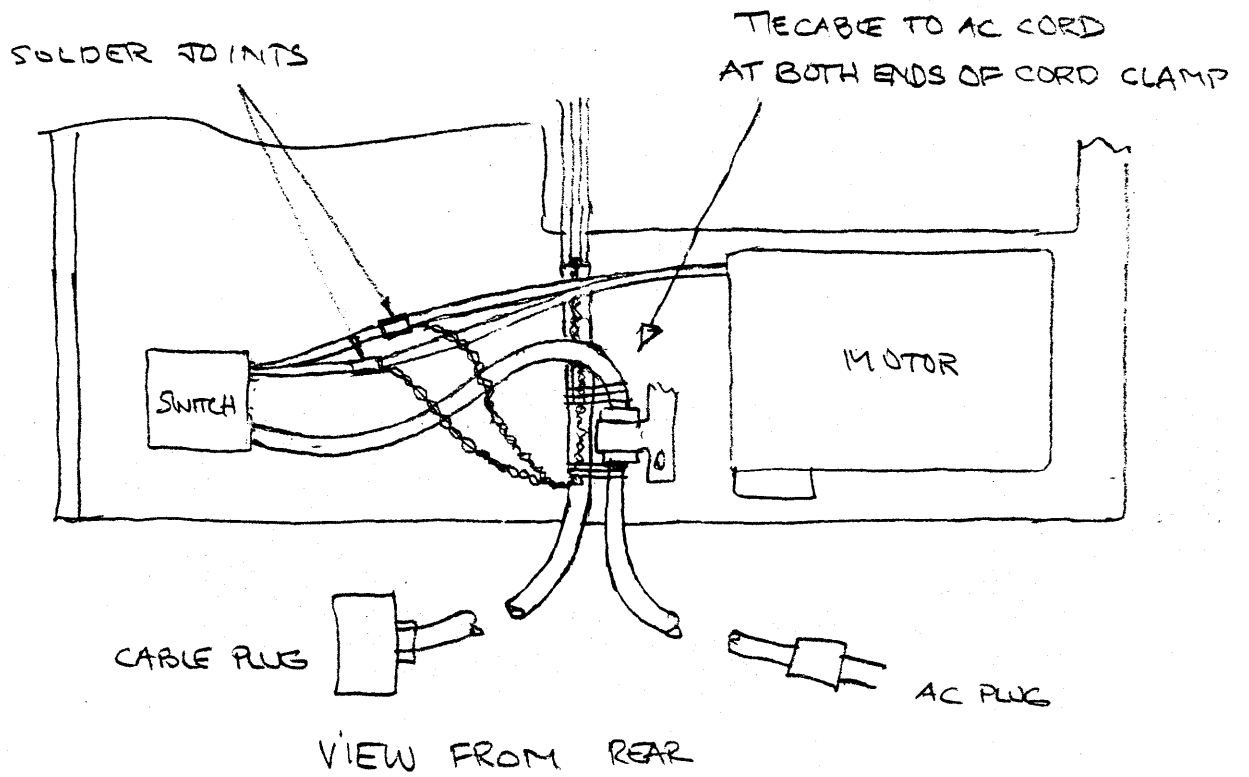
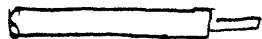
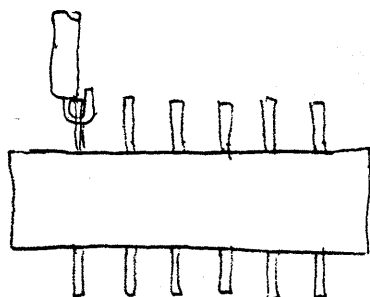


FIGURE 16

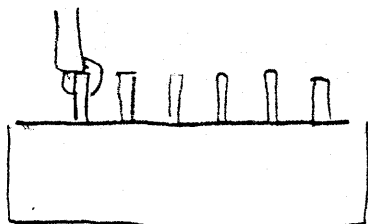


STRIP WIRE



PASS WIRE THROUGH
HOLE AND BEND
AROUND TAB

KEEP INSULATION
CLOSE TO TAB



SOLDER TO TAB

ATTACHMENT OF WIRES TO PLUG

FIGURE 17

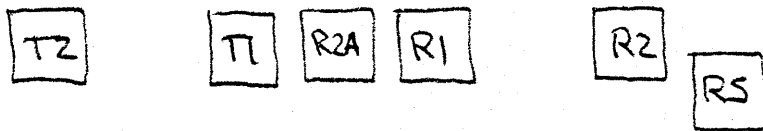
SELECTRIC CODE TABLE

POSITIVE ROTATION IS CLOCKWISE

1 MEANS MAGNET FULLS

TLT	R5 TI T2	R1		R2		R2A		R1		R2	
		0	1	0	1	0	1	0	1	0	1
3	000	-	Q	Q	+	Y	P	P	J		
		-	q	q	=	y	p	p	j		
2	001	B	K	K	N	H	E	E	T		
		b	k	k	n	h	e	e	t		
1	010	W	I	I	'	S	"	"	1/4		
		w	i	i	.	s	"	"	1/2		
0	011	(¢	¢	@)	%	%	Z		
)	¢	¢	2	0	5	5	z		
	ROT- ATE	-5	-3	-3	-1	-4	-2	-2	0		
		0	2	2	4	1	3	3	5		
3	100	J	'	'	F	?	:	:	G		
		j	'	'	f	/	:	:	g		
2	101	T	C	C	U	L	D	D	X		
		t	c	c	u	l	d	d	x		
1	110	1/4	A	A	V	O	R	R	M		
		1/2	a	a	v	o	r	r	m		
0	111	Z	*	*	#	\$	&	&	±		
		z	*	*	#	\$	&	&	±		

LOCATION OF LATCHES
VIEWED FROM BELOW



LOCATION OF MAGNETS
VIEWED FROM BELOW

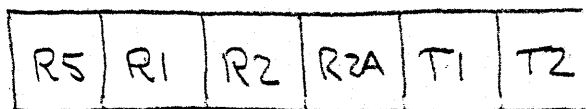
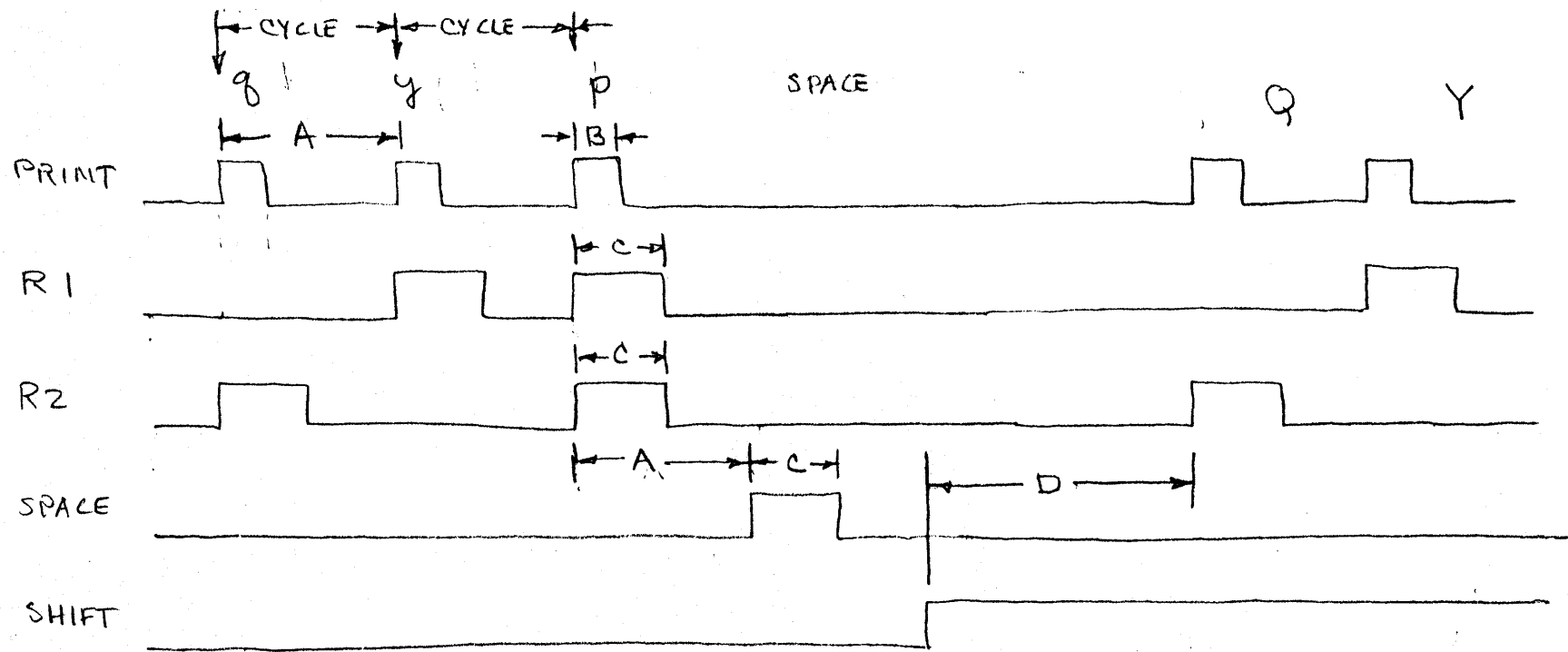


FIGURE 18

7/7/77

ESCON TIMING CHART



A = 74 MS MINIMUM (13.5 CHARACTERS PER SECOND)

B = 15 MS MIN. $\frac{A}{4}$ MAX

C = 25 MS MIN $\frac{A}{2}$ MAX

D = 1.5 x A MIN.

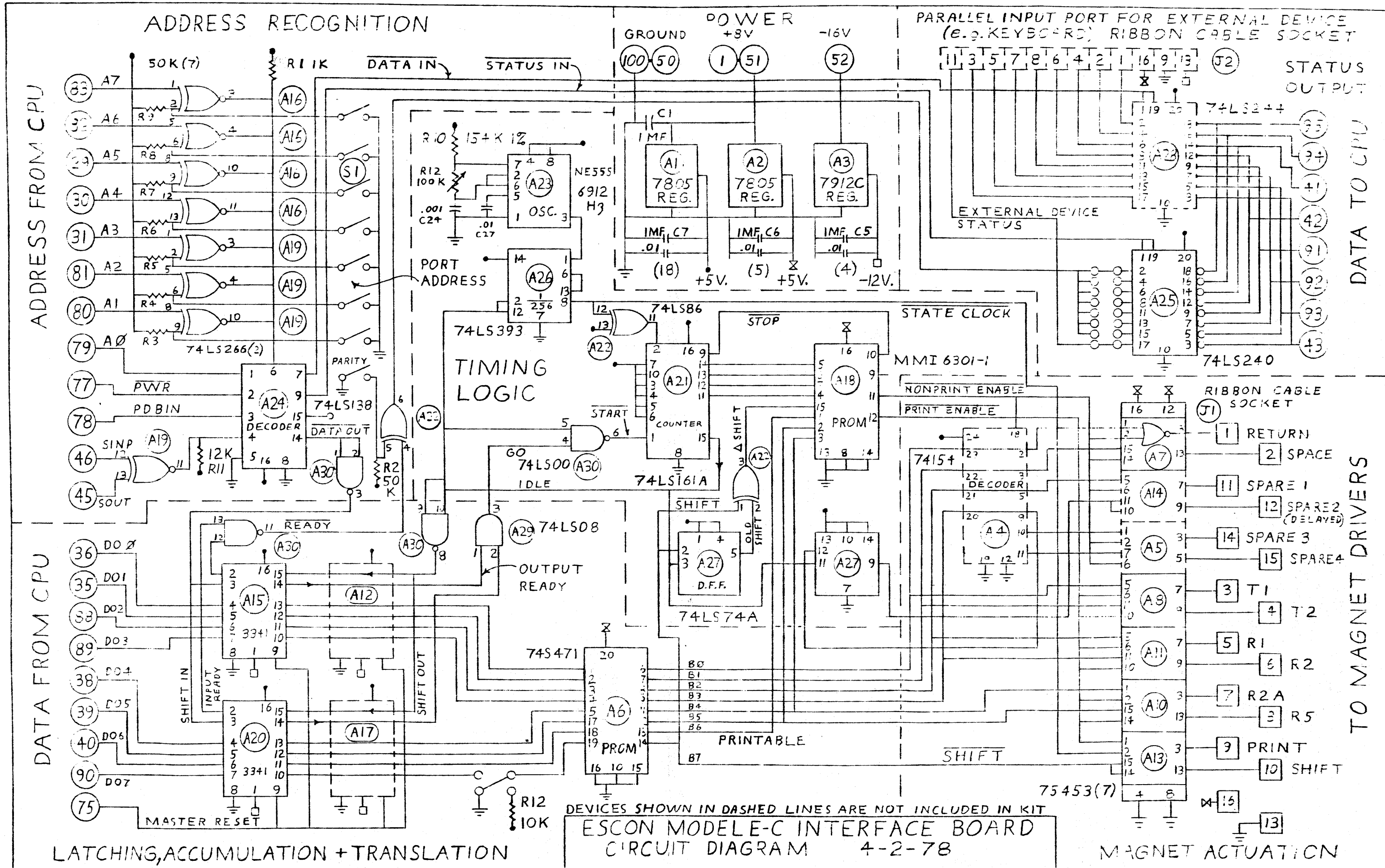
ALLOW 100 + 6 x NO. OF CHARACTERS IN LAST LINE
MILLISECONDS FOR CARRIAGE RETURN

SHIFT AND PRINT MUST NOT OCCUR ON SAME CYCLE

SHIFT CAN OCCUR DURING CARRIAGE RETURN

SPACE CAN OCCUR DURING SHIFT

FIGURE 19



LATCHING, ACCUMULATION + TRANSLATION

ESCON MODEL C INTERFACE BOARD
CIRCUIT DIAGRAM 4-2-78

MAGNET ACTUATION