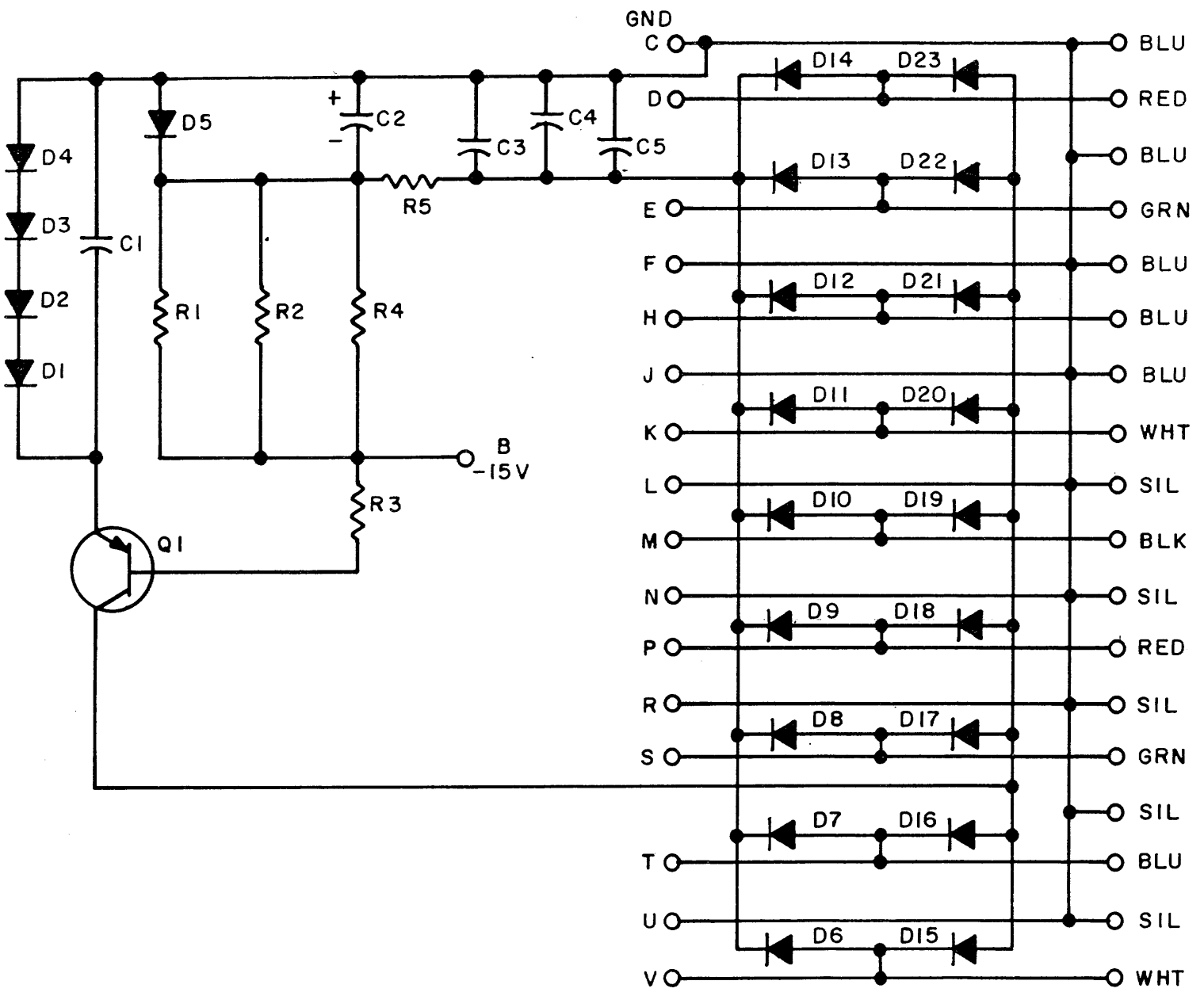


THIS SCHEMATIC IS FURNISHED ONLY FOR TEST AND MAINTENANCE PURPOSES. THE CIRCUITS ARE PROPRIETARY IN NATURE AND SHOULD BE TREATED ACCORDINGLY. COPYRIGHT 1967 BY DIGITAL EQUIPMENT CORPORATION



Q1	TSTR. DEC6534B OR TSTR. DEC3638B	15-03409-01 15-02979
R5	RES. 22 1/4W 5% CC	13-01969
R1 THRU R4	RES. 1.5K 1/4W 5% CC	13-00391
D6 THRU D23	DIO. D664	11-00114
D1 THRU D5	DIO. D662	11-00113
C1, C3, C4, C5	CAP. .01MFD 100V 20% DISC	10-01610
C2	CAP. 3.9MFD 10V 10% S. TANT	10-00064
	PARTS LIST	A-PL-W841-0-0
REFERENCE DESIGNATION	DESCRIPTION	PART NO.

PARTS LIST

REVISIONS	CHK	CHG NO.	REV.
	MM	00002	C
	MM	00001	B
	MM	00000	A

DRN. M.HALLER	DATE 12-12-67
CHK'D	DATE
ENG. C.S.FISK	DATE 12-12-67
PROD.	DATE

TRANSISTOR & DIODE CONVERSION CHART			
DEC	EIA	DEC	EIA
D662	1N645		
D664	1N3606		
DEC3638B	2N3638		
DEC6534B	MPS6534		

**digital**  
EQUIPMENT CORPORATION  
MAYNARD, MASSACHUSETTS

TITLE CABLE TERMINATION W841			
SIZE B	CODE CS	NUMBER W841-0-1	REV. C
PRINTED CIRCUIT REV. C			