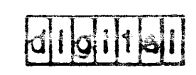


TITLE:	TK50Z-F UNIT ASSEMBLY	SHEET 2 OF 4	SIZE CODE B DD	NUMBER TK50Z-F-DBU	REV. A
--------	--------------------------	--------------	--------------------------	-----------------------	-----------

FIND NO.	DRAWING NO.	DESCRIPTION	TYPE	FIND NO.	DRAWING NO.	DESCRIPTION	TYPE
1	MP-02394-01	TK50Z-F UNIT ASSEMBLY (MP)	-				
	B-TC-TK50Z-F-DBU	TK50Z-F UNIT ASSEMBLY (TC)	-				
	E-UA-TK50Z-F-DBU	TK50Z-F UNIT ASSEMBLY (UA)	E/M				
	K-PL-TK50Z-F-DBP	TK50Z-F UNIT ASSEMBLY (PL)	E/M				
	D-MD-7432769-0-DBU	COVER, BOTTOM	M	5	D-AD-7022652-0-DBU	DRIVE ASSEMBLY	E/M
	C-MD-7433070-0-DBU	PANEL, COVER	M		K-PL-7022652-0-DBP	DRIVE ASSEMBLY (PL)	E/M
	D-MD-7433609-0-DBU	MEDALLION, VAXSTATION 2000	M		D-MD-7432764-0-DBU	BRACKET, INNER	M
	A-PS-1700606-0-0	CORD, POWER, TERMINATED, 3 COND.	E/M				
	A-PS-1701351-0-0	CABLE ASSEMBLY, 50 COND, MOLDED, SHIELDED	E/M				
	A-PS-3626124-0-0	LABEL, VAXSTATION 2000 PRODUCT INFO (REF)	M				
				6	K-PL-TK50-A-DBP	TK50 OPTION MODULE KIT	E/M
				7	D-AD-7022653-0-DBU	COVER ASSEMBLY	M
					K-PL-7022653-0-DBP	COVER ASSEMBLY (PL)	M
					D-MD-7432768-0-DBU	DOOR, FRONT	M
					E-MD-7432770-0-DBU	BEZEL, FRONT	M
2	E-AD-7022650-0-DBU	CHASSIS ASSEMBLY	M				
	K-PL-7022650-0-DBP	CHASSIS ASSEMBLY (PL)	M				
	C-MD-7428807-0-DBU	SPRING, SHIELD, CHASSIS	M	8	D-1A-7022649-0-DBU	COVER, WELDMENT	M
	E-MD-7432766-0-DBU	BEZEL, REAR	M		K-PL-7022649-0-DBP	COVER, WELDMENT (PL)	M
	D-MD-7430609-0-DBU	GRIP HANDLE	M		D-MD-7433222-0-DBU	SPRING, COVER	M
	D-MD-7430610-0-DBU	BRACKET, HANDLE	M				
	D-MD-7433733-0-DBU	SCREW, SHOULDER (MODIFIED)	M				
				9	D-1A-7024501-0-DBU	COVER, SUBWELDMENT	M
					K-PL-7024501-0-DBP	COVER, SUBWELDMENT (PL)	M
3	D-1A-7023350-0-DBU	CHASSIS WELDMENT BASE	M		C-MD-7432755-0-DBU	BRACKET, SIDE	M
	K-PL-7023350-0-DBP	CHASSIS WELDMENT BASE (PL)	M		D-MD-7432756-0-DBU	COVER	M
	D-MD-7433069-0-DBU	STIFFNER, CHASSIS	M				
	D-MD-7433412-0-DBU	CHASSIS, BRACKET	M				
				10	D-AD-7022654-0-DBU	SHIELD ASSEMBLY	E/M
					K-PL-7022654-0-DBP	SHIELD ASSEMBLY (PL)	E/M
4	D-1A-7024500-0-DBU	CHASSIS, SUBWELDMENT	M		D-1A-7433951-0-DBU	PLATE, CONNECTOR, SHIELD	M
	K-PL-7024500-0-DBP	CHASSIS, SUBWELDMENT (PL)	M		K-PL-7433861-0-DBP	PLATE, CONNECTOR, SHIELD (PL)	M
	E-1A-7432757-0-DBU	CHASSIS, BASE	E/M		A-PS-1701247-0-0	CABLE ASSEMBLY, FLAT, 26 COND, 20 AWG	E/M
	K-PL-7432757-0-DBP	CHASSIS, BASE (PL)	M		A-PS-1701249-0-0	CABLE ASSEMBLY, FLAT, 26 AWG, 50 PIN	E/M
	D-MD-7432763-0-DBU	BRACKET, OUTER	M		A-PS-1700342-0-0	WIRE HARNESS ASSEMBLY, 4 COND	E/M
	D-1A-7433697-0-DBU	BRACKET, HANDLE	M		A-PS-1701397-0-0	WIRE HARNESS, 18 AWG, 4 COND	E/M
	K-PL-7433697-0-DBP	BRACKET, HANDLE (PL)	M				

TYPE: E ELECTRICAL
M MECHANICAL
E/M ELECTRO/MECHANICAL

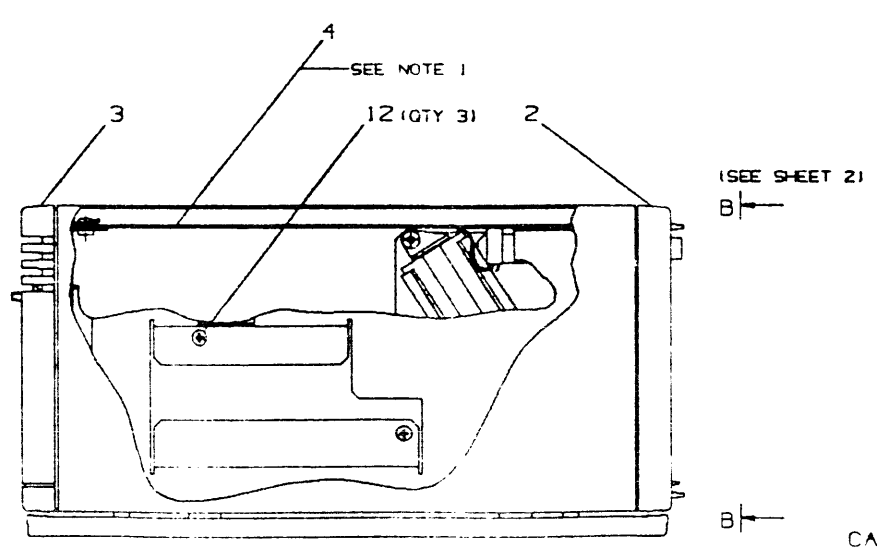
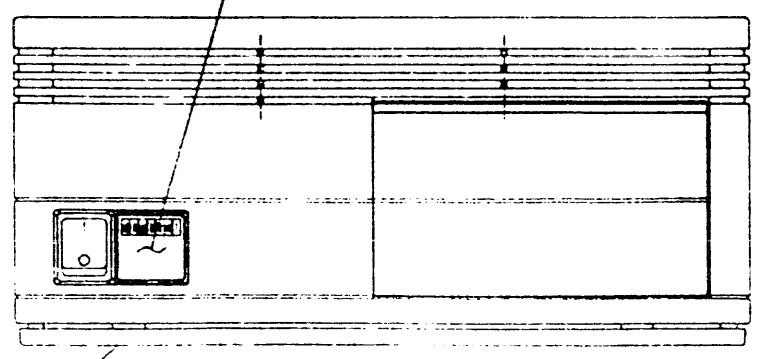
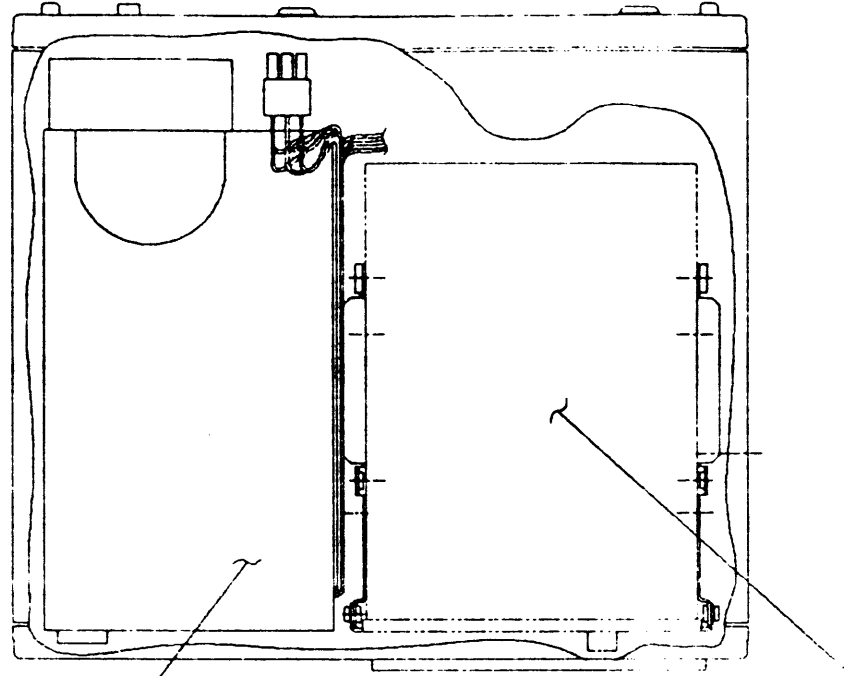


TITLE: TK50Z-F UNIT ASSEMBLY
SHEET 00F 4
SIZE/CODE: B DD
NUMBER: TK50Z-F-DBU
REV.: A

TK50Z-F-DBUA
 1987

LEGEND		
PART NO.	REV	VARIATION
TK50Z-F-A	A1	AS SHOWN, 120V
TK50Z-F-B	A1	AS SHOWN, 240V

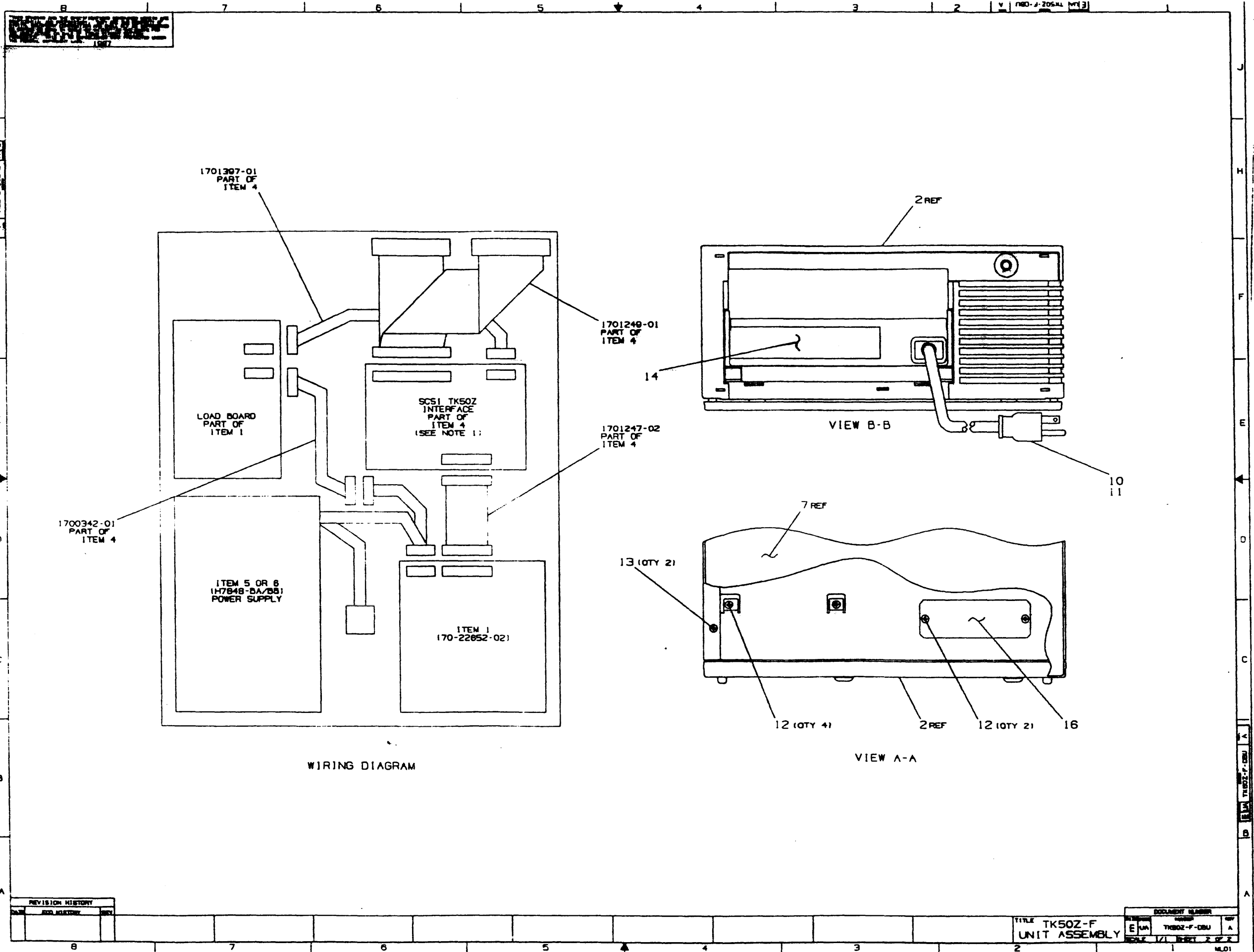
NOTES:
 1. SCSI BOARD (5417839), PART OF ITEM 4, IS TO
 BE INSTALLED WITH COMPONENTS FACING DOWN.



FILE NAME: TK50Z-F-DBUA
 CAUTION: OFF SHEET PARTS LIST EXISTS
 SEE K-PL-TK50Z-F-DBP
 (MLA0758)

INITIAL

DESCRIPTION	QTY	PART NO.
TK50Z-F-DBUA	1	
TK50Z-F-DBP	1	
TK50Z-F-DBQ	1	
TK50Z-F-DBR	1	
TK50Z-F-DBS	1	
TK50Z-F-DBT	1	
TK50Z-F-DBU	1	
TK50Z-F-DBV	1	
TK50Z-F-DBW	1	
TK50Z-F-DBX	1	
TK50Z-F-DBY	1	
TK50Z-F-DBZ	1	
TK50Z-F-DBAA	1	
TK50Z-F-DBAB	1	
TK50Z-F-DBAC	1	
TK50Z-F-DBAD	1	
TK50Z-F-DBAE	1	
TK50Z-F-DBAF	1	
TK50Z-F-DBAG	1	
TK50Z-F-DBAH	1	
TK50Z-F-DBAI	1	
TK50Z-F-DBAJ	1	
TK50Z-F-DBAK	1	
TK50Z-F-DBAL	1	
TK50Z-F-DBAM	1	
TK50Z-F-DBAN	1	
TK50Z-F-DBAO	1	
TK50Z-F-DBAP	1	
TK50Z-F-DBAQ	1	
TK50Z-F-DBAR	1	
TK50Z-F-DBAS	1	
TK50Z-F-DBAT	1	
TK50Z-F-DBAU	1	
TK50Z-F-DBAV	1	
TK50Z-F-DBAW	1	
TK50Z-F-DBAX	1	
TK50Z-F-DBAY	1	
TK50Z-F-DBAZ	1	
TK50Z-F-DBBA	1	
TK50Z-F-DBBB	1	
TK50Z-F-DBBC	1	
TK50Z-F-DBBD	1	
TK50Z-F-DBBE	1	
TK50Z-F-DBBF	1	
TK50Z-F-DBBG	1	
TK50Z-F-DBBH	1	
TK50Z-F-DBBI	1	
TK50Z-F-DBBJ	1	
TK50Z-F-DBBK	1	
TK50Z-F-DBBL	1	
TK50Z-F-DBBM	1	
TK50Z-F-DBBN	1	
TK50Z-F-DBBO	1	
TK50Z-F-DBBP	1	
TK50Z-F-DBBQ	1	
TK50Z-F-DBBR	1	
TK50Z-F-DBBS	1	
TK50Z-F-DBBT	1	
TK50Z-F-DBBU	1	
TK50Z-F-DBBV	1	
TK50Z-F-DBBW	1	
TK50Z-F-DBBX	1	
TK50Z-F-DBBY	1	
TK50Z-F-DBBZ	1	
TK50Z-F-DBCA	1	
TK50Z-F-DBCB	1	
TK50Z-F-DBCC	1	
TK50Z-F-DBCD	1	
TK50Z-F-DBCE	1	
TK50Z-F-DBCF	1	
TK50Z-F-DBCG	1	
TK50Z-F-DBCH	1	
TK50Z-F-DBCI	1	
TK50Z-F-DBCJ	1	
TK50Z-F-DBCK	1	
TK50Z-F-DBCL	1	
TK50Z-F-DBCM	1	
TK50Z-F-DBCN	1	
TK50Z-F-DBCO	1	
TK50Z-F-DBCP	1	
TK50Z-F-DBCQ	1	
TK50Z-F-DBCR	1	
TK50Z-F-DBCS	1	
TK50Z-F-DBCT	1	
TK50Z-F-DBCU	1	
TK50Z-F-DBCV	1	
TK50Z-F-DBCW	1	
TK50Z-F-DBCX	1	
TK50Z-F-DBCY	1	
TK50Z-F-DBCZ	1	
TK50Z-F-DBDA	1	
TK50Z-F-DBDB	1	
TK50Z-F-DBDC	1	
TK50Z-F-DBDD	1	
TK50Z-F-DBDE	1	
TK50Z-F-DBDF	1	
TK50Z-F-DBDG	1	
TK50Z-F-DBDH	1	
TK50Z-F-DBDI	1	
TK50Z-F-DBDJ	1	
TK50Z-F-DBDK	1	
TK50Z-F-DBDL	1	
TK50Z-F-DBDM	1	
TK50Z-F-DBDN	1	
TK50Z-F-DBDO	1	
TK50Z-F-DBDP	1	
TK50Z-F-DBDQ	1	
TK50Z-F-DBDR	1	
TK50Z-F-DBDS	1	
TK50Z-F-DBDT	1	
TK50Z-F-DBDU	1	
TK50Z-F-DBDV	1	
TK50Z-F-DBDW	1	
TK50Z-F-DBDX	1	
TK50Z-F-DBDY	1	
TK50Z-F-DBDZ	1	
TK50Z-F-DBEA	1	
TK50Z-F-DBEB	1	
TK50Z-F-DBEC	1	
TK50Z-F-DBED	1	
TK50Z-F-DBEE	1	
TK50Z-F-DBEF	1	
TK50Z-F-DBEG	1	
TK50Z-F-DBEH	1	
TK50Z-F-DBEI	1	
TK50Z-F-DBEJ	1	
TK50Z-F-DBEK	1	
TK50Z-F-DBEL	1	
TK50Z-F-DBEM	1	
TK50Z-F-DBEN	1	
TK50Z-F-DBEO	1	
TK50Z-F-DBEP	1	
TK50Z-F-DBEQ	1	
TK50Z-F-DBER	1	
TK50Z-F-DBES	1	
TK50Z-F-DBET	1	
TK50Z-F-DBEU	1	
TK50Z-F-DBEV	1	
TK50Z-F-DBEW	1	
TK50Z-F-DBEX	1	
TK50Z-F-DBEY	1	
TK50Z-F-DBEZ	1	
TK50Z-F-DBFA	1	
TK50Z-F-DBFB	1	
TK50Z-F-DBFC	1	
TK50Z-F-DBFD	1	
TK50Z-F-DBFE	1	
TK50Z-F-DBFF	1	
TK50Z-F-DBFG	1	
TK50Z-F-DBFH	1	
TK50Z-F-DBFI	1	
TK50Z-F-DBFJ	1	
TK50Z-F-DBFK	1	
TK50Z-F-DBFL	1	
TK50Z-F-DBFM	1	
TK50Z-F-DBFN	1	
TK50Z-F-DBFO	1	
TK50Z-F-DBFP	1	
TK50Z-F-DBFQ	1	
TK50Z-F-DBFR	1	
TK50Z-F-DBFS	1	
TK50Z-F-DBFT	1	
TK50Z-F-DBFU	1	
TK50Z-F-DBFV	1	
TK50Z-F-DBFW	1	
TK50Z-F-DBFX	1	
TK50Z-F-DBFY	1	
TK50Z-F-DBFZ	1	
TK50Z-F-DBGA	1	
TK50Z-F-DBGB	1	
TK50Z-F-DBGC	1	
TK50Z-F-DBGD	1	
TK50Z-F-DBGE	1	
TK50Z-F-DBGF	1	
TK50Z-F-DBGG	1	
TK50Z-F-DBGH	1	
TK50Z-F-DBGI	1	
TK50Z-F-DBGJ	1	
TK50Z-F-DBGK	1	
TK50Z-F-DBGL	1	
TK50Z-F-DBGM	1	
TK50Z-F-DBGN	1	
TK50Z-F-DBGO	1	
TK50Z-F-DBGP	1	
TK50Z-F-DBGQ	1	
TK50Z-F-DBGR	1	
TK50Z-F-DBGS	1	
TK50Z-F-DBGT	1	
TK50Z-F-DBGU	1	
TK50Z-F-DBGV	1	
TK50Z-F-DBGW	1	
TK50Z-F-DBGX	1	
TK50Z-F-DBGY	1	
TK50Z-F-DBGZ	1	
TK50Z-F-DBGAA	1	
TK50Z-F-DBGAB	1	
TK50Z-F-DBGAC	1	
TK50Z-F-DBGAD	1	
TK50Z-F-DBGAE	1	
TK50Z-F-DBGAF	1	
TK50Z-F-DBGAG	1	
TK50Z-F-DBGAH	1	
TK50Z-F-DBGAI	1	
TK50Z-F-DBGAJ	1	
TK50Z-F-DBGAK	1	
TK50Z-F-DBGAL	1	
TK50Z-F-DBGAM	1	
TK50Z-F-DBGAN	1	
TK50Z-F-DBGAO	1	
TK50Z-F-DBGAP	1	
TK50Z-F-DBGAQ	1	
TK50Z-F-DBGAR	1	
TK50Z-F-DBGAS	1	
TK50Z-F-DBGAT	1	
TK50Z-F-DBGAU	1	
TK50Z-F-DBGAV	1	
TK50Z-F-DBGAW	1	
TK50Z-F-DBGAX	1	
TK50Z-F-DBGAY	1	
TK50Z-F-DBGAZ	1	
TK50Z-F-DBGBA	1	
TK50Z-F-DBGBB	1	
TK50Z-F-DBGBC	1	
TK50Z-F-DBGBD	1	
TK50Z-F-DBGBE	1	
TK50Z-F-DBGBF	1	
TK50Z-F-DBGBG	1	
TK50Z-F-DBGBH	1	
TK50Z-F-DBGBI	1	
TK50Z-F-DBGBJ	1	
TK50Z-F-DBGBK	1	
TK50Z-F-DBGBL	1	
TK50Z-F-DBGBM	1	
TK50Z-F-DBGBN	1	
TK50Z-F-DBGBO	1	
TK50Z-F-DBGBP	1	
TK50Z-F-DBGBQ	1	
TK50Z-F-DBGBR	1	
TK50Z-F-DBGBS	1	
TK50Z-F-DBGBT	1	
TK50Z-F-DBGBU	1	
TK50Z-F-DBGBV	1	
TK50Z-F-DBGBW	1	
TK50Z-F-DBGBX	1	
TK50Z-F-DBGBY	1	
TK50Z-F-DBGBZ	1	
TK50Z-F-DBGCA	1	
TK50Z-F-DBGCB	1	
TK50Z-F-DBGCC	1	
TK50Z-F-DBGCD	1	
TK50Z-F-DBGCE	1	
TK50Z-F-DBGCF	1	
TK50Z-F-DBGCG	1	
TK50Z-F-DBGCH	1	
TK50Z-F-DBGCI	1	
TK50Z-F-DBGCJ	1	
TK50Z-F-DBGCK	1	
TK50Z-F-DBGCL	1	
TK50Z-F-DBGCM	1	
TK50Z-F-DBGCN	1	
TK50Z-F-DBGCO	1	
TK50Z-F-DBGCP	1	
TK50Z-F-DBGCQ	1	
TK50Z-F-DBGCR	1	
TK50Z-F-DBGCS	1	
TK50Z-F-DBGCT	1	
TK50Z-F-DBGCU	1	
TK50Z-F-DBGCV	1	
TK50Z-F-DBGCW	1	
TK50Z-F-DBGCX	1	
TK50Z-F-DBGCY	1	
TK50Z-F-DBGCZ	1	
TK50Z-F-DBGDA	1	
TK50Z-F-DBGDB	1	
TK50Z-F-DBGDC	1	
TK50Z-F-DBGDD	1	
TK50Z-F-DBGDE	1	
TK50Z-F-DBGDF	1	
TK50Z-F-DBGDG	1	
TK50Z-F-DBGDH	1	
TK50Z-F-DBGDI	1	
TK50Z-F-DBGDJ	1	
TK50Z-F-DBGDK	1	
TK50Z-F-DBGDL	1	
TK50Z-F-DBGDM	1	
TK50Z-F-DBGDN	1	
TK50Z-F-DBGDO	1	
TK50Z-F-DBGDP	1	
TK50Z-F-DBGDQ	1	
TK50Z-F-DBGDR	1	
TK50Z-F-DBGDS	1	
TK50Z-F-DBGDT	1	
TK50Z-F-DBGDU	1	
TK50Z-F-DBGDV	1	
TK50Z-F-DBGDW	1	
TK50Z-F-DBGDX	1	
TK50Z-F-DBGDY	1	
TK50Z-F-DBGDZ	1	
TK50Z-F-DBGEA	1	
TK50Z-F-DBGEB	1	
TK50Z-F-DBGEC	1	
TK50Z-F-DBGED	1	
TK50Z-F-DBGEE	1	
TK50Z-F-DBGEF	1	
TK50Z-F-DBGEG	1	
TK50Z-F-DBGEH	1	
TK50Z-F-DBGEI	1	
TK50Z-F-DBGEJ	1	
TK50Z-F-DBGEK	1	
TK50Z-F-DBGEL	1	
TK50Z-F-DBGEM	1	
TK50Z-F-DBGEN	1	
TK50Z-F-DBGEO	1	
TK50Z-F-DBGEP	1	
TK50Z-F-DBGEQ	1	
TK50Z-F-DBGER	1	
TK50Z-F-DBGES	1	
TK50Z-F-DBGET	1	
TK50Z-F-DBGEU	1	
TK50Z-F-DBGEV	1	
TK50Z-F-DBGEW	1	
TK50Z-F-DBGEX	1	
TK50Z-F-DBGEY	1	
TK50Z-F-DBGEZ	1	
TK50Z-F-DBGFA	1	
TK50Z-F-DBGFB	1	
TK50Z-F-DBGFC	1	
TK50Z-F-DBGFD	1	
TK50Z-F-DBGFE	1	
TK50Z-F-DBGFF	1	
TK50Z-F-DBGFG	1	
TK50Z-F-DBGFH	1	
TK50Z-F-DBGFI	1	
TK50Z-F-DBGFJ	1	
TK50Z-F-DBGFK	1	
TK50Z-F-DBGFL	1	
TK50Z-F-DBGFM	1	
TK50Z-F-DBGFN	1	
TK50Z-F-DBGFO	1	
TK50Z-F-DBGFP	1	
TK50Z-F-DBGFQ	1	
TK50Z-F-DBGFR	1	
TK50Z-F-DBGFS	1	
TK50Z-F-DBGFT	1	
TK50Z-F-DBGFU	1	
TK50Z-F-DBGFV	1	
TK50Z-F-DBGFW	1	
TK50Z-F-DBGFX	1	
TK50Z-F-DBGFY	1	
TK50Z-F-DBGFZ	1	
TK50Z-F-DBGGA	1	



REVISION HISTORY		
DATE	BY	REVISION

TITLE TK50Z-F UNIT ASSEMBLY

DOCUMENT NUMBER		
REV	DESCRIPTION	DATE
E	TK50Z-F-DBU	

MLO1

LINE ITEM	TOP DOCUMENT	PART NUMBER	MIN REV	DESCRIPTION	F3 A1	FA A1	QUANTITY PER VARIATION/REVISION
1	D-AD-7022652-0-DBU	70-22652-02		DRIVE ASSY TK50	1	1	
2	E-AD-7022650-0-DBU	70-22650-02		CHASSIS ASSY	1	1	
3	E-AD-7022653-0-DBU	70-22653-01		COVER ASSY	1	1	
4	I-AD-7022654-0-DBU	70-22654-04		SHIELD ASSY	1	1	
5	B-DD-H7848-B-0	H7848-BA		VS400 PWR SUPPLY,120V 104 WATT,+5.	-	1	
6	B-DD-H7848-B-0	H7848-BB		VS400 PWR SUPPLY,240V 104 WATT,+5.	1	-	
7	D-MD-7432769-0-DBU	74-32769-01		COVER, BOTTOM	1	1	
8	B-DD-7433609-0-DBU	74-33609-02		MEDALLION	1	1	
9	SEE NOTE 1	17-01351-02		CABLE ASSY,50 COND,MOLDED,SHIELDED	1	1	
10	A-PS-1700606-0-0	17-00606-02		PWR CORD,TERM SVT 125V	-	1	
11	K-PL-7023990-0-DBF			INTERNATIONAL POWER CORDS	REF	-	
12		90-00049-47		SCREW,SEMS PAN PHIL 6-32	9	9	
13		90-00049-67		SCREW,SEMS PAN BLK/OX 6.32	2	2	
14	SEE NOTE 2	36-26124-01		LABEL,VAXSTAR PRODUCT INFORMATION	REF	REF	
15	A-PA-3700920-0-0	37-00920-02		PKG SYSTEM BOX VS410 CUSTOMER	1	1	
16	C-MD-7433070-0-DBU	74-33070-01		PANEL,COVER	1	1	

- 1 GEN: 1. ITEM #9 (17-01351-02) IS TO BE SHIPPED LOOSE.
- 2 GEN: 2. ITEM #14 (36-26124), USE APPROPRIATE VARIATION FOR VOLTAGE & ORIGIN.

REVISION HISTORY		KPL MATRIX FORMAT		SECTION A OF A	DRN: PAUL GAGNE	DIGITAL			
ENG	ECO NUMBER	REV	SECTION/VARIATION INDEX	DATE: 27-AUG-86	CHK'D: D. HEALY	TITLE PARTS LIST			
	INITIAL	A	[A] F3,FA	DATE: 25-FEB-87		UNIT ASSEMBLY			
			[B]	DES.ENG: L. KIZINA		DOCUMENT NUMBER			
			[C]	DATE: 25-FEB-87		SIZE	CODE	NUMBER	REV
			[D]	RESP.ENG.: G. LORD		K PL TK50Z-F-DBF A			
			[E]	DATE: 25-FEB-87		RELEASE DATE: 25-FEB-87			
			[F]	MFG.ENG: F. OSOWSKI		RELEASE STATUS: RELEASED			
			[G]	DATE: 25-FEB-87					
			[H]						
			[J]						
				BASIC PART NUMBER:	ASSEMBLY NUMBER:	TOP DOCUMENT NUMBER:	FILE NAME:	EDIT #	
				TK50Z	IE-UA-TK50Z-F-DBU	!B-DD-TK50Z-F-DBU	!MLA0758A.PLS	! 16	

"THIS DRAWING AND THE SPECIFICATIONS CONTAINED HEREIN ARE CONFIDENTIAL AND PROPRIETARY. THEY ARE THE PROPERTY OF DIGITAL EQUIPMENT CORPORATION AND SHALL NOT BE REPRODUCED OR COPIED OR USED IN WHOLE OR IN PART AS THE BASIS FOR THE MANUFACTURE OR SALE OF ITEMS WITHOUT WRITTEN PERMISSION. THIS IS AN UNPUBLISHED WORK PROTECTED UNDER THE FEDERAL COPYRIGHT LAWS."

DRAWING NO.	NO. SHTS	PART NO.	DESCRIPTION	REVISIONS
		15417163-01	LOADS BOARD	1A1
		15417163-02	LOADS BOARD	1A1
1D-UA-5417163-0-0	1		UNIT ASSEMBLY	1A
1B-CS-5417163-0-0	1		CIRCUIT SCHEMATICS	1A
1K-PL-5417163-0-00P	1		PARTS LIST	1A
1K-PC-5417163-0-00J			P.C. DATA BASE	1A
1K-CS-5417163-0-00X			SCHEMATIC DATA BASE	1A
		15017162-01	ETCHED CIRCUIT BOARD	1A1
1K-00-5017162-0-0	1		DRAWING DIRECTORY	1A

NOTES:

R
E
V
I
S
I
O
N
S
I
N
O
R
D
E
R
O
F
P
R
I
O
R
I
T
Y

THIS DRAWING AND THE SPECIFICATIONS CONTAINED HEREIN ARE CONFIDENTIAL AND PROPRIETARY. THEY ARE THE PROPERTY OF DIGITAL EQUIPMENT CORPORATION AND SHALL NOT BE REPRODUCED OR COPIED OR USED IN WHOLE OR IN PART AS THE BASIS FOR THE MANUFACTURE OR SALE OF ITEMS WITHOUT WRITTEN PERMISSION. THIS IS AN UNPUBLISHED WORK PROTECTED UNDER THE FEDERAL COPYRIGHT LAWS.

DRW: JIM CUNNINGHAM DATE: 10/1/86

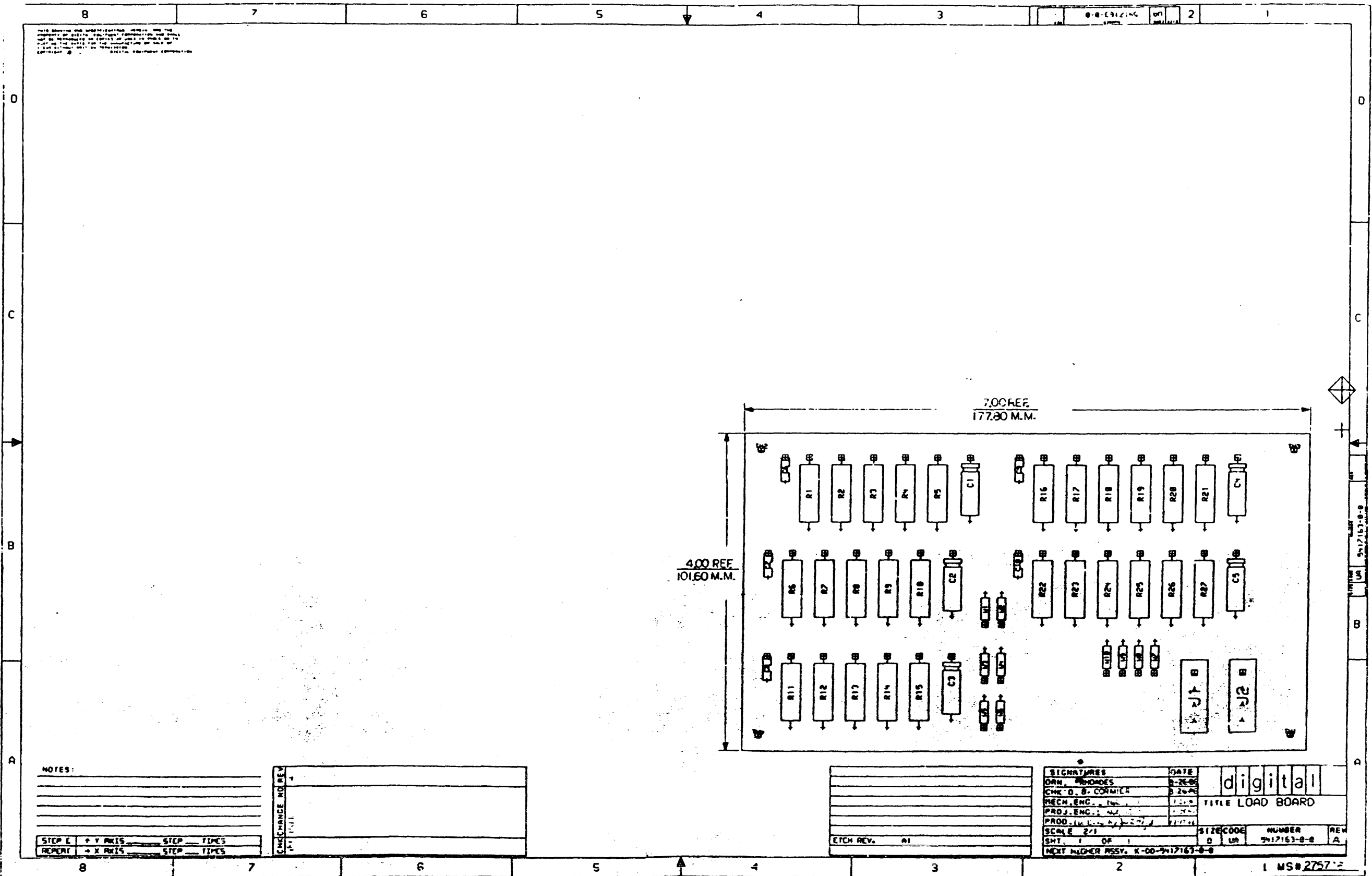
CHK'D: LENNY HAYWOOD DATE: 10/1/86 TITLE: LOADS BOARD

DES. ENG.: LARRY NARHI DATE: 10/1/86 SHEET 1 OF 1 EDIT: 4

RESP. ENG.: LARRY NARHI DATE: 10/1/86 DOCUMENT NUMBER

DD FILENAME: 5417163A.DDF

PRG. ENG.: W. BEAN DATE: 10/1/86 SIZE: CODE: NUMBER: REV: K | DD | 5417163-0-0 | A



8

7

6

5

4

3

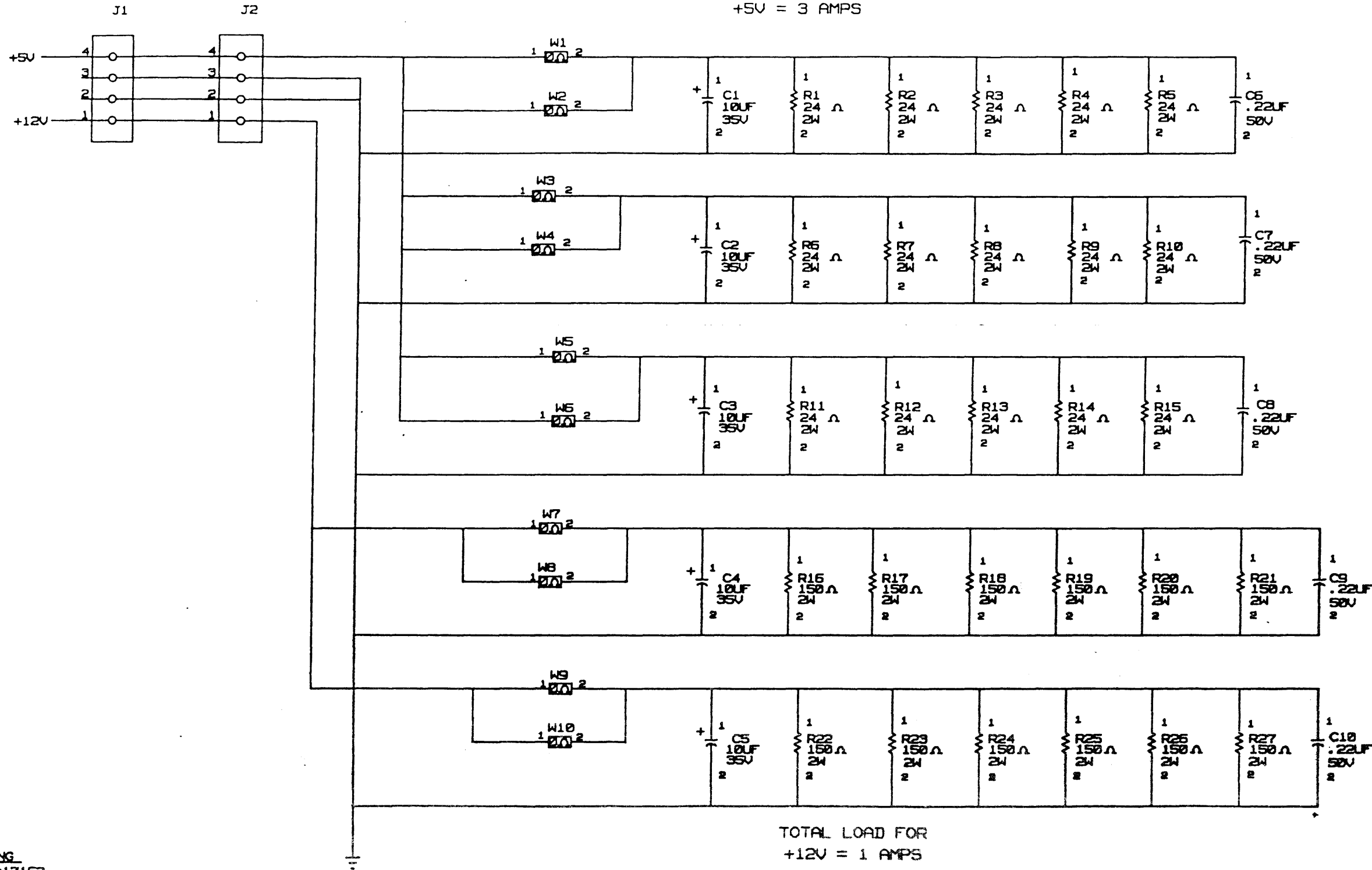
2

K CS 5417163-0-1 A

1

NOTE: FOR 5417163-02 VARIATION REMOVE W1 THRU W6.

TOTAL LOAD FOR
+5V = 3 AMPS



TOTAL LOAD FOR
+12V = 1 AMP

DRAWING
 TITLE=17163
 ABBREV=17163
 LAST MODIFIED=Tue Sep 9 11:36:20 1963

REVISION	DESCRIPTION	NO.	REV.

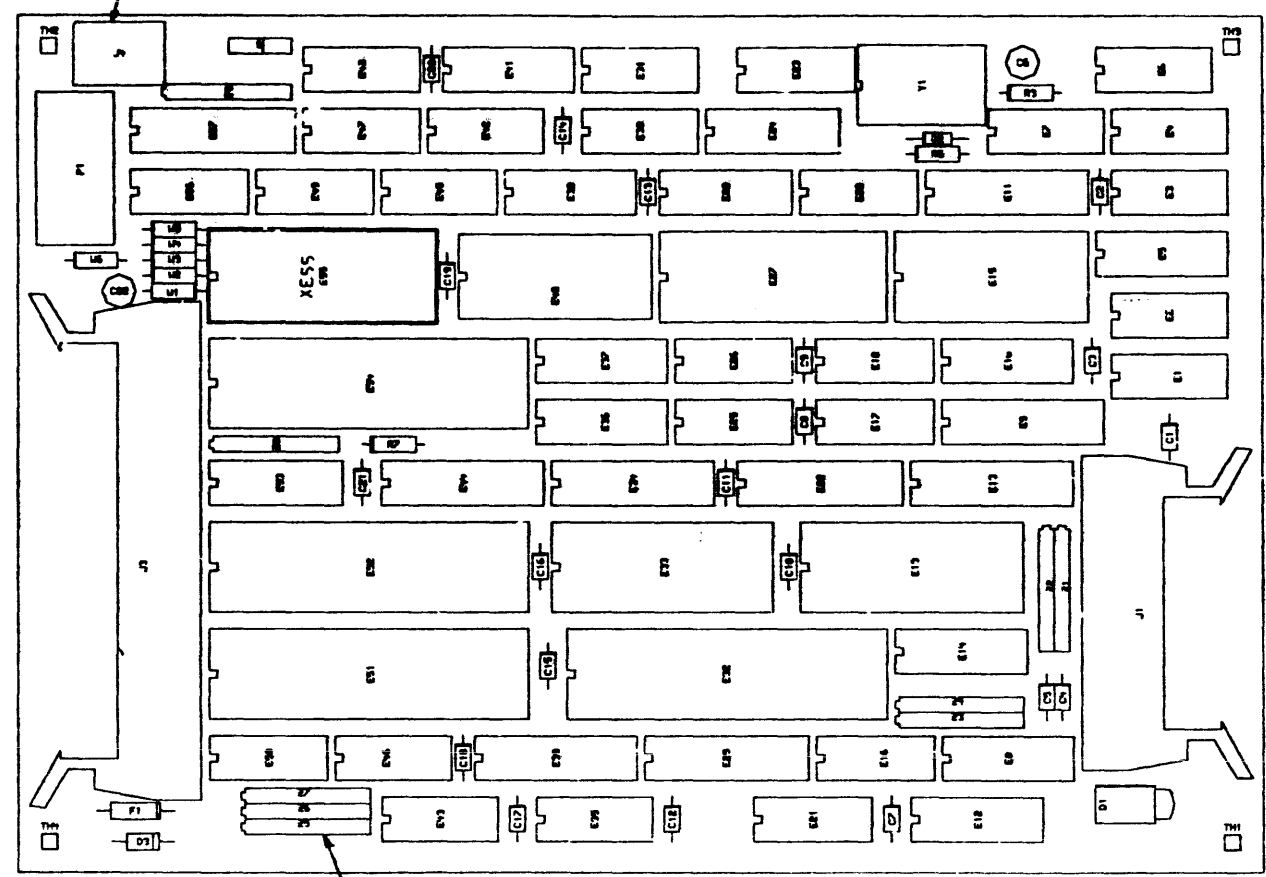
LOADS BOARD

K CS 5417163-0-1 A

8 7 6 5 4 3 2 1



VIEWED FROM SIDE 1
COMPONENT SIDE



XZ8
XZ9
XZ10
XZ11

XZ5
XZ6
XZ7

D
C
B
A

8 7 6 5 4 3 2 1

TITLE
TZK50

SIZE CODE	DOCUMENT NUMBER	REV
D UA	5417639-0-0	A
SCALE 2/1	SHEET 2 OF 2	

1 WO#

8 7 6 5 4 3 2 1

LINE	ITEM	TOP DOCUMENT	PART NUMBER	MIN REV	DESCRIPTION	QTY PER VAR/REV	REFERENCE DESIGNATORS
						01 A1	
1	1	B-DD-5017638-0	50-17638-01		CIRCUIT DRILL & ETCH	1	
2	2		10-13466-43		0.010MFD 50V +/- 5% X7R C	20	C1-C5,C7-C21
3	3		10-23486-03		22 MFD 16V +/-20% ALU	2	C6,C22
4	4		11-05796-00		PIV= 400 IO= 1.00A 1N4004 D0-41	1	D3
5	5		11-09517-00		PIV= 75 IO=150 MA - 4NS 1N914B	1	D2
6	6		11-17373-01		LED ASSY RED	1	D1
7	7		12-10929-02		FUSE PICO 1.0 A 125V AXIAL LEA	1	F1
8	8		12-16832-01		PCB,HEADER 26POS(2X13).100CC 90D	1	J1
9	9		12-16832-03		PCB,HEADER 50POS(2X25).100CC 90D	1	J3
10	10	SEE NOTE # 10	12-10385-01		PCB HEADER PIN	10	
11	11		12-18826-01		*** THIS ITEM IS NOT USED ***	-	
12	12		12-18855-00		PCB,HEADER 04POS(1X04).200CC 90D	1	P1
13	13		13-00202-00		47.0 .25 W 5.0 % CF	1	R7
14	14		13-00229-00		100.0 .25 W 5.0 % CF	1	R6
15	15		13-02395-00		56.0 K .25 W 5.0 % CF	1	R3
16	16		13-16254-01		R. NET 4.7K- 7 2.0	2	Z8,Z9
17	17		13-22716-01		R. NET 120.0 - 7 2.0	1	Z3
18	18		13-25000-01		R. NET 220.0 - 7 2.0	3	Z1,Z2,Z4
19	19		18-11660-21		OSCILLATOR, XTAL 24.000 MHZ	1	Y1
20	20		19-12697-00		LS174 FF-D HEX W/CLEAR	1	E38
21	21		19-12799-00		LS00 NAND-GATE-QUAD 2IN,P	2	E35,E48
22	22		19-12801-00		LS02 NOR-GATE-QUAD 2IN	1	E47
23	23		19-12803-00		LS04 INVERTER GATE,HEX	2	E2,E20
24	24		19-12805-00		LS08 AND GATE-QUAD 2IN,PO	2	E50,E56
25	25		19-12807-00		LS10 NAND GATE-TRIPLE 3IN	1	E46
26	26		19-12811-00		LS21 AND GATE-DUAL 4IN,PO	1	E3
27	27		19-12816-00		LS32 OR GATE-QUAD 2IN,POS	4	E18,E21,E26,E49
28	28		19-12824-00		LS74 FF-D DUAL,EDGE TRIGG	3	E23,E42,E43
29	29		19-12829-00		LS86 X-OR GATE-QUAD 2IN	2	E17,E25
30	30		19-12838-00		LS132 NAND GATE-QUAD 2IN P	1	E7
31	31		19-12842-00		LS138 DECODER-THREE INPUT,	1	E24
32	32		19-12844-00		LS151 MUX 1 OF 8 & DATA	1	E41

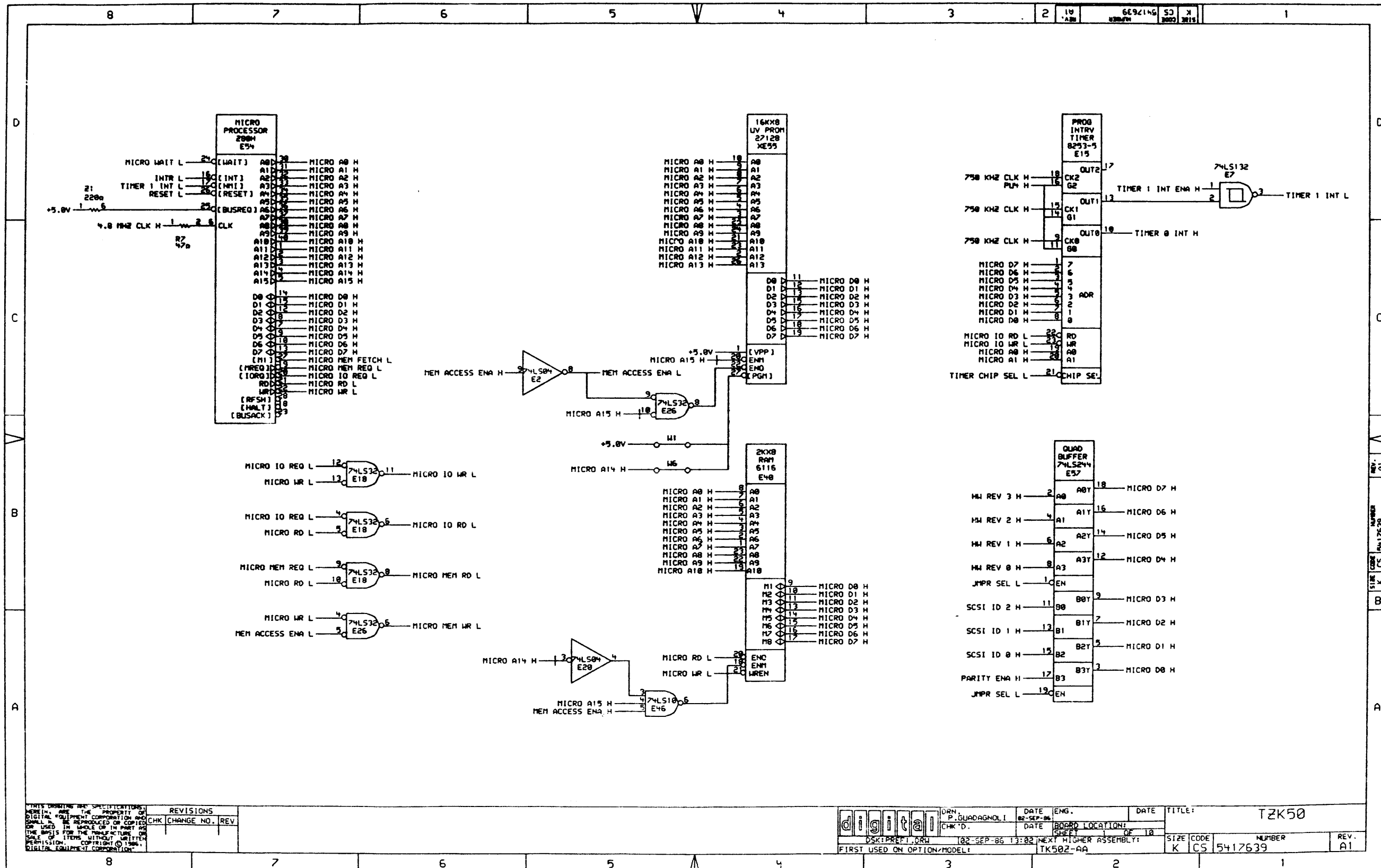
REVISION HISTORY		KPL MODULE FORMAT		SECTION A OF A	DRN: R.KOPPENAL	DIGITAL			
ENG	ECO NUMBER	REV	SECTION/VARIATION INDEX		DATE: 05-AUG-86	TITLE PARTS LIST			
---	INITIAL	A	[A] 01	(M)	CHK'D: R. KOPPENAL	TZK50			
			[B]	(N)	DATE: 07-MAY-86	//////////			
			[C]	(P)	DES.ENG: M. SHEFFIELD	DOCUMENT NUMBER			
			[D]	(Q)	DATE: 07-MAY-86	SIZE	CODE	NUMBER	REV
			[E]	(R)	RESP.ENG.: M. SHEFFIELD	K	PL	5417639-0-D6P	A
			[F]	(S)	DATE: 07-MAY-86	RELEASE DATE: 02-SEP-86			
			[H]	(T)	MFG.ENG: GREG KIAH	RELEASE STATUS: RELEASED			
			[J]	(V)	DATE: 05-AUG-86				
			[K]	(W)					
			[L]	(Y)					
BASIC PART NUMBER:		ASSEMBLY NUMBER:		TOP DOCUMENT NUMBER:		FILE NAME:		EDIT #	
5417639		D-UA-5417639-0-0		B-DD-5417639-0-0		SH292A.PLS		38	

"THIS DRAWING AND THE SPECIFICATIONS CONTAINED HEREIN ARE CONFIDENTIAL AND PROPRIETARY. THEY ARE THE PROPERTY OF DIGITAL EQUIPMENT CORPORATION AND SHALL NOT BE REPRODUCED OR COPIED OR USED IN WHOLE OR IN PART AS THE BASIS FOR THE MANUFACTURE OR SALE OF ITEMS WITHOUT WRITTEN PERMISSION. THIS IS AN UNPUBLISHED WORK PROTECTED UNDER THE FEDERAL COPYRIGHT LAWS."

LINE	ITEM	TOP DOCUMENT	PART NUMBER	MIN REV	DESCRIPTION	QTY PER VAR/REV	REFERENCE DESIGNATORS
						01 A1	
33	33		19-12847-00		LS157 MUX 1 OF 2(QUAD)	1	E12
34	34		19-12849-00		LS161 COUNTER, SYNCHR, 4BIT	1	E5
35	35		19-12850-00		LS164 SHIFT REG. 8BIT SERI	3	E1, E6, E16
36	36		19-12863-00		LS273 FF-D OCTAL W/CLEAR	4	E22, E29, E34, E39
37	37		19-12864-00		LS279 LATCH, QUAD-S-R	1	E10
38	38		19-13471-00		LS367 DRIVER, BUS, HEX, TRI-S	3	E36, E37, E53
39	39		19-14451-00		LS393 COUNTER, BINARY, 4BIT	2	E30, E31
40	40		19-15123-00		26LS32 RECEIVER, QUAD, EIA RS	1	E8
41	41		19-15193-00		LS244 DRIVER, LINE, OCTAL, TR	2	E9, E57
42	42		19-15218-00		LS245 TRANSCEIVER, BUS, OCTA	1	E44
43	43		19-15219-00		LS373 FF-D OCTAL-TRANSPARE	1	E13
44	44		19-15851-00		26LS31 DRIVER, QUAD, EIA RS 4	1	E14
45	45		19-15932-00		LS125 BUFFER, QUAD BUS	1	E4
46	46		19-16079-00		8253-5TIMER, PROGRAMMABLE I	1	E15
47	47		21-17872-01		RAM 2KX8 I/O MUXD 20	1	E40
48	48		21-26956-01		8274 MULTI PROTOCOL SER CO	1	E52
49	49		21-19143-01		Z80H MICROPROCESSOR 40PIN	1	E54
50	50		21-20070-01		CONTROLLER, DMA, HI PE	1	E32
51	51		21-21384-02		RAM 8KX8, STATIC 150	2	E19, E33
52	52		21-23756-01		CONTROLLER, PROGRAMMA	1	E27
53	53		21-24640-01		74HCT04 HEX INVERTER	1	E45
54	54		21-25351-01		INTERFACE CHIP (SCSI	1	E51
55	55		23-A2 -05		256X 4 , TTL, PROM, TRI STA,	1	E28
56	56		23-E5 -02		16KX 8 UV EPROM	1	E55
57	57		23-K5 -03		PAL, OCTAL REGISTERED AND-OR	1	E11
58	58		90-09185-00		JUMPER, WIRE, INSULATED, BLACK B	6	W1-W6
59	59		13-26547-01		R NETWORK 8-220 8-330	3	Z5-Z7
60	60		12-17535-13		SKT, IC 08PIN SIP TIN SOLD	3	XZ5-XZ7
61	61		12-15006-07		SKT, IC 28PIN DIP TIN SOLD	1	XE55
62	62		12-18783-00		JUMPER 02POS(1X02).100CC	5	W7-W11

10 NOTE: USED FOR J4

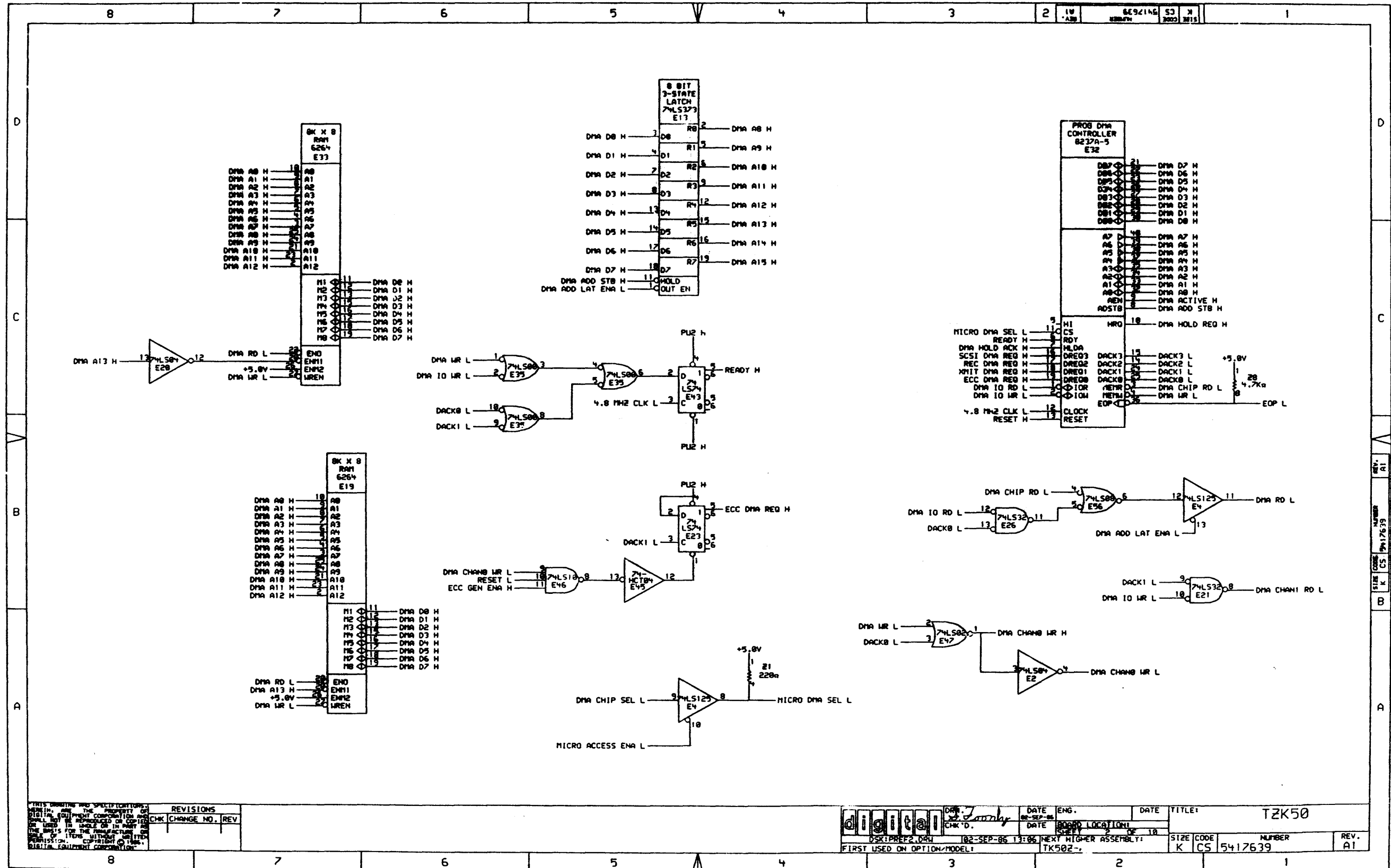
D	I	G	I	T	A	L	TITLE	SECTION A OF A	SIZE	CODE	DOCUMENT NUMBER	REV
							TZK50 //////////		K	PL	5417639-0-DBP	A



THIS DRAWING AND SPECIFICATIONS HEREIN ARE THE PROPERTY OF DIGITAL EQUIPMENT CORPORATION AND SHALL NOT BE REPRODUCED OR COPIED OR USED IN WHOLE OR IN PART AS THE BASIS FOR THE MANUFACTURE OR SALE OF ITEMS WITHOUT WRITTEN PERMISSION. COPYRIGHT © 1984 DIGITAL EQUIPMENT CORPORATION.

REVISIONS	
CHK	CHANGE NO. / REV

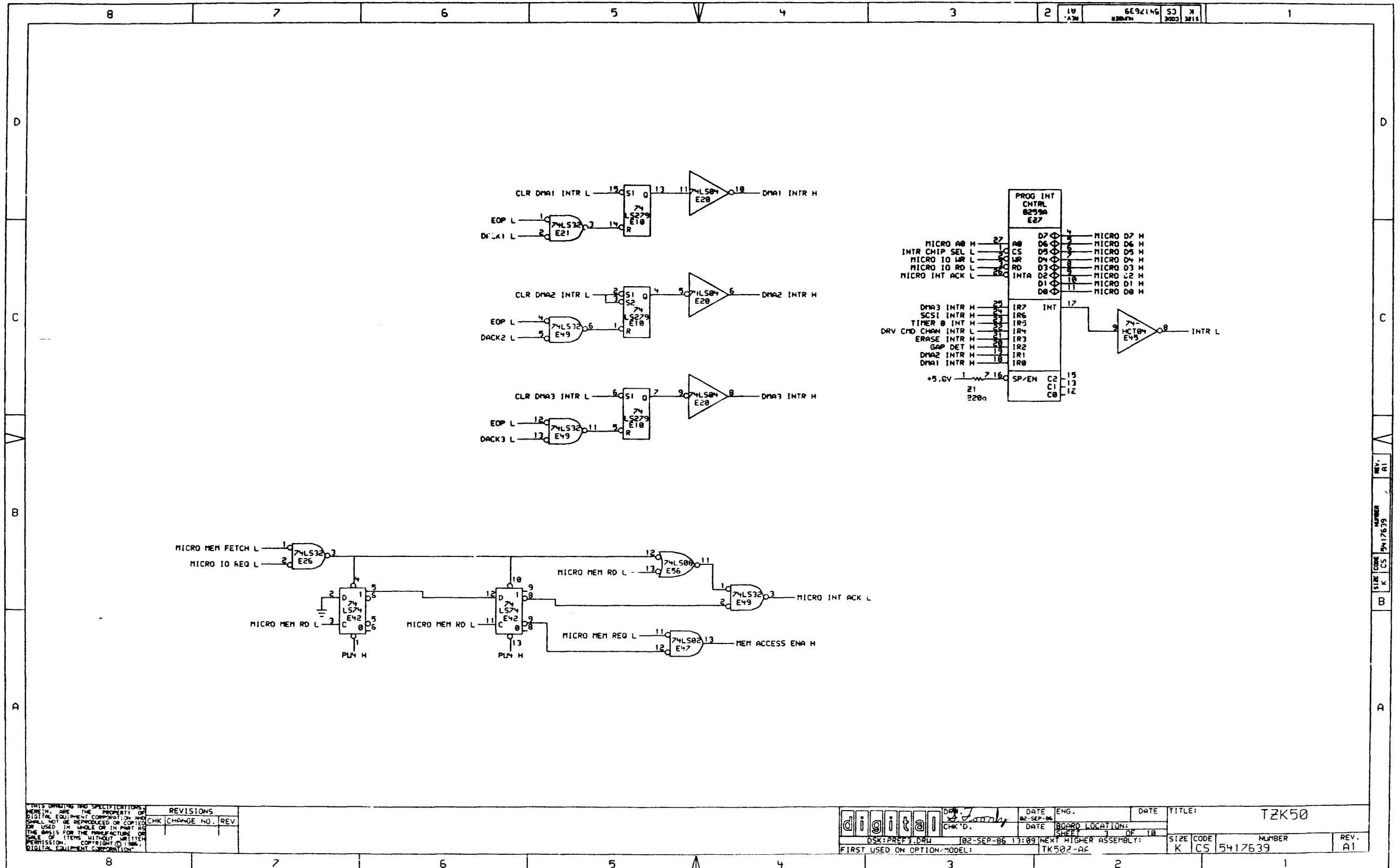
digital	DRN. P. GUADAGNOLI	DATE 02-SEP-86	ENG.	DATE	TITLE: TK50
	CHK'D.	DATE	BOBRO LOCATION:	SHEET 10	
DSK:PREFT.DRW 102-SEP-86 13:02			NEXT HIGHER ASSEMBLY: TK502-AA		SIZE CODE NUMBER REV. K CS 5417639 A1



THIS DRAWING AND SPECIFICATIONS ARE THE PROPERTY OF DIGITAL EQUIPMENT CORPORATION AND SHALL NOT BE REPRODUCED OR COPIED IN WHOLE OR IN PART OR BE USED IN THE MANUFACTURE OF ANY ITEMS WITHOUT WRITTEN PERMISSION OF DIGITAL EQUIPMENT CORPORATION.

REVISIONS	CHK	CHANGE NO.	REV

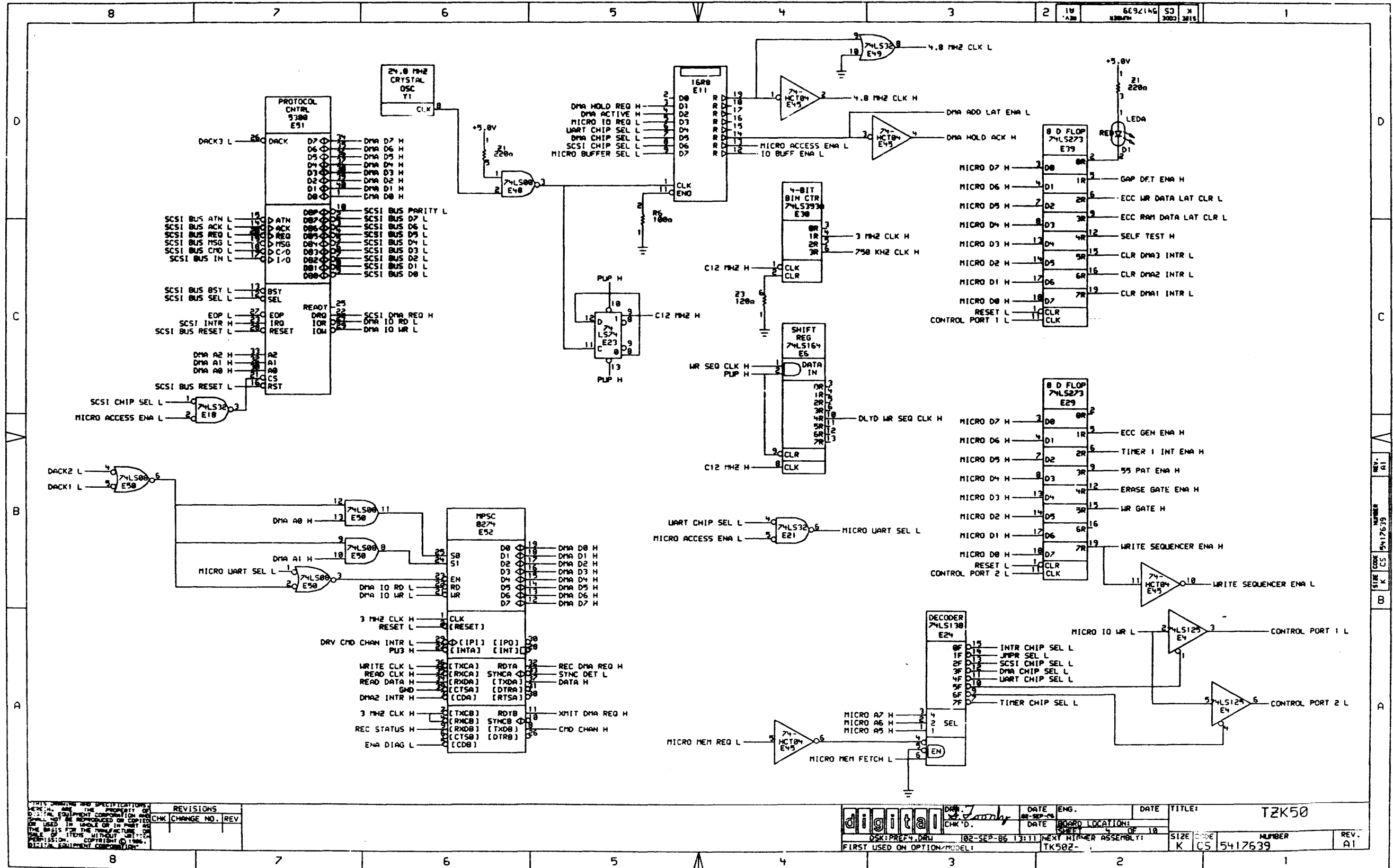
	DATE	ENG.	DATE	TITLE:	TZK50
	102-SEP-86	J. Family	13106	BOARD LOCATION:	
OSK:PREP2.DWG	102-SEP-86	13106	NEXT HIGHER ASSEMBLY:	SIZE	CODE
FIRST USED ON OPTION/MODEL:	TK502			K	CS
				NUMBER	REV.
				5417639	A1



THIS DRAWING AND SPECIFICATIONS HEREIN ARE THE PROPERTY OF DIGITAL EQUIPMENT CORPORATION AND SHALL NOT BE REPRODUCED OR COPIED OR USED IN WHOLE OR IN PART AS THE BASIS FOR THE MANUFACTURE OR SALE OF ITEMS WITHOUT WRITTEN PERMISSION. COPYRIGHT © 1986, DIGITAL EQUIPMENT CORPORATION.

REVISIONS		
CHK	CHANGE NO.	REV

	DATE: 02-SEP-86	ENG.:	DATE:	TITLE: TZK50
	CHK'D:	DATE: 02-SEP-86 13:09	BOARD LOCATION:	SHEET 3 OF 10
FIRST USED ON OPTION/MODEL:	02-SEP-86 13:09	NEXT HIGHER ASSEMBLY:	SIZE CODE: K CS 15417639	NUMBER: TK502-AF
				REV. A1



THIS DRAWING AND SPECIFICATIONS ARE THE PROPERTY OF DIGITAL EQUIPMENT CORPORATION AND SHALL NOT BE REPRODUCED OR COPIED OR USED IN WHOLE OR IN PART AS A BASIS FOR THE MANUFACTURE OR SALE OF ITEMS WITHOUT WRITTEN PERMISSION. COPYRIGHT © 1986, DIGITAL EQUIPMENT CORPORATION.

REVISIONS		
CHK	CHANGE NO.	REV

digital	DATE	ENG.	DATE	TITLE:	T2K50
	CHK'D.			BOARD LOCATION:	
FIRST USED ON OPTION/MODEL:	02-SEP-86 1311	NEXT MANUFACTURE ASSEMBLY:	TK502-	SIZE	CODE
				K	CS
				NUMBER	REV.
				5417639	A1

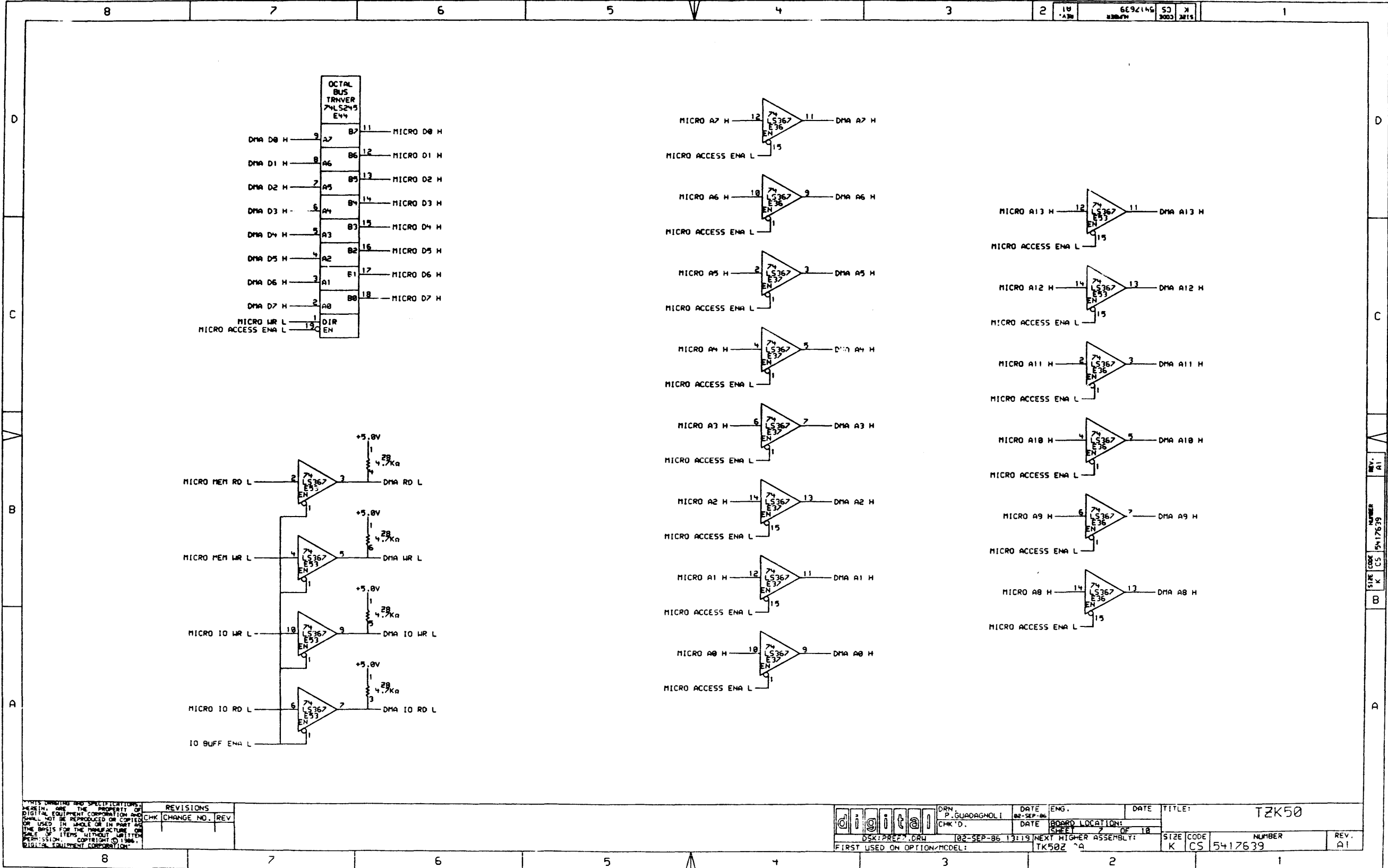


THESE DRAWINGS AND SPECIFICATIONS ARE THE PROPERTY OF DIGITAL EQUIPMENT CORPORATION AND SHALL NOT BE REPRODUCED OR COPIED OR USED IN WHOLE OR IN PART AS THE BASIS FOR THE MANUFACTURE OR SALE OF ITEMS WITHOUT WRITTEN PERMISSION OF DIGITAL EQUIPMENT CORPORATION.

REVISIONS	
CHK	CHANGE NO. REV

digital	DRN P. GUADAGNOLI	DATE 02-SEP-86	ENG.	DATE	TITLE: TZK50
	CHK'D.	DATE	BOARD LOCATION:	SHEET 5 OF 18	
DSK:PREP5.DRW	02-SEP-86 13:12	NEXT HIGHER ASSEMBLY:	SIZE K	CODE CS	NUMBER 5417639
FIRST USED ON OPTION/MODEL:	TK507 2A				REV. A1

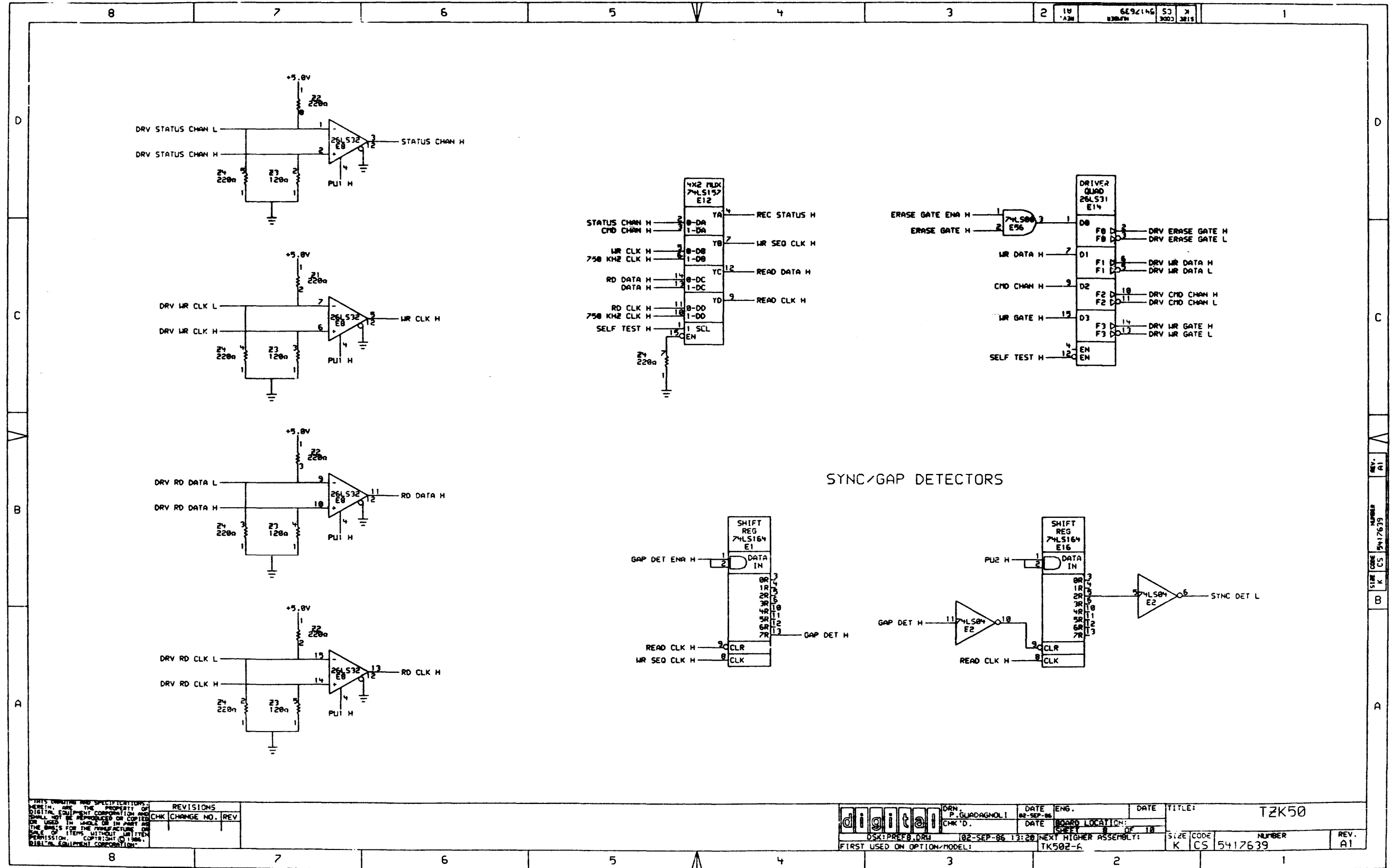
REV. A1
NUMBER 5417639
SIZE CODE CS
K
B
A



THIS DRAWING AND SPECIFICATIONS ARE THE PROPERTY OF DIGITAL EQUIPMENT CORPORATION AND SHALL NOT BE REPRODUCED OR COPIED OR USED IN WHOLE OR IN PART AS THE BASIS FOR THE MANUFACTURE OR SALE OF ITEMS WITHOUT WRITTEN PERMISSION. COPYRIGHT © 1986 DIGITAL EQUIPMENT CORPORATION.

REVISIONS		
CHK	CHANGE NO.	REV

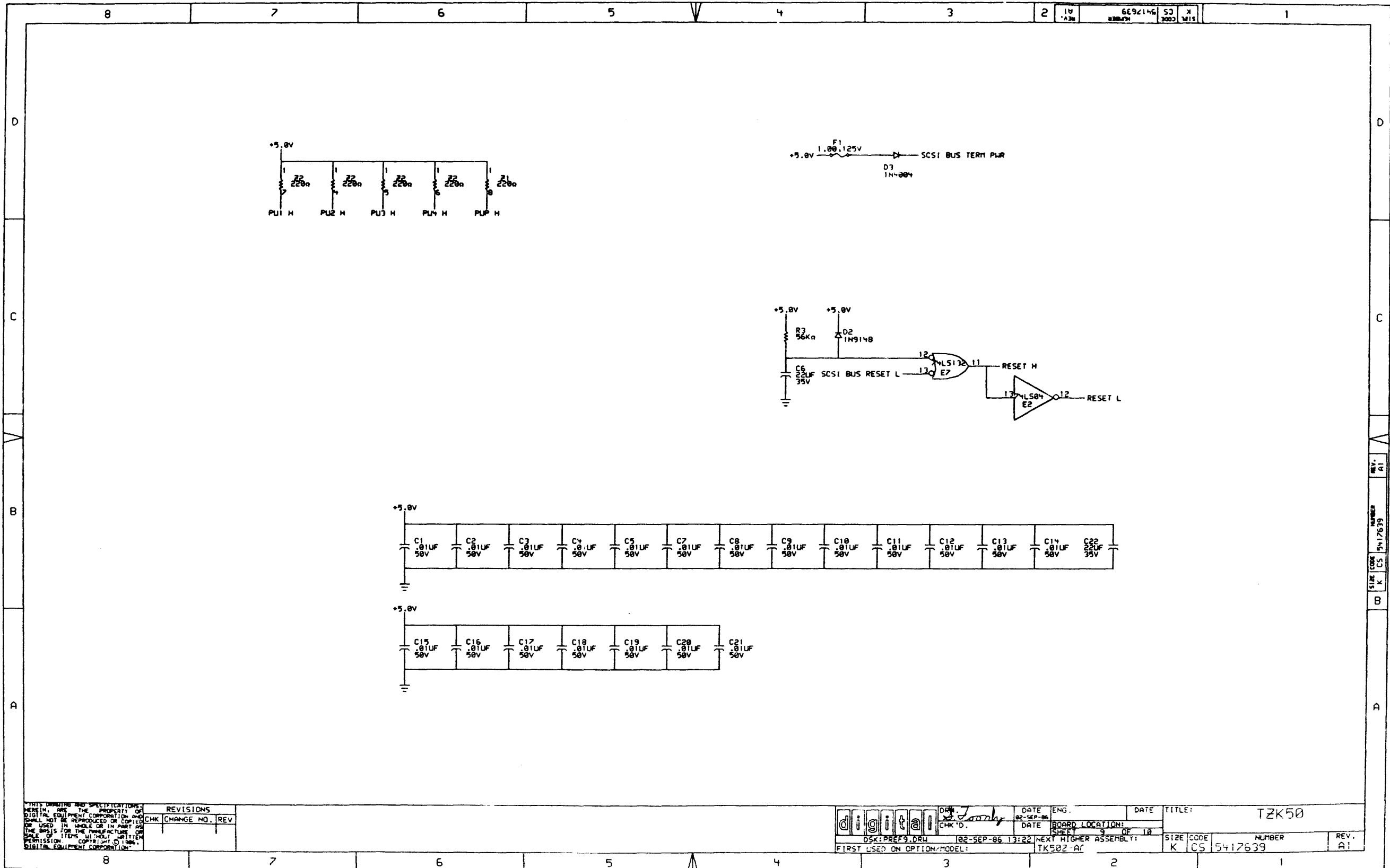
digital	DRN. P. GUARAGNOLI	DATE 02-SEP-86	ENG.	DATE	TITLE: TZK50
	CHK'D.	DATE	BOARD LOCATION:	SHEET 7 OF 18	
DSK:PREZ.DRW		02-SEP-86 13:19	NEXT HIGHER ASSEMBLY: TK50Z 2A		SIZE CODE K CS
FIRST USED ON OPTION/MODEL:			NUMBER 5417639	REV. A1	



THIS DRAWING AND SPECIFICATIONS ARE THE PROPERTY OF DIGITAL EQUIPMENT CORPORATION AND SHALL NOT BE REPRODUCED OR COPIED OR USED IN WHOLE OR IN PART AS THE BASIS FOR THE MANUFACTURE OR SALE OF ITEMS WITHOUT WRITTEN PERMISSION. COPYRIGHT © 1984, DIGITAL EQUIPMENT CORPORATION.

REVISIONS		
CHK	CHANGE NO.	REV

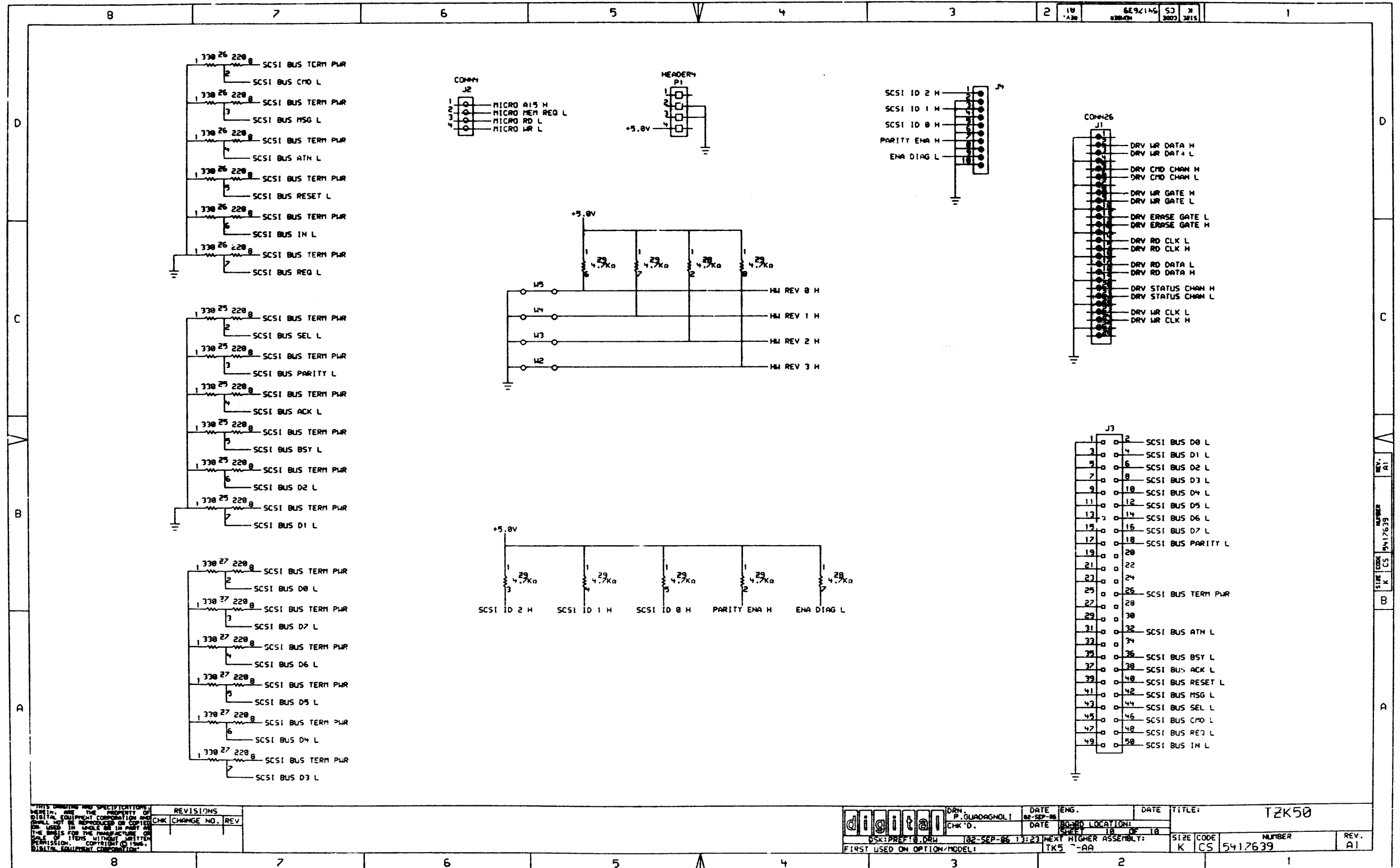
	DRN P. GLADAGNOLI	DATE 02-SEP-86	ENG.	DATE	TITLE: TK50
	CHK'D.	DATE	BOARD LOCATION:	SHEET 8 OF 10	SIZE CODE K CS
FIRST USED ON OPTION/MODEL: 02-SEP-86 13:20			NEXT HIGHER ASSEMBLY: TK502-A		NUMBER 5417639
					REV. A1



THIS DRAWING AND SPECIFICATIONS ARE THE PROPERTY OF DIGITAL EQUIPMENT CORPORATION AND SHALL NOT BE REPRODUCED OR COPIED OR USED IN WHOLE OR IN PART AS THE BASIS FOR THE MANUFACTURE OR SALE OF ITEMS WITHOUT WRITTEN PERMISSION. COPYRIGHT © 1985, DIGITAL EQUIPMENT CORPORATION.

REVISIONS	
CHK	CHANGE NO. REV.

	DATE	ENG.	DATE	TITLE:	TZK50
	02-SEP-86	J. Lashy	02-SEP-86	BOARD LOCATION:	
CHK'D.	DATE		SHEET	3	OF 1A
DSK1:PREP9.DRW	02-SEP-86 13:22	NEXT HIGHER ASSEMBLY:	SIZE	CODE	NUMBER
FIRST USED ON OPTION/MODEL:	TK502 AC		K	CS	5417639
					REV. A1



THIS DRAWING AND SPECIFICATIONS
HEREIN, ARE THE PROPERTY OF
DIGITAL EQUIPMENT CORPORATION AND
SHALL NOT BE REPRODUCED OR COPIED
OR USED IN ANY MANNER OR FOR
ANY PURPOSES WITHOUT WRITTEN
PERMISSION. COPYRIGHT © 1985,
DIGITAL EQUIPMENT CORPORATION.

REVISIONS		
CHK	CHANGE NO.	REV

digital	DRN. P. GUADAGNOLI	DATE 02-SEP-85	ENG.	DATE	TITLE: TZK50
	CHK'D.	DATE	BOARD LOCATION:	SHEET 10 OF 10	
OSK:PREFT0.DRW		02-SEP-85 13:23	NEXT HIGHER ASSEMBLY:		SIZE CODE NUMBER REV.
FIRST USED ON OPTION/MODEL:		TK5	-AR	CS	5417639 A1

LINE ITEM	TOP DOCUMENT	PART NUMBER	MIN REV	DESCRIPTION	QUANTITY PER VARIATION/REVISION								
					01 A1	02 A1	03 A1	04 A1	05 A1	06 A1	07 A1	08 A1	
1	1 A-PS-1700198-0-0	17-00198-07		PWR CORD,TERM 3-18 250V	1	-	-	-	-	-	-	-	-
2	2 A-PS-1700199-0-0	17-00199-12		PWR CORD,TERM 3- .75MM 250V	-	1	-	-	-	-	-	-	-
3	3 A-PS-1700310-0-0	17-00310-05		PWR CORD,TERM 3- .75MM 250V	-	-	1	-	-	-	-	-	-
4	4 A-PS-1700456-0-0	17-00456-08		PWR CORD,TERM 3- .75MM 250V	-	-	-	1	-	-	-	-	-
5	5 A-PS-1700209-0-0	17-00209-08		PWR CORD,TERM 3- .75MM 5A 250V	-	-	-	-	1	-	-	-	-
6	6 A-PS-1700457-0-0	17-00457-08		PWR CORD,TERM 3- .75MM 250V	-	-	-	-	-	1	-	-	-
7	7 K-PL-1700364-0-0	17-00364-08		PWR CORD,TERM 3- .75MM 250V 2	-	-	-	-	-	-	1	-	-
8	8 A-PS-1700210-0-0	17-00210-05		PWR CORD,TERM 3- .75MM 250V 6A 2	-	-	-	-	-	-	-	1	-

- 1 GEN: 1. VARIATION -01 WILL BE USED IN THE FOLLOWING COUNTRIES: AUSTRALIA, NEW ZEALAND
- 2 GEN: 2. VARIATION -02 WILL BE USED IN THE FOLLOWING COUNTRIES: AUSTRIA, BELGIUM, BRAZIL, FINLAND, FRANCE, GERMANY, HOLLAND,
- 3 GEN: 2A. NORWAY, PORTUGAL, SPAIN & SWEDEN
- 4 GEN: 3. VARIATION -03 WILL BE USED IN THE FOLLOWING COUNTRIES: DENMARK
- 5 GEN: 4. VARIATION -04 WILL BE USED IN THE FOLLOWING COUNTRIES: INDIA, SOUTH AFRICA
- 6 GEN: 5. VARIATION -05 WILL BE USED IN THE FOLLOWING COUNTRIES: IRELAND, UNITED KINGDOM
- 7 GEN: 6. VARIATION -06 WILL BE USED IN THE FOLLOWING COUNTRIES: ISRAEL
- 8 GEN: 7. VARIATION -07 WILL BE USED IN THE FOLLOWING COUNTRIES: ITALY
- 9 GEN: 8. VARIATION -08 WILL BE USED IN THE FOLLOWING COUNTRIES: SWITZERLAND
- 10 GEN: 9. OPTION # FOR 1700198-07 = BN19H-2E
- 11 GEN: 10. OPTION # FOR 1700199-12 = BN19C-2E
- 12 GEN: 11. OPTION # FOR 1700310-05 = BN19K-2E
- 13 GEN: 12. OPTION # FOR 1700456-08 = BN19S-2E
- 14 GEN: 13. OPTION # FOR 1700209-08 = BN19A-2E
- 15 GEN: 14. OPTION # FOR 1700457-08 = BN19U-2E
- 16 GEN: 15. OPTION # FOR 1700364-08 = BN19M-2E
- 17 GEN: 16. OPTION # FOR 1700210-05 = BN19E-2E

REVISION HISTORY		KPL MATRIX FORMAT		SECTION A OF A	DRN: PAUL GAGNE	DIGITAL	
ENG!	ECO NUMBER	REV	SECTION/VARIATION INDEX	DATE: 03-JUN-86	CHK'D: D. HEALY	TITLE PARTS LIST	
---	INITIAL	A	[A] 01,02,03,04,05,06,07,08	DATE: 25-FEB-87	DATE: 25-FEB-87	INTERNATIONAL POWER CORDS	
			[B]	DES.ENG: L. KIZINA	DATE: 25-FEB-87	DOCUMENT NUMBER	
			[C]	RESP.ENG.: G. LORD	DATE: 25-FEB-87	SIZE!CODE!	NUMBER
			[D]	DATE: 25-FEB-87	RELEASE DATE: 25-FEB-87	K ! PL !	7023990-0-DBP
			[E]	MFG.ENG: F. OSOWSKI	RELEASE STATUS: RELEASED		
			[F]	DATE: 25-FEB-87			
			[G]				
			[H]				
			[J]				
				BASIC PART NUMBER:	ASSEMBLY NUMBER:	TOP DOCUMENT NUMBER:	FILE NAME:
				7023990		K-PL-7023990-0-DBP	MLA0345A.PLS
							EDIT #
							6

"THIS DRAWING AND THE SPECIFICATIONS CONTAINED HEREIN ARE CONFIDENTIAL AND PROPRIETARY. THEY ARE THE PROPERTY OF DIGITAL EQUIPMENT CORPORATION AND SHALL NOT BE REPRODUCED OR COPIED OR USED IN WHOLE OR IN PART AS THE BASIS FOR THE MANUFACTURE OR SALE OF ITEMS WITHOUT WRITTEN PERMISSION. THIS IS AN UNPUBLISHED WORK PROTECTED UNDER THE FEDERAL COPYRIGHT LAWS."

