

"THE MATERIAL HEREIN IS FOR INFORMATION PURPOSES ONLY AND IS SUBJECT TO CHANGE WITHOUT NOTICE. DIGITAL EQUIPMENT CORPORATION ASSUMES NO RESPONSIBILITY FOR ANY ERRORS WHICH MAY APPEAR HEREIN."

FIELD MAINTENANCE PRINT SET

"THIS DRAWING AND SPECIFICATIONS, HEREIN, ARE THE PROPERTY OF DIGITAL EQUIPMENT CORPORATION AND SHALL NOT BE REPRODUCED OR COPIED OR USED IN WHOLE OR IN PART AS THE BASIS FOR THE MANUFACTURE OR SALE OF ITEMS WITHOUT WRITTEN PERMISSION. COPYRIGHT © 1978 DIGITAL EQUIPMENT CORPORATION."

TABLE OF CONTENTS

B-TC-RL02-AK-1
 E-UA-RL02-AK-0
 MP00553 (COMPLETE)
 E-AD-7013688-0-0

TABLE OF CONTENTS
 DISK DRIVE MOUNTING KIT AND CARTRIDGE
 FIELD MAINTENANCE PRINT SET
 INTERLOCK KIT (MARK III)

UNIT VARIATIONS COVERED BY THIS PRINT SET

RL02-AK
**Field Maintenance
 Print Set**

**Digital Equipment
 Corporation**

PRINT SET ORDER NO.
 MP 00698

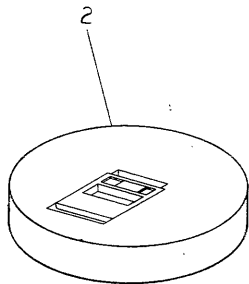
REVISIONS		CHG. NO.	REV	USED ON OPTION/MODEL	DRN.	DATE	TITLE: digital							
DATE	W.L.M. 9 Jun 78	RL02-CZ001 B. MILLER	A	RL02-AK	R. Hobbs	21-SEP-78	CHK'D	DATE	DISK DRIVE MOUNTING KIT AND CARTRIDGE					
	RPM 28 Nov 79	RL02-CX007 K. GUENZEL <i>K. Swenson</i>	B		W. M.	9 May 79			PROJ. ENG.	DATE	SIZE	CODE	NUMBER	REV.
					W. L. Dover	9 MAY 79			FIELD SERV.	DATE	B	TC	RL02-AK-1	B
					<i>Claymore</i>	15 MAY 79					DIST.			
SHEET 1 OF 1														

REV. 1
 NUMBER 1
 SIZE 1
 CODE 1

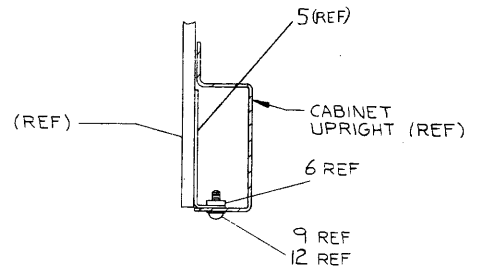
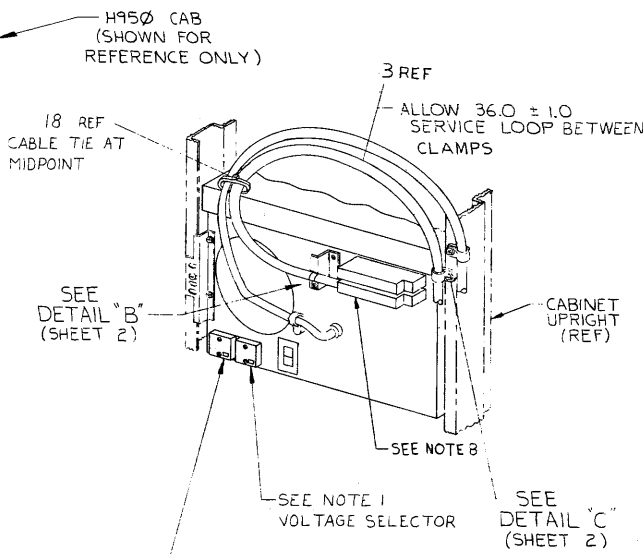
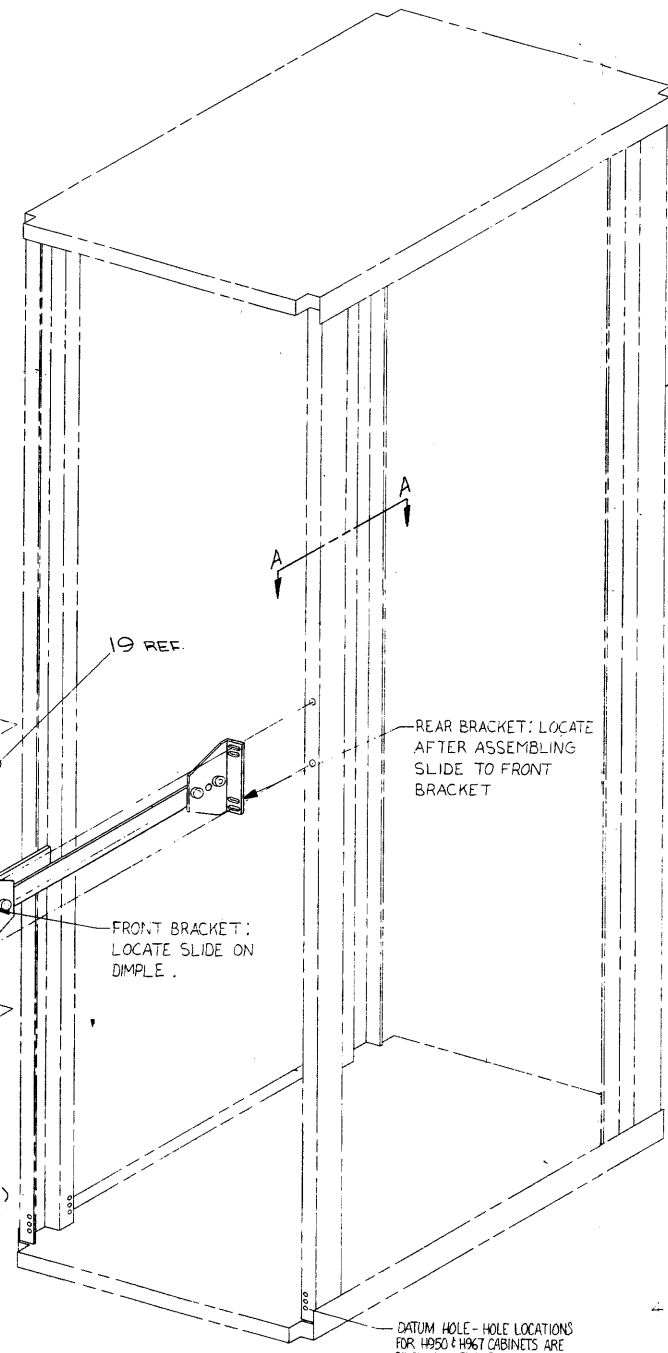
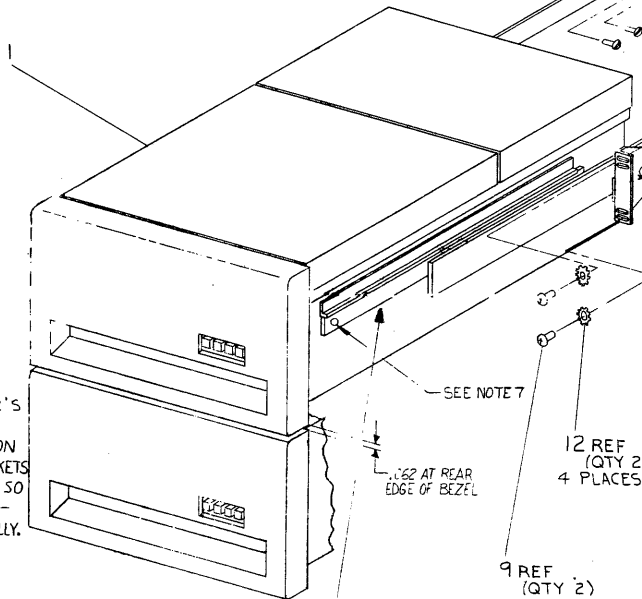
H950 AND H967 CABINETS

AVAILABLE SPACE BENEATH RLØ2	MOUNTING HOLES (FROM DATUM HOLE)	
	LOWER	UPPER
5.25	12	15
10.50	21	24
15.75	30	33
21.00	39	42
26.25	48	51
31.50	57	60

J
H
F
E
C
B
A



WHEN TWO RLØ2'S ARE MOUNTED IN A CABINET THE POSITION OF THE SLIDE BRACKETS MUST BE ADJUSTED SO THAT THE BEZELS ARE PARALLEL AND ALIGNED VERTICALLY.



7. CONT
D. SECURE DRIVE TO SLIDES USING SCREWS SUPPLIED. (SEE DETAIL "F", SHEET 4)
TO REMOVE DRIVE, EXTEND SLIDES FULLY, REMOVE SCREWS, RELEASE LATCHES AND LIFT OFF.
8. FOR THE LAST DRIVE IN A SYSTEM, I/O CABLE PLUGS INTO EITHER SOCKET. TERMINATOR (SUPPLIED WITH CONTROLLER) PLUGS INTO THE OTHER.
NOTES CONT. ON SH. 2

- NOTES:
1. MACHINES ARE SHIPPED CONFIGURED FOR 110 V. AND NOMINAL VOLTAGE RANGE. FOR 220 V OPERATION REMOVE TWO SCREWS FROM "VOLTAGE SELECTOR" COVER WITHDRAW THE COVER, AND REINSERT TURNED UPSIDE DOWN. AFTER INSERTION, 220 MUST BE SHOWING THRU THE SMALL WINDOW. REPLACE THE TWO SCREWS, CUT OFF 110V PLUG ON THE POWER CORD, REPLACE BY 220 V PLUG (ITEM #20). FOR COLOR CODE SEE DETAIL "G", SHEET 4.
2. "LOW LINE" AND "NOMINAL LINE" ARE DEFINED ON COVER OF "VOLTAGE RANGE SELECTOR" FOR LOW LINE VOLTAGE OPERATION REMOVE TWO SCREWS FROM "VOLTAGE RANGE SELECTOR" COVER, WITHDRAW THE COVER AND RE-INSERT IT TURNED UPSIDE DOWN. AFTER INSERTION, "LOW" MUST BE SHOWING THRU THE SMALL WINDOW. REPLACE THE TWO SCREWS.
3. WHEN AN RLØ2-AK IS ORDERED IN CONJUNCTION WITH H9500, H9501, H9502, H9503, H9600, H9601, H9602, H9603 INTER-LOCK KIT(S) (REF 21) OR CABLE RESTRAINT SYSTEM(S) (REF 22) MUST BE ORDERED AND INSTALLED.
4. WHEN AN RLØ2-AK IS ORDERED IN CONJUNCTION WITH A H95Ø3/H96Ø3 THE TRIM PIECES (H9514-B) MUST BE ORDERED.
5. WHEN AN RLØ2-AK IS ORDERED IN CONJUNCTION WITH A H95Ø1/H96Ø1 TRIM PIECES (H9514-A) MUST BE ORDERED.
6. TO ATTACH SHIPPING BRACKET (ITEM 7) REMOVE TWO SCREWS AND TWO LOCKWASHERS FROM ONE SIDE OF THE POWER PANEL ON THE REAR OF DISK DRIVE (ITEM 1), POSITION A SHIPPING BRACKET TO DETERMINE LOCATION OF "U" NUT (ITEM 13) AND ATTACH BRACKET USING ORIGINAL SCREWS AND LOCKWASHERS AND ITEMS 12 AND 9 (AS SHOWN IN DETAIL "D") BRACKET MAY BE ATTACHED TO EITHER SIDE OF UNIT.
7. TO MOUNT RLØ2 IN CABINET:
A. MOUNT BRACKETS AND SLIDES TO UPRIGHTS.
B. EXTEND SLIDES AS FAR AS POSSIBLE BY RELEASING CATCHES. (SEE DETAIL "F" SHT 4)
C. PLACE DRIVE ON SLIDES AND PUSH BACK UNTIL ENDS OF RAILS FIT UNDER TAB ON SLIDES AND LATCHES ENGAGE

SEE DETAIL "F" (SHEET 4)

RLØ2-AK (SHOWN IN A H95Ø CAB)

SECTION A-A (SHOWING TYPICAL MOUNTING OF CHASSIS SLIDES TO CABINET UPRIGHTS) SCALE: NONE

CAUTION: OFF SHEET PARTS LIST EXISTS. SEE K-PL-RLØ2-AK-DBP (Z0848).

REV	CHANGE NO.	DESCRIPTION	DATE	BY	CHKD.
1		RELEASE TO ECO			
2		CONTR. POC			
3		REVISION			
4		REVISION			
5		REVISION			
6		REVISION			
7		REVISION			
8		REVISION			

DESCRIPTION	DWG. PART NO.	ITEM NO.
UNLESS OTHERWISE SPECIFIED DIMENSIONS ARE IN INCHES		
ANGLES	CLASS OF ACCURACY	NOMINAL DIMENSION RANGE INCHES
10° 30'	0	0.000 - 0.000
	1	0.000 - 0.000
	2	0.000 - 0.000
	3	0.000 - 0.000
	4	0.000 - 0.000
	5	0.000 - 0.000
	6	0.000 - 0.000
	7	0.000 - 0.000
	8	0.000 - 0.000
	9	0.000 - 0.000
	10	0.000 - 0.000
	11	0.000 - 0.000
	12	0.000 - 0.000
	13	0.000 - 0.000
	14	0.000 - 0.000
	15	0.000 - 0.000
	16	0.000 - 0.000
	17	0.000 - 0.000
	18	0.000 - 0.000
	19	0.000 - 0.000
	20	0.000 - 0.000
	21	0.000 - 0.000
	22	0.000 - 0.000
	23	0.000 - 0.000
	24	0.000 - 0.000
	25	0.000 - 0.000
	26	0.000 - 0.000
	27	0.000 - 0.000
	28	0.000 - 0.000
	29	0.000 - 0.000
	30	0.000 - 0.000
	31	0.000 - 0.000
	32	0.000 - 0.000
	33	0.000 - 0.000
	34	0.000 - 0.000
	35	0.000 - 0.000
	36	0.000 - 0.000
	37	0.000 - 0.000
	38	0.000 - 0.000
	39	0.000 - 0.000
	40	0.000 - 0.000
	41	0.000 - 0.000
	42	0.000 - 0.000
	43	0.000 - 0.000
	44	0.000 - 0.000
	45	0.000 - 0.000
	46	0.000 - 0.000
	47	0.000 - 0.000
	48	0.000 - 0.000
	49	0.000 - 0.000
	50	0.000 - 0.000
	51	0.000 - 0.000
	52	0.000 - 0.000
	53	0.000 - 0.000
	54	0.000 - 0.000
	55	0.000 - 0.000
	56	0.000 - 0.000
	57	0.000 - 0.000
	58	0.000 - 0.000
	59	0.000 - 0.000
	60	0.000 - 0.000
	61	0.000 - 0.000
	62	0.000 - 0.000
	63	0.000 - 0.000
	64	0.000 - 0.000
	65	0.000 - 0.000
	66	0.000 - 0.000
	67	0.000 - 0.000
	68	0.000 - 0.000
	69	0.000 - 0.000
	70	0.000 - 0.000
	71	0.000 - 0.000
	72	0.000 - 0.000
	73	0.000 - 0.000
	74	0.000 - 0.000
	75	0.000 - 0.000
	76	0.000 - 0.000
	77	0.000 - 0.000
	78	0.000 - 0.000
	79	0.000 - 0.000
	80	0.000 - 0.000
	81	0.000 - 0.000
	82	0.000 - 0.000
	83	0.000 - 0.000
	84	0.000 - 0.000
	85	0.000 - 0.000
	86	0.000 - 0.000
	87	0.000 - 0.000
	88	0.000 - 0.000
	89	0.000 - 0.000
	90	0.000 - 0.000
	91	0.000 - 0.000
	92	0.000 - 0.000
	93	0.000 - 0.000
	94	0.000 - 0.000
	95	0.000 - 0.000
	96	0.000 - 0.000
	97	0.000 - 0.000
	98	0.000 - 0.000
	99	0.000 - 0.000
	100	0.000 - 0.000

RLØ2-AK-Ø

A

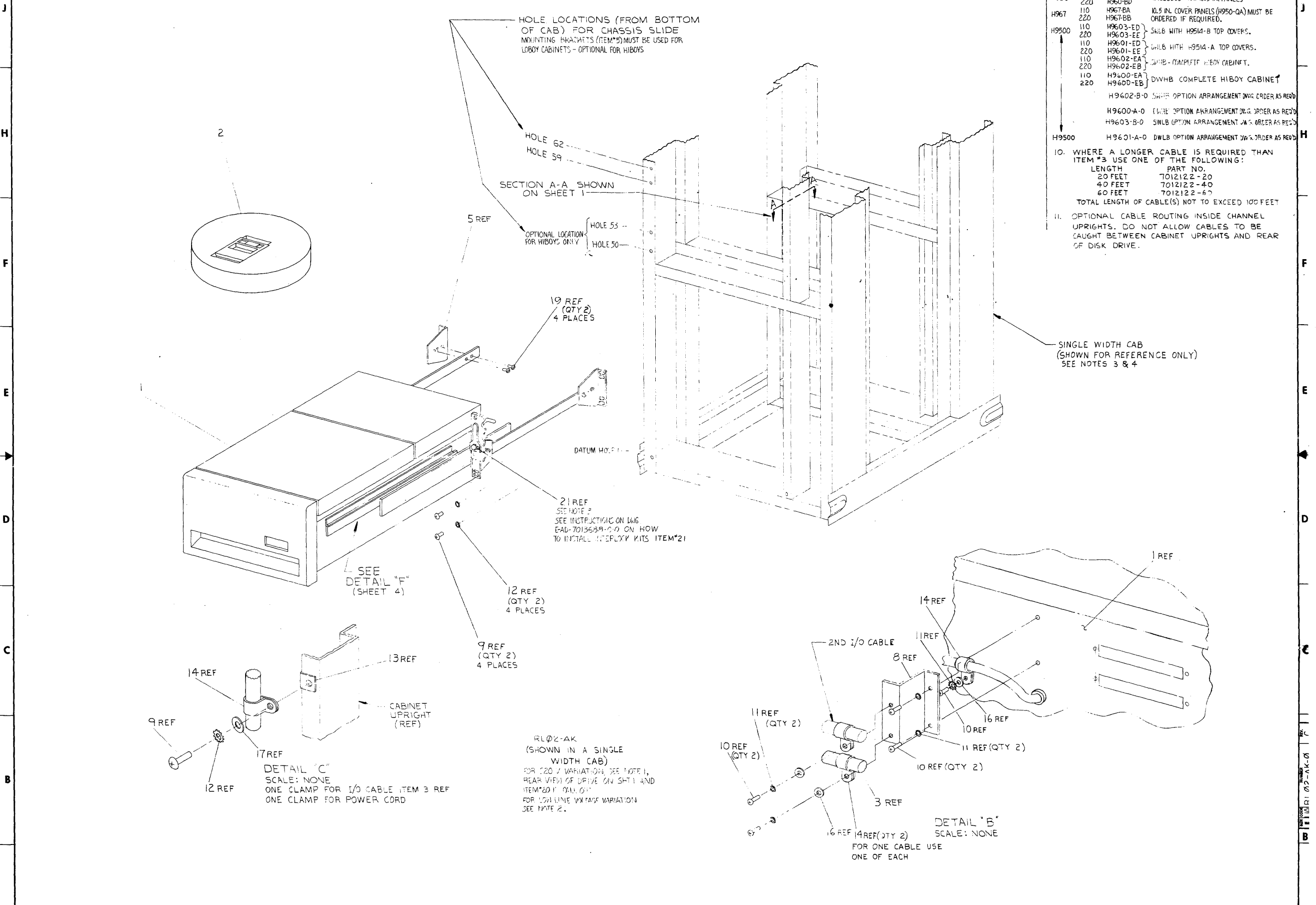
C

THIS DRAWING AND SPECIFICATIONS, HEREIN ARE THE PROPERTY OF DIGITAL EQUIPMENT CORPORATION AND SHALL NOT BE REPRODUCED OR COPIED OR USED IN WHOLE OR IN PART AS THE BASIS FOR THE MANUFACTURE OR SALE OF ITEMS WITHOUT WRITTEN PERMISSION. COPYRIGHT © 1975, DIGITAL EQUIPMENT CORPORATION.

NOTES: (CONT.)

9. CABINET OPTIONS INCLUDE SKINS, DOORS, COVERS, TRIM, & PWR CONTROLLERS.

TYPE	VOLTAGE	DWG	REMARKS
H950	110	H960-BC	INCLUDES FIVE 10.5 IN. PANELS
	220	H960-BD	
H967	110	H967-BA	10.5 IN. COVER PANELS (H950-0A) MUST BE ORDERED IF REQUIRED.
	220	H967-BB	
H9500	110	H9603-ED	SWLB WITH H9514-B TOP COVERS.
	220	H9603-EE	
	110	H9601-ED	SWLB WITH H9514-A TOP COVERS.
	220	H9601-EE	
	110	H9602-EA	SWLB - COMPLETE HIROY CABINET.
	220	H9602-EB	
	110	H9600-EA	DWVHB COMPLETE HIROY CABINET
	220	H9600-EB	
		H9602-B-0	SWLB OPTION ARRANGEMENT DWG. ORDER AS REQ'D
		H9600-A-0	DWVHB OPTION ARRANGEMENT DWG. ORDER AS REQ'D
		H9603-B-0	SWLB OPTION ARRANGEMENT DWG. ORDER AS REQ'D
H9500		H9601-A-0	DWVHB OPTION ARRANGEMENT DWG. ORDER AS REQ'D



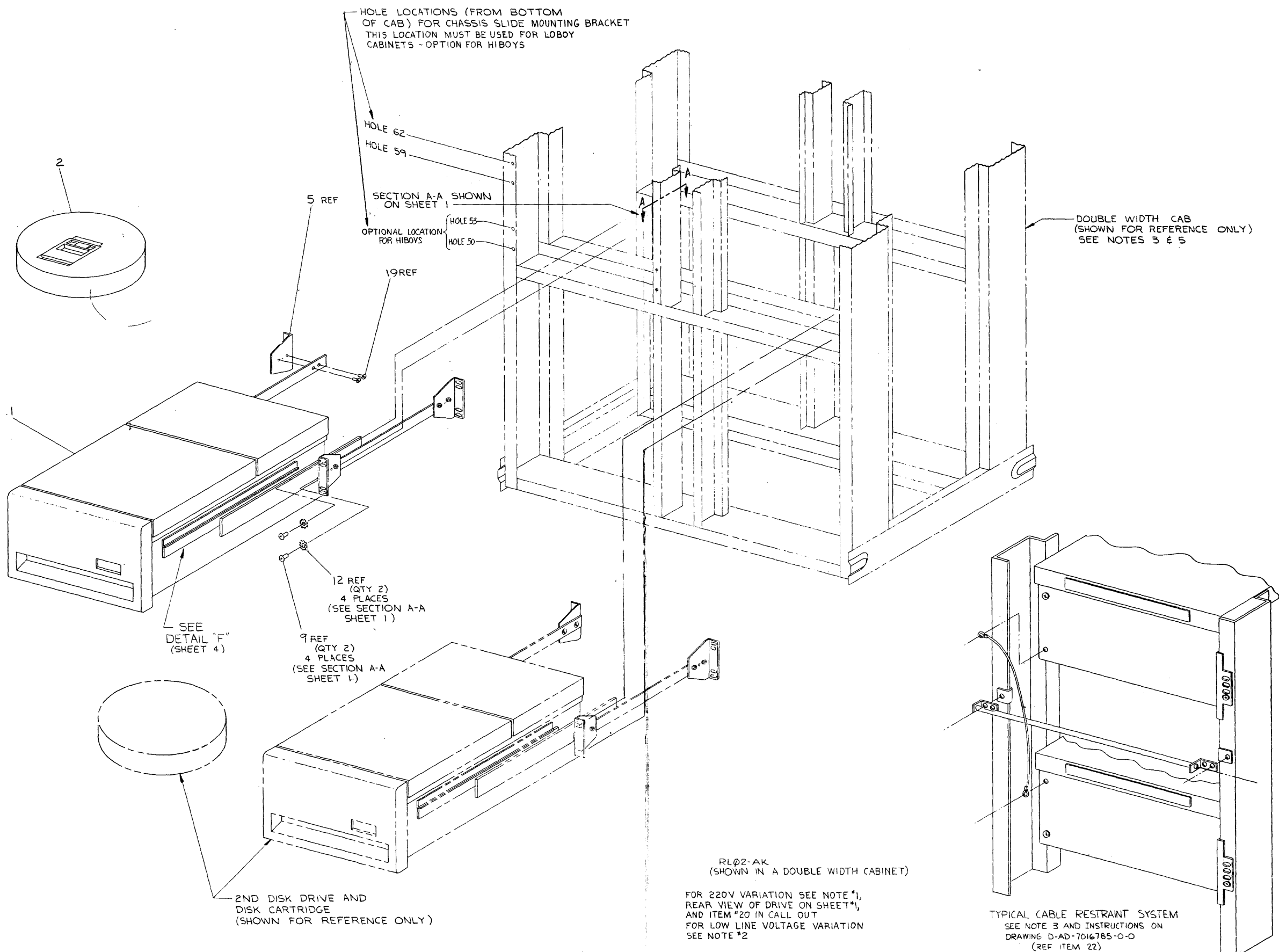
10. WHERE A LONGER CABLE IS REQUIRED THAN ITEM #3 USE ONE OF THE FOLLOWING:

LENGTH	PART NO.
20 FEET	7012122-20
40 FEET	7012122-40
60 FEET	7012122-60

TOTAL LENGTH OF CABLE(S) NOT TO EXCEED 100 FEET

11. OPTIONAL CABLE ROUTING INSIDE CHANNEL UPRIGHTS. DO NOT ALLOW CABLES TO BE CAUGHT BETWEEN CABINET UPRIGHTS AND REAR OF DISK DRIVE.

THIS DRAWING AND SPECIFICATIONS, HEREIN, ARE THE PROPERTY OF DIGITAL EQUIPMENT CORPORATION AND SHALL NOT BE REPRODUCED OR COPIED IN WHOLE OR IN PART WITHOUT THE WRITTEN PERMISSION OF DIGITAL EQUIPMENT CORPORATION. COPYRIGHT © 1978.



REVISIONS		
CHK	CHANGE NO.	REV.

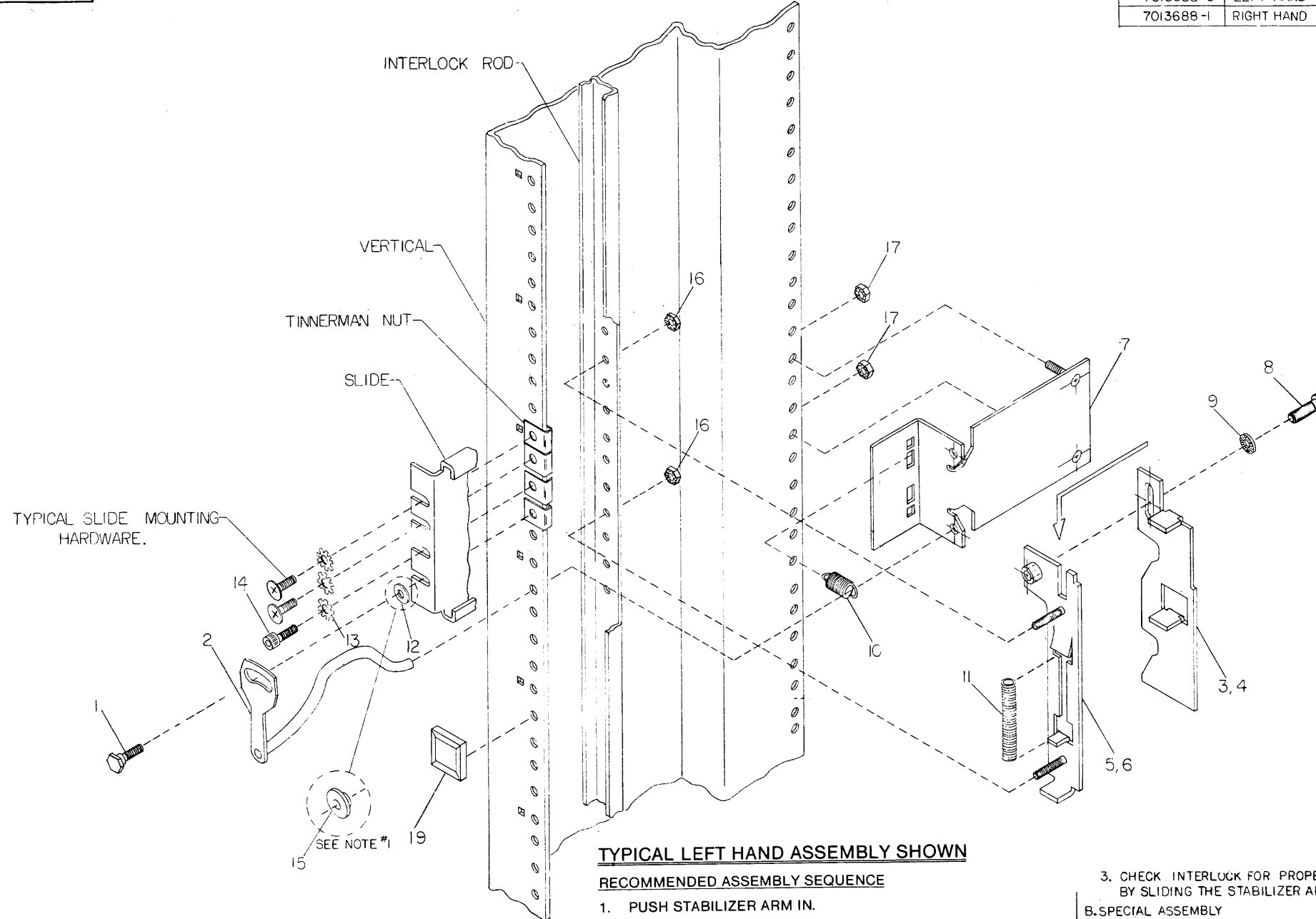
TITLE	DISK DRIVE MTG KIT & CARTRIDGE	SIZE/CODE	EUA	NUMBER	RL02-AK-0	REV.	C
SCALE	NONE	SHEET	3 OF 4	DIST.			

8	7	6	5	4	3	2	1
---	---	---	---	---	---	---	---

THIS DRAWING AND ALL DIMENSIONS HEREIN ARE THE PROPERTY OF DIGITAL EQUIPMENT CORPORATION AND SHALL NOT BE REPRODUCED OR COPIED OR USED IN WHOLE OR IN PART AS THE BASIS FOR THE MANUFACTURE OR SALE OF ITEMS WITHOUT WRITTEN PERMISSION OF DIGITAL EQUIPMENT CORPORATION. COPYRIGHT © 1975, DIGITAL EQUIPMENT CORPORATION.

LEGEND	
PART NO.	VARIATION
7013688-0	LEFT HAND
7013688-1	RIGHT HAND

- NOTE:**
- USE ITEM #15 (SHOULDER, WASHER) IN PLACE OF ITEM #12 (FLAT WASHER) WHEN ITEM #1 (RETAINER INTERLOCK) IS NOT MOUNTED THROUGH A SLIDE MOUNTING HOLE.
 - ASSEMBLE ITEM #9 (SPRING, WASHER) WITH CONVEX SIDE TOWARD ITEM #3, 4 (PLATE, CAM).
 - CABINET EQUIPMENT MOUNTING HOLES ARE NUMBERED CONSECUTIVELY FROM THE BOTTOM UP. A SQUARE HOLE IS PROVIDED EVERY FIFTH MOUNTING HOLE TO AID IN COUNTING. WITH STABILIZER ARM PUSHED IN, THE INTERLOCK ROD HOLE PATTERN LINES UP WITH THE VERTICAL MOUNTING HOLES AND IS NUMBERED THE SAME.
 - ITEM #14 MUST ALWAYS BE USED ADJACENT TO ITEM #1.
 - WHEN INSTALLING CABINET TRIM STRIPS, MAKE SURE THEY DON'T INTERFERE WITH INTERLOCK OPERATION.



- INSTRUCTIONS**
- THE SYSTEM DOCUMENTATION WILL SPECIFY THE INTERLOCK LOCATION AND ASSEMBLY BY LETTER AND NUMBER CODE.
 - THE FIRST LETTER OF THE CODE SPECIFIES THE DIRECTION IN WHICH THE CHURCH KEY ASSEMBLY MUST BE INSTALLED. "U" SPECIFIES UP (AS SHOWN ON PRINT) AND "D" SPECIFIES DOWN.
 - B. THE SECOND LETTER (IF ANY) SPECIFIES WHICH OF THE TWO CAM PLATE NOTCHES ENGAGES WITH THE CHURCHKEY ASSEMBLY. IF NO LETTER APPEARS, WE CALL THIS THE NORMAL ASSEMBLY POSITION AND USE THE LOWER NOTCH. IF THE LETTER "S" APPEARS, WE CALL THIS THE SPECIAL ASSEMBLY POSITION AND USE THE UPPER NOTCH.
 - C. THE NUMBER AT THE END OF THE INSTALLATION CODE SPECIFIES THE CABINET MOUNTING HOLE FOR THE ITEM #1 (INTERLOCK RETAINER). ALL OTHER PARTS OF THE ASSEMBLY ARE REFERENCED FROM THIS HOLE USING THE CHART BELOW.

DIRECTION / NOTCH SPECIFICATION	BACK PLATE: LOCATION OF TOP MOUNTING STUD.	OUTRIGGER: LOCATION OF TOP MOUNTING STUD.
U	X + 4	X
US	X	X
D	X + 6	X + 3
DS	X + 2	X + 3

NOTE: "X" IS THE SPECIFIED INTERLOCK RETAINER LOCATION.

TYPICAL LEFT HAND ASSEMBLY SHOWN

RECOMMENDED ASSEMBLY SEQUENCE

- PUSH STABILIZER ARM IN.
- ASSEMBLE ITEM #5, 6 AND 11 ONTO INTERLOCK ROD USING ITEMS #16.
- ASSEMBLE ITEM #3, 4 ONTO ITEM #5, 6 USING ITEMS #8 AND #9. TIGHTEN ITEM #8 ONLY AFTER DEPRESSING ITEM #3, 4 AGAINST SPRING AS FAR AS POSSIBLE.
- HOOK ITEM #10 INTO ITEM #7. USE UPPER SLOT FOR "U" ASSEMBLIES AND LOWER SLOT FOR "D" ASSEMBLIES. INSTALL ITEM #7 ONTO CABINET VERTICAL USING ITEMS #17, TORQUE TO 100±30 INCH POUNDS.
- INSTALL ITEM #2 REMEMBERING TO PASS THROUGH ITEM #10 BEFORE ENGAGING ITEM #7.
 - A. NORMAL ASSEMBLY
 - MOUNT SLIDE USING ITEMS #1, #12, #13, #14 AND TYPICAL SLIDE MOUNTING HARDWARE.
 - ADJUST INTERLOCK BY LOOSENING ITEM #8, ALLOWING ITEM #3, 4 TO ASSUME ITS PROPER POSITION AND RETIGHTEN ITEM #8 TO 70±30 INCH-POUNDS.
 - B. SPECIAL ASSEMBLY
 - INSTALL ITEM #1 AND #15 WITHOUT SLIDE.
 - ADJUST INTERLOCK BY LOOSENING ITEM #8 ALLOWING ITEM #3, 4 TO ASSUME ITS PROPER POSITION AND RETIGHTEN ITEM #8 TO 70±30 INCH-POUNDS.
 - REMOVE ITEM #1, #15.
 - MOUNT SLIDE USING ITEMS #1, #12, #13, #14 AND TYPICAL SLIDE MOUNTING HARDWARE.
 - CHECK INTERLOCK FOR PROPER OPERATION BY SLIDING THE STABILIZER ARM IN AND OUT.
- AT THIS POINT IN THE ASSEMBLY, PROCEDURES FOR NORMAL ASSEMBLY AND SPECIAL ASSEMBLY DIFFER.
 - A. NORMAL ASSEMBLY
 - MOUNT SLIDE USING ITEMS #1, #12, #13, #14 AND TYPICAL SLIDE MOUNTING HARDWARE.
 - ADJUST INTERLOCK BY LOOSENING ITEM #8, ALLOWING ITEM #3, 4 TO ASSUME ITS PROPER POSITION AND RETIGHTEN ITEM #8 TO 70±30 INCH-POUNDS.
 - B. SPECIAL ASSEMBLY
 - INSTALL ITEM #1 AND #15 WITHOUT SLIDE.
 - ADJUST INTERLOCK BY LOOSENING ITEM #8 ALLOWING ITEM #3, 4 TO ASSUME ITS PROPER POSITION AND RETIGHTEN ITEM #8 TO 70±30 INCH-POUNDS.
 - REMOVE ITEM #1, #15.
 - MOUNT SLIDE USING ITEMS #1, #12, #13, #14 AND TYPICAL SLIDE MOUNTING HARDWARE.
 - CHECK INTERLOCK FOR PROPER OPERATION BY SLIDING THE STABILIZER ARM IN AND OUT.

- CHECK INTERLOCK FOR PROPER OPERATION BY SLIDING THE STABILIZER ARM IN AND OUT.
- BOTH SPECIAL AND NORMAL ASSEMBLIES — INSTALL ITEMS #19, ONE ON EACH VERTICAL MOUNTING RAIL (BOTH SIDES OF EQUIPMENT), IN THE PLACES WHERE THE REARMOST PART OF THE BEZEL WOULD NORMALLY STRIKE. ITEMS #19 MUST NOT INTERFERE WITH ITEM #2 (ASSEMBLY, CHURCHKEY) OR TRIM STRIPS.

CAUTION: OFF PRINT PARTS LIST
A-PL-7013688-0-0

DESCRIPTION		QUANTITY	PART NO.	ITEM NO.
UNLESS OTHERWISE SPECIFIED DIMENSIONS ARE IN INCHES				
ANGLES	CLASS OF ACCURACY	0.001	0.002	0.005
SURFACE QUALITY	CHECK ONE	0.001	0.002	0.005
QUANTITY & VARIATION	MICROINCHES	PREFERRED	0.001	0.002
THIRD ANGLE PROJECTION	DRN. R. OLSON	2-12-75	PL-7013688-0-0	INTERLOCK KIT (MARK III)
REMOVE BURRS AND BREAK SHARP CORNERS	CHK'D BY	2-16-75		
DO NOT SCALE DIMS	ENCL. NO.	216-75		
MATERIAL	SEE PARTS LIST			
FINISH	NO. 1			

REV.	DESCRIPTION
1	ISSUED