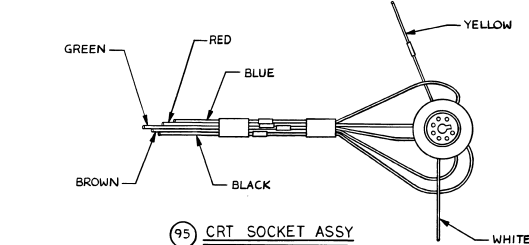
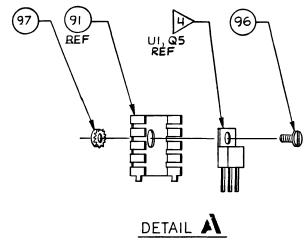
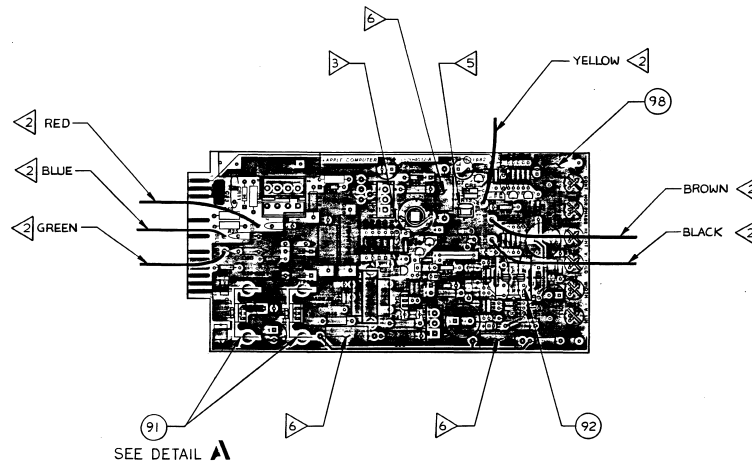


**NOTE: UNLESS OTHERWISE SPECIFIED**

1. THE ASSY REV LEVEL MUST CORRESPOND WITH THE BILL OF MATERIAL REV LEVEL. MANUFACTURING MUST STAMP THE LATEST REV LEVEL IN THE APPROPRIATE LOCATION ON THE PCB AFTER ASSEMBLY OR REWORK.
2. INDICATED COLORED WIRES ARE THE SAME AS THOSE SHOWN ON CRT SOCKET ASSEMBLY (ITEM 95)
3. DOT TO MATCH DOT ON "L2"
4. U1 AND Q5 BACK SURFACE TO BE COATED WITH HEATSINK COMPOUND BEFORE FASTENING TO HEAT SINK (ITEM 91).
5. L1 TO BE MOUNTED UPRIGHT (PERPENDICULAR TO PCB SURFACE) WITH INDUCTOR PACKAGE EXTENDED OVER L1 SILKSCREEN AREA.
6. R14, R24 & R39 MUST BE MOUNTED 0.100" MIN ABOVE PCB SURFACE.
7. L3 ADJUSTMENT HOLE TO BE FREE OF SOLDER.
8. NO COMPONENT TO BE STUFFED AT LOCATIONS: L3, CR6 THRU CR8, C21, C22, R38, R42 & R43.

REV	ZONE	ECO #	REVISION	APPRO
A		B085	INITIAL RELEASE	
B	4D	B098	ADDED NOTES 5, 6 & 7	
C		B156	BOM CHANGE ONLY.	
D		B176	BOM CHANGE ONLY	
E		B203	BOM CHANGE ONLY.	
F		B230	REPLACED R55 WITH CR12; R24 WAS 150 Ω.	
H	4C	B356	DELETED NOTE 7 ADDED NOTE 8; ITEM 6 VALUE WAS 0.03 μF U1 & L2 VALUE CHANGE. DELETED L3 (ITEM 23)	
J	4C	B400	DELETED CR6-8 & CR12; C21 AND C22; R38, R42 AND R43. ADDED R18, R38 & R55. TDA170N WAS TDA170.	



**PRODUCTION RELEASE**  
This assembly is released for production use.  
It is the property of Apple Computer, Inc.  
The information contained herein is the  
confidential property of Apple Computer, Inc.  
It is to be used only for the purposes  
indicated by the release and is not to be  
distributed outside of Apple Computer, Inc.

REFERENCE DOCUMENTATION:  
SCHEMATIC 050 - 4012  
BILL OF MATERIAL 620 - 0121.

ITEM	QTY	PART NUMBER	DESCRIPTION																					
<table border="0"> <tr> <td>TOLERANCES UNLESS OTHERWISE SPECIFIED DIMENSIONS ARE IN INCHES</td> <td>DRAWN BY R. ALLEN</td> <td>DATE 4/24/82</td> <td rowspan="4"> </td> </tr> <tr> <td>DECIMALS .X ±</td> <td>CHECKED BY T. Smith</td> <td>DATE 4/8/82</td> </tr> <tr> <td>FRACTIONS XXX ±</td> <td>APPROVED BY C. L. Baker</td> <td>DATE 4/8/82</td> </tr> <tr> <td>ANGLES XXX ±</td> <td>RELEASED BY P. O'Connell</td> <td>DATE 5/1/82</td> </tr> <tr> <td colspan="2">MATERIAL: N/A</td> <td>SIZE: D</td> <td>DRAWING NUMBER: 620-0121-J</td> </tr> <tr> <td colspan="2">NEXT ASSY FINISH: N/A</td> <td>SCALE: FULL</td> <td>SHEET 1 OF 1</td> </tr> </table>				TOLERANCES UNLESS OTHERWISE SPECIFIED DIMENSIONS ARE IN INCHES	DRAWN BY R. ALLEN	DATE 4/24/82		DECIMALS .X ±	CHECKED BY T. Smith	DATE 4/8/82	FRACTIONS XXX ±	APPROVED BY C. L. Baker	DATE 4/8/82	ANGLES XXX ±	RELEASED BY P. O'Connell	DATE 5/1/82	MATERIAL: N/A		SIZE: D	DRAWING NUMBER: 620-0121-J	NEXT ASSY FINISH: N/A		SCALE: FULL	SHEET 1 OF 1
TOLERANCES UNLESS OTHERWISE SPECIFIED DIMENSIONS ARE IN INCHES	DRAWN BY R. ALLEN	DATE 4/24/82																						
DECIMALS .X ±	CHECKED BY T. Smith	DATE 4/8/82																						
FRACTIONS XXX ±	APPROVED BY C. L. Baker	DATE 4/8/82																						
ANGLES XXX ±	RELEASED BY P. O'Connell	DATE 5/1/82																						
MATERIAL: N/A		SIZE: D	DRAWING NUMBER: 620-0121-J																					
NEXT ASSY FINISH: N/A		SCALE: FULL	SHEET 1 OF 1																					

1-1210-039