

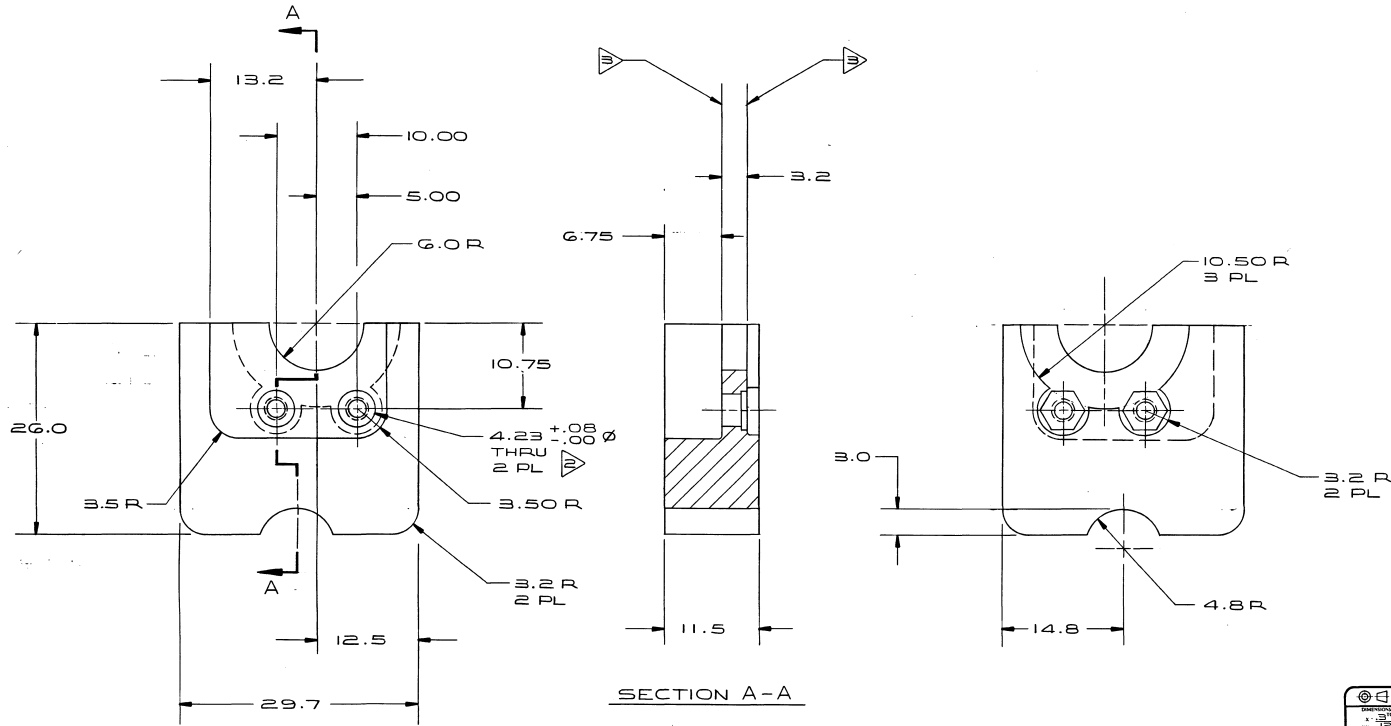
NOTE: UNLESS OTHERWISE SPECIFIED

- ▷ MATL: LEAD BASE DIE CASTING ALLOY NO. 7, 17% ANTIMONY, 83% LEAD.
  - ▷ DRILL HOLE TO INDICATED SIZE. INSTALL PEM SELF-CLINCHING FLUSH STANDOFF NO. S05-440-4 (4-40 THD). ORIENTATE AS SHOWN.
  - ▷ PEM FASTENERS ARE NOT TO PROTRUDE BEYOND INDICATED SURFACES.
4. UNSPECIFIED RADIUS TO BE .20R MAX.

5. COUNTER-WEIGHTS TO BE FREE OF BURRS AND LOOSE OR FOREIGN PARTICLES AND PACKAGED TO PREVENT CONTAMINATION.

- ▷ FINISH: ZINC PLATE PER QQ-Z-325, TYPE 2, CLASS 2.

REV	ZONE	ECO #	REVISION	APPD
A		PG19	INITIAL RELEASE (SK-W095-08)	AK



METRIC			
NOTICE OF PROPRIETARY PROPERTY THE INFORMATION CONTAINED HEREIN IS THE PROPRIETARY PROPERTY OF APPLE COMPUTER, INC. THE POSSESSOR AGREES TO MAINTAIN THIS DOCUMENT IN CONFIDENCE AND NOT TO REPRODUCE OR COPY IT OR NOT TO REVEAL OR PUBLISH IT IN WHOLE OR PART			
DESIGNED BY CHECKED BY DRAWN BY DATE	PART NO. REV. NO. QUANTITY SCALE	TITLE COUNTERWEIGHT, ARM, WIDGET	DATE DRAWING NUMBER '85-5032-A
ANDERSON 1/24 ALM ANDERSON	100 1 4X		1/1

V-2505-518