

Catalog IDC-1

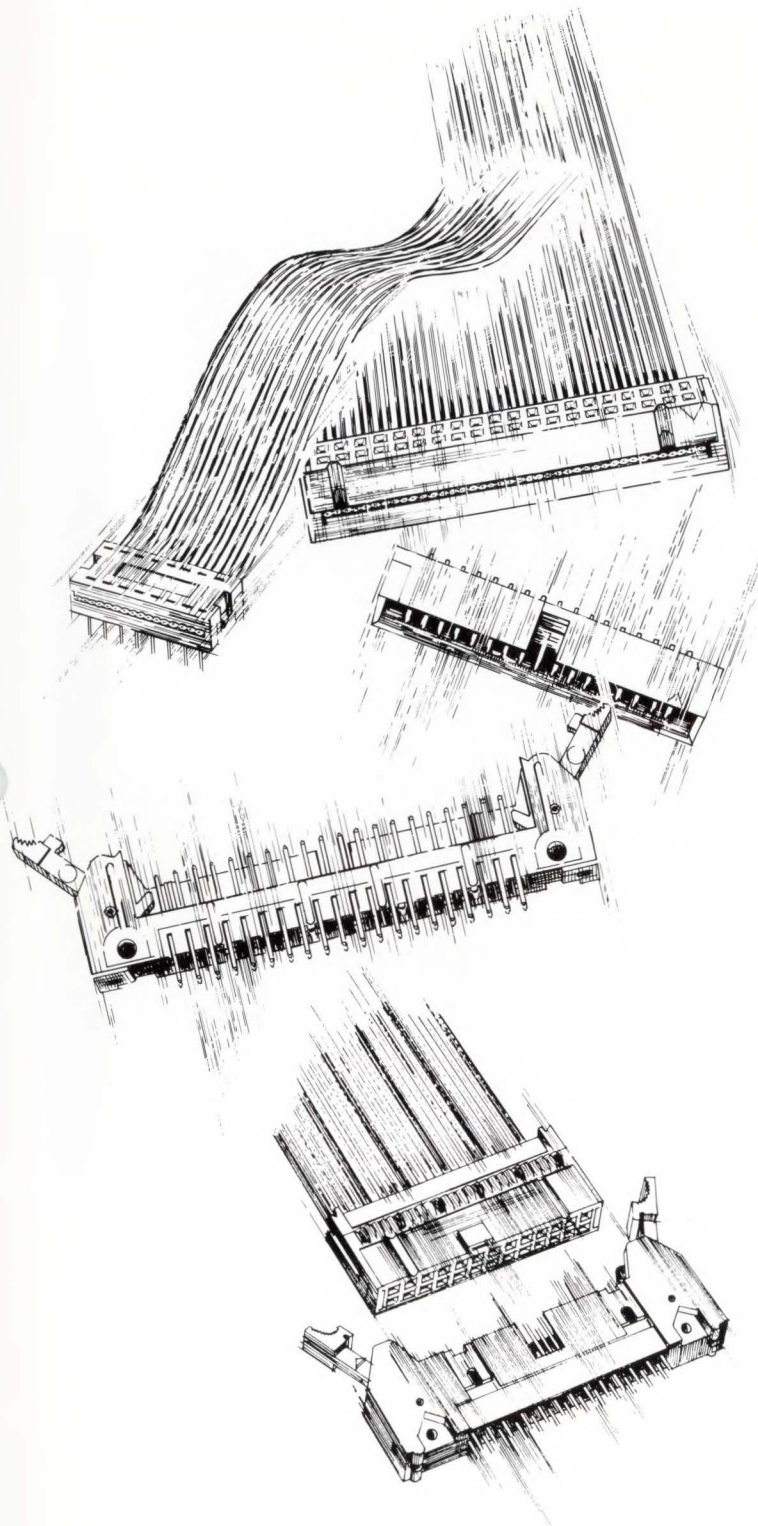
IDC Flat Cable Connectors

J. W. WILHOIT, INC.

4966 El Camino Real
Los Altos, CA 94022
(415) 961-3660

connect with **ebv**TM
subsidiary of REDM Industries

Table of Contents



SHROUDED and UNSHROUDED HEADERS

pages 4, 5 and 6

LOW PROFILE HEADERS

pages 7, 8 and 9

SPECIAL HEADER CONNECTORS

page 10

DIN CONNECTOR

page 11

SOCKET CONNECTORS

pages 12 and 13

DIP CONNECTORS

pages 14 and 15

PC BOARD TRANSITION CONNECTORS

pages 16 and 17

LOW PROFILE TRANSITION CONNECTORS

pages 18 and 19

D-SUBMINIATURE CONNECTORS

pages 20 and 21

INSTALLATION TOOLS

pages 22 and 23

ASSEMBLY SELECTION CHART

page 24



FLAT CABLE/HEADER CONNECTORS

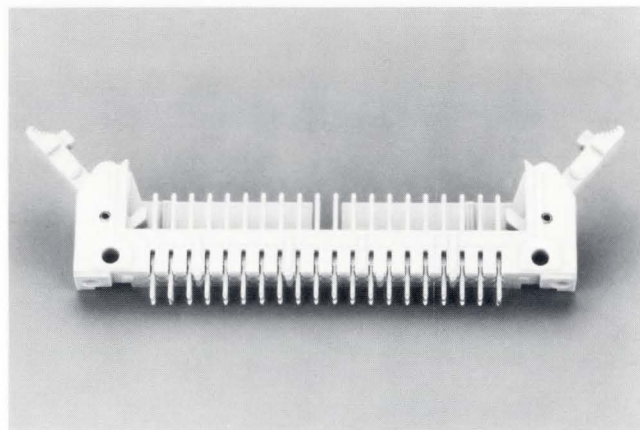
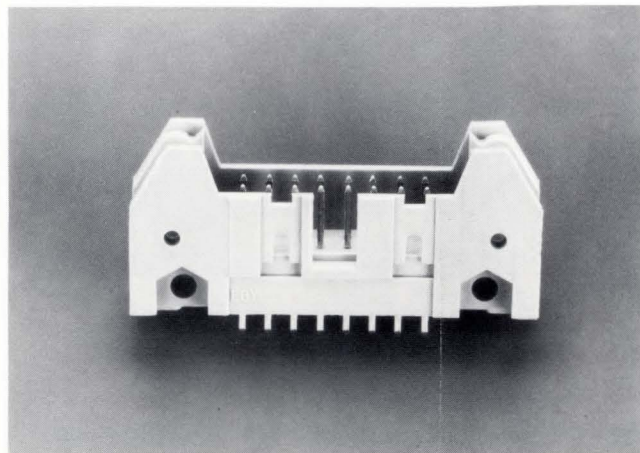
STANDARD HEADERS

3-WALL & 4-WALL

.100" × .100" (2.54 mm × 2.54 mm)

SPECIFICATIONS

Contact Rating:	1 Ampere
Dielectric Withstanding Voltage:	500 VAC RMS Min. (Sea Level)
Insulation Resistance:	5000 Megohms Min.
Operating Temperature:	-55°C to +120°C
Insulator Material:	Glass-Filled Polyester per MIL-M-24519, U.L. Rated 94V-0
Contact Material:	Phos. Bronze per QQ-B-750
Contact Finishes:	Gold per MIL-G-45204 Tin per MIL-P-81728
Color:	Gray



FEATURES

- Designed to mate with IS Series Socket Transition Connectors where quick reliable electrical connections are required.
- Available in straight and right angle configurations and with solder-to-board and solderless wrap contacts.
- Polarization is available in center-slot, snap-in key or molded-in key versions.
- U.L. 94V-0 rated glass-filled thermoplastic insulator.
- Selective gold plating and solder plating are available for maximum economy.
- Available in 3-wall version (unshrouded) or 4-wall version (shrouded).
- The 4-wall insulator affords the greatest protection to the male contact pins assuring correct socket mating with greater positive polarization features.
- Conforms to MIL-C-83502/20/21/24/25 requirements.

FLAT CABLE/HEADER CONNECTORS

ORDERING CODE



SERIES

IG-4-Wall Header
IH-3-Wall Header

NUMBER OF CONTACTS

10, 14, 16, 20, 26, 34, 40, 50, 60

KEY

O - With Window for Snap-in Key
A - With Key Molded in Place

CONTACT TERMINATIONS NOTE 5

1 - .102 (2.59) long for .062 (1.57) thk PCB's
2 - .134 (3.40) long for .094 (2.39) thk PCB's
3 - .165 (4.19) long for .125 (3.18) thk PCB's
4 - .595 (15.11) min. length Solderless Wrap Pins

HEADER CONFIGURATIONS

1 - Right Angle without Latches
2 - Right Angle with Short Latches
3 - Right Angle with Long Latches
4 - Straight without Latches
5 - Straight with Short Latches
6 - Straight with Long Latches

SPECIALS

AND VARIATIONS

Omit, if not required

CONTACT MATERIAL AND FINISH

01 - Ph Brz - .000010" (0.254 μ m)
Gold all over, over Nickel
03 - Ph Brz - .000030" (0.762 μ m)
Gold all over, over Nickel
33 - Ph Brz - .000030" (0.762 μ m)
Selective* Gold, Tail Gold Flash, over Nickel
81 - Ph Brz - .000010" (0.254 μ m)
Selective* Gold, Tail Tin/Lead, over Nickel
83 - Ph Brz - .000030" (0.762 μ m)
Selective* Gold, Tail Tin/Lead, over Nickel

*Selective Gold is on the critical (male/female) contact area only; balance is Gold Flashed.

CSA Certified.

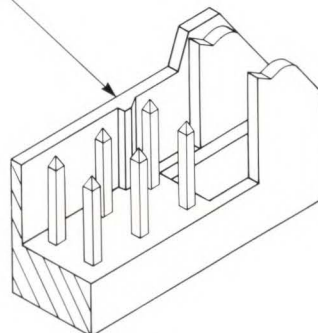


Recognized under the Component Program of Underwriter's Laboratories Inc.



OPTIONAL POLARIZATION FEATURES

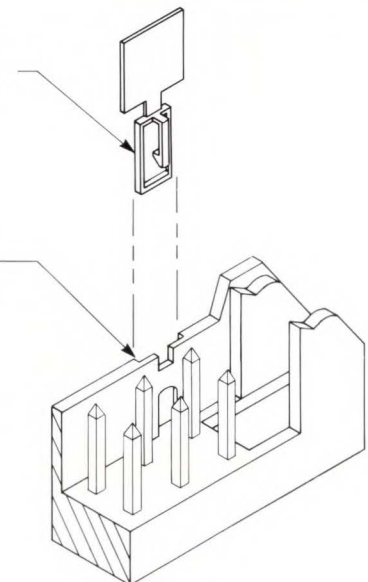
TYPE "A" KEY INSULATOR
(SEE ORDERING CODE)



INSULATOR WITH
MOLDED-IN KEY

POLARIZING KEY
PT. NO. 1500-501-01
(ORDER SEPARATELY)

TYPE "O" KEY INSULATOR
(SEE ORDERING CODE)

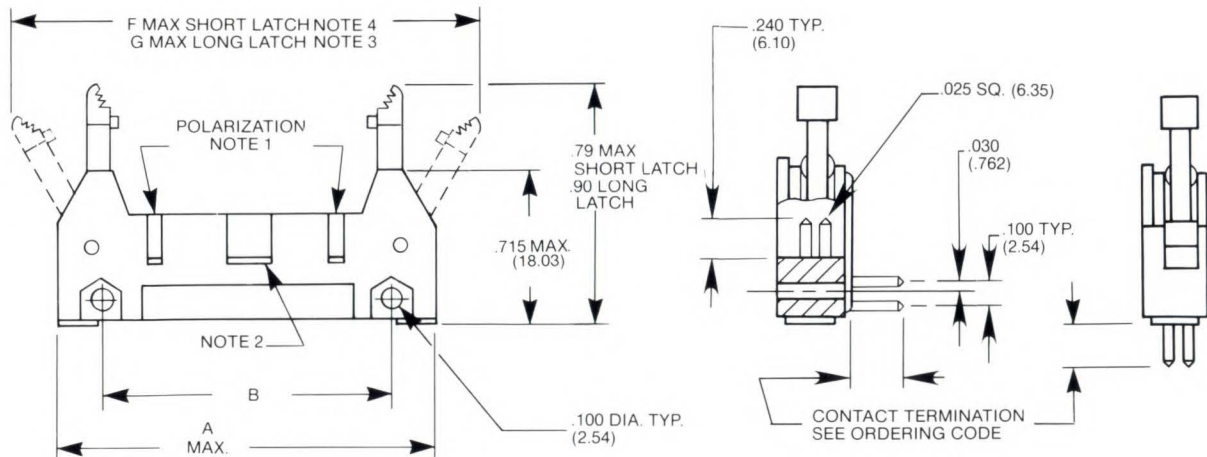
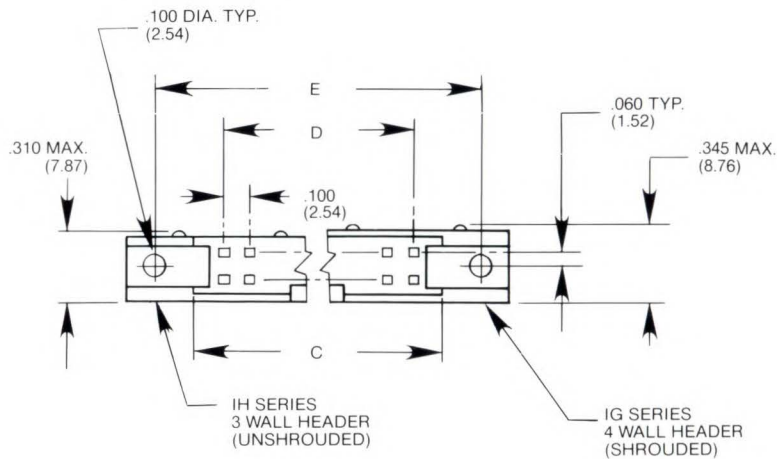


INSULATOR WITH WINDOW
FOR SNAP-IN KEY

NOTES:

- 1—Headers with 10 and 14 contact positions have a single polarization feature: All other sizes have double polarization features.
- 2—This center polarization slot does not appear on 10 contact position headers with type "O" polarizing (window for snap-in-key—See ordering code). All other sizes 10 thru 40 contact position have a single slot. 50 & 60 position have triple slots.
- 3—Long Latches are used when the mating socket (IS Series) has a strain relief.
- 4—Short Latches are used when the mating socket (IS Series) has no strain relief.
- 5—In the Contact Termination length only
 - P.C. Board pins (TERMINATION CODES 01, 02 or 03) are octagon shaped and are .031" (0.79) max OD.
 - Solderless Wrap Pins (TERMINATION CODE 04) are .025" (0.635) square.

No. of Contact Positions	A MAX	B	C	D	E	F MAX short latch	G MAX long latch
10	1.270 (32.26)	.858 (21.79)	.709 (18.01)	.400 (10.16)	1.098 (27.89)	1.77 (44.96)	1.94 (49.28)
14	1.470 (37.34)	1.058 (26.87)	.909 (23.09)	.600 (15.24)	1.298 (32.97)	1.97 (50.04)	2.14 (54.36)
16	1.570 (39.88)	1.158 (29.41)	1.009 (25.63)	.700 (17.78)	1.398 (35.51)	2.07 (52.58)	2.24 (56.90)
20	1.770 (44.96)	1.358 (34.49)	1.209 (30.71)	.900 (22.86)	1.598 (40.59)	2.27 (57.66)	2.44 (61.98)
26	2.070 (52.58)	1.658 (42.11)	1.509 (38.33)	1.200 (30.48)	1.898 (48.21)	2.57 (65.28)	2.74 (69.60)
34	2.470 (62.74)	2.058 (52.27)	1.909 (48.49)	1.600 (40.64)	2.298 (58.39)	2.97 (75.44)	3.14 (79.76)
40	2.770 (70.36)	2.358 (59.89)	2.209 (56.11)	1.900 (48.26)	2.598 (65.99)	3.27 (83.06)	3.44 (87.38)
50	3.270 (83.06)	2.858 (72.59)	2.709 (68.81)	2.400 (60.96)	3.098 (78.69)	3.77 (95.76)	3.94 (100.08)
60	3.770 (95.76)	3.358 (85.29)	3.209 (81.51)	2.900 (73.66)	3.598 (91.39)	4.27 (108.46)	4.44 (112.78)

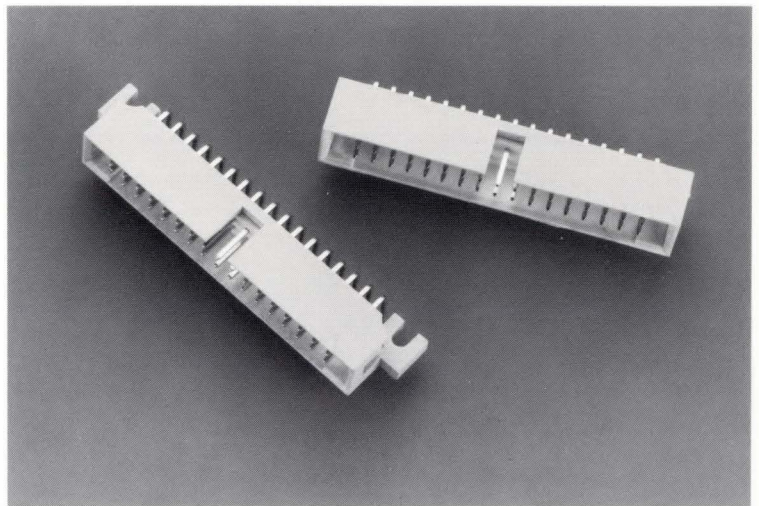


FLAT CABLE/HEADER CONNECTORS

LOW PROFILE HEADERS

4-WALL

.100" × .100" (2.54 mm × 2.54 mm)



SPECIFICATIONS

Contact Rating:	1 Ampere
Dielectric Withstanding Voltage:	500 VAC RMS Min. (Sea Level)
Insulation Resistance:	5000 Megohms Min.
Operating Temperature:	-55°C to +120°C
Insulator Material:	Glass-Filled Polyester per MIL-M-24519, U.L. Rated 94V-0
Contact Material:	Phos. Bronze per QQ-B-750
Contact Finishes:	Gold per MIL-G-45204 Tin per MIL-P-81728
Color:	Gray

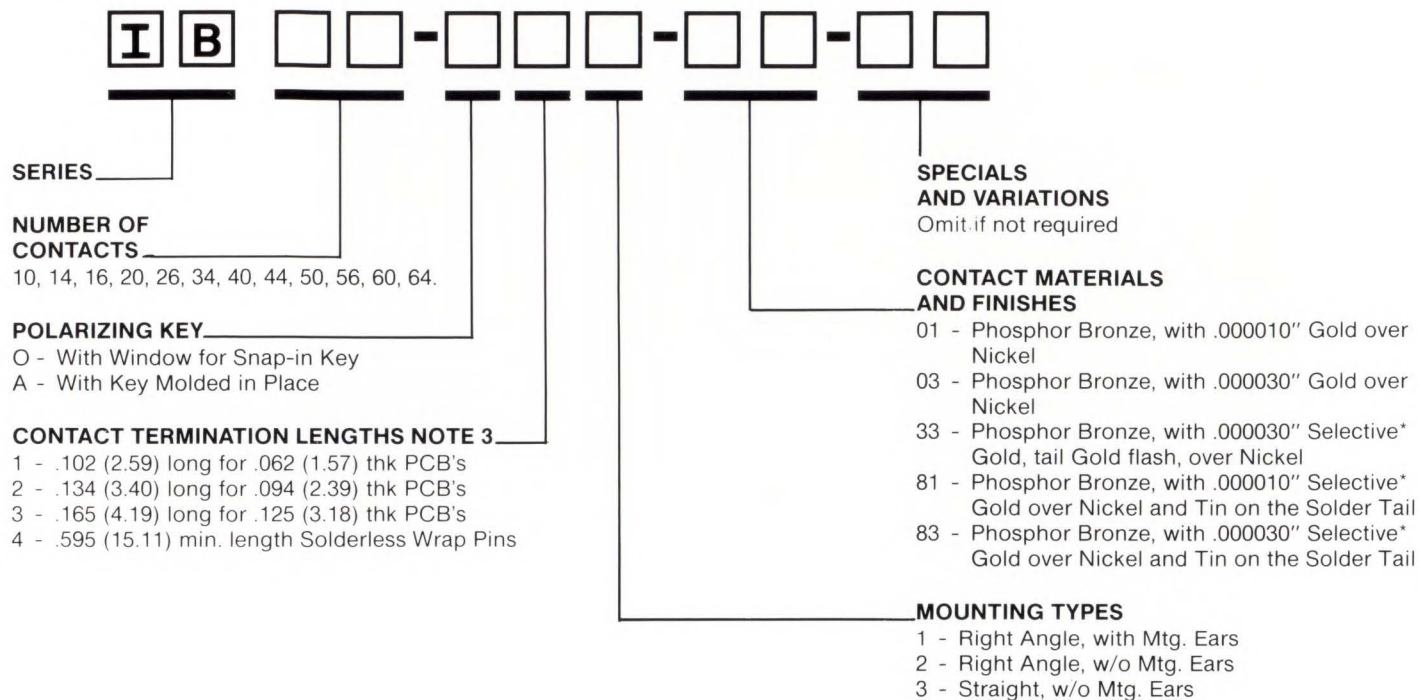
FEATURES

- Low Profile configuration minimizes real-estate consumption on the printed circuit board.
- Designed to mate with IS Series Socket Transition Connectors where quick reliable electrical connections are required.
- Available in straight and right angle configurations and with solder-to-board and solderless wrap contacts.
- Available in all standard sizes including 10, 14, 16, 20, 26, 34, 40, 44, 50, 56, 60 and 64 positions.
- Polarization is available in center-slot, snap-in key or molded-in key versions.
- U.L. 94V-0 rated glass-filled thermoplastic insulator.
- Selective gold plating and solder plating are available for maximum economy.
- 4-wall (shrouded) insulator that affords the greatest protection to the male contact pins assuring correct socket mating with greater positive polarization features.



FLAT CABLE/HEADER CONNECTORS

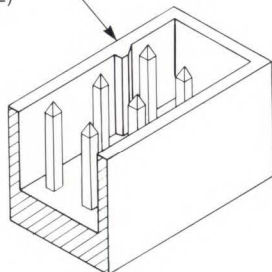
ORDERING CODE



**Selective Gold is on the critical (male/female) contact area only; balance is Gold Flashed.*

OPTIONAL POLARIZATION FEATURES

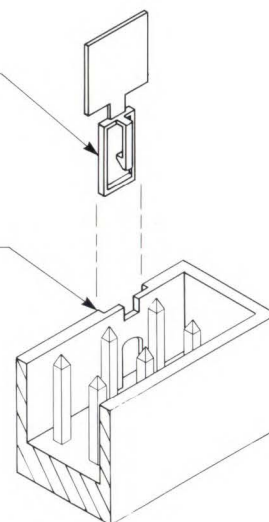
TYPE "A" KEY INSULATOR
(SEE ORDERING CODE)



INSULATOR WITH
MOLDED-IN KEY

POLARIZING KEY
PT. NO. 1500-501-01
(ORDER SEPARATELY)

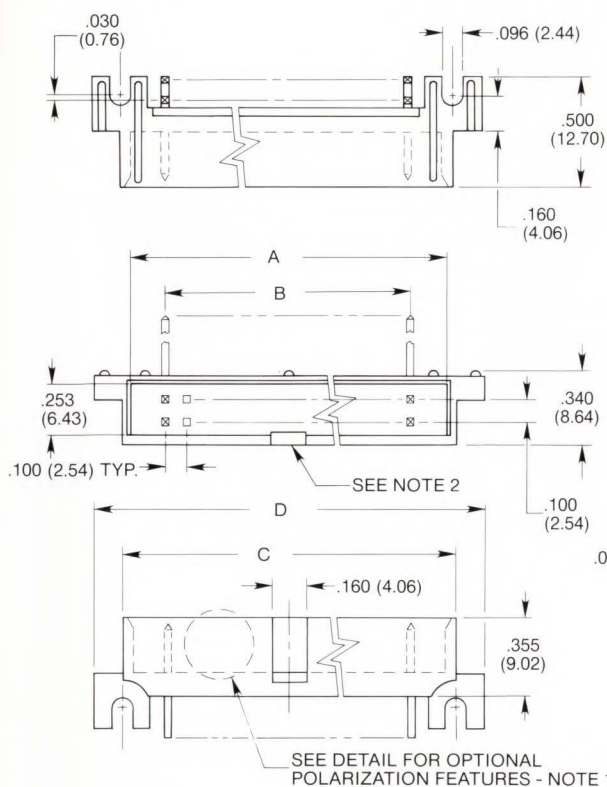
TYPE "O" KEY INSULATOR
(SEE ORDERING CODE)



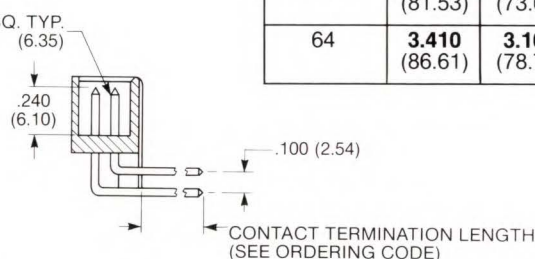
INSULATOR WITH WINDOW
FOR SNAP-IN KEY

FLAT CABLE/HEADER CONNECTORS

LOW PROFILE HEADER WITH MOUNTING EARS



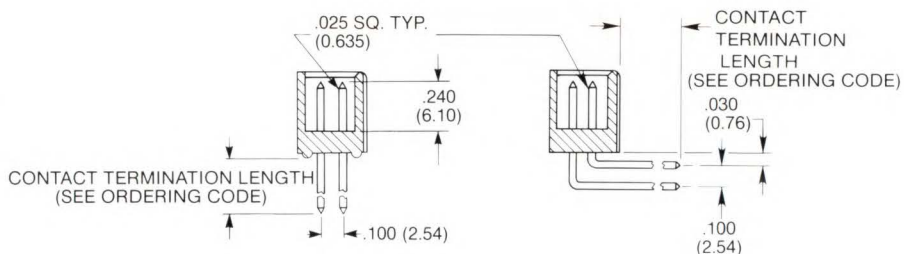
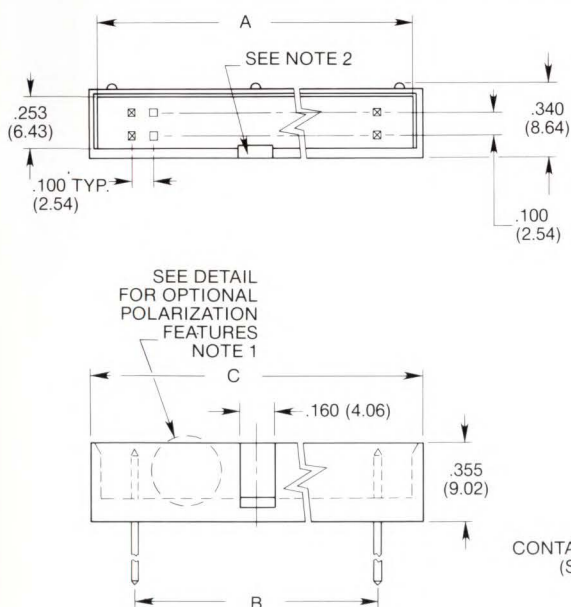
No. of Contacts	A	B	C	D
10	.710 (18.03)	.400 (10.16)	.800 (20.32)	1.050 (26.67)
14	.910 (23.11)	.600 (15.24)	1.000 (25.40)	1.250 (31.75)
16	1.010 (25.65)	.700 (17.78)	1.100 (27.94)	1.350 (34.29)
20	1.210 (30.73)	.900 (22.86)	1.300 (33.02)	1.550 (39.37)
26	1.510 (38.35)	1.200 (30.48)	1.600 (40.64)	1.850 (46.99)
34	1.910 (48.51)	1.600 (40.64)	2.000 (50.80)	2.250 (57.15)
40	2.210 (56.12)	1.900 (48.26)	2.300 (58.42)	2.550 (64.77)
44	2.410 (61.21)	2.100 (53.34)	2.500 (63.50)	2.750 (69.85)
50	2.710 (68.83)	2.400 (60.96)	2.800 (71.12)	3.050 (77.47)
56	3.010 (76.45)	2.700 (68.58)	3.100 (78.74)	3.350 (85.09)
60	3.210 (81.53)	2.900 (73.66)	3.300 (83.82)	3.550 (90.17)
64	3.410 (86.61)	3.100 (78.74)	3.500 (88.90)	3.750 (95.25)



NOTES:

- 1—Headers with 10 and 14 contact positions have a single polarization feature: All other sizes have double polarization features.
- 2—This center polarization slot does not appear on 10 contact position headers with type "O" polarizing (window for snap-in-key—See ordering code). All other sizes 10 thru 40 contact position have a single slot. 50 & 60 position have triple slots.
- 3—In the Contact Termination length only
 - P.C. Board pins (TERMINATION CODES 01, 02 or 03) are octagon shaped and are .031" (0.79) max OD:
 - Solderless Wrap pins (TERMINATION CODE 04) are .025" (0.635) square.

LOW PROFILE HEADER WITHOUT MOUNTING EARS





FLAT CABLE/HEADER CONNECTOR

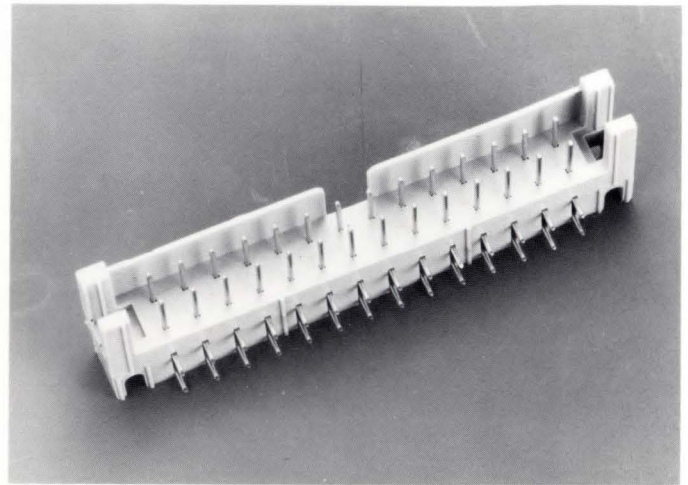
SPECIALTY HEADER

.150" × .150" (3,81 mm × 3,81 mm)

Right Angle Solder Pin (28 Contacts)

SPECIFICATIONS

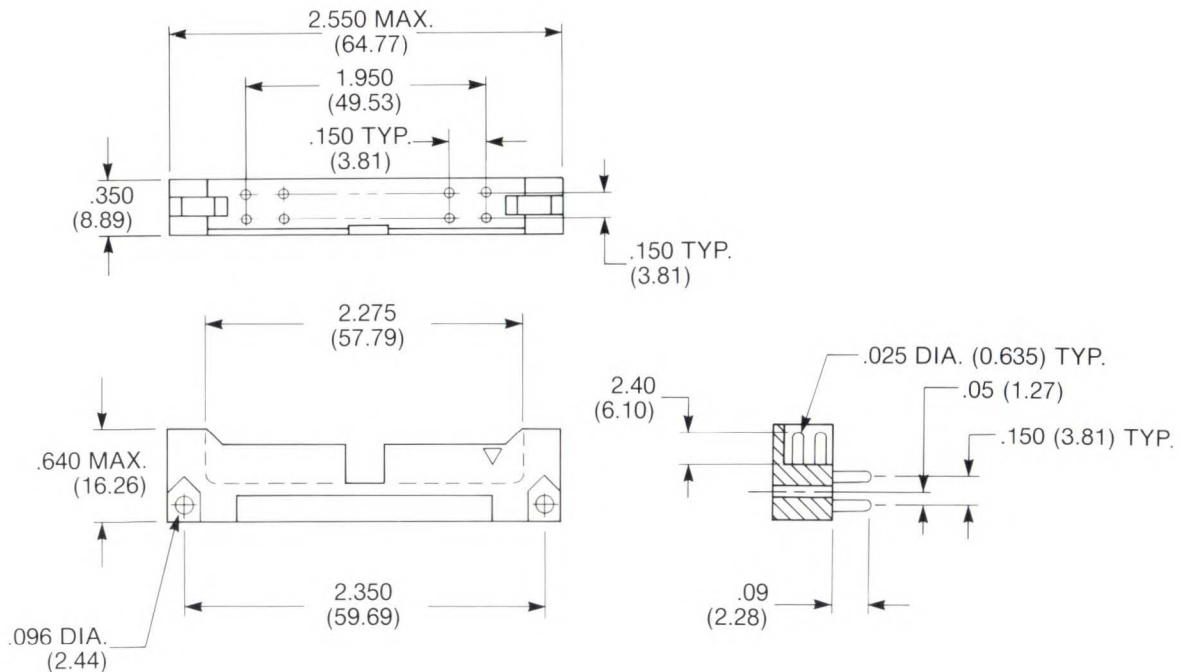
Contact Rating:	1 Ampere
Dielectric Withstanding Voltage:	500 VAC RMS Min (Sea Level)
Insulation Resistance:	5000 Megohms Min
Operating Temperature:	-55°C to +120°C
Insulator Material:	Glass-Filled Polyester per MIL-M-24519, U.L. Rated 94V-0
Contact Material:	Phos. Bronze per QQ-B-750
Contact Finishes:	Gold per MIL-G-45204
Color:	Gray



ORDERING INFORMATION

EBY Part No.	Contact Qty.	Contact Plating
1500-004-01	28	.000030" (0.762 μ m) in contact mating area, flash on remainder

Other platings available consult factory.



DIN CONNECTOR 41612 TYPE C

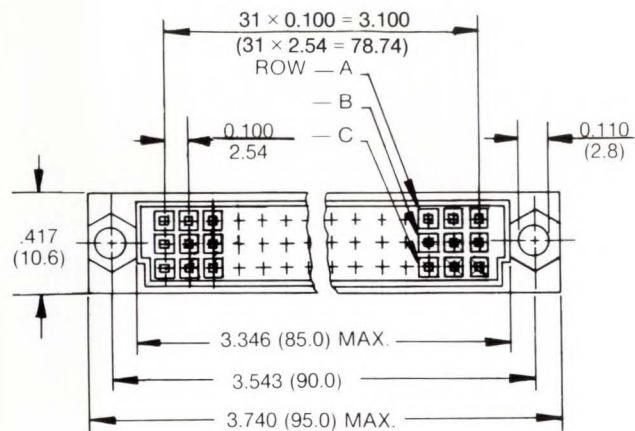
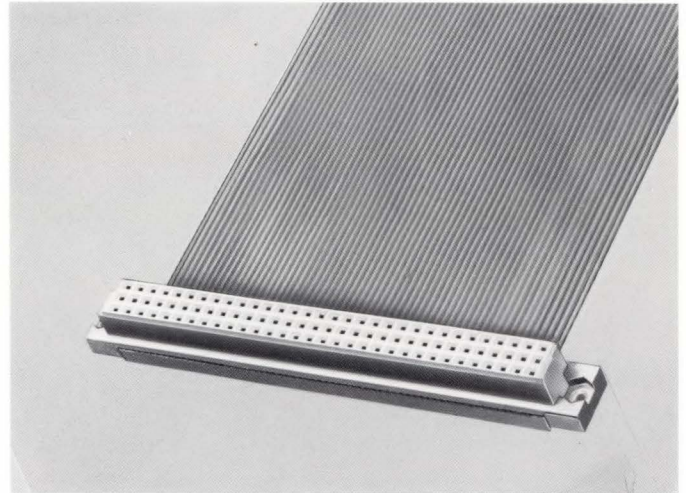
SPECIFICATIONS

Contact Rating:	1.5 Amp 26 AWG 1 Amp 28 AWG
Dielectric Withstanding Voltage:	500 VAC RMS
Insulation Resistance:	1×10^9 Ohms
Operating Temperature:	-55°C to +105°C
Wire Accommodation:	28 AWG Stranded and Solid 26 AWG Stranded
Insulation Material:	Gray Glass-Filled Polyester Rated 94V-0
Contact Material:	Phos. Bronze Alloy
Contact Finish:	0.000020" (0.51 μ m) Selective Gold*Over Nickel with Tin- Lead on the Termination End

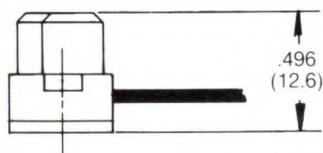
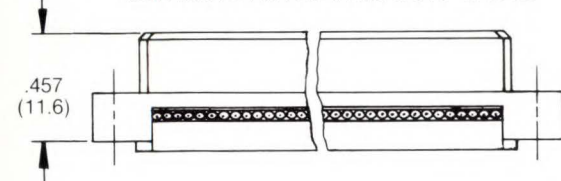
*Selective Gold is on the critical (male/female) contact area only, the remainder is Gold Flashed all over.

FEATURES

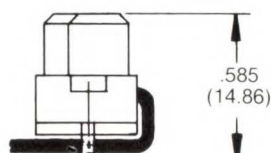
- Eby IDC DIN Female Connectors are compatible with industry standards.
- A dual beam contact with closed protected entry aids in pin alignment and greatly reduces the possibility of contact damage.
- Cabling may be daisy-chain or end-terminated.



CONTACTS FITTED IN ROWS A - C ONLY



ASSEMBLY WITH FEED THROUGH COVER

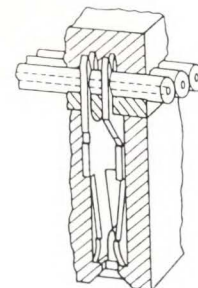
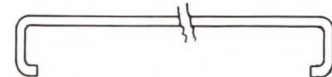


ASSEMBLY WITH FEED THROUGH COVER AND STRAIN RELIEF.

ORDERING INFORMATION

Description	Part Number
Connector	1500-008
Strain Relief	1500-009

STRAIN RELIEF





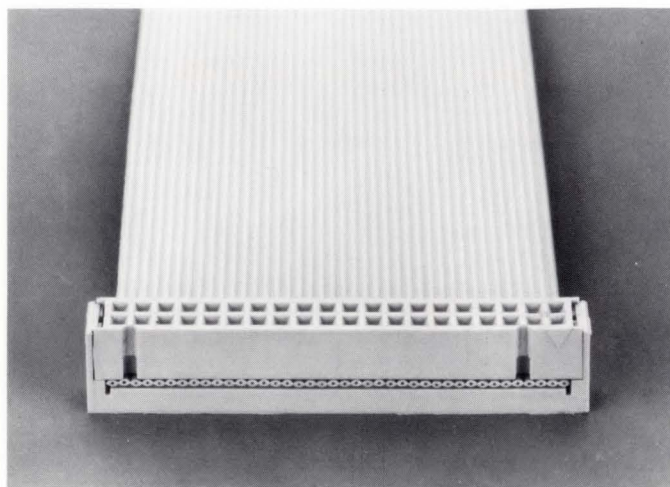
FLAT CABLE/SOCKET CONNECTORS

SOCKET

.100" × .100" (2.54 mm × 2.54 mm)

SPECIFICATIONS

Contact Rating:	1 Ampere
Dielectric Withstanding Voltage:	500 VAC RMS (Sea Level)
Insulation Resistance:	5000 Megohms Min.
Operating Temperature:	-55°C to +120°C
Insulator, Cover & Strain Relief:	Glass-Filled Polyester per MIL-M-24519, UL Rated 94V-0
Contact Material:	Dual Beam Contact (Fig. A) Phos. Bronze per QQ-B-750 Single Beam Contact (Fig. D) Beryllium Copper per QQ-C-533
Contact Finish:	Gold per MIL-G-45204 Tin per MIL-P-81728
Color:	Gray
Cable Size:	Accommodates wire sizes #26 AWG solid and stranded, #28 AWG solid and stranded, #30 AWG solid.



FEATURES

- Mates with .025" (0.635) square or round pins using either a single beam cantilever contact or dual beam cantilever contact for added reliability & durability.
- Various polarization features are available.
- Pull tabs available.
- Available with a strain relief which helps assure electrical connection against abuse. The strain relief can be purchased separately.
- Two types of covers are available, the open ended version and the positive wire stop version. Wire stop version of the cover has inspection slots to visually check for the proper placement of the flat cable before and after terminating.
- Conforms to MIL-C-83503/7 requirements.

No. of Contact Positions	A Max	B
10	.69 (17.53)	.400 (10.16)
14	.89 (22.61)	.600 (15.24)
16	.99 (25.15)	.700 (17.78)
20	1.19 (30.23)	.900 (22.86)
26	1.49 (37.85)	1.200 (30.48)
34	1.89 (48.01)	1.600 (40.64)
40	2.19 (55.63)	1.900 (48.26)
50	2.69 (68.33)	2.400 (60.96)
60	3.19 (81.03)	2.900 (73.66)



PULL TABS

ORDERING CODE



IE10 for 10, 14 & 16 contact connectors
IE20 for 20 & 26 contact connectors
IE34 for 34 & 40 contact connectors
IE50 for 50 & 60 contact connectors

NOTES:

Pull tabs can be used with the IS, ID and IK series connectors.

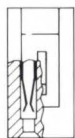


FIG A
DUAL BEAM CONTACT

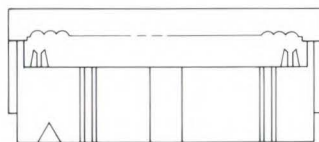


FIG B
DUAL BEAM SOCKET
WITH CENTER KEY PROJECTION

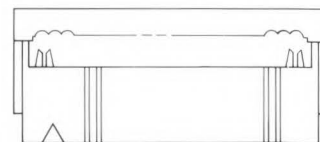


FIG C
DUAL BEAM SOCKET
WITHOUT CENTER KEY PROJECTION

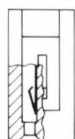


FIG D
SINGLE BEAM CONTACT

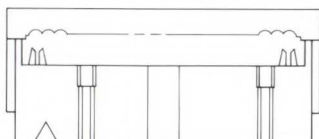


FIG E
SINGLE BEAM SOCKET
WITH CENTER KEY PROJECTION

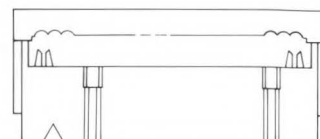


FIG F
SINGLE BEAM SOCKET
WITHOUT CENTER KEY PROJECTION

FLAT CABLE/SOCKET CONNECTORS

ORDERING CODE



SERIES

NUMBER OF CONTACTS

10, 14, 16, 20, 26, 34, 40, 50, 60

CONTACT AND CENTER KEY CONFIGURATION

- X - Dual beam female contact (see Fig. A) with center key projection (see Fig. B)
- A - Dual beam female contact (see Fig. A) without center key projection (see Fig. C)
- B - Single beam female contact (see Fig. D) with center key projection (see Fig. E)
- C - Single beam female contact (see Fig. D) without center key projection (see Fig. F)

SOCKET CONFIGURATION

- 01 - Open Cover with Strain Relief
- 02 - Open Cover without Strain Relief
- 11 - Wire Stop Cover with Strain Relief
- 12 - Wire Stop Cover without Strain Relief
- 20 - Strain Relief Only**

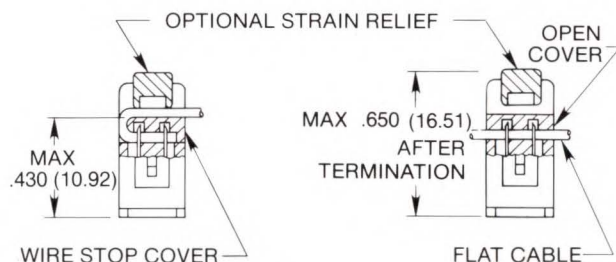
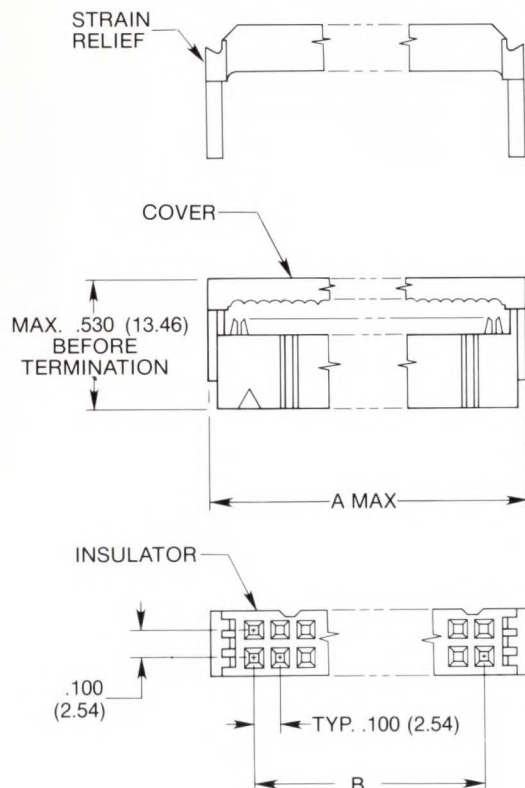
SPECIALS AND VARIATIONS
Omit, if not required

CONTACT MATERIALS AND FINISHES

- 01 - Ph Brz - .000010" (0.254 μ m) Gold over Nickel
- 03 - Ph Brz - .000030" (0.762 μ m) Gold over Nickel
- 33 - Ph Brz - .000030" (0.762 μ m) Selective* Gold Gold flash, IDC over Nickel
- 81 - Ph Brz - .000010" (0.254 μ m) Selective* Gold/tin-lead IDC over Nickel
- 82 - Ph Brz - .000020" (0.508 μ m) Selective* Gold/tin-lead IDC over Nickel
- 83 - Ph Brz - .000030" (0.762 μ m) Selective* Gold/tin-lead IDC over Nickel
- 85 - Ph Brz - .000050" (1.270 μ m) Selective* Gold/tin-lead IDC over Nickel

*Selective Gold is on the critical (Female) contact area only, the remainder is Gold Flashed all over.

**Example of Strain Relief ordering.
"IS26-X20" (Omit all other digits)



WIRE STOP COVER

FLAT CABLE

CSA Certified.

Recognized under the Component Program of Underwriter's Laboratories Inc.



FLAT CABLE/DIP CONNECTORS

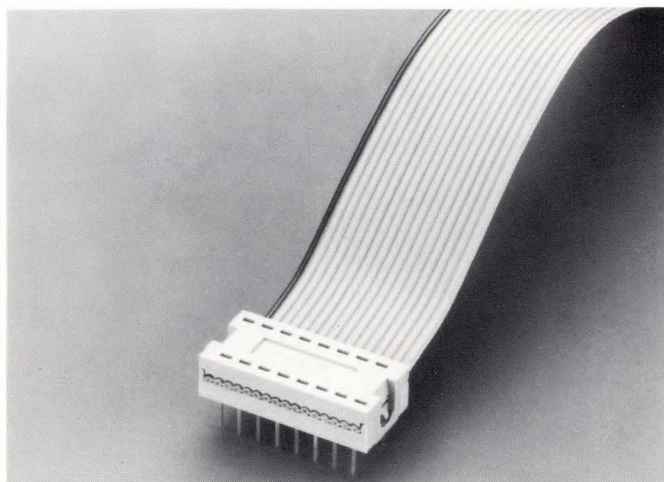
DIP PLUG CONNECTORS

.100" × .300" (2.54 mm × 7.62 mm)

.100" × .600" (2.54 mm × 15.24 mm)

SPECIFICATIONS

Contact Rating:	1 Ampere
Dielectric Withstanding Voltage:	500 VAC RMS Min (Sea Level)
Insulation Resistance:	5000 Megohms Min.
Operating Temperature:	-55°C to +120°C
Insulator Material:	Glass-Filled Polyester per MIL-M-24519, U.L. Rated 94V-0
Contact Material:	Phos. Bronze per QQ-B-750
Contact Finishes:	Gold per MIL-G-45204 Tin per MIL-P-81728
Color:	Gray
Cable Size:	Accommodates wire sizes #26 AWG solid and stranded, #28 AWG solid and stranded, #30 AWG solid.



FEATURES

- Quick low cost direct termination from flat cables to P.C. Boards or I.C. Sockets.
- Mates with any I.C. Socket.
- Can be soldered directly to P.C. Boards.
- Available with Gold or Tin plated contacts.
- Optional Strain Relief
- Pull Tabs available, see page 12
- Anti-solder wicking feature designed into insulator.
- Conforms to MIL-C-83503/6 requirements.


No. of Contact Positions	A Max	B Max	C	D
14	.431 (10.95)	.780 (19.81)	.600 (15.24)	.300 (7.62)
16	.431 (10.95)	.880 (22.35)	.700 (17.78)	.300 (7.62)
24	.731 (18.57)	1.280 (32.51)	1.100 (27.94)	.600 (15.24)
40	.731 (18.57)	2.080 (52.83)	1.900 (48.26)	.600 (15.24)

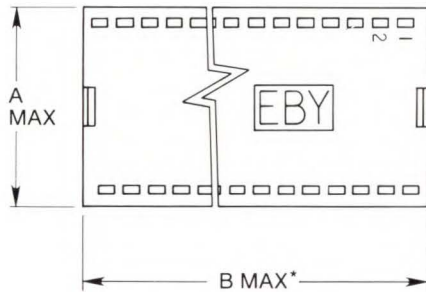
FLAT CABLE/DIP CONNECTORS

ORDERING CODE

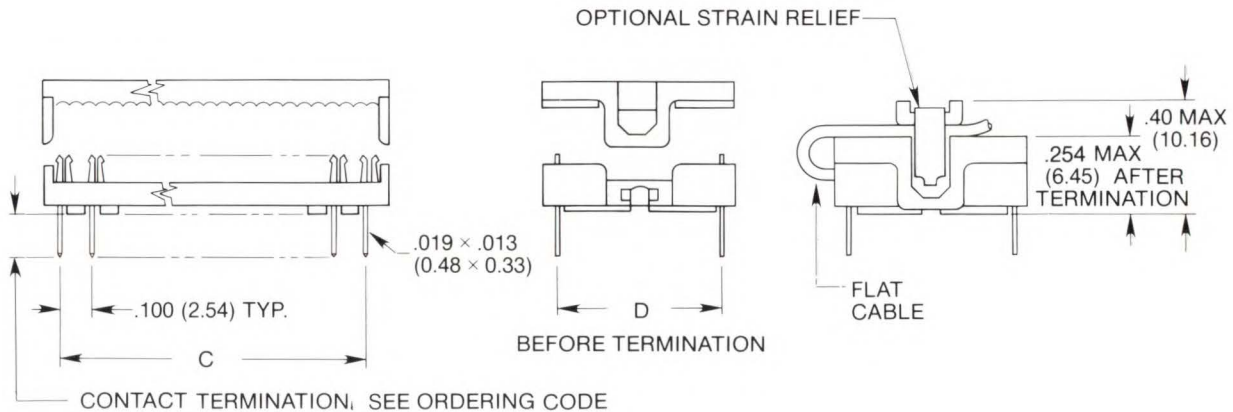
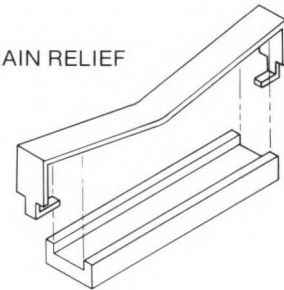
I	D	<input type="text"/>	<input type="text"/>	-	X	<input type="text"/>	<input type="text"/>	-	<input type="text"/>	<input type="text"/>	-	<input type="text"/>	<input type="text"/>
SERIES		NUMBER OF CONTACTS 14, 16, 24, 40				CONTACT TERMINATION AND STRAIN RELIEF 03 - .165 (4.19) min length without Strain Relief 04 - .165 (4.19) min length with Strain Relief 05 - Strain Relief Only				SPECIALS AND VARIATIONS Omit, if not required			
CONTACT MATERIALS AND FINISHES 01 - Ph Brz - .000010" (0.254 μ m) Gold over Nickel 03 - Ph Brz - .000030" (0.762 μ m) Gold over Nickel 43 - Ph Brz - Bright Tin													

CSA Certified. 

Recognized under the Component 
Program of Underwriter's Laboratories Inc.



OPTIONAL STRAIN RELIEF



* EXPANSION OF SNAP-IN FINGERS NOT INCLUDED

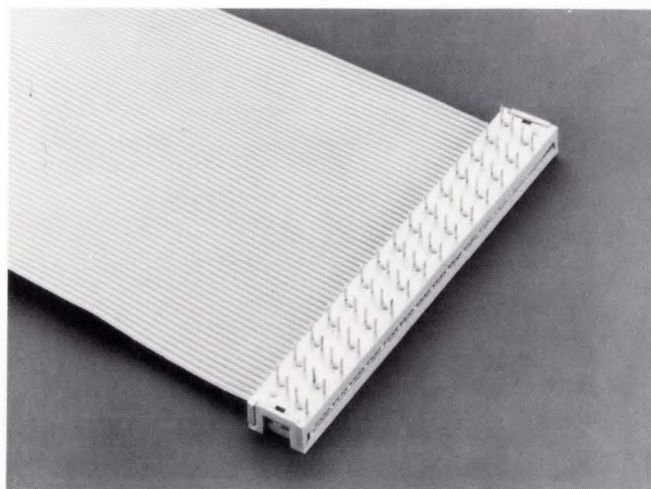


FLAT CABLE /PC BOARD-TRANSITION CONNECTORS

PC BOARD CONNECTORS 4-ROW VERSION

SPECIFICATIONS

Contact Rating:	1 Ampere
Dielectric Withstanding Voltage:	500 VAC RMS Min (Sea Level)
Insulation Resistance:	5000 Megohms Min
Operating Temperature:	-55°C to +120°C
Insulator Material:	Glass-Filled Polyester per MIL-M-24519, U.L. Rated 94V-0
Contact Material:	Phos. Bronze per QQ-B-750
Contact Finishes:	Gold per MIL-G-45204 Tin per MIL-P-81728
Color:	Gray
Cable Size:	Accommodates wire sizes #26 AWG solid and stranded, #28 AWG solid and stranded, #30 AWG solid.



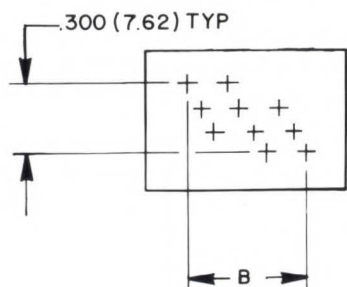
FEATURES

- Adaptable to daisy-chain types of applications.
- Flat cable can be terminated before or after the connector is soldered to the P.C. Board.
- End latches keep the connector halves locked together during and after the crimping operation.
- Anti-solder wicking feature designed into insulator.
- Conforms to MIL-C-83503/23 requirements.

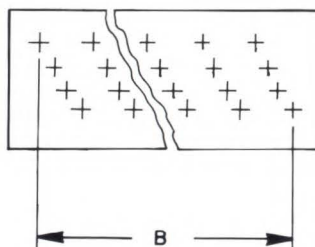
No. of Contact Positions	A Max	B
10	.700 (17.78)	.450 (11.43)
16	1.000 (25.40)	.750 (19.05)
20	1.200 (30.48)	.950 (24.13)
26	1.500 (38.10)	1.250 (31.75)
34	1.900 (48.26)	1.650 (41.91)
40	2.200 (55.88)	1.950 (49.53)
50	2.700 (68.58)	2.450 (62.23)
60	3.200 (81.28)	2.950 (74.93)

PC BOARD HOLE PATTERN

Mounting side of PC Board

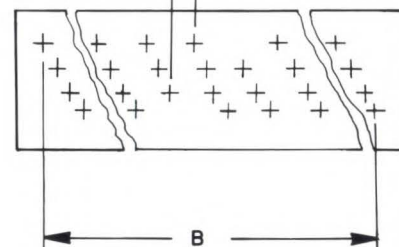


10 POSITION



16, 20, 40 and 60 POSITION

.050 (1.27) TYP
ALL PATTERNS



26, 34 and 50 POSITION

FLAT CABLE/PC BOARD-TRANSITION CONNECTORS

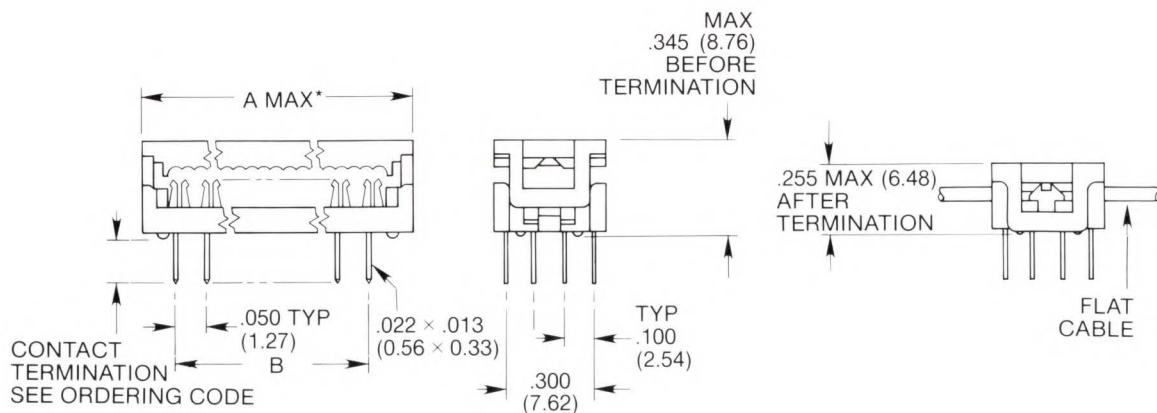
ORDERING CODE

I	P	<input type="text"/>	<input type="text"/>	-	X	<input type="text"/>	<input type="text"/>	-	<input type="text"/>	<input type="text"/>	-	<input type="text"/>	<input type="text"/>
SERIES		NUMBER OF CONTACTS			CONTACT TERMINATIONS				CONTACT MATERIALS AND FINISHES		SPECIALS AND VARIATIONS		
		10, 16, 20, 26, 34, 40, 50, 60			01 - .090" (2.29) min length 02 - .146" (3.71) min length				01 - Ph Brz - .000010" (0.254 μ m) Gold over Nickel 03 - Ph Brz - .000030" (0.762 μ m) Gold over Nickel 43 - Ph Brz - Bright Tin		Omit, if not required		

CSA Certified 

Recognized under the Component 
Program of Underwriter's Laboratories Inc.

4-ROW VERSION



*EXPANSION OF SNAP-IN FINGERS NOT INCLUDED



FLAT CABLE/PC BOARD-TRANSITION CONNECTORS

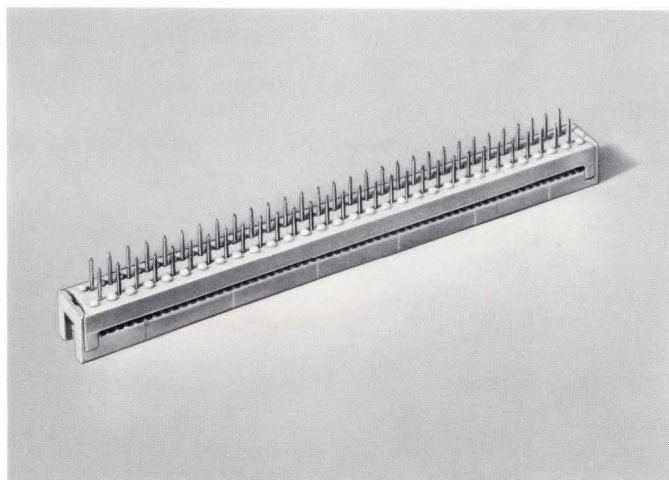
PC BOARD CONNECTORS

2-ROW VERSION

.100" × .100" (2.54 mm × 2.54 mm)

SPECIFICATIONS

Contact Rating:	1 Ampere
Dielectric Withstanding Voltage:	500 VAC RMS Min (Sea Level)
Insulation Resistance:	5000 Megohms Min
Operating Temperature:	-55°C to +120°C
Insulator Material:	Glass-Filled Polyester per MIL-M-24519, U.L. Rated 94V-0
Contact Material:	Phos. Bronze per QQ-B-750
Contact Finishes:	Gold per MIL-G-45204 Tin per MIL-P-81728
Color:	Gray
Cable Size:	Accommodates wire sizes #26 AWG solid and stranded, #28 AWG solid and stranded, #30 AWG solid.



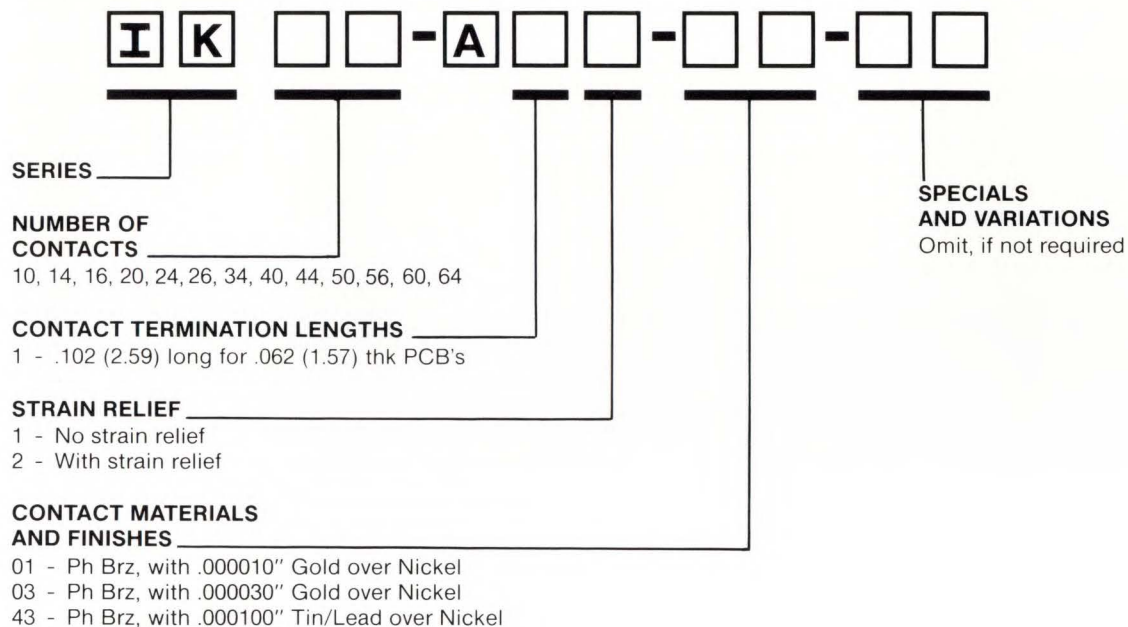
FEATURES

- Minimizes the consumption of PCB real-estate.
- Adaptable to daisy-chain types of applications.
- Flat cable can be terminated before or after the connector is soldered to the P.C. Board.
- End latches keep the connector halves locked together during and after the crimping operation.
- Anti-solder wicking feature designed into insulator.
- Optional strain relief.
- Pull tabs available, see page 12

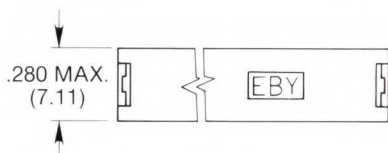
No. of Contact Positions	A Max	B
10	.700 (17.78)	.400 (10.16)
14	.900 (22.86)	.600 (15.24)
16	1.000 (25.40)	.700 (17.78)
20	1.200 (30.48)	.900 (22.86)
26	1.500 (38.10)	1.200 (30.48)
34	1.900 (48.26)	1.600 (40.64)
40	2.200 (55.88)	1.900 (48.26)
44	2.400 (60.96)	2.100 (53.34)
50	2.700 (68.58)	2.400 (60.96)
60	3.200 (81.28)	2.900 (73.66)
64	3.400 (86.36)	3.100 (78.74)

FLAT CABLE/PC BOARD-TRANSITION CONNECTORS

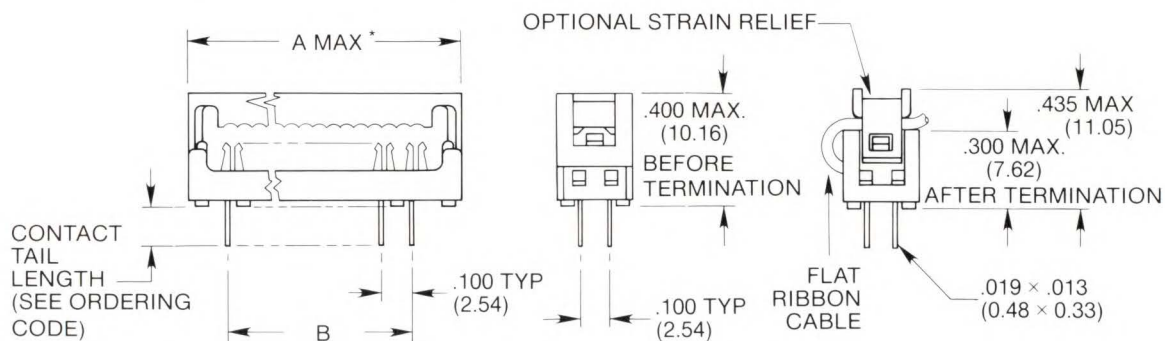
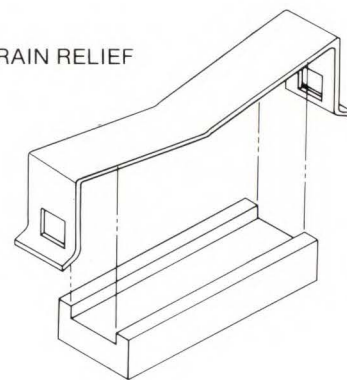
ORDERING CODE



2-ROW VERSION .100" × .100" (2.54 mm × 2.54 mm)



STRAIN RELIEF



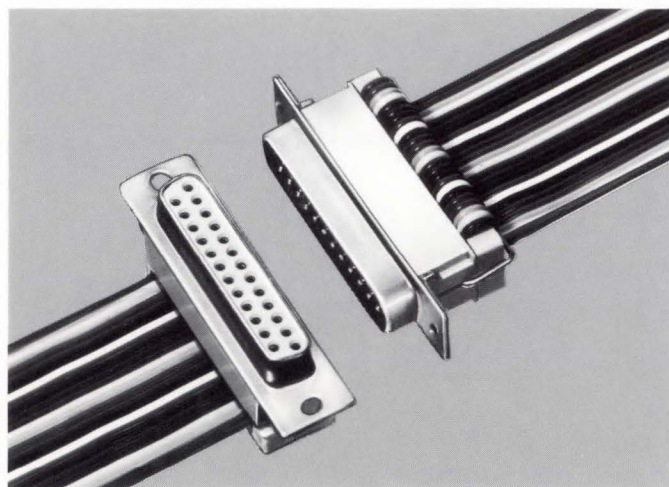
* EXPANSION OF SNAP-IN FINGERS NOT INCLUDED



IDC/D-SUBMINIATURE CONNECTORS

SPECIFICATIONS

Current Rating:	1.5 Amp 26 AWG 1 Amp 28 AWG
Dielectric Withstanding Voltage:	500 VAC RMS
Insulation Resistance:	1×10^9 ohms
Operating Temperature Range:	-55°C to +105°C
Insulator Material:	Gray, Glass-Filled Polyester U.L. 94V-0
Wire Accommodation:	AWG 28 stranded and solid, AWG 26 stranded
Contact Spacing:	.054" (1.37). Terminates standard .050" (1.27) ribbon cable
Contact Material:	Phos. Bronze Alloy



FEATURES

- Our metal shell IF series IDC "D" mates with Eby DS series "D" and other industry standard "D" subminiature connectors with mating pins on .054 centers.
- Wire-form strain reliefs are available and the connectors can be cabled in daisy-chain or end terminated.
- Standard .050 pitch round wire planar cable is terminated without special preparation. The internal contact construction makes the transition from .050 to .054 centers.
- Accepts 28 and 26 AWG stranded and 28 AWG solid wire connectors.

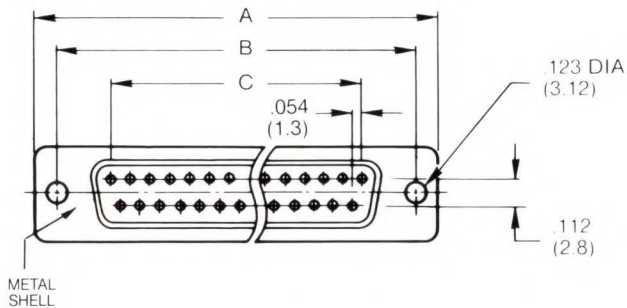
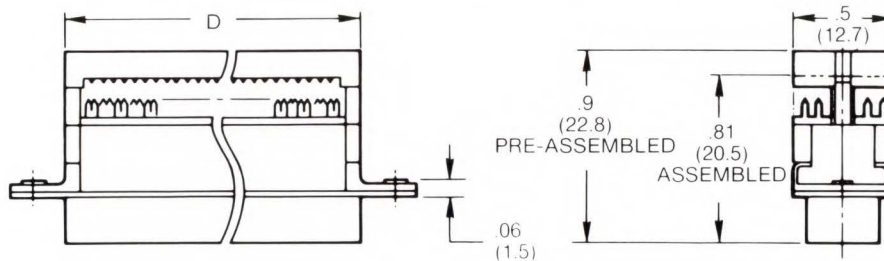
No. of Contacts	A	B	C	D	E
9	1.21 (30.8)	.98 (25.0)	.43 (10.9)	.65 (16.4)	.71 (18.0)
15	1.54 (39.1)	1.31 (33.32)	.76 (19.33)	.97 (24.7)	1.04 (26.4)
25	2.09 (53.1)	1.85 (47.0)	1.30 (33.13)	1.52 (38.5)	1.57 (39.8)
37	2.74 (69.5)	2.50 (63.5)	1.96 (49.7)	2.16 (54.9)	2.23 (56.6)
50	2.71 (68.7)	2.41 (61.1)	1.74 (44.2)	2.71 (68.7)	2.22 (56.39)

IDC/D-SUBMINIATURE CONNECTORS

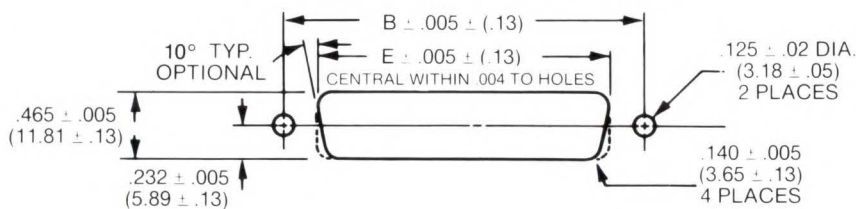
ORDERING CODE

I	F				X	X				
SERIES		NUMBER OF CONTACTS		CONTACT TYPE		CONTACT MATERIALS AND FINISHES		SPECIALS AND VARIATIONS		
		9, 15, 25, 37, 50		P - Pin (Male) S - Socket (Female) R - Strain Relief		02 - Ph Brz - .000020" (0.51 μ m) Selective Gold*over Nickel with Tin-Lead on the termination end.		Omit, if not required		

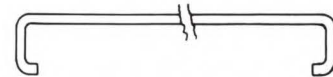
*Selective Gold is on the critical (male/female) contact area only.



RECOMMENDED PANEL CUTOUT DIMENSION



STRAIN RELIEF

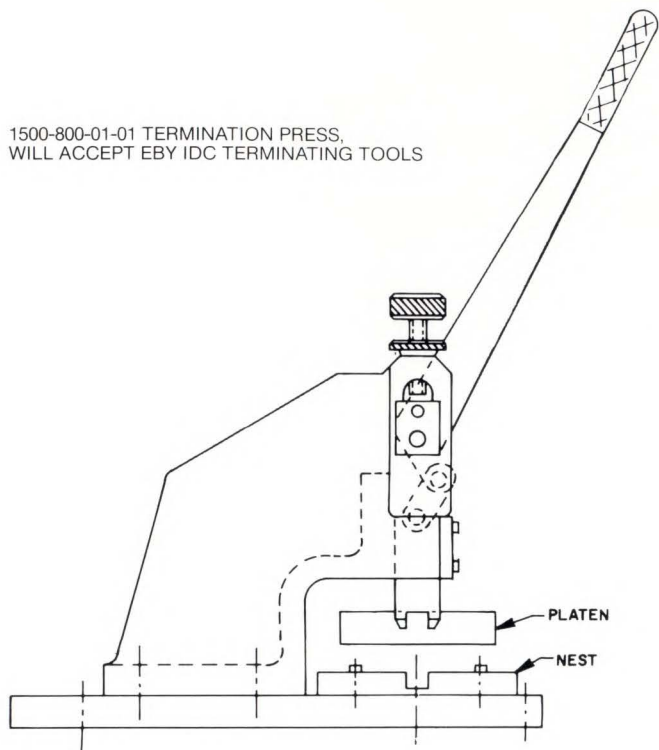


See ordering code for part number
Example of Strain Relief
Part No.: "IF25-RXX"

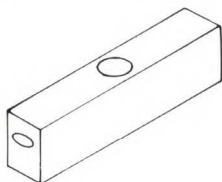


FLAT CABLE/INSTALLATION TOOLS

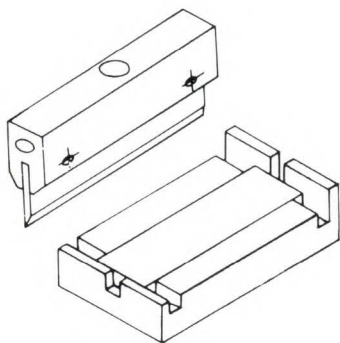
1500-800-01-01 TERMINATION PRESS,
WILL ACCEPT EBY IDC TERMINATING TOOLS



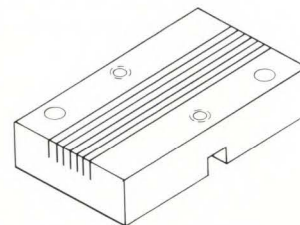
1500-800-01-01 PLATEN



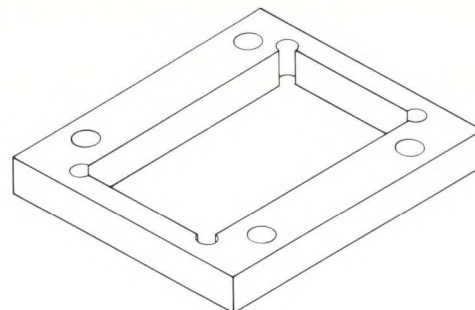
1500-800-05-01 CABLE CUTTING KIT



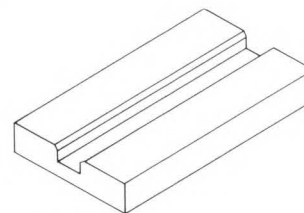
1500-800-06-02 LOCATOR PLATE, USED WITH
IS-SOCKETS
ID-DIP CONNECTORS
IP-PCB CONNECTORS-OFFSET PATTERN
IK-PCB CONNECTORS-STRAIGHT PATTERN



1500-800-14-01 ADAPTOR: WILL FIT 3M PRESS AND
ACCEPT EBY LOCATOR PLATE 1500-800-06-02

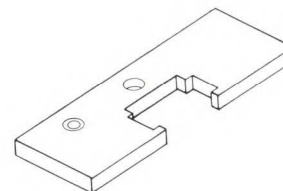


1500-800-09-02 LOCATOR PLATE, USED WITH
"F"- "D" SUB CONNECTORS



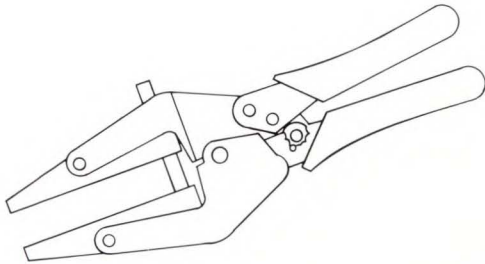
CONNECTOR POSITIONING AND CABLE STOP
BLOCK, USED WITH ID-DIP CONNECTORS

1500-800-13-14 FOR ID14 SERIES CONNECTORS
1500-800-13-16 FOR ID16 SERIES CONNECTORS
1500-800-13-24 FOR ID24 SERIES CONNECTORS
1500-800-13-40 FOR ID40 SERIES CONNECTORS
1500-800-12-01 SOCKET POSITIONING AND
CABLE STOP BLOCK, USED WITH IS-SOCKETS
1500-800-12-02 CONNECTOR POSITIONING
AND CABLE STOP BLOCK, USED WITH
IP-PCB CONNECTORS

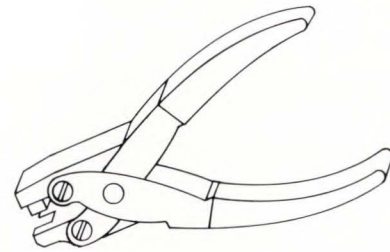


FLAT CABLE/INSTALLATION TOOLS

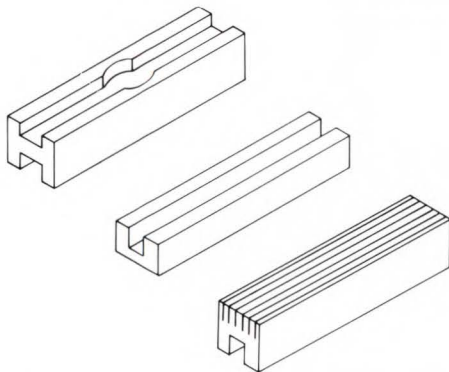
1500-801-00-01 HAND TERMINATION TOOL



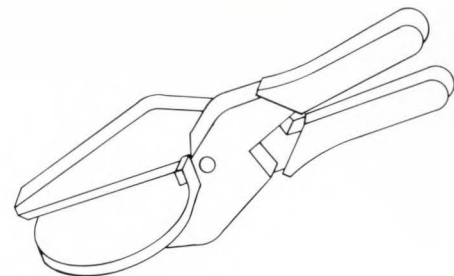
1500-800-10-01 HAND KEY REMOVAL TOOL, USED WITH IB, IG AND IH HEADERS WITH "A" TYPE KEY



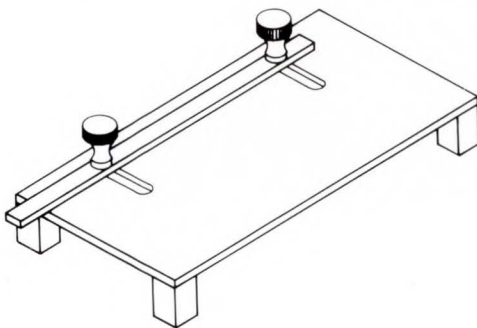
1500-801-01-01 LOCATOR PLATE KIT FOR HAND TERMINATION TOOL, USED WITH
IS-SOCKETS
ID-DIP CONNECTORS
IP-PCB CONNECTORS
IK-PCB CONNECTORS



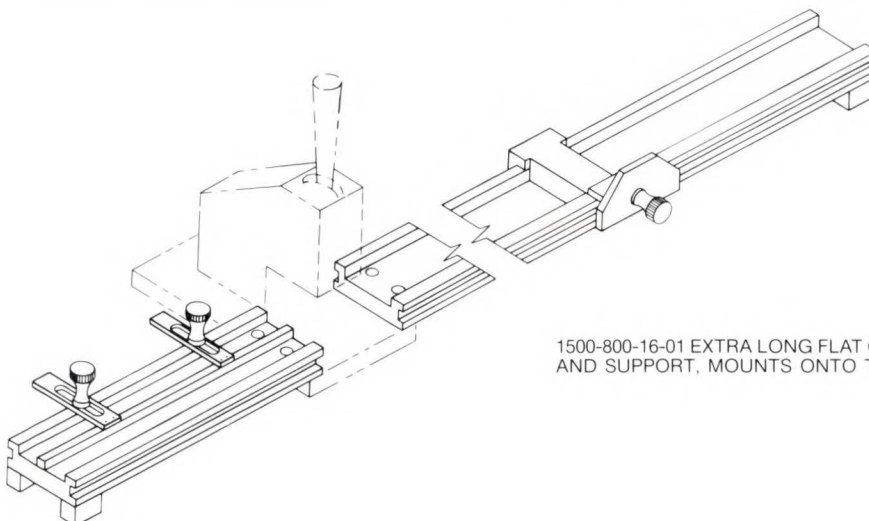
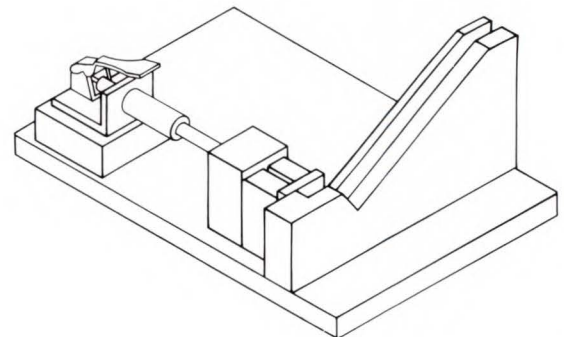
1500-800-15-01 HAND CABLE CUTTER



1500-800-07-01 FLAT CABLE GUIDE, MOUNTS ONTO TERMINATION PRESS



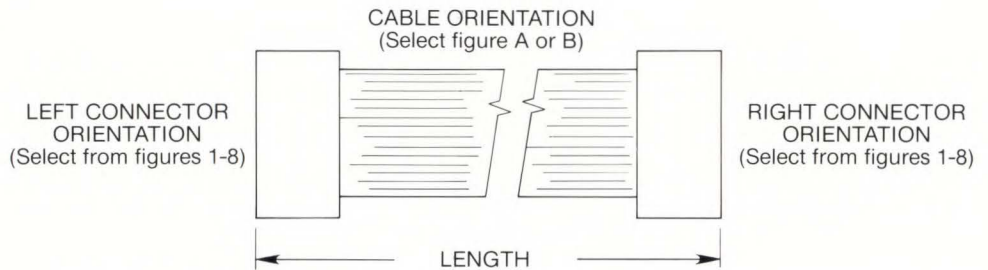
1500-800-11-01 LATCH PIN INSERTION TOOL FOR IG & IH HEADERS, USED TO INSERT LATCH RETAINING PIN



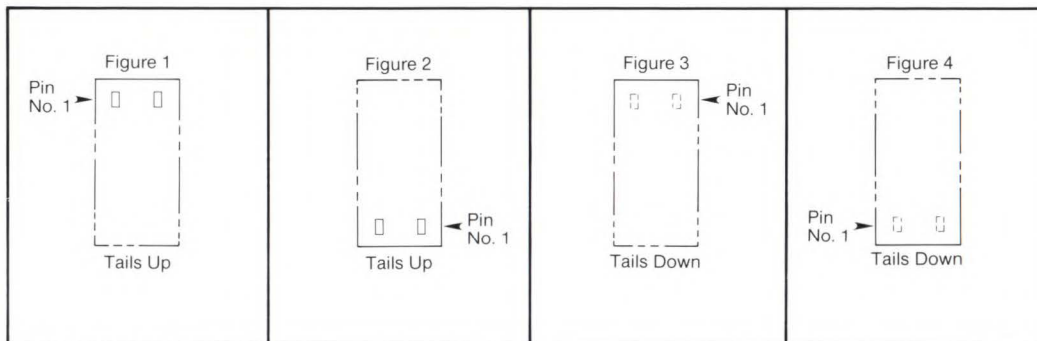
1500-800-16-01 EXTRA LONG FLAT CABLE GUIDE AND SUPPORT, MOUNTS ONTO TERMINATION PRESS

SPECIFYING CONNECTOR/CABLE ASSEMBLIES

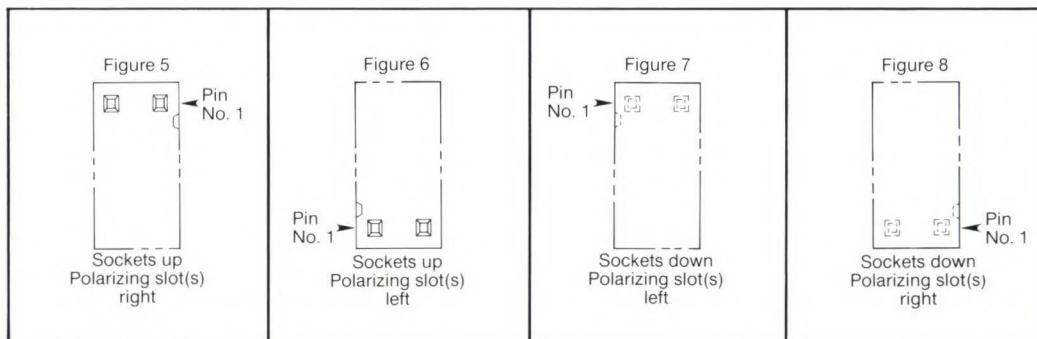
1. Select the desired connector(s) from pages 4 through 21.
2. Unless otherwise specified, standard cable supplied will be 28 gauge 7 strand, gray with red stripe on #1 conductor, UL type 2651.
3. Select the desired orientation figures.
4. Specify the desired length in inches.



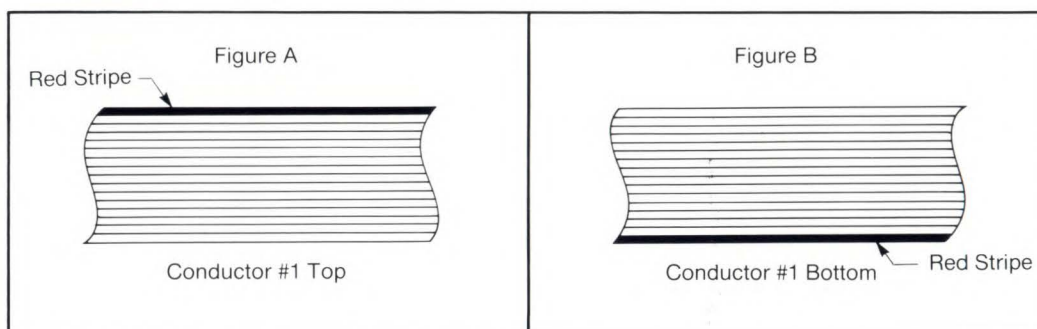
FOR DIP AND TRANSITION CONNECTORS (ID, IP and IK SERIES)



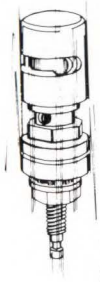
FOR SOCKET CONNECTORS (IS SERIES)



FOR CABLE

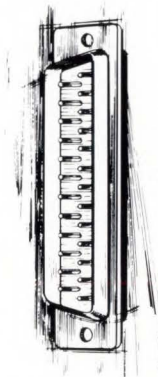
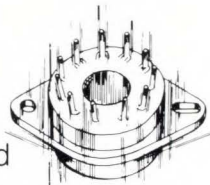


**there are very few
"full-line" connector companies
in the country...**



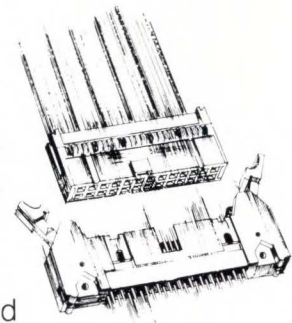
Maybe five or six. If you've been searching for a reliable source to fill your broad-based requirements, it's time you discovered the advantages of connecting with Eby.

Eby has come a long way since it pioneered the binding post way back in the "Twenties." Since then, we've evolved from a specialty house with heavy emphasis on custom engineering into a commodity-type manufacturer offering a full line of connectors.

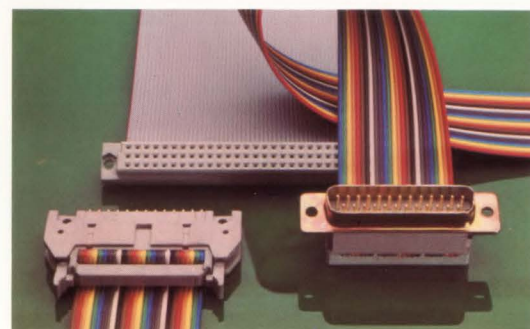
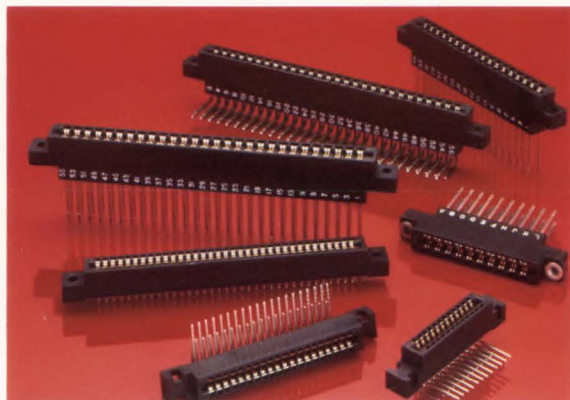
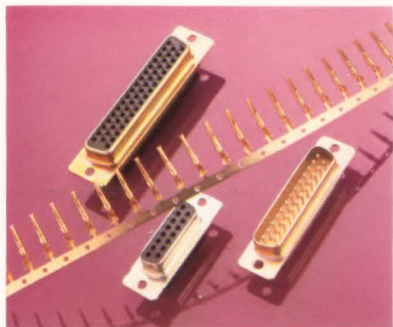


Our "full-line" includes everything from IDC's, D-Subminiatures, Card Edge and Box Connectors to Headers and Transistor Sockets. Our latest additions are the plastic and crimp snap-in D-Subminiature and we're adding new products all the time.

Yes, Eby has changed. We've broadened our line, our distribution and our technology. What hasn't changed is our quality engineering, low rejection rate and personalized customer service. It's a difference you'll like between us and the other "full-line" connector companies.



Eby Products



connect with **eby**TM
subsidiary of REDM Industries

EBY COMPANY, 2751 SOUTHAMPTON ROAD, PHILADELPHIA, PA 19154 • 215-969-4200 • TWX: 710-670-0452

REPRESENTATIVE

For further information

DISTRIBUTOR